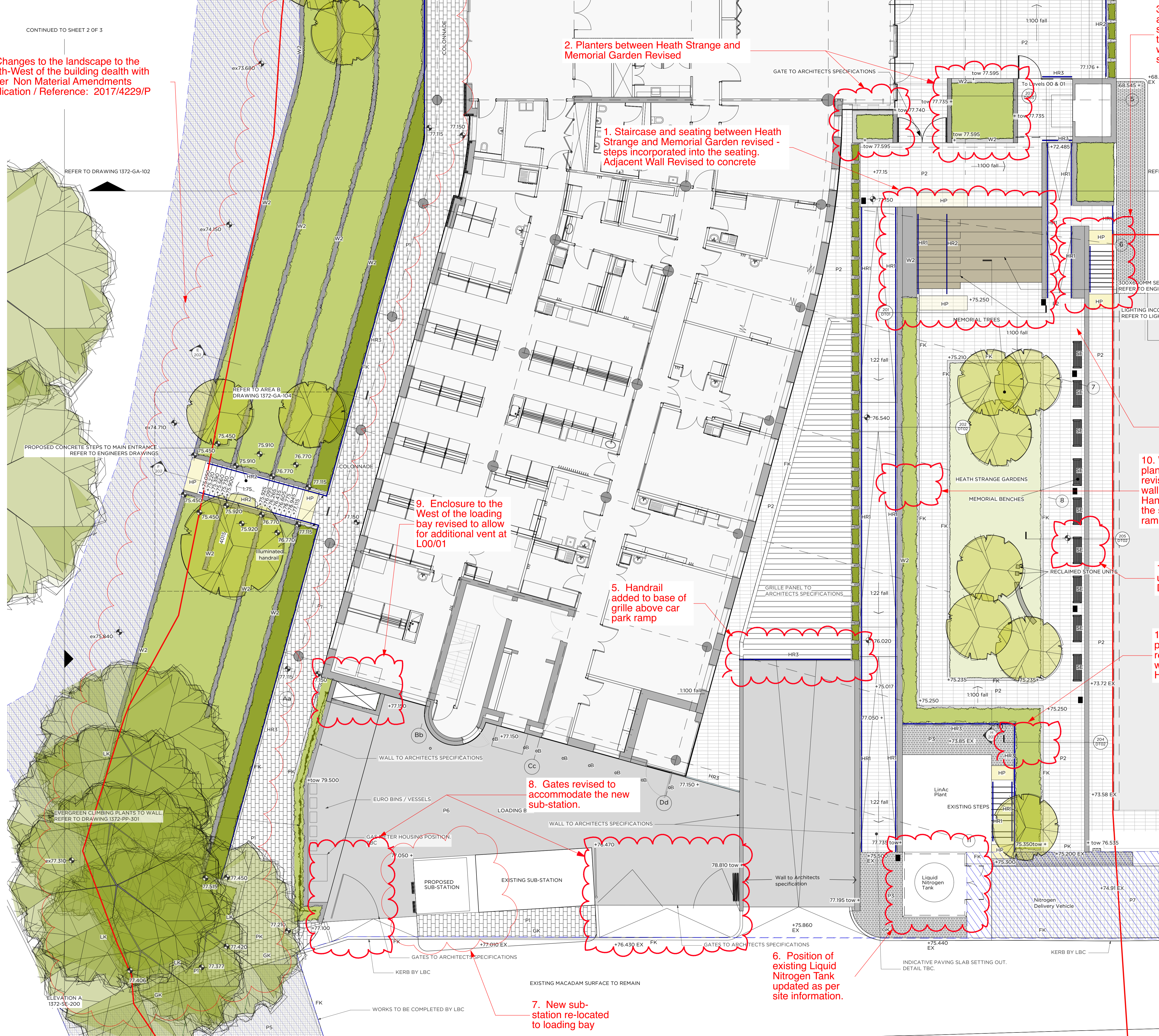


A. Changes to the landscape to the North-West of the building death with under Non Material Amendments application / Reference: 2017/4229/P



2. Planters between Heath Strange and Memorial Garden Revised

1. Staircase and seating between Heath Strange and Memorial Garden revised - steps incorporated into the seating. Adjacent Wall Revised to concrete

3. Planter adjacent to timber seating changed to a concrete wall. Adjacent stair revised

4. One bench omitted

10. Width of planting/path revised. height of wall adjusted. Handrail added to the side of the ramp

13. Height of wall updated. See Detail 2 of 3.

11. Width of planting/path revised. height of wall adjusted. Handrail added.

9. Enclosure to the West of the loading bay revised to allow for additional vent at L00/01

5. Handrail added to base of grille above car park ramp

8. Gates revised to accommodate the new sub-station.

6. Position of existing Liquid Nitrogen Tank updated as per site information.

7. New sub-station re-located to loading bay

- Site Boundary**
- Surfaces**
    - P1 Scoutmoor Yorkstone Paving. Diamond sawn finish 600 W x 400-900 L x 80mm. Refer to Q25/110J
    - P2 600 X 200 Marsalls Celestia Concrete Flags. Refer to Q25/120
    - P3 Concrete Setts 'Tegula'. Traditional color. 240 x 160x 80 mm. Refer to Q25/120 and Q25/317J
    - P4 Concrete Setts 'Tegula'. Traditional color. 240 x 160x 80 mm. Refer to Q25/120 and Q25/316J
    - P5 Granite Setts to Rowland Hill Street 240 x 160 x 100 mm Refer to Q25/115 J
    - P6 In-situ concrete Refer to Engineer's specification
    - P7 Existing surface and kerbs to be retained. Work by LBC
    - HP Hazard Warning Corduroy paving Refer to Q25/320 J
    - GK Granite Kerb. Refer to Q25/120 J
    - FK Flush Kerb. Refer to Q25/121 J
    - PK Pin Kerb Refer to Q25/122 J
    - Hard Timber Decking Refer to Q55/110
  - Planting**
    - Proposed Tree Planting
    - Existing trees to be retained. Trees to be protected according to BS5837 during construction
    - Shrub Planting
    - Lawn
    - Hedge
    - Evergreen climbing plants
  - Furniture**
    - Proposed memorial benches. Refer to Q50/220
    - Hedge Planters 1000x500x500mm
    - Tree Planter 1800x1800x700mm
    - Litter bin. Refer to Q50/240J
    - Handrail type 1- Fixed to the wall. Refer to Architects specification
    - Handrail type 2 with incorporated lighting Refer to Architects specification
    - Handrail type 3 Floor Mounted No lighting Refer to Architects specification
  - General**
    - Bespoke "in-situ" concrete retaining wall 250mm wide to vary heights Refer to Engineers details
    - Brick wall Refer to Engineers details
    - Low kerb 250x150mm kerb laid on side in accordance to Engineers details
    - Stainless Steel Bollards with concrete footings

10	Revised layout following BMJ comments	18.12.17	CP
09	Revised layout following BMJ comments	18.12.17	CP
08	Revised layout. Lighting omitted.	06.10.17	KI
07	Drawing updates	25.07.16	MS
06	Further revisions Comments added	19.07.16	MS
05	Revised following Hickox	05.05.16	CP
04	Revised Layout for Planning	25.04.16	CP
03	Revised Layout	23.03.16	CP
02	Revised Layout	10.03.16	CP
01	Revised Layout	26.02.16	CP

<b>GENERAL ARRANGEMENT 1 OF 3</b>		<b>ROYAL FREE PEARS BUILDING</b>	
PLANNING	1:100 @ A1	30.03.2016	1372-GA-101-10