

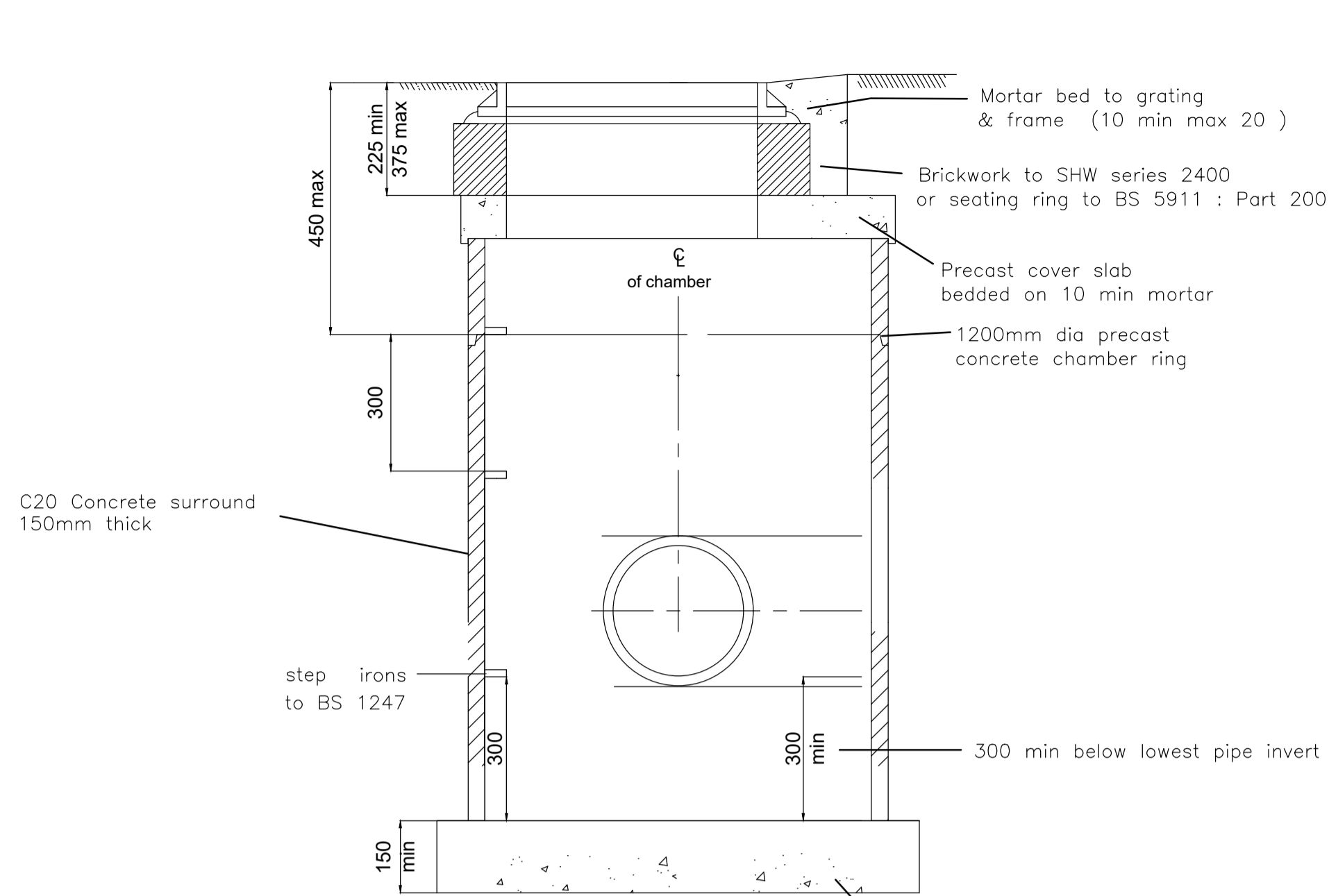
**General Construction Notes**

All highway works (including highway drainage) subject to adoption shall be constructed in accordance with the DEPARTMENT OF TRANSPORT MANUAL OF CONTRACT DOCUMENTS FOR HIGHWAY WORKS 2002, SPECIFICATION FOR HIGHWAY WORKS with additions and amendments where appropriate by City of London.

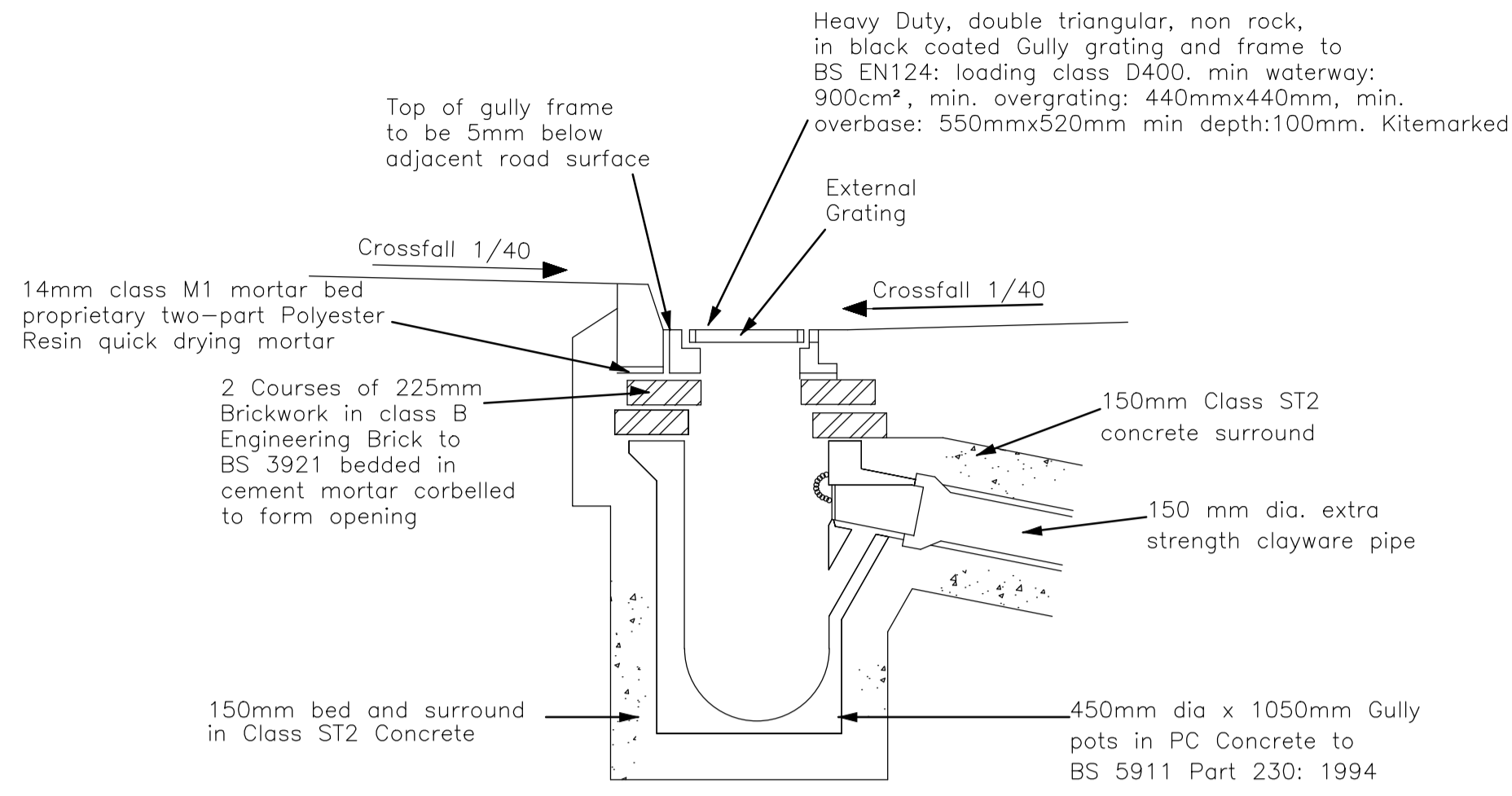
All drainage works subject to adoption shall be constructed in accordance with the WATER AUTHORITIES ASSOCIATION SEWER FOR ADOPTION 7th EDITION A DESIGN AND CONSTRUCTION GUIDE FOR DEVELOPER with any additions and amendments where appropriate by the appropriate water authority.

All materials to be tested in accordance with the specifications for Adoptable highways and any subsequent revision by City of London.

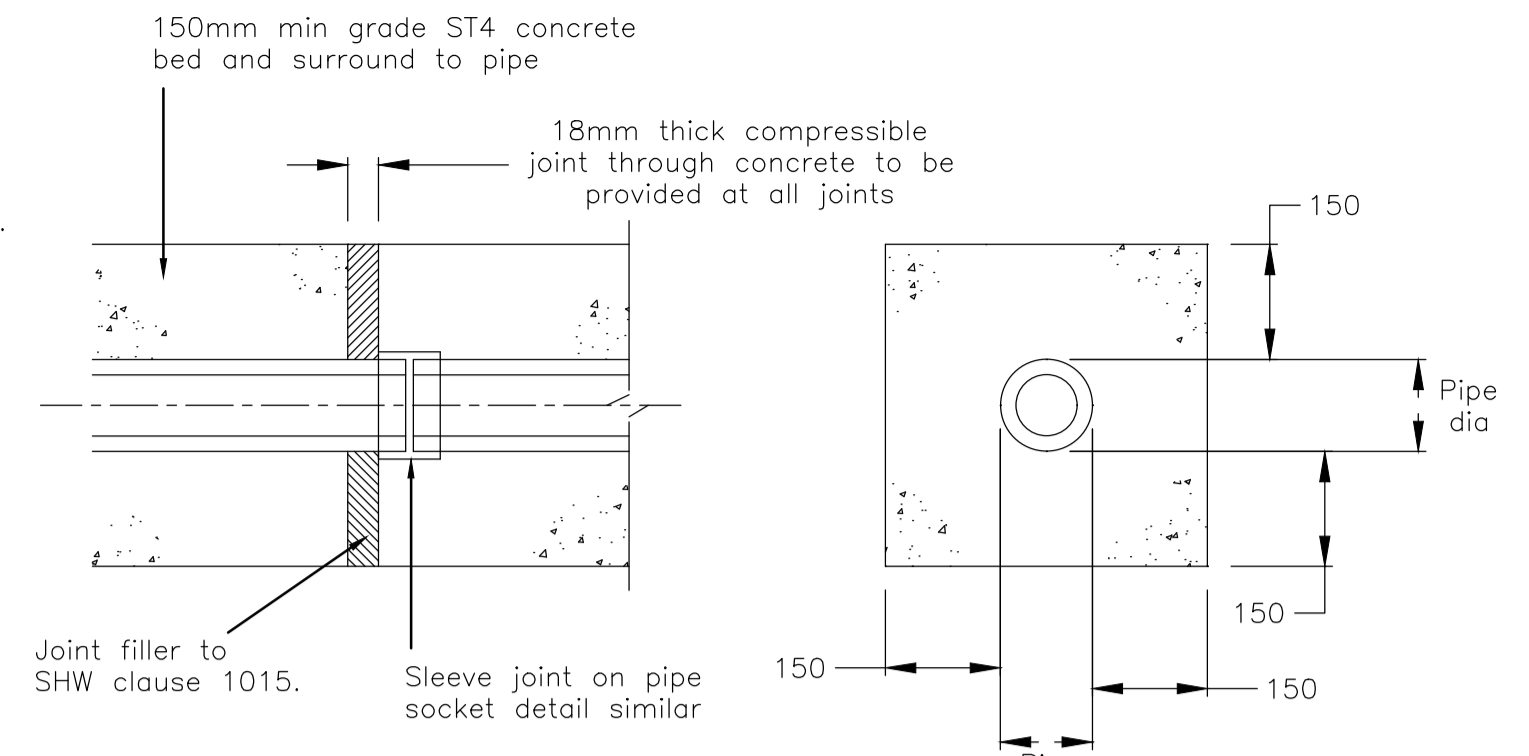
For specific details, please refer to manufacturers details.



**SECTION A-A  
CATCHPIT DETAIL**

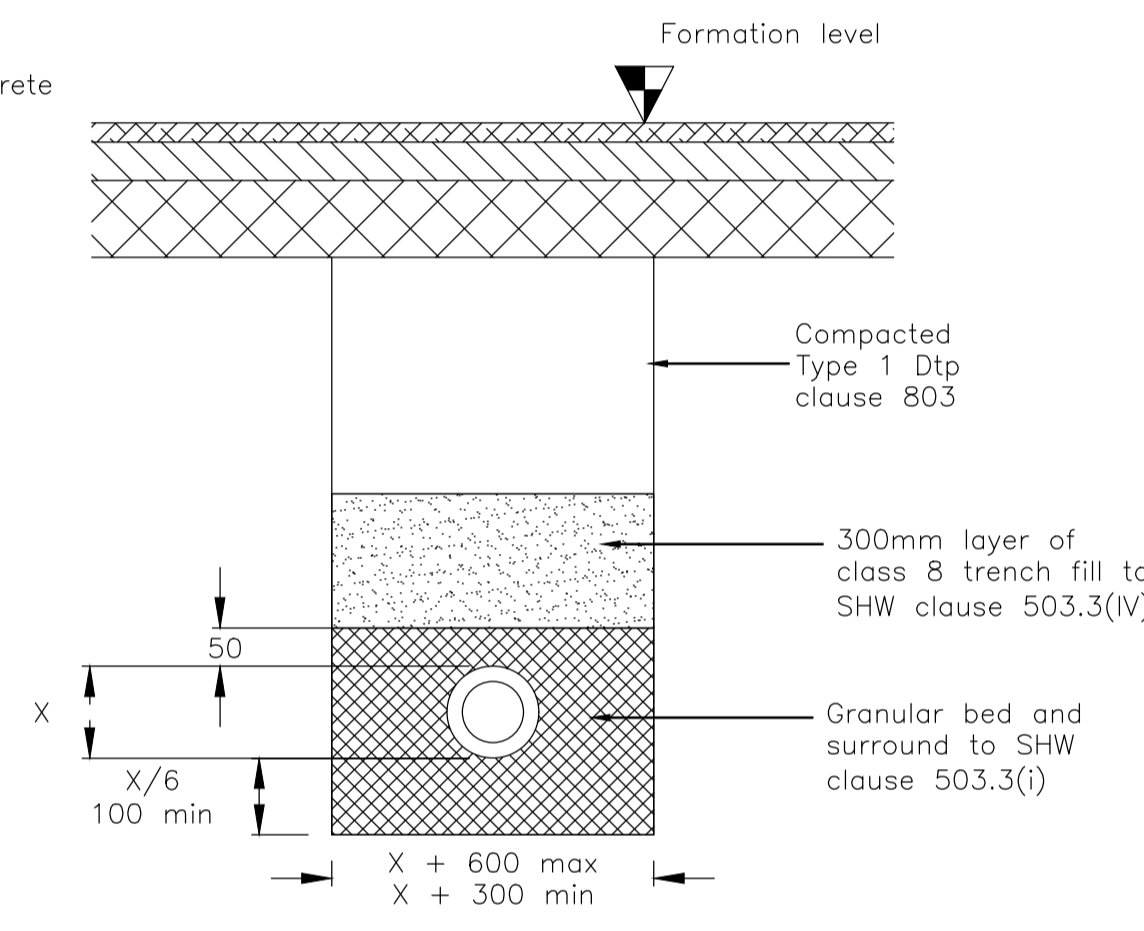


**ROAD GULLY DETAIL**

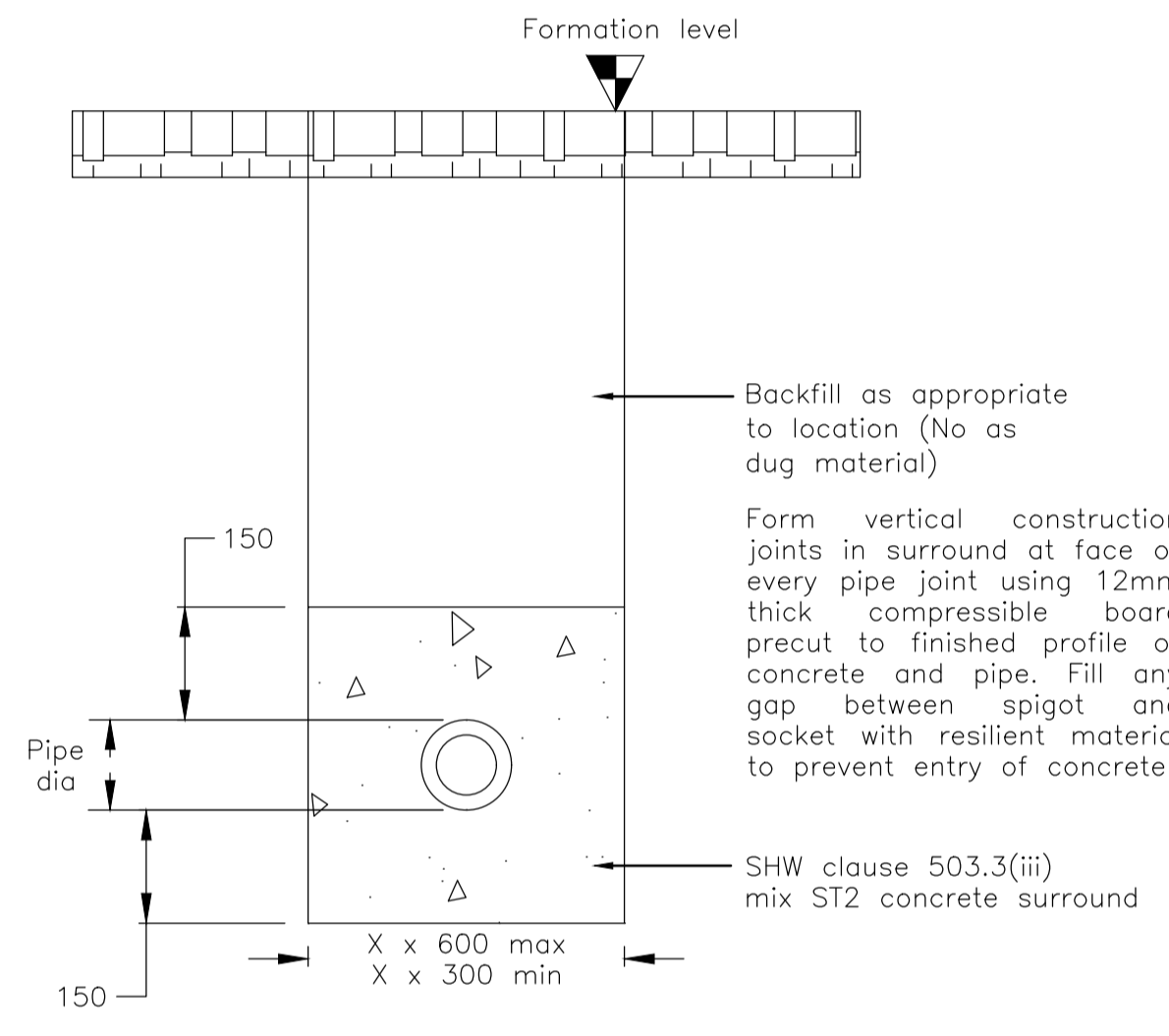


**CONCRETE PROTECTION TO PIPES**

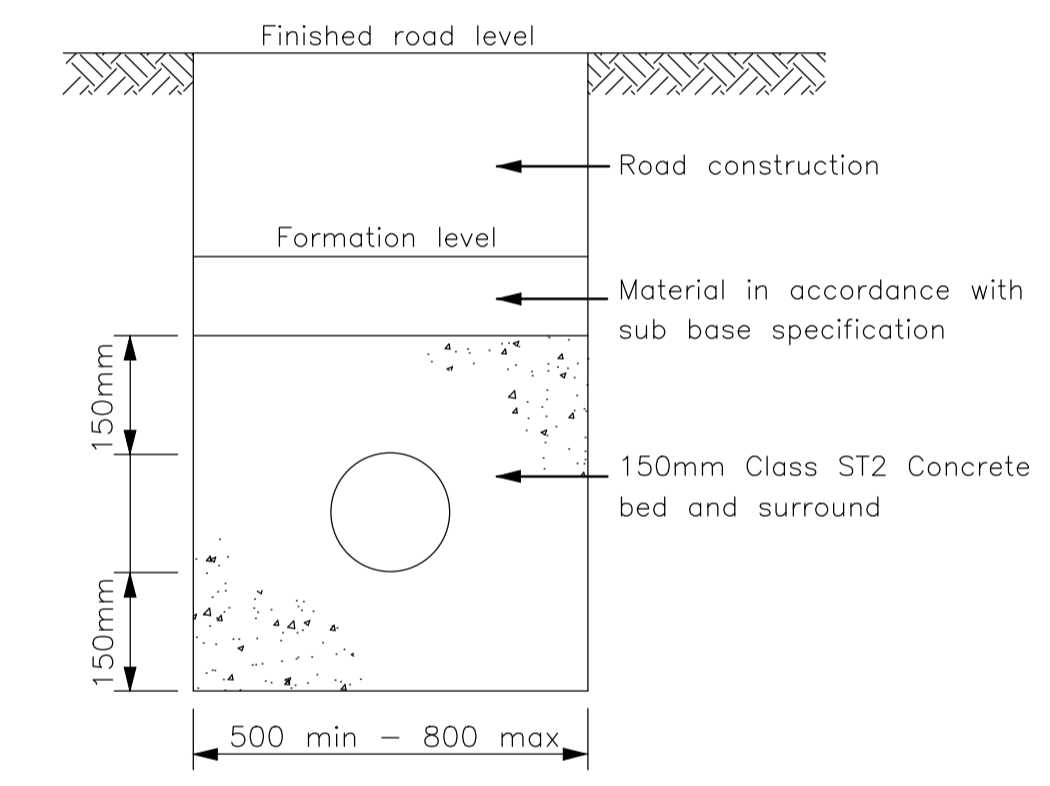
NOTE:  
Compressible fibre board to be pre-cut to pipe diameter and to provide a complete break between concrete surrounds



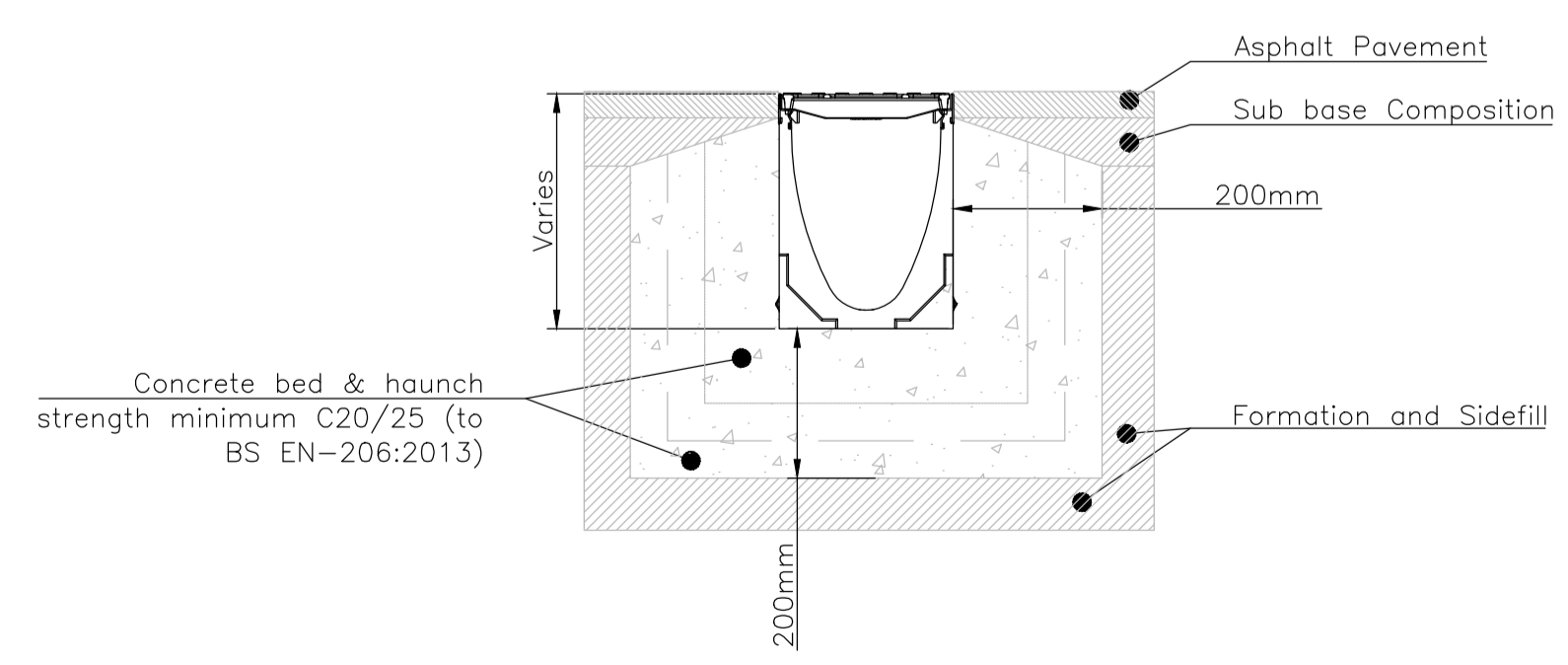
**TYPE S  
PIPE BEDDING IN ROADS  
AND TRAFFICKED AREAS  
(Greater than 1.2m cover in  
highway or trafficked areas)**



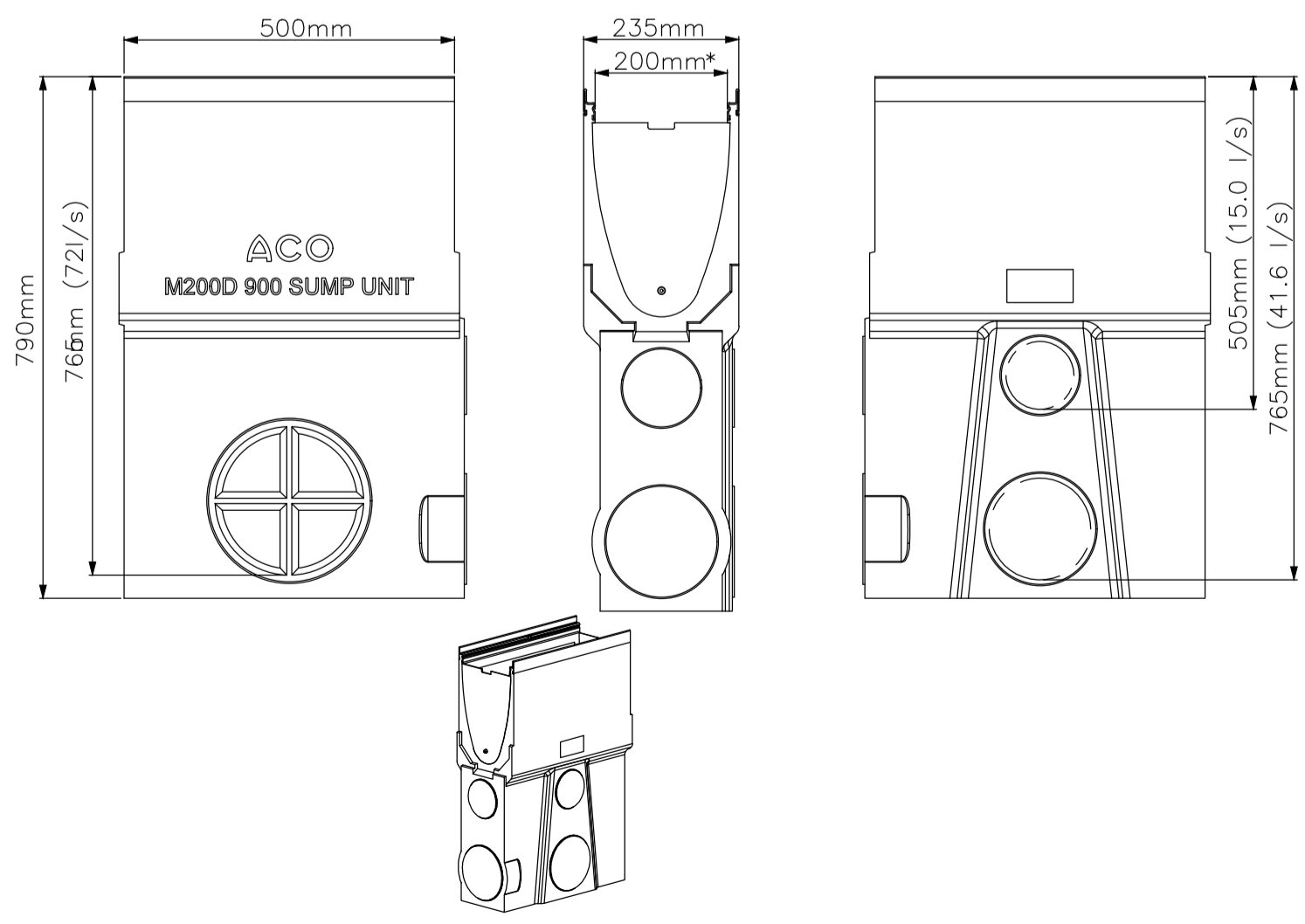
**TYPE Z  
PIPE BEDDING WHEN COVER IS LESS THAN  
(1.2m cover in highways or 0.9m verges)**



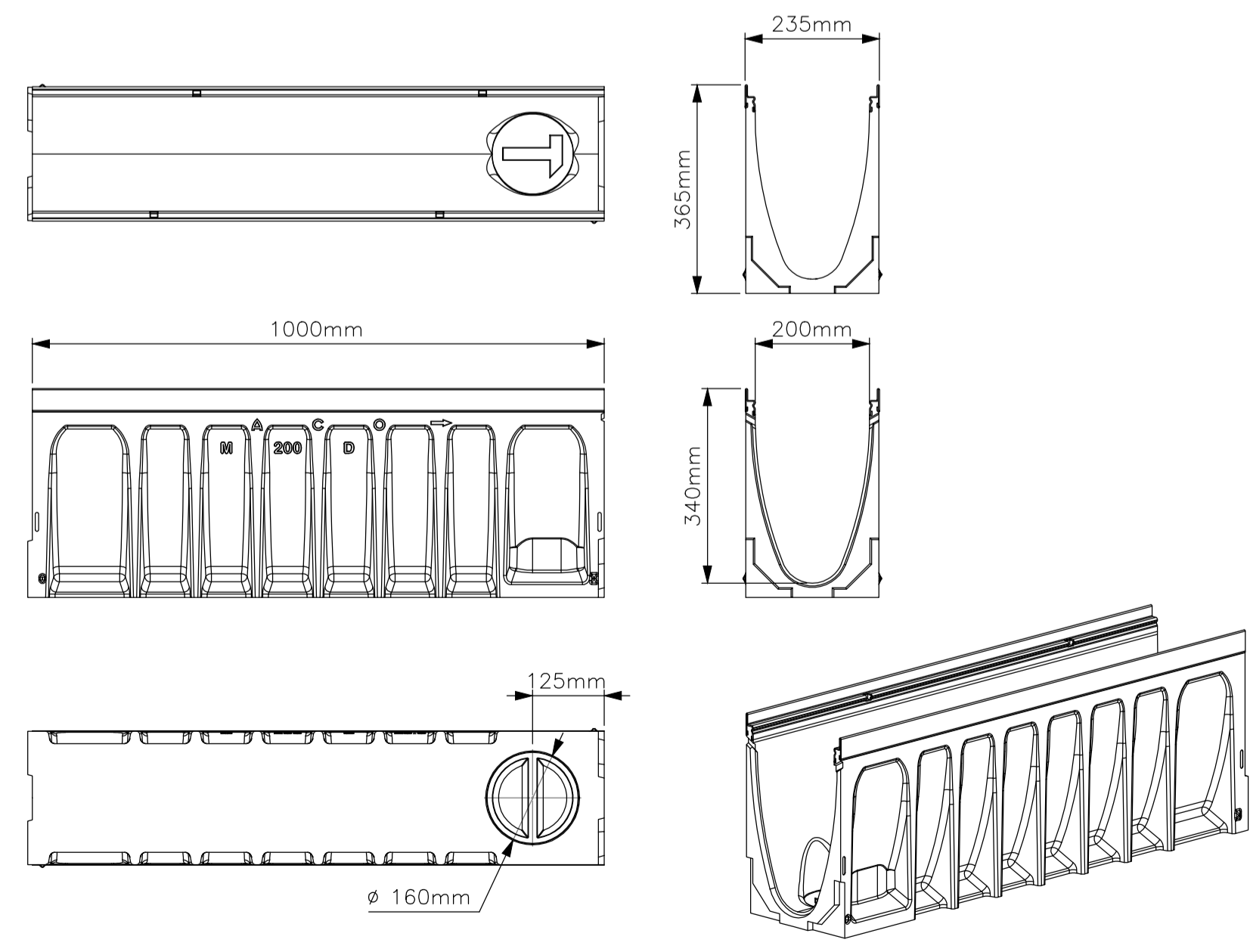
**TYPICAL GULLY CONNECTION**



**TYPICAL ACO MULTIDRAIN M2000**  
REFER TO MANUFACTURERS DETAILS



**TYPICAL ACO MULTIDRAIN  
M2000 SUMP UNIT**  
REFER TO MANUFACTURERS DETAILS



**TYPICAL ACO MULTIDRAIN  
M2000 CHANNEL**  
REFER TO MANUFACTURERS DETAILS

T1	FOR TENDER	JB	DB	11/04/18
A	FIRST ISSUE	MK	JB	16/03/18
Rev	Description	Drawn	Checked	Date



STILWELL LIMITED CONSULTING ENGINEERS  
SATELLIET HOUSE  
2 NEXUS PARK  
ASH VALE  
SURREY GU12 5QE  
Tel: 01276 700400  
Fax: 01252 544934  
E-Mail: contactus@stilwell-ltd.co.uk  
Web: www.stilwell-ltd.co.uk



Project:	EAST HEATH CAR PARK		
Title:	DRAINAGE CONSTRUCTION DETAILS SHEET 1		
Date:	FEB 2018	Drawn:	MK
Scale:	1:200 @ A1	Status:	TENDER
Checked:	JB	Client:	CITY OF LONDON
Drawing No:	TSP/COL/P3266/04	Rev:	T1

**THIS IS A CONTROLLED DOCUMENT  
NOT FOR CONSTRUCTION**

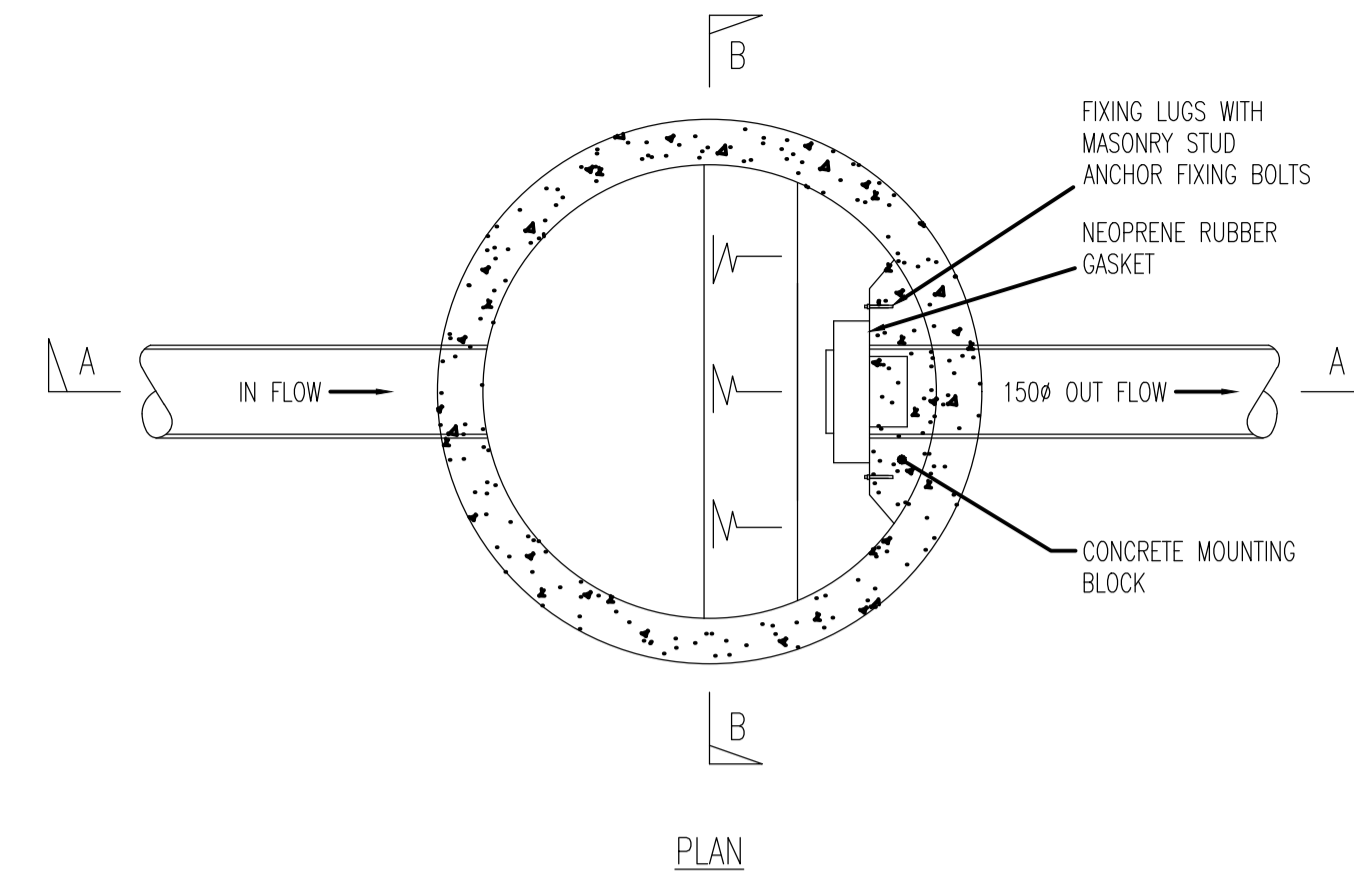
**General Construction Notes**

All highway works (including highway drainage) subject to adoption shall be constructed in accordance with the DEPARTMENT OF TRANSPORT MANUAL OF CONTRACT DOCUMENTS FOR HIGHWAY WORKS 2002, SPECIFICATION FOR HIGHWAY WORKS with additions and amendments where appropriate by City of London.

All drainage works subject to adoption shall be constructed in accordance with the WATER AUTHORITIES ASSOCIATION SEWER FOR ADOPTION 7th EDITION A DESIGN AND CONSTRUCTION GUIDE FOR DEVELOPER with any additions and amendments where appropriate by the appropriate water authority.

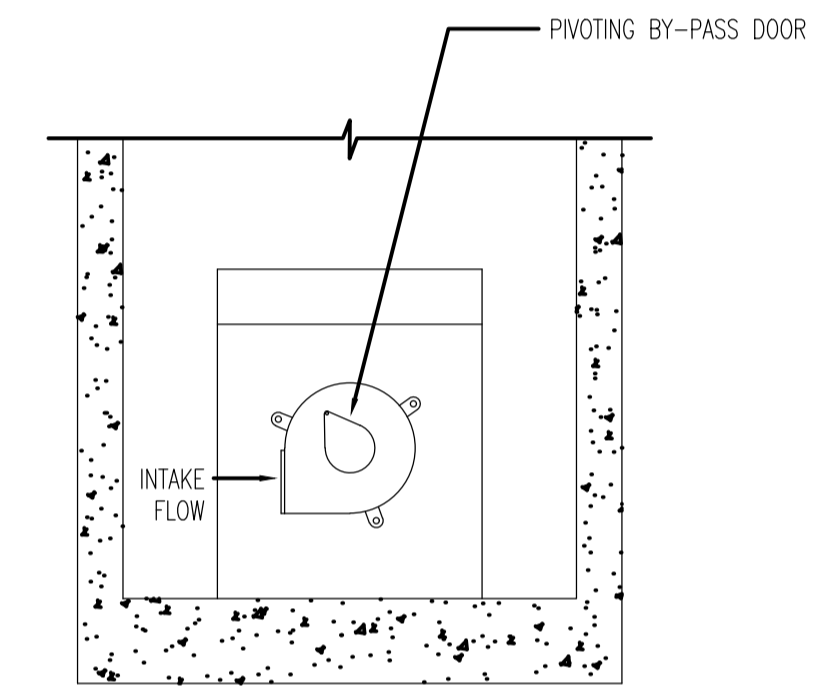
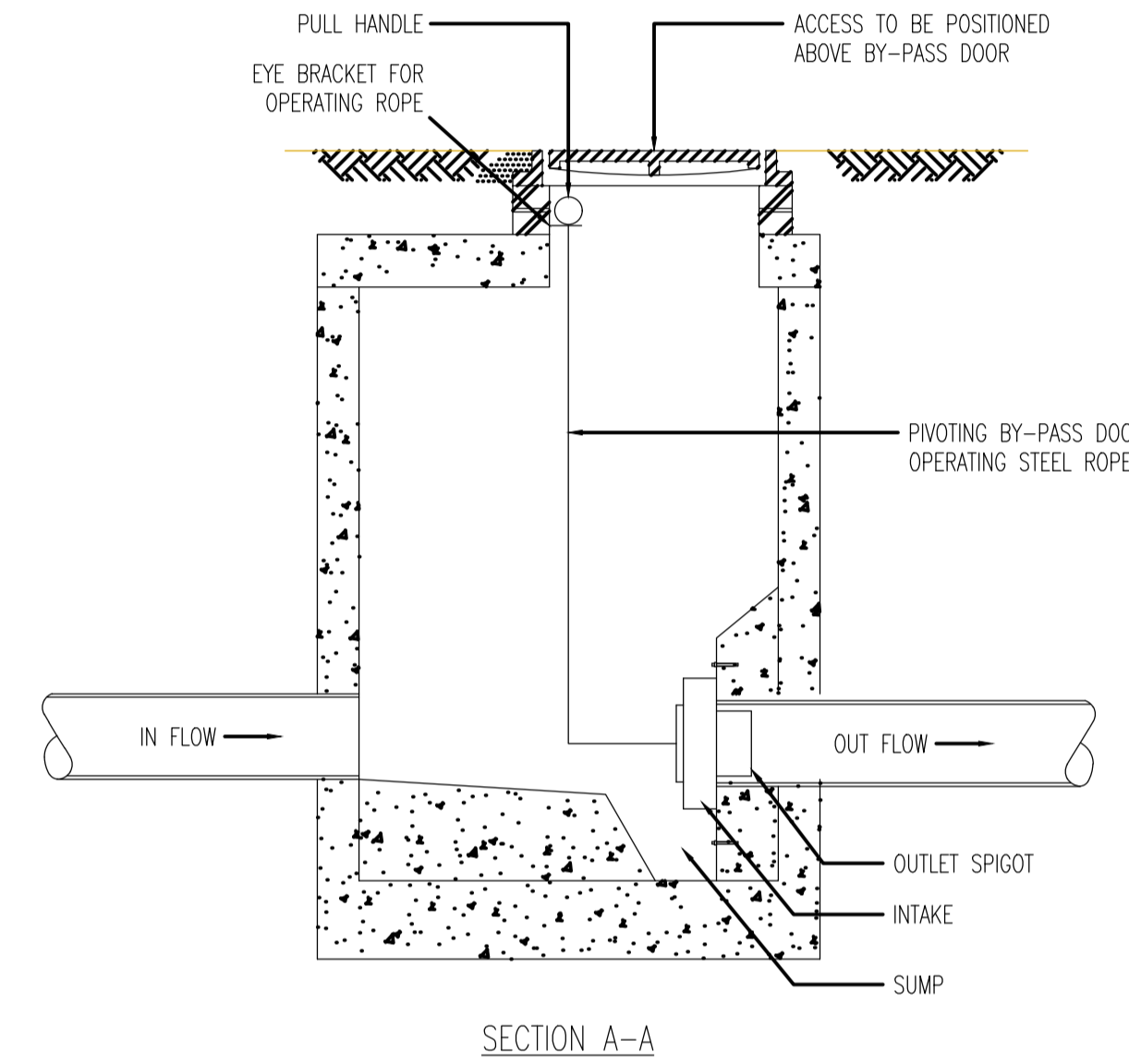
All materials to be tested in accordance with the specifications for Adoptable highways and any subsequent revision by City of London.

For specific details, please refer to manufacturers details for suitability and acceptability.



GENERAL MANHOLE CONSTRUCTION TO BE AS MANHOLE TYPE B ON DRAWING 360

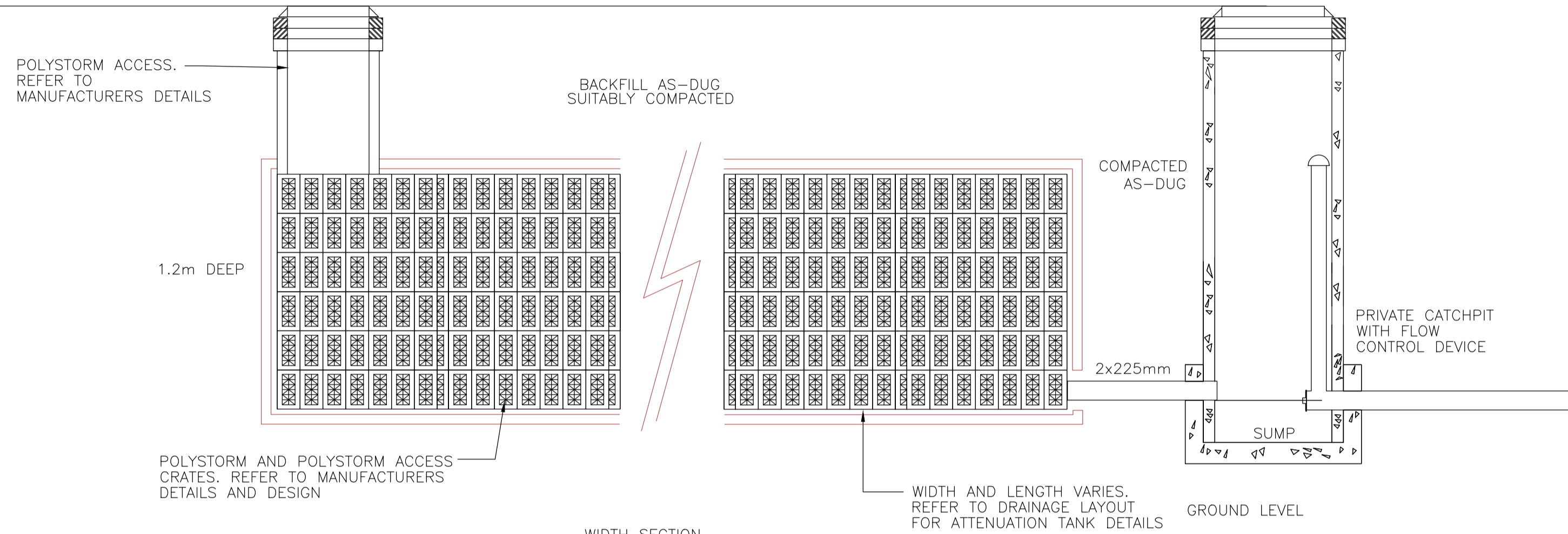
NB: TYPICAL HYDROBRAKE FLOW CONTROL DETAILS SHOWN. DETAILED INFORMATION TO BE PROVIDED BY MANUFACTURER



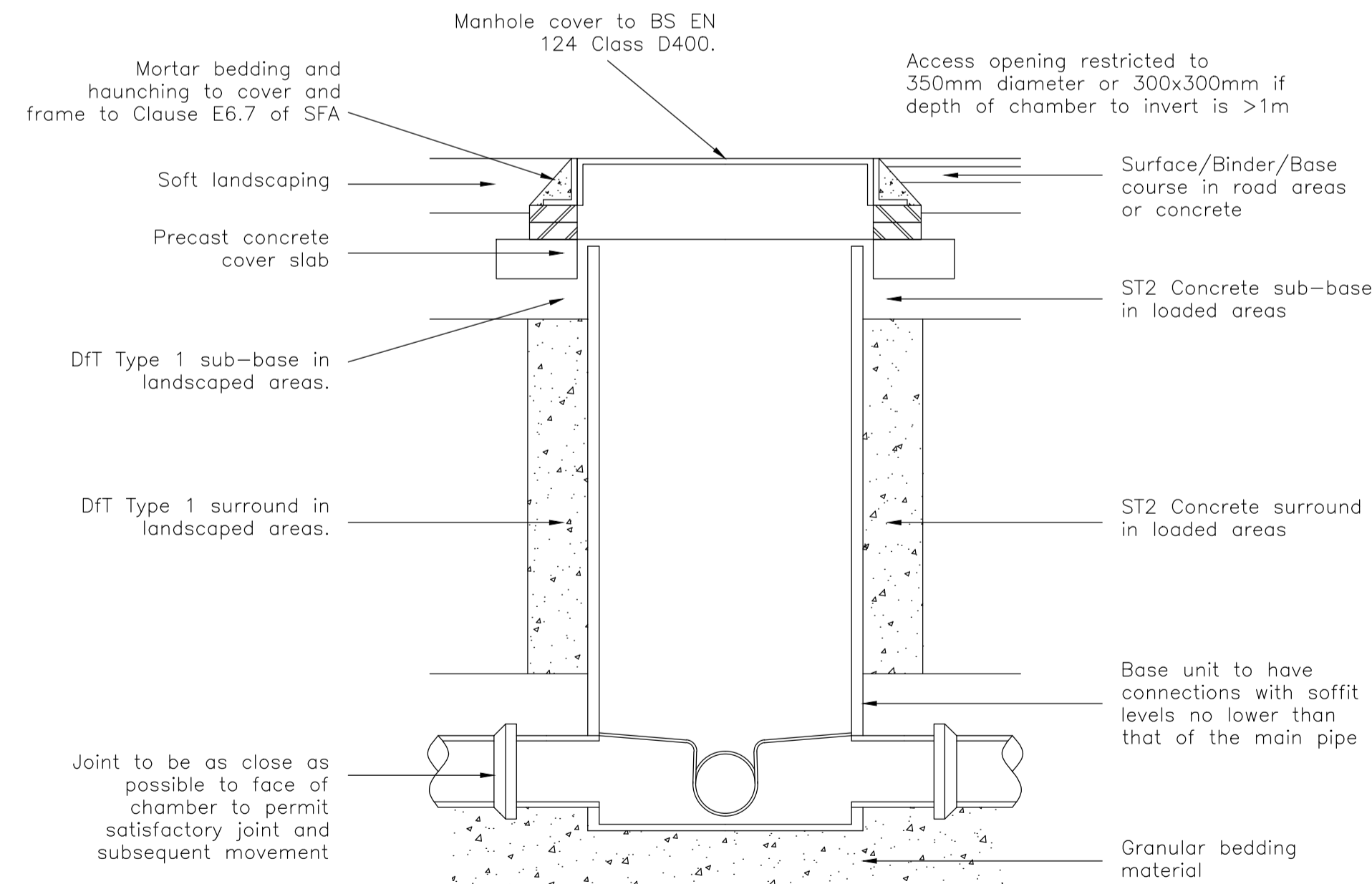
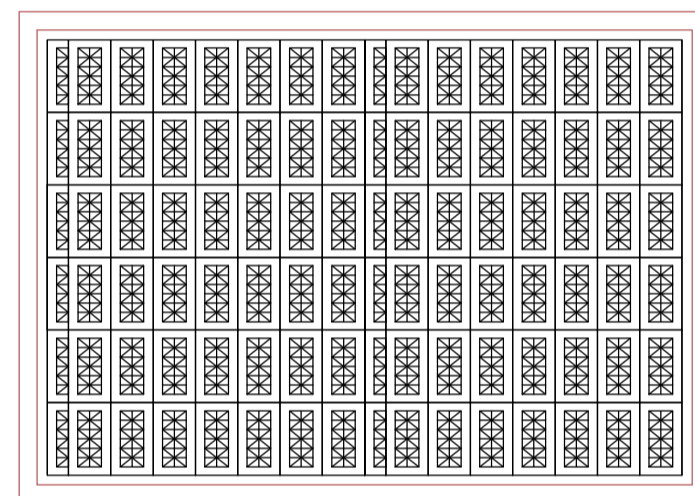
TYPICAL DETAIL OF FLOW CONTROL MANHOLE

SCALE 1:20

**LONG SECTION**



**WIDTH SECTION**



TYPICAL MANHOLE – Type 3  
Max depth from ground level to soffit of pipe <1.2m

T2	STANDARD MANHOLE ADDED	JB	DB	23/05/18
T1	FOR TENDER	JB	DB	11/04/18
A	FIRST ISSUE	MK	JB	16/03/18
Rev	Description	Drawn	Checked	Date

Part of the Parsons Group

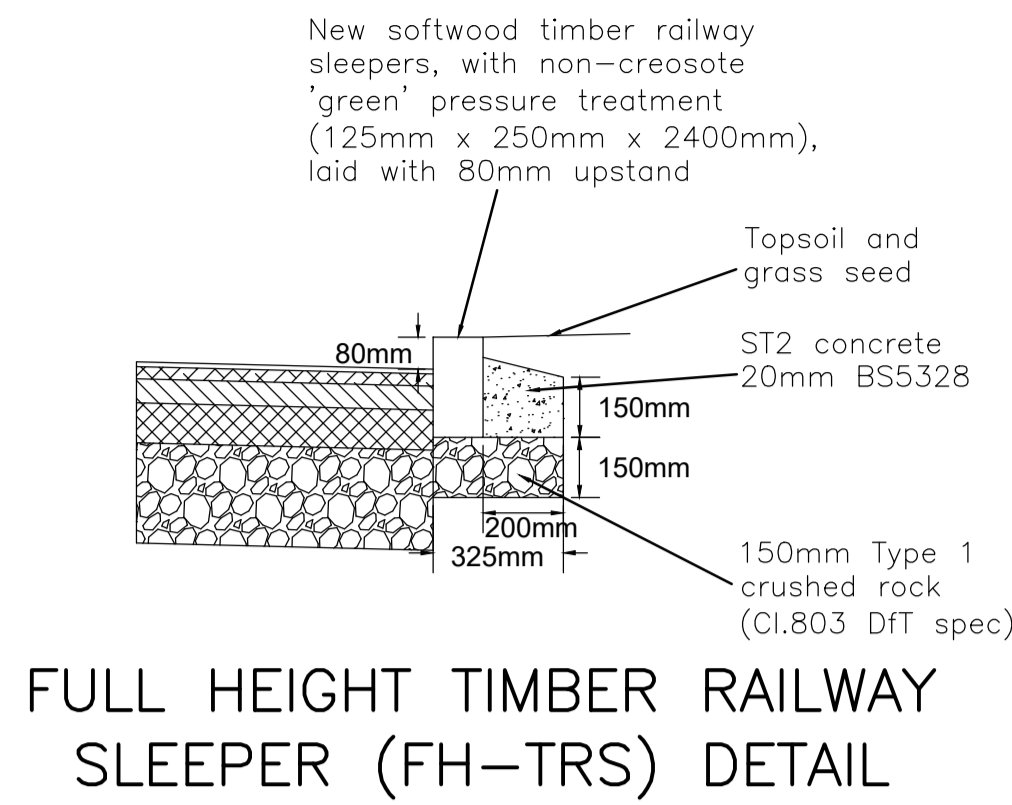
**STILWELL LIMITED CONSULTING ENGINEERS**  
SATELLIET HOUSE  
2 NEXUS PARK  
ASH VALE  
SURREY GU12 5QE

Tel: 01276 700400  
Fax: 01252 544934  
E-Mail: [contactus@stilwell-ltd.co.uk](mailto:contactus@stilwell-ltd.co.uk)  
Web: [www.stilwell-ltd.co.uk](http://www.stilwell-ltd.co.uk)

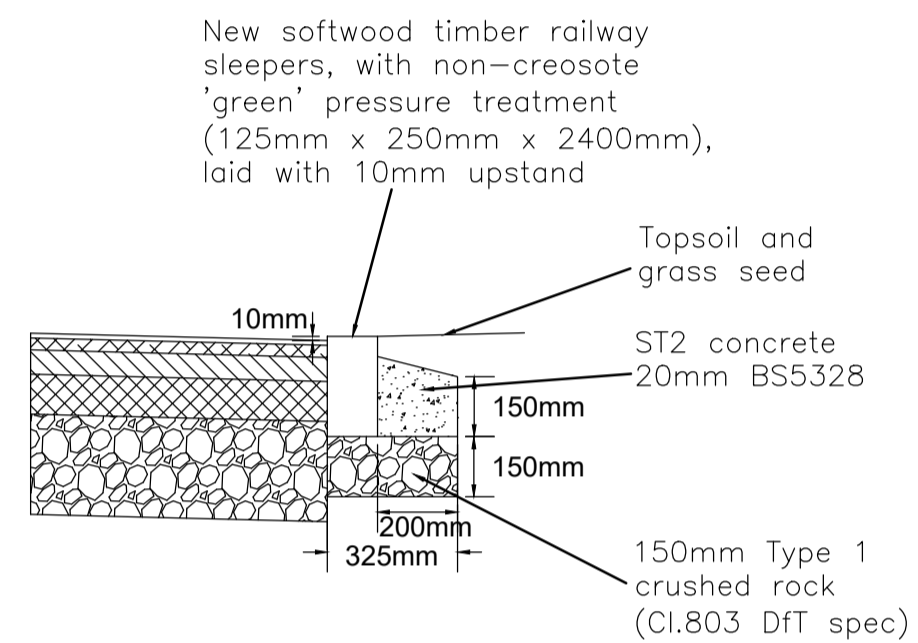
Client:

Project:			
EAST HEATH CAR PARK			
Title:			
DRAINAGE CONSTRUCTION DETAILS SHEET 2			
Date:	FEB 2018	Drawn:	MK
Scale:	1:200 @ A1	Status:	TENDER
Checked:	JB	Client:	CITY OF LONDON
Drawing No:	TSP/COL/P3266/05	Rev:	T2

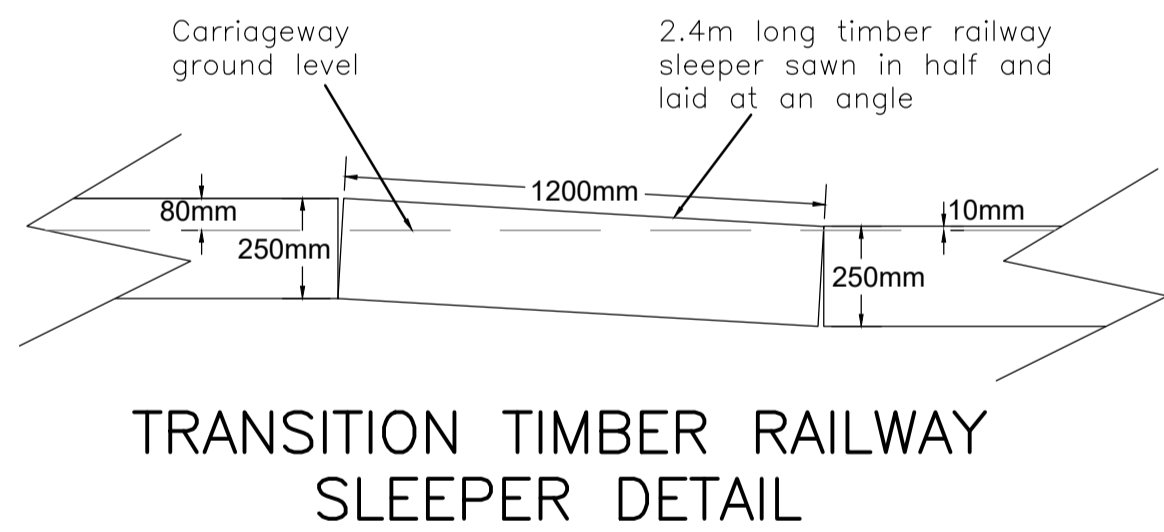
THIS IS A CONTROLLED DOCUMENT  
NOT FOR CONSTRUCTION



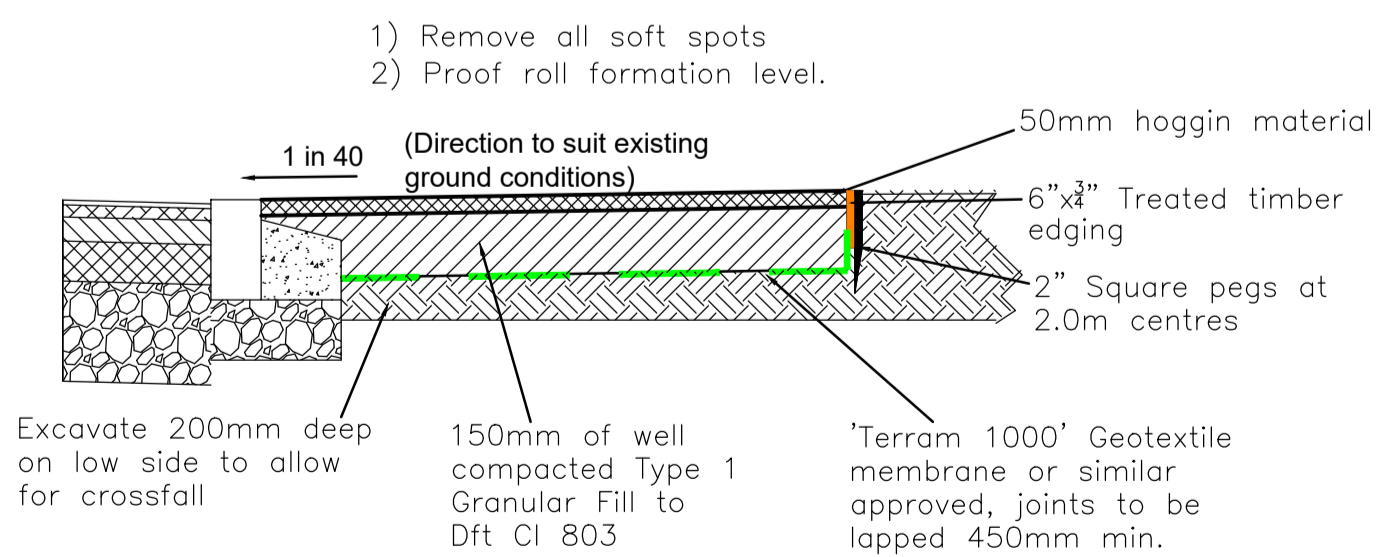
FULL HEIGHT TIMBER RAILWAY SLEEPER (FH-TRS) DETAIL



DROPPED HEIGHT TIMBER RAILWAY SLEEPER (DH-TRS) DETAIL

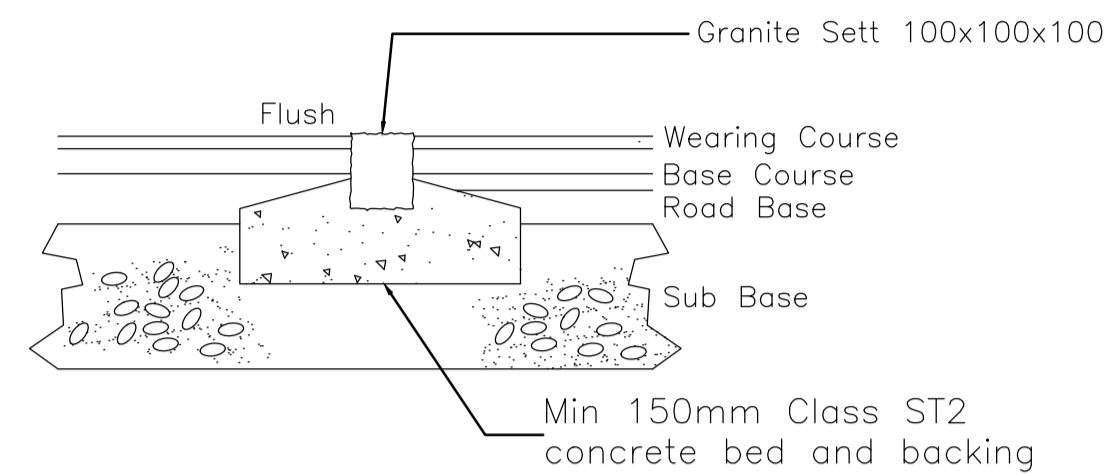


TRANSITION TIMBER RAILWAY SLEEPER DETAIL

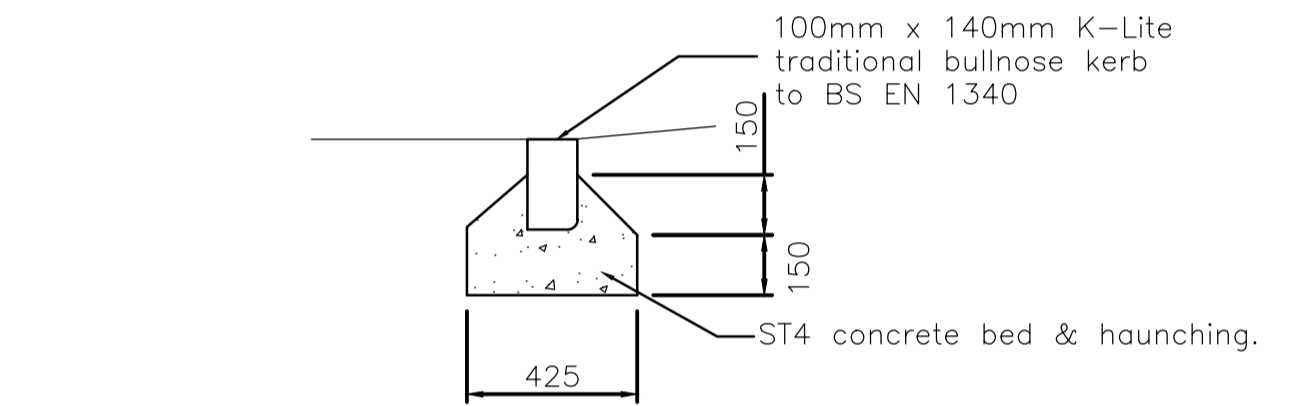


FOOTPATH CONSTRUCTION (AT NORTH-WESTERN PAY STATION) WITH TIMBER EDGING

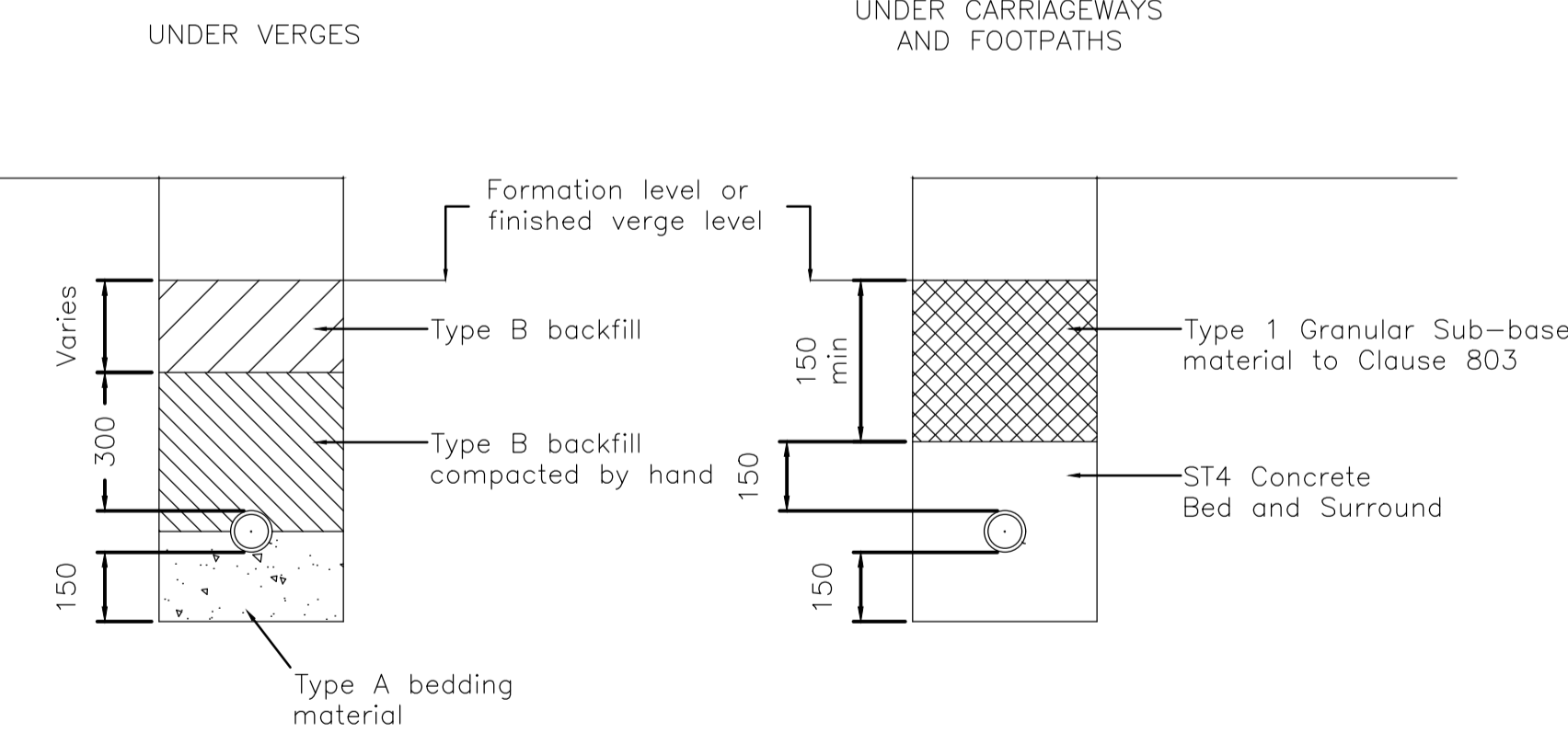
GRANITE SETT  
TYPICAL PLAN VIEW



TYPICAL GRANITE SETT TYPICAL

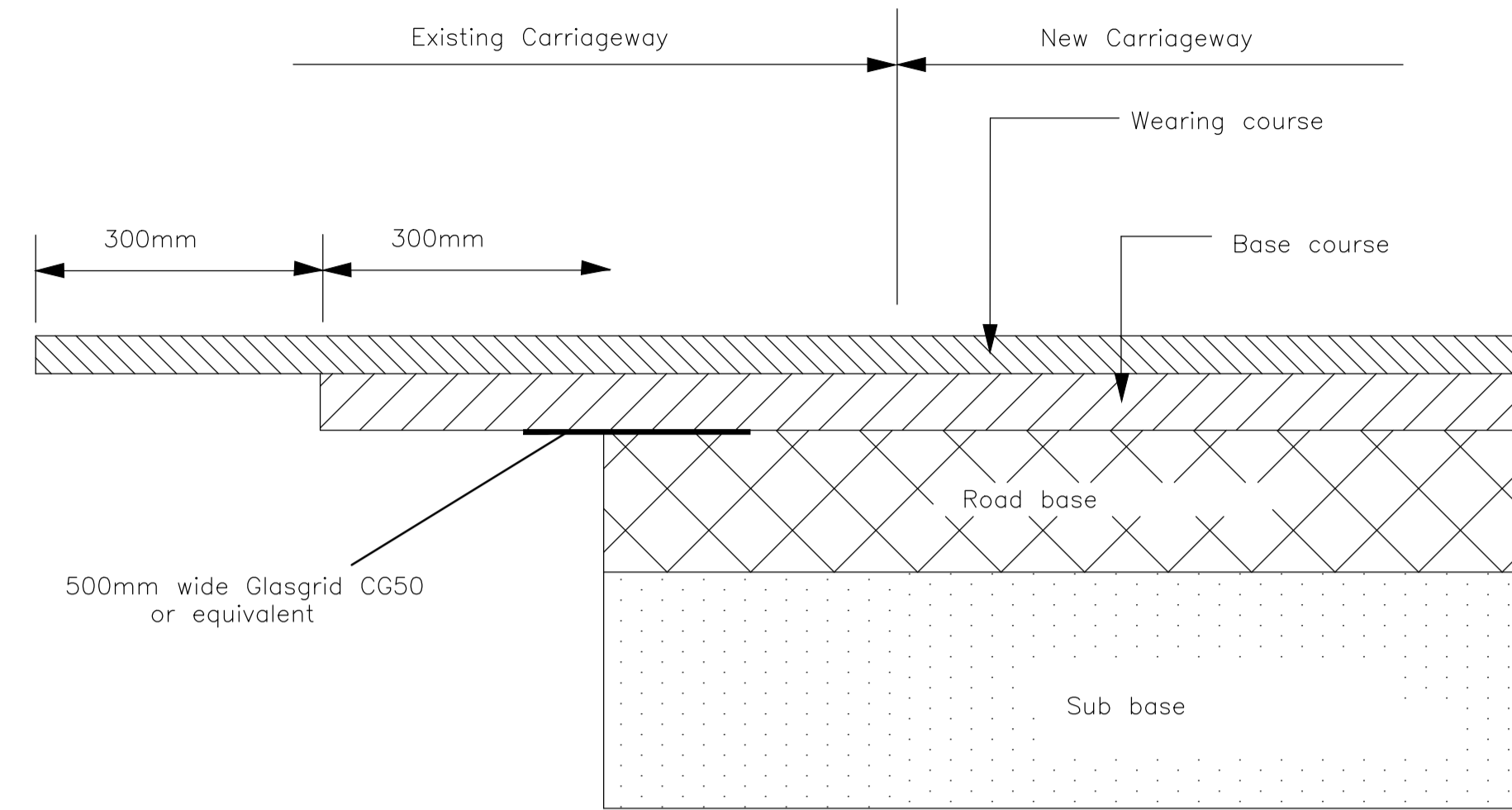


CONSERVATION KERB (K-LITE TRADITIONAL, OR SIMILAR) DETAIL

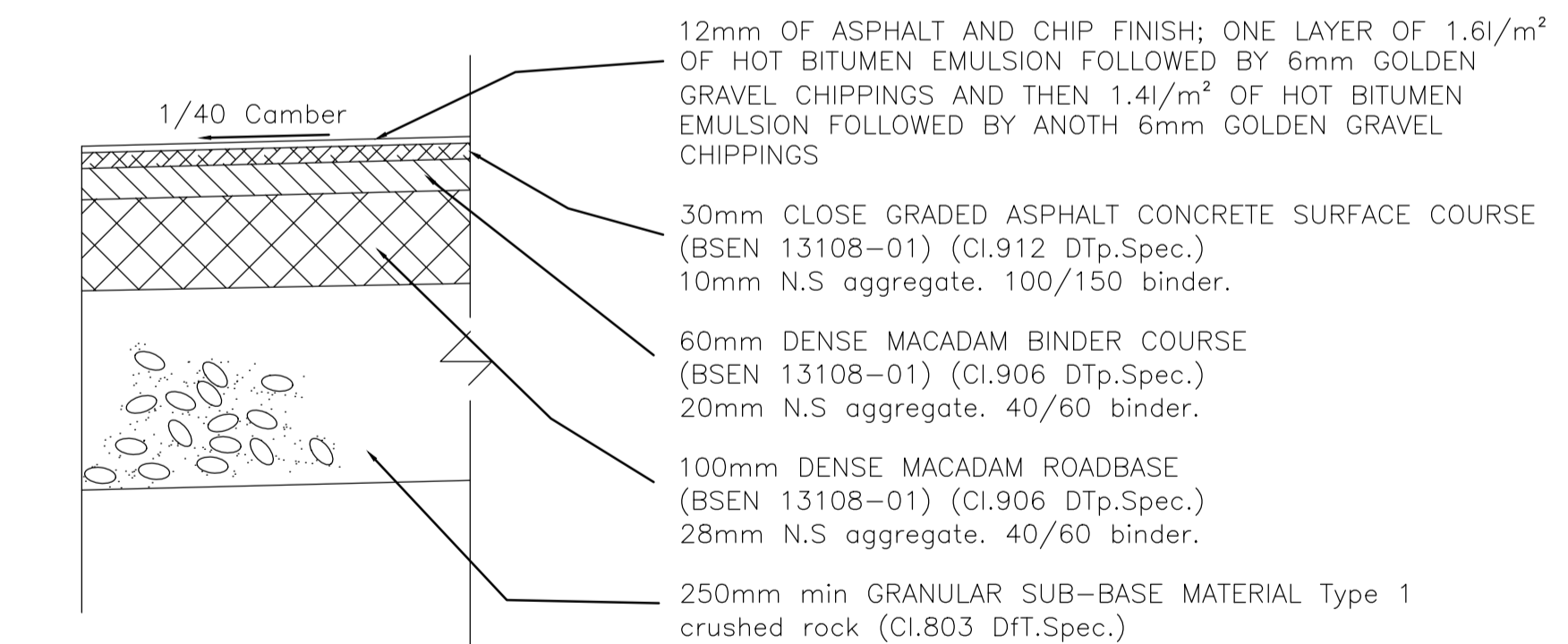


NOTE  
Type A bedding and Type B backfill to be to 'Sewers For Adoption' Clause 4.3.4  
Ducts to be to Clause 501

SERVICE DUCT DETAILS



SECTION THROUGH TIE-IN



ASPHALT AND CHIP FINISH CONSTRUCTION

**CAPPING LAYER**

The thickness of sub base and capping shall be determined from in-situ CBR testing and agreement with the Highway Authority representative. The minimum thickness of type 1 sub base shall be 235mm.

Capping material shall be class 6F5 material, being sourced, placed and compacted in accordance with the provisions of the Highways Agency Specification table 6/1.

For CBR results of >5% - sub base thickness to be 150mm with a capping layer of 125mm.

For CBR results of 2% to 5% a capping layer as shown below shall be provided:  
<2% - 600mm capping  
2-5% - 350mm capping

For CBR results below 2% a capping layer of 600mm and a sub base of 150mm shall be used.

**General Construction Notes**

All highway works (including highway drainage) subject to adoption shall be constructed in accordance with the DEPARTMENT OF TRANSPORT MANUAL OF CONTRACT DOCUMENTS FOR HIGHWAY WORKS 2002, SPECIFICATION FOR HIGHWAY WORKS with additions and amendments where appropriate by City of London.

All drainage works subject to adoption shall be constructed in accordance with the WATER AUTHORITIES ASSOCIATION SEWER FOR ADOPTION 7th EDITION A DESIGN AND CONSTRUCTION GUIDE FOR DEVELOPER with any additions and amendments where appropriate by the appropriate water authority.

All materials to be tested in accordance with the specifications for Adoptable highways and any subsequent revision by City of London.

T4	CONSERVATION KERB REINSTATED	JB	DB	24/05/18
T3	TIMBER RAILWAY SLEEP KERBS ADDED	JB	DB	21/05/18
T2	KERB TYPE UPDATED	JB	DB	11/05/18
T1	FOR TENDER	JB	DB	11/04/18
A	FIRST ISSUE	MK	JB	16/03/18
Rev	Description	Drawn	Checked	Date

Part of the Parsons Group

**Stilwell**  
PARTNERSHIP

STILWELL LIMITED CONSULTING ENGINEERS  
SATELLIET HOUSE  
2 NEXUS PARK  
ASH VALE  
SURREY GU12 5QE

Tel: 01276 700400  
Fax: 01252 544934  
E-Mail: contactus@stilwell-ltd.co.uk  
Web: www.stilwell-ltd.co.uk



Project:	EAST HEATH CAR PARK		
Title:	ROAD CONSTRUCTION DETAILS		
Date:	FEB 2018	Drawn:	MK
Scale:	1:200 @ A1	Status:	TENDER
Checked:	JB	Rev:	T4
Drawing No:	TSP/COL/P3266/06		

THIS IS A CONTROLLED DOCUMENT  
NOT FOR CONSTRUCTION