

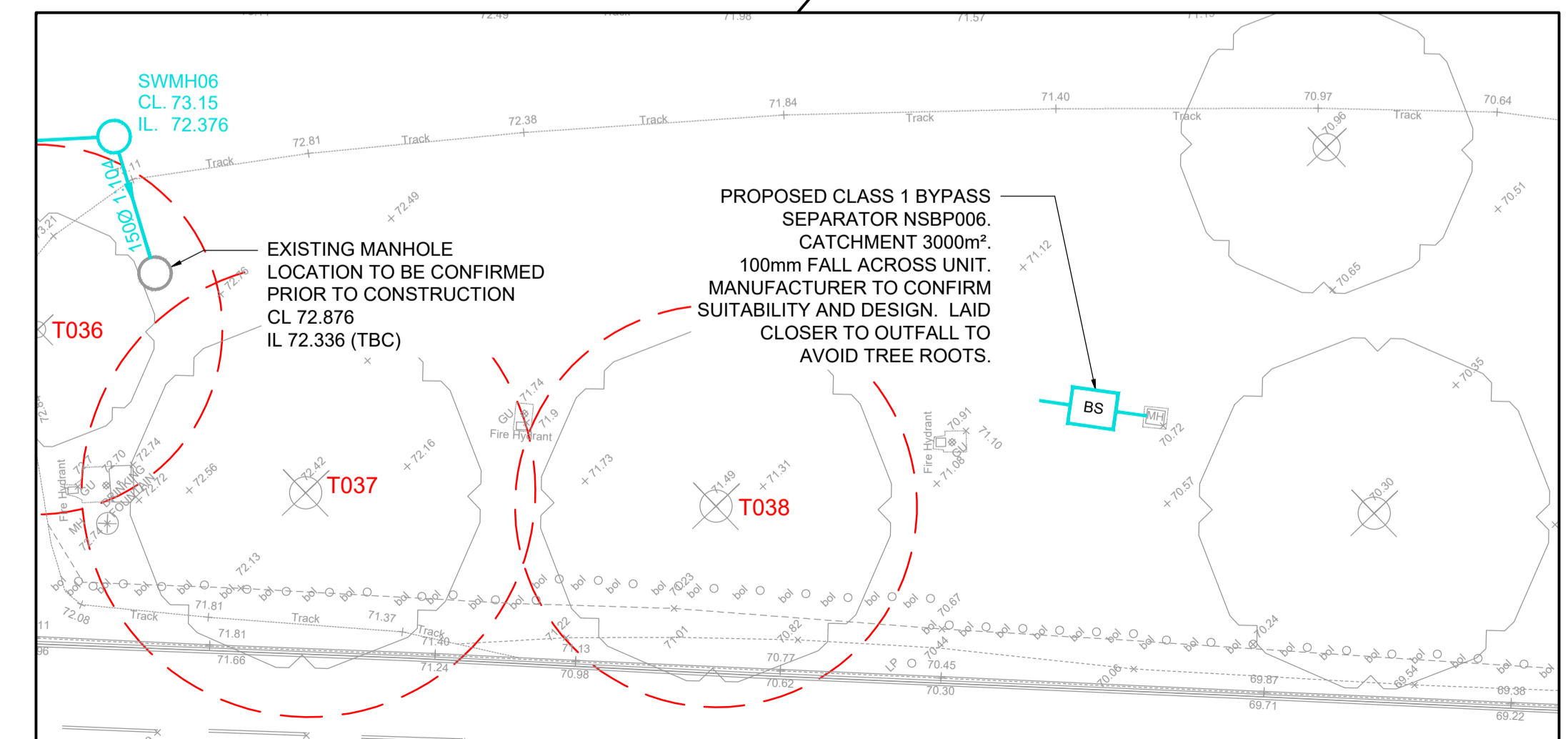
EXCAVATION FOR KERB TO BE CARRIED OUT UNDER THE SUPERVISION OF THE CITY OF LONDON TREE OFFICER. POSSIBLE INSTALLATION OF STEEL EDGING IF SIGNIFICANT ROOTS ARE FOUND

EXCAVATION FOR KERB AND ACO CHANNEL TO BE CARRIED OUT UNDER THE SUPERVISION OF THE CITY OF LONDON TREE OFFICER

SURFACE WATER FLOW CONTROL (HYDROBRAKE) MANHOLE RESTRICTING DISCHARGE TO 2l/s

EXISTING MANHOLE TO BE BROKEN OUT AND REPLACED WITH A NEW CHAMBER. ALLOWANCE TO BE MADE FOR EXISTING CONNECTIONS TO REMAIN AND SUFFICIENT SPACE FOR PROPOSED CONNECTIONS.

EXISTING MANHOLE LOCATION TO BE CONFIRMED PRIOR TO CONSTRUCTION CL 72.876 IL 72.336 (TBC)



Drainage Construction Notes

All materials and workmanship related to private sewers shall be in accordance with Part H of the Building Regulation and BS EN752

All materials and workmanship related to adoptable sewers shall be in accordance with the Sewers For Adoption 7th Edition as published by the Water Services Association and any subsequent revisions shown by the relevant authorities.

Gully grating and ACO channel shall be ductile iron to BS EN124, Class D400, and kitemarked.

Manhole covers and frames to be ductile iron to BS EN124 Class D400 in carriageways and Class B125 in verges unless otherwise specified. Covers to be kitemarked and badged "SW". Brick/brick infilled manhole covers are not to be used on adoptable manholes.

Pipework to be of Clay material. All clayware pipes to be vitrified clay to BS EN 295 or BS 65 and of minimum strength Class 120 or Extra Strength respectively.

All carrier drains under carriageway to be constructed with BEDDING TYPES S or Z depending on depth of cover as described on Typical Drainage Details drawing.

All pipe connections to be made soffit to soffit unless otherwise noted.

All pipework with less than 1.2m cover within roads or parking areas to have concrete bed & surround.

If the contractor finds any discrepancies in the information provided then he must notify the engineer immediately before any materials are ordered or works undertaken

All dimensions in millimetres unless otherwise stated.

ACO channels to be to ACO design. Refer to ACO for requirements.

Storage tank to be constructed in accordance with manufacturers guidance to ensure design is adequate and suitable.

Class 1 Bypass separator, storage tank, ACO channels, gullies and other drainage elements are subject to a regular maintenance regime as set out by the manufacturer to minimize silt and other potential issues.

Confirmation of existing manhole position and level required prior to construction.

T2	AMENDMENTS FOLLOWING ARBORICULTURAL ASSESSMENT	JB	DB	21/05/18
T1	DRAINAGE AMENDMENTS	JB	DB	10/04/18
A	FIRST ISSUE	JB	DB	15/5/18
Rev	Description	Drawn	Checked	Date



STILWELL LIMITED CONSULTING ENGINEERS
 SATELLIET HOUSE
 2 NEXUS PARK
 ASH VALE
 SURREY
 GU12 5QE

Tel: 01276 700400
 Fax: 01252 544934
 E-Mail: contactus@stilwell-ltd.co.uk
 Web: www.stilwell-ltd.co.uk

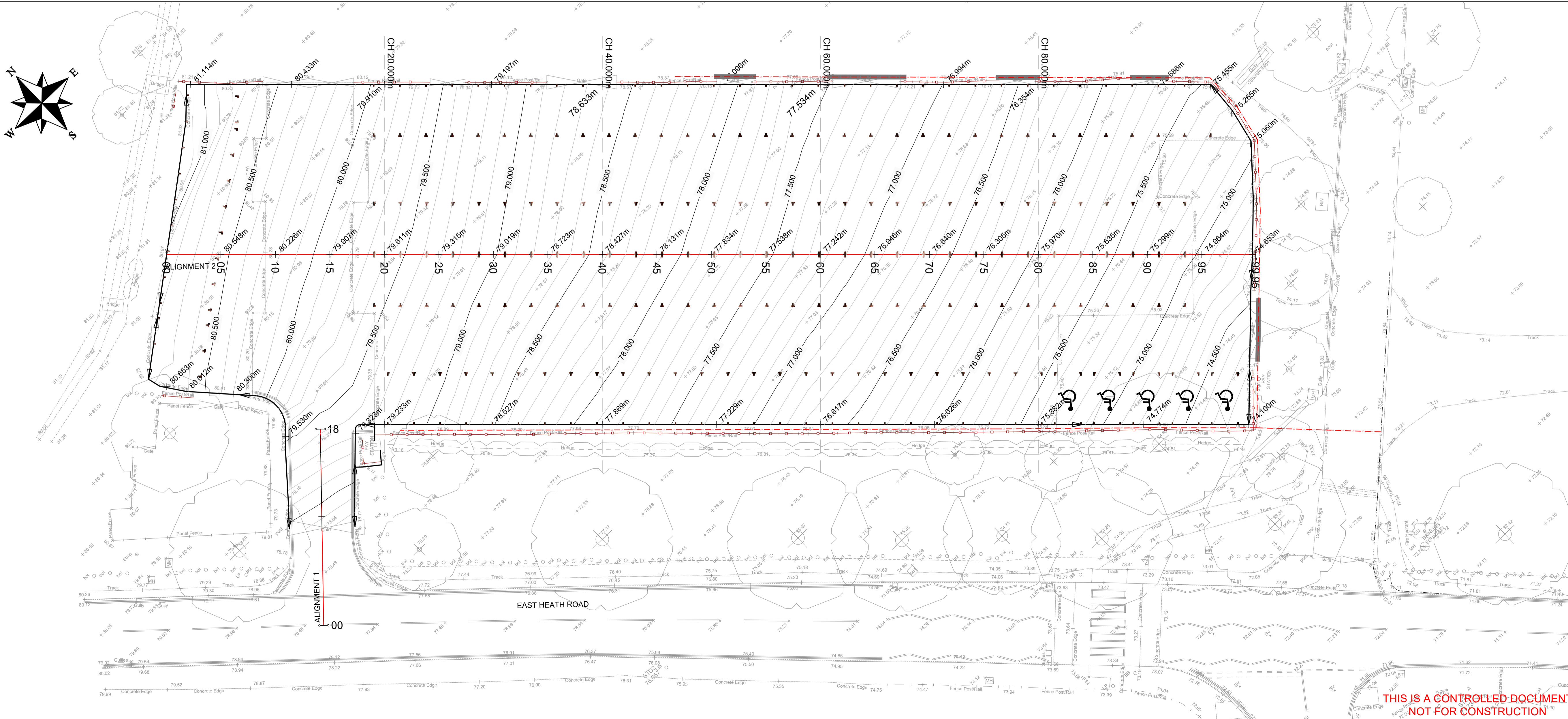


Project:	EAST HEATH CAR PARK		
Title:	PROPOSED DRAINAGE LAYOUT		
Date:	FEB 2018	Drawn:	JB
Scale:	1:200 @ A1	Checked:	DB
Drawing No:	TSP/COL/P3266/03	Status:	PRELIMINARY
Rev:			T2

**THIS IS A CONTROLLED DOCUMENT
 NOT FOR CONSTRUCTION**

Chainage	00.000	05.000	10.000	15.000	20.000	25.000	30.000	35.000	40.000	45.000	50.000	55.000	60.000	65.000	70.000	75.000	80.000	85.000	90.000	95.000	99.946	
Existing Levels	80.870	80.530	80.200	79.893	79.574	79.190	78.854	78.570	78.314	78.038	77.747	77.498	77.233	76.935	76.627	76.289	75.928	75.618	75.323	75.000	74.633	
Proposed Levels	80.870	80.548	80.226	79.952	79.611	79.315	78.919	78.523	78.127	77.731	77.335	76.939	76.543	76.147	75.751	75.355	74.959	74.563	74.167	73.771	73.375	
Level Difference	0.000	-0.017	-0.025	-0.021	-0.014	-0.036	-0.126	-0.164	-0.155	-0.113	-0.095	-0.086	-0.040	-0.009	-0.016	-0.013	-0.016	-0.042	-0.017	-0.023	-0.035	-0.000
Vertical Geometry	G = 1:16 L = 14.250										G = 1:17 L = 54.525					G = 1:15 L = 31.171						
Horizontal Geometry																						

ALIGNMENT 2 LONGSECTION
SCALE: H 1:200, V 1:200. DATUM: 74.000



T1	FOR TENDER	JB	DB	11/04/18
A	FIRST ISSUE	MK	JB	16/03/18
Rev	Description	Drawn	Checked	Date

Part of the Parsons Group

Stilwell

PARTNERSHIP

STILWELL LIMITED CONSULTING ENGINEERS
SATELLIET HOUSE
2 NEXUS PARK
ASH VALE
SURREY GU12 5QE

Tel: 01276 700400
Fax: 01252 544934
E-Mail: contactus@stilwell-ltd.co.uk
Web: www.stilwell-ltd.co.uk

Client:



Project: EAST HEATH CAR PARK

Title: SECTION LOCATION PLAN AND LONGSECTION

Date:	FEB 2018	Drawn:	MK	Checked:	JB
Scale:	1:200 @ A1	Status:	TENDER		
Drawing No:	TSP/COL/P3266/07	Rev:			T1

THIS IS A CONTROLLED DOCUMENT
NOT FOR CONSTRUCTION