

Disclaimer: In accordance with our duties under the Misrepresentation Act 1967 and the Misrepresentation Act 1991, these plans are not intended to constitute part of an offer of contract. No other contractual documents, including any correspondence, kind provided by CPC London or its Agents, whether written or verbal, upon as a statement of representation, nor its Agents have any authority to make any representation or warranty on behalf of CPC London, its Agents or the seller. Any plans, photos, and are indicative and cannot be guaranteed to represent the complete scheme. Any areas, measurements or distances given are approximate only. Any dimensions are approximate only and may be subject to variations or change. It is not possible to locate foundations to or use of any part of the property. **Liability is not accepted for any accuracy of information given.** All rights reserved to CPC London.

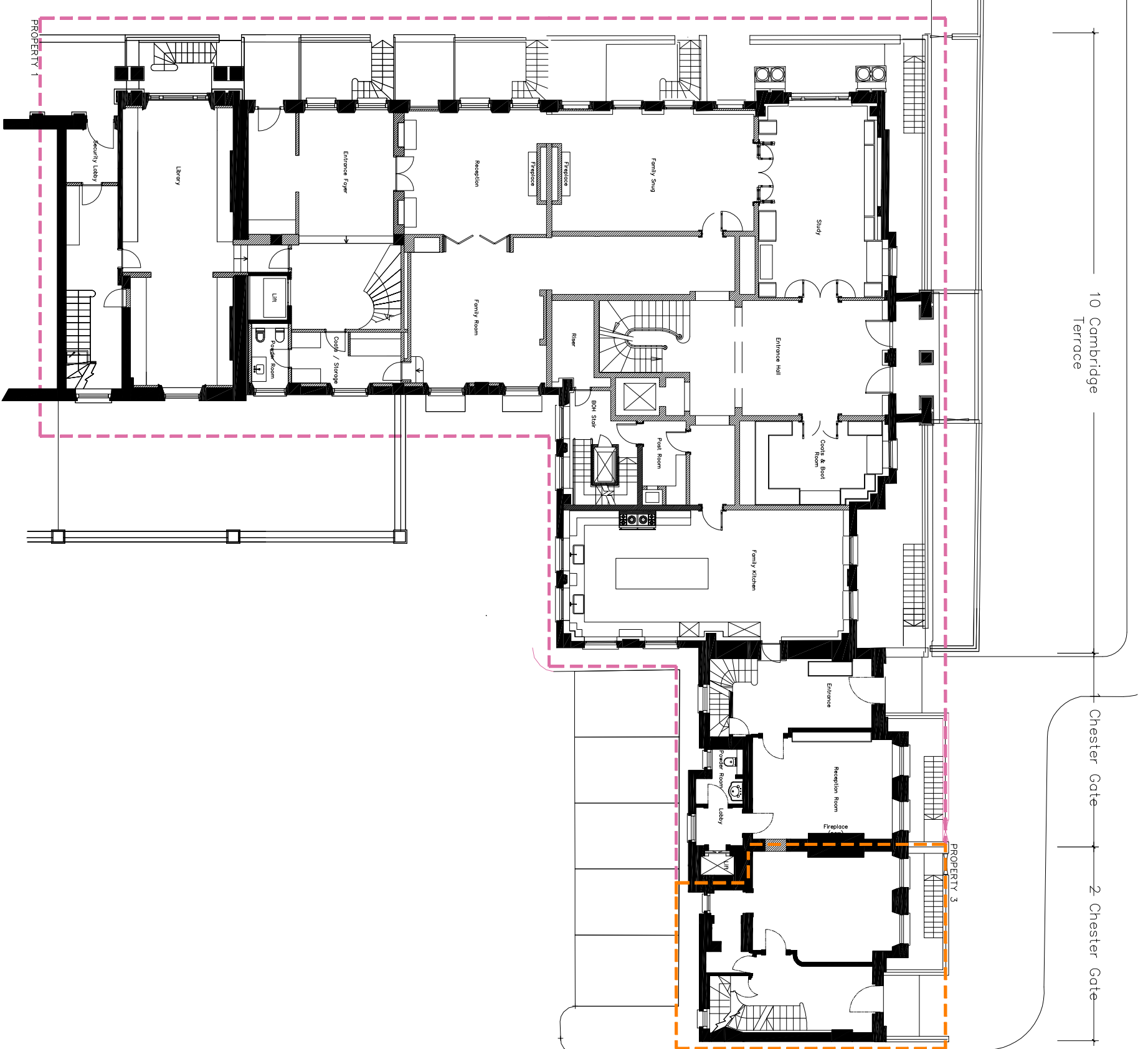


REV#	BY	DATE	DESCRIPTION

PROJECT CODE: Quod  
PROJECT TITLE: 6 - 10 Cambridge Terrace and 1-2 Chester Gate Regents Park London NW1

DRAWING TITLE: GROUND FLOOR PROPOSED  
DRAWN BY: NC  
CHECKED BY: NC

ISSUED FOR: PLANNING  
SCALE: 1:200 @ A3  
DATE: APRIL 18  
DRAWING NO: 639-2.003  
REVISION: E



10 Cambridge Terrace  
Chester Gate  
2 Chester Gate

6 Cambridge Terrace  
7 Cambridge Terrace  
8 Cambridge Terrace  
9 Cambridge Terrace  
10 Cambridge Terrace

PROPERTY 1

PROPERTY 3