

23A HAMPSTEAD HILL GARDENS, LONDON

BASELINE NOISE SURVEY

(22/09/2016 – 23/09/2016)

Report 14971.Baseline

Prepared on 26 September 2016

For:

Unit 14

J&Z Construction Ltd

715, North Circular Road

London

NW27AQ

Contents

1.0	INTRODUCTION	1
2.0	NOISE SURVEY	1
2.1	Procedure.....	1
2.2	Equipment.....	1
2.3	Results.....	1
3.0	CONCLUSIONS.....	2

List of Attachments

- 14971.SP1. Indicative Site Plan
 - 14971.TH1. Environmental Noise Time History
-

1.0 INTRODUCTION

KP Acoustics Ltd has been appointed by J&Z Construction Ltd, 14, 715 North Circular Road London, NW2 7AQ, to undertake baseline noise monitoring survey at 23A Hampstead Hill Gardens, London.

This report outlines the results of the baseline noise survey undertaken between the 22nd September 2016 and 23rd September 2016, in order to establish the current background levels prior to the commencement of all on-site operations.

2.0 NOISE SURVEY

2.1 Procedure

Automated noise monitoring was undertaken at the position as shown in Site Plan 14971.SP1. The choice of this position was based both on accessibility and on collecting representative noise data at the boundaries of the site.

Initial inspection of the site revealed that the background noise profile at the monitoring location was dominated by road traffic noise.

The weather during the course of the survey was generally dry with wind speeds within acceptable tolerances and therefore suitable for the measurement of environmental noise. The measurement procedure complied with ISO 1996-2:2007 Acoustics *“Description, measurement and assessment of environmental noise - Part 2: Determination of environmental noise levels”*.

2.2 Equipment

The equipment calibration was verified before and after the survey and no calibration irregularities were observed.

The equipment used was as follows.

- 1 No. Svantek Type 957 Sound Level Meter
- B&K Type 4231 Class 1 Calibrator

2.3 Results

The results from the continuous noise monitoring are shown as time histories of L_{Aeq} , L_{Amax} , L_{A10} and L_{A90} averaged over 5 minute sample periods in Figures 14971.TH1.

Average ambient and background noise levels during daytime and night-time are as shown in Table 2.1.

	Position – Front of the site, facing Hampstead Hill Gardens	
	Average ambient noise Levels LAeq dB(A)	Average background noise Levels LA90 dB(A)
Daytime (07:00-23:00)	53	45
Night-time (23:00-07:00)	46	39

Table 2.1: Measured ambient and background noise levels

3.0 CONCLUSIONS


Noise monitoring has been undertaken on site at 23A Hampstead Hill Gardens, London, so as to establish the ambient noise profile of the site prior to the commencement of all on-site works.

L_{Aeq} , L_{Amax} , L_{A10} and L_{A90} levels were measured between the 22nd September 2016 and 23rd September 2016, and average ambient noise levels during daytime and night-time periods have been analysed and reported.

Report by
George Hadjilambri BSc (Hons)
KP Acoustics Ltd.

Checked by
Kyriakos Papanagiotou MIOA
KP Acoustics Ltd.



 Noise Monitoring Position

Title:
Indicative site plan showing noise monitoring position

Date: 26 of September 2016

FIGURE 14971.SP1



23A Hampstead Hill Gardens, London
Environmental Noise Time History
22nd of September to 23rd of September 2016

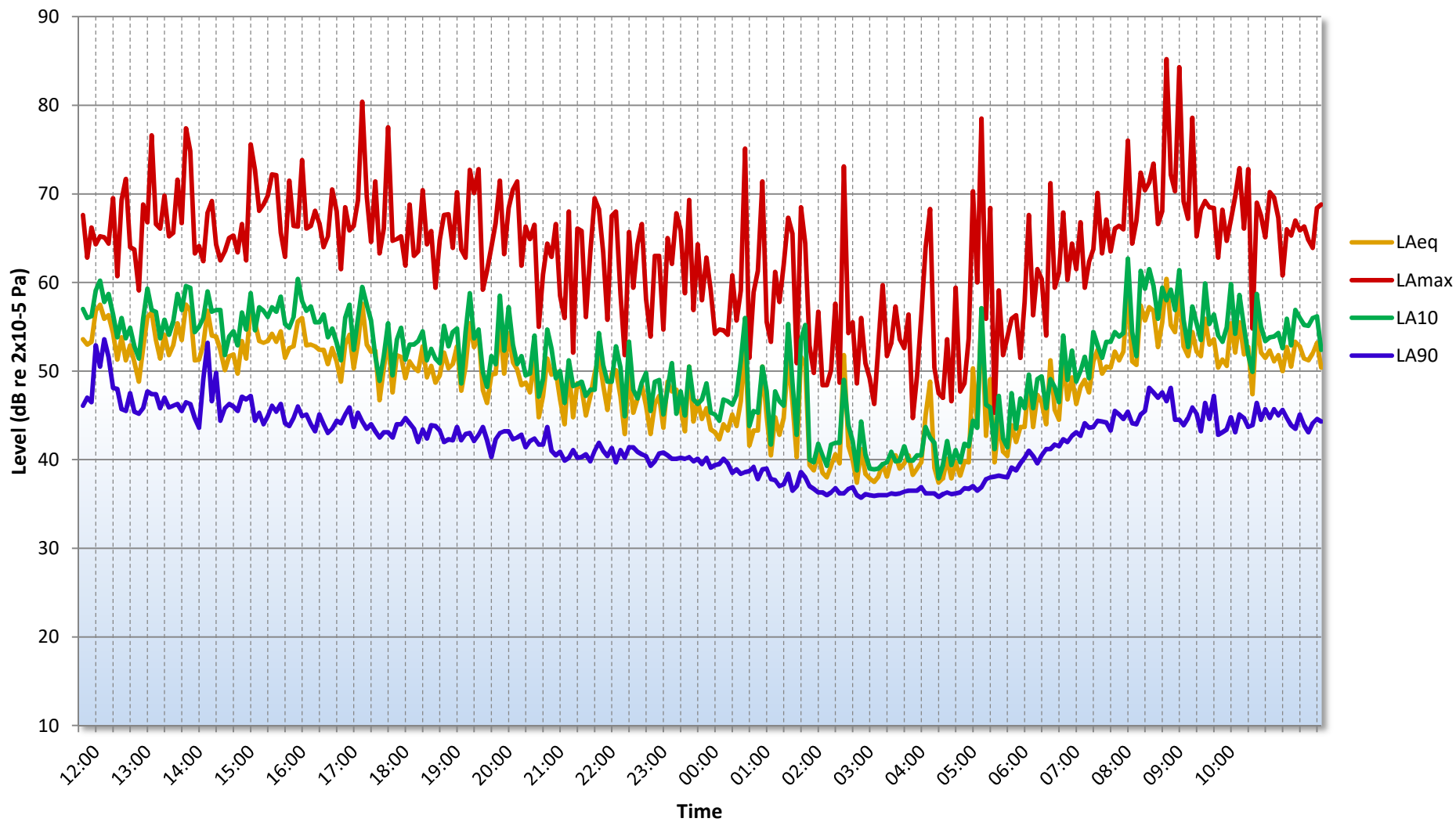


Figure 14971.TH1