



## LINCOLN'S INN

Supporting soft landscape information in relation to Planning Applications No. 2015/4402/P, 2015/4404/P & 2015/4408/P

Produced for The Honourable Society of Lincoln's Inn.

Date: 01/08/17

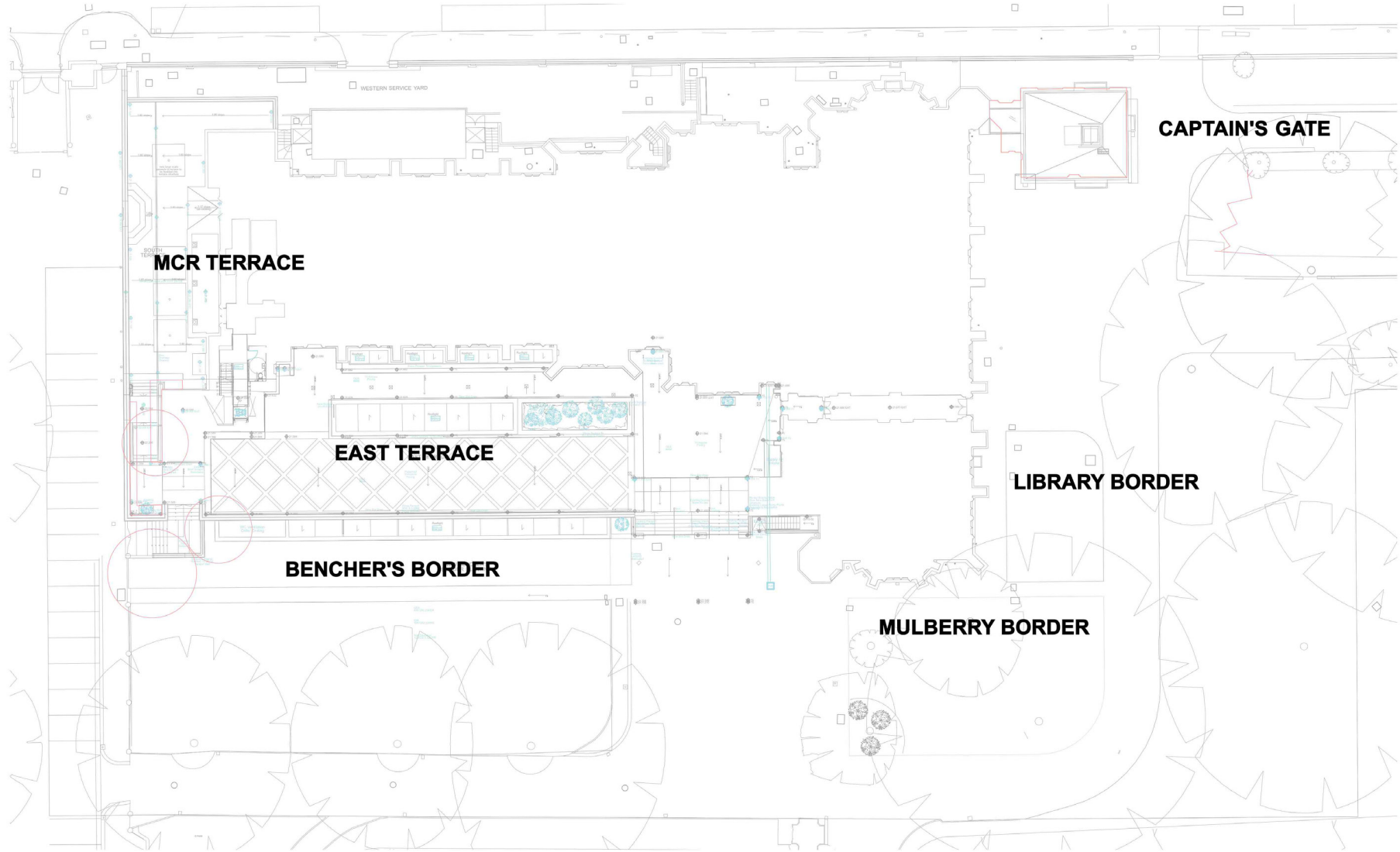


Supporting information prepared by

Jeremy Rye Studio

Rev	Details	By	Chk	Date

# Location Plan



# Bencher's Border

## Planting Design Intention.

The border to be framed by a 1.2 metre, double staggered, English yew hedge concealing the grille to the south end of the border. Seven 1.8m tall English yew cones are aligned to the architectural detail of the Great hall and placed on the central axis of the tower to the north end of the border.

The border is 47m x 3.8m. The herbaceous perennial and grasses planting scheme within the evergreen structure is designed to create interest through the seasons. Once the dead flower heads and grasses that give interest through the winter are cut back in February and March, the Tulips and peonies will provide the first colour along with fresh green foliage and followed by the early day lily, and Irises. Euphorbia, ferns and foxgloves play a role before the daisies and roses emerge. Towards mid to late summer a bolder display of monbretias, red hot poker and grasses come into flower.

The perennials are arranged in two groups alternating along the border. A number of complimentary plants are used in both groups to link the planting together. The shady corners evergreen ferns are planted to soften and give interest. Shrub roses, peonies and irises in pastel shades are formally arranged on the south end of the border between the yew buttresses.

The flower colours range is predominantly pastel shades in the yellow orange and red spectrum. Stronger tones are used selectively in bursts through the seasons. The grass foliage and flower seed heads have been selected to provide autumn and winter interest.

The tallest and longest flowering plants are distributed evenly and set out to weave between the yew cones along the border.

## Planning References.

With reference to planning application no:

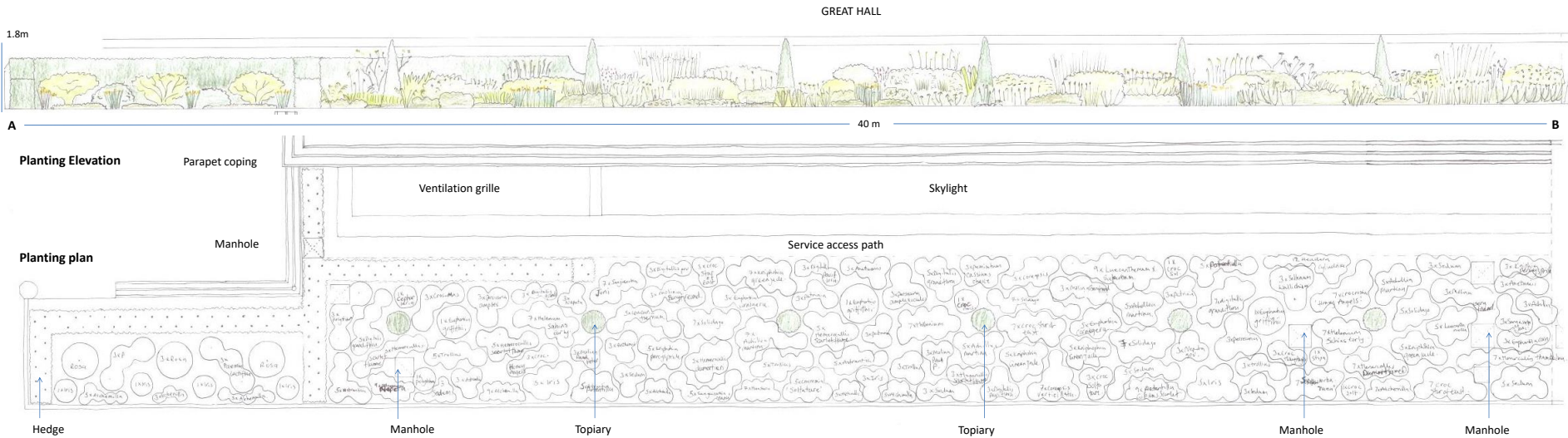
Application 2 2015/4402/P & 2015/4500/L  
2015/4402/P condition 6 - replacement tree  
2015/4402/P condition 9 - hard and soft landscape works

Application 3 2015/4404/P & 2015/4498/L  
2015/4404/P condition 7 - replacement tree  
2015/4404/P condition 10 - hard and soft landscape details  
2015/4404/P condition 11 - hard and soft landscape works

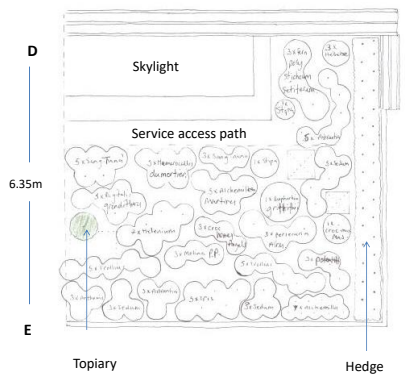
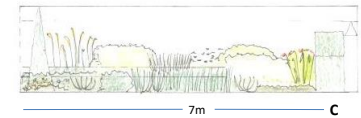
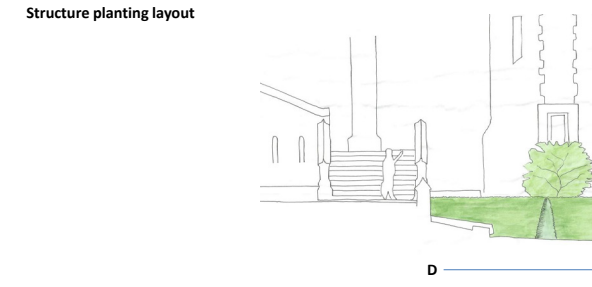
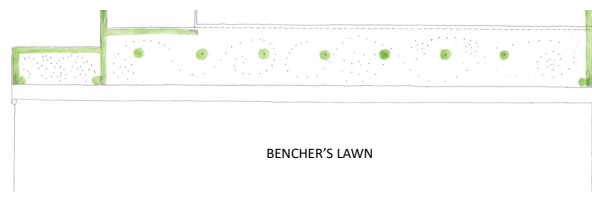
Application 4 2015/4408/P & 2015/4541/L  
2015/4408/P condition 7 - green wall  
2015/4408/P condition 10 - hard and soft landscape details  
2015/4408/P condition 11 - hard and soft landscape works

With reference to the Landscape Habitat Management Plan:

Chapter 3 Habitat Management Plan  
3.1 Bird boxes; 3.2 Bat boxes 3.3 Native landscape planting  
Chapter 4 Additional Measures  
Additional measure no. 4 - Creation of new habitat



Qty	Description	Type	Size cm	Pot size Litre
<b>Planting Schedule</b>				
Type: RB = Root ball, BR = Bare rooted, CG = Container grown				
All plants to comply with National Plant Specification, BS 3936, BS 4043 and HTA Standards				
<b>Specimen shrub</b>				
	Hedging			
12	Taxus baccata hedging	RB	60/80	
79	Taxus baccata hedging	RB	100/120	
<b>Topiary specimen</b>				
7	Taxus baccata Topiary	RB/CG Cone	180/200	
<b>Shrub</b>				
6	Paeonia lactiflora 'Marie Lemoine'	CG		2L
<b>Herbaceous</b>				
21	Astrantia major subsp. involucrata 'Shaggy'	CG		2L
30	Achillea 'Martina'	CG		2L
51	Alchemilla erythropoda	CG		2L
11	Anthemis tinctoria 'E.C. Buxton'	CG		2L
17	Crocsmia x crocosmiflora 'Star of the East'	CG		2L
10	Crocsmia x crocosmiflora 'solfatare '	CG		2L
16	Crocsmia x crocosmiflora 'Honey Angels	CG		2L
12	Coreopsis verticillata 'Moonbeam	CG		2L
5	Crocsmia masonorum (Beth Chatto's selection)	CG		3L
1	Cephalaria alpina	CG		3L
20	Digitalis grandiflora	CG		2L
9	Digitalis parviflora	CG		2L
4	Euphorbia griffithii 'Dixter'	CG		5L
11	Euphorbia cornigera	CG		5L
18	Hemerocallis 'Scarlet Flame'	CG		2L
28	Helium 'Sahin's Early Flowerer'	CG		2L
17	Hemerocallis dumortieri	CG		2L
7	Hemerocallis thumbeiana	CG		2L
19	Heuchera cylindrica 'Greenfinch'	CG		1L
3	Helleborus foetidus	CG		2L
17	Iris 'Butter and Sugar' (Sib)	BR		-
10	Kniphofia 'Percy's Pride'	CG		2L
17	Kniphofia 'Green Jade'	CG		2L
19	Leucanthemum x superbum 'Sonnenschein'	CG		2L
15	Nepeta gowaniana	CG		2L
17	Potentilla 'Gibson's Scarlet'	CG		2L
9	Patrinia scabiosifolia	CG		2L
12	Persicaria amplexicaulis 'Alba'	CG		2L
25	Sedum telephium ssp. maximum 'Gooseberry Fool'	CG		2L
10	Sanguisorba officinalis Joni	CG		2L
20	Sanguisorba officinalis 'Tanna'	CG		2L
26	Solidago goldenmosa	CG		2L
3	Selinum wallichianum	CG		5L
26	Trollius x cultorum 'New Moon'	CG		2L
7	Polystichum setiferum	CG		5L
3	Stipa calamagrostis	CG		10L
9	Molinia Poul Petersen	CG		5L
9	Molinia Bergfreund	CG		5L
5	Pennisetum Cassians Choice	CG		3L
<b>Bulb</b>				
108	Tulipa sprengeri	full size		
35	Nectaroscordum siculum subsp. Bulgaricum	full size		
3	Rosa 'Golden Wings'	full size		10L



The Honourable Society of Lincoln's Inn	
Title	Bencher's Border
Scale	1:50 @ A1
Date	June 2017
By	Karen Clayton

## Mulberry Lawn and Library Border

### Planting Design Intention.

This is a woodland style garden and includes a new border to replace the existing motorcycle car park, and mulberry lawn. Planting here will provide a solution to the struggling lawn and offer a softer ornamental frame at the foot of the building.

The planting colour scheme will reflect the plants used in the Bencher's' border and include a higher density of cream and white to darken up the shade, with concentrated hints of stronger oranges and yellow. The predominant interest comes from contrasting foliage texture, form and colour.

The seasons reflected in the planting arrangement differ and offer a contrast to the Bencher's border. There are low growing scented winter flowering shrubs, early spring bulbs and late summer flowering perennials.

A formal layout of clipped evergreen domes with a low hedge line the paths providing structure to the looser planting arrangement within the borders.

Evergreen and deciduous shrubs are used to develop an informal frame within the borders, and align with the tree trucks and architecture features of the surrounding buildings. Larger drifts of herbaceous plants flow between both borders.

### Planning References.

With reference to planning application no:

Application 2 2015/4402/P & 2015/4500/L  
2015/4402/P condition 6 - replacement tree  
2015/4402/P condition 9 - hard and soft landscape works

Application 3 2015/4404/P & 2015/4498/L  
2015/4404/P condition 7 - replacement tree  
2015/4404/P condition 10 - hard and soft landscape details  
2015/4404/P condition 11 - hard and soft landscape works

Application 4 2015/4408/P & 2015/4541/L  
2015/4408/P condition 7 - green wall  
2015/4408/P condition 10 - hard and soft landscape details  
2015/4408/P condition 11 - hard and soft landscape works

With reference to the Landscape Habitat Management Plan:

Chapter 3 Habitat Management Plan  
3.1 Bird boxes; 3.2 Bat boxes 3.3 Native landscape planting  
Chapter 4 Additional Measures  
Additional measure no. 4 - Creation of new habitat