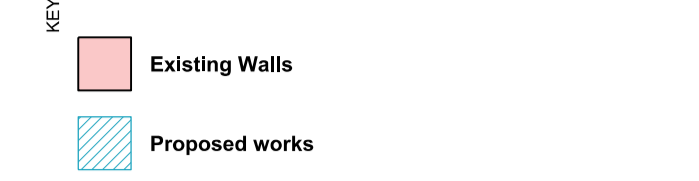


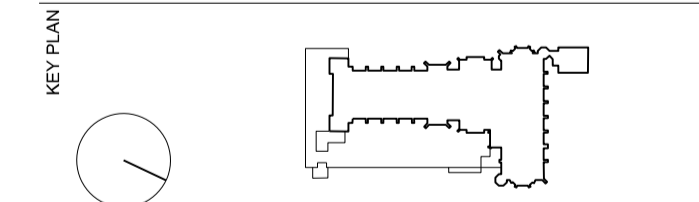
DO NOT SCALE FROM THIS DRAWING. CONTRACTOR TO CHECK ALL DIMENSIONS ON SITE. ANY DISCREPANCIES TO BE REPORTED TO THE ARCHITECT IMMEDIATELY.  
 COPYRIGHT RICK MATHER ARCHITECTS LLP ©



Refer to 597-17100 & 17101 for East Terrace insulation & drainage layouts.  
 Refer to 597-51115 for the slot drain schedule relevant to the whole project.  
 Refer to 597-51116 for the slot drain access panel schedule for the whole project.  
 For drainage specifications, refer to the schedules noted above and the relevant IDS information.  
 This drawing is to be read in conjunction with the full IDS drawing/ specification package.  
 This drawing must be read in colour.

REVISIONS

REV	DATE	DESCRIPTION
C2	02.02.18	BENCHERS BORDER PATH SPEC AMENDED
C1	29.01.18	CONSTRUCTION
T5	05.02.16	TENDER
REV		



STATUS  
**CONSTRUCTION**

**RICK MATHER ARCHITECTS ©**  
 123 Garden Way Street London N91 7JF  
 T: 020 7244 1232 F: 020 7244 1233  
 info@rickmather.com www.rickmather.com

JOB  
**THE HONOURABLE SOCIETY OF LINCOLN'S INN  
 GREAT HALL AND LIBRARY**

TITLE  
**PROPOSED GREAT HALL PROJECT  
 PROPOSED LANDSCAPE DETAIL PLAN  
 EAST TERRACE (2 of 2)**

CHECKED

DRWN	NMW	JOB #	DRG #	REV
TP	SCALE@A1	597	17012	C2
	1:50		A1	
	1:100		A3	
			DATE	Jan 16'
			REV/DATE	02.02.18

FOR CONTINUATION OF DRAWING REFER TO 597-17015

Refer to Library drawing series