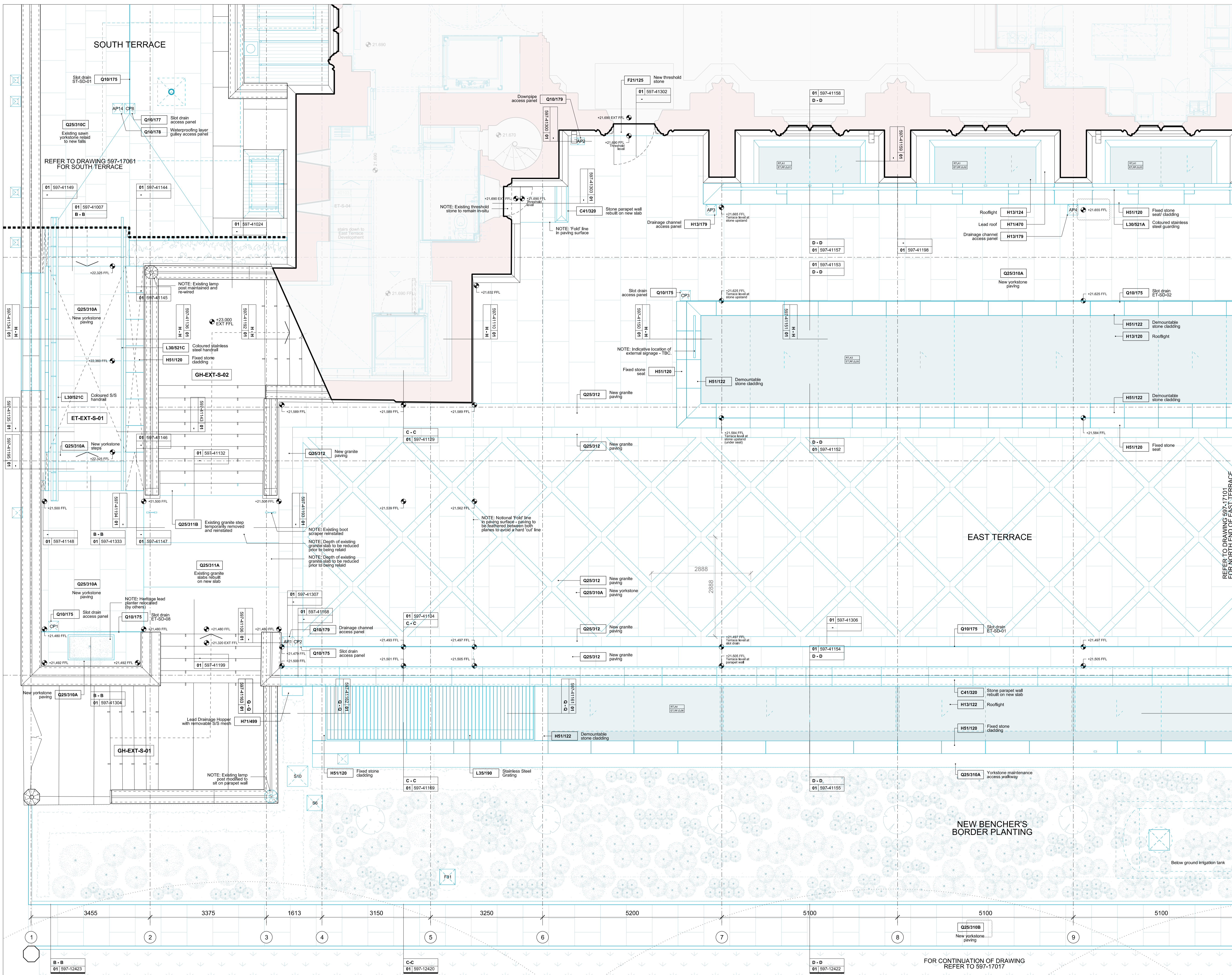
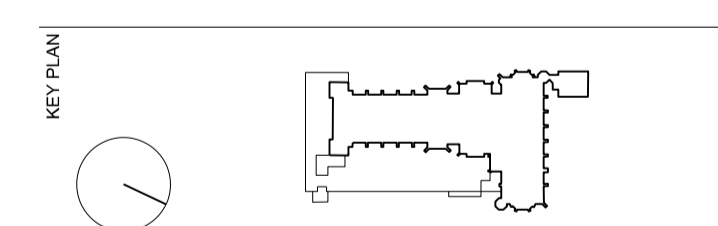


Refer to 597-17100 & 17101 for East Terrace insulation & drainage layouts.
 Refer to 597-11115 for the slot drain schedule relevant to the whole project.
 Refer to 597-11116 for the slot drain access panel schedule for the whole project.
 For drainage specifications, refer to the schedules noted above and the relevant IDS information.
 This drawing is to be read in conjunction with the full IDS drawing/s specification package.
 This drawing must be read in colour.



REVISIONS

NO	DATE	DESCRIPTION
C2	02.02.18	BENCHERS BORDER SPEC AMENDED
C1	29.01.18	CONSTRUCTION
REV		DATE DESCRIPTION



CONSTRUCTION

RICK MATHER ARCHITECTS ©
 123 Camden High Street London N1W 7AR
 T: 020 7246 1232 F: 020 7246 1233
 rick@mather.com www.rickmather.com

JOB
**THE HONOURABLE SOCIETY OF LINCOLN'S INN
 GREAT HALL AND LIBRARY**

TITLE
**PROPOSED GREAT HALL PROJECT
 PROPOSED TERRACE
 EAST TERRACE (1 OF 2)**

DRAWN	NMW	JOB #	597	DRG #	17011	REV	C2
CHECKED	TP	SCALE	1:50	SIZE	A1	DATE	Jan '18
			1:100		A3	REV/DATE	02.02.18

FOR CONTINUATION OF DRAWING
 REFER TO 597-17017