

Bird, bat and insect houses.

For further information please see Landscape Habitat Management Plan

Bird Boxes

Schwegler Bird Box 1B & 2M



Redstart Boxes

Schwegler Open Fronted Box 2H



Planning References

With reference to planning application no:

Application 2 2015/4402/P & 2015/4500/L
2015/4402/P condition 6 - replacement tree
2015/4402/P condition 9 - hard and soft landscape works

Application 3 2015/4404/P & 2015/4498/L
2015/4404/P condition 7 - replacement tree
2015/4404/P condition 10 - hard and soft landscape details
2015/4404/P condition 11 - hard and soft landscape works

Application 4 2015/4408/P & 2015/4541/L
2015/4408/P condition 7 - green wall
2015/4408/P condition 10 - hard and soft landscape details
2015/4408/P condition 11 - hard and soft landscape works

With reference to the Landscape Habitat Management Plan:

Chapter 3 Habitat Management Plan
3.1 Bird boxes; 3.2 Bat boxes 3.3 Native landscape planting
Chapter 4 Additional Measures
Additional measure no. 4 - Creation of new habitat

Bat Boxes

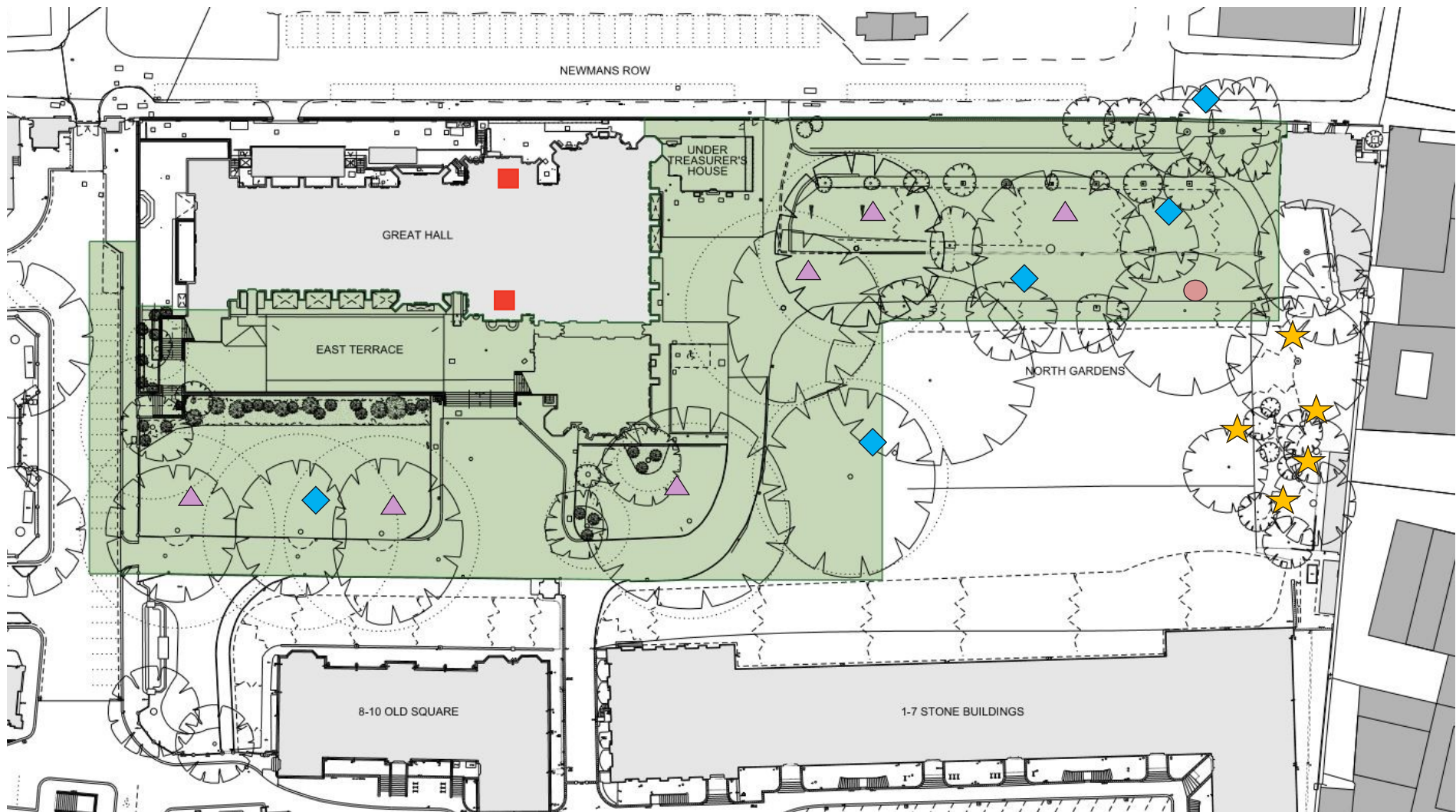
Schwegler Bat Box 1FW



Insect Houses

Schwegler Reed Insect Nesting Aid & Nesting Combi





- 1 x Bat box
- 6 x single species bird boxes
- 5 x multi-chamber bird boxes
- 5 x insect houses
- 2 x Redstart bird box

Location sites for bird, bat nests and insect houses

The Honourable Society of Lincoln's Inn	
Title	Habitat management Map
Date	June 2017
By	Karen Clayton

Bird, Bat and Insect Houses Plan

