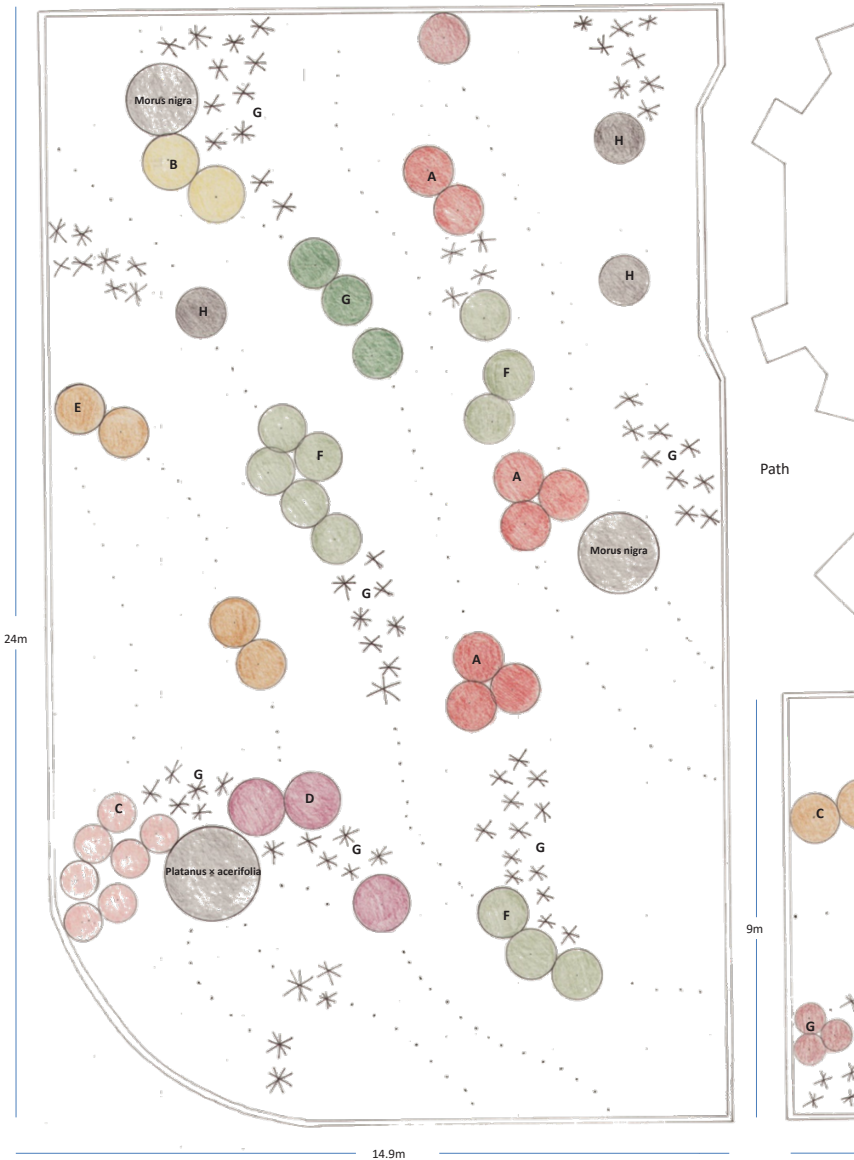


Mulberry Lawn structure planting key

- A = Hydrangea macrophylla 'Lanarth white'
 B = Hydrangea quercifolia
 C = Mahonia aquifolium 'Apollo'
 D = Osmanthus decorus
 E = Ribes laurifolium
 F = Sarcococca hookeriana var. digna 'Purple stem'
 G = Spirea japonica 'Albiflora'
 H = Skimmia confusa 'Kew Green'
 G = Matteuccia struthiopteris
 H = Dryopteris wallichiana



Mulberry Lawn Planting Schedule

Type: RB = Root ball, BR = Bare rooted, CG = Container grown
 All plants to comply with National Plant Specification, BS 3936, BS 4043 and HTA Standards

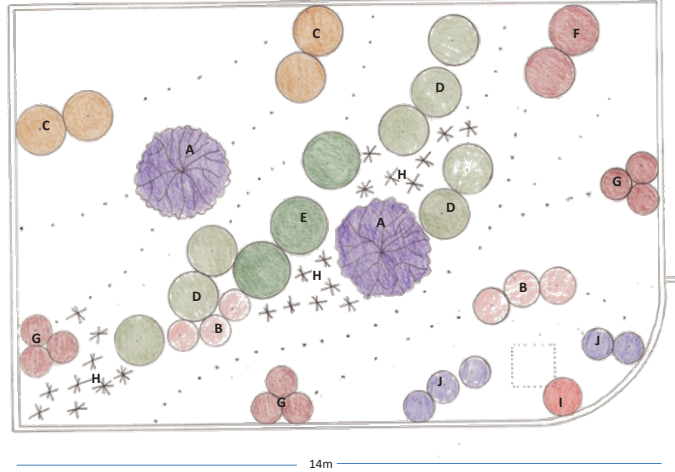
Qty	Description	Type	size cm	Pot size Litre
Shrubs				
8	Hydrangea macrophylla 'Lanarth White' (L)	CG	15L	
2	Hydrangea quercifolia	CG	15L	
7	Mahonia aquifolium 'Apollo'	CG	10L	
3	Osmanthus decorus	CG	10L	
4	Ribes laurifolium	CG	10L	
10	Sarcococca hookeriana var. digna 'Purple Stem'	CG	5L	
3	Spiraea japonica 'Albiflora'	CG	10L	
1	Skimmia x confusa 'Kew Green' (m)	CG	10L	
Herbaceous				
25	Astrantia major 'Alba'	CG	2L	
44	Astrantia major 'Star of Billion' (PBR)	CG	2L	
10	Anemone x hybrida 'Honorine Jobert'	CG	3L	
55	Alchemilla erythropoda	CG	1L	
34	Brunnera macrophylla 'Betty Downing'	CG	2L	
24	Bergenia 'Silberlicht'	CG	2L	
5	Corydalis ochroleuca	CG	2L	
50	Carex morrowii 'Fisher's Form' (v)	CG	2L	
12	Cardamine trifolia	CG	2L	
12	Disporum sessile 'Variegatum'	CG	2L	
22	Digitalis lutea	CG	2L	
35	Dicentra 'Aurora'	CG	2L	
63	Eurybia divaricata - (syn. Aster divaricatus)	CG	2L	
21	Epimedium x versicolor 'Sulphureum'	CG	2L	
32	Epimedium 'Amber Queen' (PBR)	CG	2L	
55	Epimedium x youngianum 'Niveum'	CG	2L	
12	Euphorbia amygdaloides var. robbiae	CG	2L	
55	Filipendula vulgaris 'Multiflex'	CG	2L	
32	Fragaria vesca (F)	CG	2L	
48	Geranium macrorrhizum 'White-ness'	CG	2L	
21	Gillenia trifoliata	CG	3L	
25	Geranium phaeum var. phaeum 'Samobor'	CG	2L	
85	Helleborus x hybridus 'Yellow Lady' (Lady Series)	CG	3L	

Library Border Planting Schedule

Type: RB = Root ball, BR = Bare rooted, CG = Container grown
 All plants to comply with National Plant Specification, BS 3936, BS 4043 and HTA Standards

Qty	Description	Type	size cm	Pot size Litre
Climber				
2	Amelanchier lamarckii (multi-stem)	Multistem	2.5 / 3 to 45L	
Specimen shrubs				
6	Mahonia aquifolium 'Apollo'		10L	
8	Sarcococca hookeriana var. digna 'Purple Stem'		5L	
3	Spiraea japonica 'Albiflora'		10L	
9	Skimmia japonica 'Fragrans' (m)		5L	
2	Skimmia x confusa 'Kew Green' (m)		10L	
Herbaceous				
20	Astrantia major 'Alba'		2L	
32	Astrantia major 'Star of Billion' (PBR)		2L	
12	Anemone x hybrida 'Honorine Jobert'		3L	
25	Carex morrowii 'Fisher's Form' (v)		2L	
9	Cardamine trifolia		2L	
22	Digitalis lutea		2L	
15	Dicentra 'Aurora'		2L	
22	Epimedium x youngianum 'Niveum'		2L	

Path



Library border structure planting key

- A = Amelanchier lamarckii multistem
 B = Mahonia aquifolium 'Apollo'
 C = Ribes laurifolium
 D = Sarcococca hookeriana var. digna 'Purple stem'
 E = Spirea japonica 'Albiflora'
 F = Skimmia confusa 'Kew Green'
 G = Skimmia japonica 'Fragrans'
 H = Dryopteris cycadina
 I = Iris foetidissima var. citrina
 J = Helleborus x hybridus 'Yellow lady'

25	Helleborus foetidus	CG	2L	
9	Iris foetidissima var. citrina	CG	3L	
5	Kirengeshoma palmata	CG	5L	
55	Liriope muscari 'Monroe White'	CG	2L	
9	Lamprocapnos spectabilis 'Alba'	CG	3L	
27	Maianthemum stellatum	CG	3L	
66	Mitella breweri	CG	2L	
66	Omphalodes verna 'Alba'	CG	2L	
24	Polemonium caeruleum subsp. caeruleum f. album	CG	2L	
12	Disporopsis pernyi	CG	2L	
8	Rodgersia podophylla 'Rotlaub'	CG	3L	
75	Tiarella wherryi	CG	2L	
12	Tiarella cordifolia	CG	2L	
35	Tellima grandiflora Rubra Group	CG	2L	
25	Tellima grandiflora	CG	2L	
9	Thalictrum delavayi 'Album'	CG	2L	
15	Veratrum nigrum	CG	3L	
24	Valeriana alliarifolia	CG	3L	
Ferns				
33	Asplenium trichomanes	CG	2L	
25	Asplenium scolopendrium	CG	2L	
15	Dryopteris cycadina	CG	3L	
10	Dryopteris wallichiana	CG	5L	
30	Matteuccia struthiopteris	CG	5L	
2	Onoclea sensibilis	CG	5L	
35	Polystichum setiferum (Divisilobum Group) 'Herrenha'	CG	2L	
Grass				
50	Luzula nivea	CG	2L	
24	Chasmanthium latifolium	CG	2L	
Bulbs				
144	Anemone nemorosa (Rhizomes)			
33	Convallaria majalis			
20	Erythronium 'Pagoda'			
20	Erythronium californicum 'White Beauty'			
225	Galanthus nivalis	in the green		
25	Lilium x martagon 'Orange Marmalade'			
12	Lilium 'Russian Morning'			

24	Fragaria vesca (F)		2L	
16	Geranium macrorrhizum 'White-ness'		2L	
27	Gillenia trifoliata		3L	
15	Helleborus x hybridus 'Yellow Lady' (Lady Series)		3L	
3	Iris foetidissima var. citrina		3L	
32	Mitella breweri		2L	
20	Polemonium caeruleum subsp. caeruleum f. album		2L	
25	Tiarella wherryi		2L	
25	Tellima grandiflora Rubra Group		2L	
25	Tellima grandiflora		2L	
24	Valeriana alliarifolia		3L	
Fern				
11	Asplenium trichomanes		2L	
15	Dryopteris cycadina		3L	
30	Polystichum setiferum (Divisilobum Group) 'Herrenhausen'		2L	
Grass				
15	Luzula nivea		2L	
Bulbs				
112	Anemone nemorosa Vestal			
15	Erythronium californicum 'White Beauty'			
225	Galanthus nivalis			
10	Lilium x martagon 'Orange Marmalade'			
5	Lilium 'Russian Morning'			

The Honourable Society of Lincoln's Inn	
Title	Mulberry lawn & Library border
Scale	1:50 @ A1
Date	June 2017
By	Karen Clayton

Mulberry Border and Library Border Plan

Captain's Gate

Planting Design Intention.

A narrow 7 m raised border along the new library to be planted with a single species of Hydrangea. This evergreen flowering species is slow growing and suitable for north facing positions. The dark green foliage is attractive and robust. The plant will cover the edge and side walls of the building self-supported.

Planning References.

With reference to planning application no:

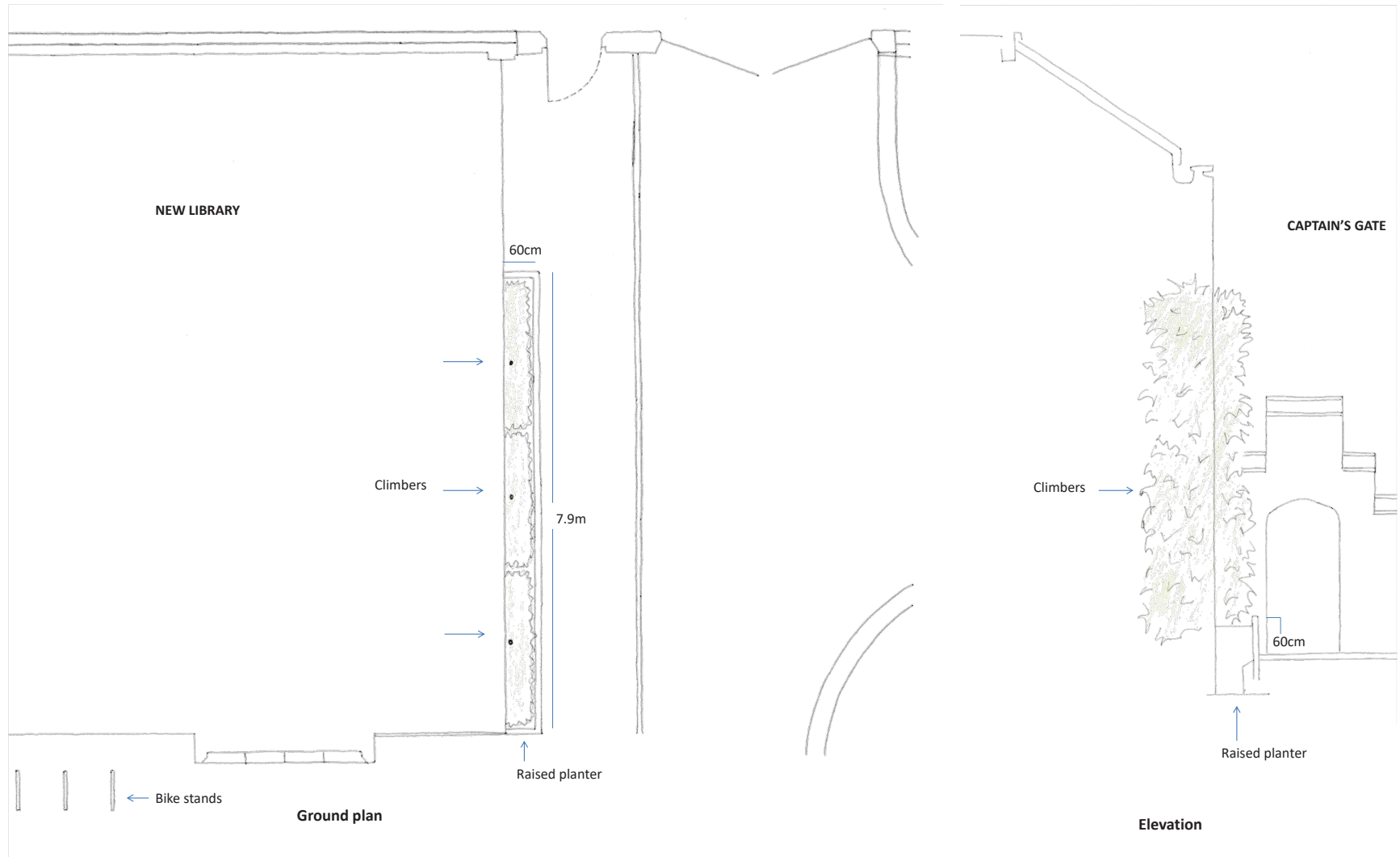
Application 2 2015/4402/P & 2015/4500/L
2015/4402/P condition 6 - replacement tree
2015/4402/P condition 9 - hard and soft landscape works

Application 3 2015/4404/P & 2015/4498/L
2015/4404/P condition 7 - replacement tree
2015/4404/P condition 10 - hard and soft landscape details
2015/4404/P condition 11 - hard and soft landscape works

Application 4 2015/4408/P & 2015/4541/L
2015/4408/P condition 7 - green wall
2015/4408/P condition 10 - hard and soft landscape details
2015/4408/P condition 11 - hard and soft landscape works

With reference to the Landscape Habitat Management Plan:

Chapter 3 Habitat Management Plan
3.1 Bird boxes; 3.2 Bat boxes 3.3 Native landscape planting
Chapter 4 Additional Measures
Additional measure no. 4 - Creation of new habitat



Planting Schedule				
Type: RB = Root ball, BR = Bare rooted, CG = Container grown				
All plants to comply with National Plant Specification, BS 3936, BS 4043 and HTA Standards				
Qty	Description	Type	size cm	Pot size Litre
	Climber			
3	<i>Hydrangea seemanii</i>	CG	100-120 Frames	15L

The Honourable Society of Lincoln's Inn	
Title	Planting plan Captain's Gate
Scale	1:50 @ A2
Date	June 2017
By	Karen Clayton

Captain's Gate Plan

MCR Terrace

Planting Design Intention.

A raised stone clad 7m border at the entrance is planted with a low formal myrtle hedge.

An exotic style planting theme is carried throughout the planters and raised border on the MCR Terrace. Five large cube planters on the west side contain an elegant slow growing hardy jelly palm at 1.5m in height and spread, under planted with California poppy.

Large exotic evergreen foliage plants are positioned to create a structure and support the lower growing planting in the rectangular planters. Within the rectangular planters, a mix of tender succulents and bright orange, red, maroon, bronze and yellow coloured perennials are used as bedding to compliment and contrast between a permanent framework of plants.

The raised planter on the East side contains a permanent year round display.

Planning References.

With reference to planning application no:

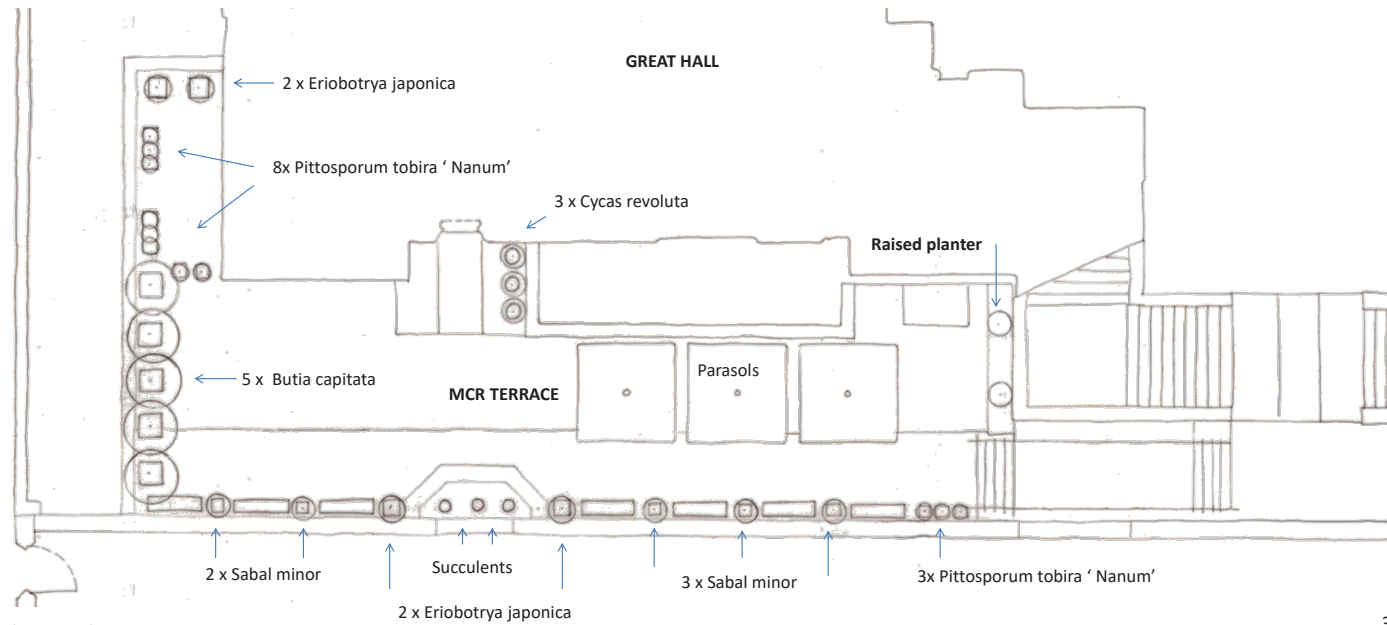
Application 2 2015/4402/P & 2015/4500/L
2015/4402/P condition 6 - replacement tree
2015/4402/P condition 9 - hard and soft landscape works

Application 3 2015/4404/P & 2015/4498/L
2015/4404/P condition 7 - replacement tree
2015/4404/P condition 10 - hard and soft landscape details
2015/4404/P condition 11 - hard and soft landscape works

Application 4 2015/4408/P & 2015/4541/L
2015/4408/P condition 7 - green wall
2015/4408/P condition 10 - hard and soft landscape details
2015/4408/P condition 11 - hard and soft landscape works

With reference to the Landscape Habitat Management Plan:

Chapter 3 Habitat Management Plan
3.1 Bird boxes; 3.2 Bat boxes 3.3 Native landscape planting
Chapter 4 Additional Measures
Additional measure no. 4 - Creation of new habitat



Planting plan

7 rectangular planters. Total area approx. 5.5 m ²	
Description	Qty
Palms	
Chamaerops humilis/ bedding 3 ltr	18
Herbaceous	
Astelia nervosa 'Westland'	9
Libertia peregrinans	16
Succulents	
Agave lophantha	9
Aeonium arboreum 'Atropurpureum'	20
Aeonium arboreum 'Magnificum'	20
Echeveria secunda var. glauca	12
Bedding	
Arctotis x hybrida hort. 'Flame'	30
Cuphea ignea	30
Cosmos atrosanguinus	30
Eschscholzia californica	30
Eucomis bicolor	21

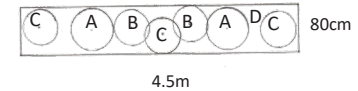
Planting Schedule			
Type: RB = Root ball, BR = Bare rooted, CG = Container grown			
All plants to comply with National Plant Specification, BS 3936, BS 4043 and HTA Standards			
Qty	Description	Type	Pot size Litre
	Specimen shrub		
4	Eriobotrya japonica (F)	Half Standard, CG	35L
2	Schefflera taiwaniana		5L
	Palm		
5	Butia capitata	CG	50L
3	Cycas revoluta	CG	20/30L
18	Chamaerops humilis	CG	3L
5	Sabal Minor	CG	35L
11	Pittosporum tobira 'Nanum'	CG	9L
	Herbaceous		
9	Astelia nervosa 'Westland'	CG	3L
2	Euphorbia characias subsp. wulfenii	CG	5L
5	Libertia chilensis	CG	5L
16	Libertia peregrinans	CG	1L
5	Polystichum setiferum	CG	3L
	Succulents		
9	Agave lophantha	Cg	3L
20	Aeonium arboreum 'Atropurpureum'	CG	1L
20	Aeonium arboreum 'Magnificum'	CG	1L
12	Echeveria secunda var. glauca	CG	1L
	Bedding		
30	Arctotis x hybrida hort. 'Flame'	CG	T9
30	Cuphea ignea	CG	T9
30	Cosmos atrosanguinus	CG	T9
30	Eschscholzia californica	CG	T9
	Bulbs		
21	Eucomis bicolor - 3 per 30 cm pot	Full size	top size

Planters			
QTY	Description	Size cm	Location
3	Lead Egg cup plain design	45 x 45	MCR
3	Round tapered plain lead	30 x 48	MCR
7	Round tapered plain lead	30 x 48	Treasury Office ent.
4	Cube ribbed lead	55 x 55	MCR
5	Cube ribbed lead	70 x 70	MCR
1	Cube ribbed lead	70 x 70	Treasury Office ent.
8	Cube plain lead	45 x 45	MCR
Existing planters			
QTY	Description	Size cm	Location
3	rectangular lead ribbed	129 x 55 x 76	MCR
7	rectangular lead ribbed	129 x 55 x 76	MCR
2	Cube lead	45 x 45	MCR
1	Cube lead	45 x 76	Surplus

Raised planter elevation

- A = Schefflera taiwaniana
- B = Euphorbia characias subsp wulfenii
- C = Libertia chilensis
- D = Polystichum setiferum

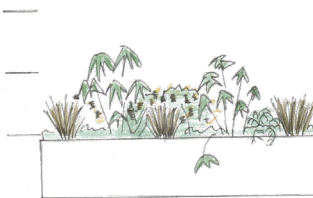
Raised planter planting plan



3m

2m

1m



The Honourable Society of Lincoln's Inn

Title	Planting plan MRC
Scale	1:100 @ A2
Date	June 2017
By	Karen Clayton

East Terrace

Planting Design Intention.

The 9 x 2.5 metre new raised planter with stone seat surround has a spilt level planting depth.

A low maintenance evergreen planting scheme is laid out formally, using complimentary green shades and tones with contrasting foliage form and texture for definition.

Four mature half standard Ligustrums' are under planted with an evergreen mat forming plant that has cream white flowers in spring accompanied by a rust coloured pom-pom flowering robust grass species.

Seven small round tapered lead pots stand side by side lining the wall edge and containing clipped domes of Myrtle.

At the base of the Great Hall tower a large cube planter contains a mature evergreen Arbutus with cream bell flowers in early summer followed by red orange fruits, persisting throughout the winter.

Planning References.

With reference to planning application no:

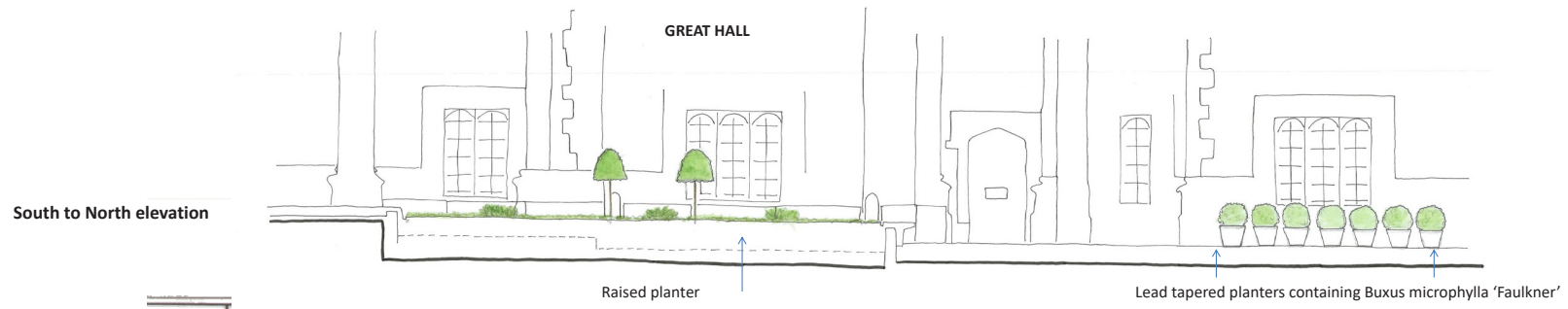
Application 2 2015/4402/P & 2015/4500/L
2015/4402/P condition 6 - replacement tree
2015/4402/P condition 9 - hard and soft landscape works

Application 3 2015/4404/P & 2015/4498/L
2015/4404/P condition 7 - replacement tree
2015/4404/P condition 10 - hard and soft landscape details
2015/4404/P condition 11 - hard and soft landscape works

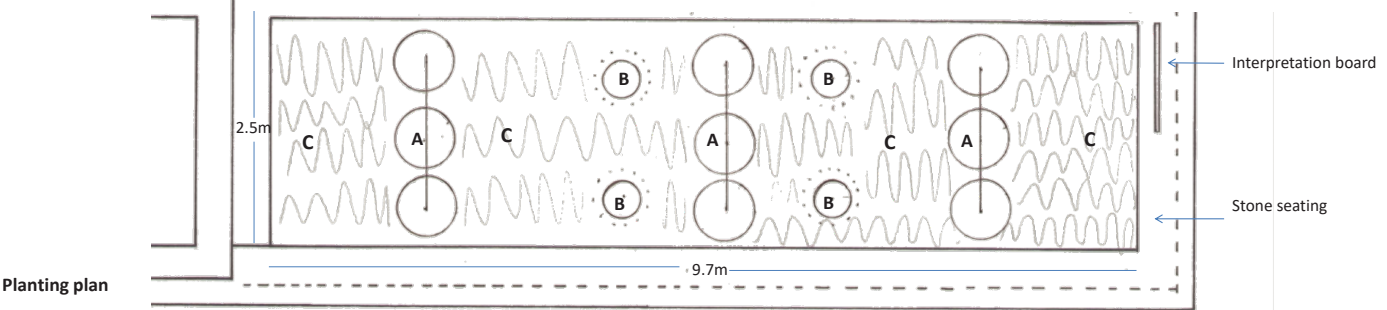
Application 4 2015/4408/P & 2015/4541/L
2015/4408/P condition 7 - green wall
2015/4408/P condition 10 - hard and soft landscape details
2015/4408/P condition 11 - hard and soft landscape works

With reference to the Landscape Habitat Management Plan:

Chapter 3 Habitat Management Plan
3.1 Bird boxes; 3.2 Bat boxes 3.3 Native landscape planting
Chapter 4 Additional Measures
Additional measure no. 4 - Creation of new habitat



South to North elevation



Planting plan

- A = Carex muskingumensis
- B = Ligustrum lucidum
- C = Pachysandra terminalis 'Green Carpet'



West to East elevation

Planting Schedule					
Qty	Description	Type	size cm	Pot size Litre	
	Specimen shrubs				
4	Ligustrum lucidum	Half Standard	80/100, CG	160/180 tall, 50/60 dia	25L
1	Arbutus menziesii	Specimen tree		175/200 tall	45L
	Clipped balls - round lead pots				
7	Buxus microphylla 'Faulkner'	CG		30/45 dia	3/5L
	Herbaceous				
28	Pachysandra terminalis 'Green Carpet'	CG			1/2L
	Grass				
9	Carex muskingumensis	CG		max height 40	3L

The Honourable Society of Lincoln's Inn	
Title	Treasury office entrance
Scale	1:50 @ A2
Date	June 2017
By	Karen Clayton

Replacement Tree

Planting Design Intention.

Celtis australis, European Nettle Tree

Planted at 7-9 metres height and 40/45 girth.

Planning References.

With reference to planning application no:

Application 2 2015/4402/P & 2015/4500/L
2015/4402/P condition 6 - replacement tree
2015/4402/P condition 9 - hard and soft landscape works

Application 3 2015/4404/P & 2015/4498/L
2015/4404/P condition 7 - replacement tree
2015/4404/P condition 10 - hard and soft landscape details
2015/4404/P condition 11 - hard and soft landscape works

Application 4 2015/4408/P & 2015/4541/L
2015/4408/P condition 7 - green wall
2015/4408/P condition 10 - hard and soft landscape details
2015/4408/P condition 11 - hard and soft landscape works

With reference to the Landscape Habitat Management Plan:

Chapter 3 Habitat Management Plan
3.1 Bird boxes; 3.2 Bat boxes 3.3 Native landscape planting
Chapter 4 Additional Measures
Additional measure no. 4 - Creation of new habitat



Planting size

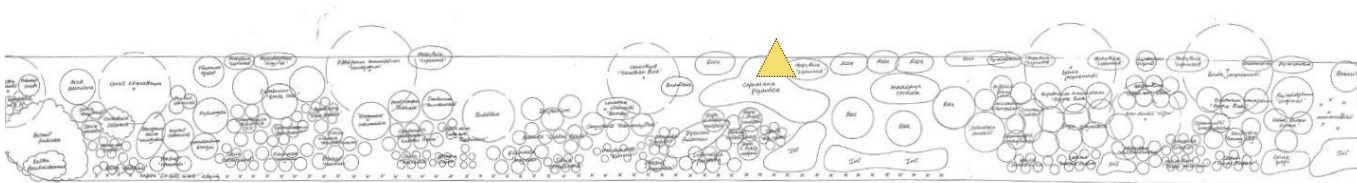


Location



Celtis australis, European nettle tree

- ◆ Eventual height & spread in 20 years
- ◆ Planting size: 7-9m height at 40/45 girth, Instant 5m +
- ◆ Location: West border (Replacing declining Ceanothus)



West Border: 2015



The Honourable Society of Lincoln's Inn	
Title	Tree replacement plan
Date	June 2017
By	Karen Clayton