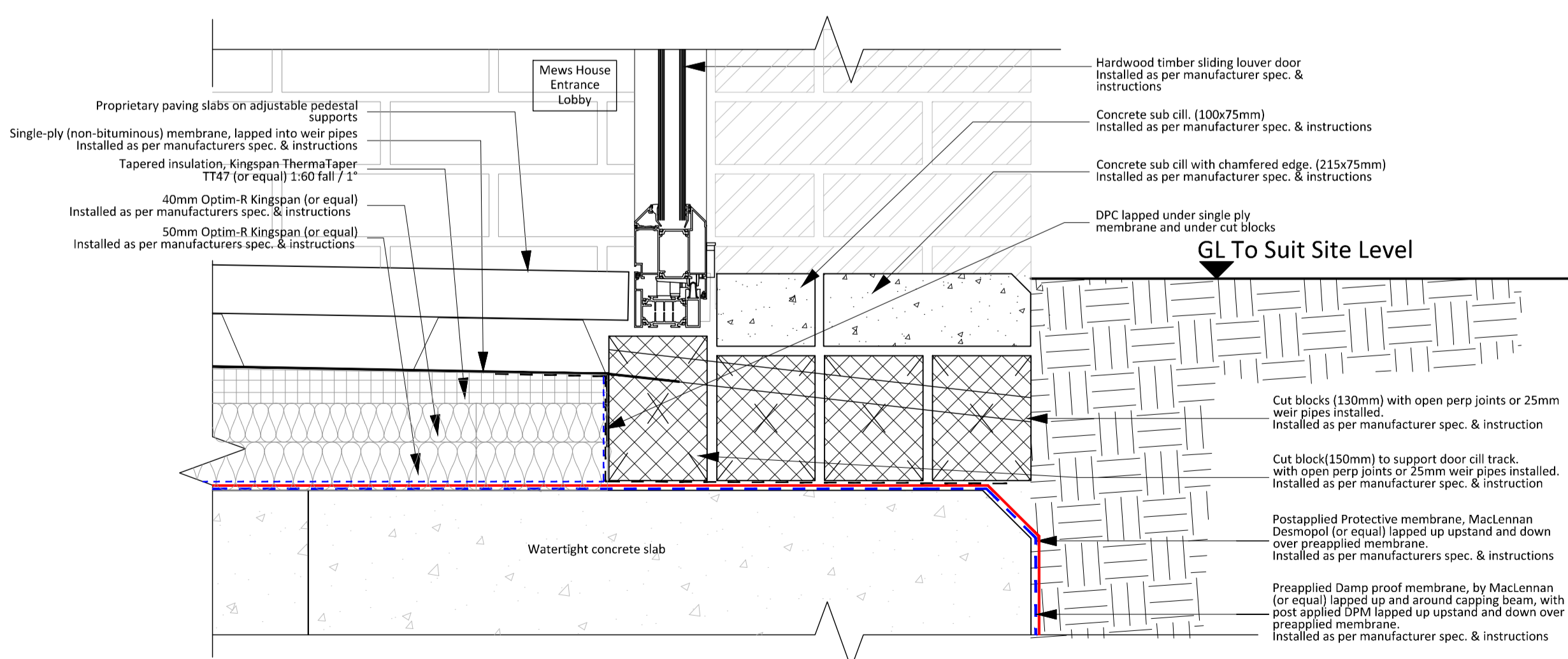


DR113 - Typical Ext. Sliding Door Head Detail  
1 : 5

NOTE:  
THIS DRAWING HAS BEEN PRODUCED BY ELECTRONIC MEANS. SHOULD THE SCALE MEASUREMENTS BE TAKEN BY MEANS OTHER THAN ELECTRONIC (e.g. FROM A PRINTED COPY), THE FOLLOWING MUST BE TAKEN INTO CONSIDERATION BEFORE SCALING IS UNDERTAKEN:  
1. ENSURE THAT THE COPY HAS BEEN PRINTED/PLOTTED ON THE STATED SHEET SIZE WITH THE PLOTTING SCALE SET TO A CORRECT RATIO.  
2. ENSURE THAT AN ADEQUATE ALLOWANCE (DEPENDANT ON THE STATED SCALE) IS MADE FOR THE INEVITABLE DISTORTIONS INTRODUCED BY PLOTTING/PRINTING AND COPYING PROCESSES.  
3. MARKED CRITICAL DIMENSIONS ARE TO BE REGARDED AS HAVING PRECEDENCE OVER THE SCALED VALUES.

Note:  
Basement waterproofing systems designed by a waterproofing design specialist to NHBC requirements. Designers (MacLennan or equal) who have successfully completed the Certified Surveyor in Structural Waterproofing (CSSW) qualification available from the Property Care Association (PCA). CSSW to provide sign off for the final design.



DR114 - Typical Ext. Sliding Door Cill Detail  
1 : 5

REV	DESCRIPTION	DATE	INIT	CHKD



Client  
Rydon  
Project  
Ashton Court, Camden Park Road, Camden  
Title  
Door Details - Sheet 3

Scale 1:5@A1 Date 04.04.18 Drawn By MA Checked By BPH Project No: K160423 Drawing No: A (2)522 Revision ~

St Johns House 1A Knoll Rise Orpington Kent BR6 0JX  
01689 888222 orpington@calfordseaden.com

calfordseaden LLP is a Limited Liability Partnership Registered in England & Wales number OC135838

ORPINGTON | LONDON | BIRMINGHAM | CAMBRIDGE | SOUTHEAST-ON-SEA | WINCHESTER

calfordseaden.com

CONSTRUCTION