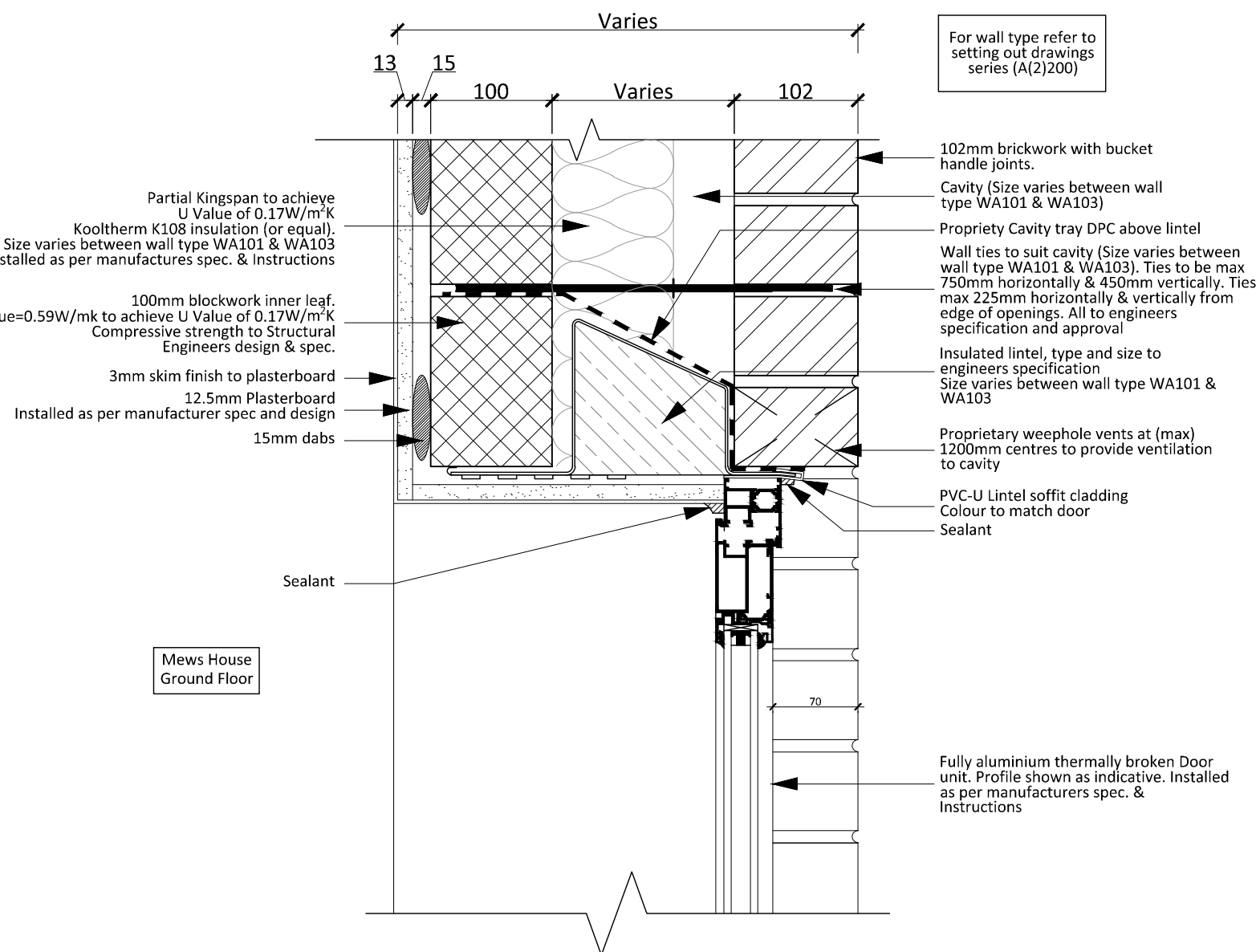
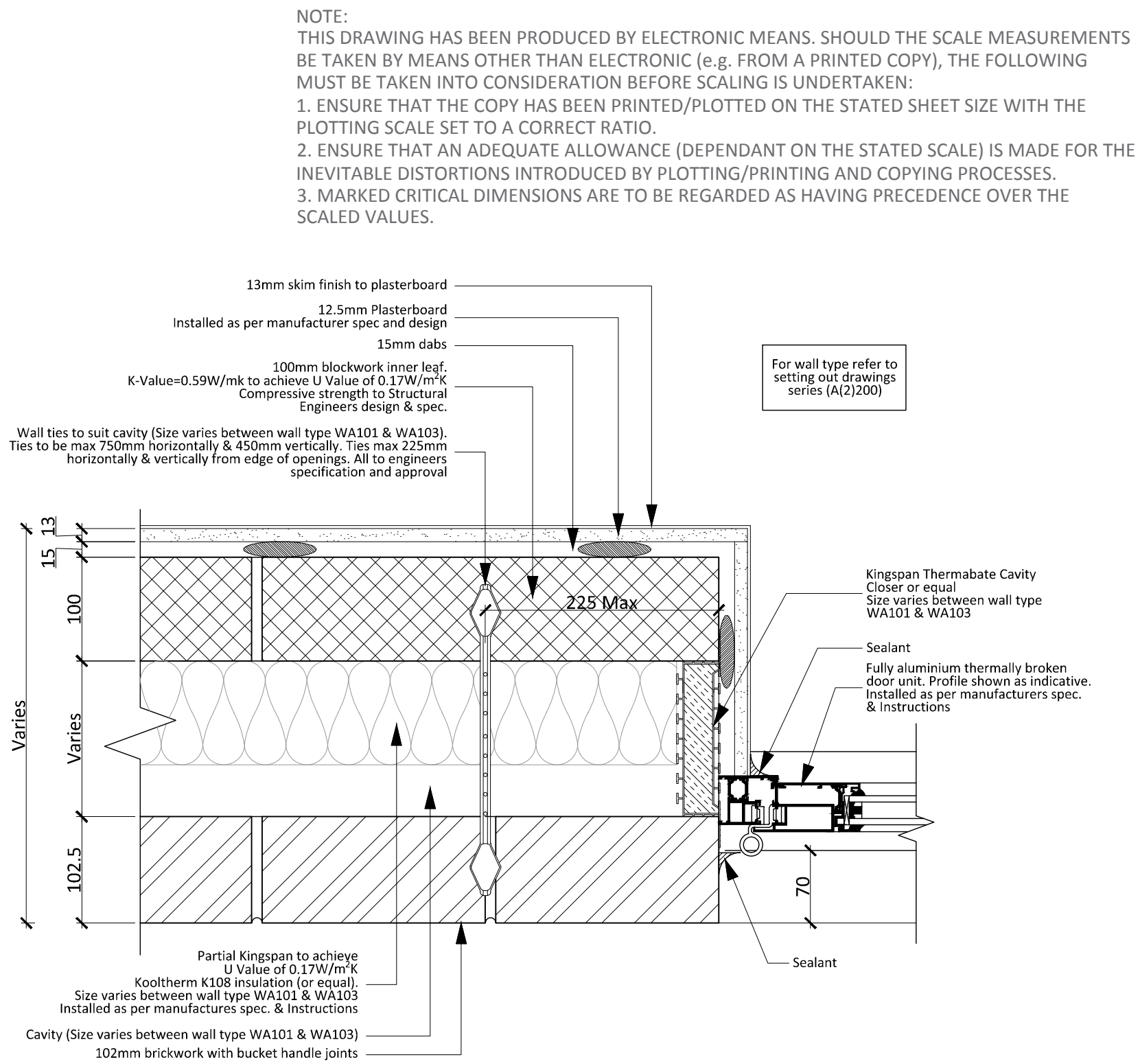


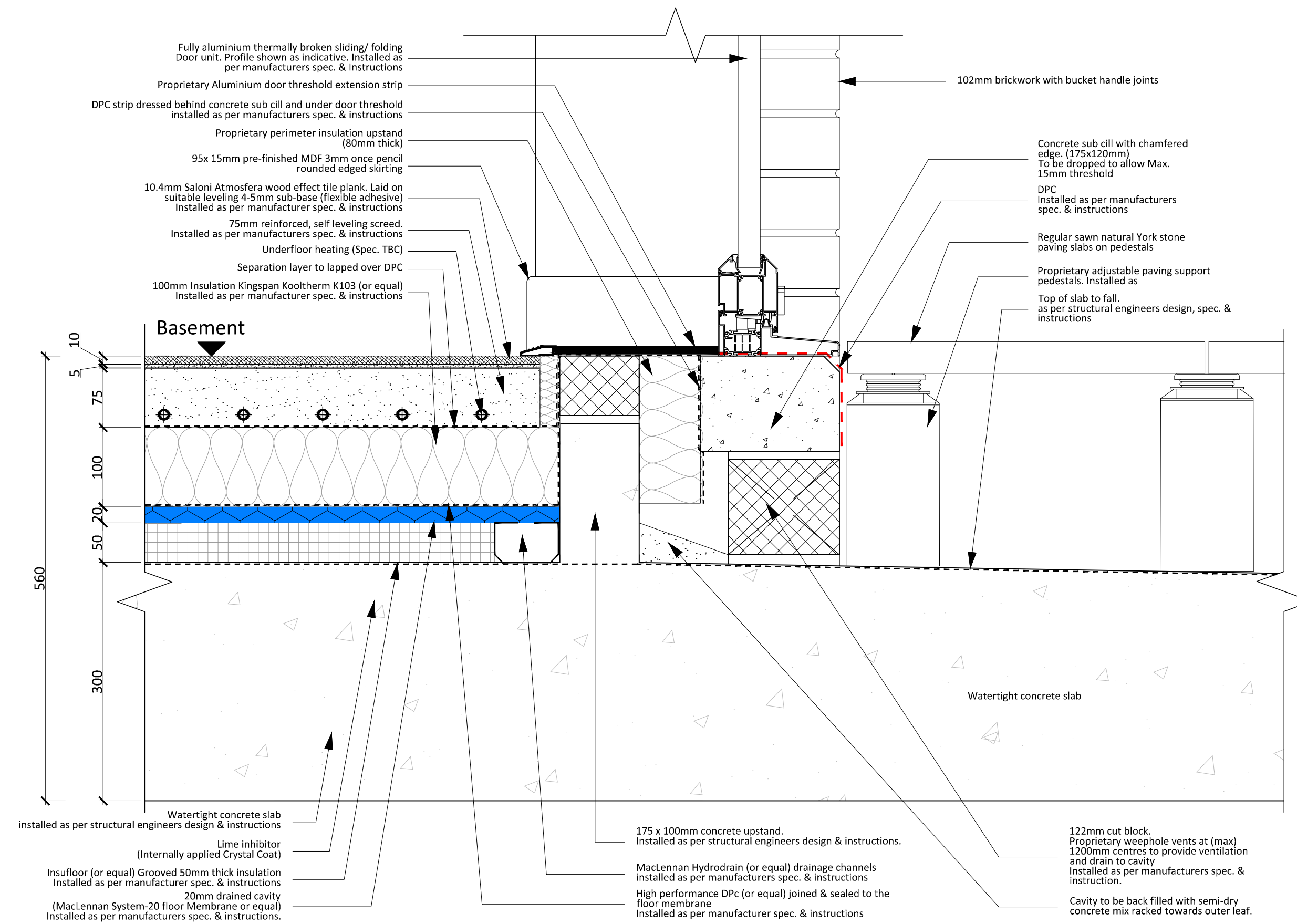
DR109 - Typical Ext. Door Threshold Entrance Lobby  
1 : 5



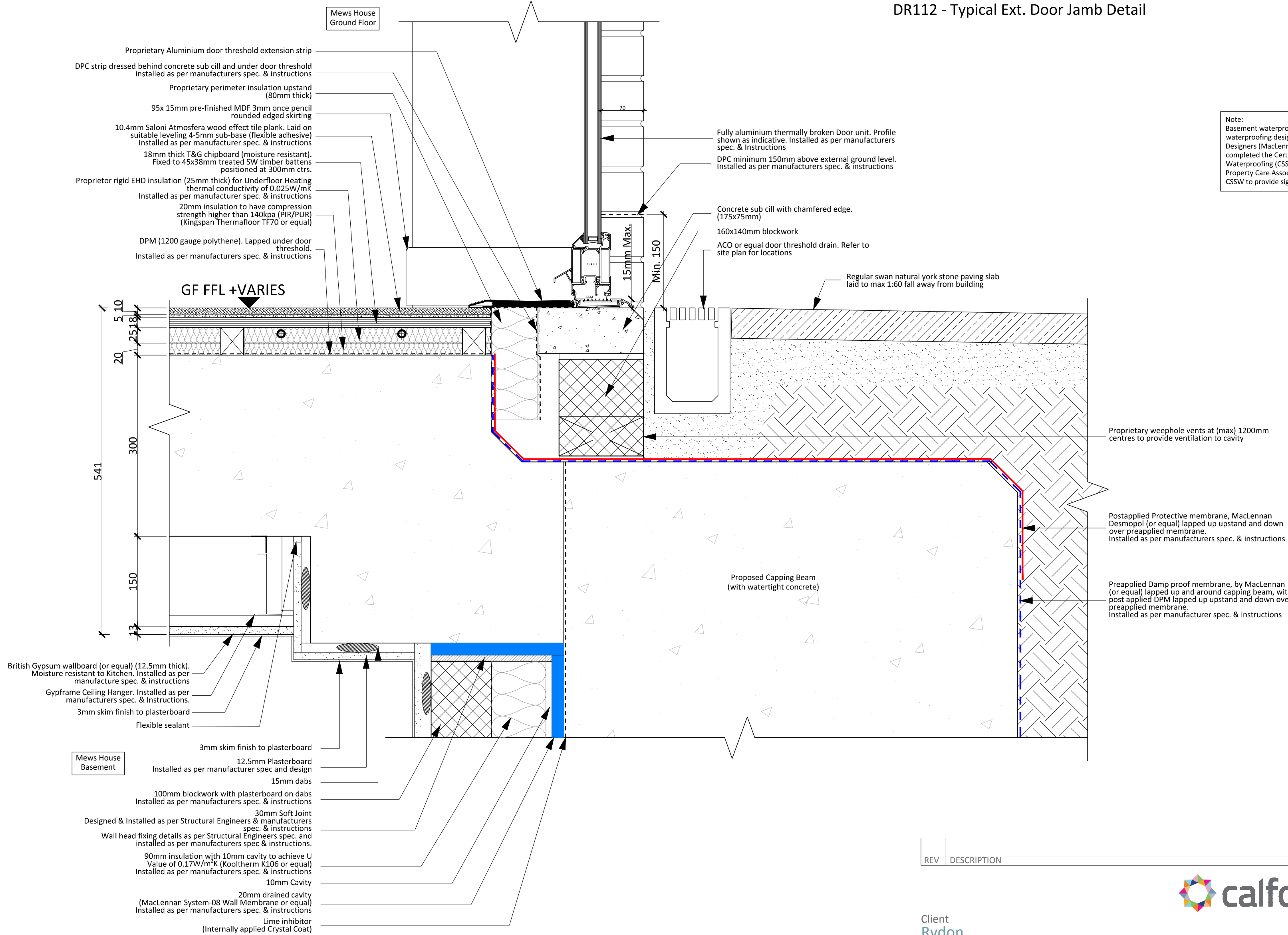
DR111 - Typical Ext. Door Head Detail  
1 : 5



DR112 - Typical Ext. Door Jamb Detail



DR110 - Typical Ext. Folding Sliding Door Threshold - Wall Terrace Junction Detail  
1 : 5



DR108 - Typical Ext. Door Threshold Detail (Plot 1 rear)  
1 : 5

REV	DESCRIPTION	DATE	INIT	CHKD
-----	-------------	------	------	------



Client  
Rydon  
Project  
Ashton Court, Camden Park Road, Camden  
Title  
Door Details - Sheet 2

Scale  
1:5@A1  
Date  
05.04.18  
Drawn By  
MA  
Checked By  
BPH  
Project No:  
K160423  
Drawing No:  
A (2)521  
Revision  
~

St Johns House 1A Knoll Rise Orpington Kent BR6 0JX  
01689 888222 orpington@calfordseaden.com  
calfordseaden LLP is a Limited Liability Partnership Registered in England & Wales number OC315838

ORPINGTON | LONDON | BIRMINGHAM | CAMBRIDGE | SOUTHDOWN-ON-SEA | WINCHESTER

calfordseaden.com