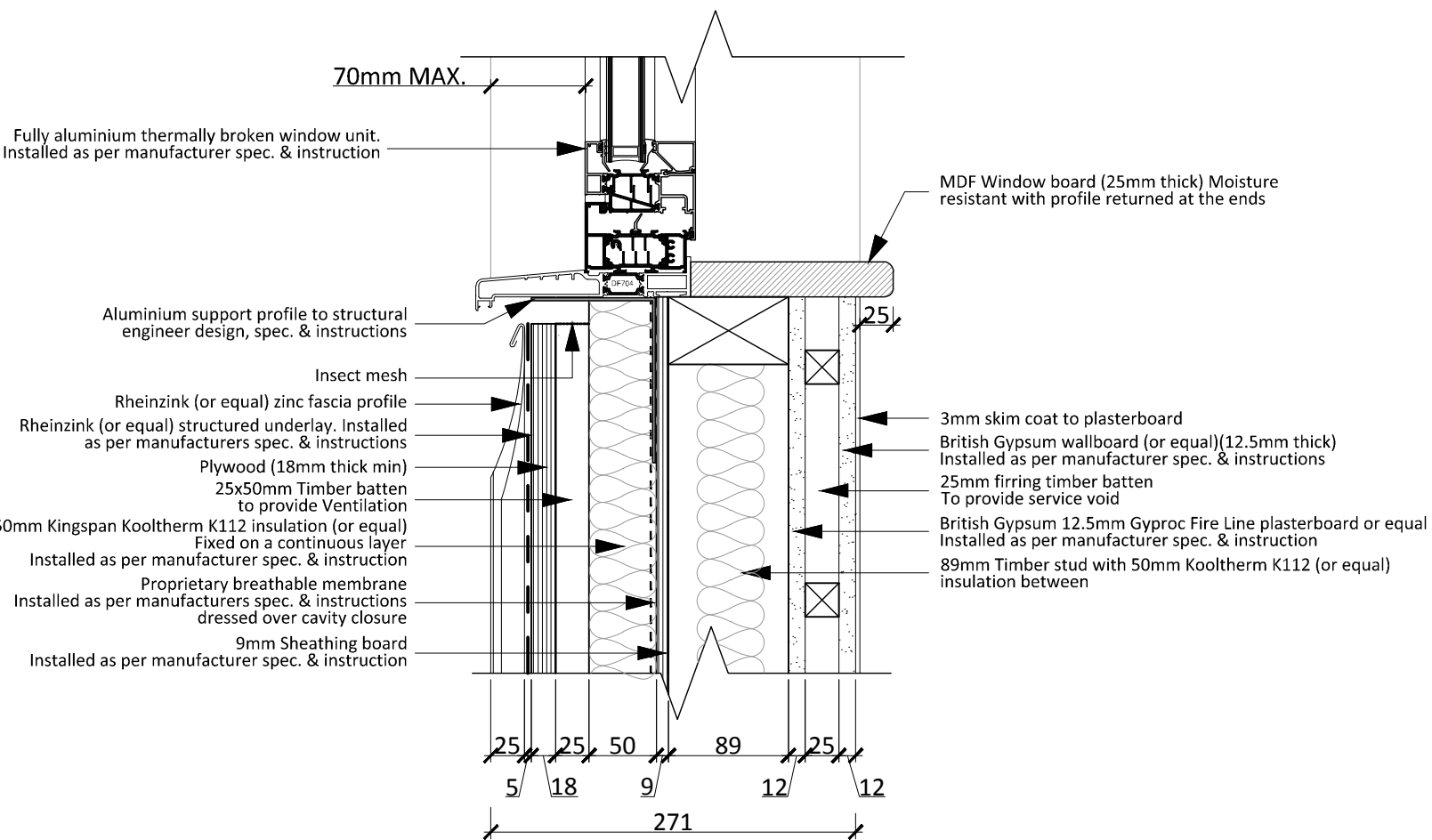
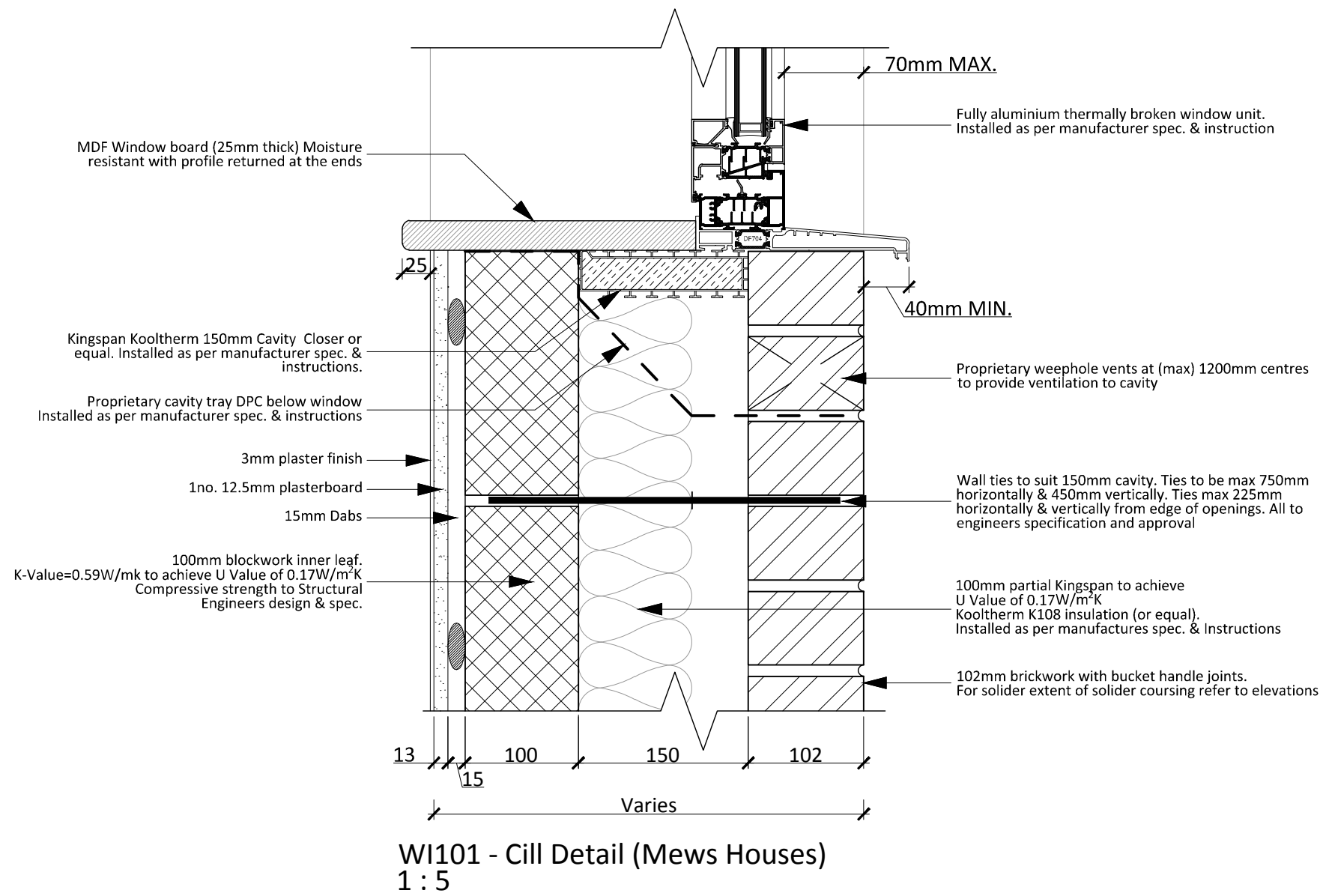
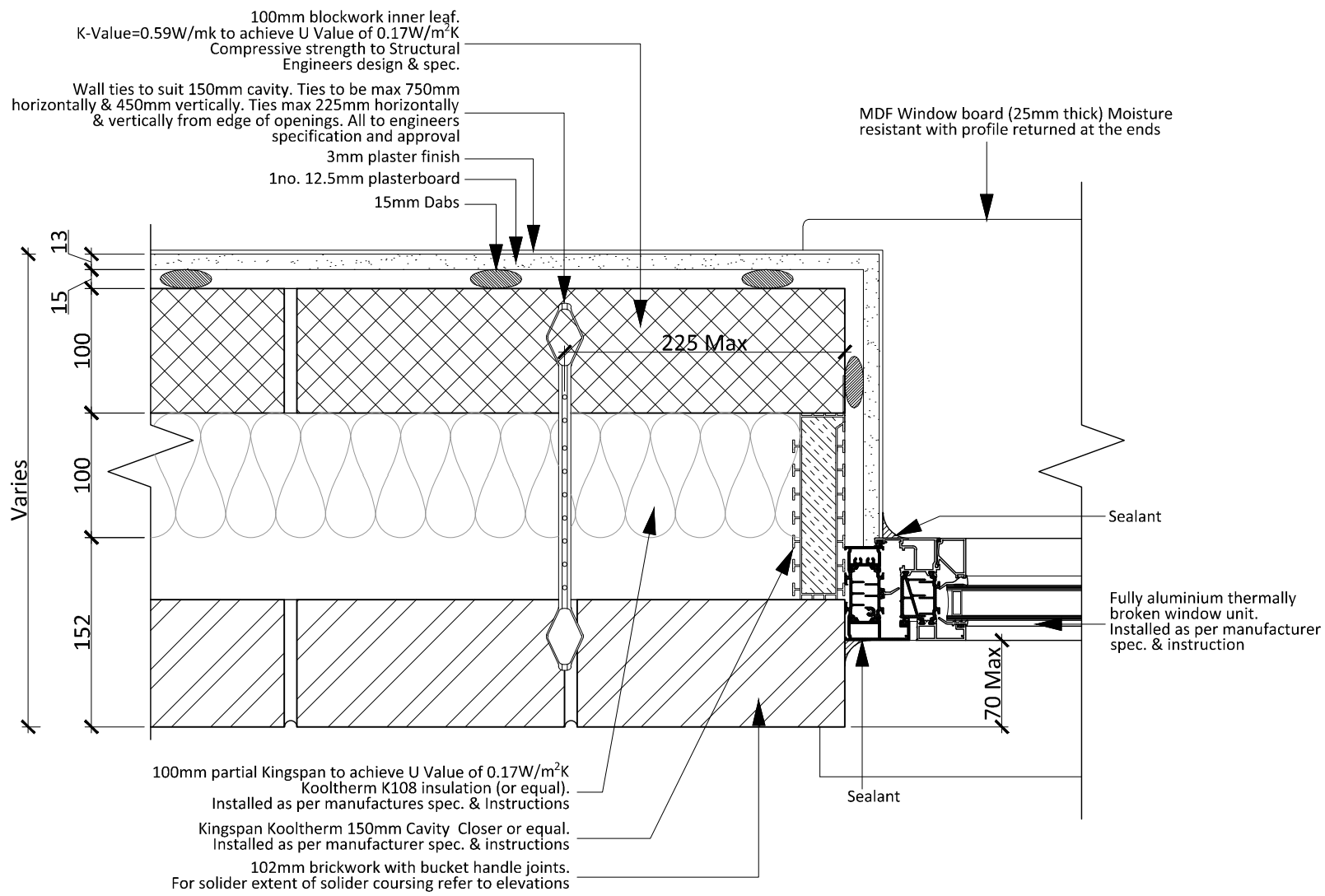
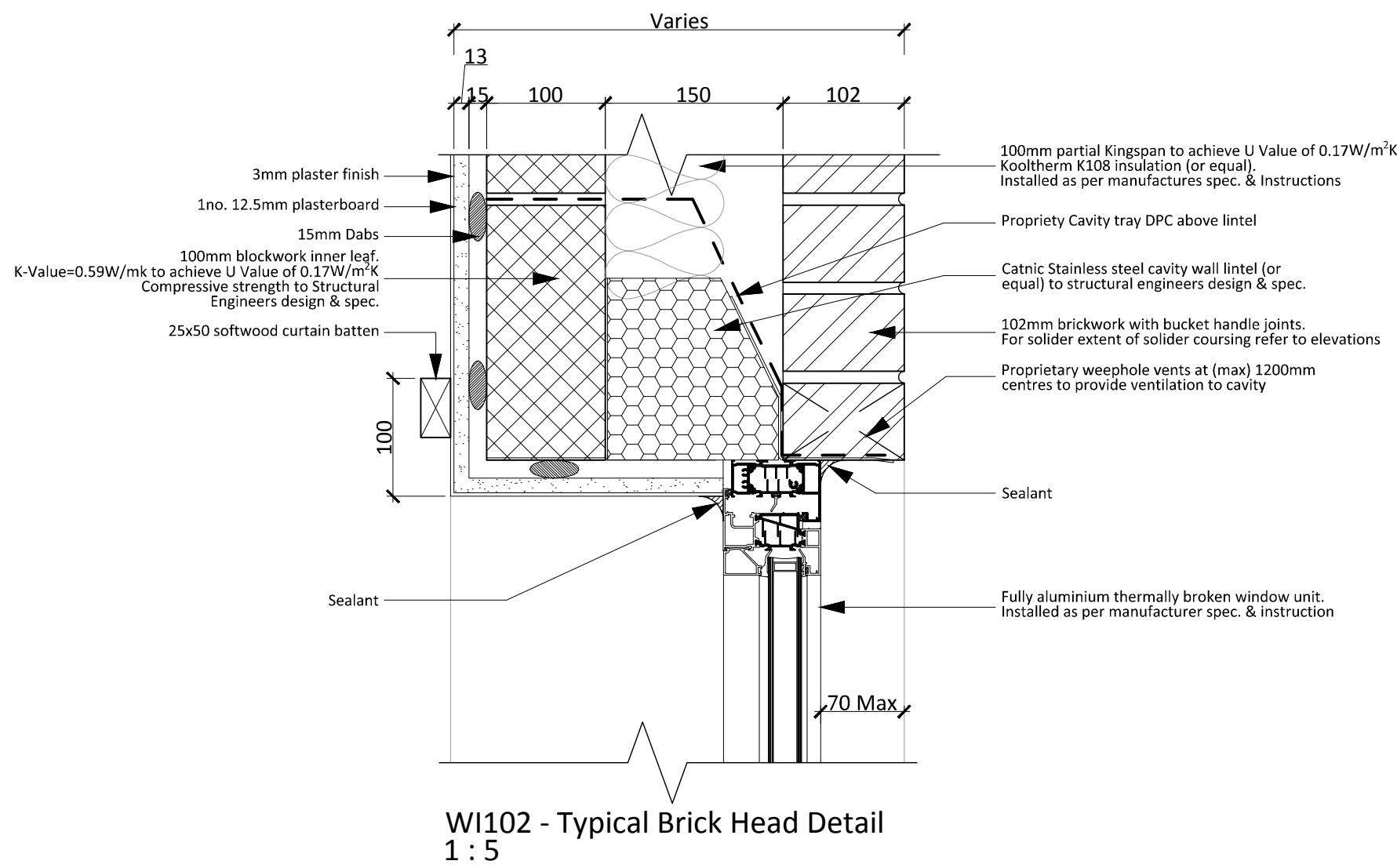


NOTE:
THIS DRAWING HAS BEEN PRODUCED BY ELECTRONIC MEANS. SHOULD THE SCALE MEASUREMENTS BE TAKEN BY MEANS OTHER THAN ELECTRONIC (e.g. FROM A PRINTED COPY), THE FOLLOWING MUST BE TAKEN INTO CONSIDERATION BEFORE SCALING IS UNDERTAKEN:
1. ENSURE THAT THE COPY HAS BEEN PRINTED/PLOTTED ON THE STATED SHEET SIZE WITH THE PLOTTING SCALE SET TO A CORRECT RATIO.
2. ENSURE THAT AN ADEQUATE ALLOWANCE (DEPENDANT ON THE STATED SCALE) IS MADE FOR THE INEVITABLE DISTORTIONS INTRODUCED BY PLOTTING/PRINTING AND COPYING PROCESSES.
3. MARKED CRITICAL DIMENSIONS ARE TO BE REGARDED AS HAVING PRECEDENCE OVER THE SCALED VALUES.



B	DRAWING UPDATED AS FOLLOWS: detail 104 added	21.05.18	MA	BPH
A	DRAWING UPDATED AS FOLLOWS: Drawing revised to suit comments	05.04.18	MA	BPH
REV	DESCRIPTION	DATE	INIT	CHKD

Client
Rydon
Project
Ashton Court, Camden Park Road, Camden
Title
Window Details
Scale
1:5@A1
Date
21.12.17
Drawn By
MA
Checked By
BH
Project No:
K160423
Drawing No:
A (2)515
Revision
B

St Johns House 1A Knoll Rise Orpington Kent BR6 0JX
01689 888222 orpington@calfordseaden.com
calfordseaden LLP is a Limited Liability Partnership Registered in England & Wales number OC315838
ORPINGTON | LONDON | BIRMINGHAM | CAMBRIDGE | SOUTHEAST-ON-SEA | WINCHESTER
calfordseaden.com