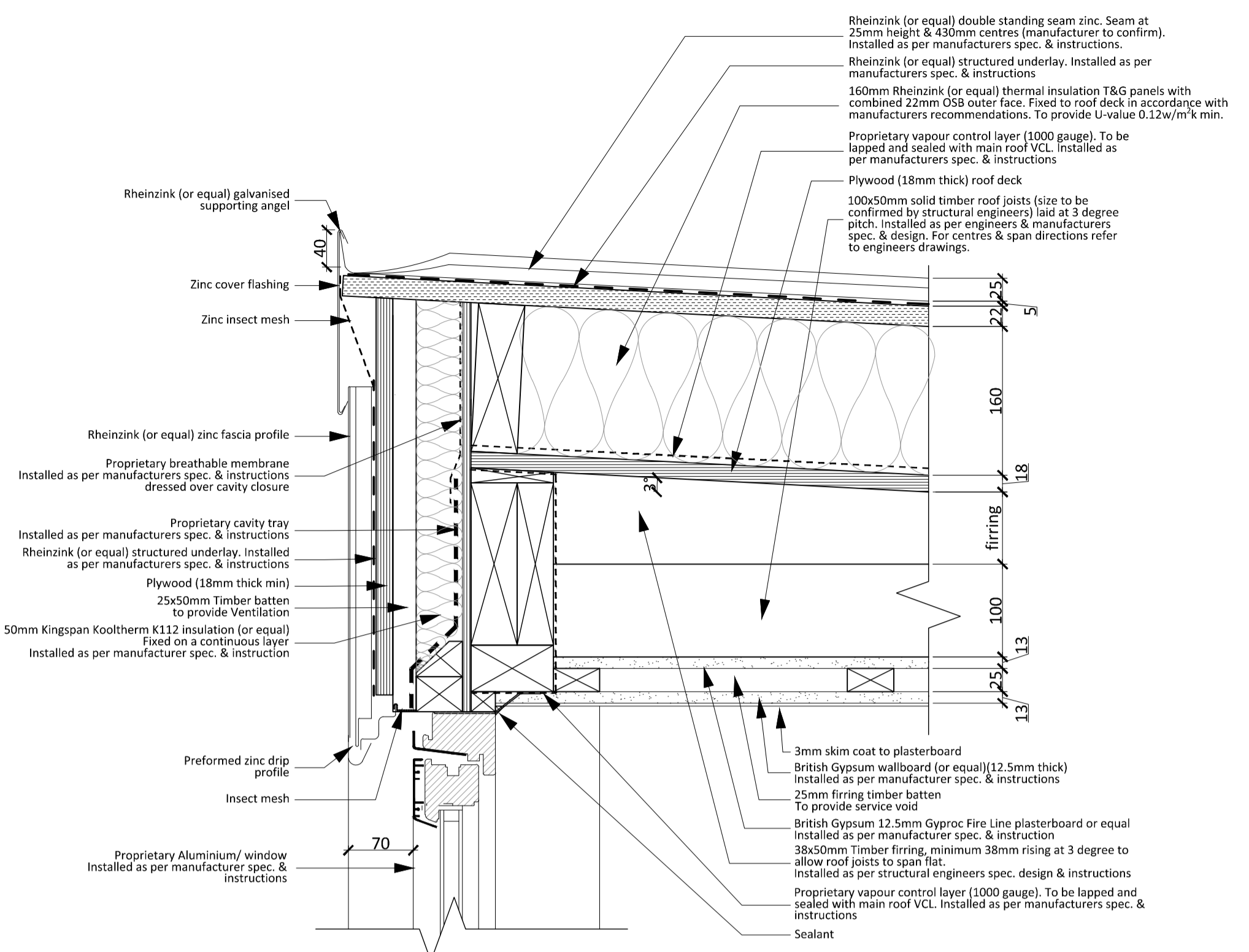
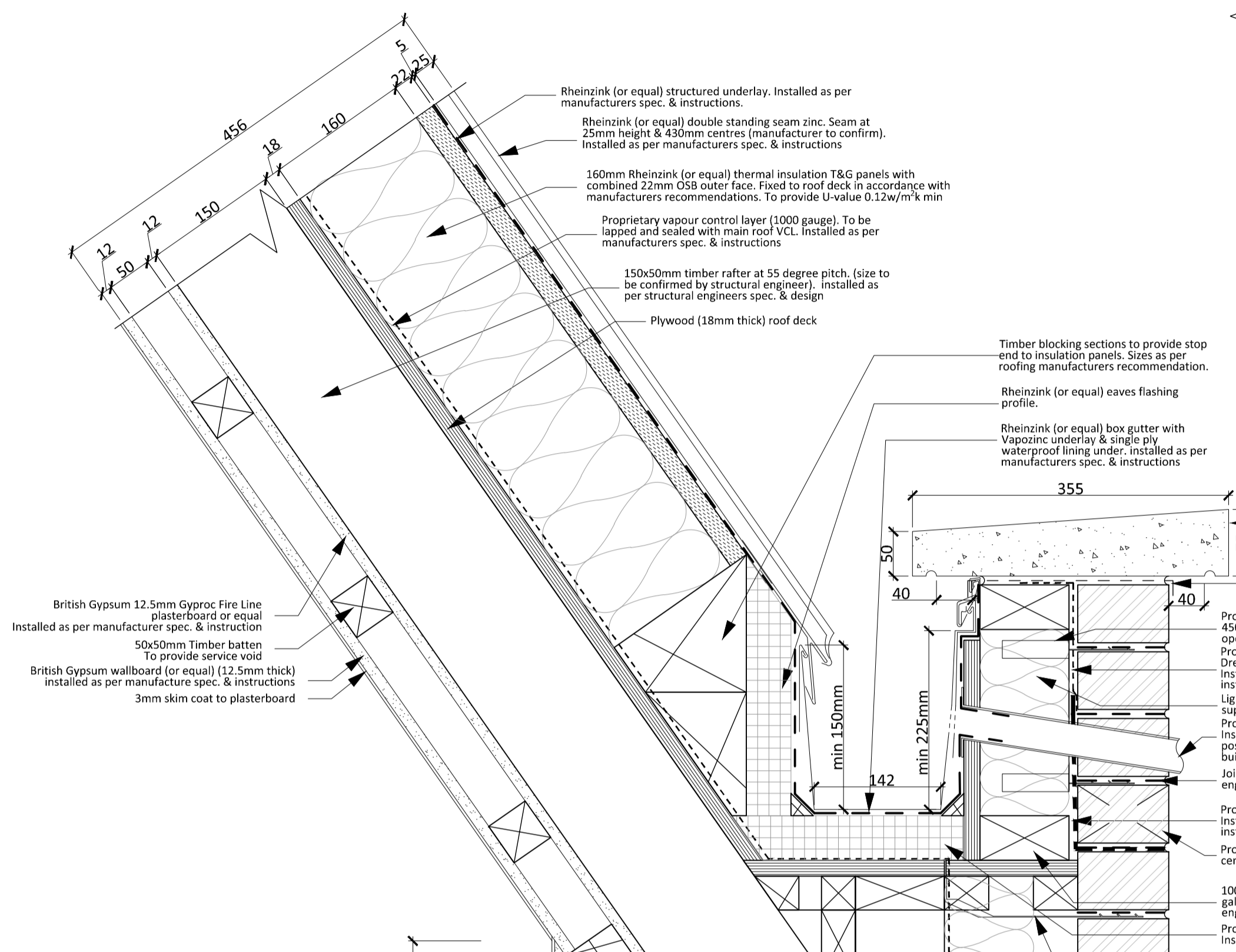


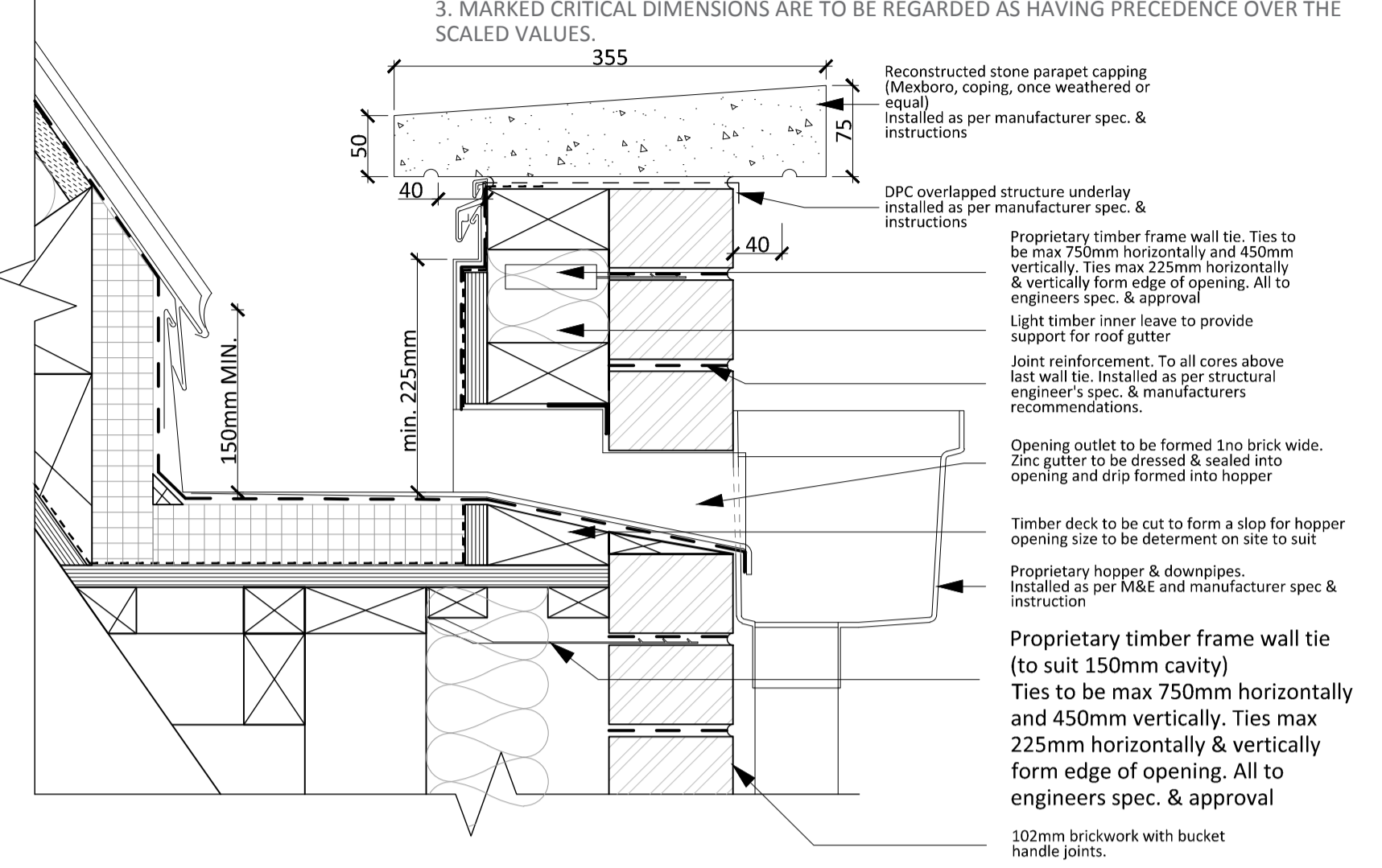
NOTE:
THIS DRAWING HAS BEEN PRODUCED BY ELECTRONIC MEANS. SHOULD THE SCALE MEASUREMENTS BE TAKEN BY MEANS OTHER THAN ELECTRONIC (E.G. FROM A PRINTED COPY), THE FOLLOWING MUST BE TAKEN INTO CONSIDERATION BEFORE SCALING IS UNDERTAKEN:
1. ENSURE THAT THE COPY HAS BEEN PRINTED/PLOTTED ON THE STATED SHEET SIZE WITH THE PLOTTING SCALE SET TO A CORRECT RATIO.
2. ENSURE THAT AN ADEQUATE ALLOWANCE (DEPENDANT ON THE STATED SCALE) IS MADE FOR THE INEVITABLE DISTORTIONS INTRODUCED BY PLOTTING/PRINTING AND COPYING PROCESSES.
3. MARKED CRITICAL DIMENSIONS ARE TO BE REGARDED AS HAVING PRECEDENCE OVER THE SCALED VALUES.



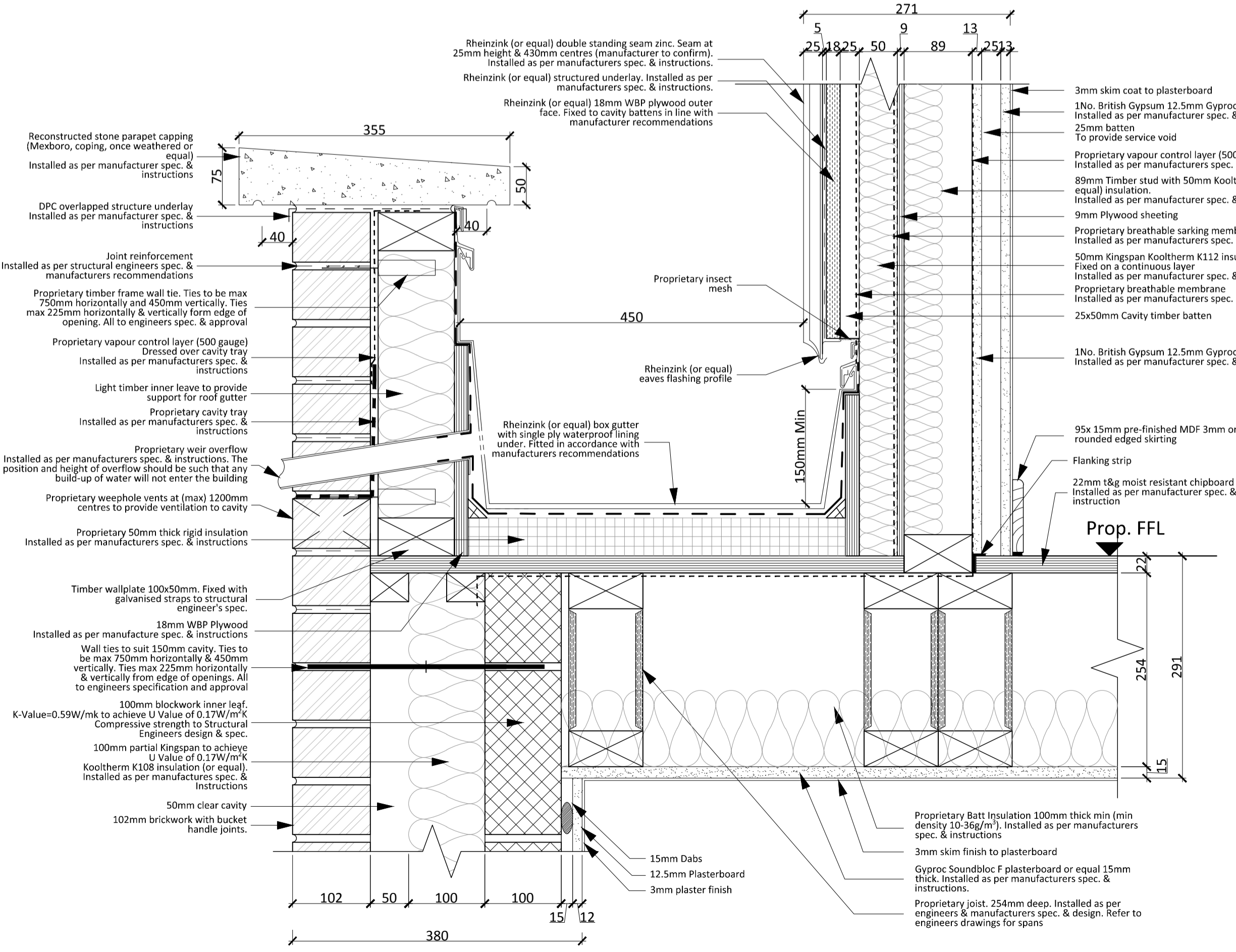
RF106 - Zinc Dormer Roof Eaves to Ext. Dormer Wall 1:5



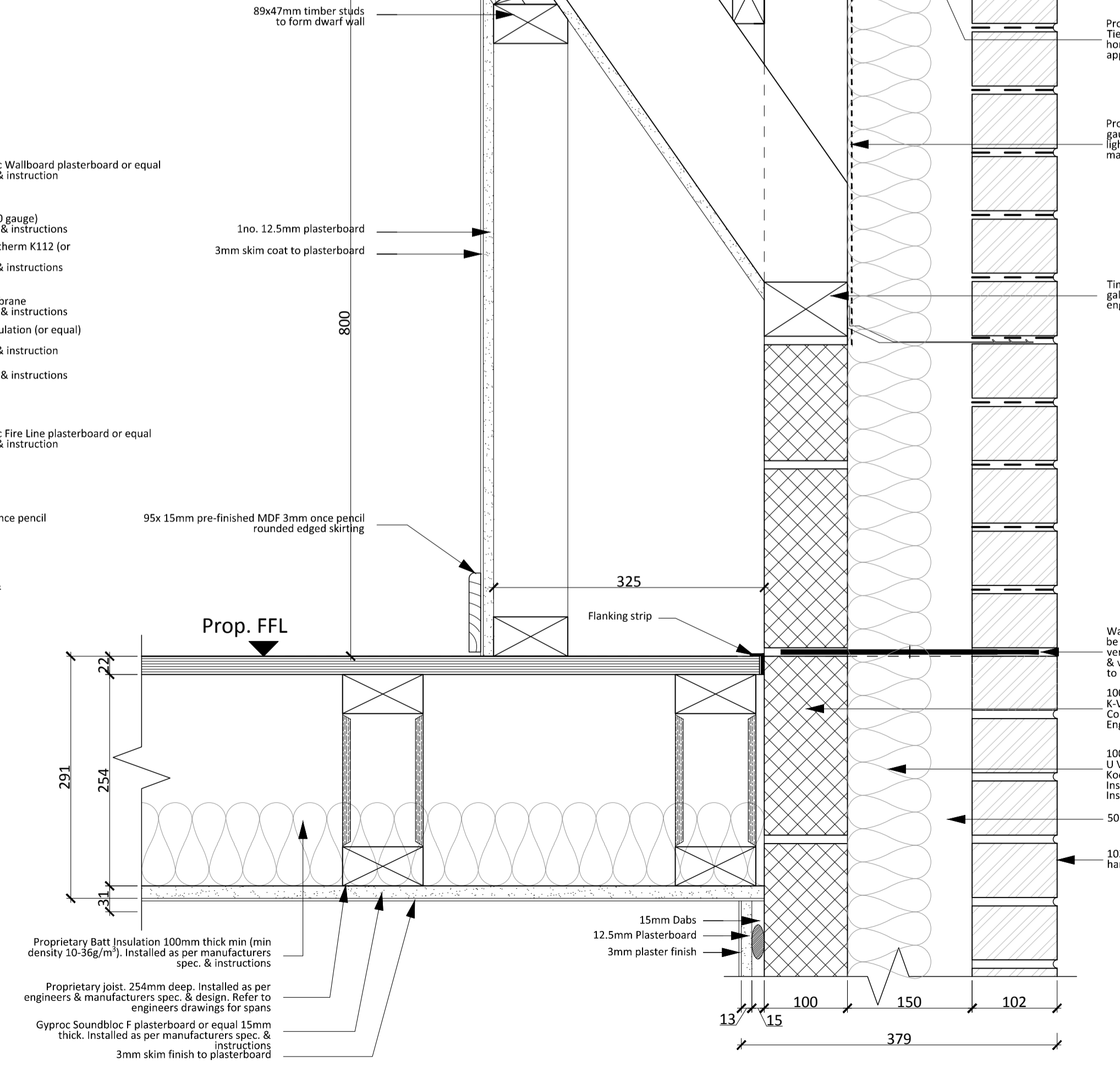
RF100 - Mansard Parapet Gutter 1:5



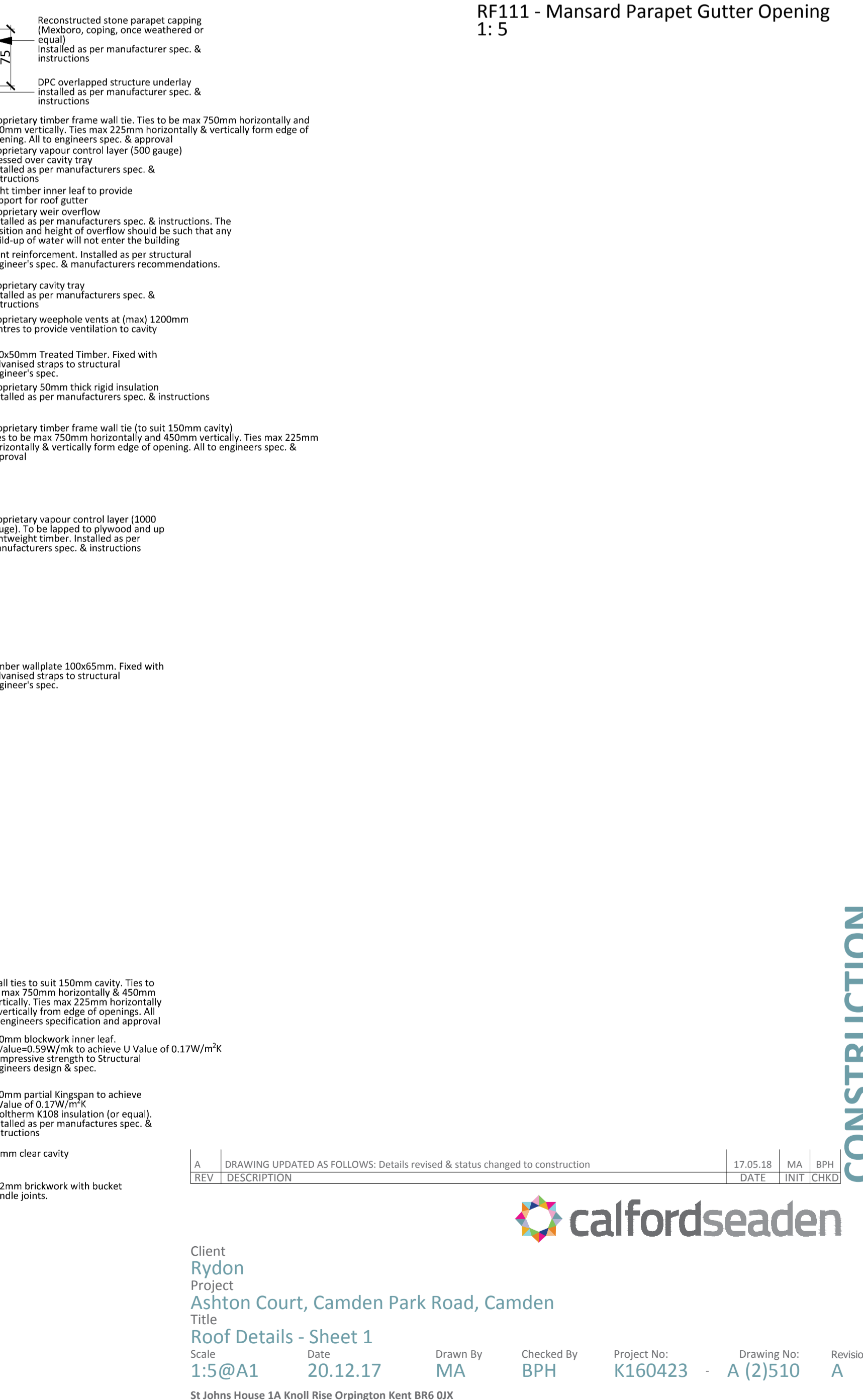
RF111 - Mansard Parapet Gutter Opening 1:5



RF108 - Zinc Mansard Flat Roof Junction 1:5



RF109 - Mansard Parapet Gutter 1:5



RF110 - Mansard Parapet Gutter 1:5

CONSTRUCTION

A	DRAWING UPDATED AS FOLLOWS: Details revised & status changed to construction	17.05.18	MA	BPH
REV	DESCRIPTION	DATE	INIT	CHKD



Client
Rydon
Project
Ashton Court, Camden Park Road, Camden
Title
Roof Details - Sheet 1
Scale
1:5@A1
Date
20.12.17
Drawn By
MA
Checked By
BPH
Project No:
K160423
Drawing No:
A (2)510
Revision
A

St Johns House 1A Knoll Rise Orpington Kent BR6 0JX
01689 888222 orpington@calfordseaden.com
calfordseaden LLP is a Limited Liability Partnership Registered in England & Wales number OC115838
ORPINGTON | LONDON | BIRMINGHAM | CAMBRIDGE | SOUTHEAST-ON-SEA | WINCHESTER
calfordseaden.com