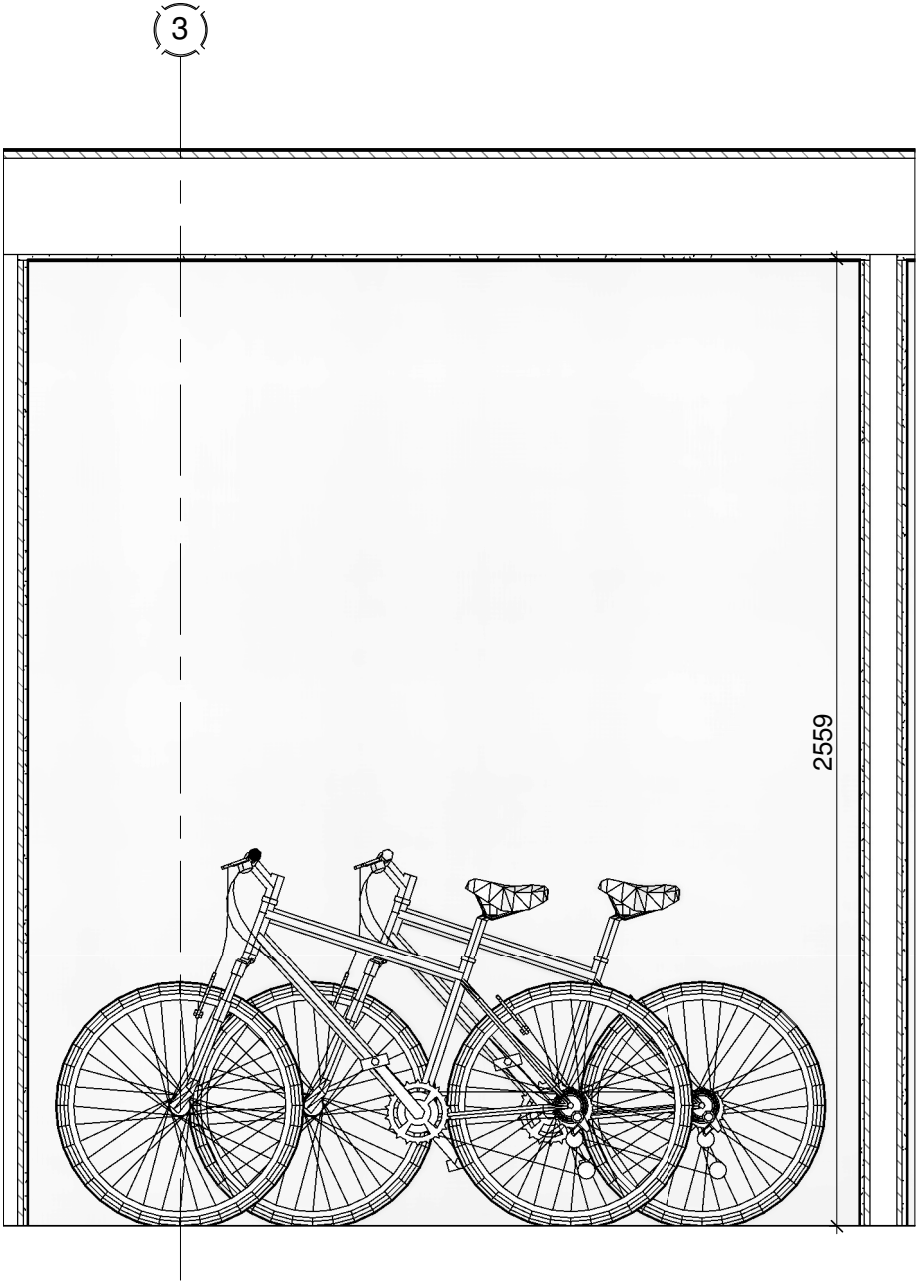
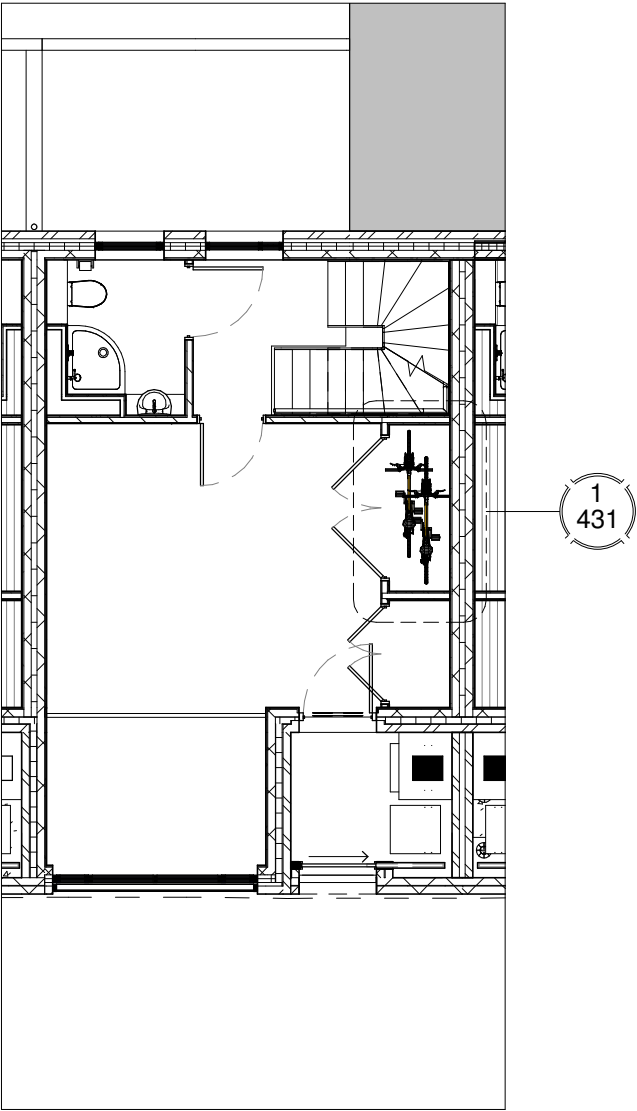


Typical Cycle Store Plan
1 : 20



Typical Cycle Store Elevation
1 : 20



Ground Layout Key
1 : 100



Client
Rydon Construction Ltd
Project
Ashton Court, Camden Park Road, Camden
Title
Typical Mews House's Cycle Store

Scale As indicated	Date 27.02.18	Drawn By MA	Checked By BPH	Project No: K160423	Drawing No: A(2)431	Revision
------------------------------	-------------------------	-----------------------	--------------------------	-------------------------------	-------------------------------	----------

St John's House, 1A Knoll Rise, Orpington, Kent BR6 0JX
01689 888222 orpington@calfordseaden.co.uk
calfordseaden LLP is a Limited Liability Partnership Registered in England & Wales number OC315838

ORPINGTON ■ LONDON ■ BIRMINGHAM ■ SOUTHEAST ■ WINCHESTER ■ CAMBRIDGE

calfordseaden.com

REV	DESCRIPTION	DATE	INIT	CHKD
-----	-------------	------	------	------