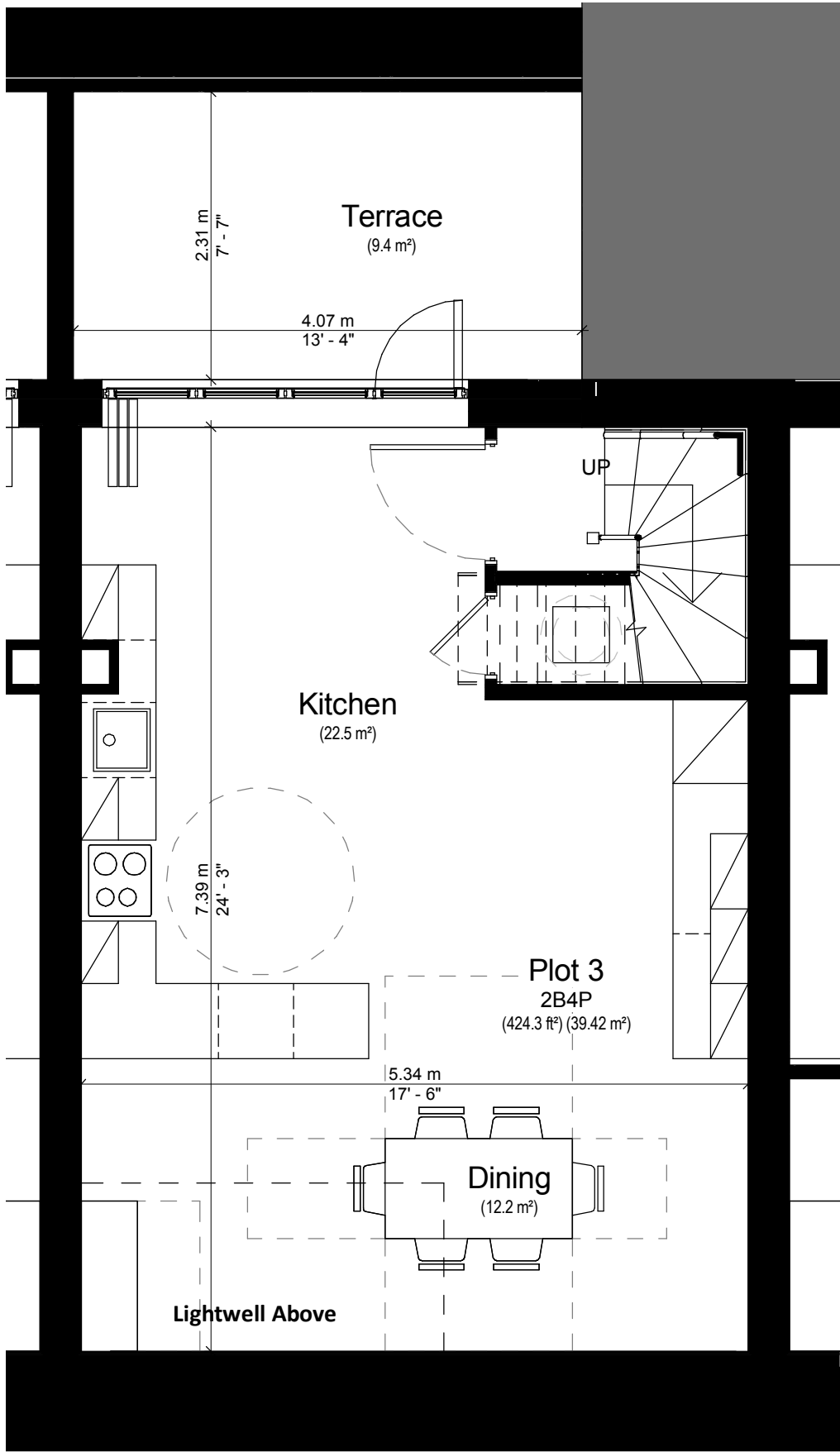
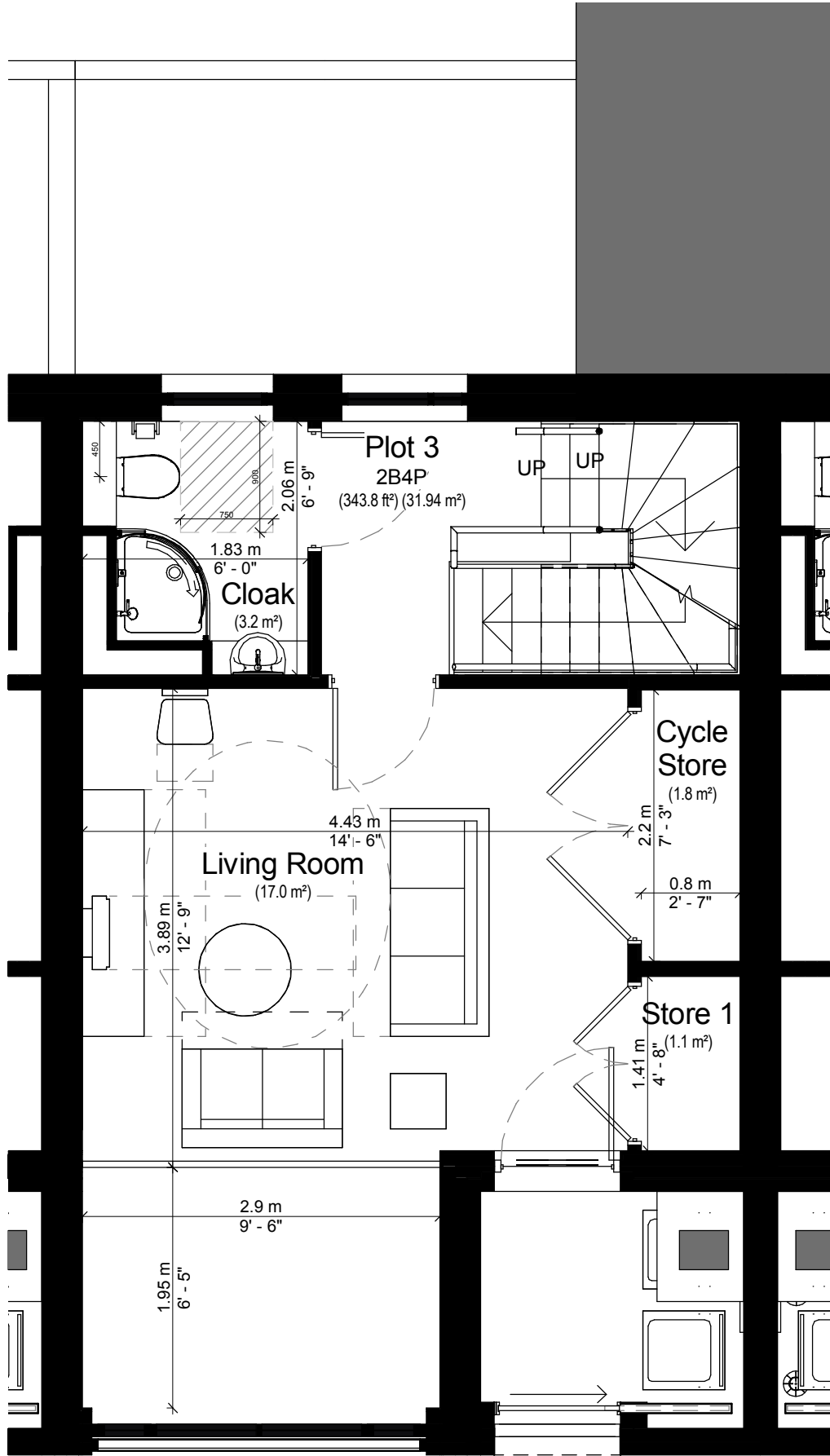


NOTE:  
THIS DRAWING HAS BEEN PRODUCED BY ELECTRONIC MEANS. SHOULD THE SCALE MEASUREMENTS BE TAKEN BY MEANS OTHER THAN ELECTRONIC (e.g. FROM A PRINTED COPY), THE FOLLOWING MUST BE TAKEN INTO CONSIDERATION BEFORE SCALING IS UNDERTAKEN:  
1. ENSURE THAT THE COPY HAS BEEN PRINTED/PLOTTED ON THE STATED SHEET SIZE WITH THE PLOTTING/PRINTING SCALE SET TO A CORRECT RATIO.  
2. ENSURE THAT AN ADEQUATE ALLOWANCE (DEPENDANT ON THE STATED SCALE) IS MADE FOR THE INEVITABLE DISTORTIONS INTRODUCED BY PLOTTING/PRINTING AND COPYING PROCESSES.  
3. MARKED CRITICAL DIMENSIONS ARE TO BE REGARDED AS HAVING PRECEDENCE OVER THE SCALED VALUES.

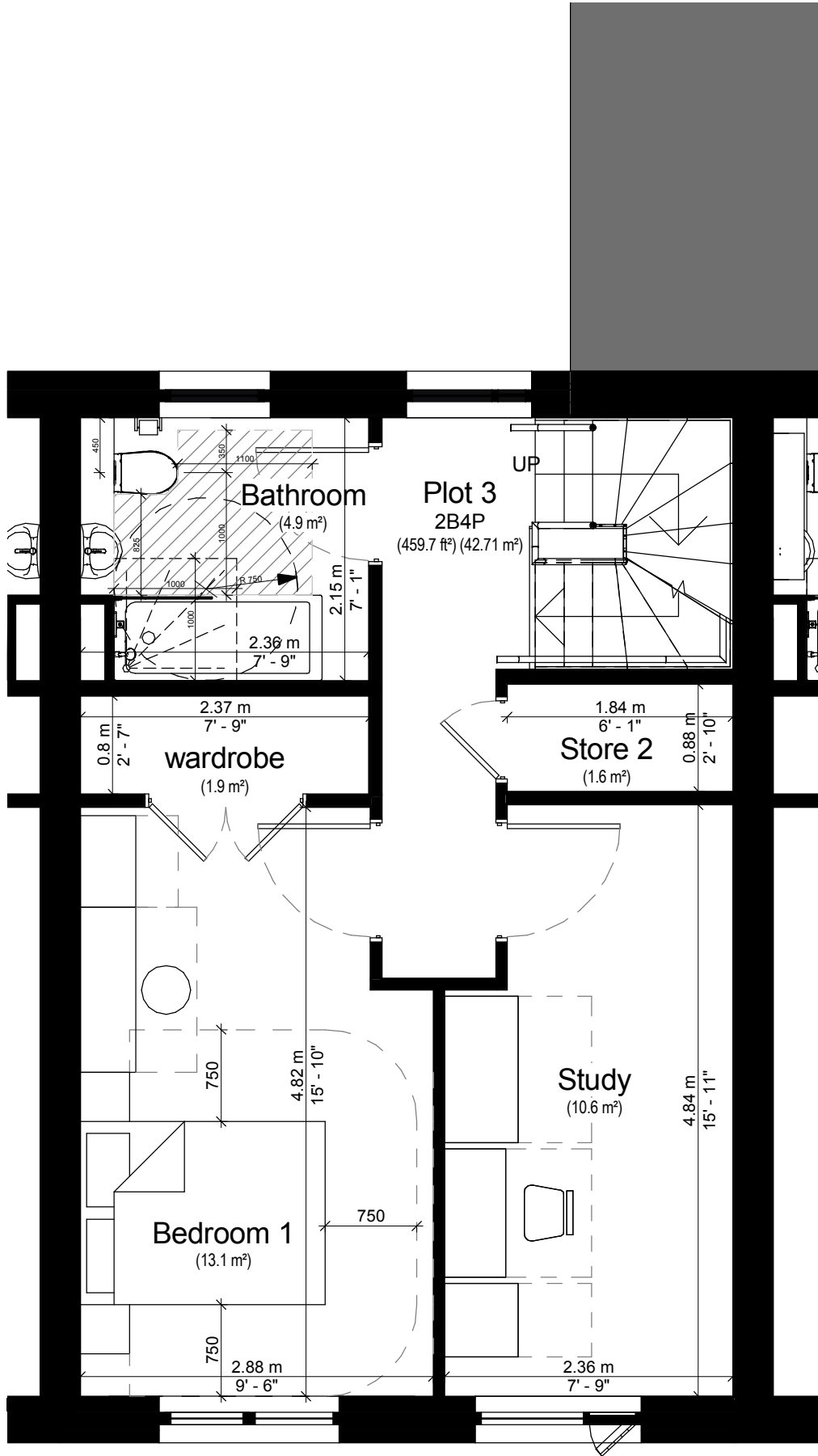
Area Schedule (GIA) Plot 3	
Floor	Area
-1	
Basement	39.42 m²
0	
Ground	31.94 m²
1	
First	42.71 m²
2	
Second	34.76 m²
	148.83 m²



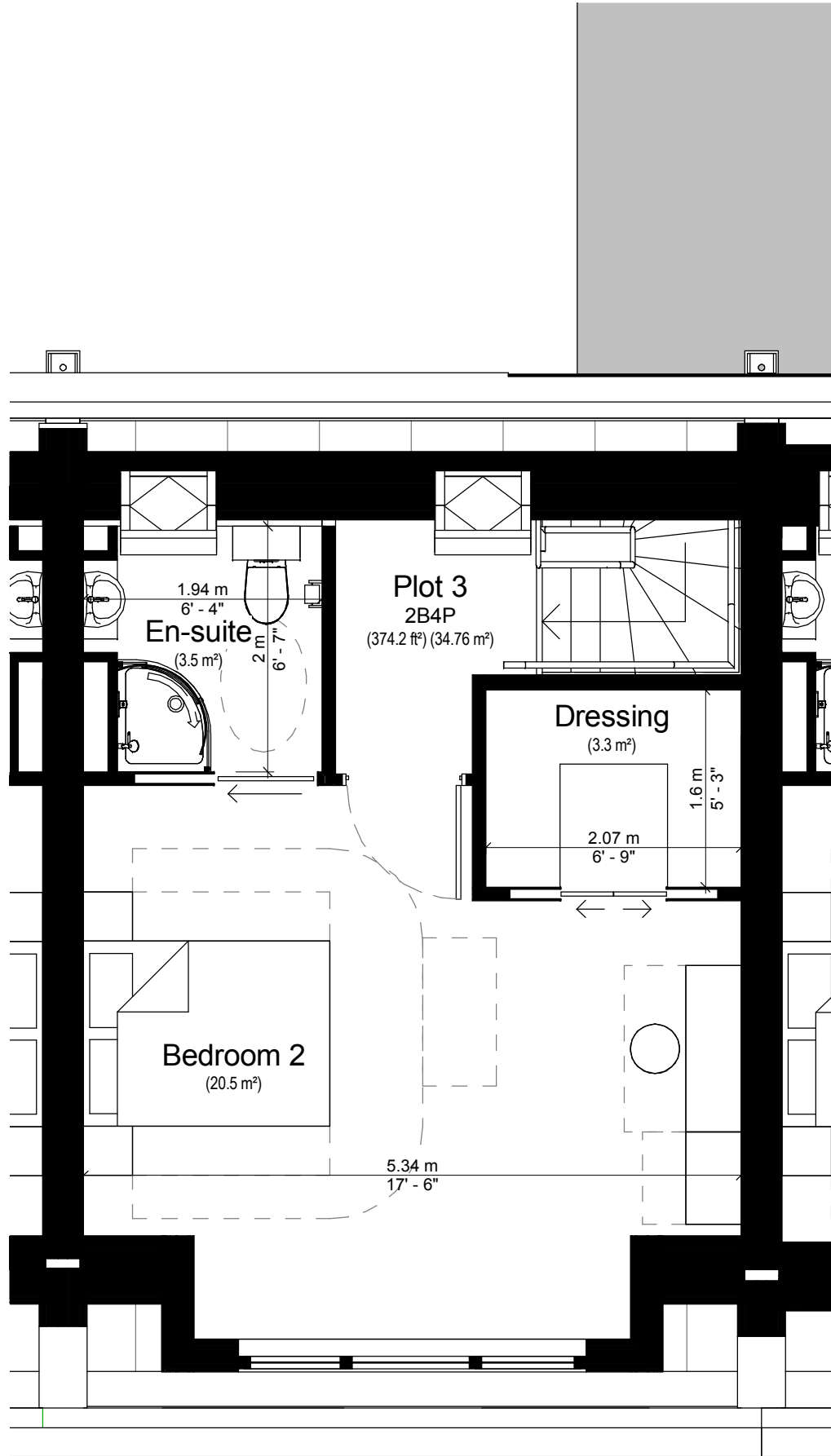
BASEMENT FLOOR  
1 : 50



GROUND FLOOR  
1 : 50



FIRST FLOOR  
1 : 50



SECOND FLOOR  
1 : 50

5	DRAWING UPDATED AS FOLLOWS: Bedroom and WC/Bathroom dimensions added to demonstrate Part M4(2) compliance	29.03.18	MA	BPH
4	DRAWING UPDATED AS FOLLOWS: Scheme generally revised in accordance with discussions from meeting held 25.04.17 with the planning officers.	12.05.17	PMC	CJA
3	DRAWING UPDATED AS FOLLOWS: Scheme generally revised in accordance with discussions from meeting held 23.02.17 with the planning officers.	06.03.17	PMC	CMR
2	DRAWING UPDATED AS FOLLOWS: Status updated to Planning	09.01.17	MA	PMC
1	DRAWING UPDATED AS FOLLOWS: Bedroom 2 revised to study, Bedroom 1 revised to twin room. All to client comments.	21.12.16	PMC	CMR
REV	DESCRIPTION	DATE	INIT	CHKD

PLANNING



Client  
**Rydon Construction Ltd**  
Project  
**Ashton Court, Camden Park Road, Camden**  
Title  
**House Type 2B (Plot 3)**  
Scale  
**1 : 50**  
Date  
**22.11.16**  
Drawn By  
**BPH**  
Checked By  
**CMR**  
Project No:  
**K160423**  
Drawing No:  
**A(2)403**  
Revision  
**5**

St John's House 1a Knoll RiseOrpington Kent BR6 0JX  
01689 888222 orpington@calfordseaden.co.uk  
calfordseaden LLP is a Limited Liability Partnership Registered in England & Wales number OC315838

ORPINGTON ■ LONDON ■ BIRMINGHAM ■ SOUTHEND ■ WINCHESTER

calfordseaden.co.uk