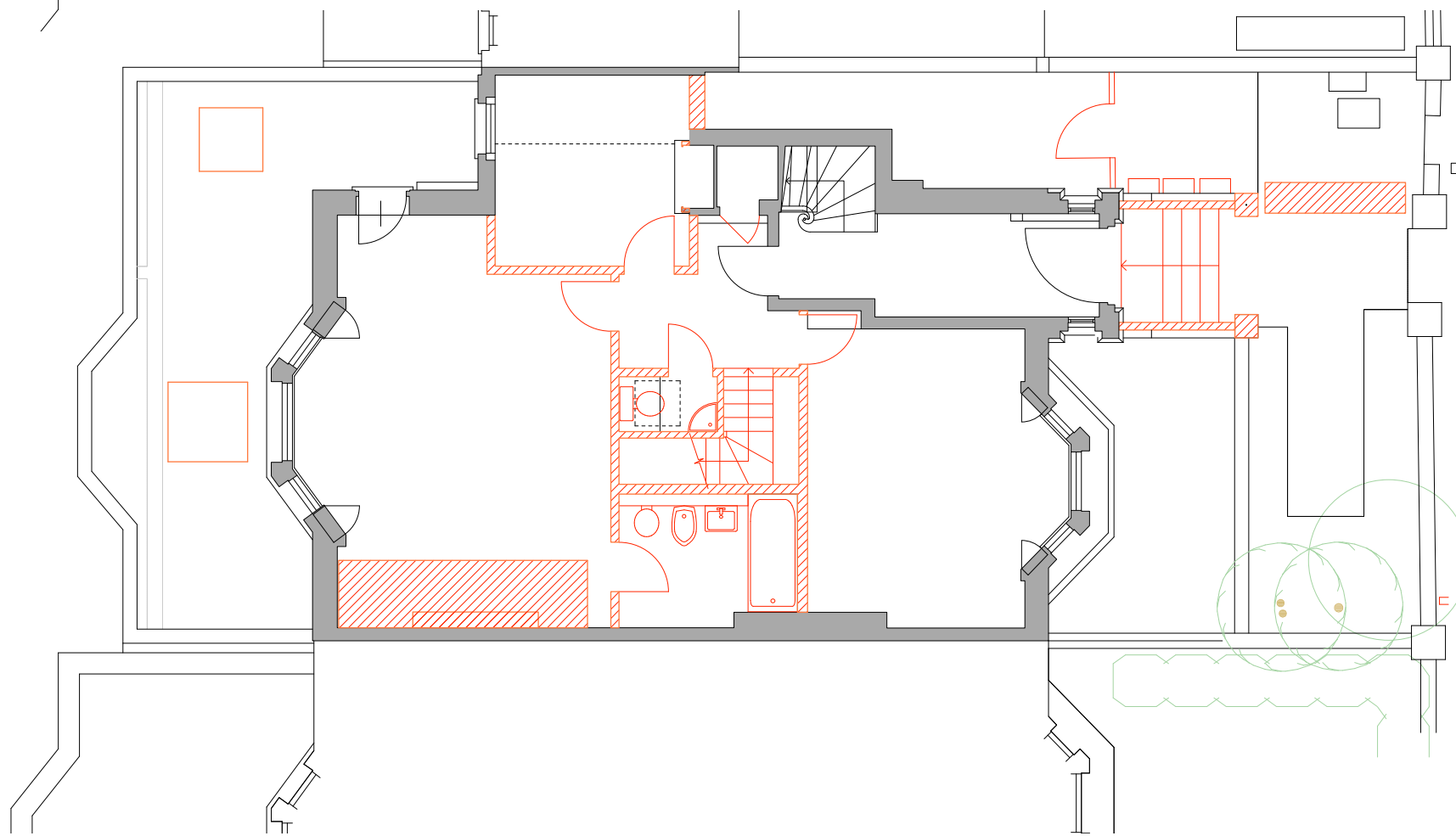
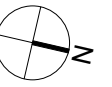


1 DEMOLITION PLAN LOWER GROUND FLOOR  
1:100 @ A3



2 DEMOLITION PLAN RAISED GROUND FLOOR  
1:100 @ A3



 Demolition

P1 22.05.18 Issued for Planning  
P01 20.03.18 Issued for Pre-Planning  
rev date note  
do not scale drawing copyright © architects ltd

**PLANNING**

**tfa** ARCHITECTS  
250 Kennington Lane  
London SE11 5RD  
t: 020 7091 9800  
f: 020 7091 9830  
office@tfa.co.uk  
www.tfa.co.uk

project  
121 KING HENRY'S ROAD  
LONDON NW3 3RB

drawing  
DEMOLITION PLANS:  
LOWER GROUND AND  
RAISED GROUND FLOOR

date 16.02.18	dep no 230 040
scale 1:100 @ A3	rev P1