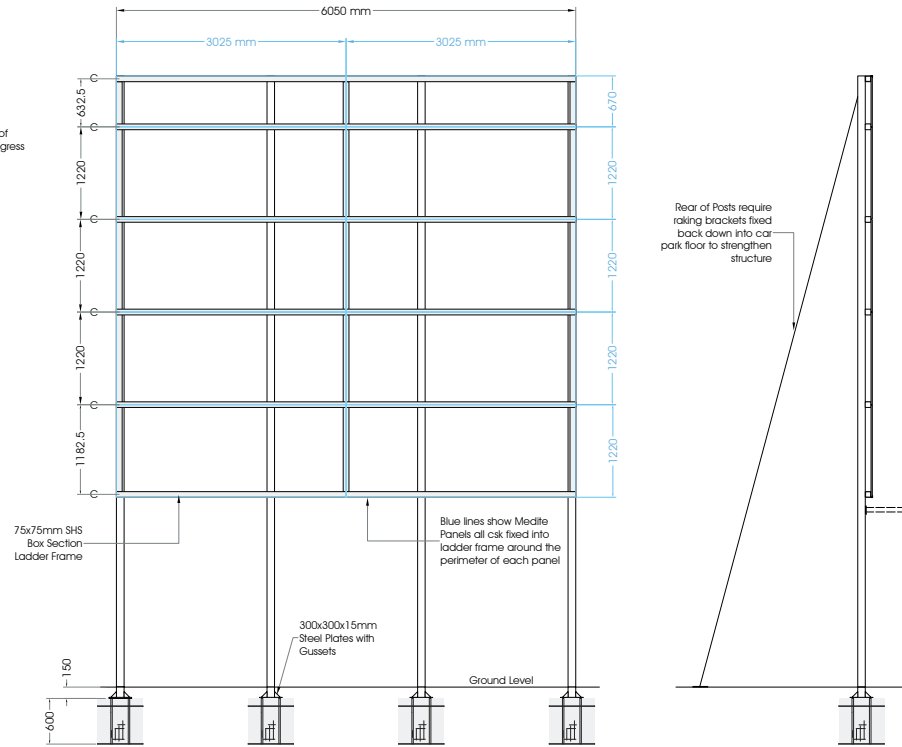




Visual with Banner Shown



Steelwork Details

Section View

Sign No. Hoarding Sign

Details Description: 1no of single sided hoarding sign complete with face fixed PVC banner

Sizes 6050 x 5550mm
Banner Size: 6000 x 5500mm
Trim: 25x25mm aluminium Trim fixed all round perimeter.

Backtray Backing: 18mm Exterior Grade Medite Panels Csk fixed to Ladder Frame

Finish All steel work & Medite panels to be finished in White.

Illumination: Externally illuminated via a full length LED Canopy fitted to bottom edge of sign to provide uplighting.

Fixing Details Sign constructed from:
4no 100x100mm Box Section Posts with 300x300x15mm gusseted fixing plates with ground cages.

Posts require brackets to rear to tie sign back to car park floor and strengthen structure.

Posts to have 75x75mm box section frame bolted to the face (fixings must not protrude on face).

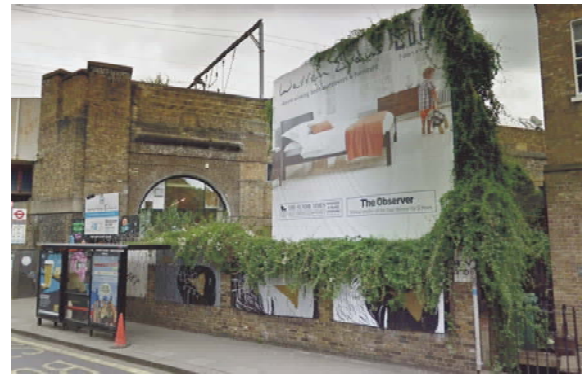
18mm Medite panels to be Csk fixed to face of ladder frame all round perimeter of each panel.

1no Aluminium trim to be fitted to perimeter of sign to prevent water damage on edge of Medite panels.

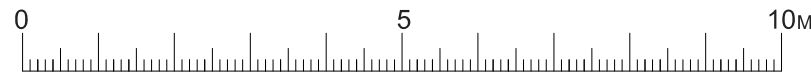
Sign complete with face fixed PVC banner with eyelets all round. Design as per 74368.



Photo Impression



Existing Hoarding to be Replaced



This Drawing & information contained may not be copied or used without prior consent from Spencer Signs. Colour shown may not accurately match any colour references. Sizes in mm unless stated otherwise.

SPENCER SIGNS <small>Unit 1, 70 Scarborough St, Hull, HU3 4TG Tel: 01482 232221 www.spencersigns.co.uk email: design@spencersigns.co.uk</small>	DRG. NO. 74492-A	Date 18/04/18	Checked 	Rev.	Date	Initial	Revision Detail
	Drawn By CW	Scale 1:100@A4	Drawing Status Production	A	11/05/2018	CW	Tough Light Added

Specification checked and approved for Production By (sign & print name)

Typeface(s)/Colours (use actual type)

C M Y K

General Notes: