

**29 NEW END
NW3 1JD**

**MINOR MATERIAL AMENDMENT APPLICATION
ISSUED IN AUGUST 2017- REF: 2017/6306/P
CAMDEN REQUESTED INFORMATION 29/03/2018**

KSR ARCHITECTS LLP
14 Greenland Street
London NW1 0ND
t: +44 (0)20 7692 5000
mail@ksrarchitects.com
www.ksrarchitects.com

PROPOSED VERIFIED VIEWS

1. PERSPECTIVE VIEW FROM THE HIGHER SIDE OF NEW END
2. PERSPECTIVE VIEW FROM THE LOWER SIDE OF NEW END
3. PERSPECTIVE VIEW FROM HAMPSTEAD SQUARE
4. PERSPECTIVE VIEW FROM CHRISTCHURCH PASSAGE

This submission relates to a development proposal at 29 New End which received planning permission on **2nd February 2015** follow a **Planning Appeal. REF. NO: 14/04393/FULL.**

Each sheet shows the verified views from the planning permission and the proposed design.

CLIENT

THE LINTON GROUP

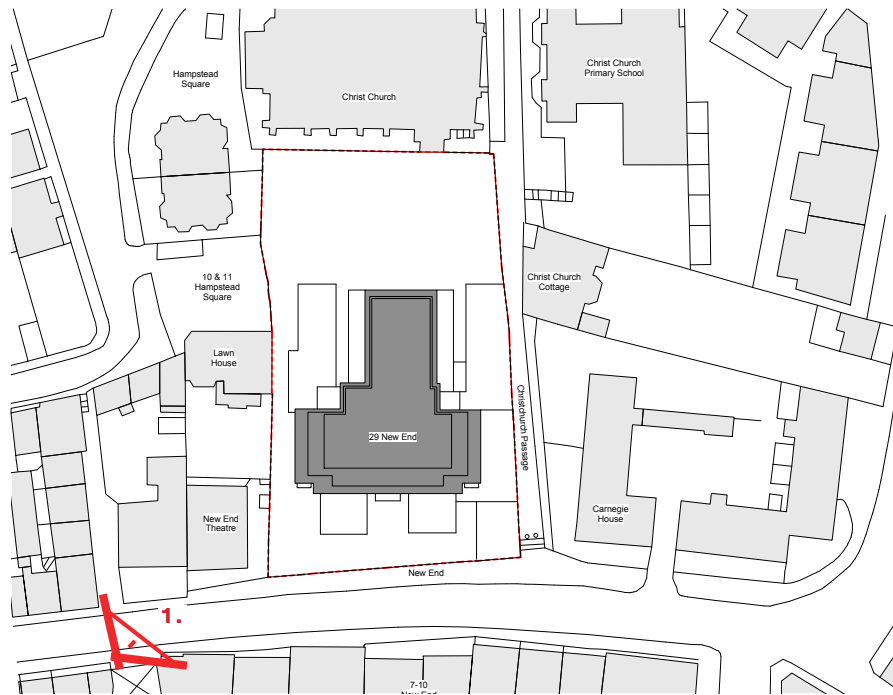
DESIGN TEAM

ARCHITECT
KSR Architects

PLANNING CONSULTANT
SAVILLS

STRUCTURAL ENGINEER
ROSS & PARTNERS

MEP ENGINEER
HOARE LEA

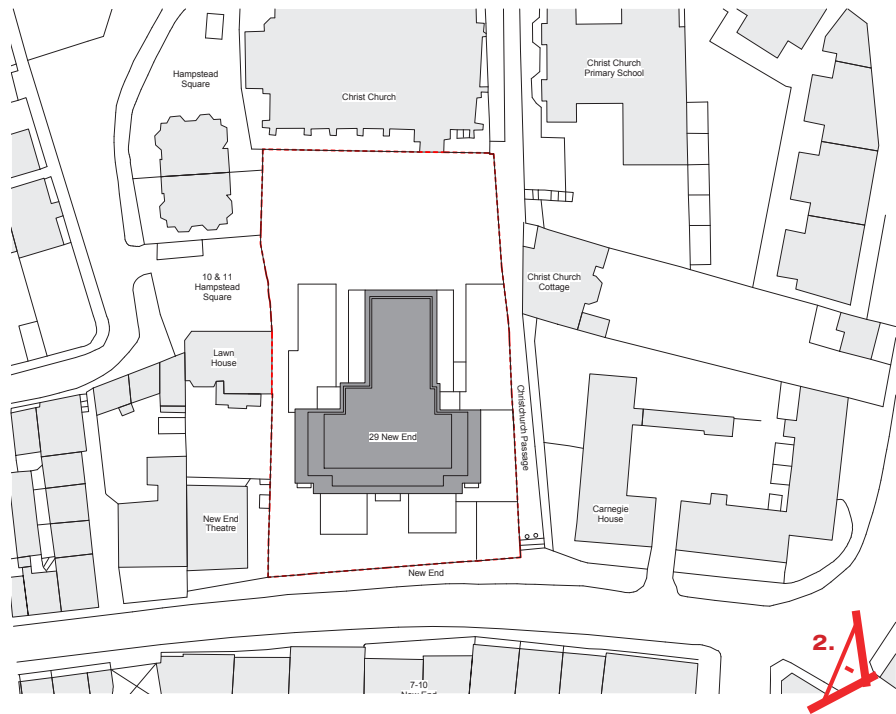


VERIFIED PLANNING PERMITTED PERSPECTIVE VIEW

1. PERSPECTIVE VIEW FROM THE HIGHER SIDE OF NEW END

29 NEW END

MINOR MATERIAL AMENDMENT APPLICATION

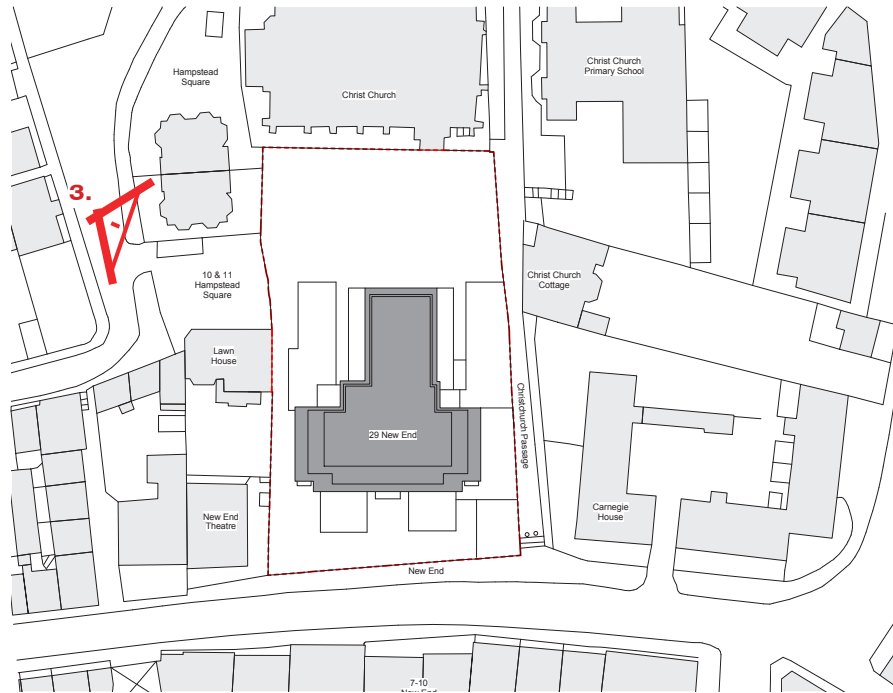


VERIFIED PLANNING PERMITTED PERSPECTIVE VIEW

2. PERSPECTIVE VIEW FROM THE LOWER SIDE OF NEW END

29 NEW END

MINOR MATERIAL AMENDMENT APPLICATION

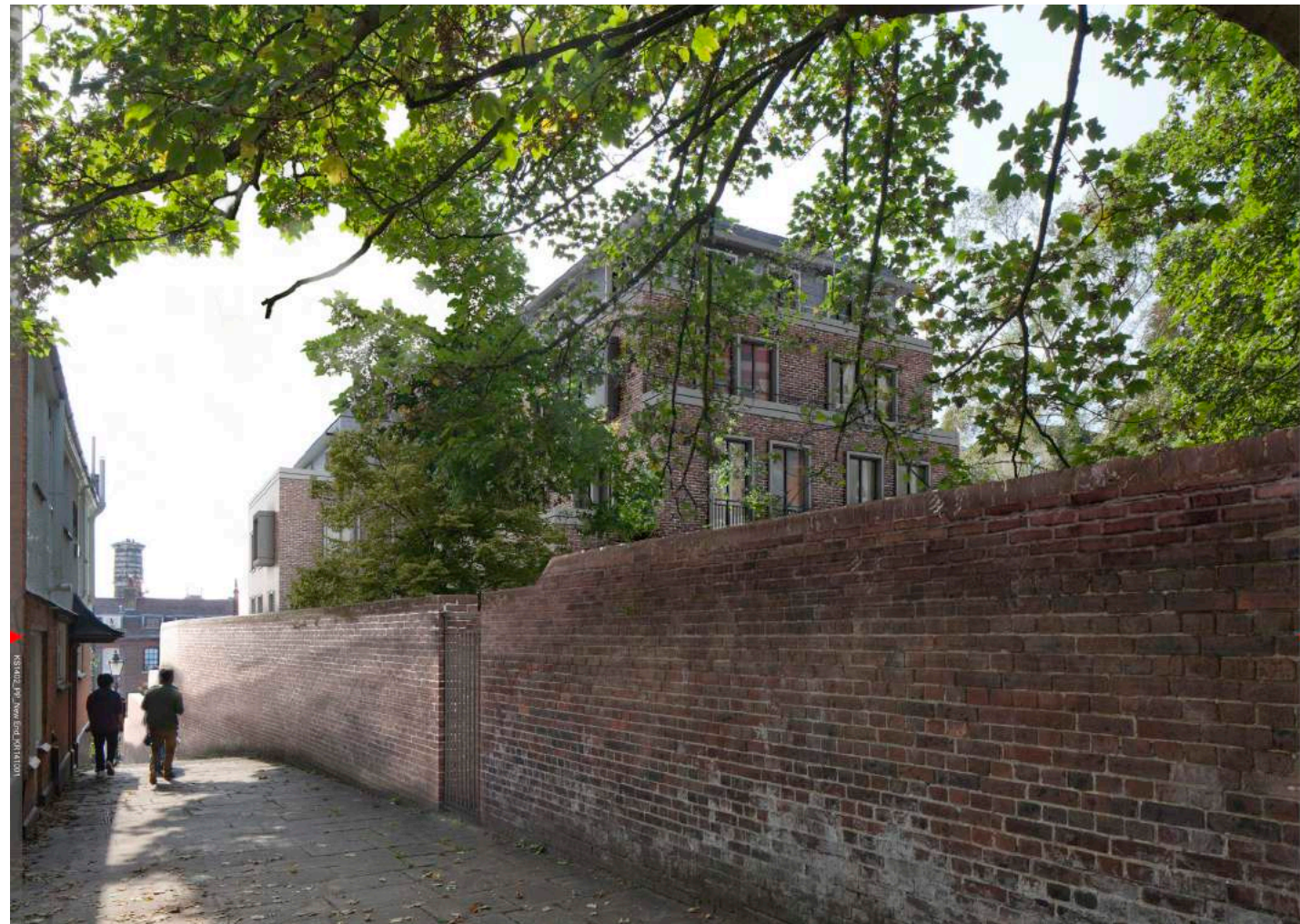
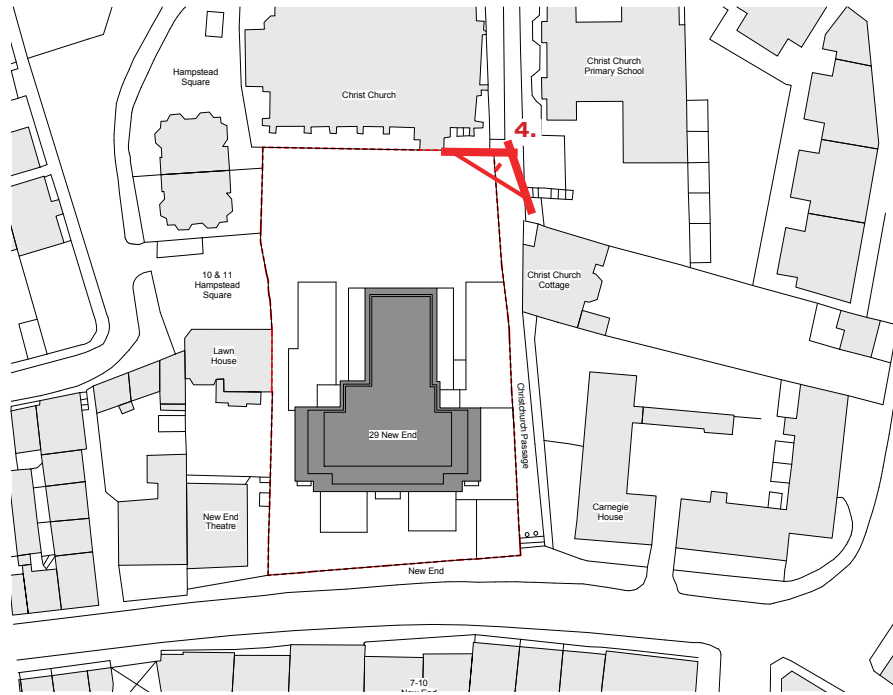


VERIFIED PLANNING PERMITTED PERSPECTIVE VIEW

3. PERSPECTIVE VIEW FROM HAMPSTEAD SQUARE

29 NEW END

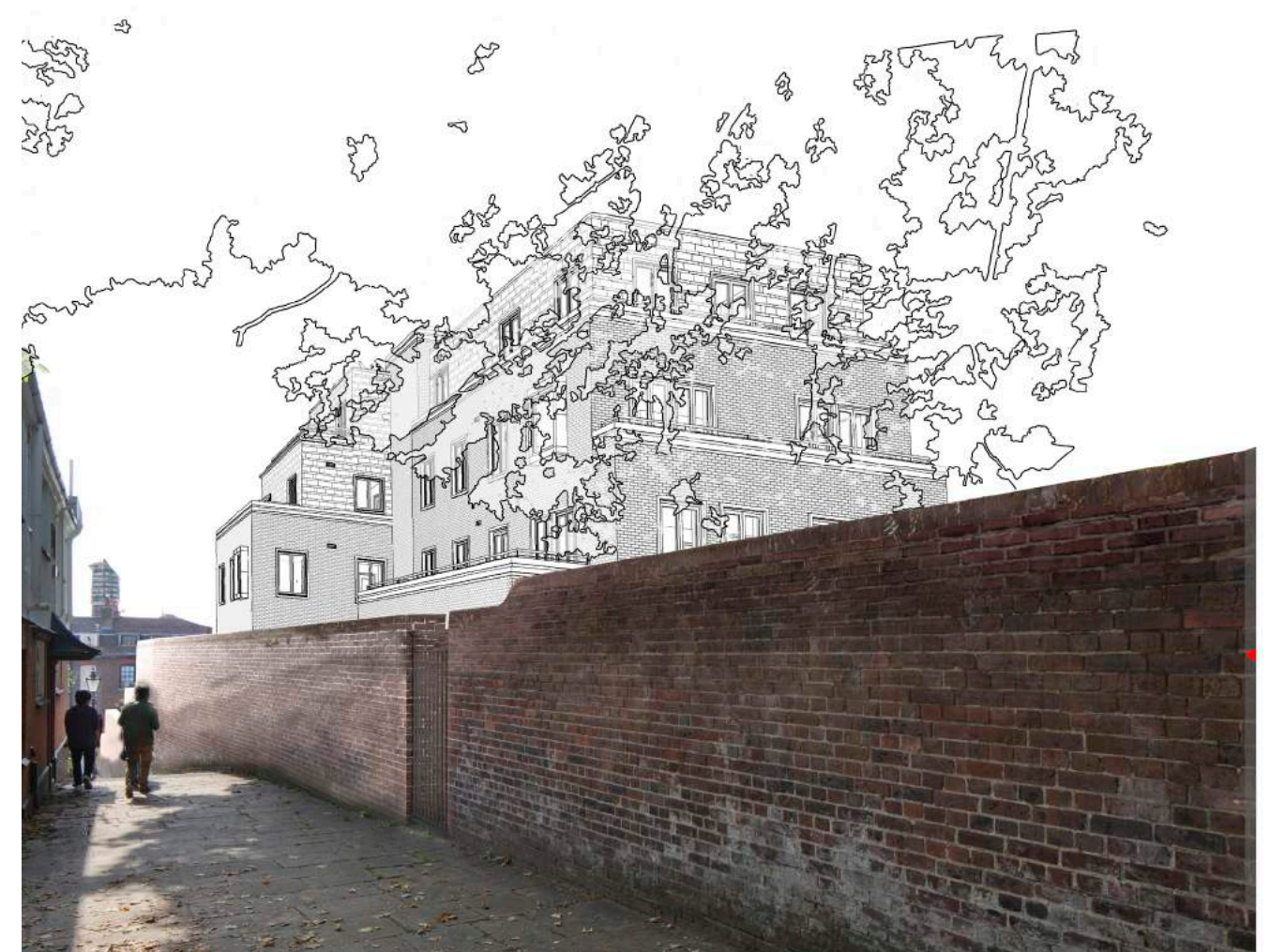
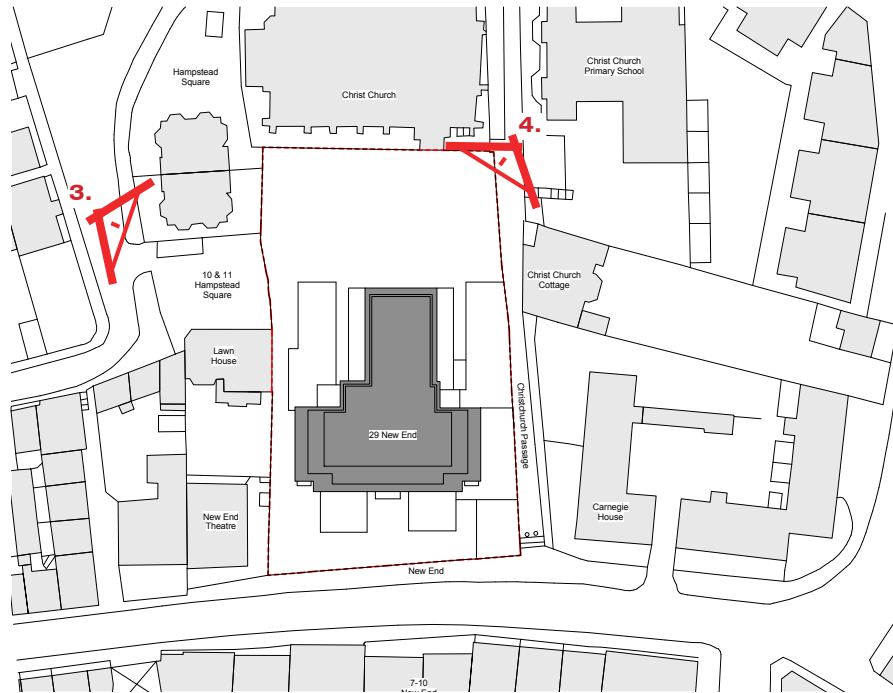
MINOR MATERIAL AMENDMENT APPLICATION



VERIFIED PLANNING PERMITTED PERSPECTIVE VIEW

4. PERSPECTIVE VIEW FROM CHRISTCHURCH PASSAGE

29 NEW END
MINOR MATERIAL AMENDMENT APPLICATION



3. PERSPECTIVE VIEW FROM HAMPSTEAD SQUARE

View taken with trees omitted.

29 NEW END

MINOR MATERIAL AMENDMENT APPLICATION

4. PERSPECTIVE VIEW FROM CHRISTCHURCH PASSAGE

View taken with trees omitted.