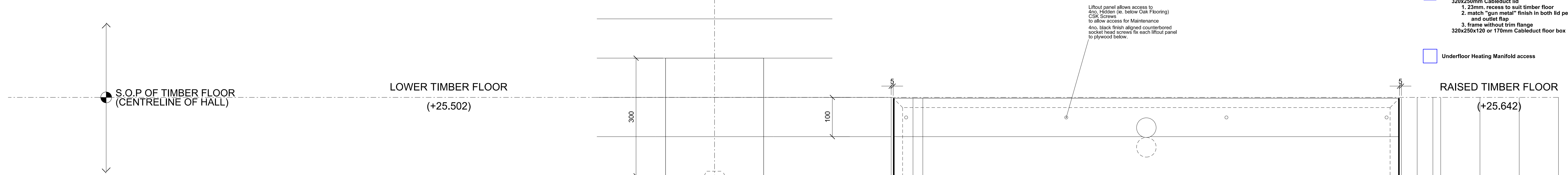


NOTES  
 DO NOT SCALE FROM THIS DRAWING.  
 CONTRACTOR TO CHECK ALL DIMENSIONS ON SITE.  
 ANY DISCREPANCIES TO BE REPORTED TO THE ARCHITECT IMMEDIATELY.

COPYRIGHT RICK MATHER ARCHITECTS LLP ©

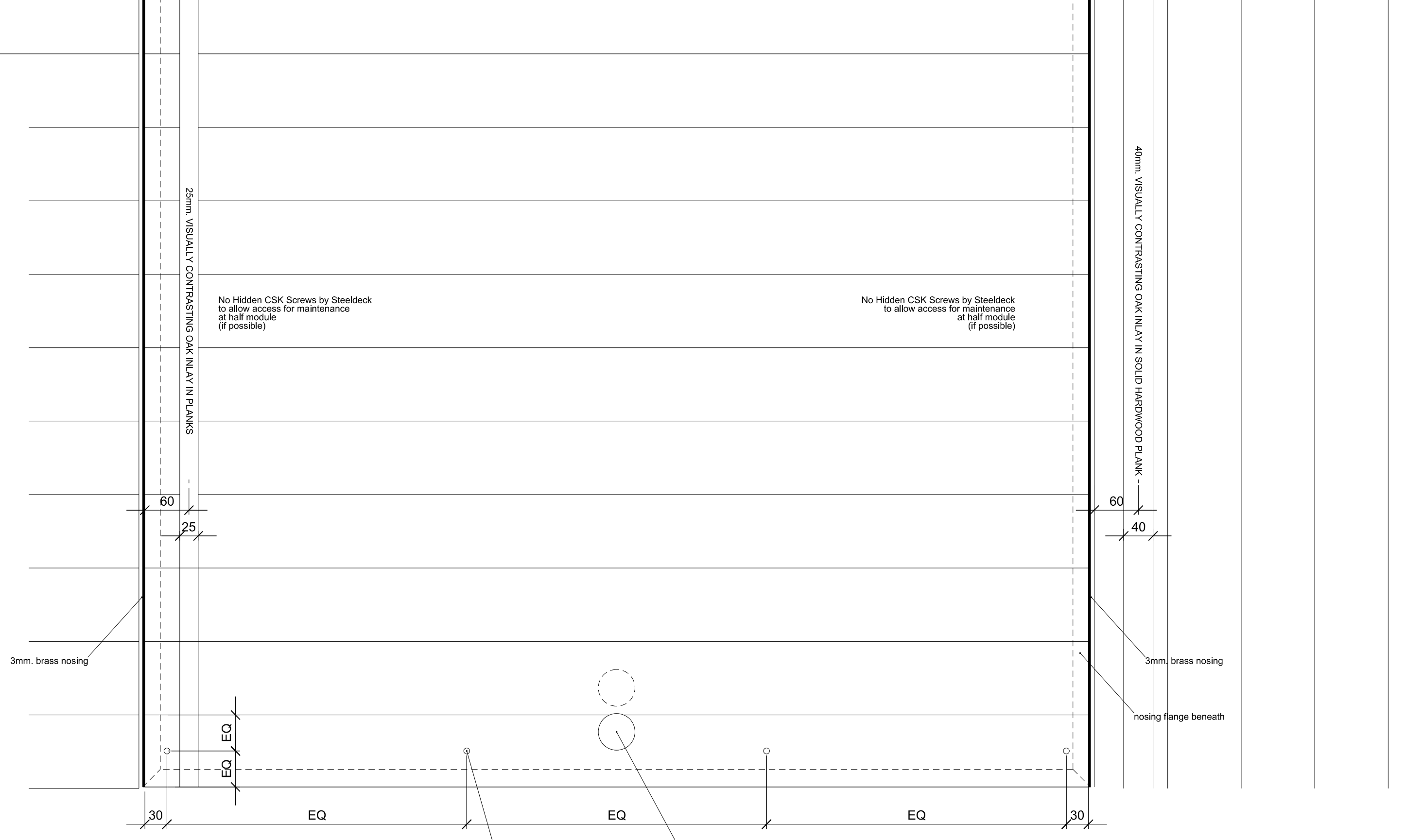
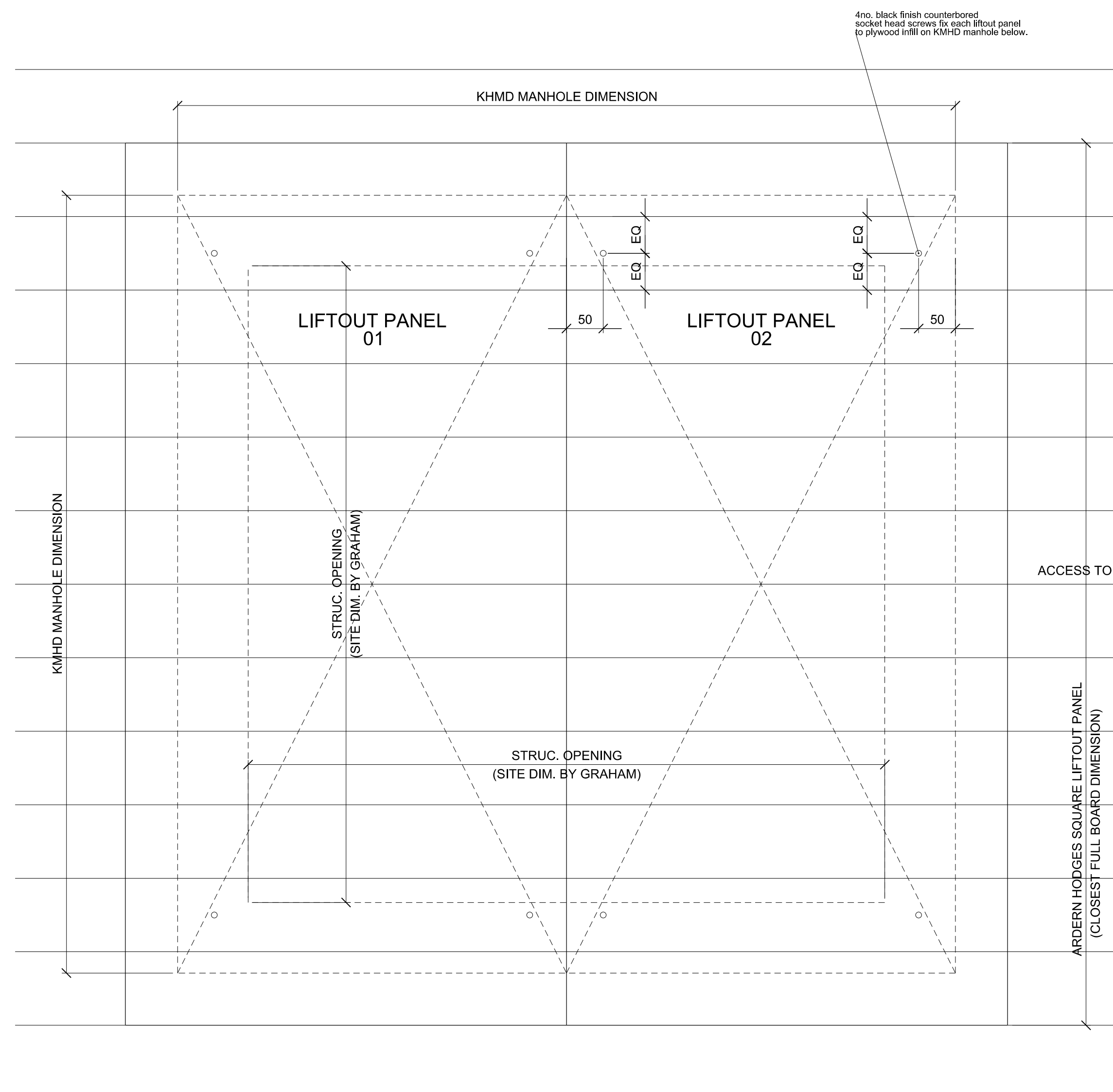
- Floor box set 01 (Ardern Hodges lid)  
 300x250mm Ardern Hodges lid  
 320x250x120mm Cableduct floor box
- Floor box set 02 or 03 (Cableduct lid)  
 320x250mm Cableduct lid  
 1. 23mm. recess to suit timber floor  
 2. match "gun metal" finish in both lid perimeter and outlet flap  
 3. frame without trim flange  
 320x250x120 or 170mm Cableduct floor box

Underfloor Heating Manifold access

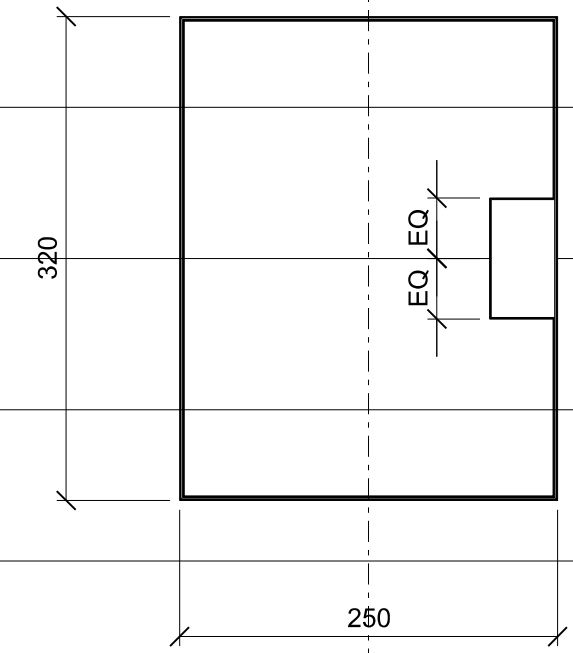


■ FLOOR BOX SET 01 (ARDERN HODGES LID)  
 REFER TO 597-43060C FOR 1:2 DETAILS.  
 AND 597-13074 FOR LOCATIONS

UNDERFLOOR HEATING MANIFOLD ACCESS (ARDERN HODGES LIFTOUT PANEL)



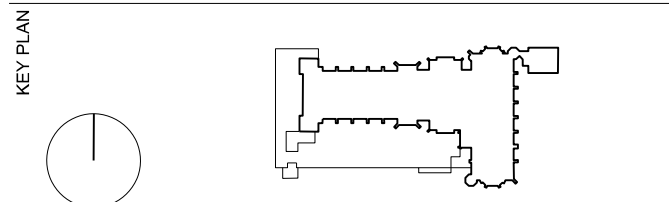
RAISED DIAS (TYPICAL MODULE)



■ FLOOR BOX SET 02 OR 03 (CABLEDUCT LID)  
 REFER TO 597-43060C FOR 1:2 DETAILS.  
 AND 597-13074 FOR LOCATIONS

REVISIONS

C1	14.11.17	ISSUED FOR CONSTRUCTION
REV	DATE	DESCRIPTION



STATUS  
**CONSTRUCTION**

**RICK MATHER ARCHITECTS ©**  
 123 Gordon Way Street London N9 1JP  
 T: 020 7244 1121 F: 020 7244 1122  
 info@rickmather.com www.rickmather.com

JOB  
**THE HONOURABLE SOCIETY OF LINCOLN'S INN  
 GREAT HALL AND LIBRARY**

TITLE  
**GREAT HALL FLOOR DETAILS**

DRAWN	JRD	JOB #	DRG #	REV
CHECKED	TP	SCALE@A1	SIZE	DATE
		1:5	A1	NOV 17
		1:10	A3	14.11.17