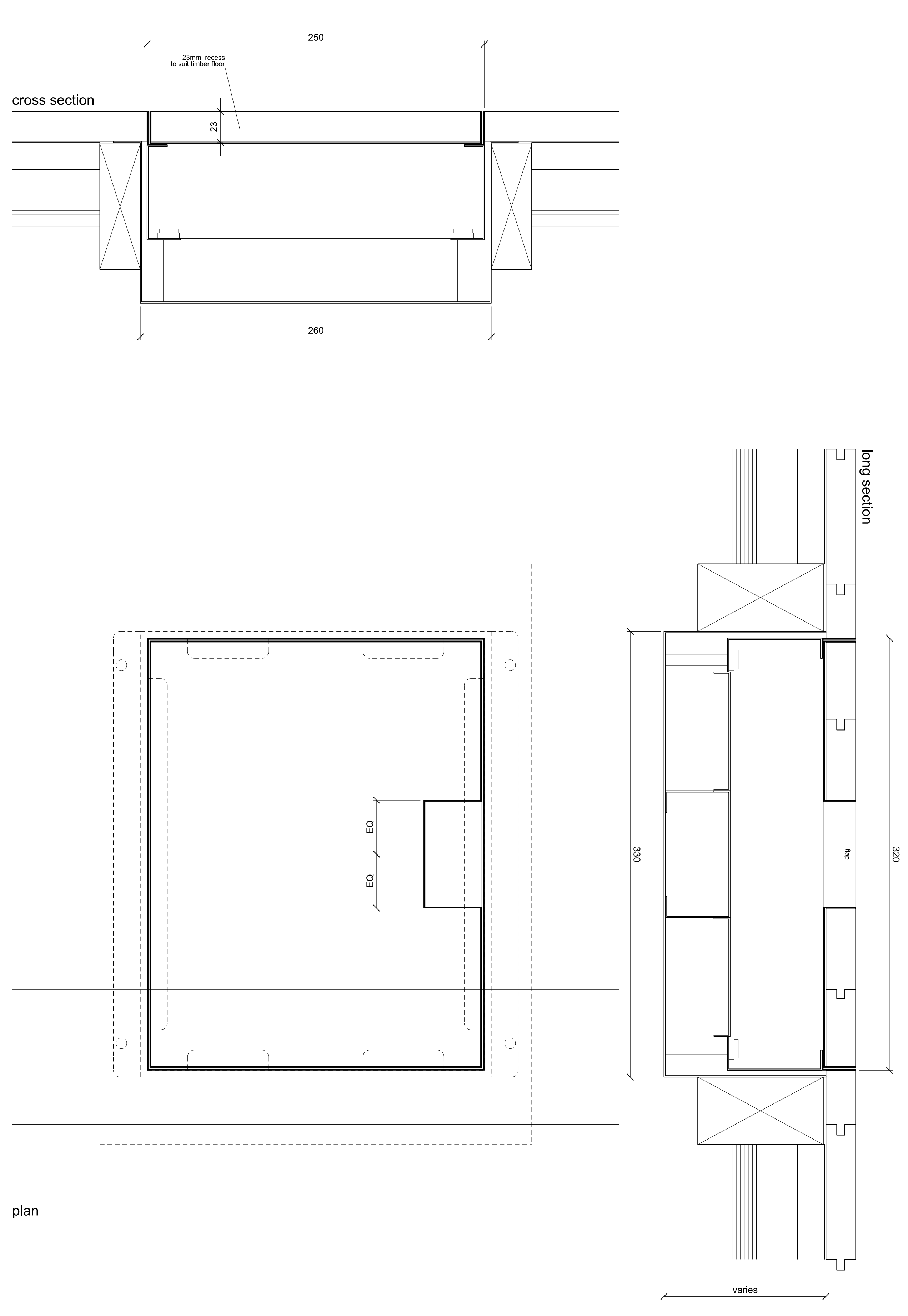


FLOOR BOX SET 01 (ARDERN HODGES LID)
 300x250mm Arderm Hodges lid
 320x250x120mm Cableduct floor box

REFER TO 597-13074 FOR LOCATIONS



FLOOR BOX SET 01 OR 02 (CABLEDUCT LID)
 320x250mm Cableduct lid
 1. 23mm. recess to suit timber floor
 2. match "gun metal" finish in both lid perimeter and outlet flap
 3. frame without trim flange
 320x250x120 or 170mm Cableduct floor box

REFER TO 597-13074 FOR LOCATIONS

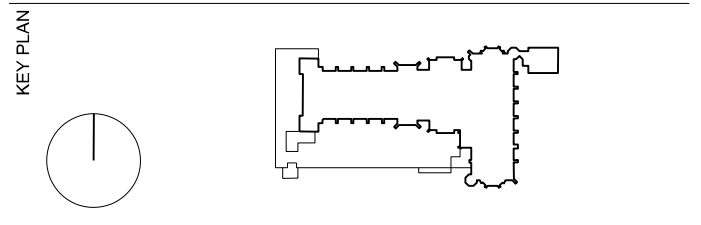
NOTES
 DO NOT SCALE FROM THIS DRAWING.
 CONTRACTOR TO CHECK ALL DIMENSIONS ON SITE.
 ANY DISCREPANCIES TO BE REPORTED TO THE ARCHITECT IMMEDIATELY.

COPYRIGHT RICK MATHER ARCHITECTS LLP ©

- Floor box set 01 (Arderm Hodges lid)
 300x250mm Arderm Hodges lid
 320x250x120mm Cableduct floor box
- Floor box set 02 or 03 (Cableduct lid)
 320x250mm Cableduct lid
 1. 23mm. recess to suit timber floor
 2. match "gun metal" finish in both lid perimeter and outlet flap
 3. frame without trim flange
 320x250x120 or 170mm Cableduct floor box

REVISIONS

REV	DATE	DESCRIPTION
C1	14.11.17	ISSUED FOR CONSTRUCTION



STATUS
CONSTRUCTION

RICK MATHER ARCHITECTS ©
 123 Gordon High Street London N31 1AP
 T: 020 7244 1121 F: 020 7244 1122
 info@rickmather.com www.rickmather.com

JOB
**THE HONOURABLE SOCIETY OF LINCOLN'S INN
 GREAT HALL AND LIBRARY**

TITLE
GREAT HALL FLOOR DETAILS

DRAWN	JRD	JOB #	DRG #	REV	
		597	43060C	C1	
CHECKED	TP	SCALE	SIZE	DATE	REV/DATE
		1:2 1:4	A1 A3	NOV 17	14.11.17