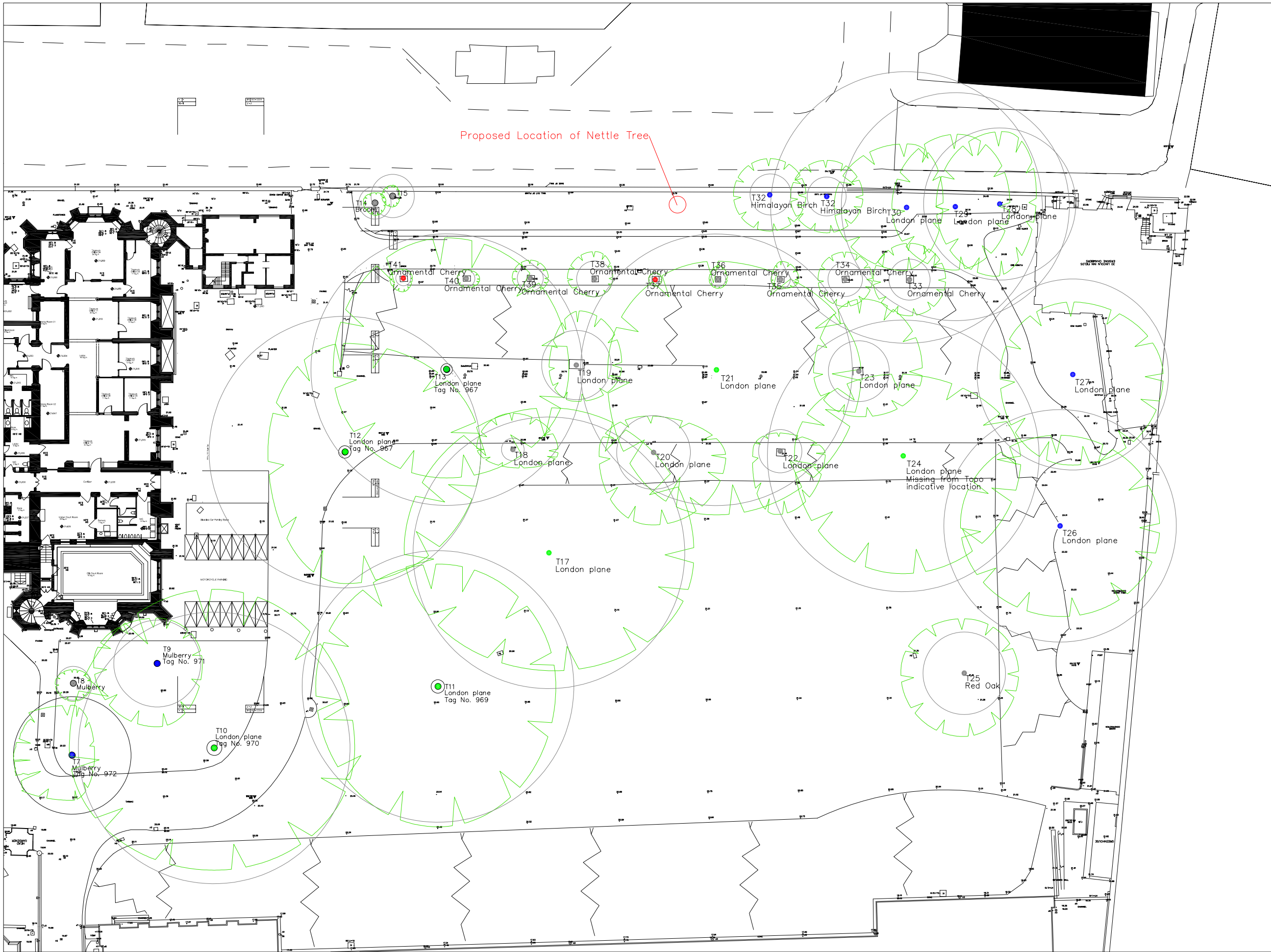


NOTES
 DO NOT SCALE FROM THIS DRAWING.
 CONTRACTOR TO CHECK ALL DIMENSIONS ON SITE.
 ANY DISCREPANCIES TO BE REPORTED TO THE ARCHITECT IMMEDIATELY.



Tree Survey Key

- Extent of Tree Canopy
- Theoretical Root Protection Area (BS5837)
- BS 5837 Category (See Below)
- Tree Survey Number
- Tree Name

BS 5837 Category
 (See Tree Survey for further details)

Category U Red Stem Disc
 Those in such a condition that any existing value would be lost within 10 years and which should in the current context, be removed for reasons of sound arboricultural management.

Category A Green Stem Disc
 Those of high quality and value: – in such a condition as to be able to make a substantial contribution (a minimum of 40 years is suggested).

Category B Blue Stem Disc
 Those of moderate quality and value: – those in such a condition as to make a significant contribution (a minimum of 20 years is suggested)

Category C Grey Stem Disc
 Those of low quality and value: – currently in adequate condition to remain until new planting could be established (a minimum of 10 years is suggested), or young trees with a stem diameter below 150 mm.

**Lincoln's Inn
 London,
 WC2A 3TL**

**Sheet 2 of 3
 Tree Survey Plan
 For
 The Honourable Society of Lincoln's Inn**
 Drawing showing
 Proposed Location of Nettle Tree

Ruskins Group Consultancy
 Arboricultural Consultants
 01277 849990 info@ruskins.co.uk
 www.ruskins.co.uk

Scale	1 : 200 @ A1	Drawn by	PW
Date	15/01/2016	Checked by	*
Project No.	0116-1845 Rev 1		
Dwg. No.	TSP 1		