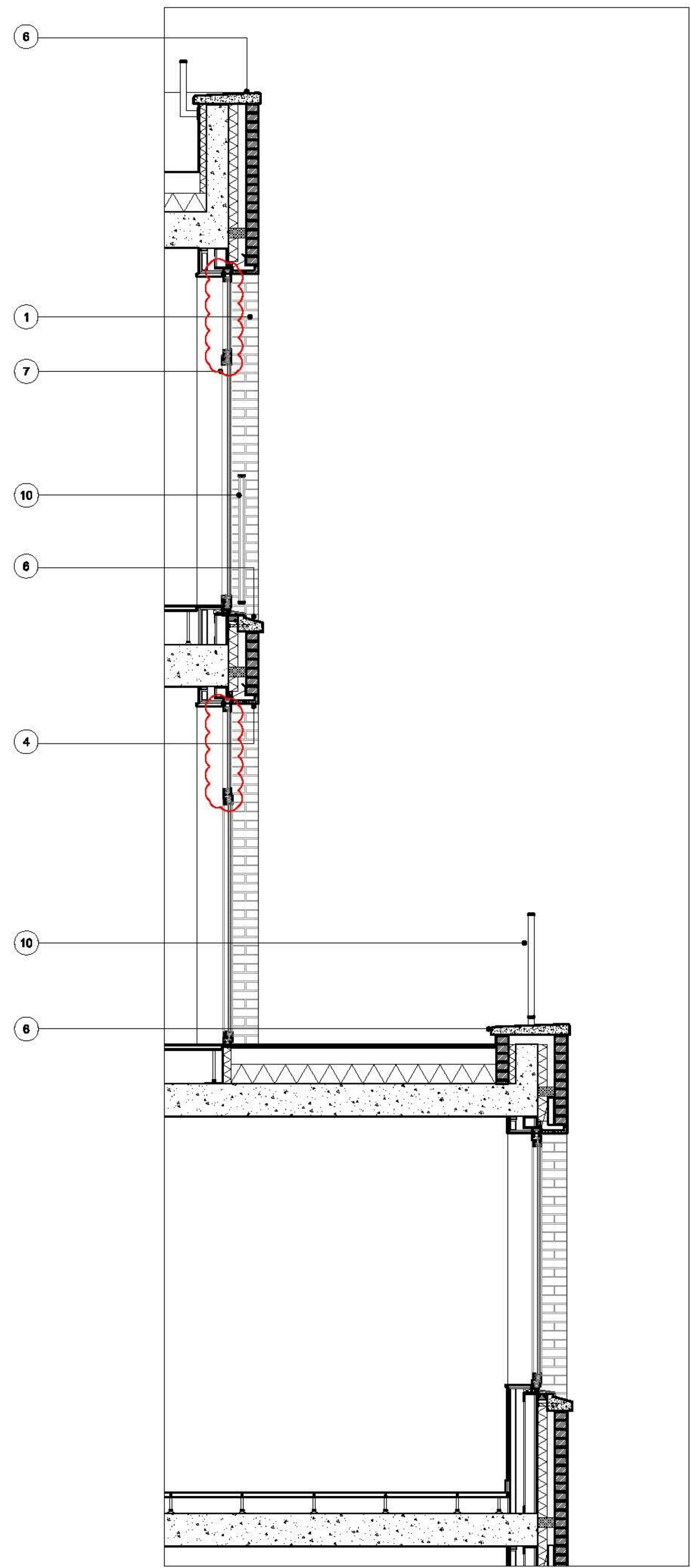


A



Workspace Building South Elevation

A



Section A-A

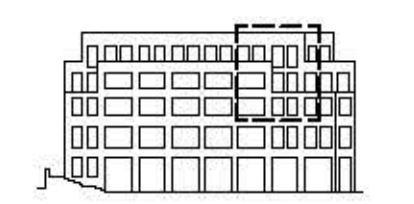


Do not scale from this drawing. Verify all dimensions on site. Drawing should be read in conjunction with information from all other design consultants and contractors. All drawings in digital format are for reference only, paper copies are available on request.

FOR PLANNING

© Maccreevor Levington Ltd.

- MATERIALS KEY**
1. Facing brick "Synthesis S21 - Richmond Blend" by "Freshfield Lane", laid in horizontal stretcher bond with Black-Grey colour mortar joint, "Tarma" colour ref: Y2 Medium.
 2. Facing brick "Synthesis S21 - Richmond Blend" by "Freshfield Lane", laid in vertical stretcher bond with Black-Grey colour mortar joint, "Tarmac" colour ref: Y2 Medium.
 3. Brick sill featuring "Synthesis S21 - Richmond Blend" brick by "Freshfield Lane".
 4. Brick slip clad lintel featuring "Synthesis S21 - Richmond Blend" brick by "Freshfield Lane".
 5. Brick slip clad soffit panel featuring "Synthesis S21 - Richmond Blend" brick by "Freshfield Lane", or similar approved.
 6. Portland Stone reconstituted stone window sills and parapet copings.
 7. Outward opening anodized aluminium windows, finish ref: Anolok 549 Dark Bronze.
 8. Anodized aluminium door frames, finish ref: Anolok 549 Dark Bronze.
 9. Steel louvered doors, polyester powder coated, matt, RAL 8080.
 10. Polyester powder coated steel balustrades, finish matt, RAL 8080.
 11. Polyester powder coated stainless steel signage, finish matt, RAL 8080.
 12. Polyester powder coated steel gates, finish matt, RAL 8080.
 13. Anodized aluminium acoustic louvres, finish ref: Anolok 549 Dark Bronze.



A	Planning amendments	CGP	20/04/18
Rev	Details	Drwn	Date

Application 02 Expansion of Kingsgate Primary School & Redevelopment of Liddell Road Phase 02

Client: London Borough of Camden
 Title: Workspace Bay Study
 Strip Section 02
 Scale: 1:50 @ A3
 Date: 01-12-2014
 Drawn TO

MLUK / 403 / P2 / 541 / Rev A

MaccreevorLevington
 3rd Floor
 19-21 Nile Street
 London N1 7LL
 t +44(0)207 336 73 53
 f +44(0)207 336 78 55
 e uk@ml-architects.com