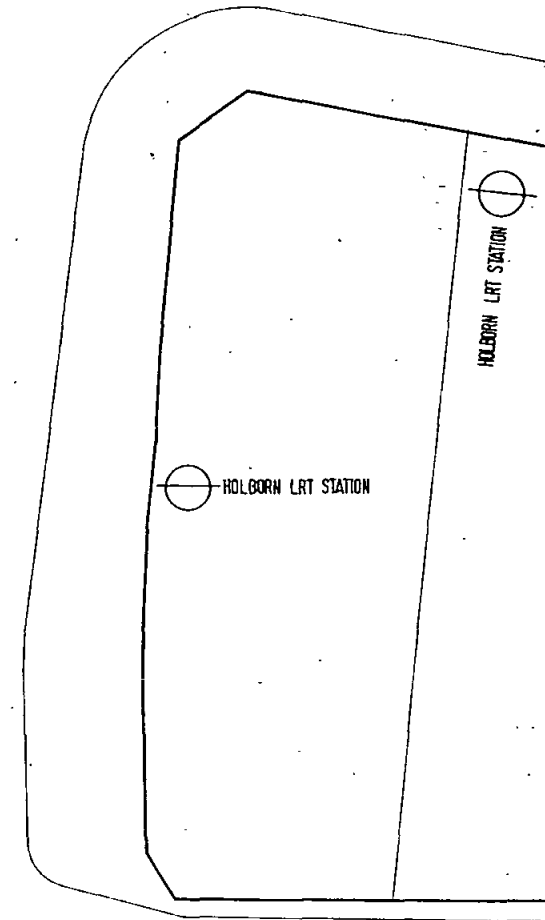


9502104

95002



LONDON BOROUGH OF CAMDEN
TOWN AND COUNTRY PLANNING ACTS

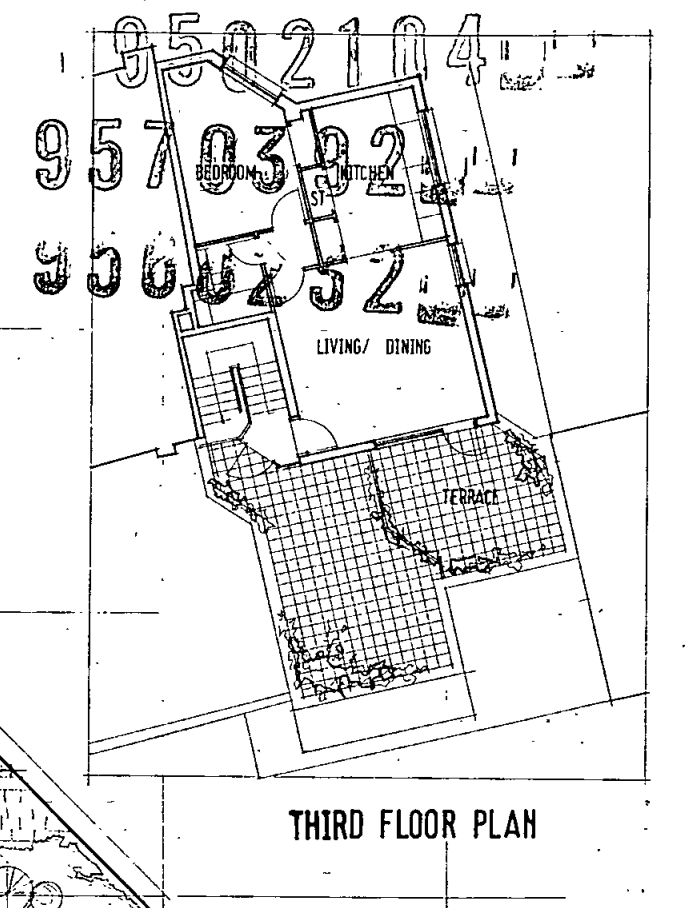
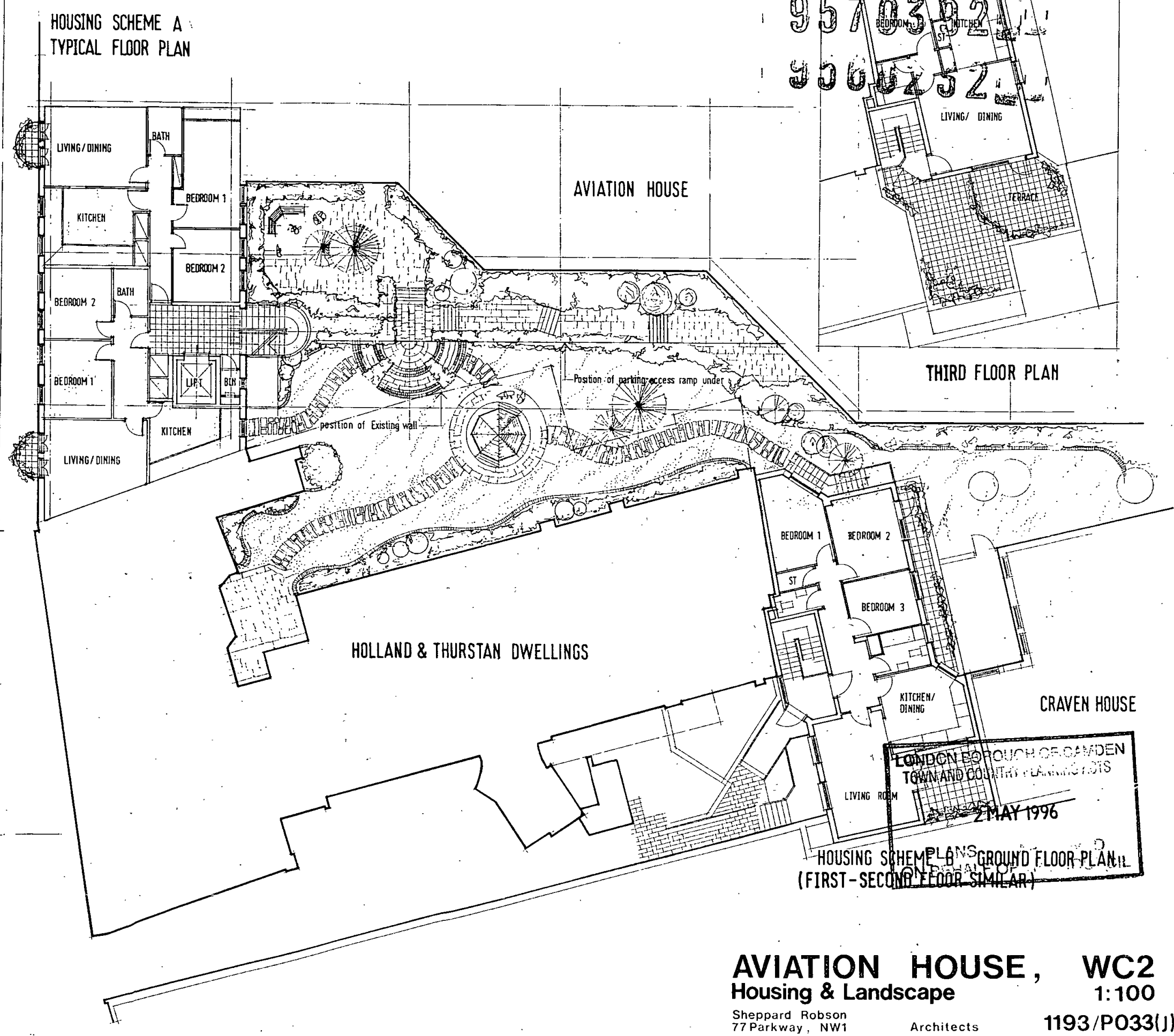
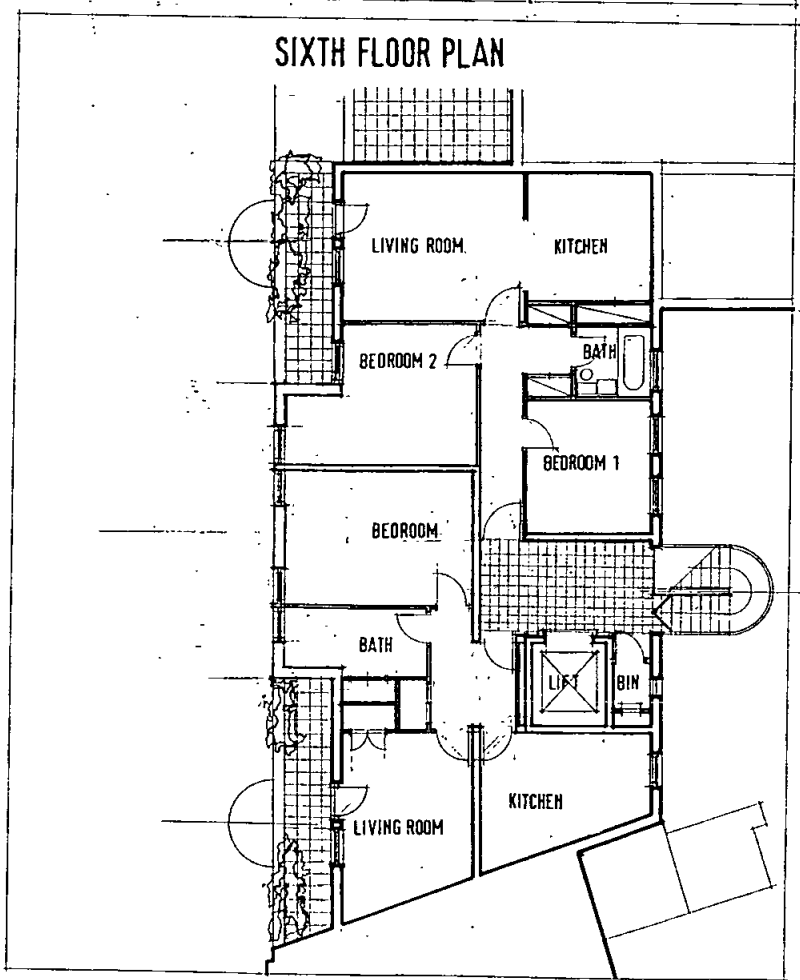
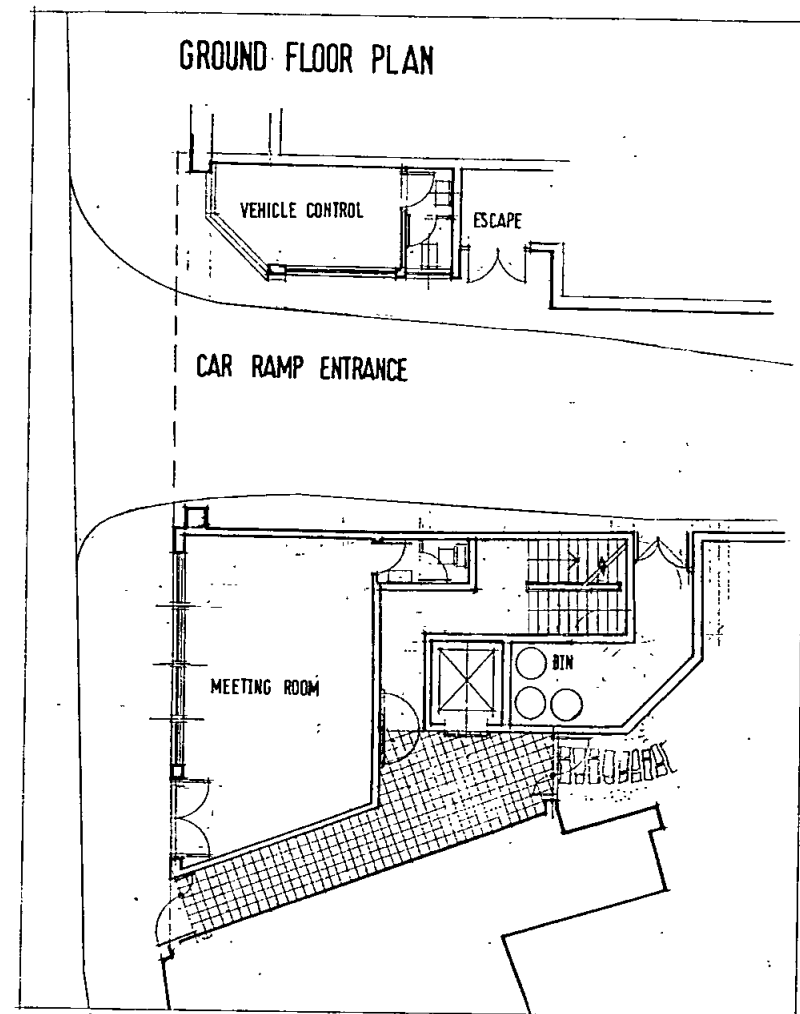
- 2 MAY 1996

PLANS APPROVED
ON BEHALF OF THE COUNCIL

AVIATION HOUSE, WC2
Ground Floor Plan
1:200

Sheppard Robson
77 Parkway, NW1 Architects

1193/P004(J)

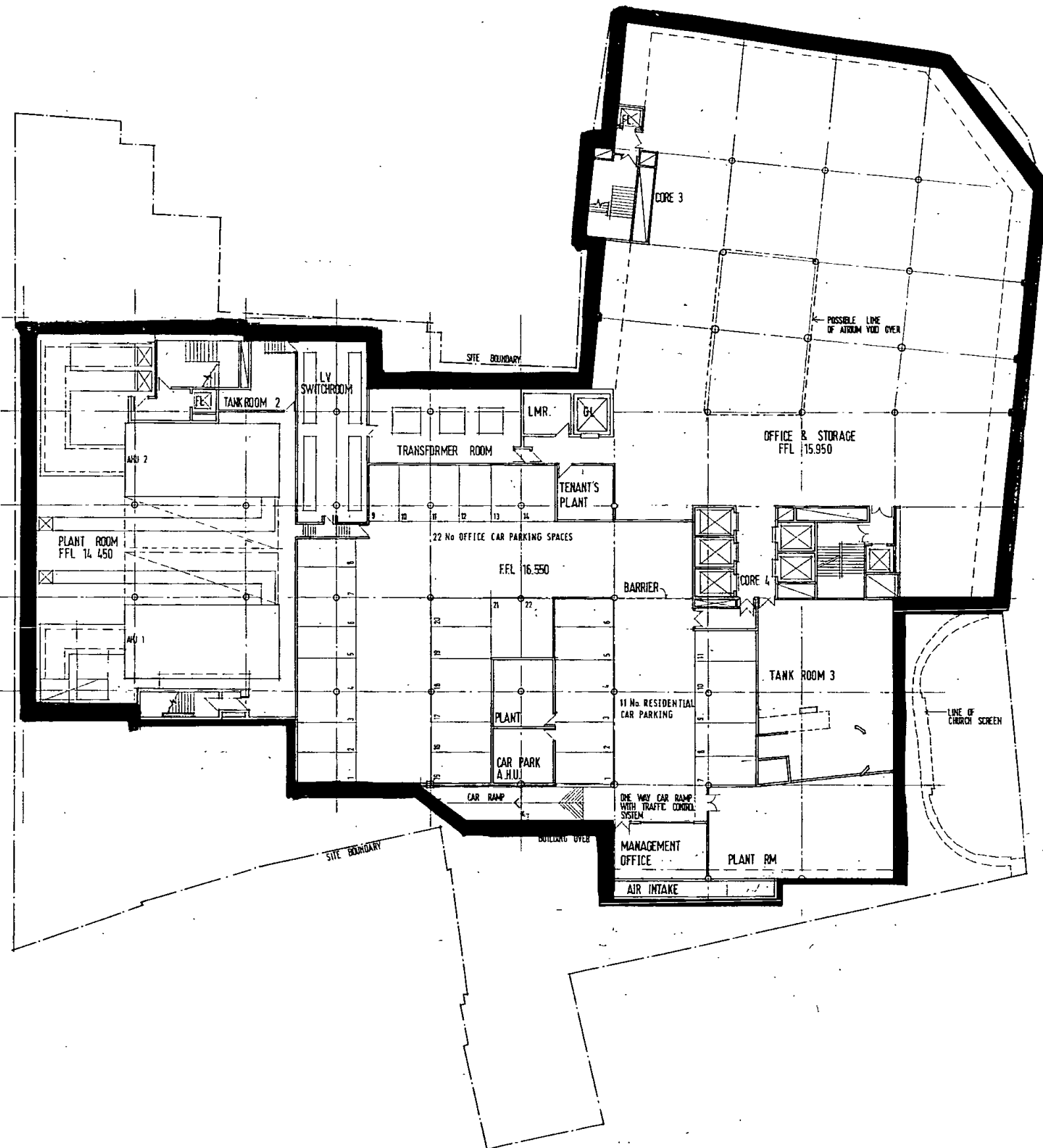


AVIATION HOUSE, WC2
 Housing & Landscape 1:100
 Sheppard Robson Architects 77 Parkway, NW1 1193/P033(J)

9570392

9502104

9500232

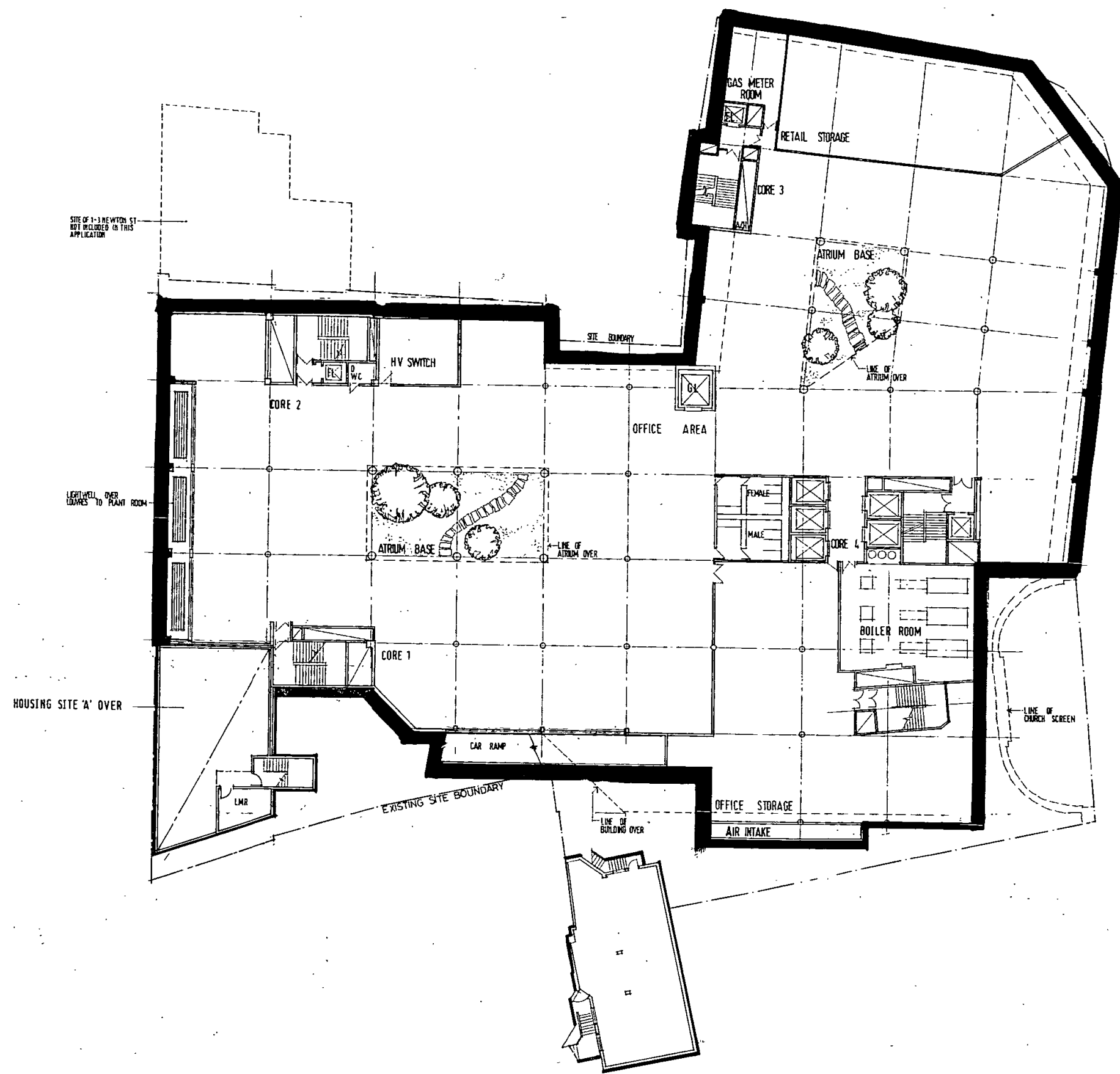


LONDON BOROUGH OF CAMDEN
 TOWN AND COUNTRY PLANNING ACTS
 - 2 MAY 1996
 PLANS APPROVED
 ON BEHALF OF THE COUNCIL

AVIATION HOUSE, WC2
Basement Plan 1:200
 Sheppard Robson
 77 Parkway, NW1 Architects 1193/P002(J)

9570392
9502104

9500232

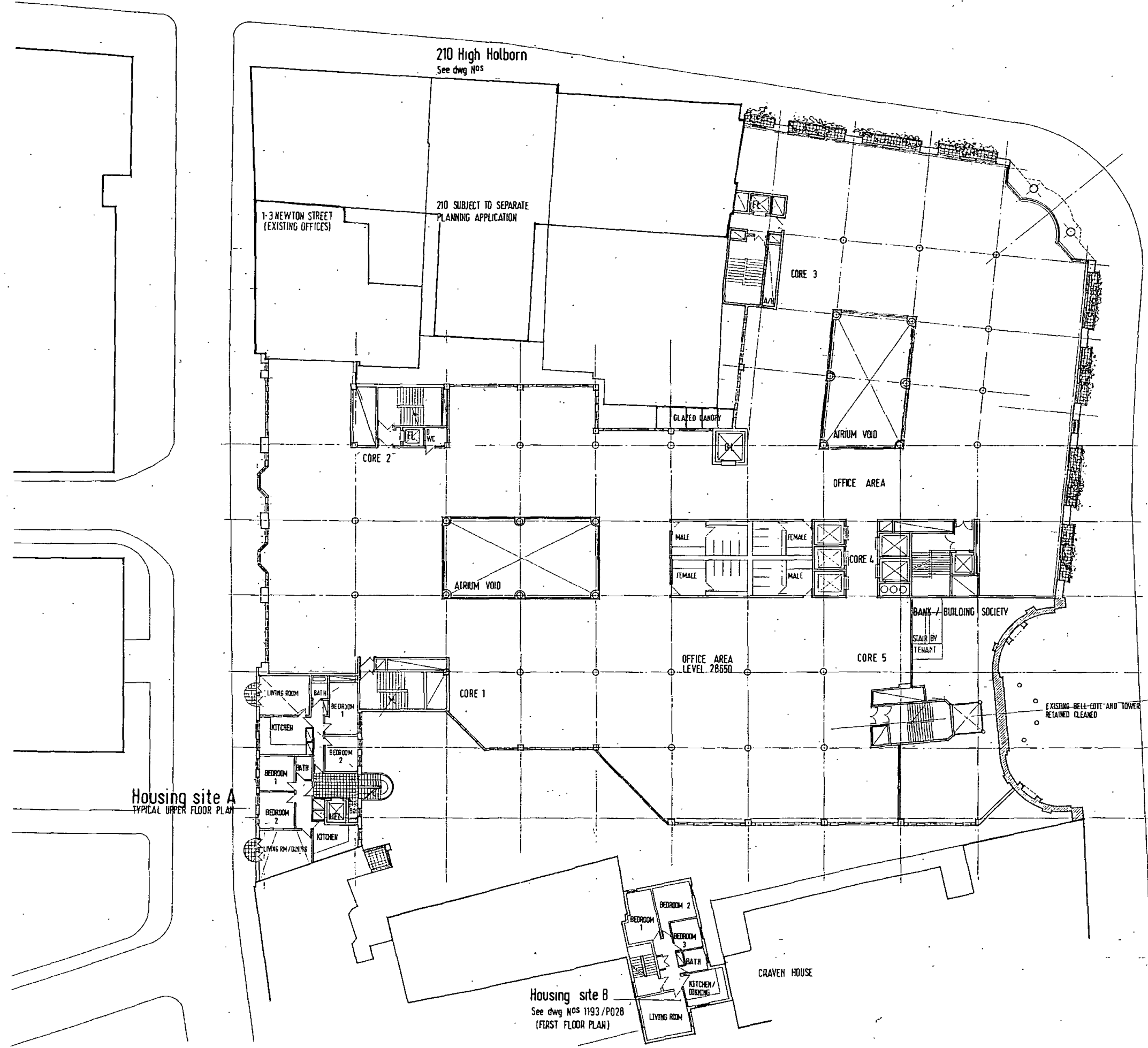


LONDON BOROUGH OF CAMDEN
TOWN AND COUNTRY PLANNING ACTS
- 2 MAY 1996
PLANS A-B-D
ON BEHALF OF THE COUNCIL

AVIATION HOUSE, WC2
Lower Ground Floor Plan 1:200
Sheppard Robson
77 Parkway, NW1 Architects 1193/P003(U)

9570392
19502104

19500232



LONDON BOROUGH OF CAMDEN
TOWN AND COUNTRY PLANNING ACTS

- 2 MAY 1996

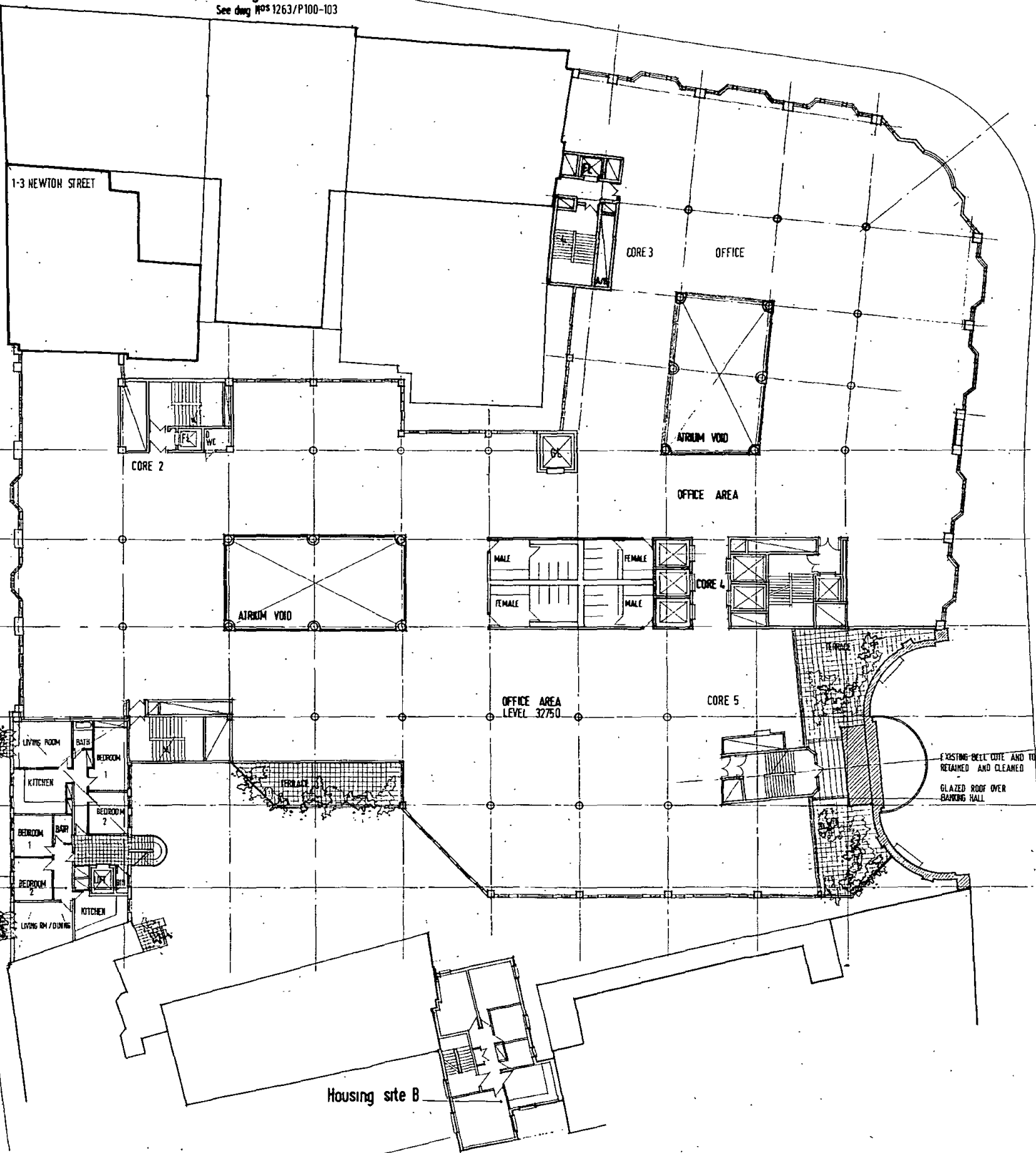
PLANS APPROVED
ON BEHALF OF THE COUNCIL

AVIATION HOUSE, WC2
First Floor Plan
 Sheppard Robson
 77 Parkway, NW1 Architects
 1193/P005(J)
 1:200

9570392
0502104

0500232

210 High Holborn
See drawings Nos 1263/P100-103



LONDON BOROUGH OF CAMDEN
TOWN AND COUNTRY PLANNING ACTS
- 2 MAY 1996
PLANS APPROVED
ON BEHALF OF THE COUNCIL

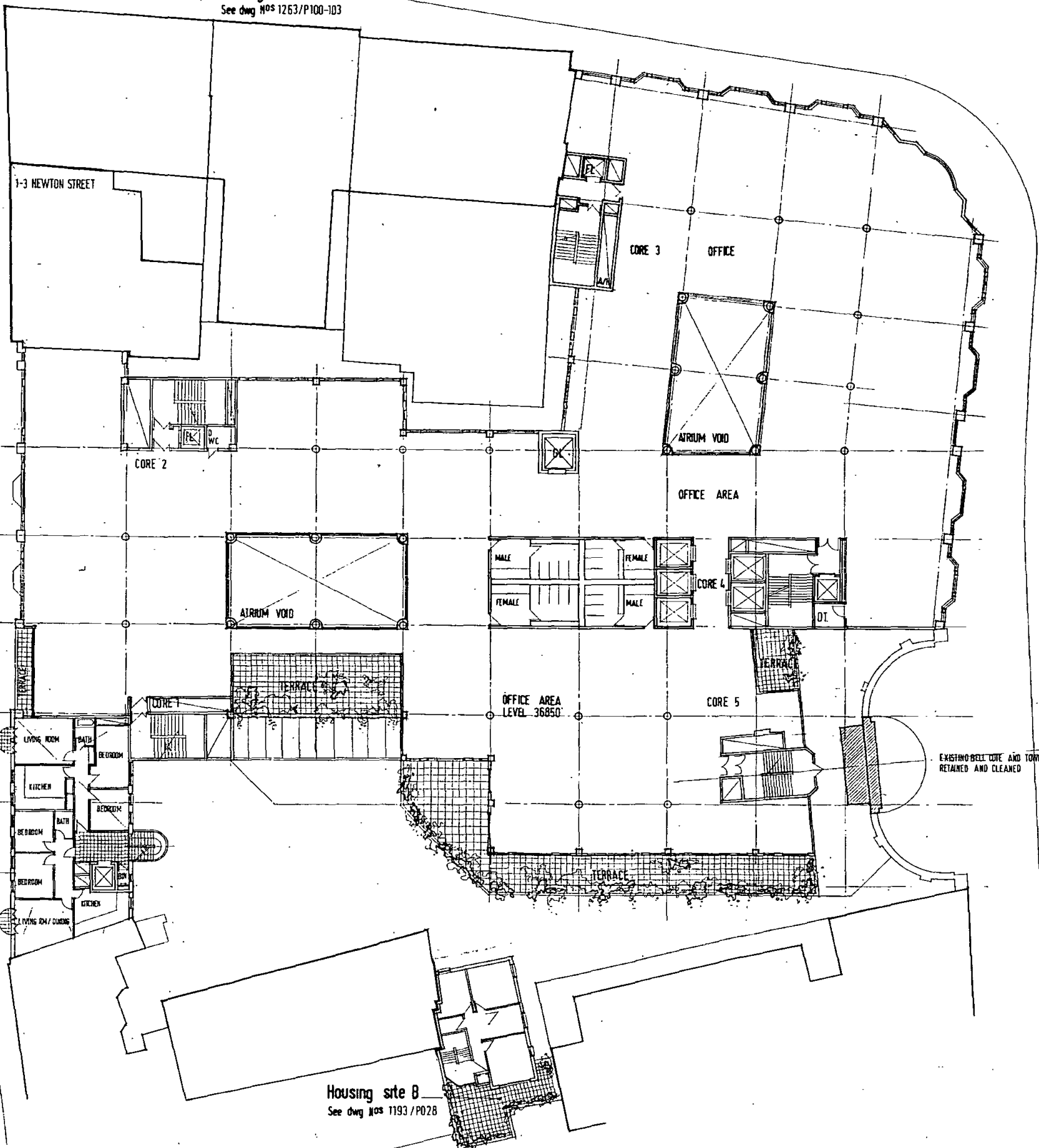
AVIATION HOUSE, WC2
Second Floor Plan 1:200
Sheppard Robson Architects
77 Parkway, NW1 1193/P006(J)

9570392

9502104

1330023

210 High Holborn
See dwg Nos 1263/P100-103



HOUSING SITE A
TYPICAL UPPER FLOOR

Housing site B
See dwg Nos 1193/P028

LONDON BOROUGH OF CAMDEN
TOWN AND COUNTRY PLANNING ACTS
- 2 MAY 1996
PLANS APPROVED
ON BEHALF OF LOCAL COUNCIL

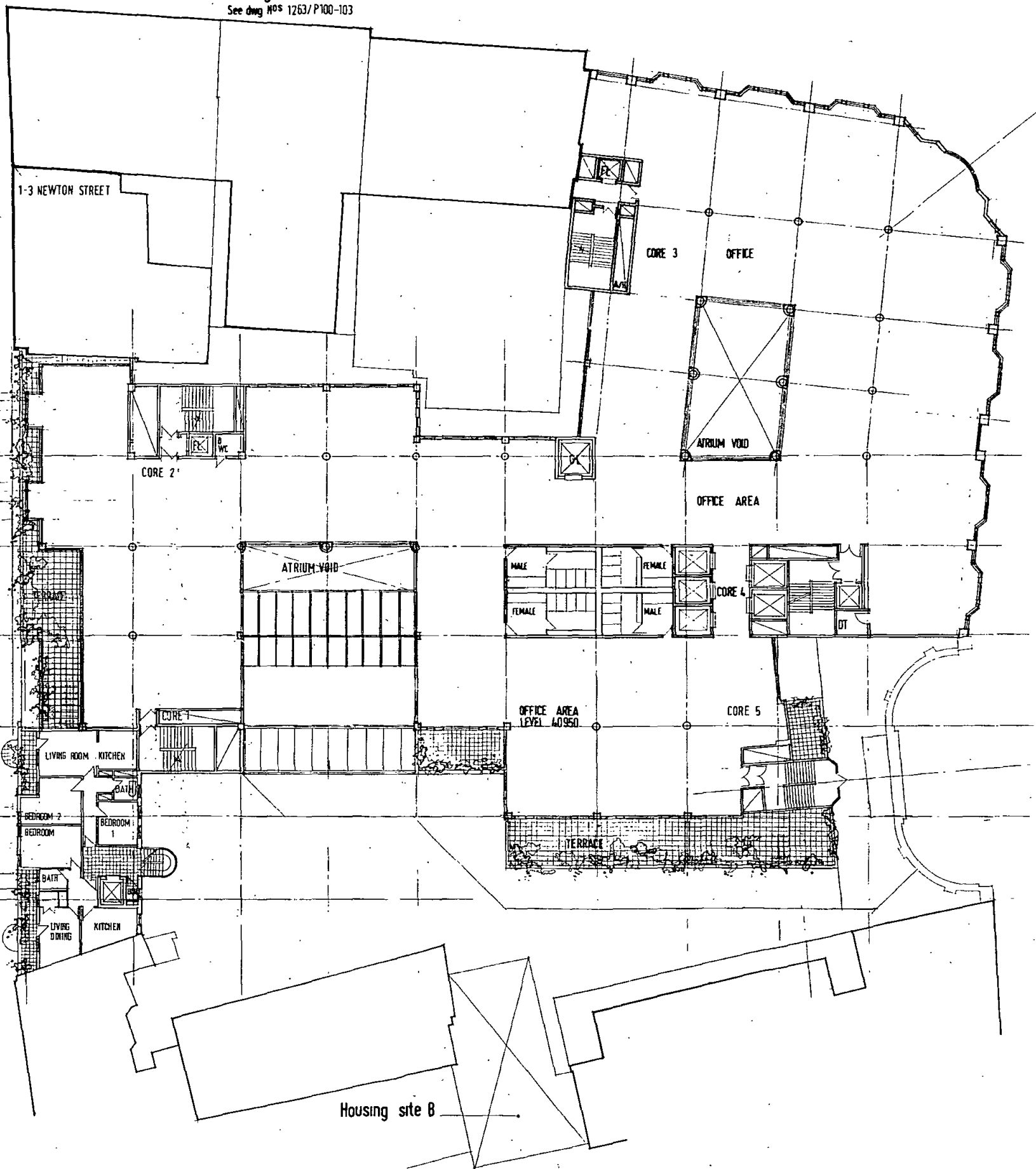
AVIATION HOUSE, WC2
Third Floor Plan
 1:200
 Sheppard Robson
 77 Parkway, NW1 Architects
 1193/P007(J)

9570392

19502104

1350237

210 High Holborn
See dwg nos 1263/P100-103



Housing site A
SIXTH FLOOR PLAN

Housing site B

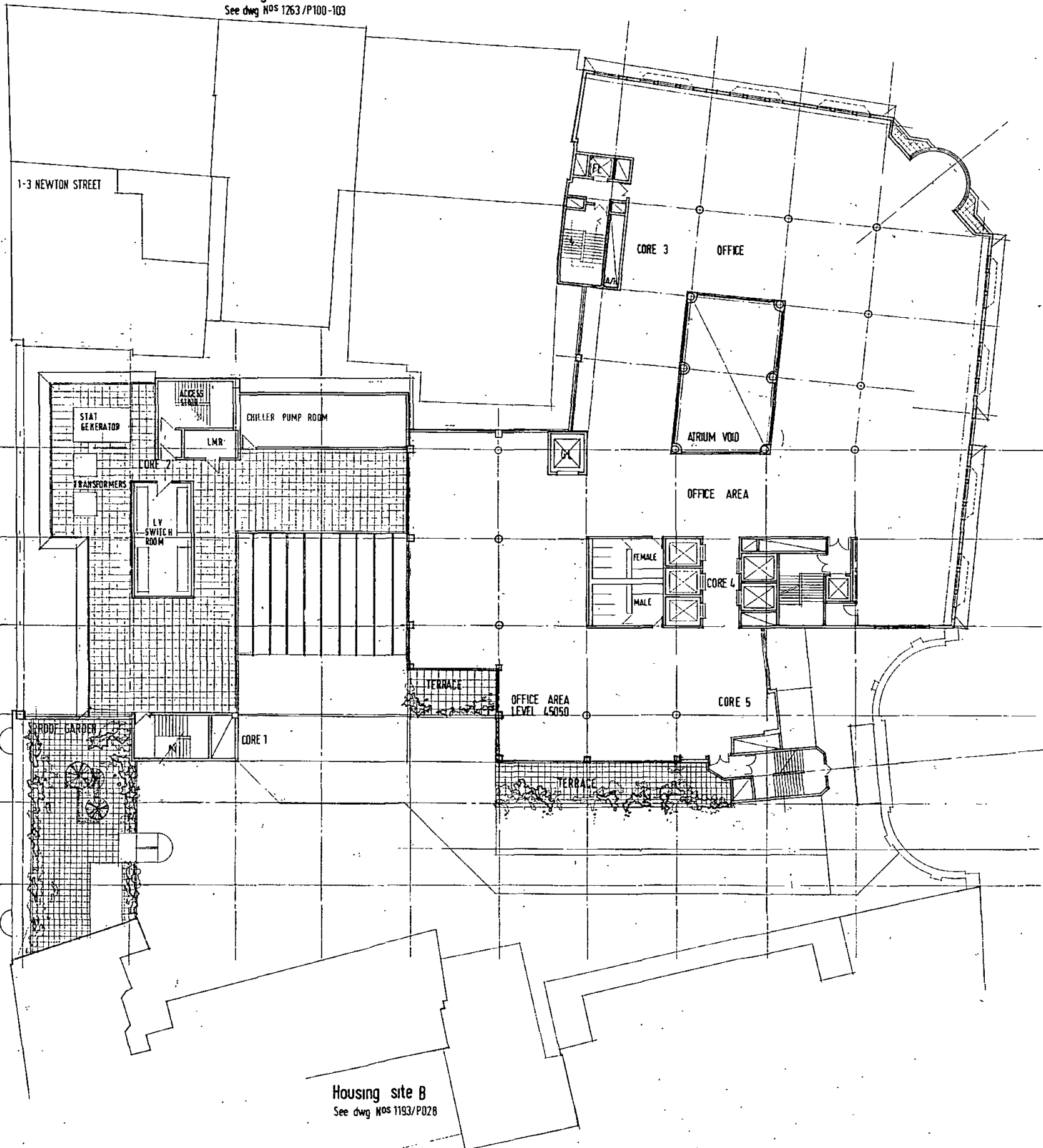
LONDON BOROUGH OF CAMDEN
TOWN AND COUNTRY PLANNING ACTS
- 2 MAY 1996
PLANS
ON BEHALF OF:

AVIATION HOUSE, WC2
Fourth Floor Plan 1:200
 Sheppard Robson Architects 1193/P008(J)

9570592
3002104

300232

210 High Holborn
See dwg Nos 1263/P100-103



Housing site A

Housing site B
See dwg Nos 1193/P028

LONDON BOROUGH OF CROYDON
TOWN AND COUNTRY PLANNING ACTS
- 2 MAY 1996
PLANS APPROVED
ON BEHALF OF THE COUNCIL

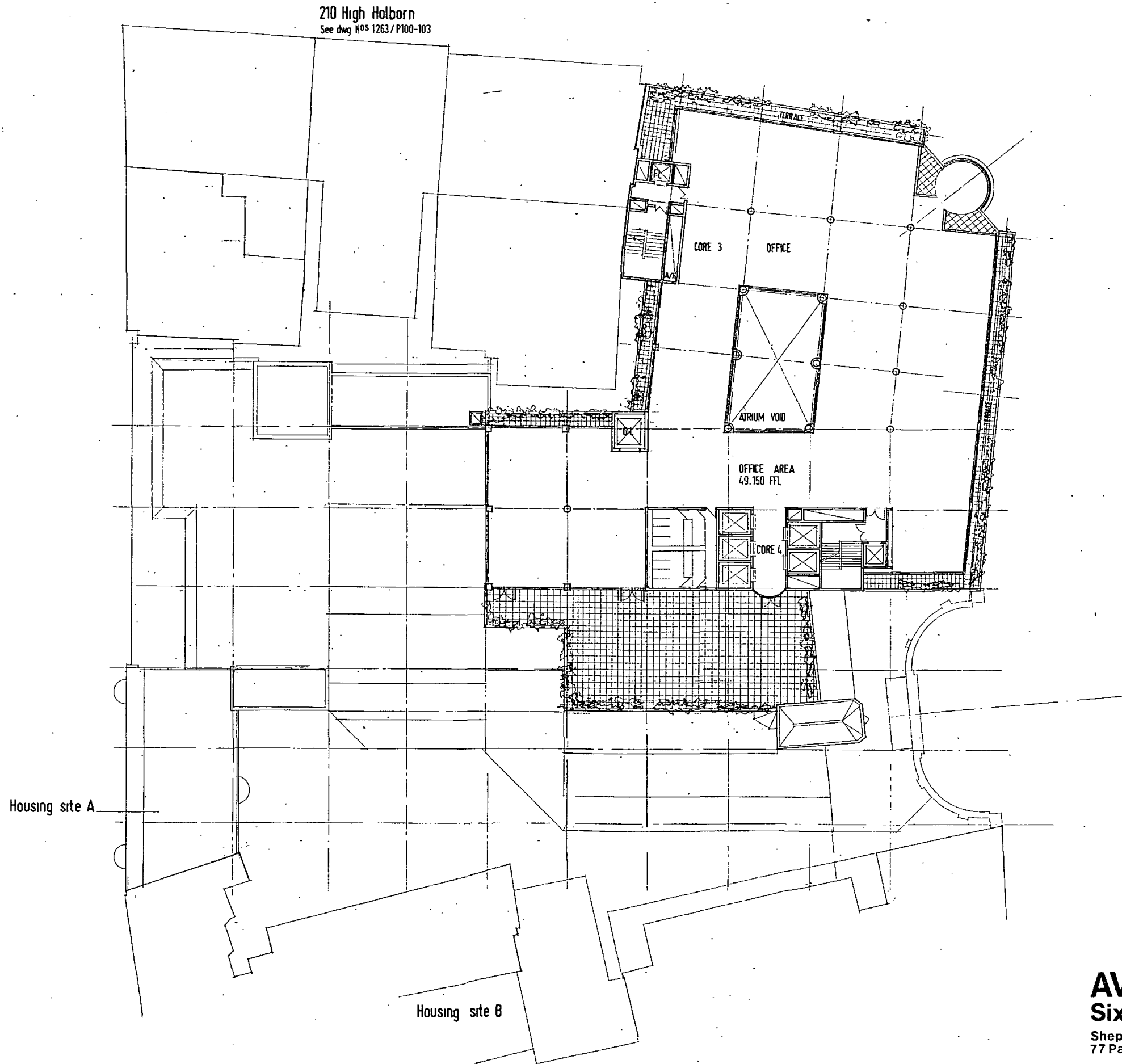
AVIATION HOUSE, WC2
Fifth Floor Plan
 1:200
 Sheppard Robson Architects
 77 Parkway, NW1
 1193/P009 (J)

9570392

19502104

9560232

210 High Holborn
See dwg nos 1263/P100-103



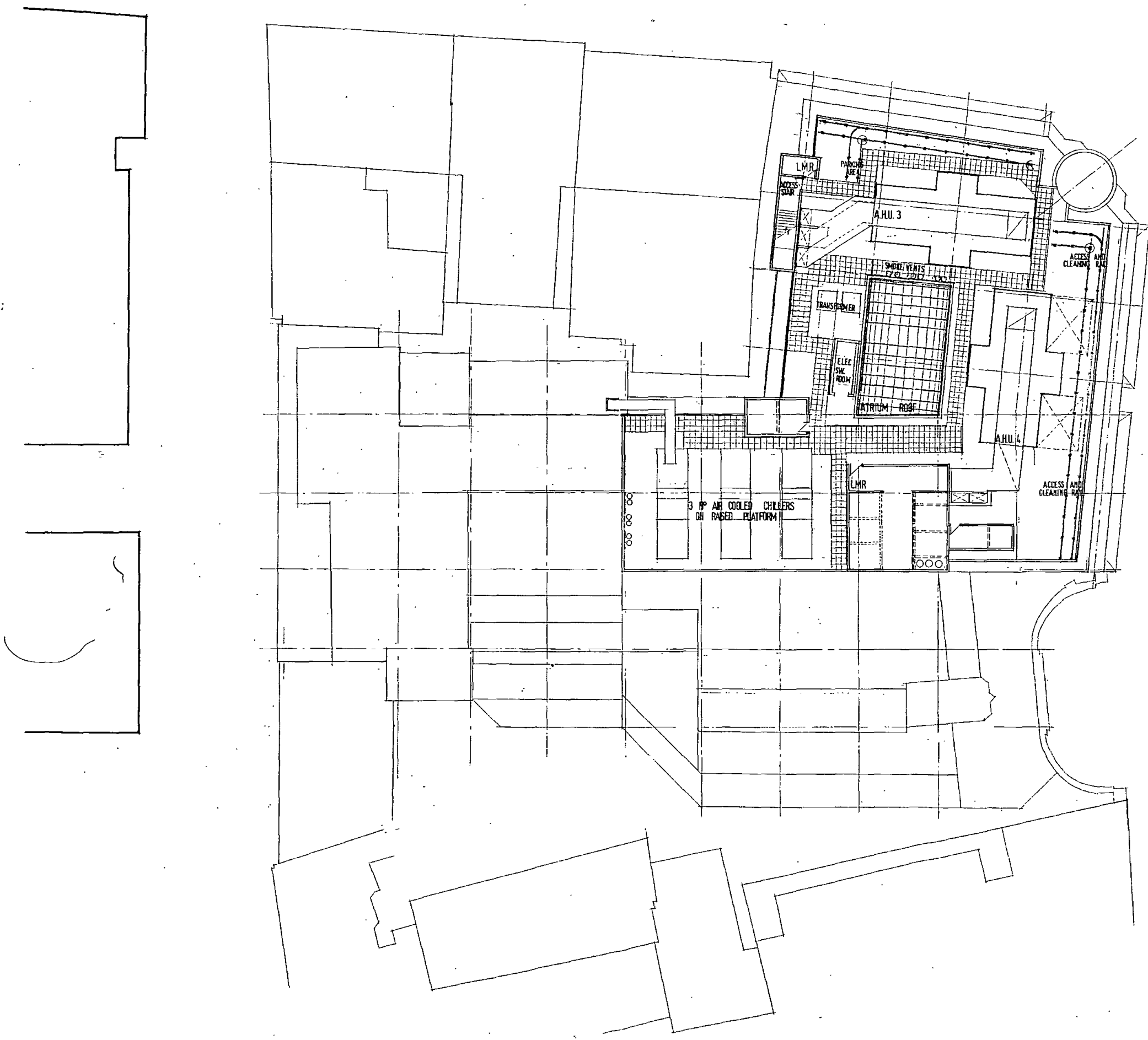
LONDON BOROUGH OF CAMDEN
TOWN AND COUNTRY PLANNING ACTS
- 2 MAY 1996
PLANS APPROVED
ON BEHALF OF THE COUNCIL

AVIATION HOUSE, WC2
Sixth Floor Plan
1:200
Sheppard Robson
77 Parkway, NW1 Architects
1193/P010(J)

9570392

3502104

9566-02

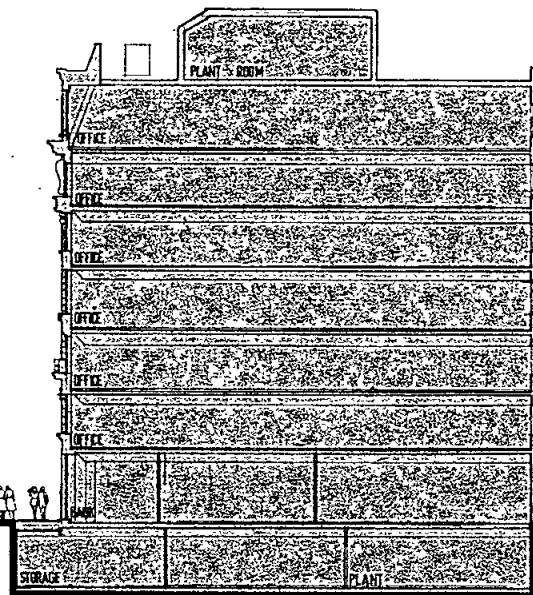


LONDON BOROUGH OF CAMDEN
 TOWN AND COUNTRY PLANNING ACTS
 - 2 MAY 1996
 PLANS APPROVED
 ON BEHALF OF THE COUNCIL

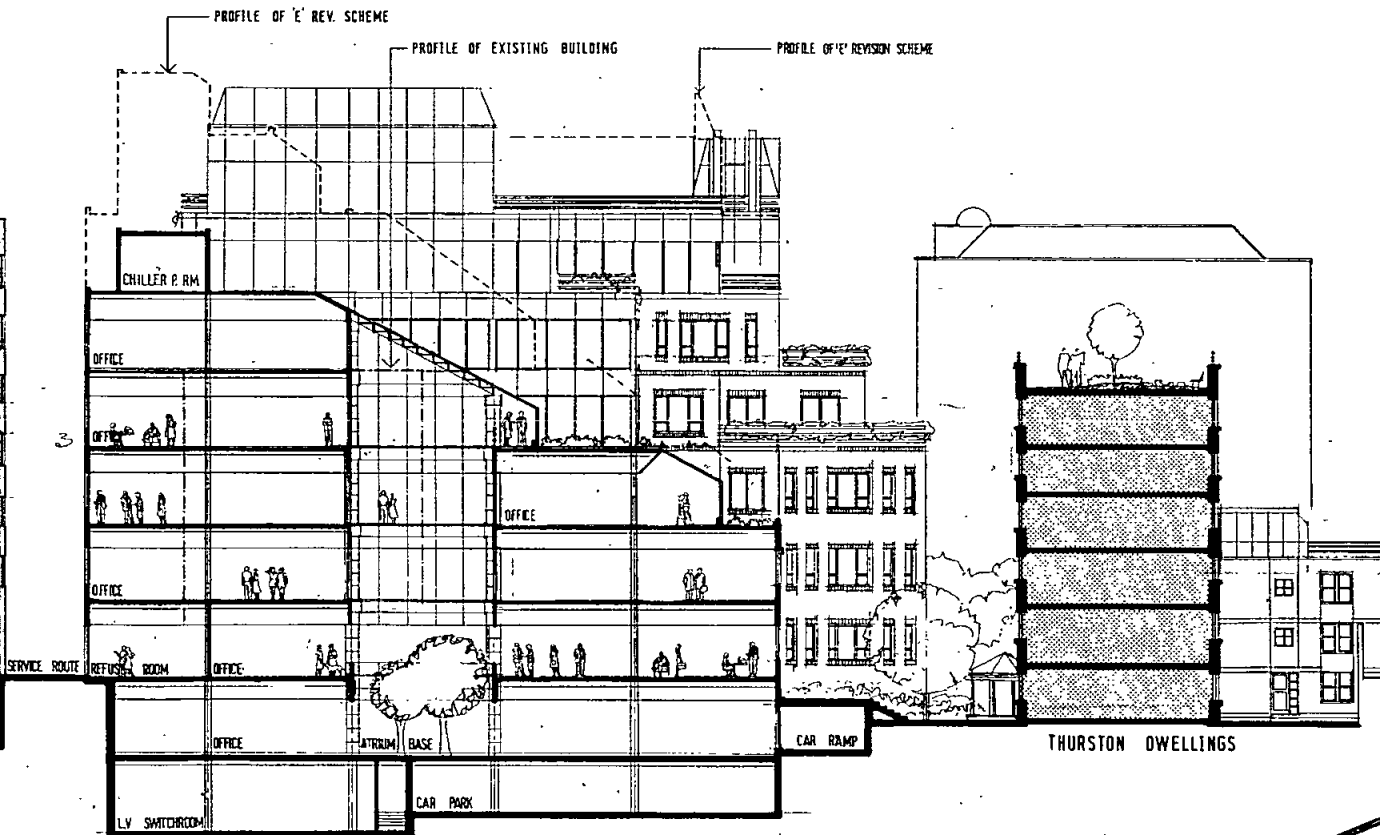
AVIATION HOUSE, WC2
 Roof Plan 1:200
 Sheppard Robson Architects 1193/P011(J)

9570392
 19502104
 9560232

8	53.750
6	49.800
5	45.050
4	40.950
3	36.850
2	32.750
1	28.650
HIGH HOLBORN	
LG	20.050
B	16.950



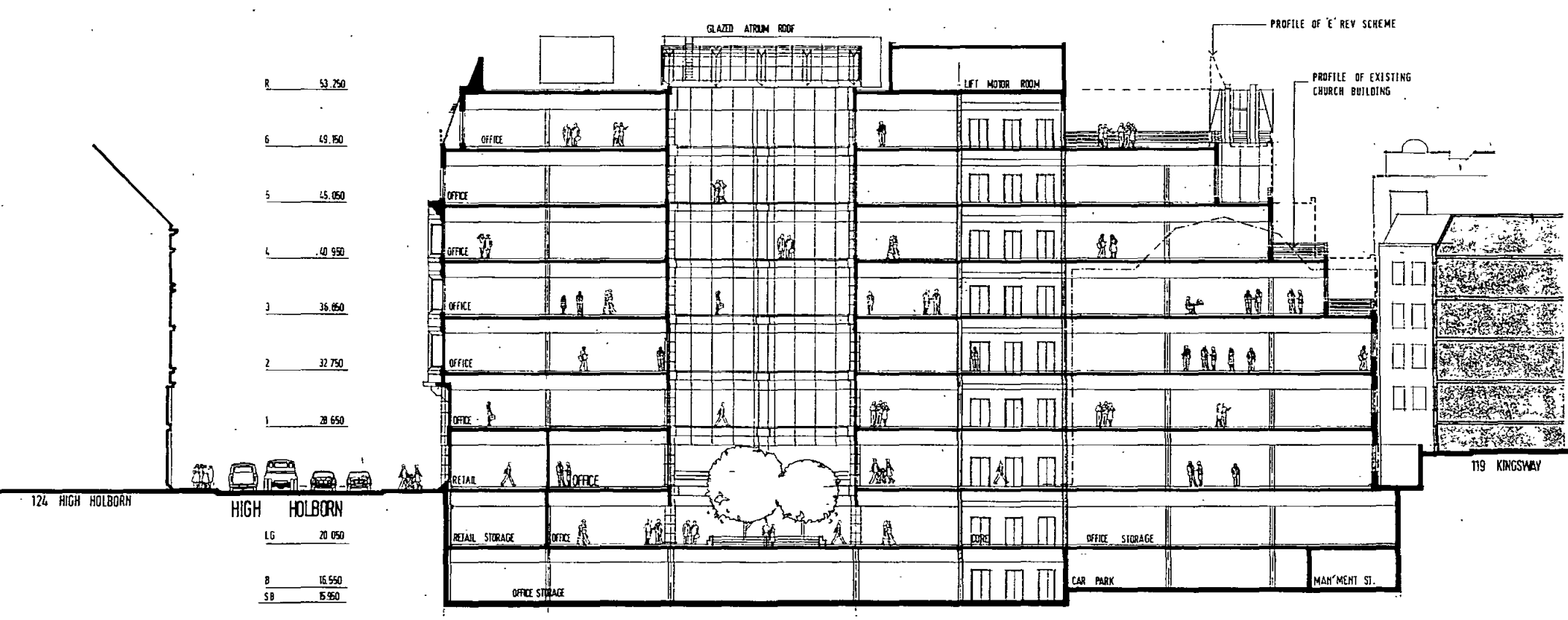
210 HIGH HOLBORN
 (SUBJECT TO SEPARATE
 PLANNING APPLICATION)



LONDON BOROUGH OF CAMDEN
 TOWN AND COUNTRY PLANNING ACTS
 - 2 MAY 1996
 PLANS APPROVED
 ON BEHALF OF THE COUNCIL

AVIATION HOUSE, WC2
 Section AA
 Sheppard Robson
 77 Parkway, NW1
 Architects
 1:200
 1193/P012 (U)

9570392
 9502104
 9560232



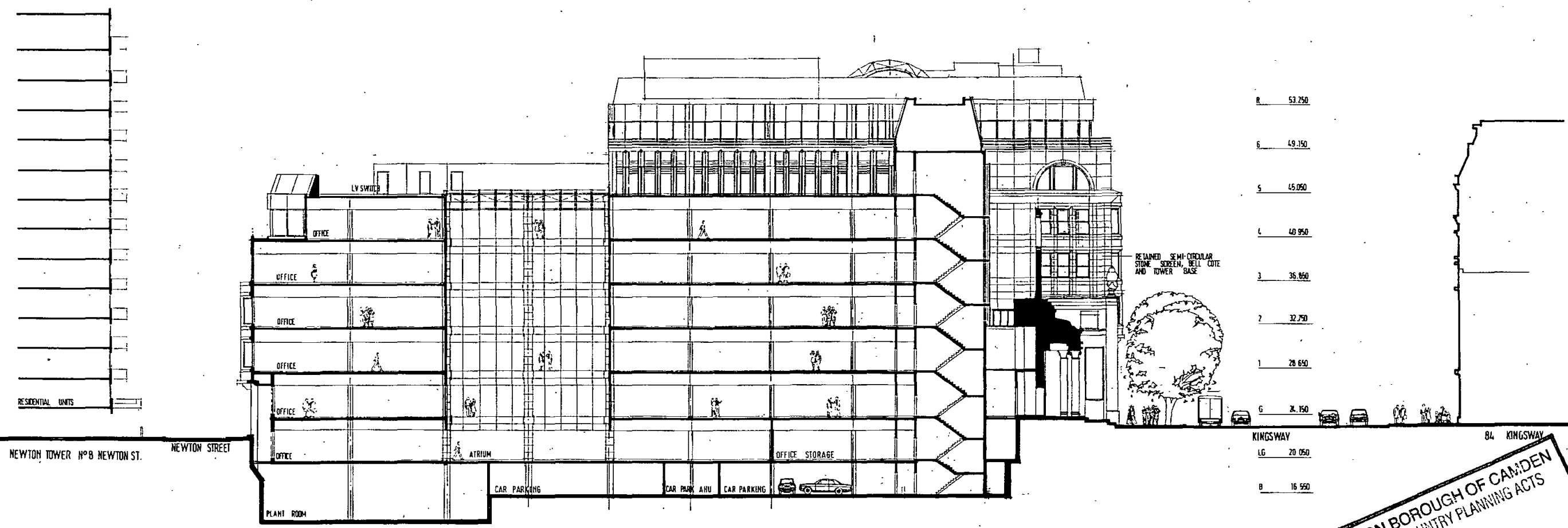
LONDON BOROUGH OF CAMDEN
 TOWN AND COUNTRY PLANNING ACTS
 - 2 MAY 1996
 PLANS APPROVED
 ON BEHALF OF THE COUNCIL

AVIATION HOUSE, WC2
 Section BB
 Sheppard Robson
 77 Parkway, NW1
 Architects
 1193/P013(J)
 1:200

9570392

19502.0

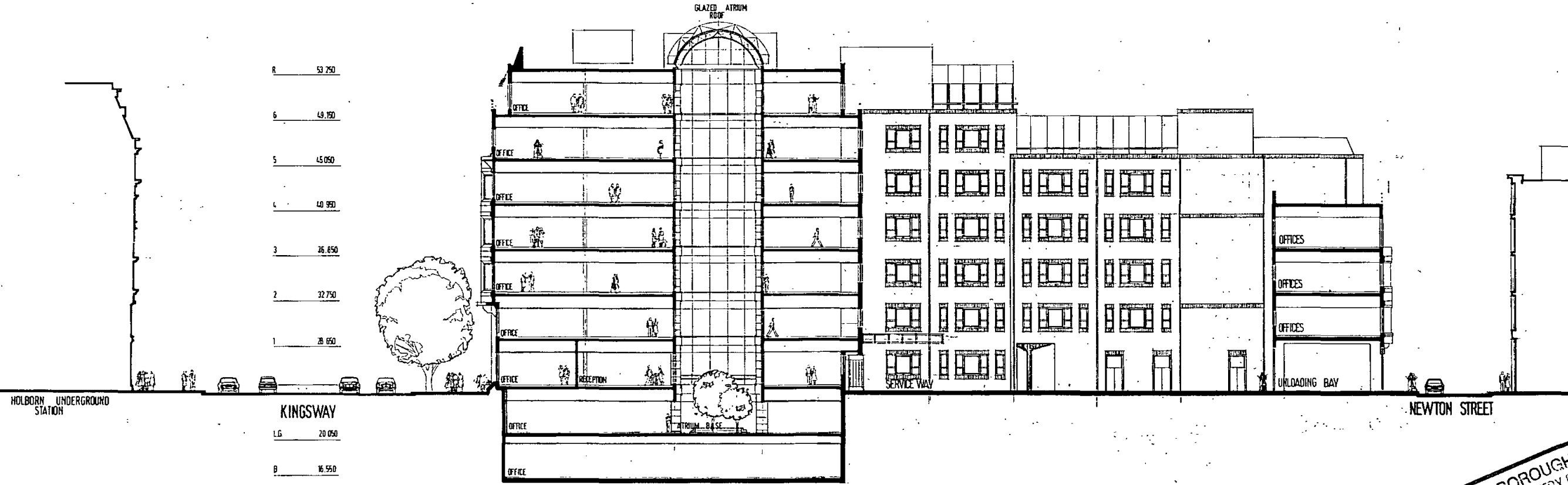
9560232



LONDON BOROUGH OF CAMDEN
 TOWN AND COUNTRY PLANNING ACTS
 - 2 MAY 1996
 PLANS
 ON BEHALF OF

AVIATION HOUSE, WC2
 Section CC
 Sheppard Robson
 77 Parkway, NW1
 Architects
 1:200
 1193/P014(J)

9570392
 9502104
 9560232



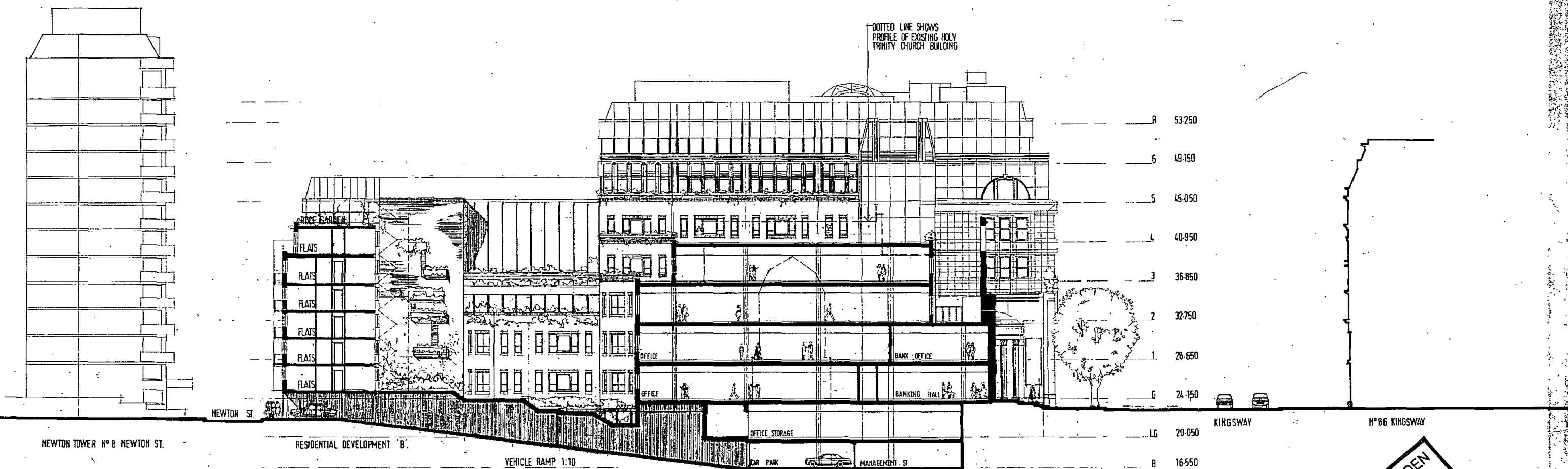
R	53.750
6	49.150
5	45.050
4	40.950
3	36.850
2	32.750
1	28.650
L.G.	20.050
B	16.550

LONDON BOROUGH OF CAMDEN
 TOWN AND COUNTRY PLANNING ACTS
 - 2 MAY 1996
 PLANS APPROVED
 ON BEHALF OF THE COUNCIL

AVIATION HOUSE, WC2
 Section DD
 1:200
 Sheppard Robson
 77 Parkway, NW1
 Architects
 1193/P015(J)

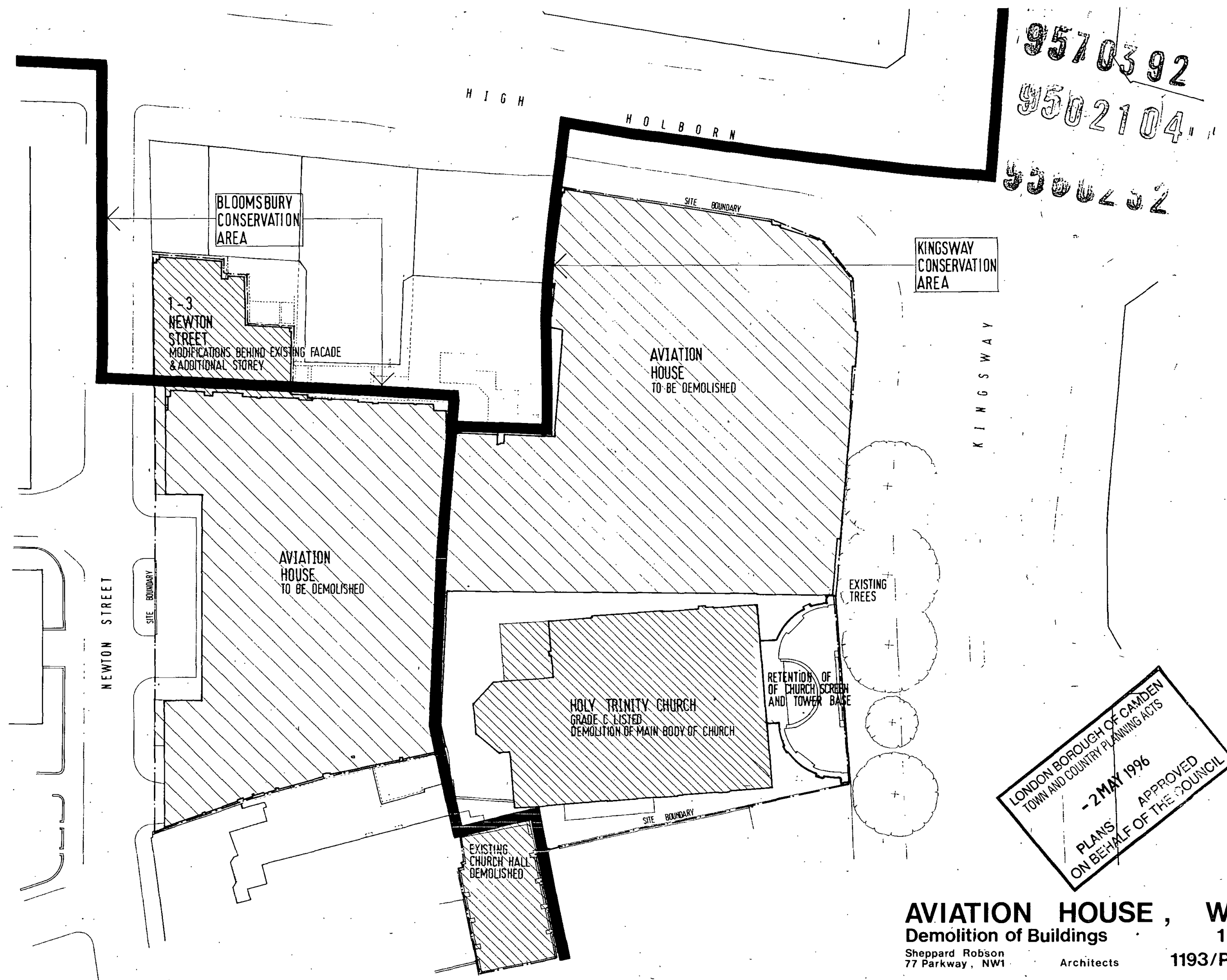
b. 9570392
9502104

9560282



LONDON BOROUGH OF CAMDEN
TOWN AND COUNTRY PLANNING ACTS
- 2 MAY 1996
PLANS APPROVED
ON BEHALF OF THE COUNCIL

AVIATION HOUSE, WC2
South Elevation 1:200
Sheppard Robson Architects 1193/P019(J)
77 Parkway, NW1

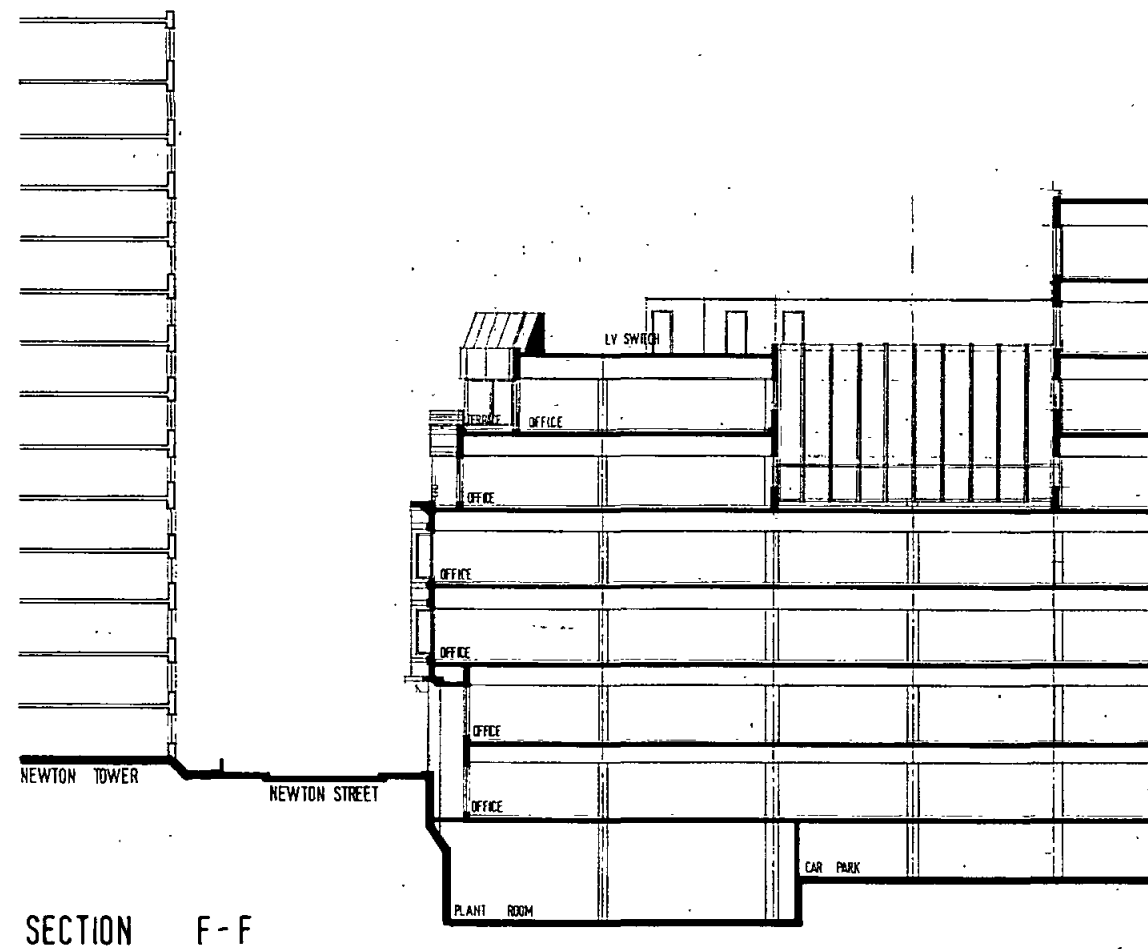


9570392
 9502104
 9500202

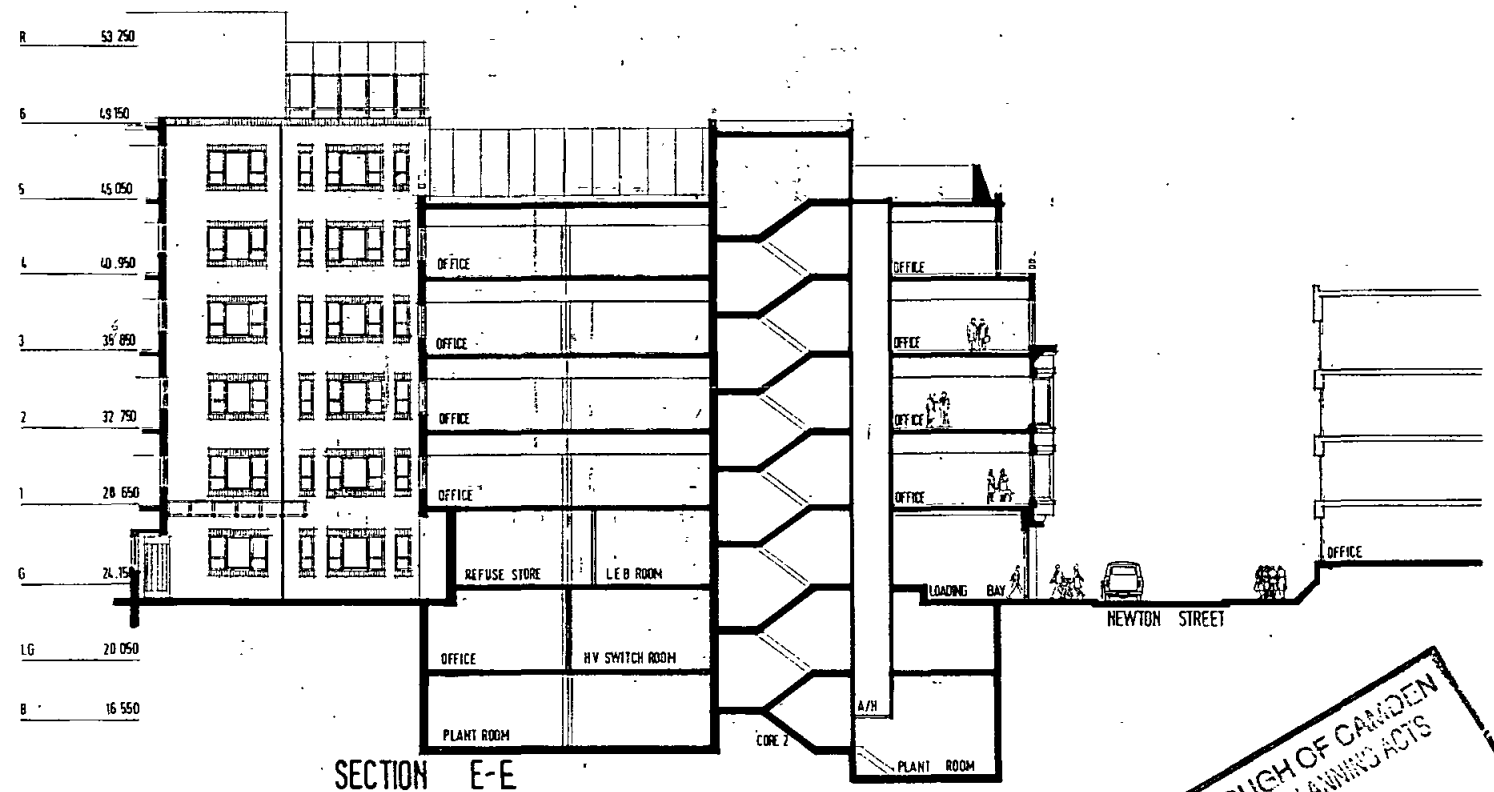
LONDON BOROUGH OF CAMDEN
 TOWN AND COUNTRY PLANNING ACTS
 - 2 MAY 1996
 PLANS APPROVED
 ON BEHALF OF THE COUNCIL

AVIATION HOUSE , WC2
 Demolition of Buildings 1:200
 Sheppard Robson Architects 1193/PO21(J)

9570392
 021040
 950202



SECTION F-F



SECTION E-E

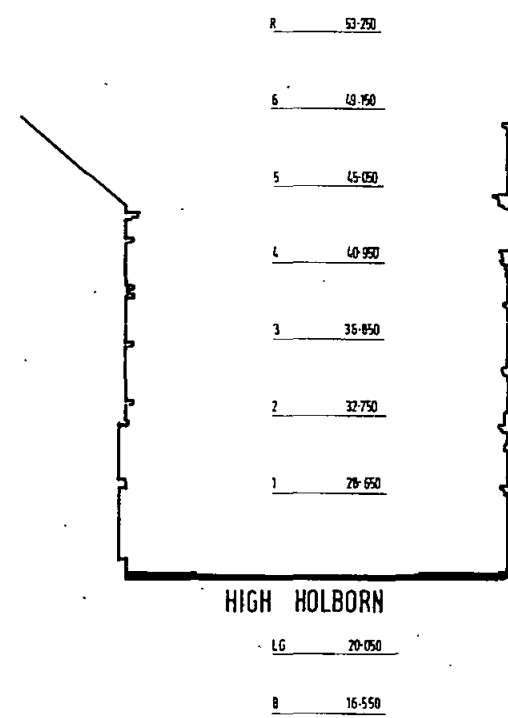
LONDON BOROUGH OF CAMDEN
 TOWN AND COUNTRY PLANNING ACTS
 - 2 MAY 1996
 PLANS APPROVED
 ON BEHALF OF THE COUNCIL

AVIATION HOUSE, WC2
 Section EE, FF 1:200
 Sheppard Robson Architects 1193/P023(J)

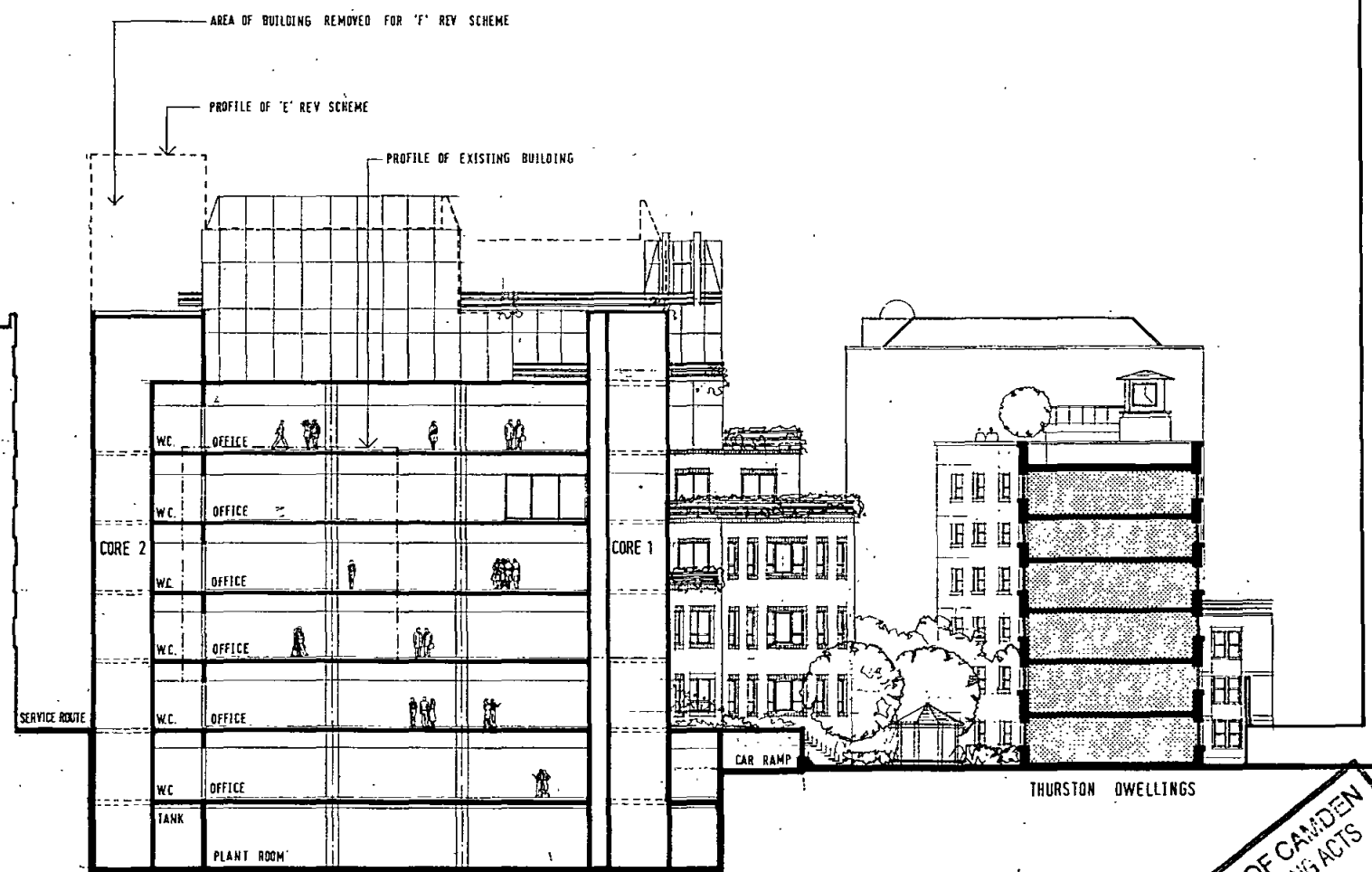
9570392

0502104

15500402



210 HIGH HOLBORN



LONDON BOROUGH OF CAMDEN
 TOWN AND COUNTRY PLANNING ACTS
 - 2 MAY 1996
 PLANS
 ON BEHALF OF THE COUNCIL

AVIATION HOUSE, WC2
 Section GG 1:200
 Sheppard Robson
 77 Parkway, NW1 Architects 1193/P029