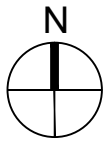


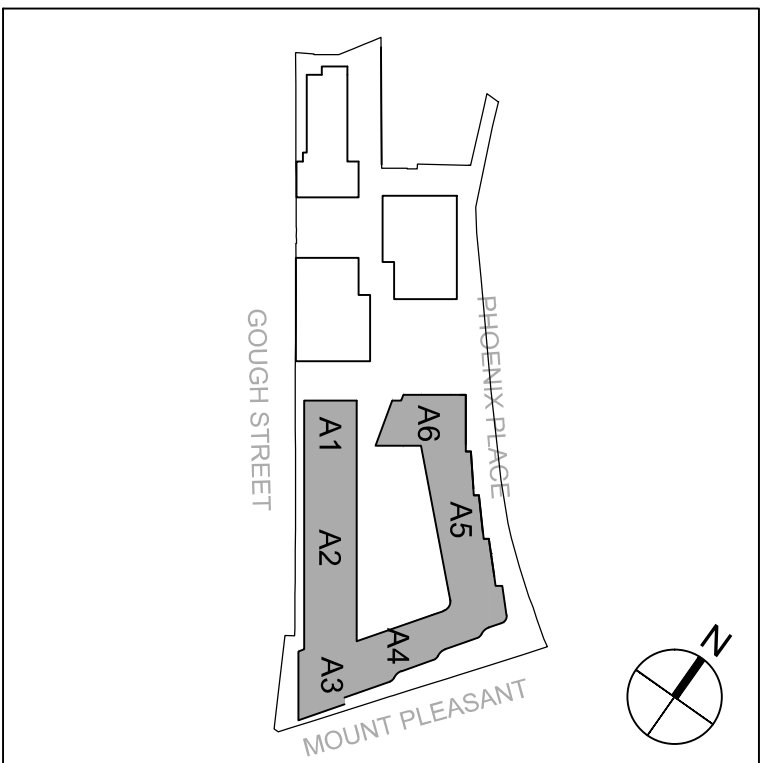
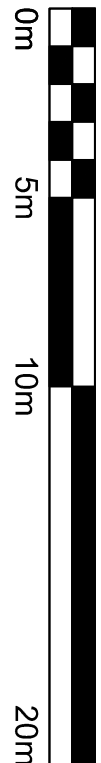
Contractors and consultants are not to scale dimensions from this drawing



Reproduced by permission of Ordnance Survey on behalf of HMISO  
© Crown Copyright and database right 2008 All rights reserved  
Ordnance Survey Licence number: AL 1000 28352 Broadway Malayan Limited

The survey information shown on this drawing is based on a topographical survey prepared by a third party and Broadway Malayan Limited accept no responsibility for the accuracy or completeness of the survey.

Please note: Drawings to read in conjunction with the associated Design & Access Statement, associated documents and landscape information



Application Area

Revision	Date	Description
P03	18-05-15	Non-Material Amendments
P02	18-05-14	Non-Material Amendments
P01	18-02-09	Non-Material Amendments

## BroadwayMalayan BM

Eastgate, 2 Castle Street  
Castletide, Manchester  
M3 4LZ

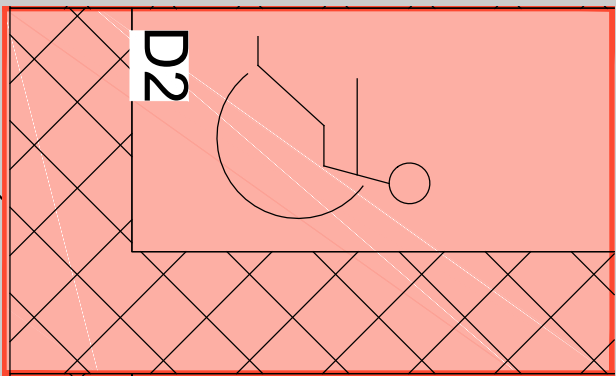
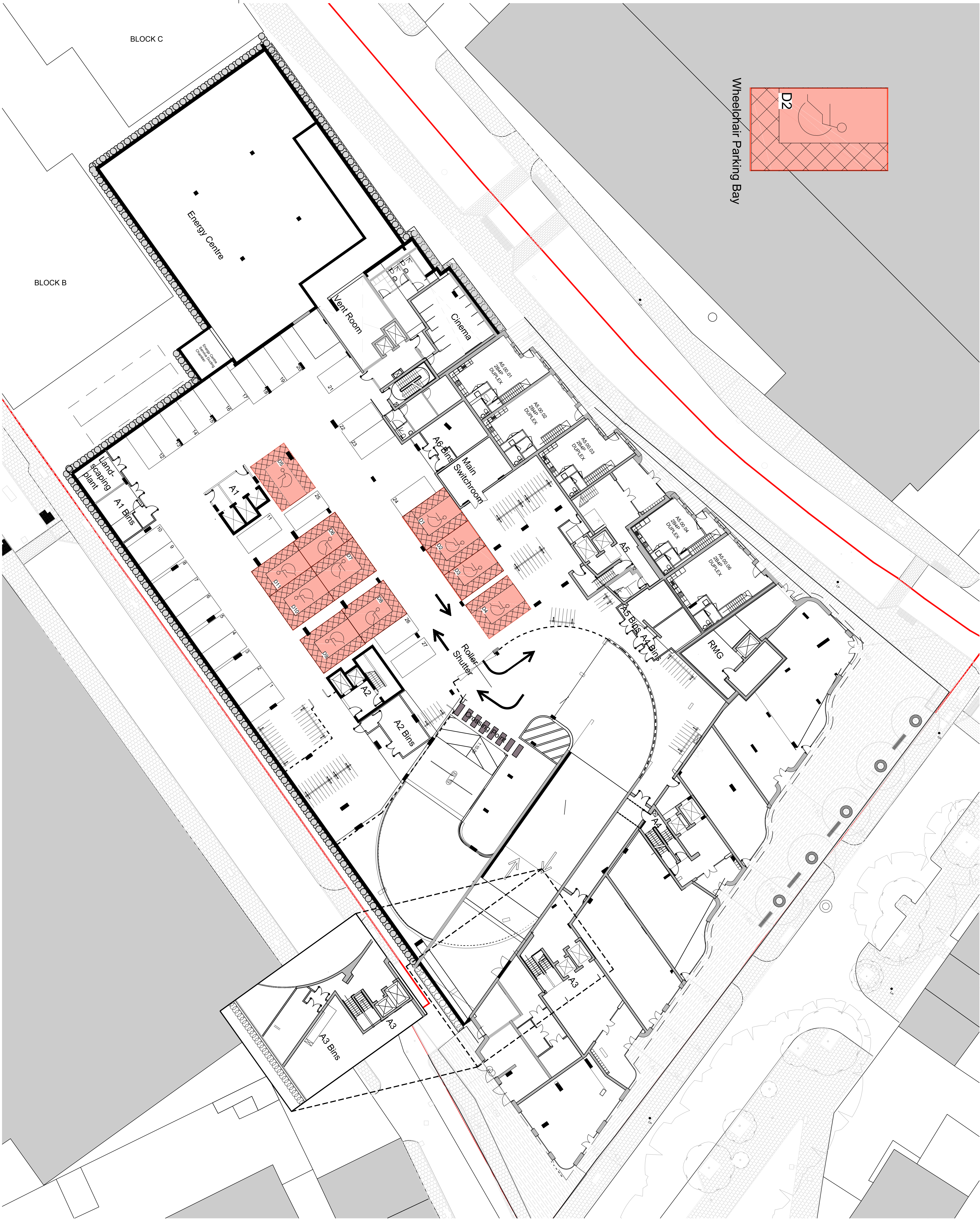
T: +44 (0)161 819 2277  
E: +44 (0)161 819 2332  
E: [info@broadwaymalayan.com](mailto:info@broadwaymalayan.com)  
[www.broadwaymalayan.com](http://www.broadwaymalayan.com)

Client  
Taylor Wimpey Central London  
Project  
RMG Mount Pleasant  
Phoenix Place Plot P1  
Description  
Block A Proposed Lower Ground Level  
Level G00  
Disable Parking Provision

### NON-MATERIAL AMENDMENTS

Status  
Scale  
1:200@A1  
Job Number  
32875  
Drawing Number  
P-03-G00-A  
Date  
FEB 18  
Revision  
P03

Original size 100mm @ A1 Copyright Broadway Malayan Limited



Wheelchair Parking Bay

BLOCK C

BLOCK B