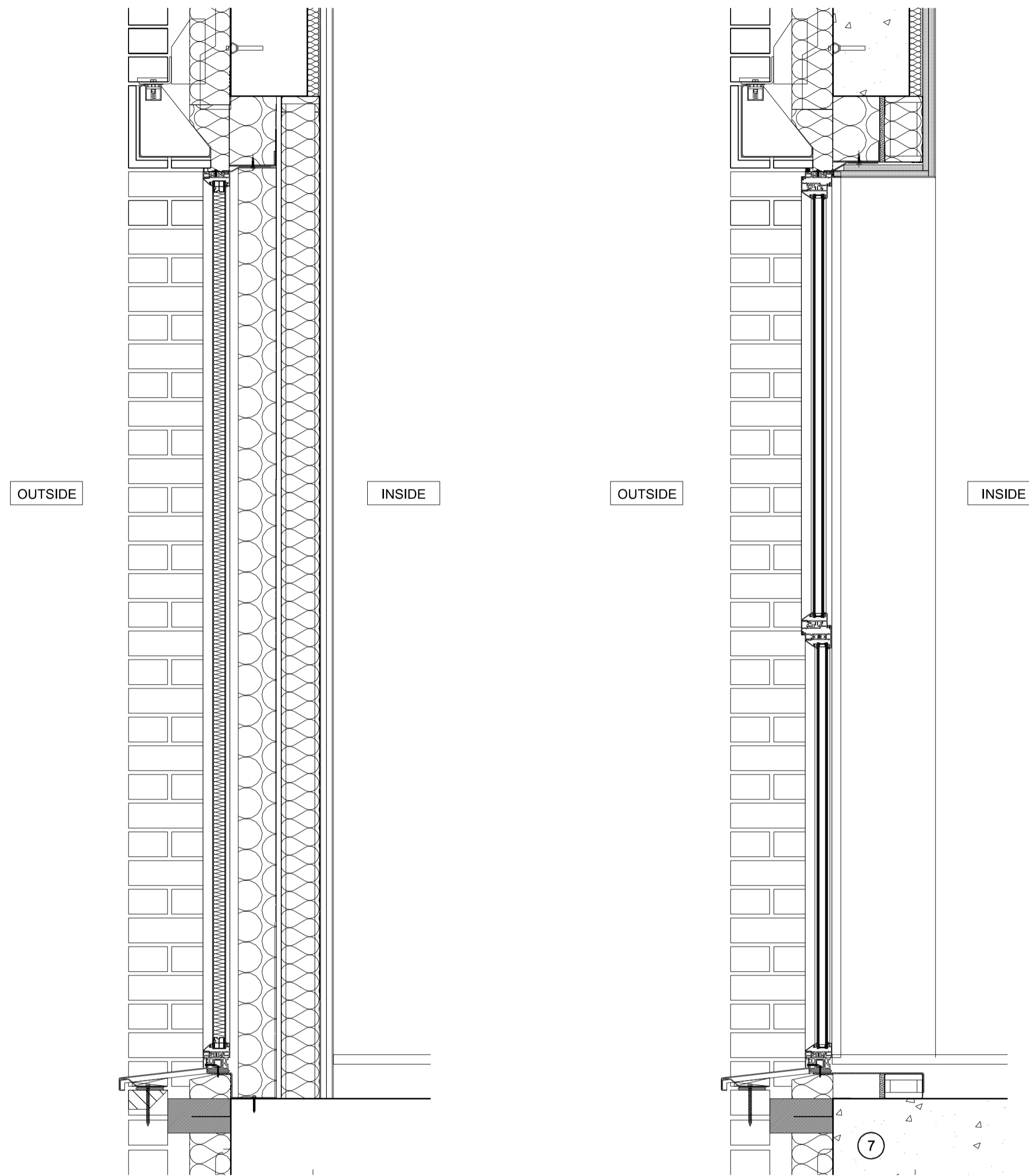
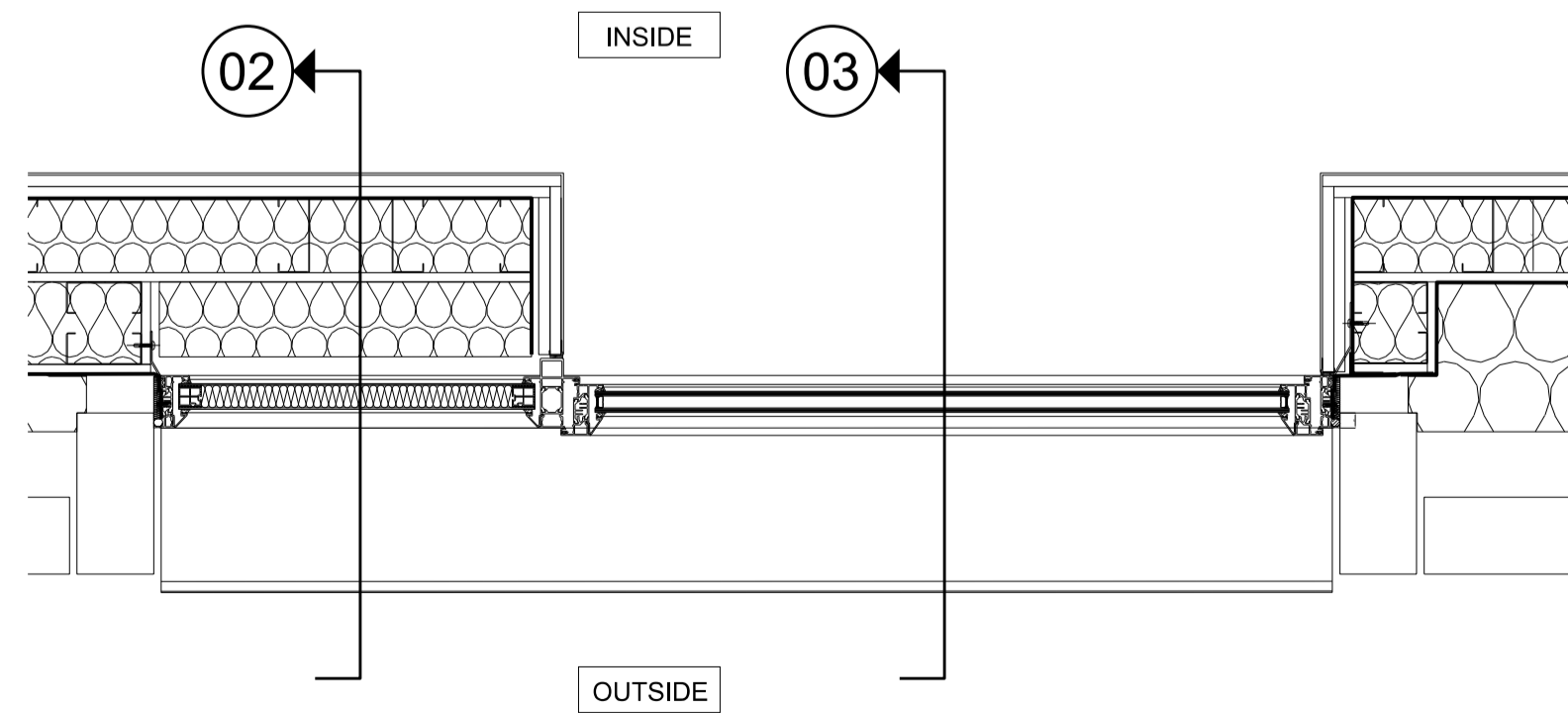


01 Elevation of Typical Operable Aluminium Window with Side Infill Panel
1:10



02 Section Through Typical Side Infill Panel
1:10

03 Section Through Typical Aluminium Door
1:10



04 Plan of Typical Operable Aluminium Window with Side Infill Panel
1:10

Disclaimer
Do not scale from this drawing.
Check all dimensions on site before fabrication or setting out.
This document is copyright and may not be reproduced without permission of the owner.

Notes
For structure, please refer to Structural Engineer's design & specification.
Below ground structure is indicative only. Stairs structure is indicative only. Allow for movement joints as required.
Slabs are shown in absolute location and deflection & tolerances are not included on drawings. For deflection & tolerances please refer to Structural Engineer's design & specification.
For MEP please refer to M&E Engineer's design & specification.
For external spaces and landscape design, please refer to Landscape Designer's design & specification.
For Interface along site boundary please see Architect's boundary designs in accordance with Party Wall agreement.

Key

00	Issue for approval	02.05.18	RPP	RPP
Rev	Notes	Date	Dwn	Iss

Consultants
Structural Engineer: AKT II
M&E Engineer: Scotch Partners
Planning: DP9
Daylight - Sunlight/ROL: Point 2 Surveyors
Cost: Core 5
Building Control: Bureau Veritas
Fire: JGA
Landscape Designer: Andy Sturgeon



Robin Partington & Partners
Castletwood
35 New Oxford Street
London
WC1A 1DG
+44 20 7419 3500
mail@rplondon.com
www.rplondon.com

Client
Londonewcastle
The Courtyard Building
17 Evelyn Yard
London W1T 1AU

Project			
Parker House			
Drawing Title			
Typical Door / Window Details Prepared for Camden Council			
Scale		Drawn By	
1:2 @ A1	1:4 @ A3	RPP	RPP
CONSTRUCTION			
Project No.	Drawing No.	Revision	
16002	A_SK_180502_d	00	