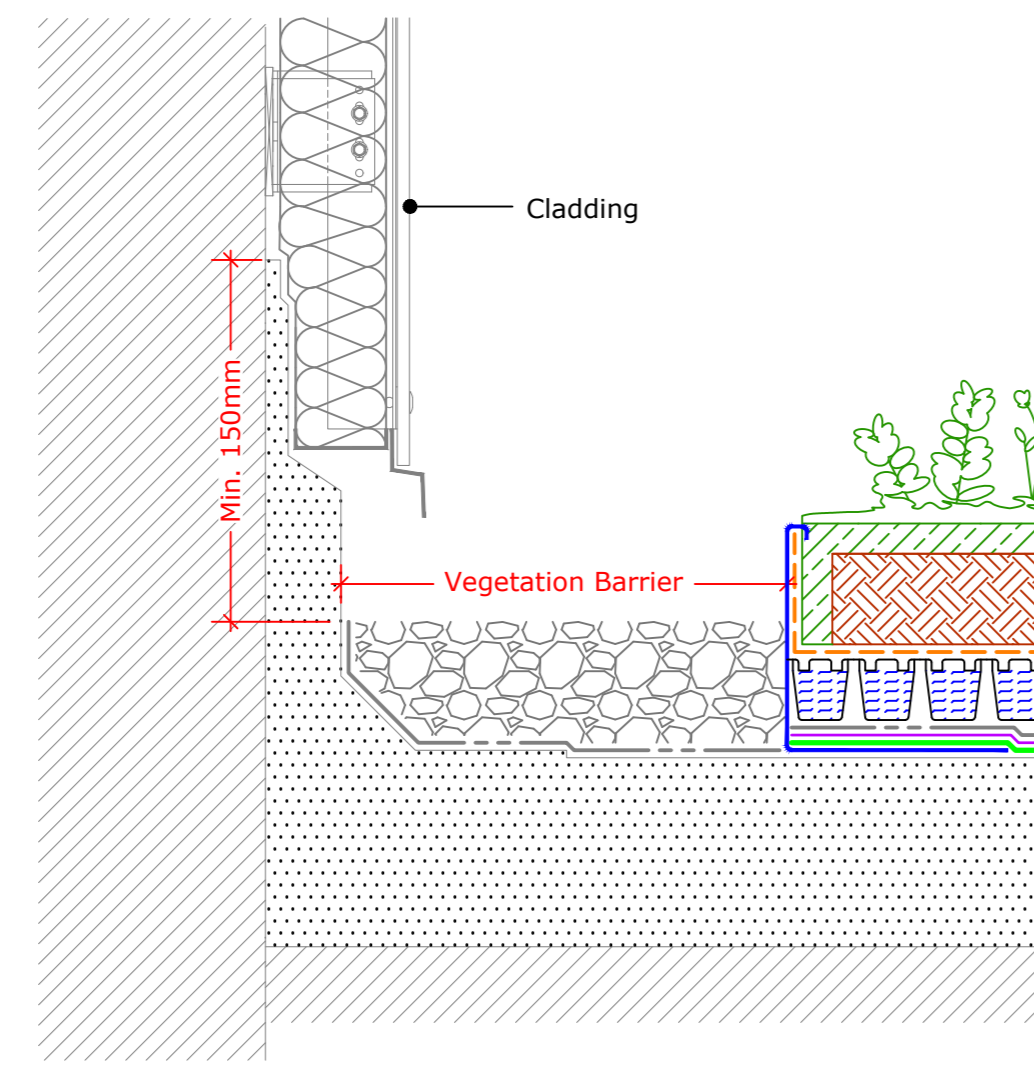
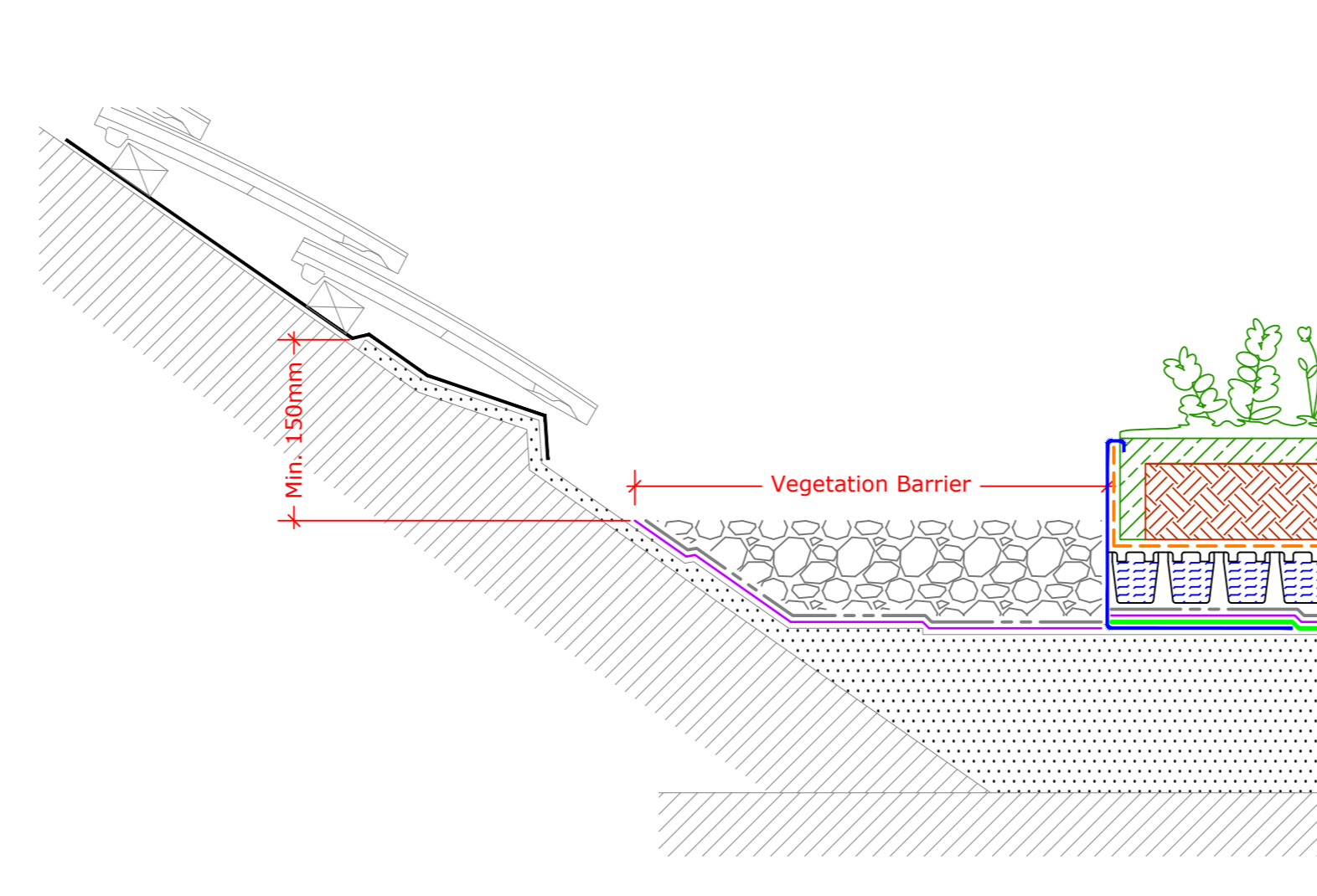


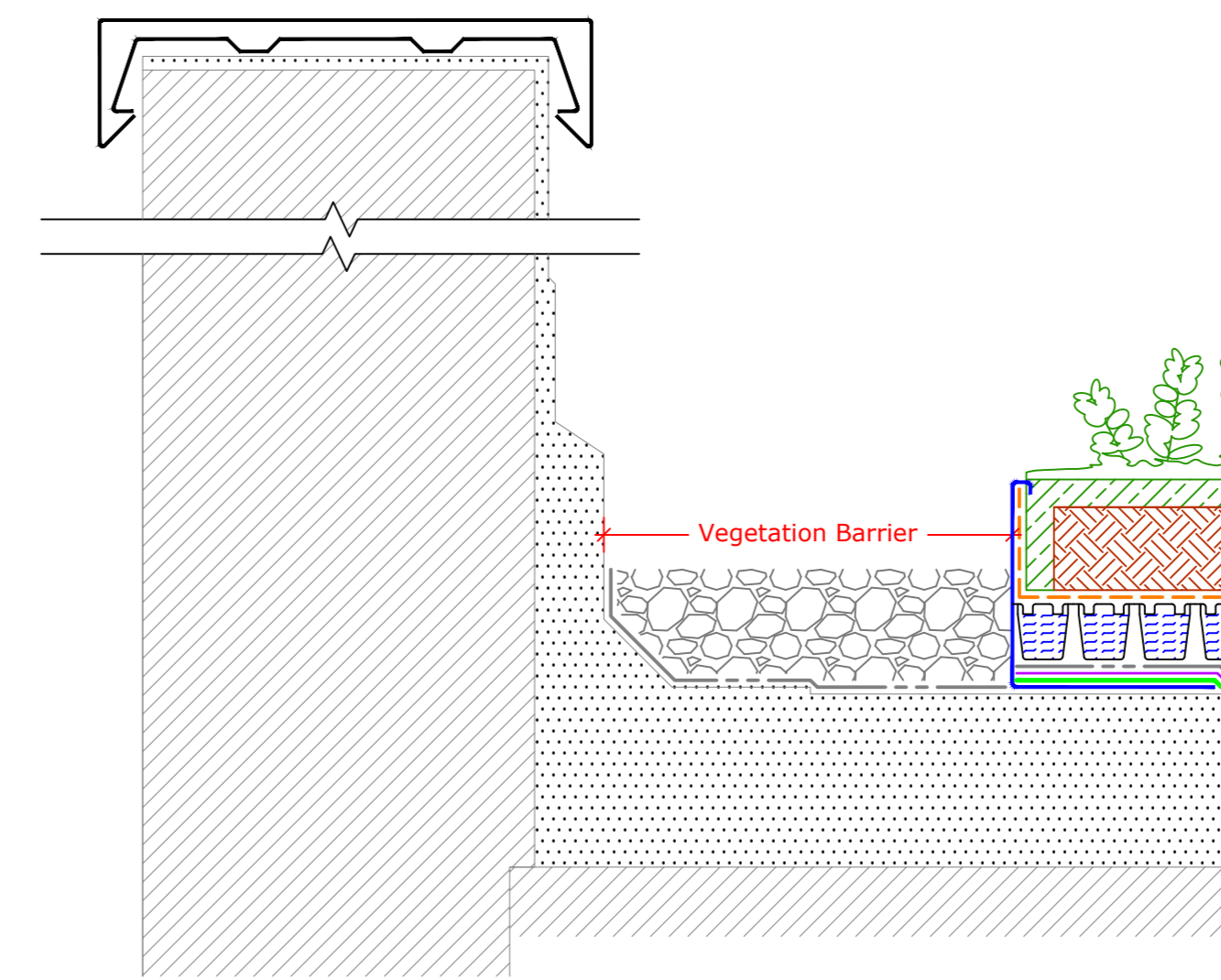
Upstand
(Drg.No: D0901/03-00W_0-4Deg_001-ExtInt_001)



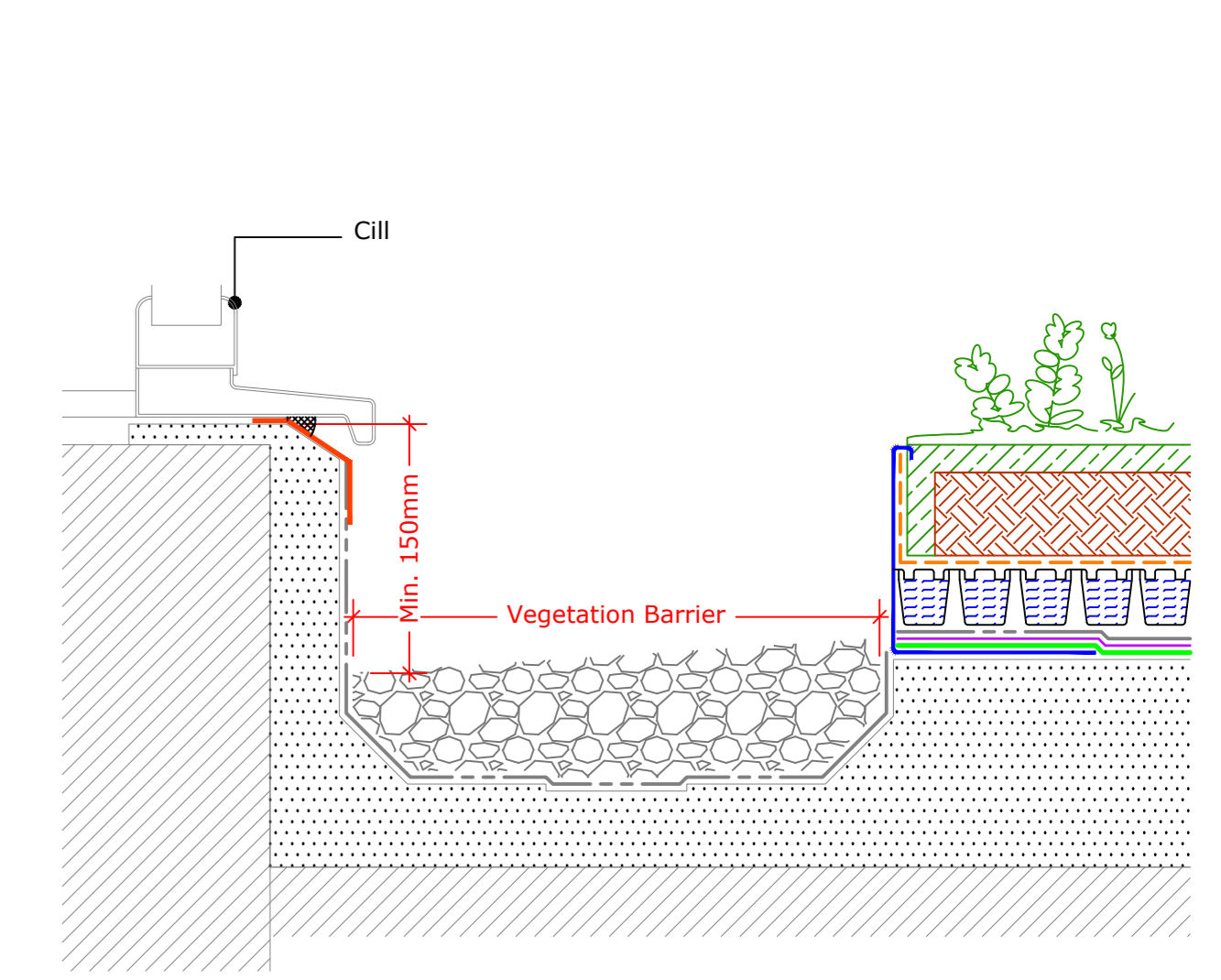
Upstand to Vertical Cladding or Slates/Tiles
(Drg.No: D0901/03-00W_0-4Deg_001-ExtInt_002)



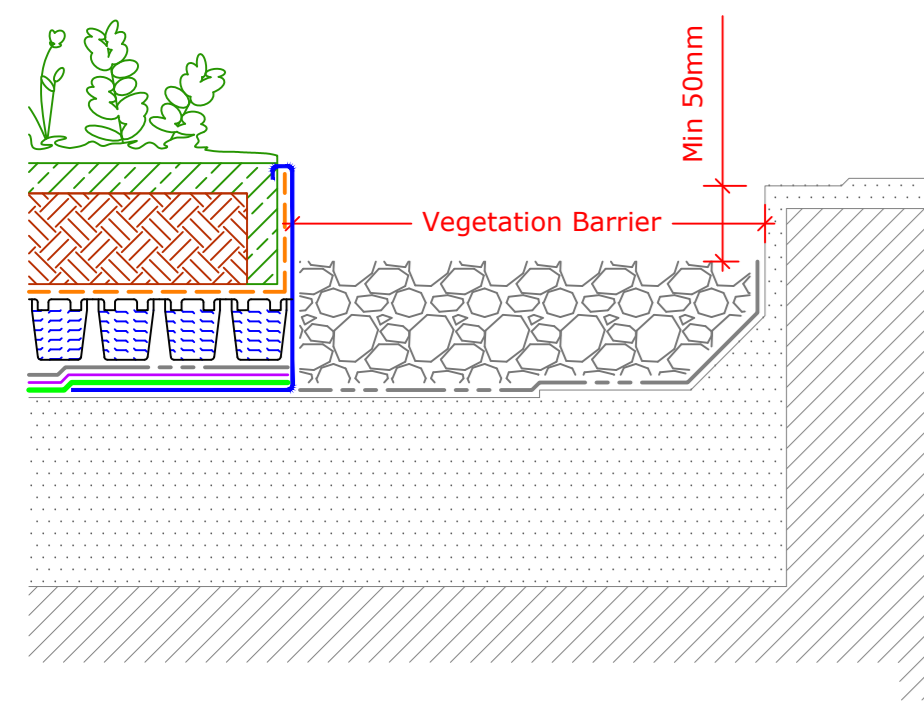
Upstand to Pitched Roof
(Drg.No: D0901/03-00W_0-4Deg_001-ExtInt_004)



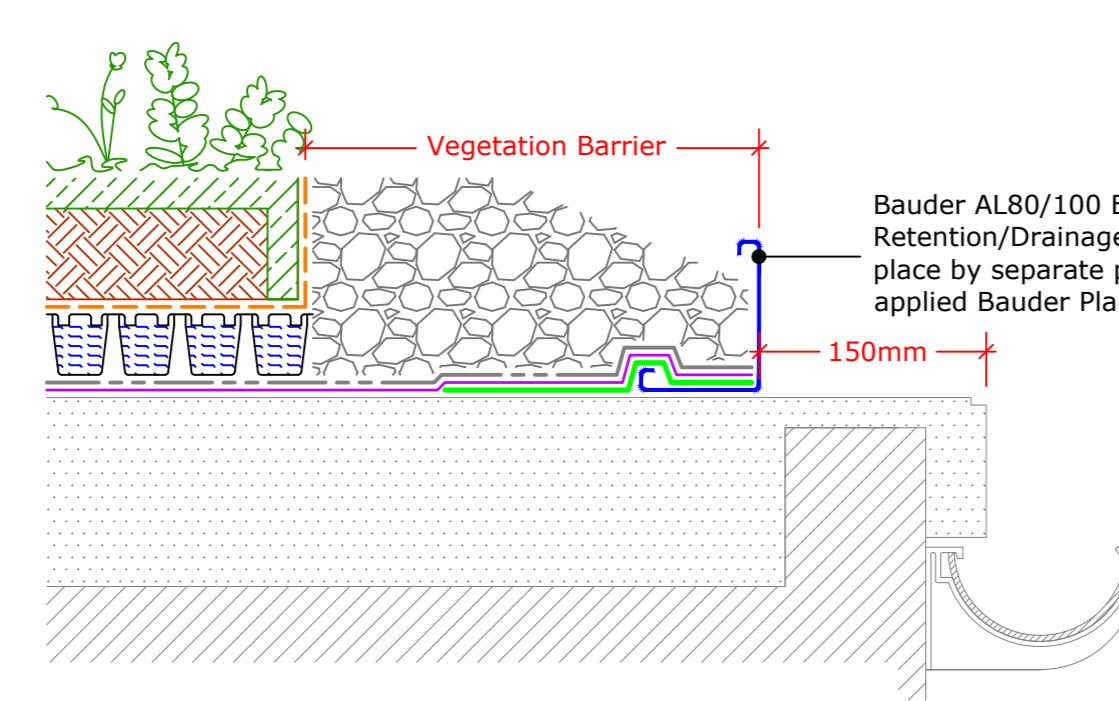
Parapet Upstand
(Drg.No: D0901/03-00W_0-4Deg_003-ExtInt_001)



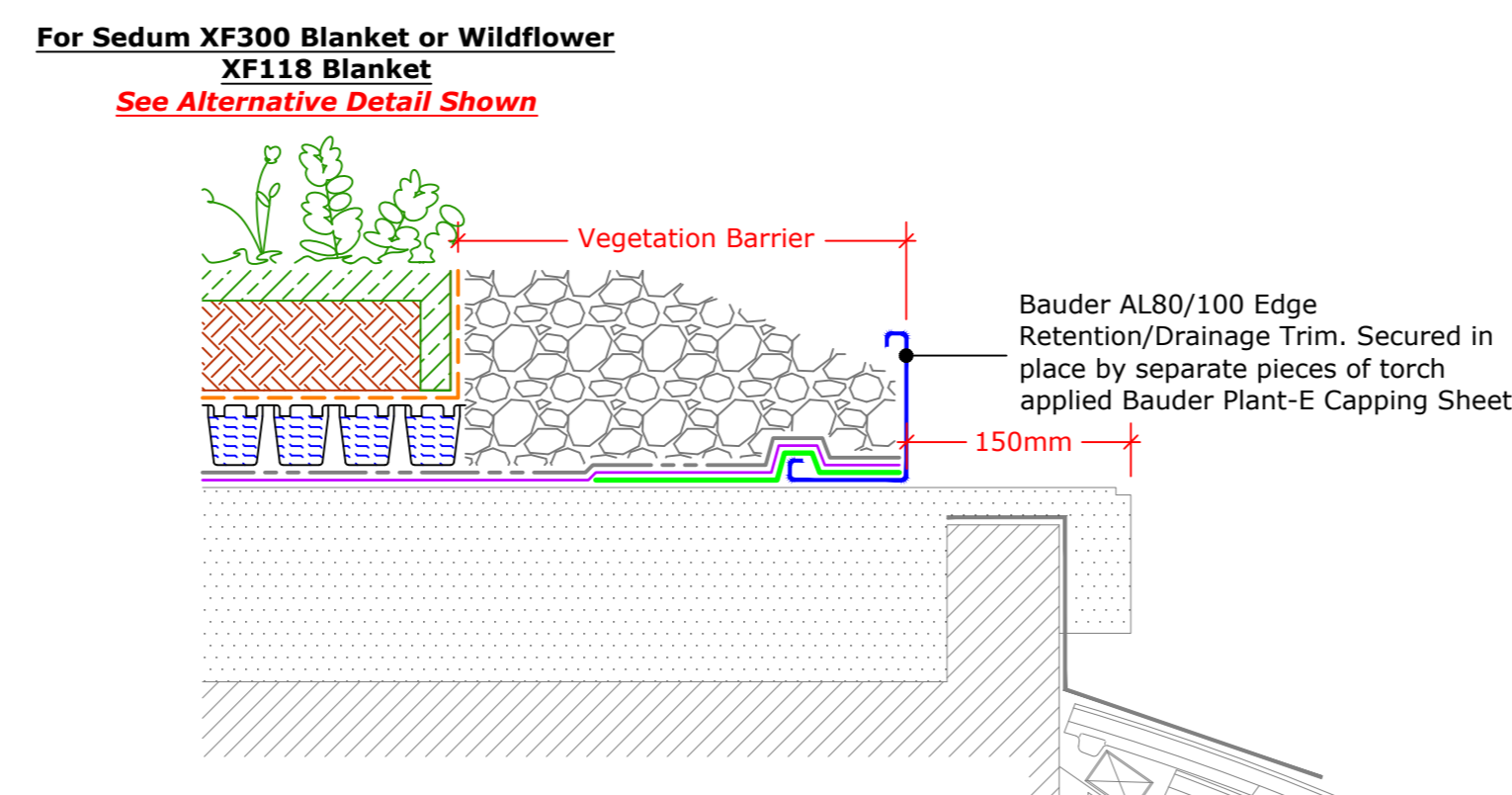
Internal Gutter to Clerestory Window
(Drg.No: D0901/03-00W_0-4Deg_006-ExtInt_004)



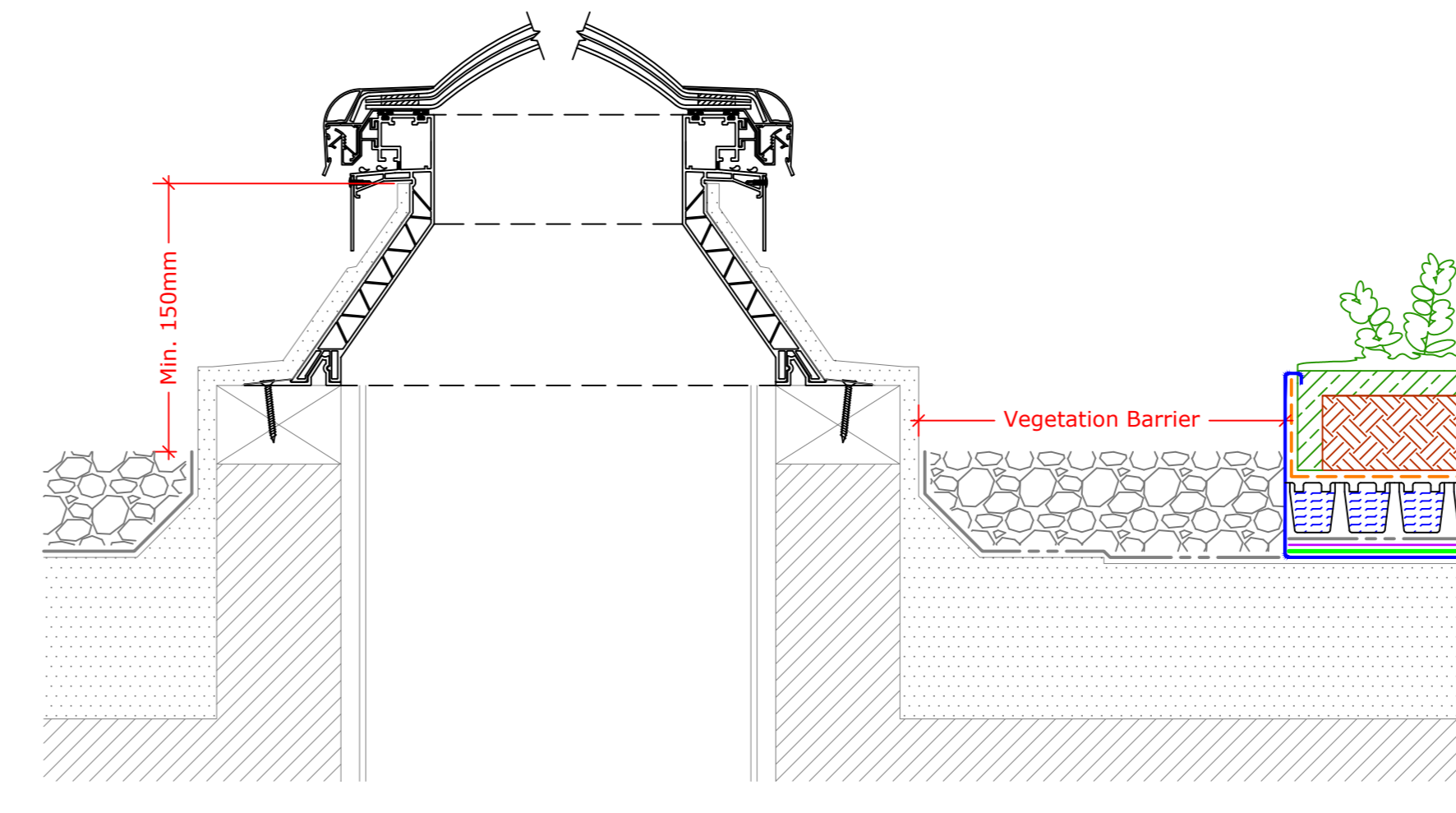
Perimeter Kerb
(Drg.No: D0901/03-00W_0-4Deg_002-ExtInt_001)



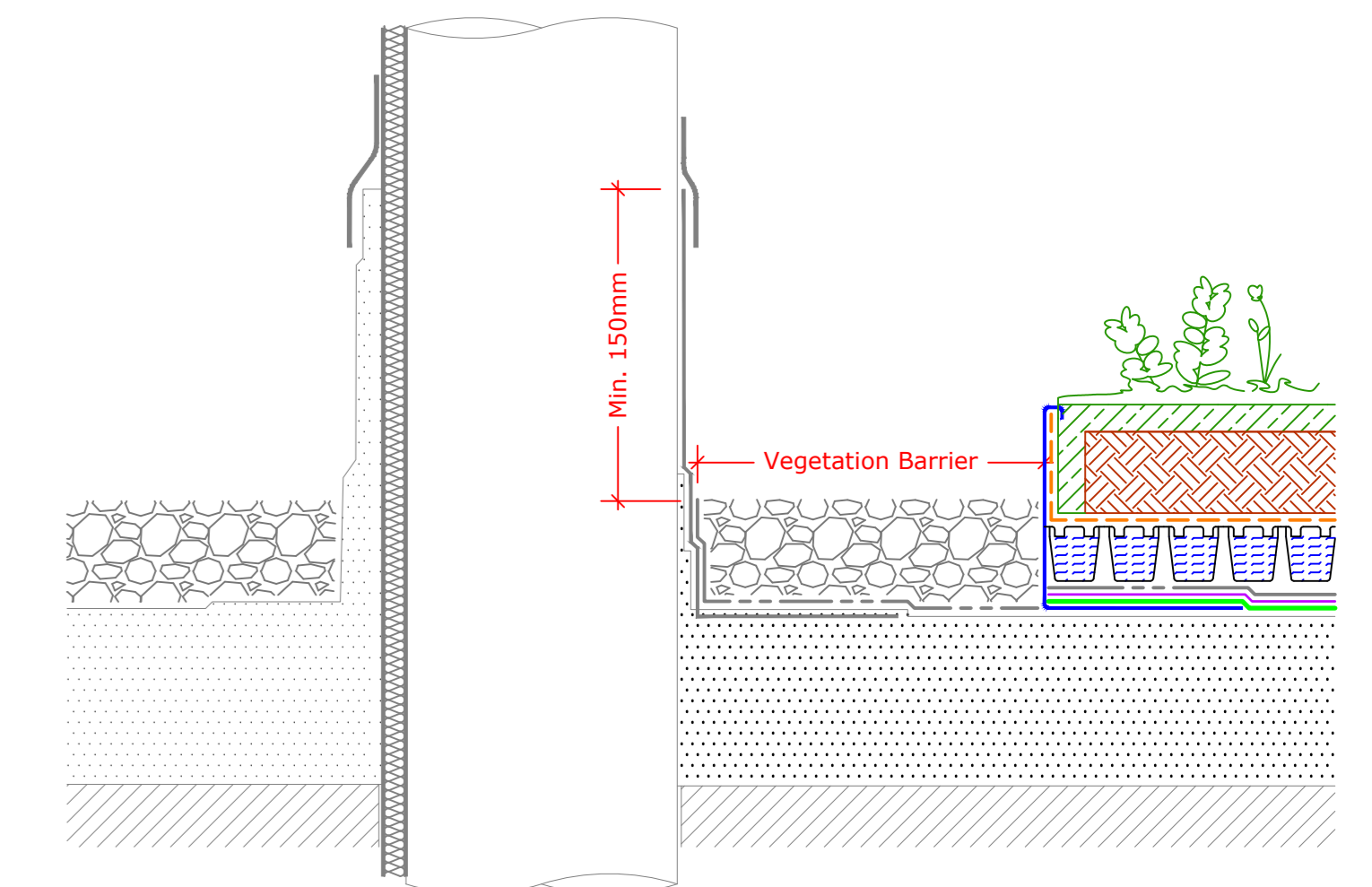
External Gutter
(Drg.No: D0901/03-00W_0-4Deg_006-ExtInt_005)



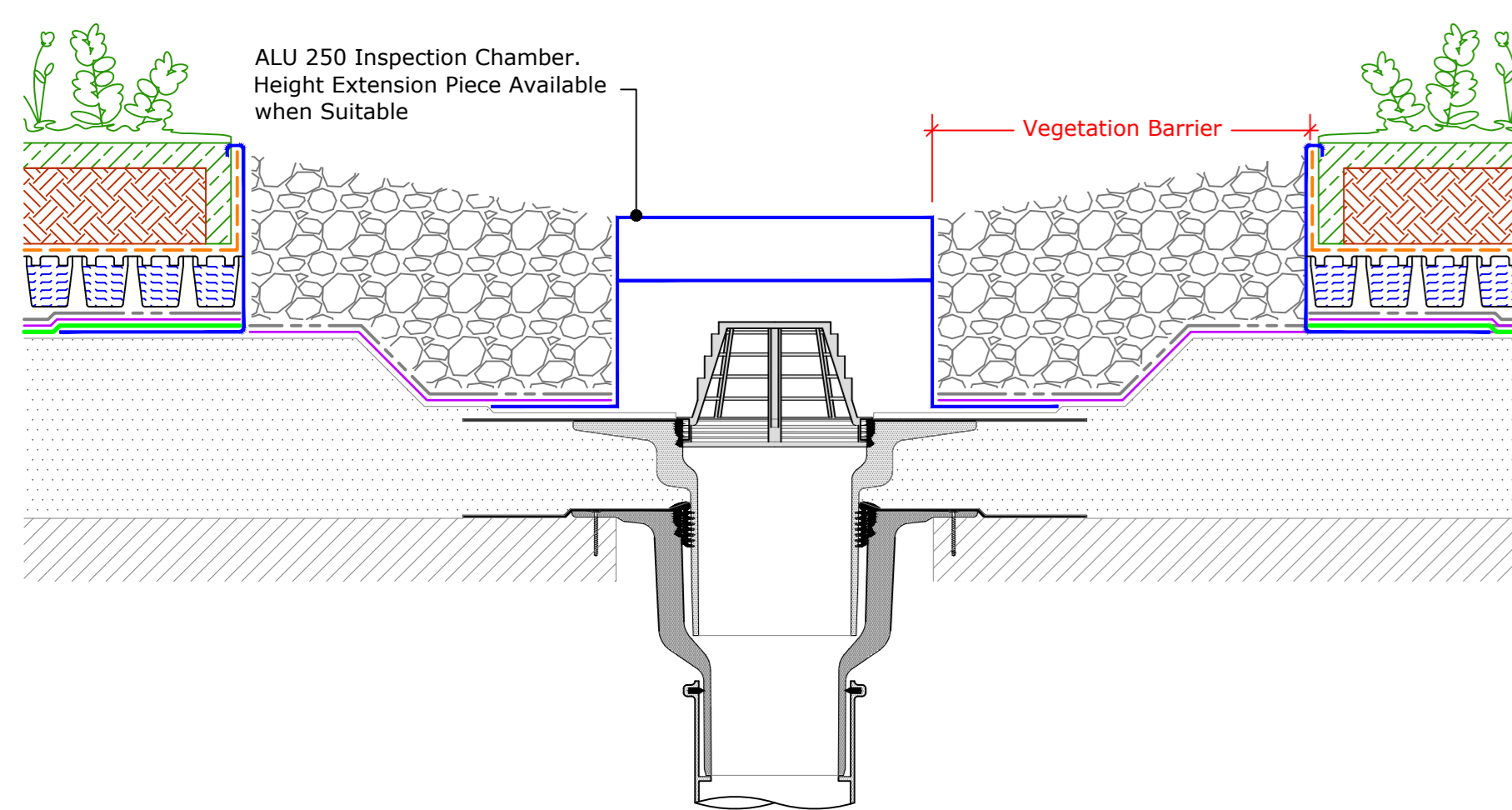
Detail to Mansard Roof
(Drg.No: D0901/03-00W_0-4Deg_006-ExtInt_006)



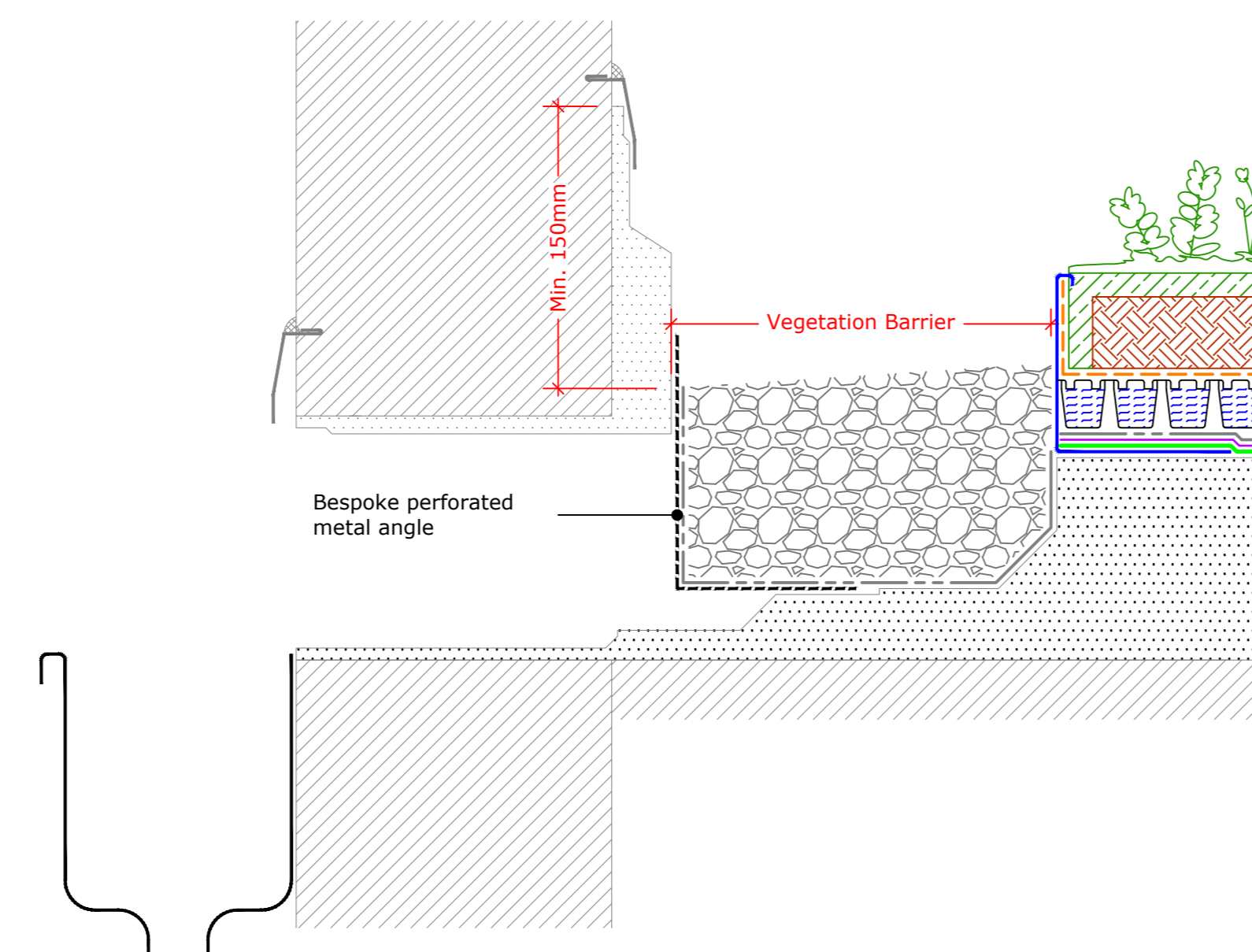
Upstand to Bauder Rooflight - Euroglaze
(Drg.No: D0901/03-00W_0-4Deg_008-ExtInt_001)



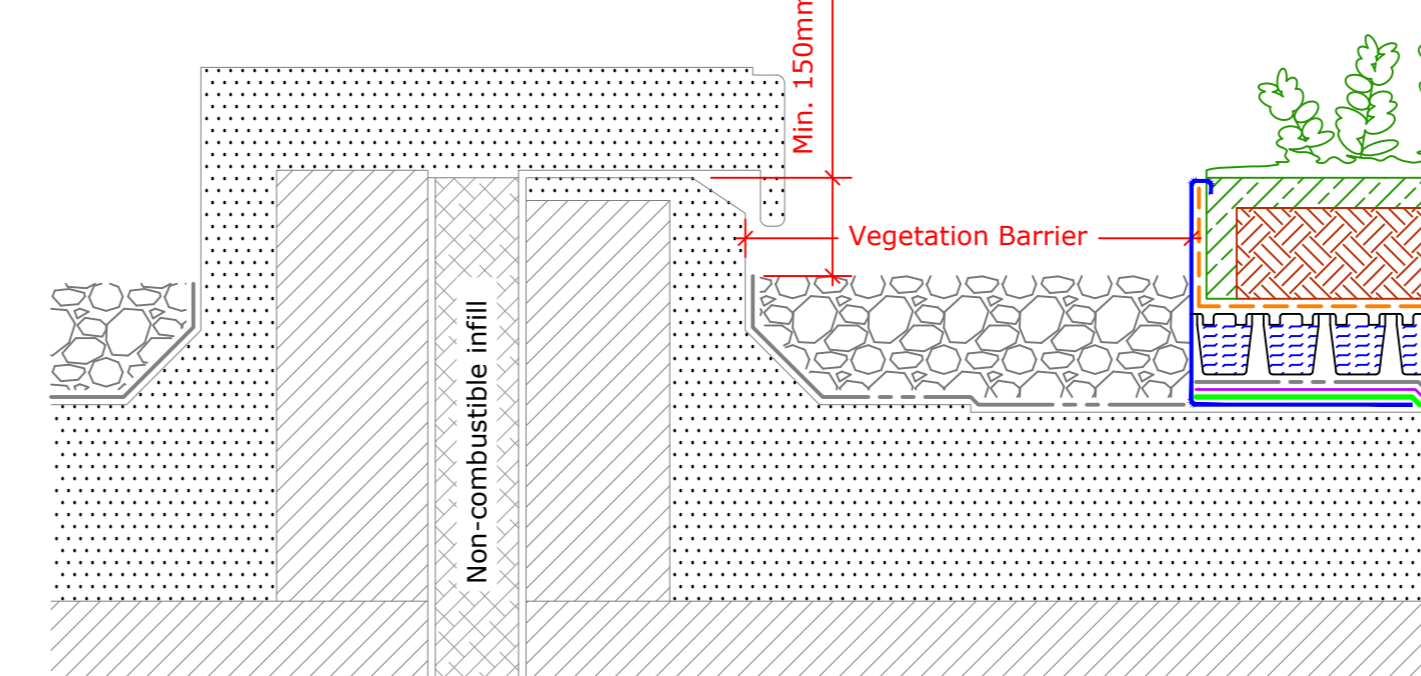
Upstand to Pipe
(Drg.No: D0901/03-00W_0-4Deg_007-ExtInt_002)



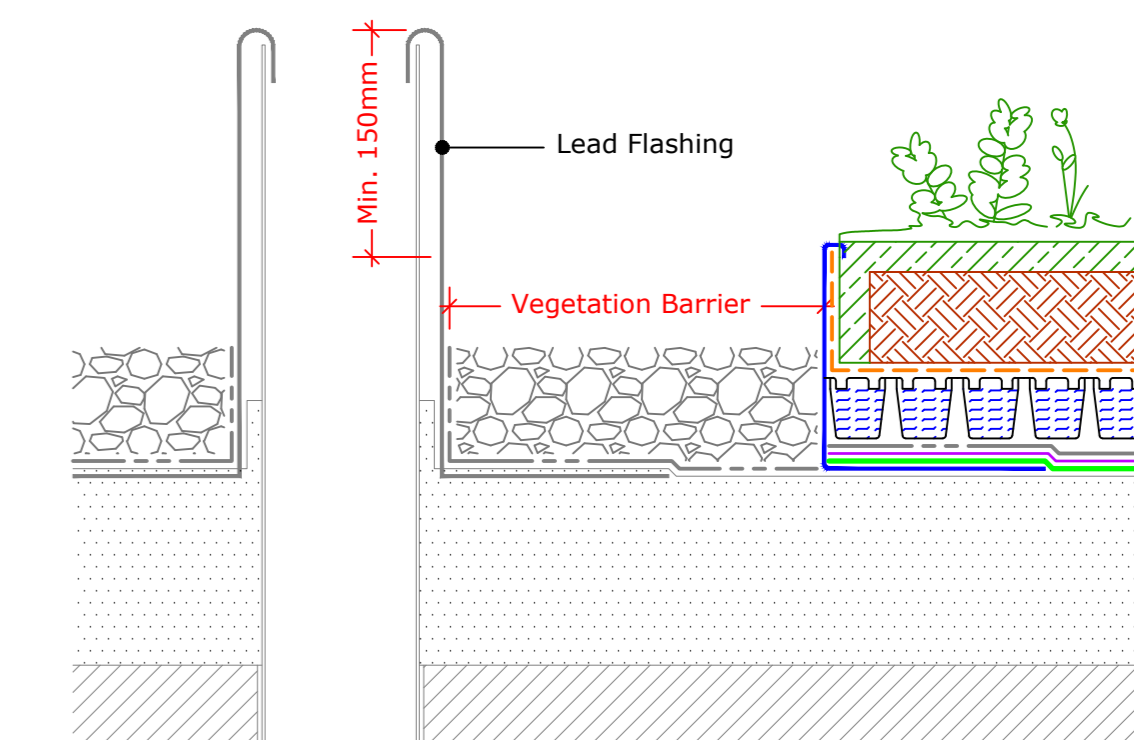
Bauder Outlet - Compact
(Drg.No: D0901/03-00W_0-4Deg_006-ExtInt_001)



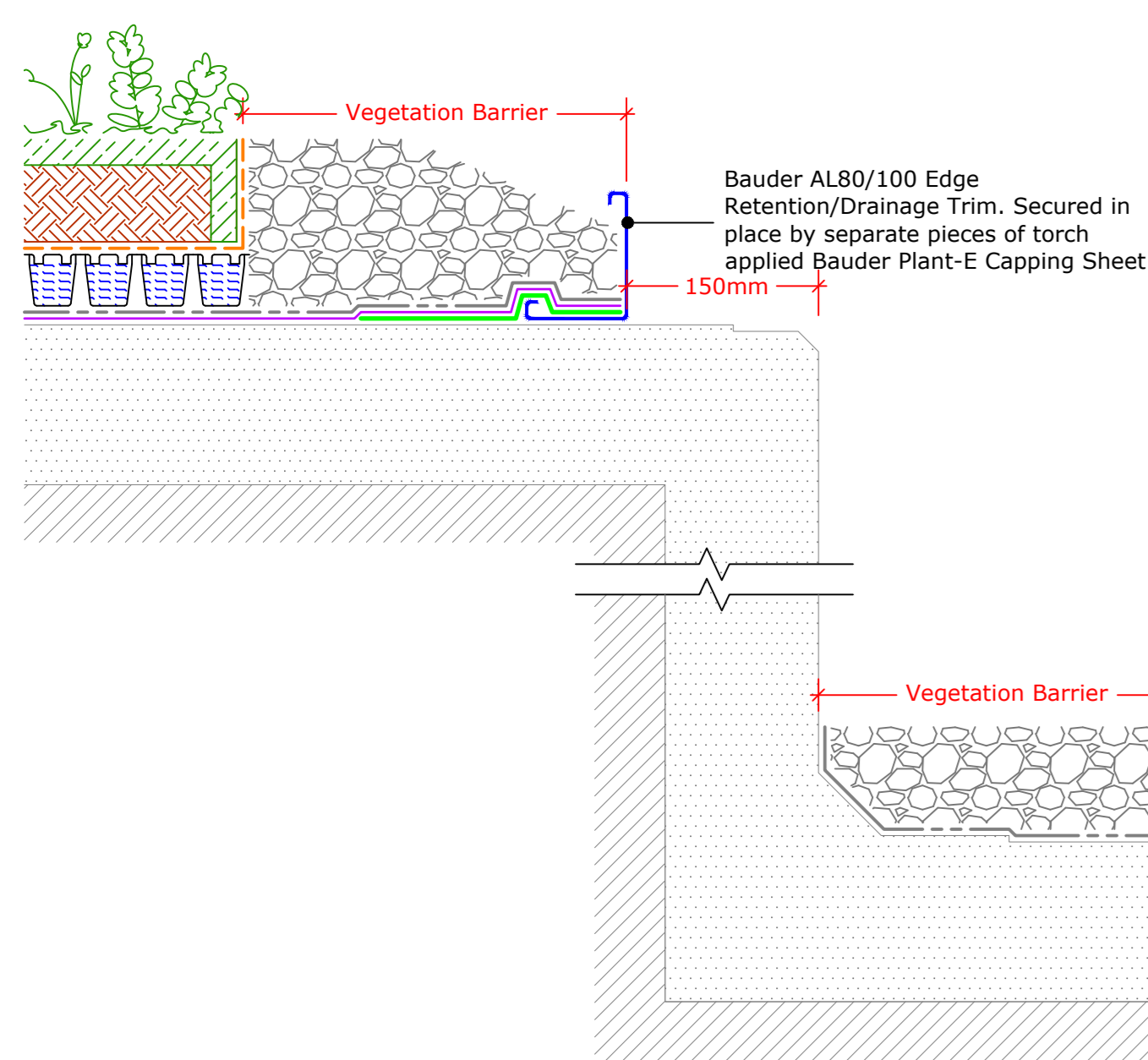
Upstand - Lead Chute
(Drg.No: D0901/03-00W_0-4Deg_006-ExtInt_009)



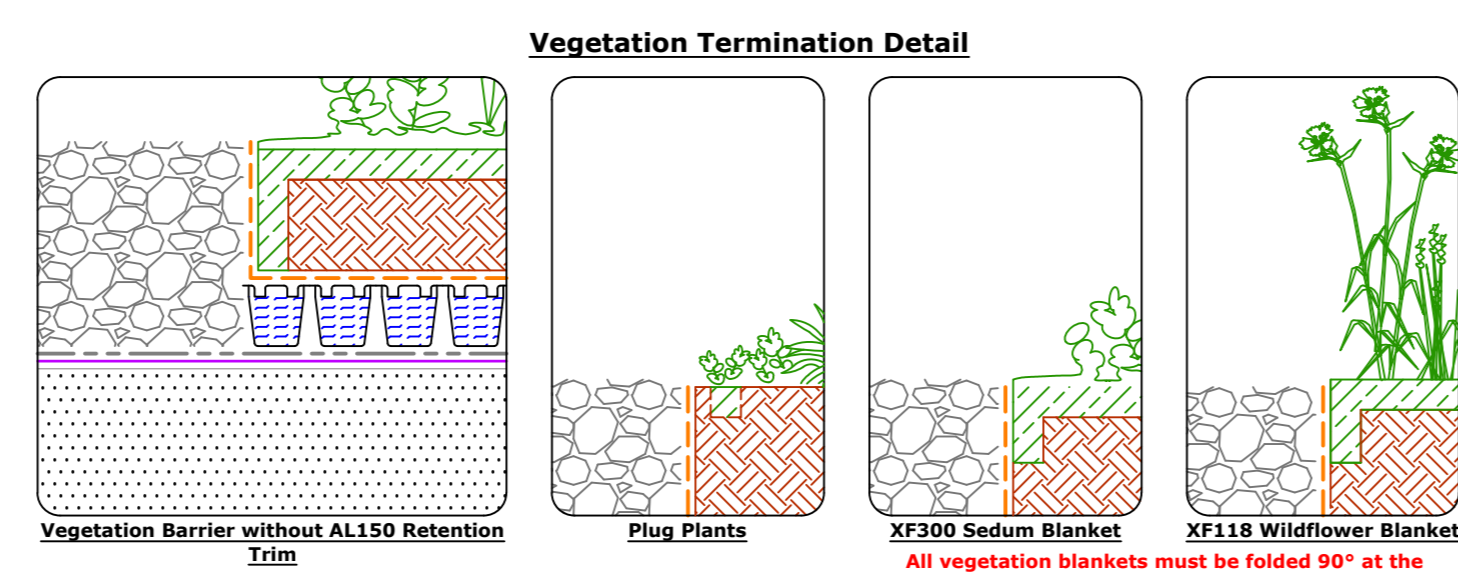
Twin Kerb Expansion Joint
(Drg.No: D0901/03-00W_0-4Deg_004-ExtInt_001)



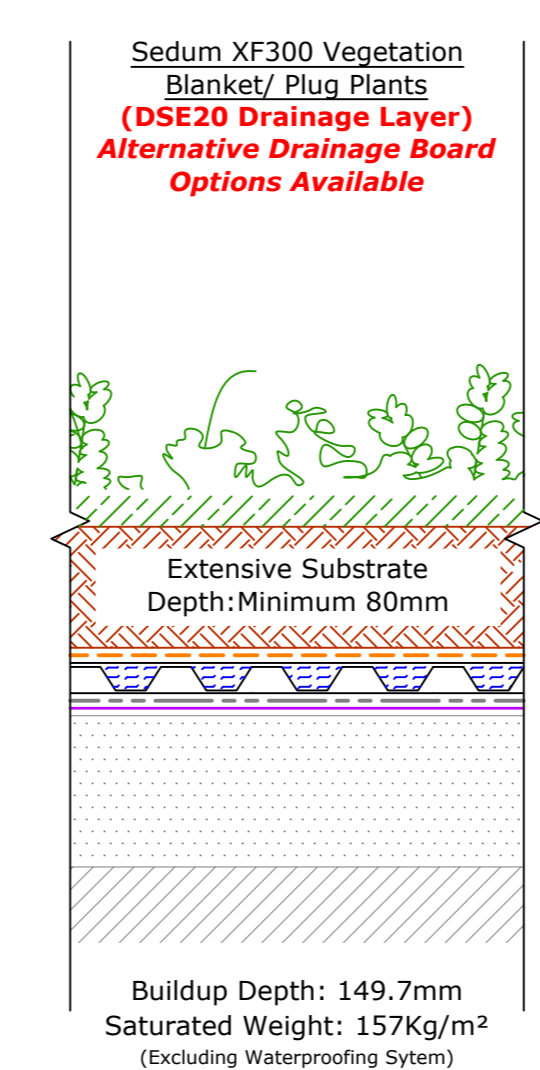
Upstand - Soil Vent Pipe
(Drg.No: D0901/03-00W_0-4Deg_007-ExtInt_001)



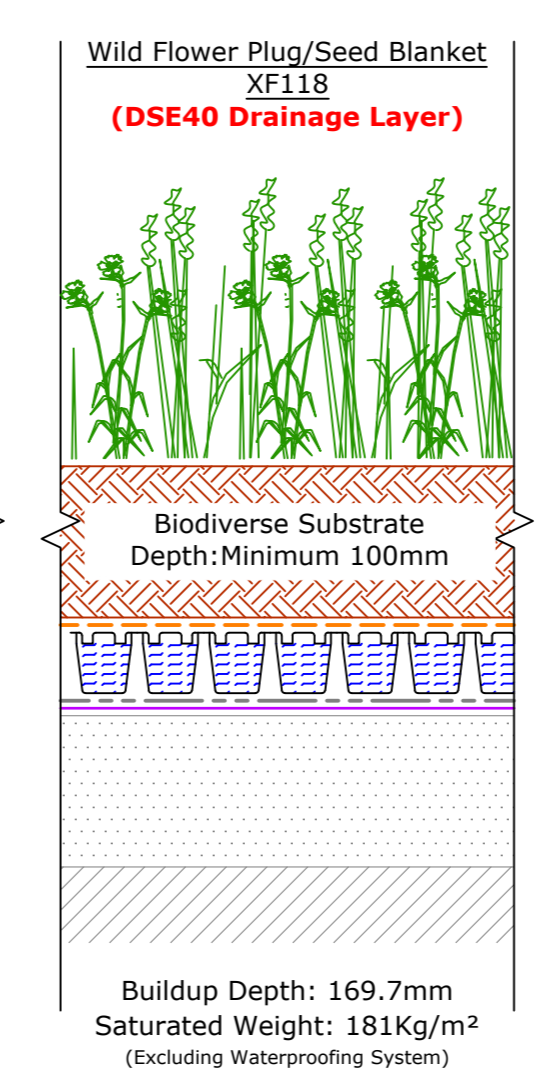
Change in Levels
(Drg.No: D0901/03-00W_0-4Deg_010-ExtInt_001)



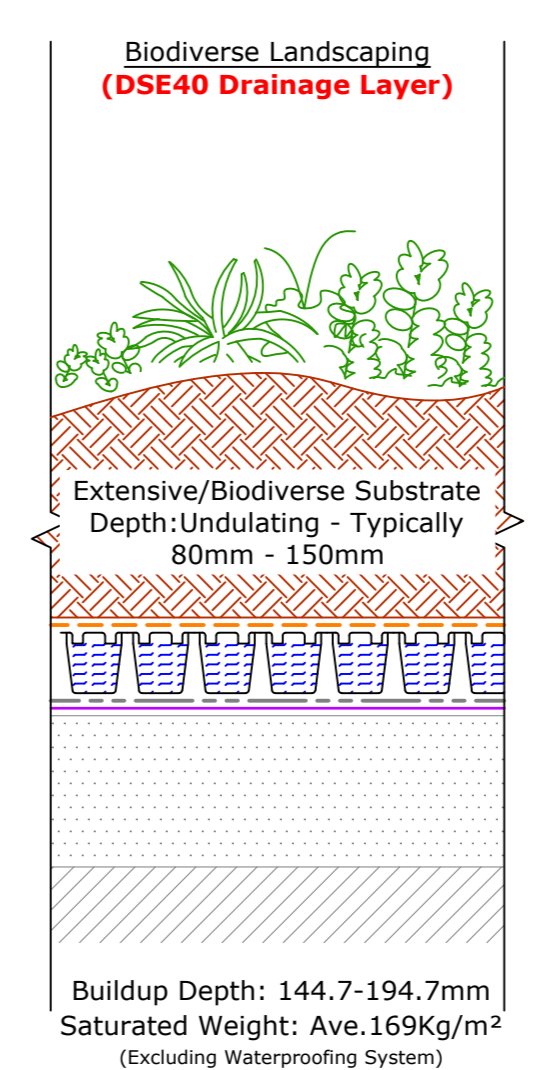
Vegetation Termination Detail



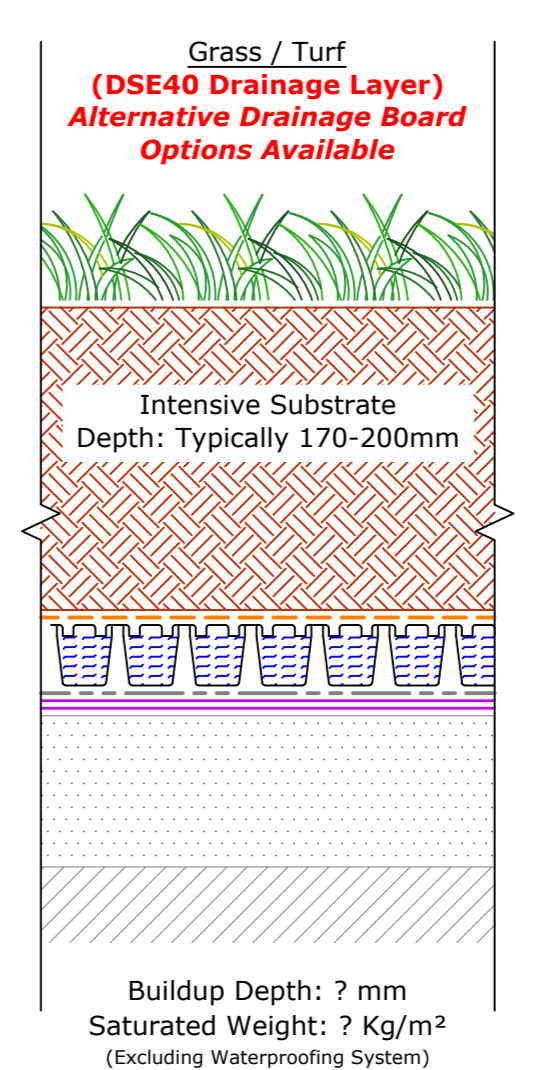
Extensive Soft Landscaping (0-4°)



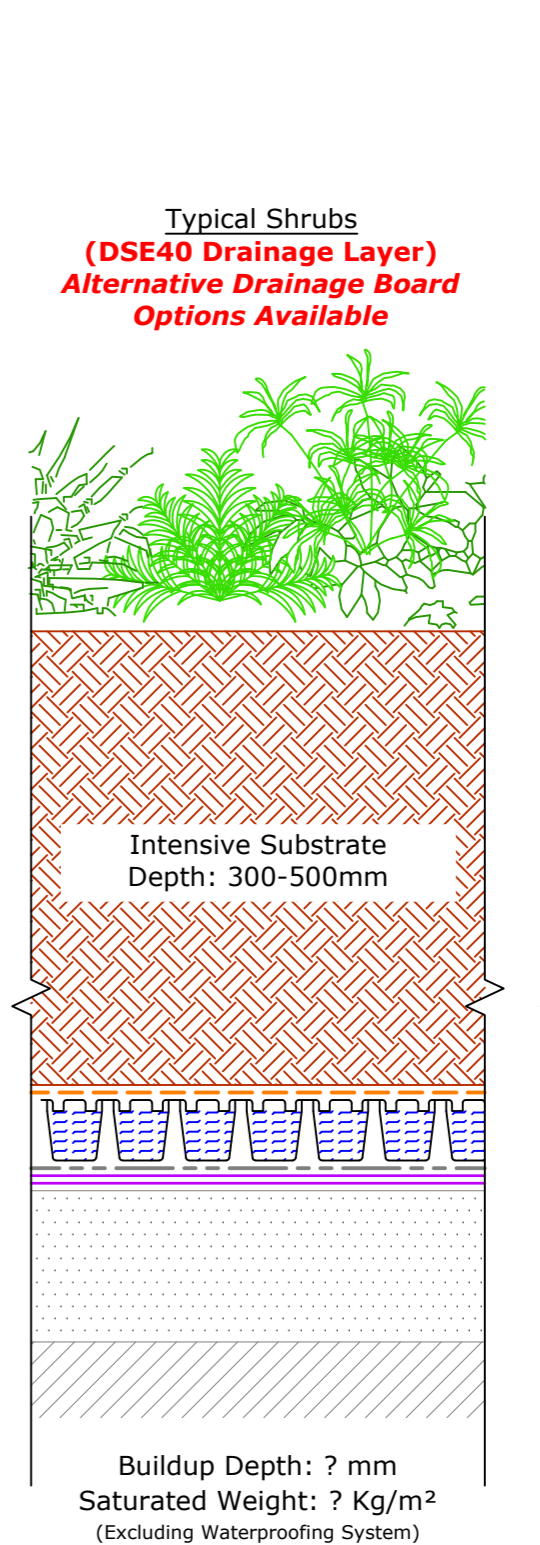
Extensive Soft Landscaping (0-4°)



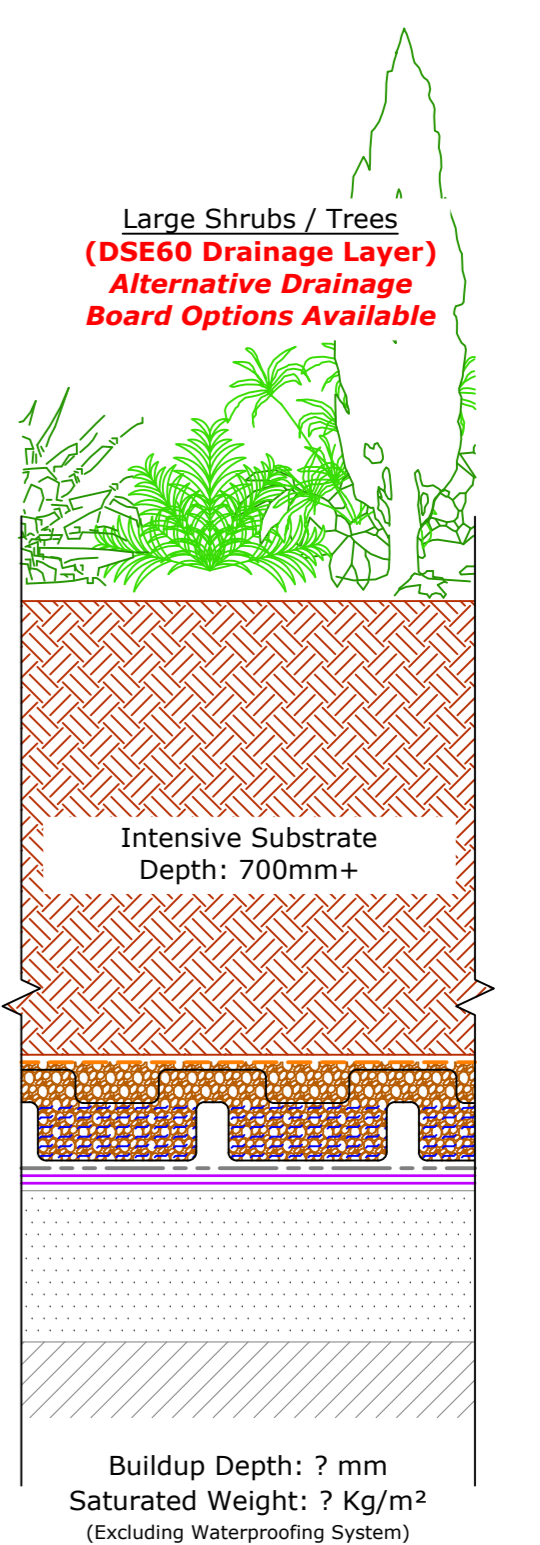
Extensive Soft Landscaping (0-4°)



Intensive Soft Landscaping (0-4°)

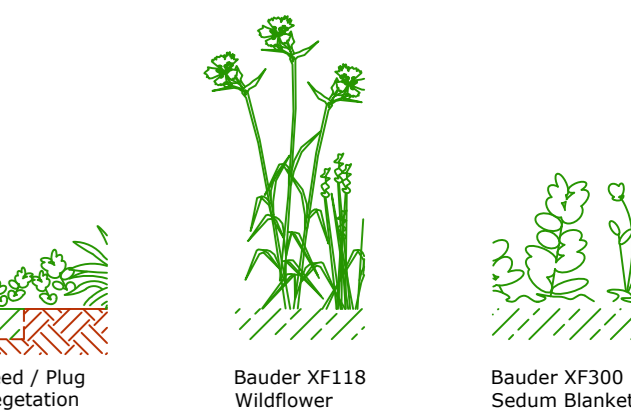


Intensive Soft Landscaping (0-4°)



Intensive Soft Landscaping (0-4°)

Key



(Vegetation type is indicative only. Refer to the specification for the correct vegetation to be used)

- Extensive Substrate
- DSE40 Drainage Board (Refer to Specification for Correct Board to be Used)
- Bauder Filter Fleece
- Bauder Protection Mat
- Bauder PE-Fil - Not required on Single Ply
- Additional Bauder Capping Sheet / Membrane to Secure the Metal Trim (Refer to Specification for Correct Option)
- Bauder Waterproofing System. (Refer to Specific Bauder Waterproofing Details Drawings.)
- Deck / Substrate
- Vegetation barrier Minimum 80mm deep & 300mm wide. Width must be increased to at least 500mm when positioned adjacent to opening, rooflights, windows or door openings. In accordance with both green and fire codes.
- AL150 Edge / Drainage trim. Secured in place by separate pieces of torch applied Bauder Plant-E Capping Sheet. For vegetation/substrate build-up depths greater than 150mm, a bespoke perforated edge/drainage trim is required.

IMPORTANT NOTES:
This Drawing Shows Alternative Details. For the Correct Solution to be Used, Refer to the Project Specific Specification.

- This detail is suitable for the following Bauder Systems: Bauder Total Green Roof System, BauderFor Grass, Thermofel and Thermopel (Excluding Intensive)
- This Drawing Shows Alternative Options. For the Correct Solution to be Used, Refer to the Project Specific Specification.
- Do not scale to ascertain dimensions.
- All dimensions to be checked and verified on site prior to commencement of work.
- This drawing is to be read in conjunction with the specification and associated drawings.
- This detail is a guideline only, representing typical detailing conditions and illustrate the correct application of the above Bauder System. It may be necessary to modify this detail to suit specific project design constraints and conditions.
- Refer to the Bauder Specification for the product description and method of application. For clarity the method of attachment has not been shown.
- Provision should be made by the installer for mechanically fixing the top

Rev	Date	Description	Drawn By



UK OFFICE
Bauder Limited
70 Lansdown Road, Ipswich,
Suffolk, IP1 0QX,
England.
Tel: +44 (0)1473 257671
Fax: +44 (0)1473 230761
Email: enquiries@bauder.co.uk
www.bauder.co.uk

IRELAND OFFICE
Bauder Limited
O'Duffy Centre, Cross Lane,
Carrmichael, Co. Monaghan,
Ireland.
Tel: +353 (0)42 9662 333
Fax: +353 (0)42 9692 879
Email: enquiries@bauder.ie
www.bauder.ie

Extensive/Intensive Green Roof System (0-4° Slope)

Drawn	Checked	Approved	Date