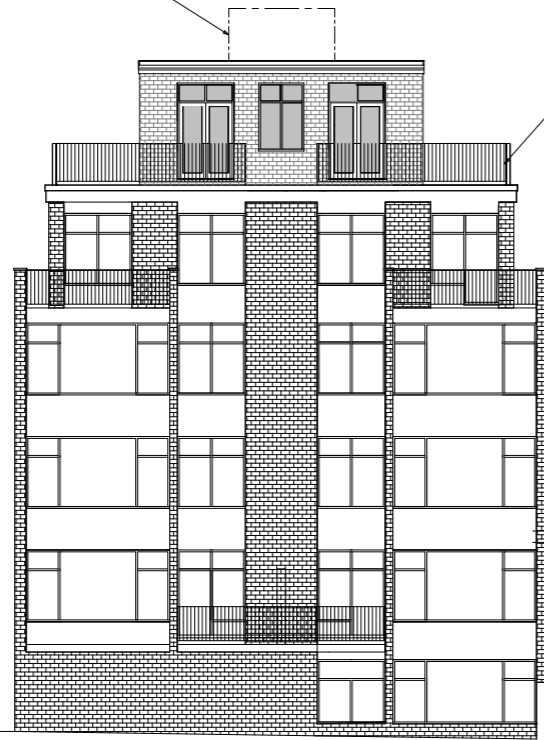
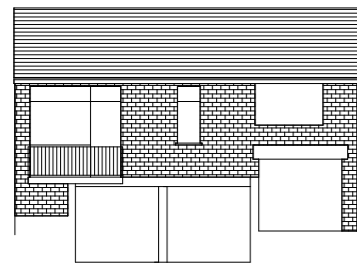


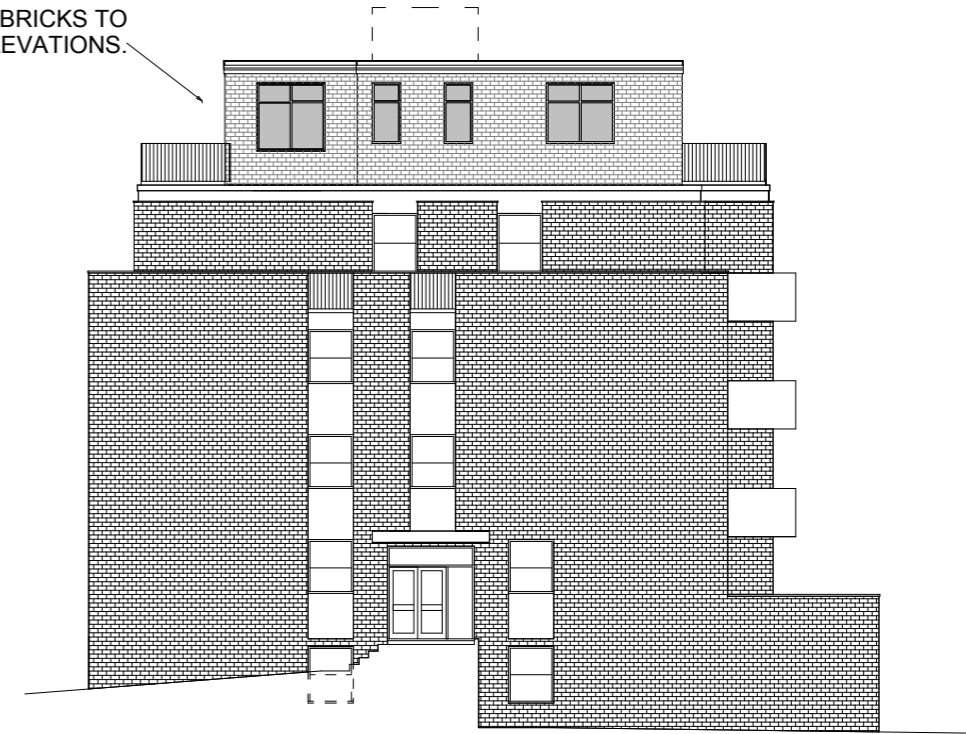
WATER TANKS POSITIONED IN CENTRE OF ROOF. (NOT VISIBLE FROM STREET LEVEL)

WALL FINISH TO BE FACING BRICKS TO MATCH EXISTING LOWER ELEVATIONS.

METAL BALUSTRADE PAINTED WHITE TO MATCH THE LOWER BALUSTRADE

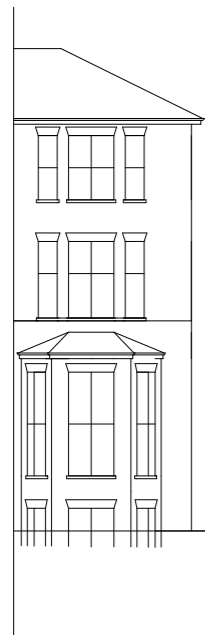


FRONT ELEVATION

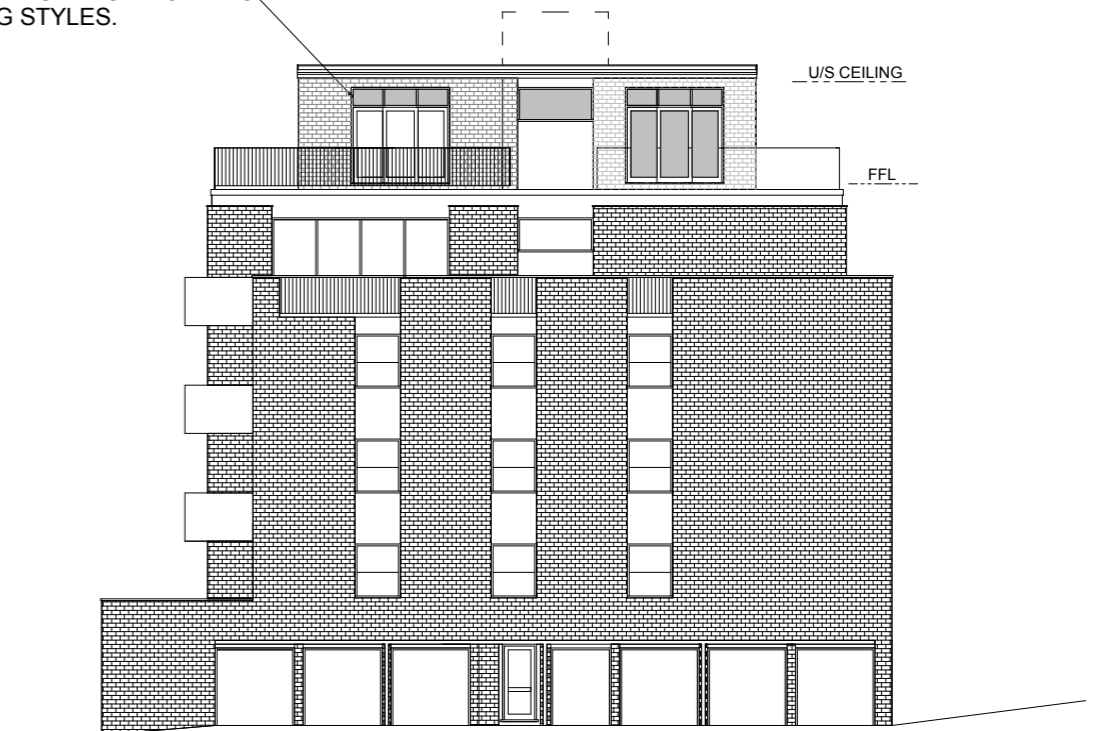
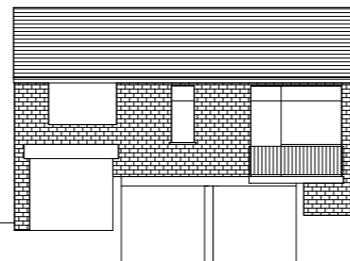


NORTH ELEVATION

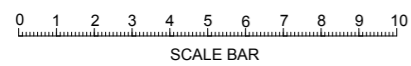
DOORS AND WINDOWS TO BE DOUBLE GLAZING POWDER COATED ALUMINIUM TO MATCH EXISTING STYLES.



REAR ELEVATION



SOUTH ELEVATION



SCALE BAR

PROPOSED ELEVATIONS OF 11, LYNTHURST TERRACE, LONDON, NW3.