

LAYOUT TAKEN FROM ARCHITECTS DRAWING No. 029 L(00)_F_099 -Level-1-Block F Rev D Received 31-01-17



hello@covertinstallations.co.uk

75mm CABLE TRAY FOR BT OPENREACH FIBRE AND COPPER CABLING FOR COMMERCIAL UNIT

150mm CABLE TRAY WITH DIVIDERS FOR DOOR ENTRY AND LIFE SAFETY CABLING

100mm CABLE TRAY FOR BT OPENREACH FIBRE AND COPPER CABLING

150x150mm GALVANISED TRUNKING FOR VIRGIN MEDIA CABLING

150x150mm GALVANISED TRUNKING FOR VIRGIN MEDIA CABLING

300mm SUB-MAN CABLE TRAY

75x50mm GALVANISED TRUNKING FOR LIGHTING AND POWER

250mm SUB-MAN CABLE TRAY

75x50mm GALVANISED TRUNKING FOR LIGHTING AND POWER

100mm SUB-MAN CABLE TRAY

150x150mm GALVANISED TRUNKING FOR VIRGIN MEDIA CABLING

150mm CABLE TRAY WITH DIVIDERS FOR DOOR ENTRY AND LIFE SAFETY CABLING

150mm CABLE TRAY WITH DIVIDERS FOR DOOR ENTRY AND LIFE SAFETY CABLING

150mm CABLE TRAY WITH DIVIDERS FOR DOOR ENTRY AND LIFE SAFETY CABLING

150mm CABLE TRAY WITH DIVIDERS FOR DOOR ENTRY AND LIFE SAFETY CABLING

150mm CABLE TRAY WITH DIVIDERS FOR DOOR ENTRY AND LIFE SAFETY CABLING

150mm CABLE TRAY WITH DIVIDERS FOR DOOR ENTRY AND LIFE SAFETY CABLING

150mm CABLE TRAY WITH DIVIDERS FOR DOOR ENTRY AND LIFE SAFETY CABLING

150mm CABLE TRAY WITH DIVIDERS FOR DOOR ENTRY AND LIFE SAFETY CABLING

150mm CABLE TRAY WITH DIVIDERS FOR DOOR ENTRY AND LIFE SAFETY CABLING

150mm CABLE TRAY WITH DIVIDERS FOR DOOR ENTRY AND LIFE SAFETY CABLING

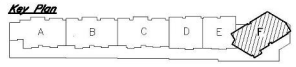
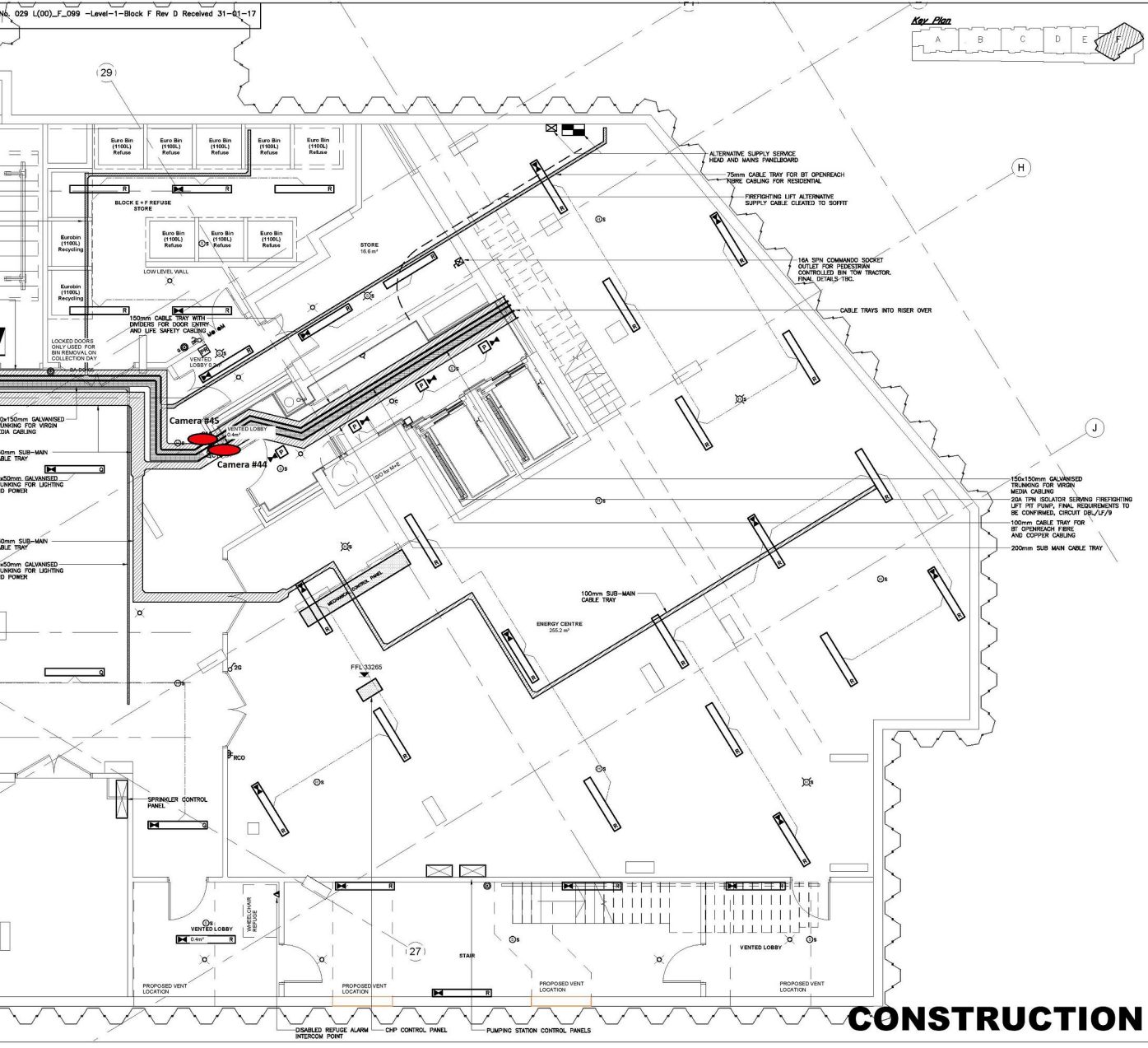
150mm CABLE TRAY WITH DIVIDERS FOR DOOR ENTRY AND LIFE SAFETY CABLING

150mm CABLE TRAY WITH DIVIDERS FOR DOOR ENTRY AND LIFE SAFETY CABLING

150mm CABLE TRAY WITH DIVIDERS FOR DOOR ENTRY AND LIFE SAFETY CABLING

150mm CABLE TRAY WITH DIVIDERS FOR DOOR ENTRY AND LIFE SAFETY CABLING

150mm CABLE TRAY WITH DIVIDERS FOR DOOR ENTRY AND LIFE SAFETY CABLING



NOTES
 1. ALL DIMENSIONS ARE IN MILLIMETRES UNLESS OTHERWISE INDICATED.
 2. THIS DRAWING SHALL BE READ IN CONJUNCTION WITH THE SPECIFICATION AND ALL OTHER DRAWINGS.

CI	CONSTRUCTION ISSUE	LT	MD
Date	Revision	Drawn	Checked

Norman Bromley Partnership LLP
 consulting engineers
 Bridge House
 87-101 High Street,
 Tonbridge,
 Kent, TN10 1DR

Tel. No. (01732) 773737 Fax No. (01732) 773353
 Email: info@normanbromley.co.uk

Client
WIVES LIVING SPACE

Project
ABBEY ROAD

Service
 Electrical Engineering

Title
**BLOCK F LEVEL -1
 ELECTRICAL ENGINEERING SERVICES
 ARRANGEMENT**

Scale	Date	Drawn	Approved
1:5000/1	REV 10	PEY	MD

Drawing No.	REV.
EBS 1536-F/1	C1

CONSTRUCTION