

# South Garden

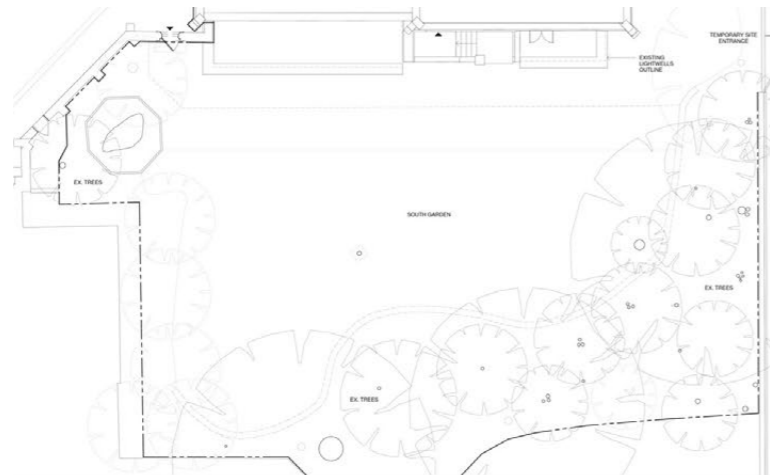
Sunken Terraces



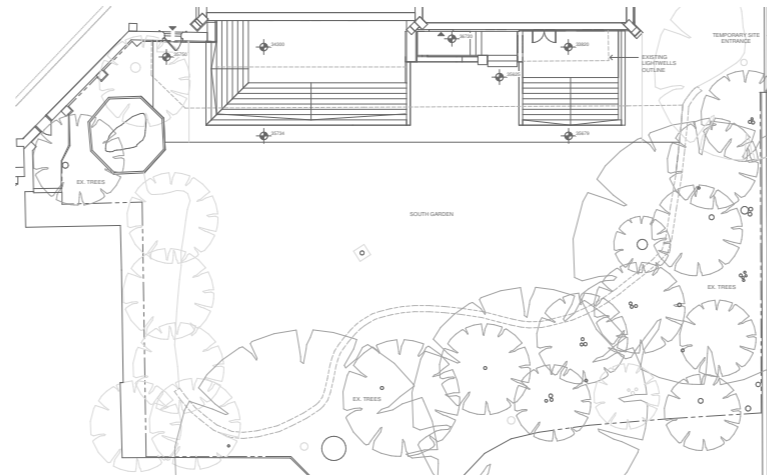
A scene depicting Sunday School

## Site Plan

### Existing



### Proposed



### Existing

#### Vicarage lightwells

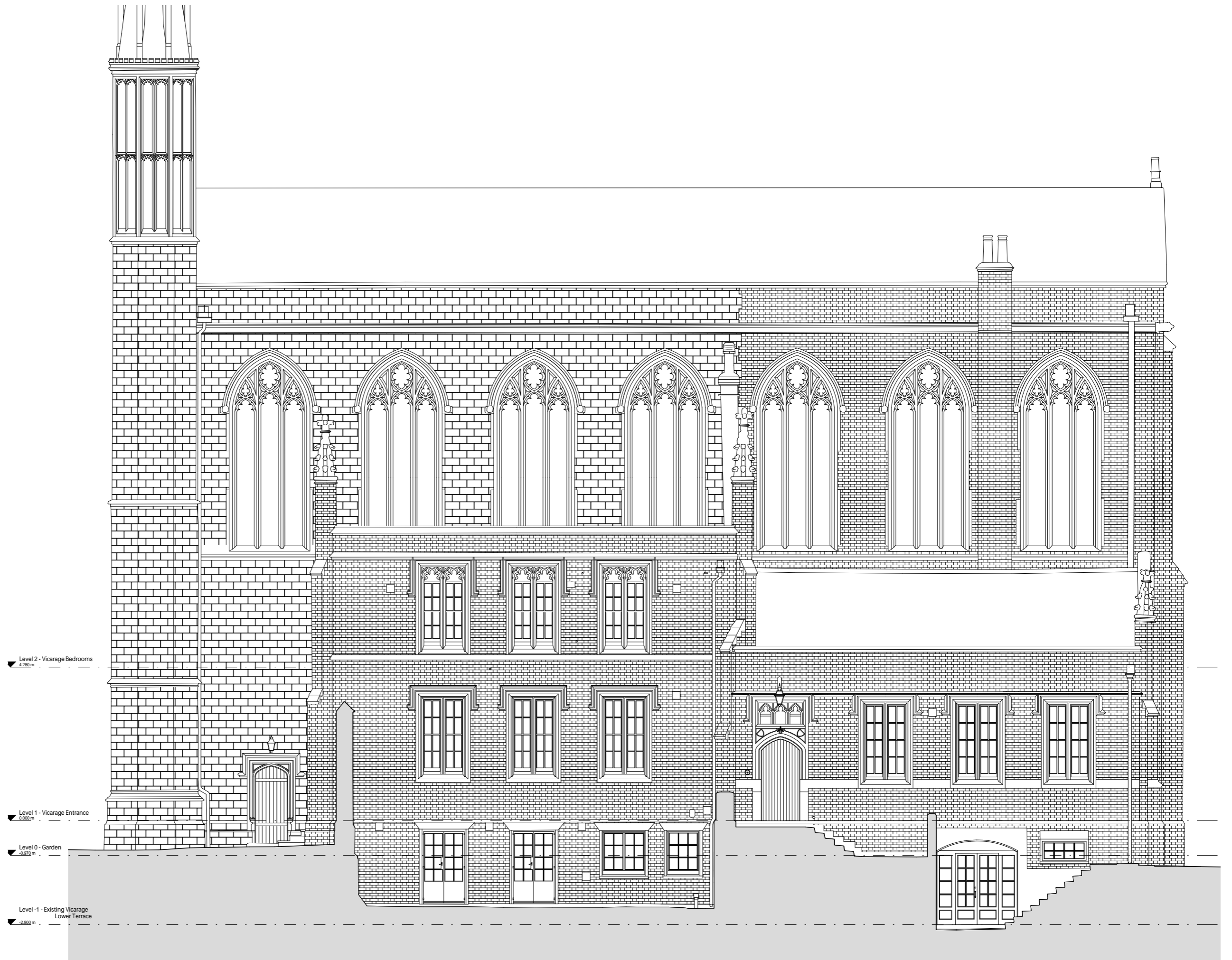


Current lightwells solely provide access and minimal light to the basement level of the Vicarage. The proposal seeks to create an enhanced connection between the Vicarage basement levels and the South Garden through terrace steps. This aims to create garden views and higher light levels in the basement teaching spaces, which currently do not exist. The sunken terraces will also have the capacity to host outdoor lessons.

# Existing

The Vicarage  
South Elevation

1:100



# Proposed

## The Vicarage South Elevation

1:100

### KEY

 New additions



5 0 5 10

# Proposal

## Vicarage Entrance

### KEY

- 1 Natural stone floor
- 2 Brick retaining wall
- 3 Bush hammered stone coping

### The Nave



Mogens Koch's pulpit design in the Nave

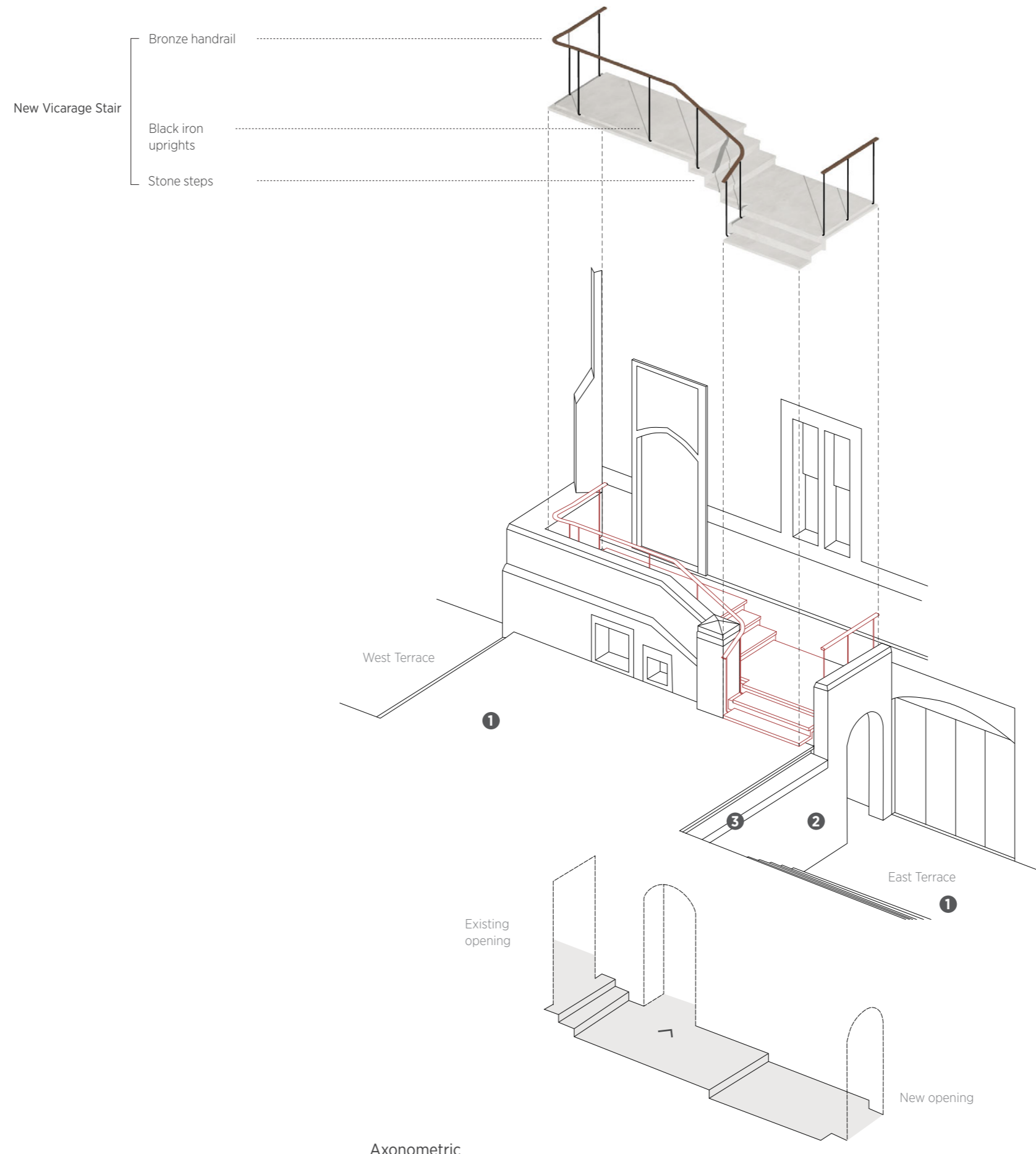


### Summary

Following multiple iterations in the design process, the proposal offers a historically sensitive and spatially rich solution, crafted with details unique to the setting and story of the Danish Church in London.

It proposes minimal impact to the existing historic fabric and meets the original design brief set by the Church. Materials comprise of high-quality stone, brick and metalwork, inspired by the building's existing details and facade materials.

The railing detailing has been inspired by the Danish designer Mogens Koch's interventions within the Church Nave. They take on a similar curved nature, fixed directly into the stone.

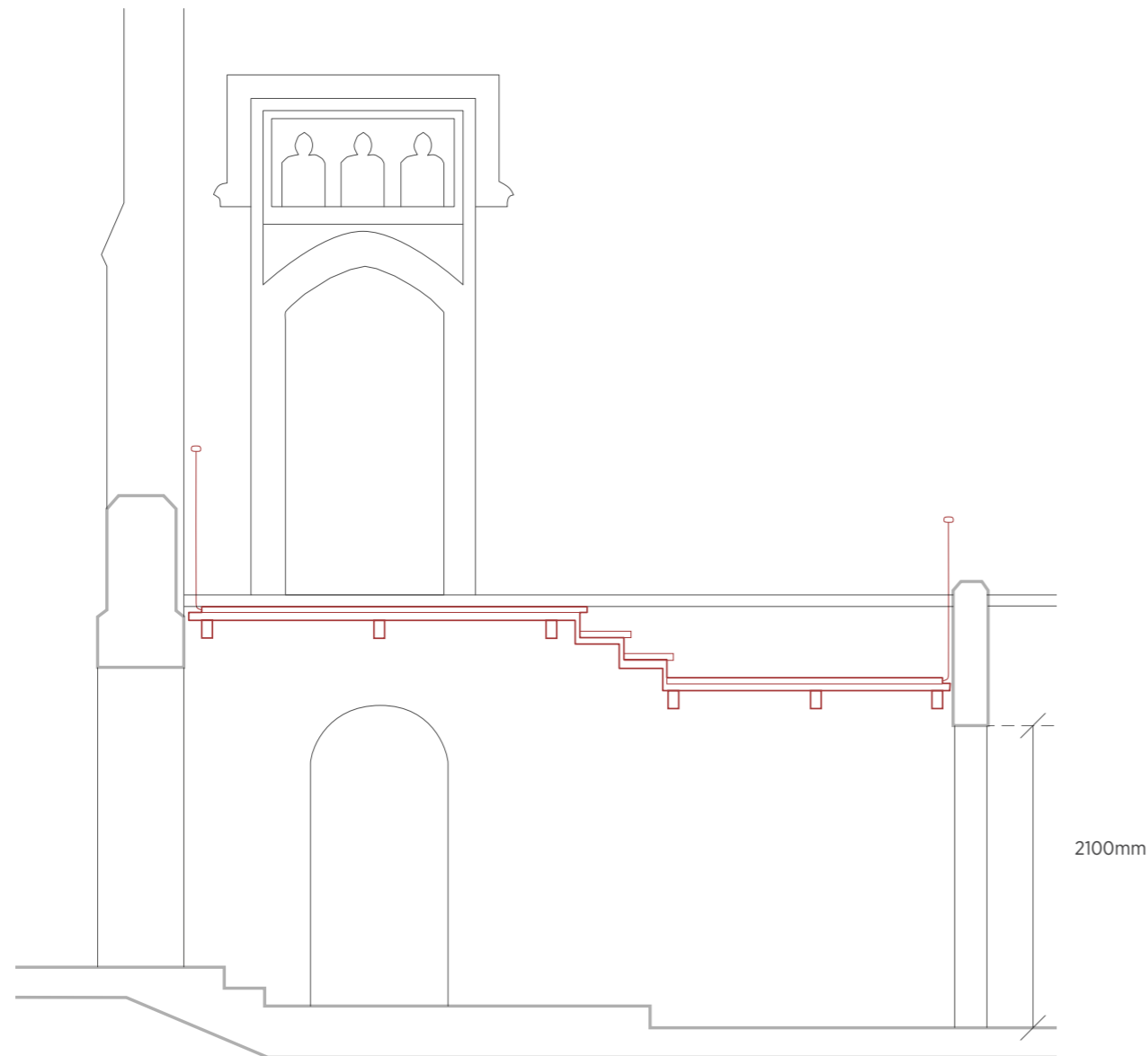




View to West Terrace



View to East Terrace



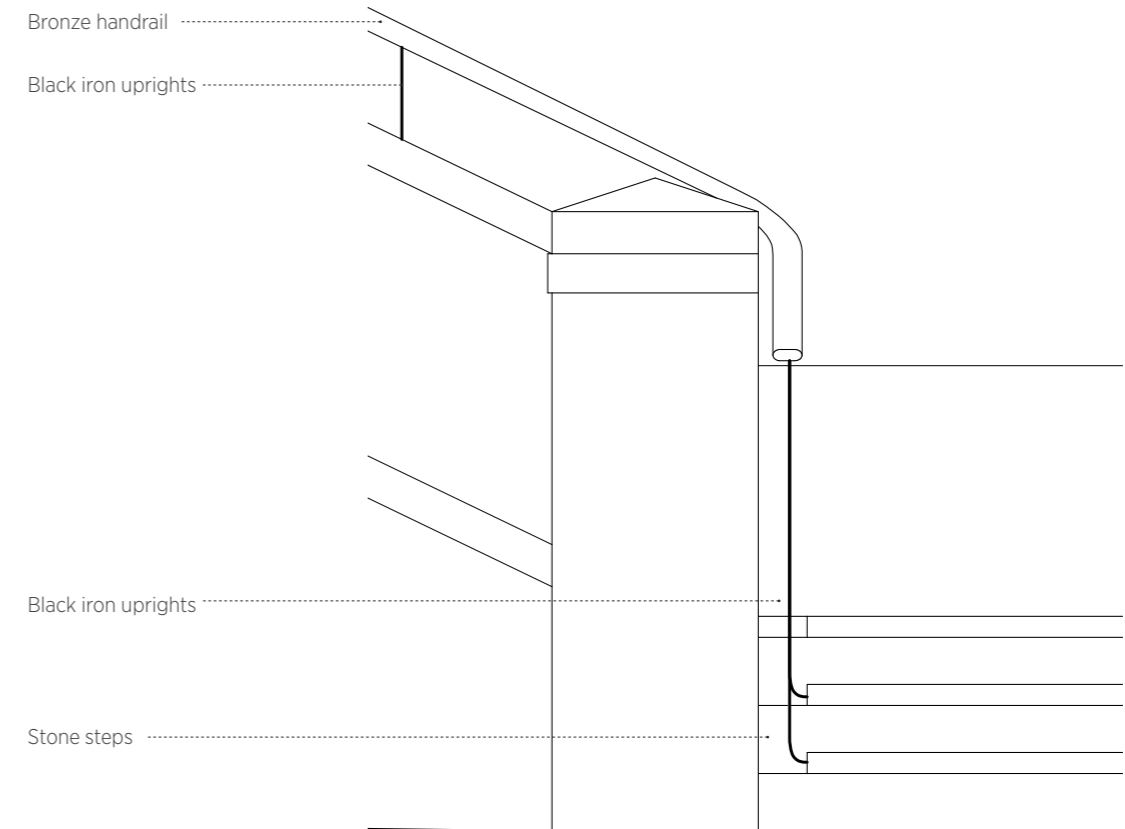
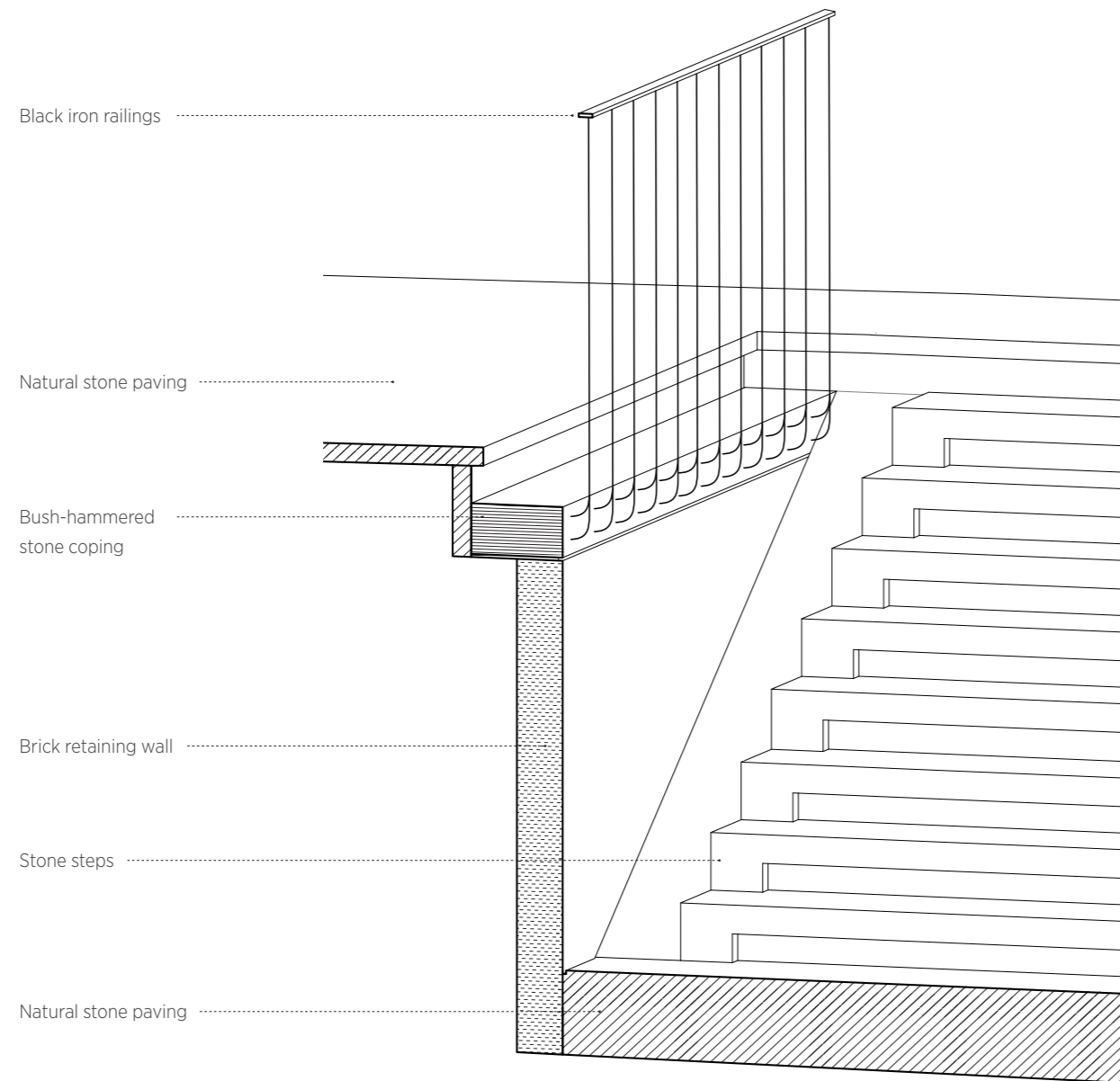
2100mm

Section



# Proposal

## Typical Material Details



C.F. Møller detail  
Vestersøhus, Copenhagen  
1939