

# Post-Consultations

## Design Development

### Consultations

Following our pre-planning consultation discussions with Camden Council, Historic England and The Crown Estate, we reviewed the useful feedback from each party. Amongst much positive response, one of the corresponding responses related to the retention of part of the Vicarage entrance stair. We looked to consider potential ways as to how we could retain part of or all of the existing Vicarage entrance stair.

On closer inspection of the Vicarage entrance stair, it became apparent its intrinsic historic quality lies largely in its brick enclosure. Its internal stair treads comprise of asphalt matting and are made of simple construction. The east elevation wall (see photo B to the right) appears to be a later addition, comprising of a mock-stone plaster finish on a wall of a variant brick construction to the existing facade.

### Proposal

Since our initial brief, it has been essential to provide a connection between the two basement teaching rooms, increase light levels and promote a greater connectivity to the South Garden.

We are delighted to present a proposal which looks to retain the existing brick enclosure to the Vicarage entrance stair, by creating a subtle walkway link below the stair, between the two terraces. Please see the images to the right.

**Summary of works to Vicarage Entrance**  
see images to the right

**A B West Elevation:** The removal and safe storage of door leaf and light fixture; **East Elevation:** Create an opening at lower level in mock stone plaster/brick wall.

**C Internal Treads:** Furthermore, it requires the removal of the internal asphalt matting and tread construction within. We propose to replace with high-quality new stone stair treads. This new construction will also allow for sufficient head height for the proposed walkway link below.

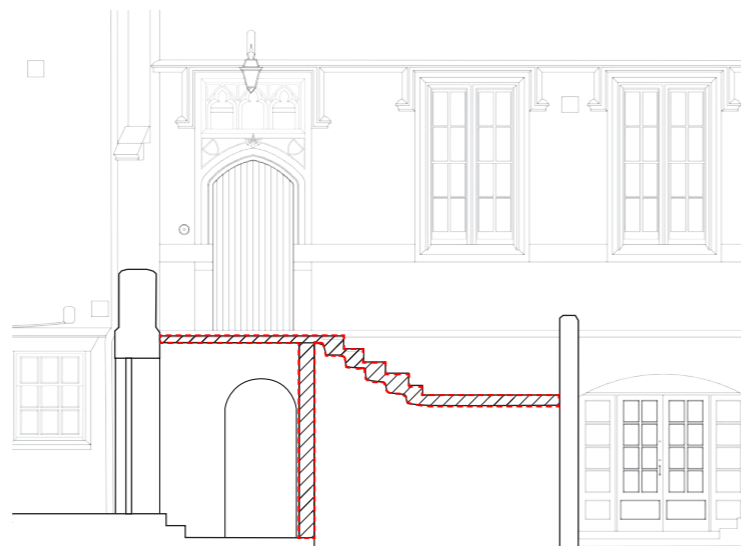
**D Below:** Widening of opening in brick wall internally, existing door leads to understair cupboard.

### The Vicarage Entrance

Existing Condition



Elevation of the brick enclosure to the Vicarage entrance



Brick enclosure walls retained and internal treads removed

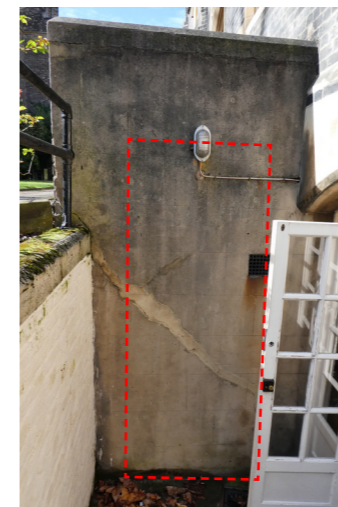
### Proposed Alterations

#### A West Elevation



Removal of door leaf. New lighting strategy.

#### B East Elevation



New opening in mock stone plaster wall. Addition of new brick wall facing to match existing.

#### C Internal Treads



Removal of asphalt matting stair treads internally and replacement with high-quality stone stair treads.

#### D Below



Remove stair treads above.

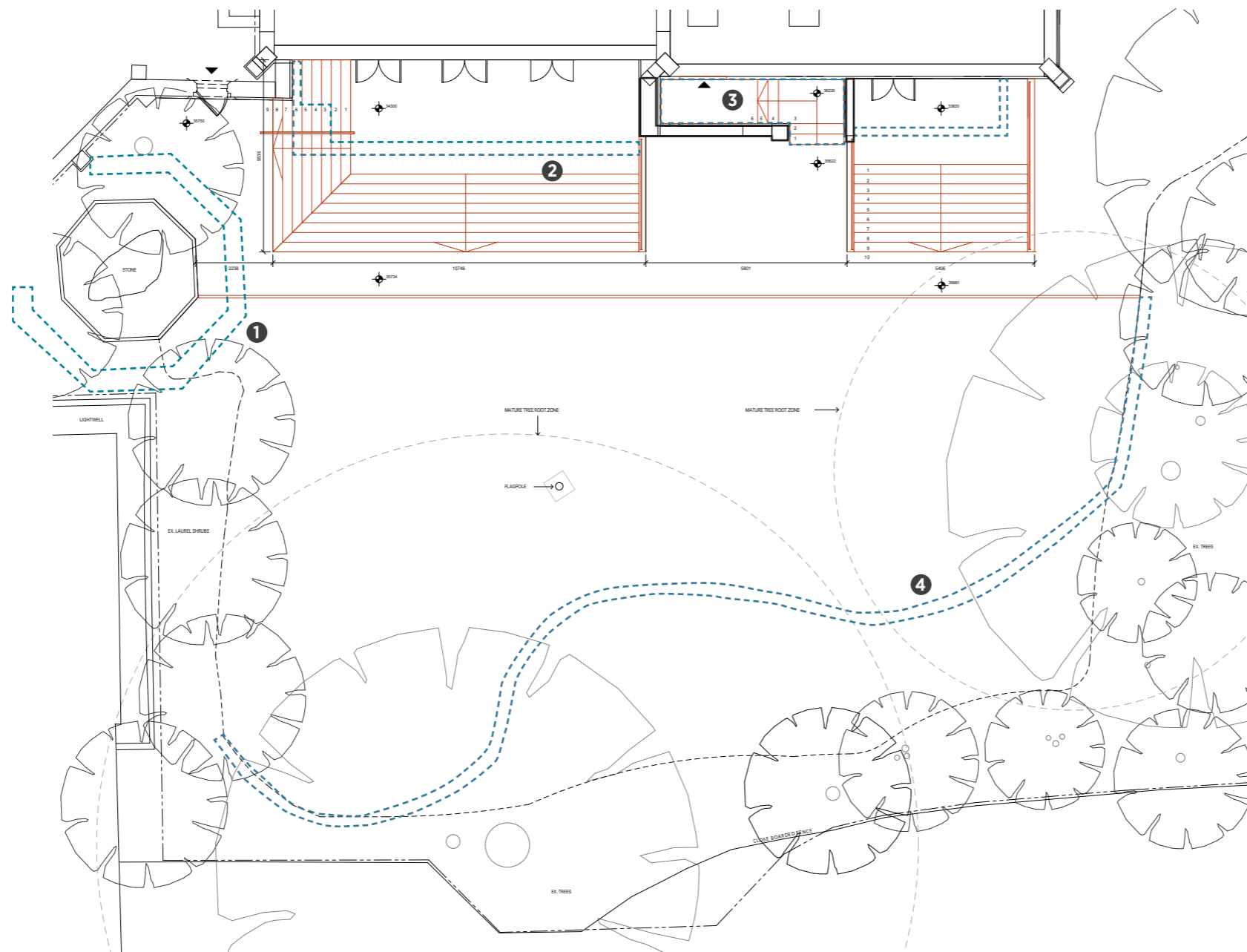
Opening in East Elevation wall, as per image B.

## Summary of Proposed Landscape Works

- Retention of Vicarage stair brick enclosure
- - - Alterations / Removal

### Notes

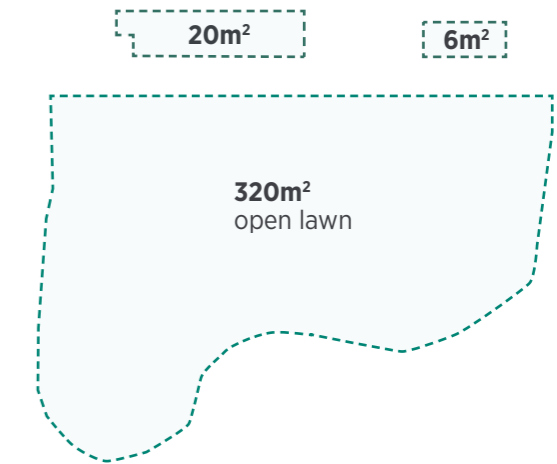
- 1 Removal of low fence encircling the Jelling Stone replica
- 2 Extension to lightwells by the removal of existing lightwell retaining walls
- 3 Removal of Vicarage stair internal stair treads
- 4 Removal of low garden wall containing shrubs



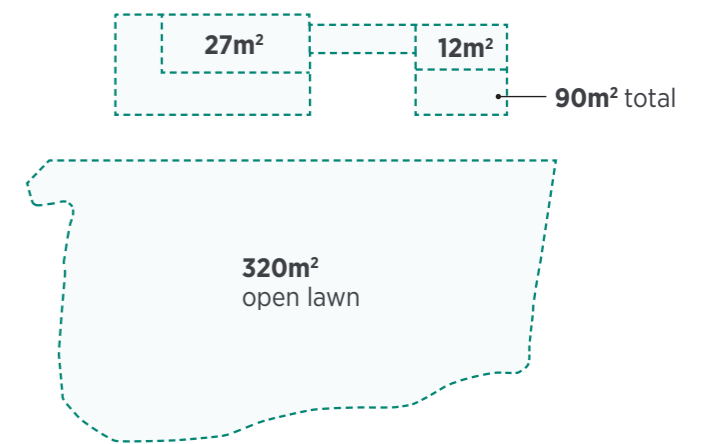
Annotated garden plan | Not to scale

## Quantum Garden Area Comparison

Existing



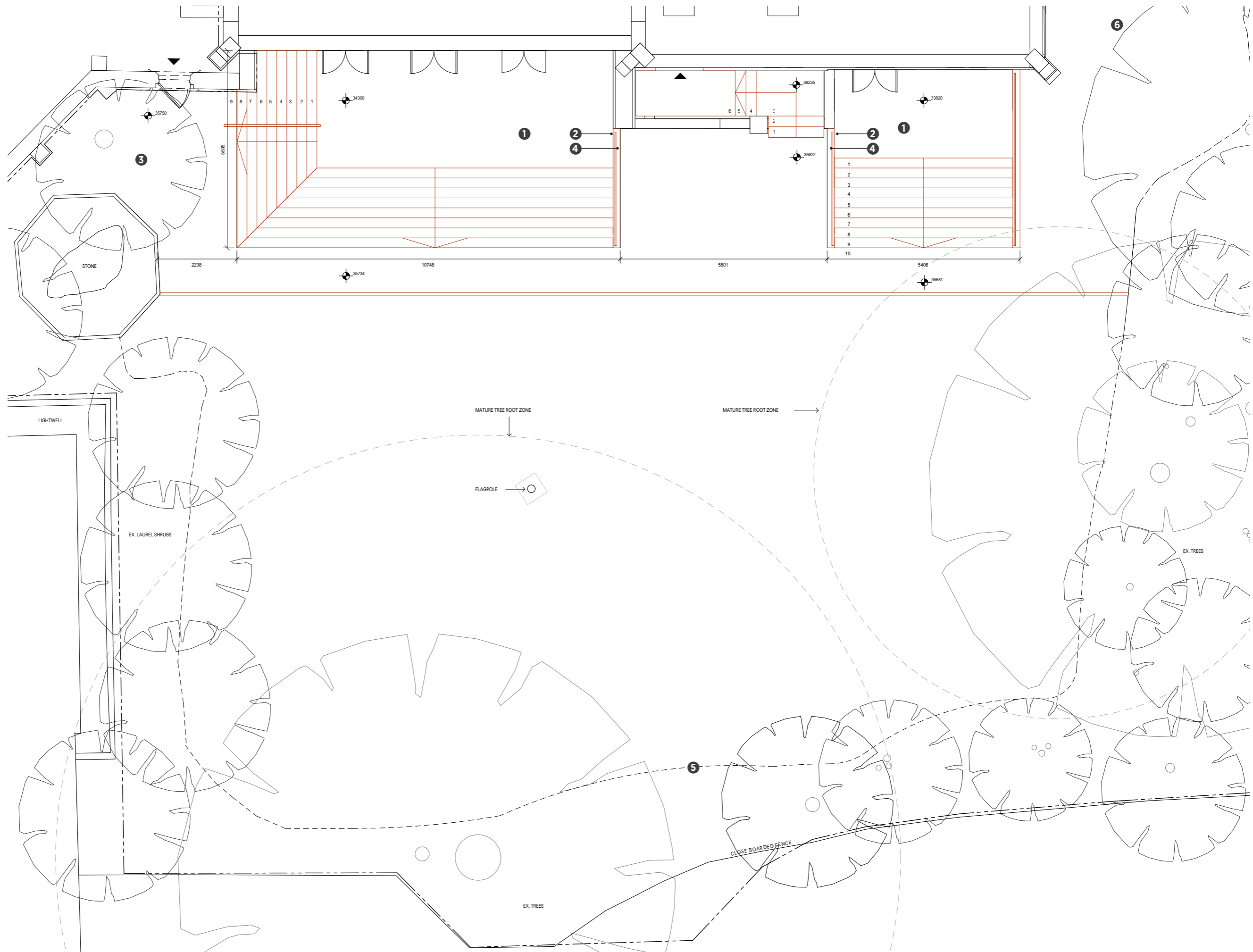
Proposed





# Proposal

South Garden  
1:100



## KEY

- 1 Natural Stone Paving
- 2 Brick Walls
- 3 Reused Flagstones
- 4 Bush Hammered Stone Coping
- 5 New low stone wall and raised mixed border bed
- 6 Existing Gravel





## Materials - Terraces

### Existing Conditions The Danish Church



### Proposed

Reused flagstone paving



Reuse of existing flagstone paving in lightwells in the entrance area of the South Garden.



Stone - floor



A folding stone floor landscape is proposed to the stepped terraces, to match existing stone dressings. The steps are set back from the retaining walls with a generous shadow gap, to make it appear as a floating, folding plane.



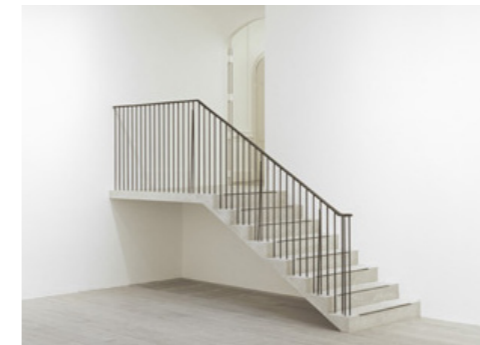
Brick - retaining walls



It is expected the existing grey brick colour on the Church facade is in fact due to pollution, and a lighter brick exists underneath. A lighter brick is proposed for the retaining walls to the sunken terraces.

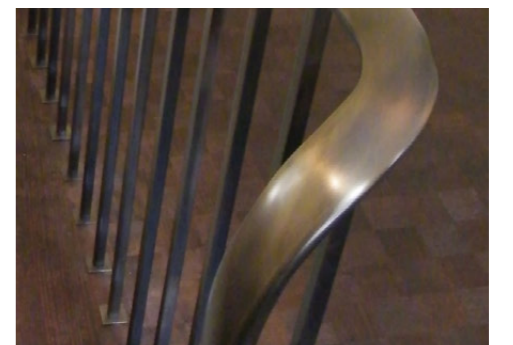


Metalwork - railings



Simple black iron railings are proposed, inspired by the elegant curved metalwork inside the Church. They are required to be black in order to meet The Crown Estate's requirements.

Bronze handrail - Vicarage entrance



A curved bronze handrail is proposed to lead to the Vicarage entrance. The use of bronze offers a material change to the contextual black railings, denoting a sense of permanence and significance to the Vicarage entrance stair.

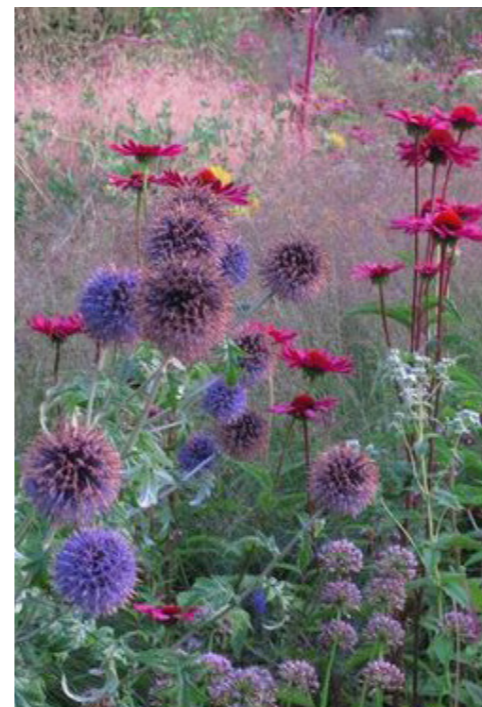
## Garden Atmosphere



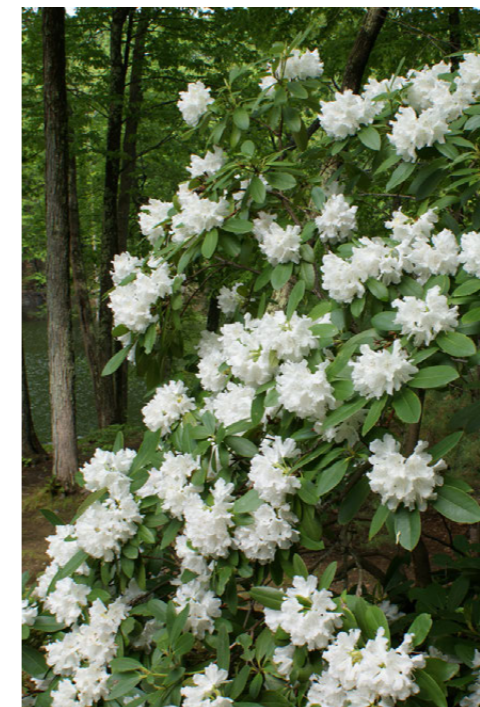
*A rich mixture of plants suitable for shady conditions*



*An open lawn with mixed borders. Climbers on existing walls.*



*Seasonal planting*



*Different types of Rhododendron shrubs at garden edges*



*A palette of colours*