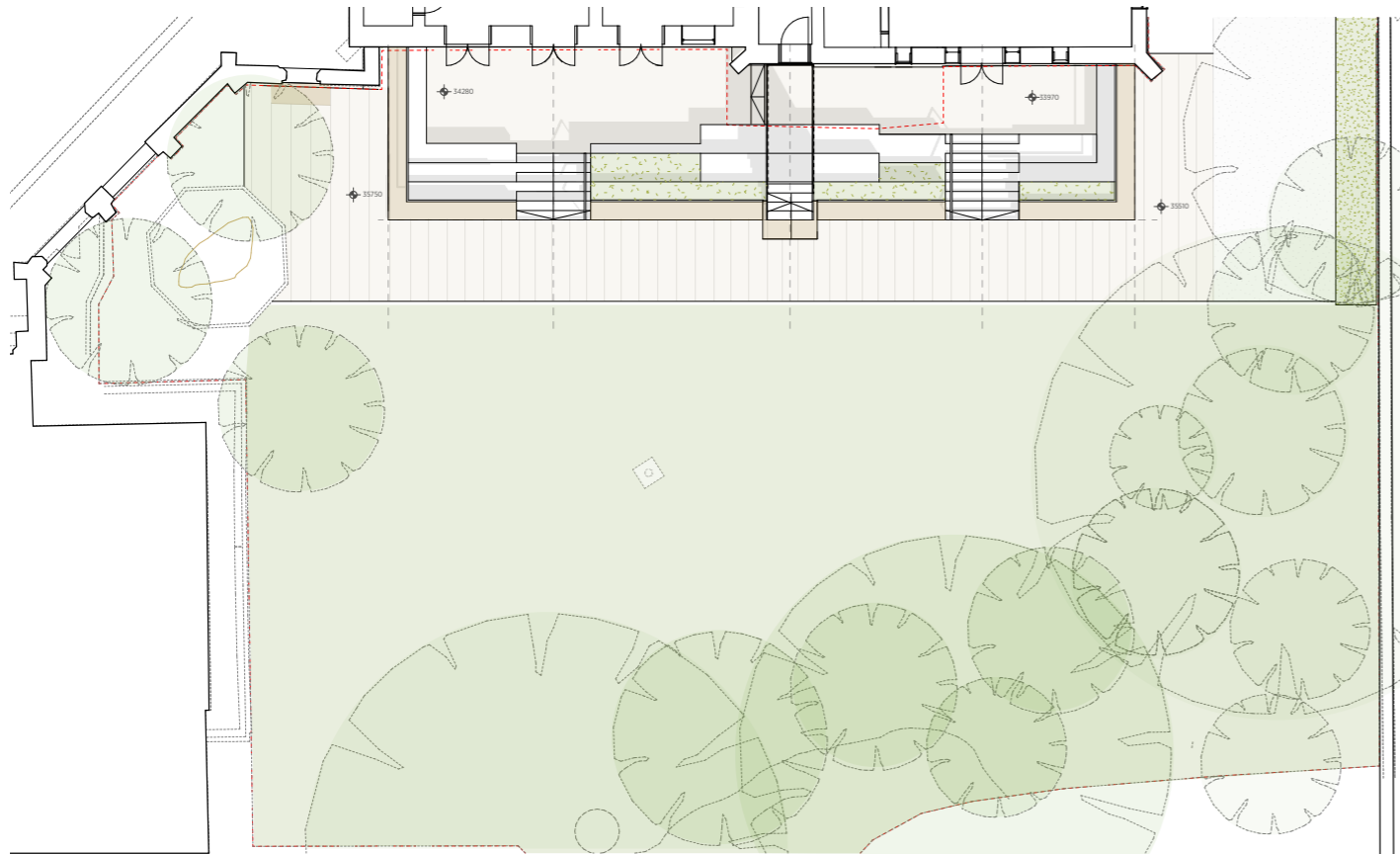


Consultations

Pre-Planning Proposal



Site Plan



Sketch Impression

Summary

The above drawings represent the landscape proposal demonstrated during our pre-planning application process with Camden Council, Historic England and The Crown Estate.

- To summarise, the proposal looked to remove the existing Vicarage entrance and create one connected sunken terrace, with terraced steps to the garden.
- During our consultations, concerns were expressed regarding the removal of the existing Vicarage entrance, which we took on board and considered in our subsequent design development.
- We also considered ways as to how we could simplify the stepped landscape design.