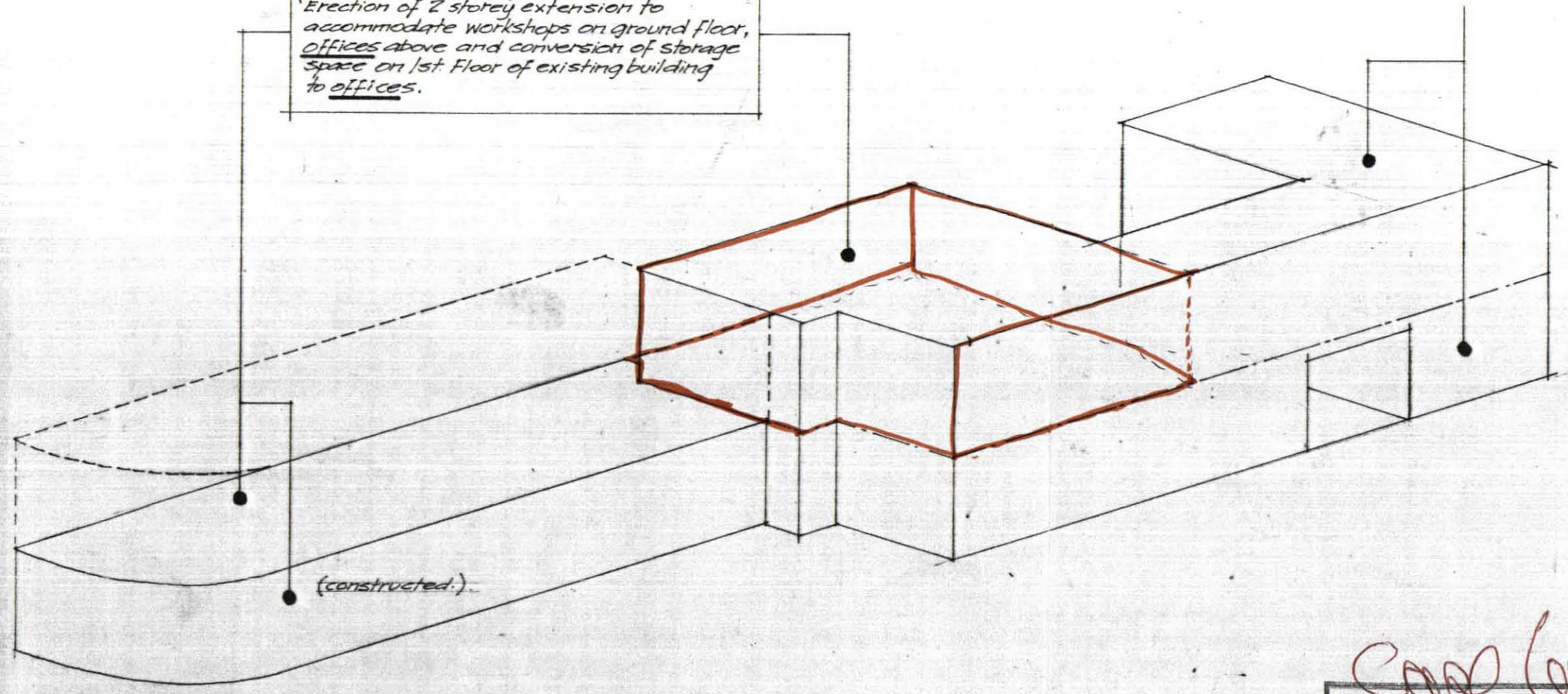


PLANNING PERMISSION GRANTED 28.1.74
 (T.P. REF. CTP/J12/7/B/17015)
 'Erection of 2 storey extension to
 accommodate workshops on ground floor,
 offices above and conversion of storage
 space on 1st Floor of existing building
 to offices.'

NB. office use (established as such over
 period since 1952).



TP9200271

REVISIONS	BY	DATE

OCS GROUP LTD.

Card Copy
 LONDON BOROUGH OF CAMDEN
 TOWN AND COUNTRY PLANNING ACTS
 21 MAY 1992
 PLANS APPROVED
 ON BEHALF OF THE COUNCIL

PROJECT
 38-40 ST PANCRAS WAY
 LONDON NW1

LAWRENCE LAW AND ASSOCIATES
 the old slaughterhouse
 underhill road
 newdigate
 dorking
 surrey RH5 5AB
 telephone newdigate (0306 77) 673

DRAWING TITLE **DIAGRAMATIC SKETCH**
 To be read in conjunction with
 Planning application dated 16-3-92
 JOB No 1216
 DRAWING No 02
 SCALE N.T.S.
 DATE March 1992

THIS DRAWING IS PROTECTED BY COPYRIGHT AND IS NOT TO BE REPRODUCED WITHOUT THE WRITTEN CONSENT OF LAWRENCE LAW AND ASSOCIATES.

REVISION
 DRAWN BY
 CHECKED BY