

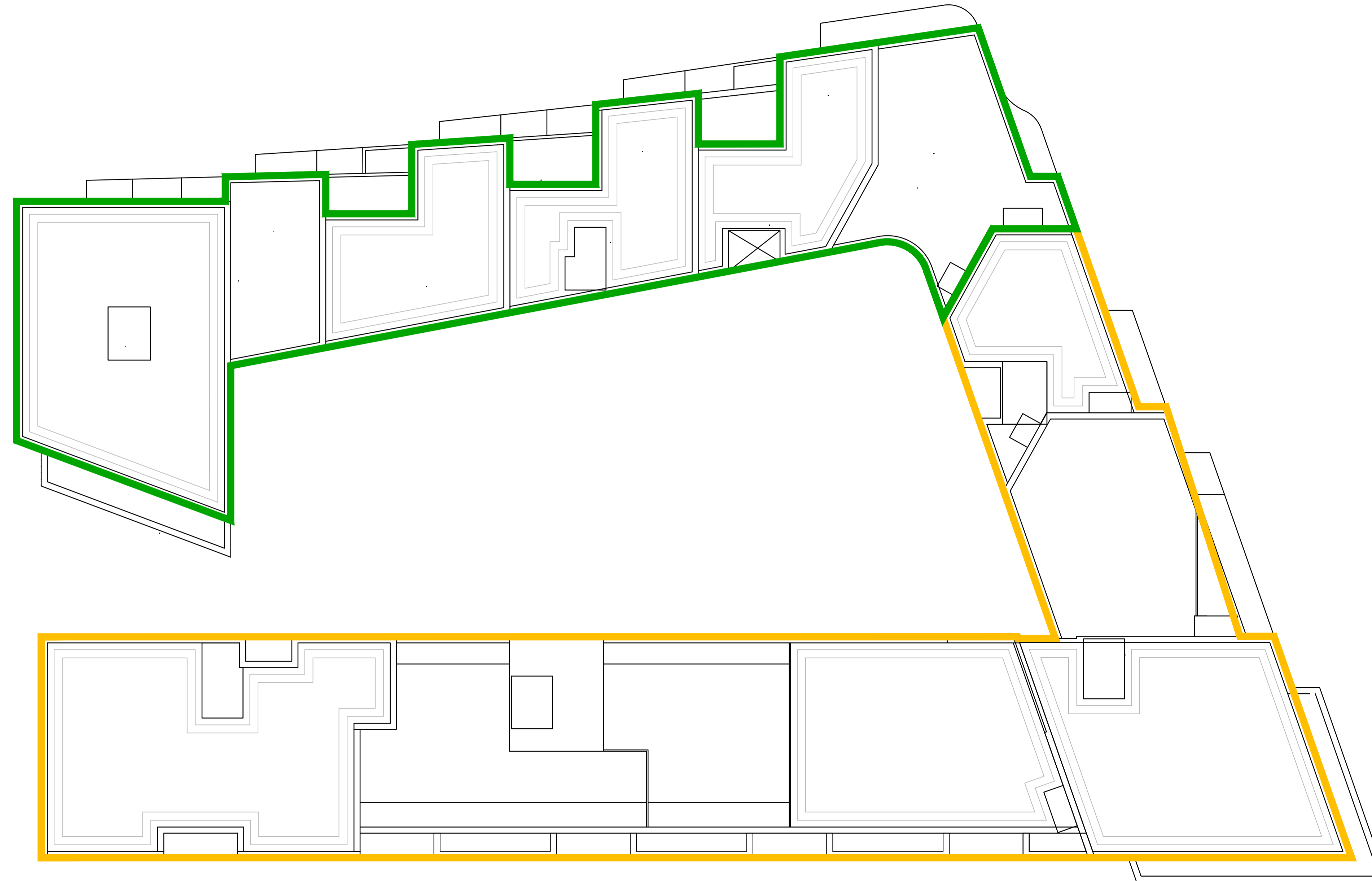


Contractors and consultants are not to scale dimensions from this drawing

KEY:

 Section 1 / Phase 1 Handover 1

 Section 1 / Phase 1 Handover 2



| Revision | Date | Description |
|----------|------------|----------------------------------------|
| P1 | 2018-03-09 | Non Material Amendment Issue |
| P2 | 2018-05-04 | Non Material Amendment Issue |
| P3 | 2018-05-08 | Non Material Amendment (Update to key) |

BroadwayMalyan^{BM}

Eastgate, 2 Castle Street
Castlefield, Manchester
M3 4LZ

T: +44 (0)161 819 2277
F: +44 (0)161 819 2332
E: Man@BroadwayMalyan.com

www.BroadwayMalyan.com

Client
Taylor Wimpey Central London
Project
**Phoenix Place
Mount Pleasant, London**
Description
**Roof Plan
Handover Strategy**

Status
PLANNING - NMA
Scale 1:200@A1 Drawn By CG Date Mar 2018
Job Number 32875 Drawing Number GSD-27-003 Revision P3