

Precedent Image of Boston ivy
Scale: Not to Scale



Precedent Image of Hydrangea petiolaris
Scale: Not to Scale



Precedent Image of Timber Trellis Paint Colour
Scale: Not to Scale



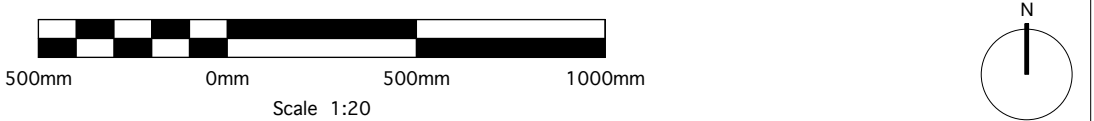
Precedent Image of Timber Trellis Panel
Scale: Not to Scale

- NOTES**
1. All dimensions in millimetres unless otherwise shown.
 2. All levels in metres above Ordinance Datum (mAOD) unless otherwise shown.
 3. All dimensions to be checked on site and any discrepancies reported to Employer before pricing / work starts.
 4. Any ambiguities or discrepancies within this drawing and any other information given elsewhere must be reported to Camlins and the Employer for clarification before pricing work proceeds.
 5. All drawings to be read in conjunction with other Camlins drawings and specification information as required.
 6. Refer to relevant Engineer's and Architect's work packages as appropriate for confirmation of all engineering and architectural details.
 7. All works to be carried out in accordance with the latest British Standards and appropriate codes of practice as a minimum.



- NOTES:**
- All timber to be pressure treated softwood plain finish. Timber painted with 2 nos. coats to ensure full cover of timber. Timber to be fixed with S/S nails to supports.
Proposed paint Cuprinol Garden Shades' Dusky gem or similar approved.
- 1x1m sample panel to be fixed to wall for approval prior to fabrication and full installation.

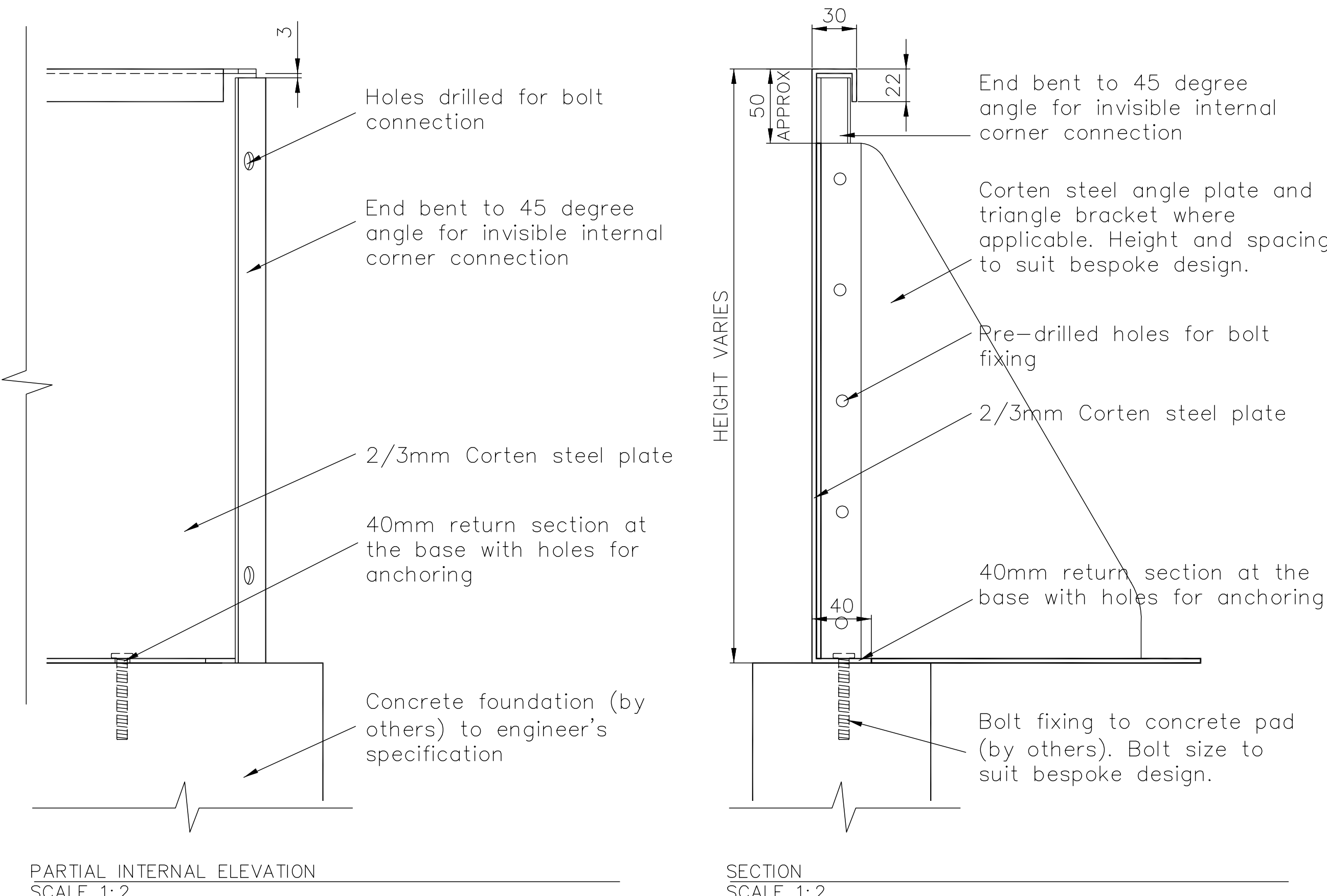
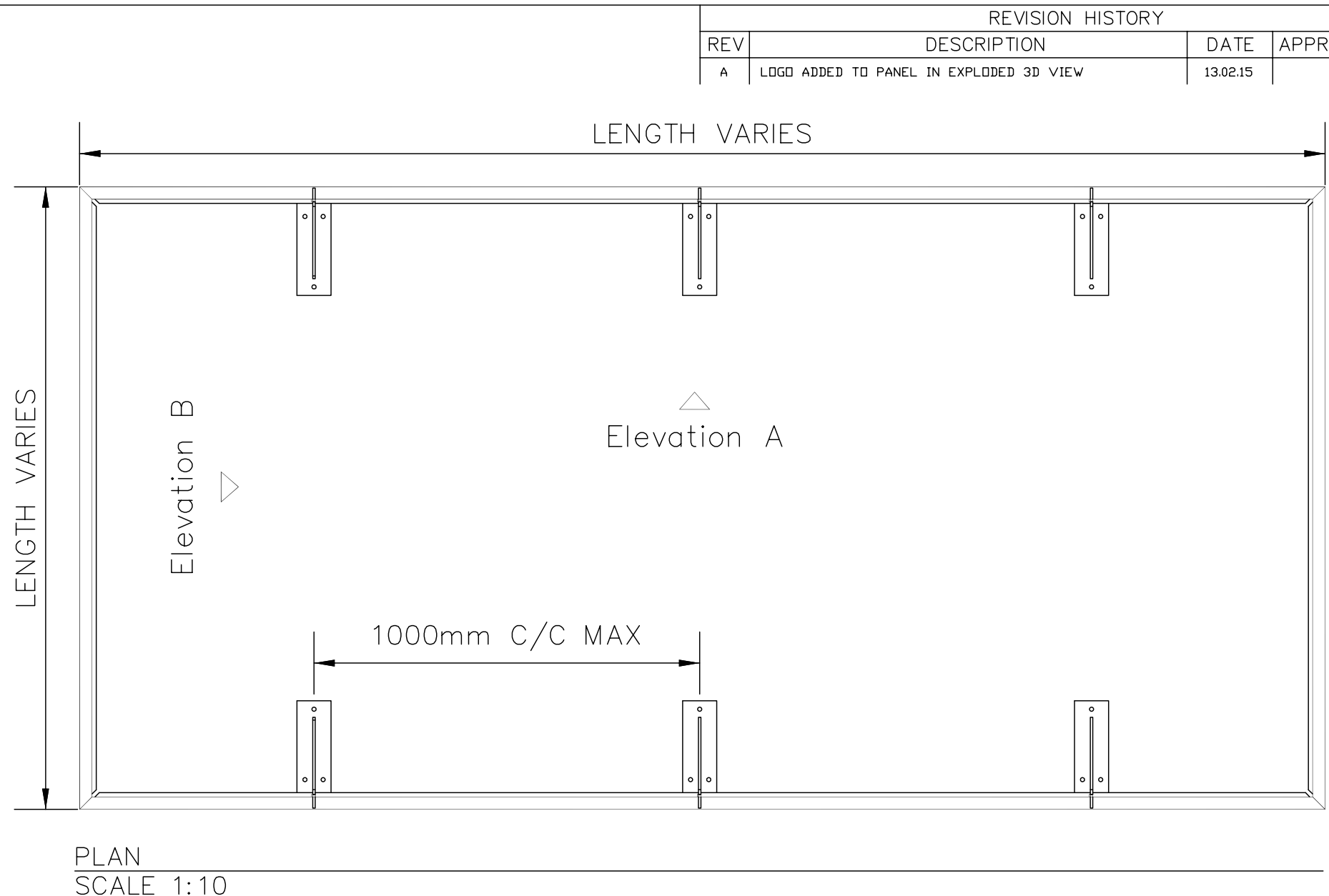
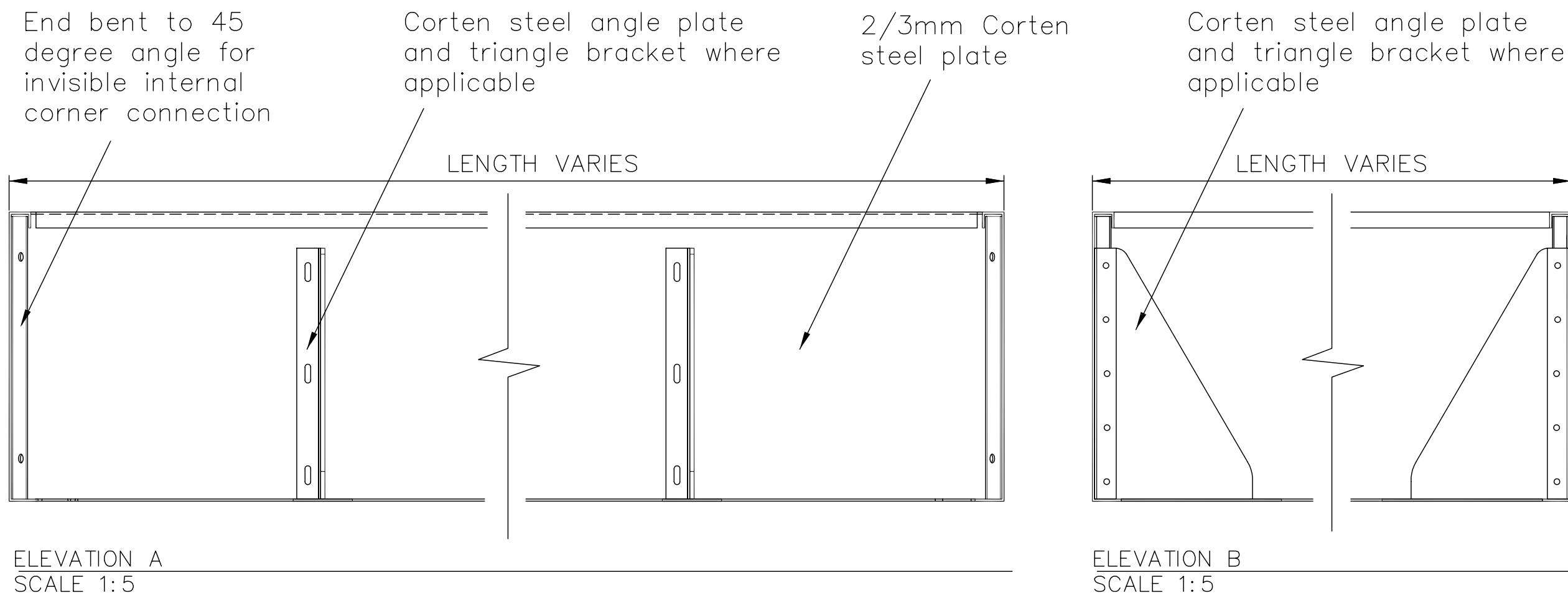
| Revisions | | | | |
|-----------|------|-------------|------------|------------|
| Rev | Date | Description | Revised by | Checked by |
| - | - | - | - | - |



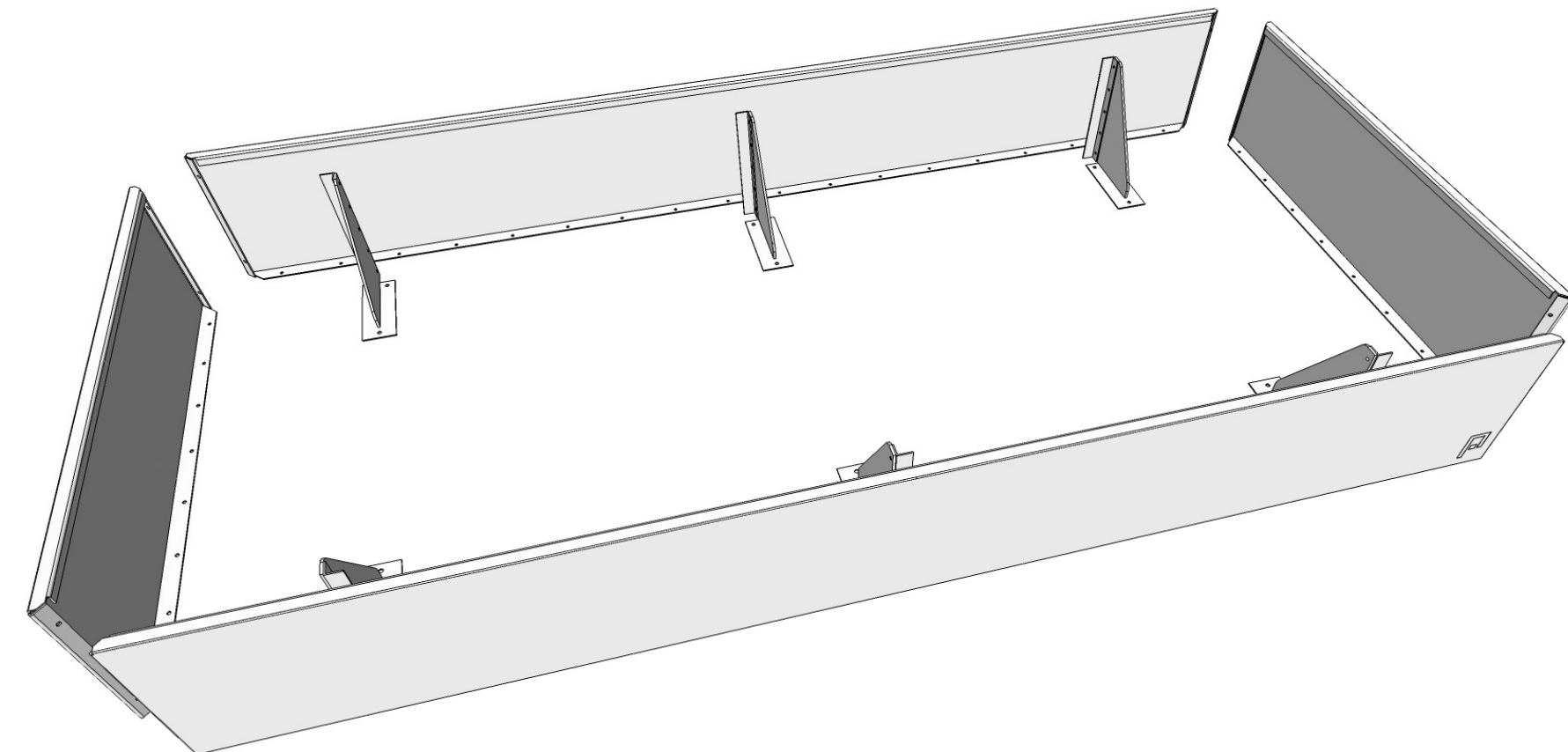
PLANNING

HAMPSTEAD GREEN
PEGASUSLIFE

| Typical Details - Timber Trellis | | | |
|----------------------------------|------------|-------------|------------|
| Drawing No. | Revision | Scale | Date |
| LL478-200-0245 | - | As Shown@A1 | 04.05.2018 |
| Drawn by | Checked by | | |
| JN | AN | | |



This drawing may not be copied or disclosed without permission from Kinley Systems.



EXPLODED 3D VIEW
NTS



| | | | |
|--|-------------------------------|---|-----------------------|
| NAME DATE | | Kinley Systems 3 Haywood Way, Hastings East Sussex TN34 4PL Tel: +44(0)1424 201 111 Fax: +44(0)1424 523 004 E-mail: sales@kinleystystems.com | |
| DRAWN C.JAUME 21/08/14 | TITLE | | |
| CHECKED | Perimeter Planterline | | |
| ENG APPR | Perimeter Planterline - Guide | | |
| MGR APPR | | | |
| UNLESS OTHERWISE SPECIFIED DIMENSIONS ARE IN MILLIMETRES 2 PL 4XXX 3 PL 4X XXX | | SIZE A1 DWG NO KIN-000000-000-000 SCALE: WEIGHT: | REV A SHEET 1 OF 1 |
| FILENAME: Perimeter Planterline_guide1_assembly.dwg | | | |

- ## NOTES
1. All dimensions in millimetres unless otherwise shown.
 2. All levels in metres above Ordnance Datum (mAOD) unless otherwise shown.
 3. All dimensions to be checked on site and any discrepancies reported to Employer before pricing / work starts.
 4. Any ambiguities or discrepancies within this drawing and any other information given elsewhere must be reported to Camlins and the Employer for clarification before pricing work proceeds.
 5. All drawings to be read in conjunction with other Camlins drawings and specification information as required.
 6. Return relevant Engineer's and Architect's work packages as appropriate for confirmation of all engineering and architectural details.
 7. All works to be carried out in accordance with the latest British Standards and appropriate codes of practice as a minimum.

Possible Supplier:
Northpoint,
Compass Park,
Junction Rd,
Bodiam,
East Sussex
TN32
Tel: 01424 201111
Email: sales@kinleysystems.com

Revisions

| Rev | Date | Description | Revised by | Checked by |
|-----|------------|--------------------|------------|------------|
| A | 04.05.2018 | - Details reviewed | JN | AN |

PLANNING

HAMPSTEAD GREEN
PEGASUSLIFE

Perimeta Planterline for Herb Garden

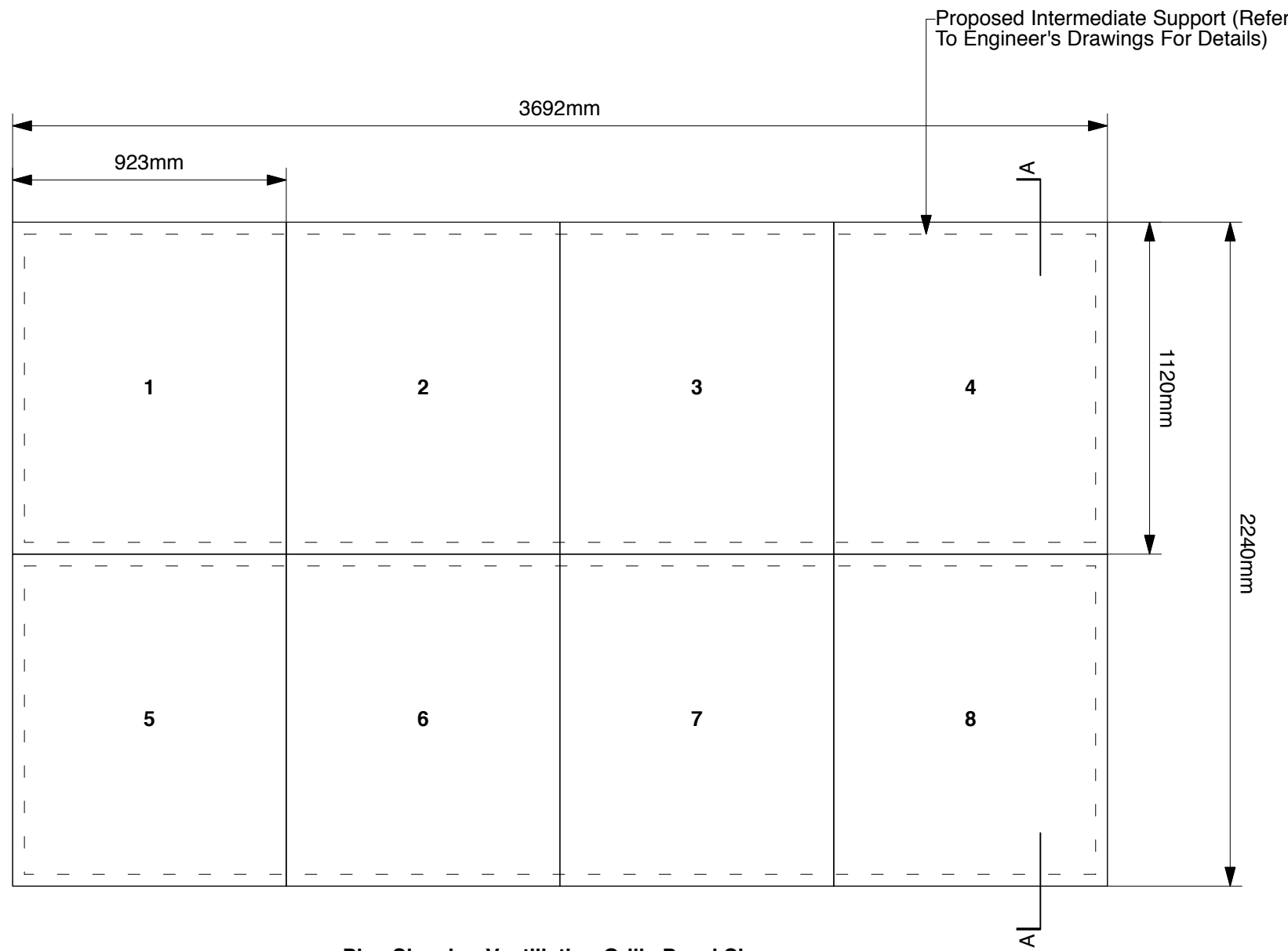
| | | | |
|-------------------------------|---------------|-----------------------|--------------------|
| Drawing No. LL478-200-0291 | Revision A | Scale Not To Scale | Date 22.12.2015 |
|-------------------------------|---------------|-----------------------|--------------------|

Drawn by
JS

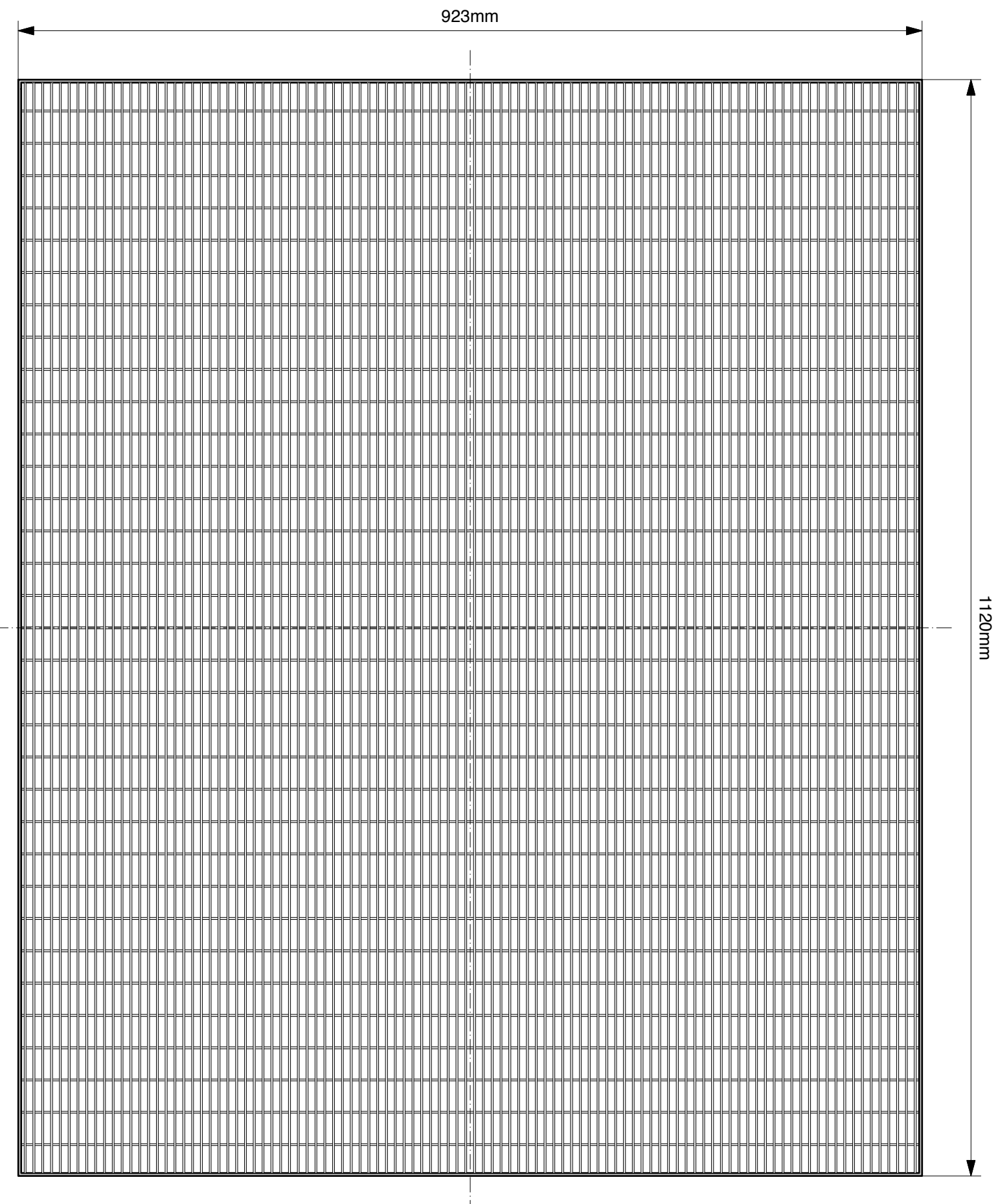
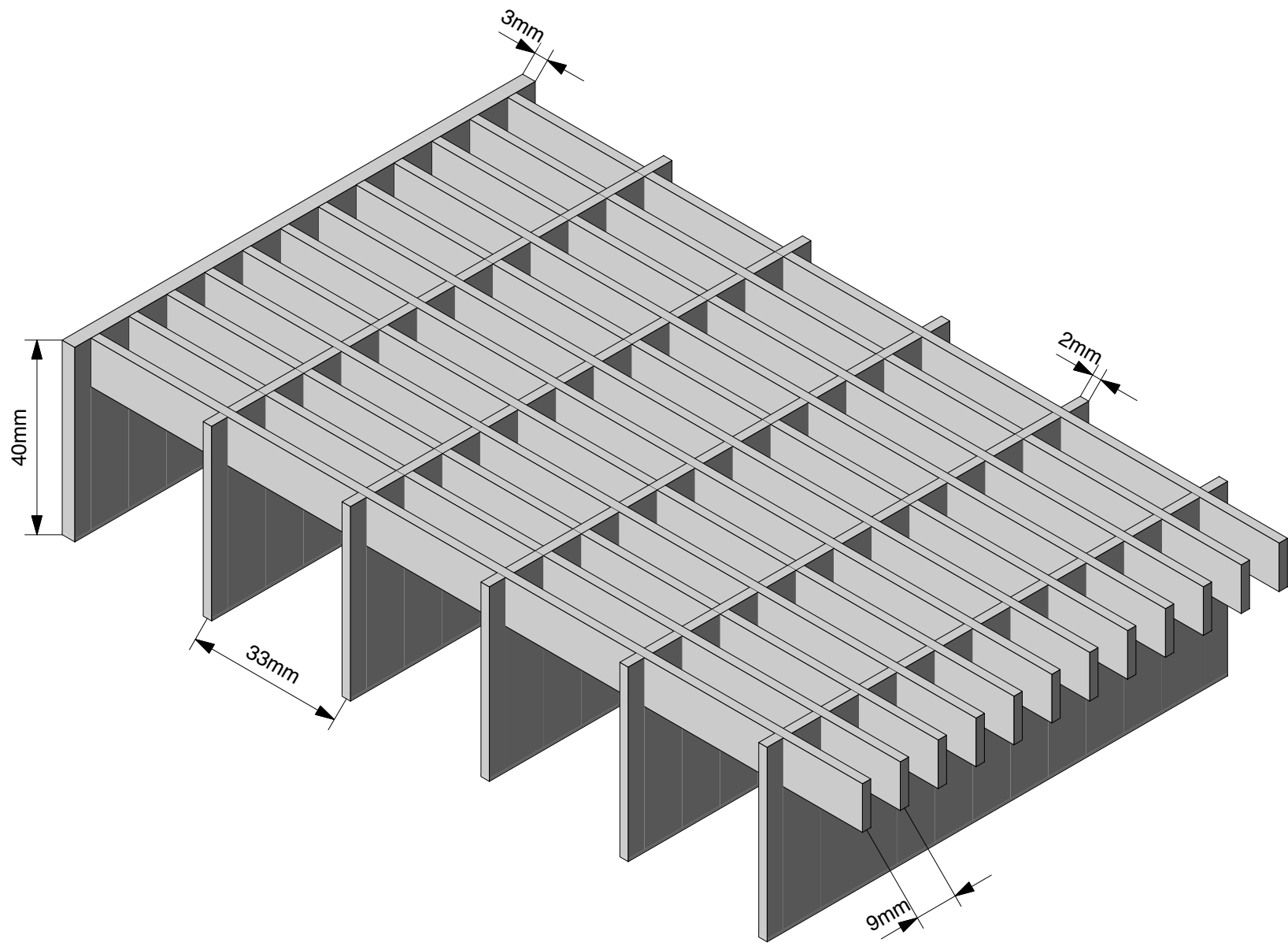
Checked by
AN

Camlins
Landscape Architects, New Dolanog House, Severn Road, Welshpool, Powys, SY21 7AP
Tel: 01938 554886 / studio@camlins.com / www.camlins.com

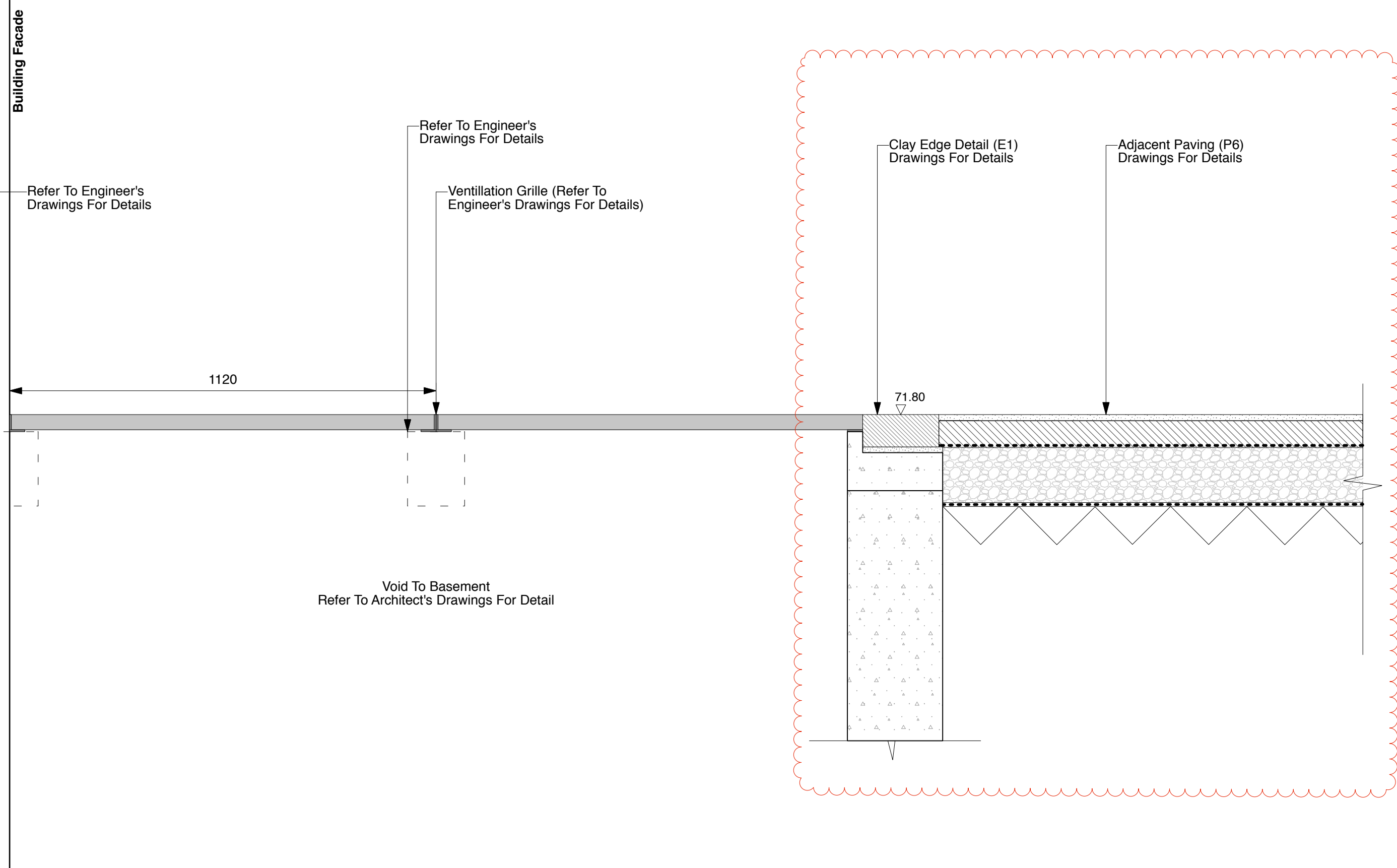
Camlins Ref: PEGASUS GENERAL/LL478 BARTRANS CONVENT/Camlins WorkDrawings/LL478-200-PLANNING [Ref.: LL478REF-200-LANDSCAPE BASE: LL478REF-200-DMA survey]



Plan Showing Ventilation Grille Panel Sizes
Scale: 1:20 at A1



Plan Detail Of Ventilation Grille Proposed Panel
Scale: 1:5 at A1



Typical Section Through Ventilation Grille
Scale: 1:10 at A1

- NOTES**
1. All dimensions in millimetres unless otherwise shown.
 2. All levels in metres above Ordinance Datum (mAOD) unless otherwise shown.
 3. All dimensions to be checked on site and any discrepancies reported to Employer before pricing / work starts.
 4. Any ambiguities or discrepancies within this drawing and any other information given elsewhere must be reported to Camlins and the Employer for clarification before pricing work proceeds.
 5. All drawings to be read in conjunction with other Camlins drawings and specification information as required.
 6. Refer to relevant Engineer's and Architect's work packages as appropriate for confirmation of all engineering and architectural details.
 7. All works to be carried out in accordance with the latest British Standards and appropriate codes of practice as a minimum.

NOTES

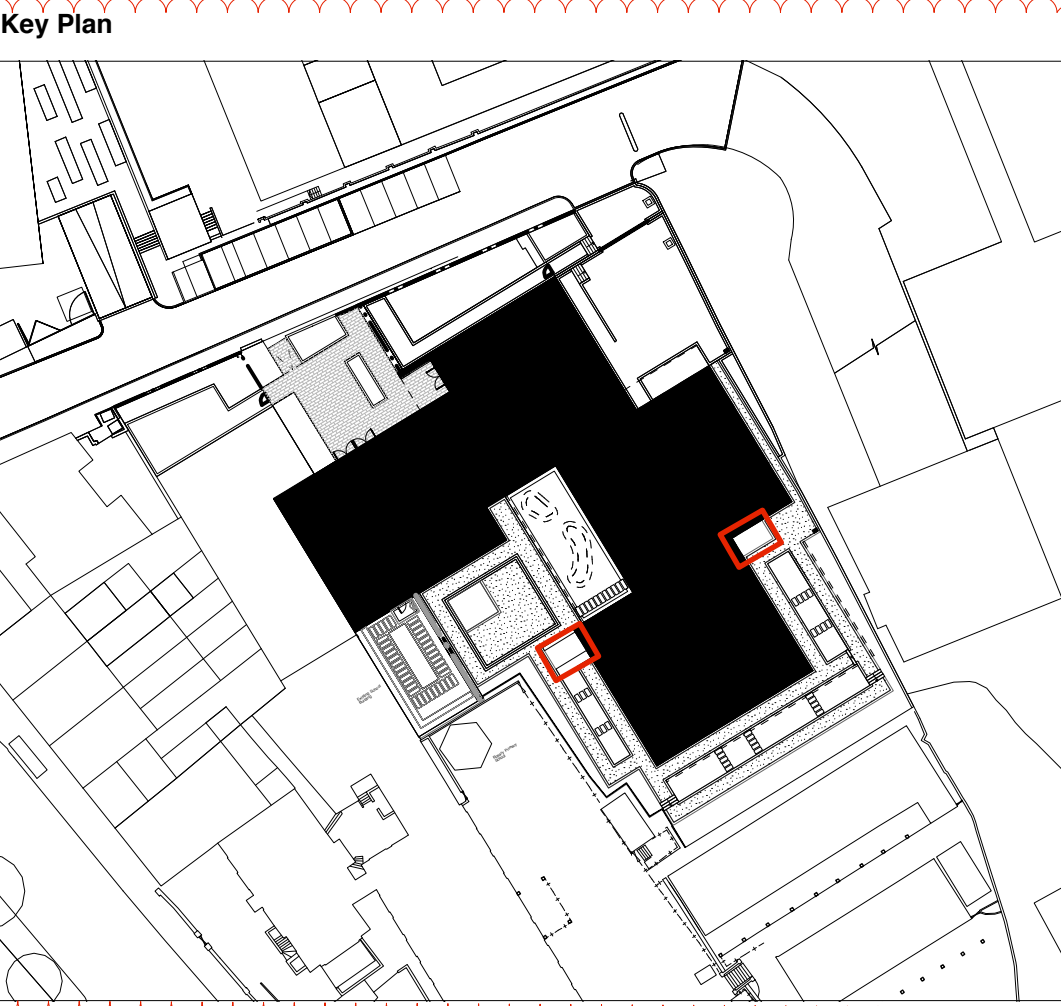
| DESCRIPTION | QTY | NOTES |
|--|--------|------------------------------|
| Carbon Steel Polyester Powder Coated Panel | 16 No. | Serrated Edge To Top Surface |

POSSIBLE SUPPLIER
ELEFANT GRATINGS LTD
UNIT 9 INVICTA BUSINESS PARK,
LONDON ROAD,
WROTHAM,
KENT
TN15 7RJ
Email: sales@elefantgratings.com
Tel: 01732 884123

POWDER COATED STEEL LOUVER
Louvers to S235JRG to EN10025-2:2004 formed from:
- Mesh - 9 x 31mm - 33mm Bearing Bar Centres
- Bars - 40 x 2mm - Type SP
- Edge - 40 x 3mm To All For Sides Including Four Welded Fixing Plates / Panels
- Weight - 43KG m2

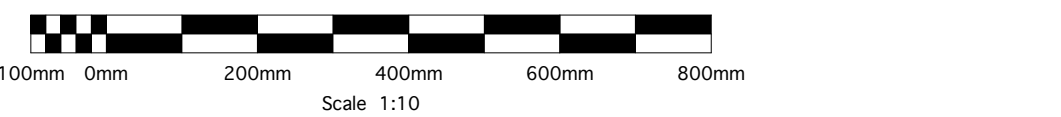
Fixing Details To Be Confirmed By Manufacturer And Submitted For Approval Prior To Installation. Refer To Engineer's details For Confirmation Of Structural Supports. All Louvers To Be Installed To Adjacent Paving Finishes.

FABRICATION DRAWINGS AND SETTING OUT:
Close Mesh Louver Manufacturer To Produce Fabrication Drawings For Approval By Employer Based Upon Details And Dimensions Shown. Initial Sample Panel To Be Made Available For Inspection And Comment By Employer In Advance Of Full Production And Delivery.



Revisions

| Rev | Date | Description | Revised by | Checked by |
|-----|------------|---|------------|------------|
| A | 04.05.2018 | - Section details changed, key plan updated | JN | AN |



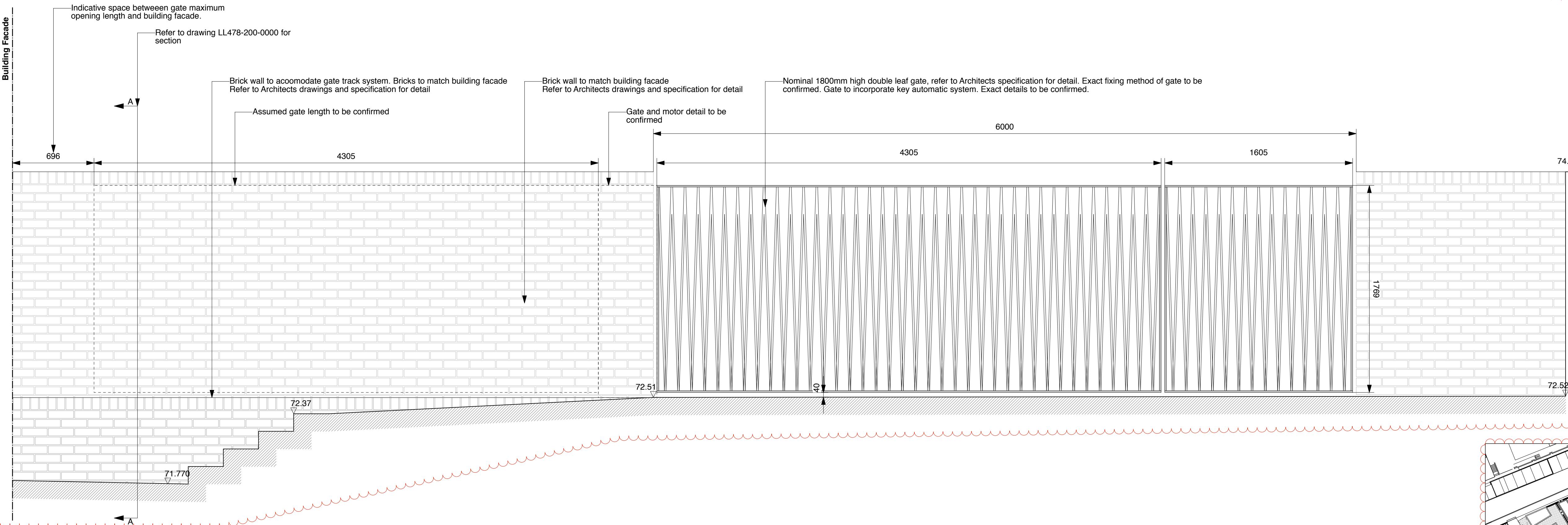
PLANNING
HAMPSTEAD GREEN
PEGASUSLIFE

Lower Ground Landscape Plan - Typical Ventilation Grille Detail

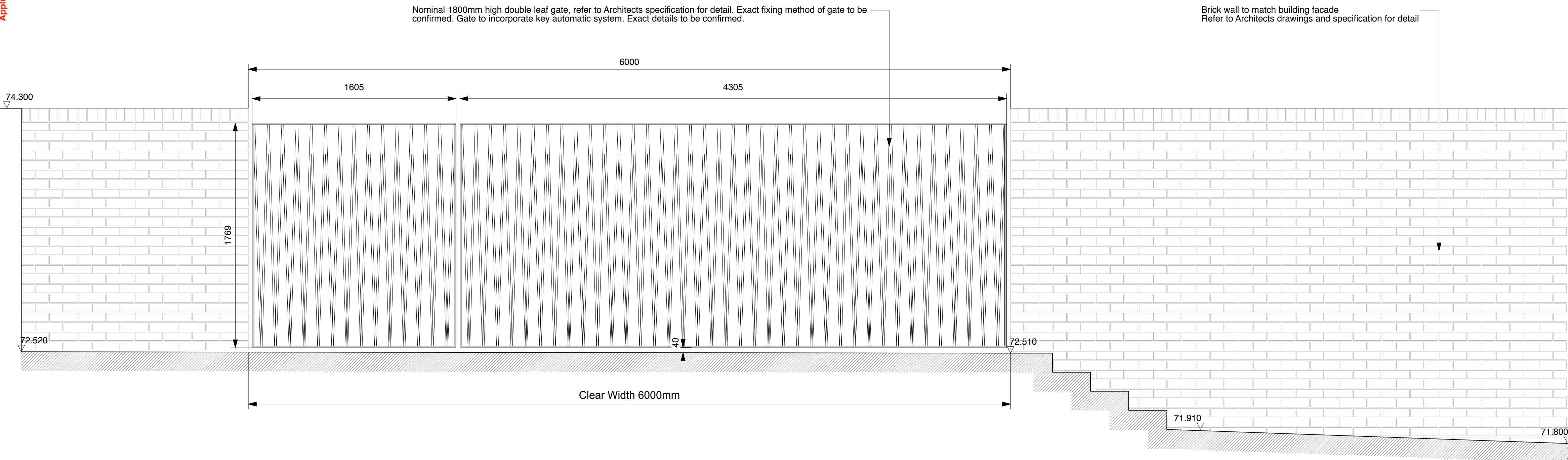
| Drawing No. | Revision | Scale | Date |
|----------------|---------------|-----------|------------|
| LL478-200-0293 | A | Varies@A1 | 22.12.2015 |
| Drawn by JS | Checked by AN | | |

Camlins
Landscape Architects, New Dolanog House, Severn Road, Welshpool, Powys, SY21 7AP
Tel: 01938 554886 / studio@camlins.com / www.camlins.com

Camlins Ref: PEGASUS GENERAL/LL478 BARTRANS CONVENT/Camlins WorkDrawings/LL478-200-PLANNING. [Ref: LL478REF-200-LANDSCAPE BASE, LL478REF-200-DMA survey]

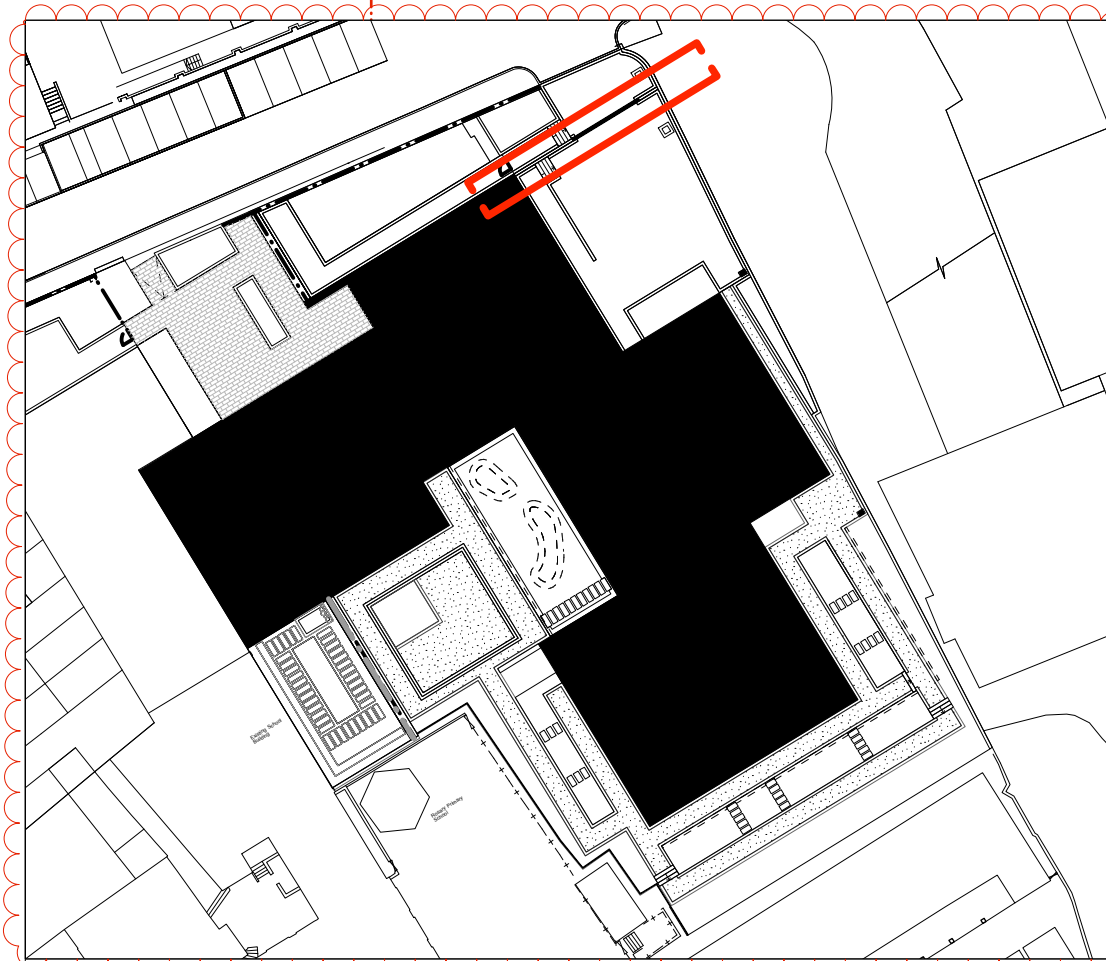


Automated Gates (Elevation A-A)
Scale 1:20



NOTES

1. All dimensions in millimetres unless otherwise shown.
2. All levels in metres above Ordinance Datum (mAOD) unless otherwise shown.
3. All dimensions to be checked on site and any discrepancies reported to Employer before pricing / work starts.
4. Any ambiguities or discrepancies within this drawing and any other information given elsewhere must be reported to Camlins and the Employer for clarification before pricing work proceeds.
5. All drawings to be read in conjunction with other Camlins drawings and specification information as required.
6. Refer to relevant Engineer's and Architect's work packages as appropriate for confirmation of all engineering and architectural details.
7. All works to be carried out in accordance with the latest British Standards and appropriate codes of practice as a minimum.

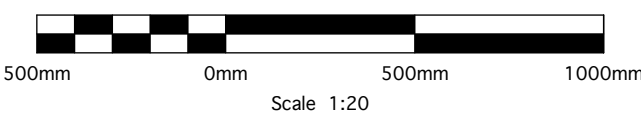


NOTES

STEEL GATES
1800mm high gate, gates to match railings. Refer to Architects specification for detail, fabrication drawings and setting out.
Gate manufacturer to produce fabrication drawings for approval by employer based upon details and dimensions shown. Initial sample panel to be made available for inspection and comment by employer in advance of full production and delivery to site.
Gate to incorporate electric key automatic system

Revisions

| Rev | Date | Description | Revised by | Checked by |
|-----|------------|---|------------|------------|
| A | 04.05.2018 | - Key plan updated, levels updated, dimension added | JN | AN |



PLANNING

HAMPSTEAD GREEN
PEGASUSLIFE

Automated Gates

| Drawing No. | Revision | Scale | Date |
|----------------|------------|---------|------------|
| LL478-200-0294 | A | 1:20@A1 | 22.12.2015 |
| Drawn by | Checked by | | |
| JS | AN | | |

Camlins

Landscape Architects, New Dolanog House, Severn Road, Welshpool, Powys, SY21 7AP
Tel: 01938 554886 / studio@camlins.com / www.camlins.com