

Camlins Ref: PEGASUS GENERAL/LL478 BARTRANS CONVENT/Camlins Work/Drawings/LL478-200-PLANNING [Ref: LL478REF-200-LANDSCAPE BASE: LL478REF-200-DMA Survey]



- NOTES**
1. All dimensions in millimetres unless otherwise shown.
 2. All levels in metres above Ordinance Datum (mAOD) unless otherwise shown.
 3. All dimensions to be checked on site and any discrepancies reported to Employer before pricing / work starts.
 4. Any ambiguities or discrepancies within this drawing and any other information given elsewhere must be reported to Camlins and the Employer for clarification before pricing work proceeds.
 5. All drawings to be read in conjunction with other Camlins drawings and specification information as required.
 6. Refer to relevant Engineer's and Architect's work packages as appropriate for confirmation of all engineering and architectural details.
 7. All works to be carried out in accordance with the latest British Standards and appropriate codes of practice as a minimum.

- KEY**
- Application Boundary
 - Proposed Trees
 - Planting
 - Brick Wall
 - Railings

Revisions

Rev	Date	Description	Revised by	Checked by
A	04.05.2018	- Layout amended	JN	AN



PLANNING

HAMPSTEAD GREEN
PEGASUSLIFE

General Arrangement - Ground Level Landscape Plan

Drawing No. LL478-200-0021	Revision A	Scale 1:200@A1	Date 22.05.2015
Drawn by SB	Checked by AN		

Camlins
Landscape Architects, New Dolanog House, Severn Road, Welshpool, Powys, SY21 7AP
Tel: 01938 554886 / studio@camlins.com / www.camlins.com

Camlins Ref: PEGASUS GENERAL/LL478 BARTRANS CONVENT/Camlins Work/Drawings/LL478-200-PLANNING [Ref.: LL478REF-200-LANDSCAPE BASE; LL478REF-200-DMA Survey]



NOTES

1. All dimensions in millimetres unless otherwise shown.
2. All levels in metres above Ordinance Datum (mAOD) unless otherwise shown.
3. All dimensions to be checked on site and any discrepancies reported to Employer before pricing / work starts.
4. Any ambiguities or discrepancies within this drawing and any other information given elsewhere must be reported to Camlins and the Employer for clarification before pricing work proceeds.
5. All drawings to be read in conjunction with other Camlins drawings and specification information as required.
6. Refer to relevant Engineer's and Architect's work packages as appropriate for confirmation of all engineering and architectural details.
7. All works to be carried out in accordance with the latest British Standards and appropriate codes of practice as a minimum.

KEY

Application Boundary

Proposed Trees

Cs

Tree species as indicated on schedule

TREE PLANTING SCHEDULE

Ref	Botanical name	Girth	Quantity	Notes
PTH	Prunus 'Tai Haku'	20-25	3	
Buj	Betula utilis jacquemontii 'Doorenbos' 'Grayswood Ghost'	18-20	2	Multi-Stem

Revisions

Rev	Date	Description	Revised by	Checked by
A	04.05.2018	- Layout amended	JN	AN

5m

0m

5m

10m

Scale 1:200

N

PLANNING

HAMPSTEAD GREEN
PEGASUSLIFE

General Arrangement - Ground Level Tree Planting Plan

Drawing No.
LL478-200-0023

Revision
A

Scale
1:200@A1

Date
22.12.2015

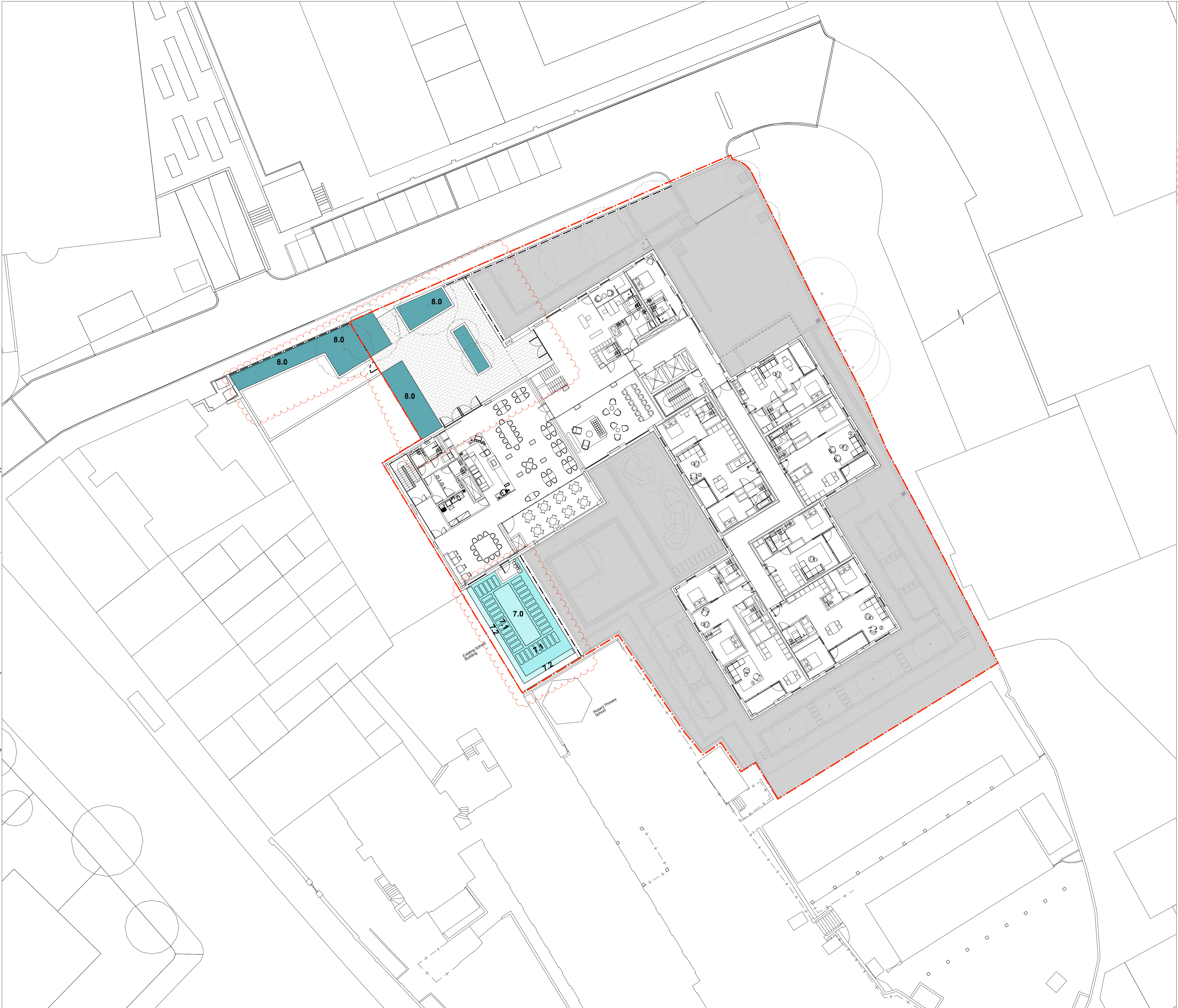
Drawn by
SB

Checked by
AN

Camlins

Landscape Architects, New Dolanog House, Severn Road, Welshpool, Powys, SY21 7AP
Tel: 01938 554886 / studio@camlins.com / www.camlins.com

Camlins Ref. PEGASUS GENERAL/LL478 BARTRANS CONVENT/Camlins Work/Drawings/LL478-200-PLANNING [Ref.: LL478REF-200-LANDSCAPE BASE; LL478REF-200-DMA Survey]



NOTES

1. All dimensions in millimetres unless otherwise shown.
2. All levels in metres above Ordinance Datum (mAOD) unless otherwise shown.
3. All dimensions to be checked on site and any discrepancies reported to Employer before pricing / work starts.
4. Any ambiguities or discrepancies within this drawing and any other information given elsewhere must be reported to Camlins and the Employer for clarification before pricing work proceeds.
5. All drawings to be read in conjunction with other Camlins drawings and specification information as required.
6. Refer to relevant Engineer's and Architect's work packages as appropriate for confirmation of all engineering and architectural details.
7. All works to be carried out in accordance with the latest British Standards and appropriate codes of practice as a minimum.

KEY

	Application Boundary
	Herb And Kitchen Garden Refer to plant schedule 7.0
	Herb And Kitchen Garden Refer to plant schedule 7.1
	Herb And Kitchen Garden Refer to plant schedule 7.2
	Front Grasses And Evergreen Shrubs Refer to plant schedule 8.0

Revisions

Rev	Date	Description	Revised by	Checked by
A	04.05.2018	- Planting area labels changed, landscape layout updated	JN	AN

Scale 1:200

PLANNING

HAMPSTEAD GREEN
PEGASUSLIFE

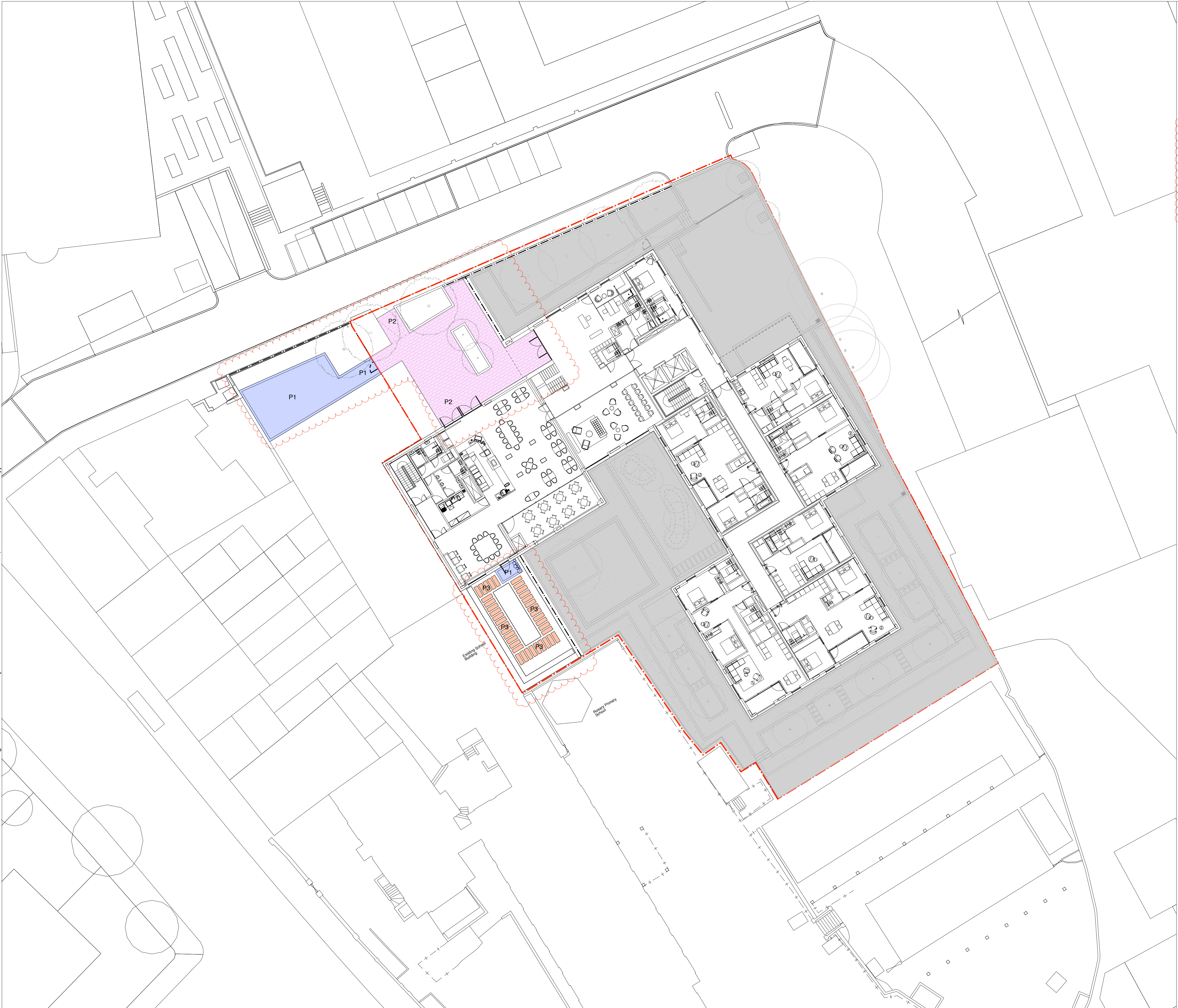
General Arrangement - Ground Level Planting Plan

Drawing No.	Revision	Scale	Date
LL478-200-0024	A	1:200@A1	22.12.2015

Drawn by	Checked by
SB	AN

Landscape Architects, New Dolanog House, Severn Road, Welshpool, Powys, SY21 7AP
Tel: 01938 554886 / studio@camlins.com / www.camlins.com

Camlins Ref. PEGASUS GENERAL/LL478 BARTRANS CONVENT/Camlins Work/Drawings/LL478-200-PLANNING [Ref.: LL478REF-200-LANDSCAPE BASE; LL478REF-200-DMA Survey]



NOTES

1. All dimensions in millimetres unless otherwise shown.
2. All levels in metres above Ordinance Datum (mAOD) unless otherwise shown.
3. All dimensions to be checked on site and any discrepancies reported to Employer before pricing / work starts.
4. Any ambiguities or discrepancies within this drawing and any other information given elsewhere must be reported to Camlins and the Employer for clarification before pricing work proceeds.
5. All drawings to be read in conjunction with other Camlins drawings and specification information as required.
6. Refer to relevant Engineer's and Architect's work packages as appropriate for confirmation of all engineering and architectural details.
7. All works to be carried out in accordance with the latest British Standards and appropriate codes of practice as a minimum.

KEY

	Application Boundary
	Dutch Clay 'Padova' Pavers (P1) Refer to LL478-200-0201
	'Mandana Red' Sandstone stretcherbond pattern (P2) Refer to LL478-200-0201
	Dutch Clay 'Padova' Paving Stepping Stone (P3) Refer to LL478-200-0201

Revisions

Rev	Date	Description	Revised by	Checked by
A	04.05.2018	- Paving amended based on new layout. Paving (P2) changed to 'Mandana Red' sandstone	JN	AN

Scale 1:200

PLANNING

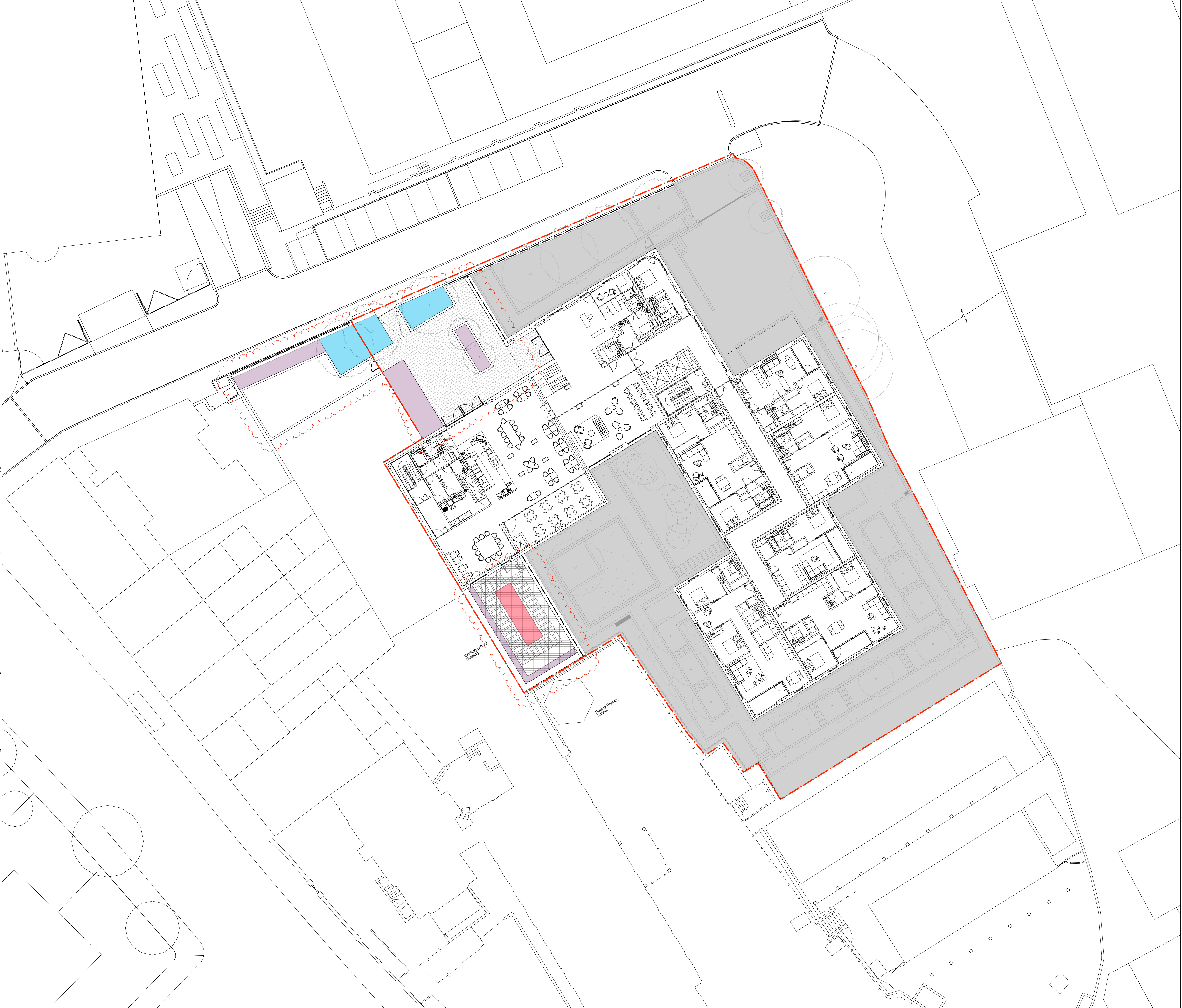
HAMPSTEAD GREEN
PEGASUSLIFE

General Arrangement - Ground Level Paving Arrangement

Drawing No. LL478-200-0025	Revision A	Scale 1:200@A1	Date 22.12.2015
Drawn by SB	Checked by AN		

Landscape Architects, New Dolanog House, Severn Road, Welshpool, Powys, SY21 7AP
Tel: 01938 554886 / studio@camlins.com / www.camlins.com

Camlins Ref: PEGASUS GENERAL/LL478 BARTRANS CONVENT/Camlins Work/Drawings/LL478-200-PLANNING [Ref.: LL478REF-200-LANDSCAPE BASE; LL478REF-200-DMA Survey]



- NOTES**
1. All dimensions in millimetres unless otherwise shown.
 2. All levels in metres above Ordinance Datum (mAOD) unless otherwise shown.
 3. All dimensions to be checked on site and any discrepancies reported to Employer before pricing / work starts.
 4. Any ambiguities or discrepancies within this drawing and any other information given elsewhere must be reported to Camlins and the Employer for clarification before pricing work proceeds.
 5. All drawings to be read in conjunction with other Camlins drawings and specification information as required.
 6. Refer to relevant Engineer's and Architect's work packages as appropriate for confirmation of all engineering and architectural details.
 7. All works to be carried out in accordance with the latest British Standards and appropriate codes of practice as a minimum.

KEY

- Application Boundary
- Green Roof, refer to typical details
- 450mm depth
- 600mm depth
- 1000mm depth

Revisions

Rev	Date	Description	Revised by	Checked by
A	04.05.2018	- Landscape amended	JN	AN



PLANNING

HAMPSTEAD GREEN
PEGASUSLIFE

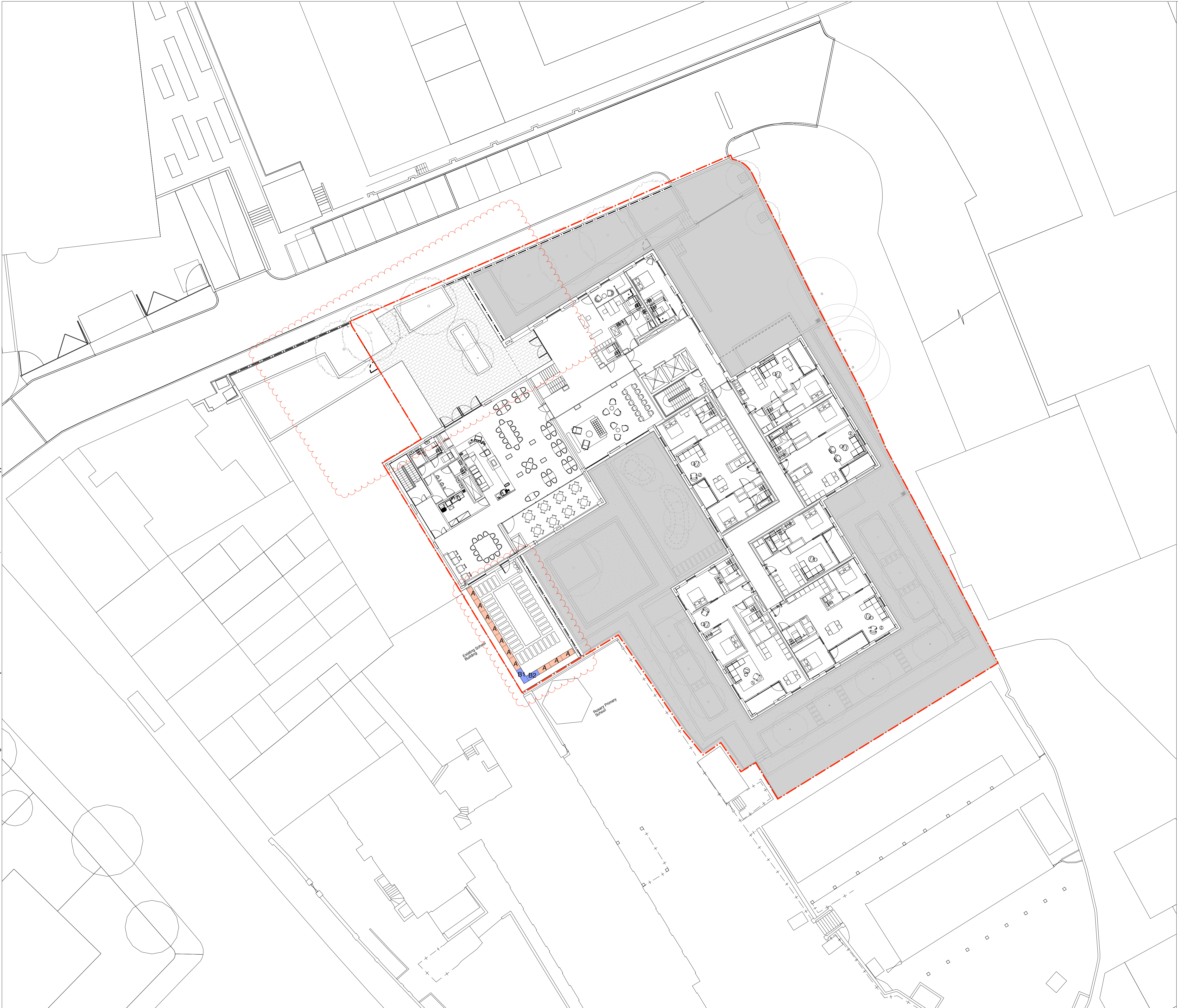
General Arrangement - Ground Level Soil Depths

Drawing No.	Revision	Scale	Date
LL478-200-0028	A	1:200@A1	22.12.2015
Drawn by SB	Checked by AN		

Camlins

Landscape Architects, New Dolanog House, Severn Road, Welshpool, Powys, SY21 7AP
Tel: 01938 554886 / studio@camlins.com / www.camlins.com

Camlins Ref: PEGASUS GENERAL/LL478 BARTRANS CONVENT/Camlins Work/Drawings/LL478-200-PLANNING [Ref.: LL478REF-200-LANDSCAPE BASE; LL478REF-200-DMA Survey]



NOTES

1. All dimensions in millimetres unless otherwise shown.
2. All levels in metres above Ordinance Datum (mAOD) unless otherwise shown.
3. All dimensions to be checked on site and any discrepancies reported to Employer before pricing / work starts.
4. Any ambiguities or discrepancies within this drawing and any other information given elsewhere must be reported to Camlins and the Employer for clarification before pricing work proceeds.
5. All drawings to be read in conjunction with other Camlins drawings and specification information as required.
6. Refer to relevant Engineer's and Architect's work packages as appropriate for confirmation of all engineering and architectural details.
7. All works to be carried out in accordance with the latest British Standards and appropriate codes of practice as a minimum.

KEY

Application Boundary Line

600m x 1.5m Raised Modular Planter

Bespoke Raised Modular Planters (Size Varies)

PLANTER MODULE SCHEDULE		
Type:	Size (mm):	Quantity:
A	600 x 1500 x 600	10
B1	600 x 1410 x 600	1
B2	600 x 1675 x 600	1

Module sizes are indicative sizes to be confirmed prior to fabrication.

NOTES:

RAISED MODULAR PLANTERS:
Possible Supplier:
Kinley Systems
Haywood Way,
Hastings,
East Sussex,
England,
TN35 4PL
Tel: 01424 201111
Email: sales@kinleysystems.com

Growing Medium:
Raised planters to be backfilled with minimum 600mm depth lightweight growing medium. Lightweight growing medium to be a blend of topsoil to BS 3882 with the addition of a lightweight expanded aggregate topsoil to be well structured sandy loam free from stones etc.

Planter depths to be 600mm.

Revisions				
Rev	Date	Description	Revised by	Checked by
A	04.05.2018	- Layout amended	SB	AN

5m

0m

5m

10m

Scale 1:200

N

PLANNING

HAMPSTEAD GREEN
PEGASUSLIFE

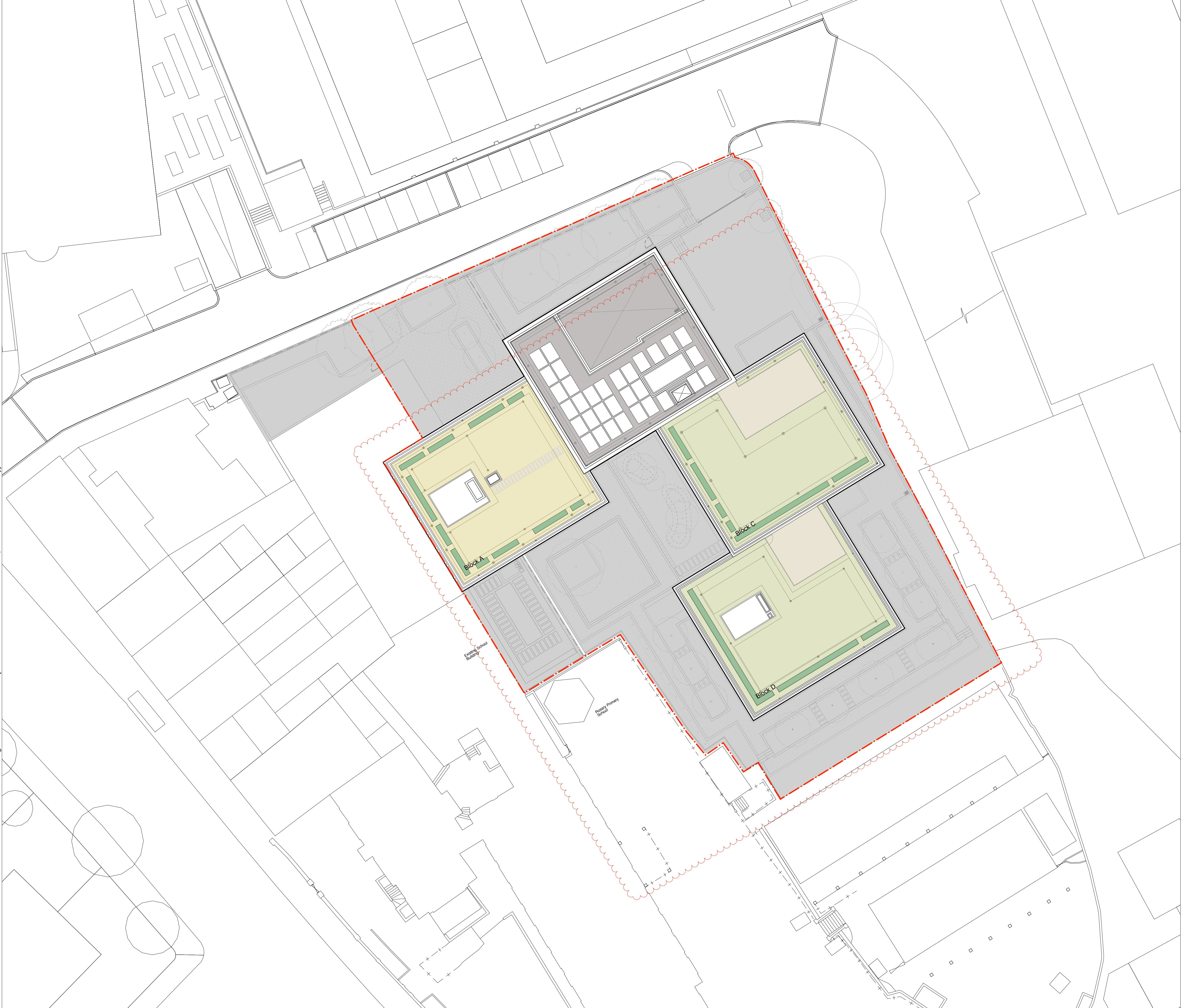
General Arrangement - Ground Level Planter Layout

Drawing No. LL478-200-0030	Revision A	Scale 1:200@A1	Date 22.12.2015
Drawn by SB	Checked by AN		

Camlins

Landscape Architects, New Dolanog House, Severn Road, Welshpool, Powys, SY21 7AP
Tel: 01938 554886 / studio@camlins.com / www.camlins.com

Camlins Ref: PEGASUS GENERAL/LL478 BARTRANS CONVENT/Camlins Work/Drawings/LL478-200-PLANNING [Ref: LL478REF-200-LANDSCAPE BASE; LL478REF-200-DMA Survey]



- NOTES**
1. All dimensions in millimetres unless otherwise shown.
 2. All levels in metres above Ordinance Datum (mAOD) unless otherwise shown.
 3. All dimensions to be checked on site and any discrepancies reported to Employer before pricing / work starts.
 4. Any ambiguities or discrepancies within this drawing and any other information given elsewhere must be reported to Camlins and the Employer for clarification before pricing work proceeds.
 5. All drawings to be read in conjunction with other Camlins drawings and specification information as required.
 6. Refer to relevant Engineer's and Architect's work packages as appropriate for confirmation of all engineering and architectural details.
 7. All works to be carried out in accordance with the latest British Standards and appropriate codes of practice as a minimum.

KEY:

- Stone Paving
- Block A: Green Roof - Extensive
- Block C: Green Roof - Semi-intensive
- Block D: Green Roof - Semi-intensive
- Proposed Planters
Refer to drawing LL478-200-0047

Possible Supplier For Green Roofs
Blackdown Horticultural Consultants Ltd
Street Ash Nursery,
Lisieux Way,
Combe, St Nicholas,
Chard,
Somerset,
TA20 3AZ
01460 234582

Revisions				
Rev	Date	Description	Revised by	Checked by
A	04.05.2018	- Layout amended	JN	AN



PLANNING
HAMPSTEAD GREEN
PEGASUSLIFE

General Arrangement - Green Roof Landscape Plan

Drawing No.	Revision	Scale	Date
LL478-200-0041	A	1:200@A1	22.12.2015
Drawn by SB	Checked by AN		

Camlins
Landscape Architects, New Dolanog House, Severn Road, Welshpool, Powys, SY21 7AP
Tel: 01938 554886 / studio@camlins.com / www.camlins.com