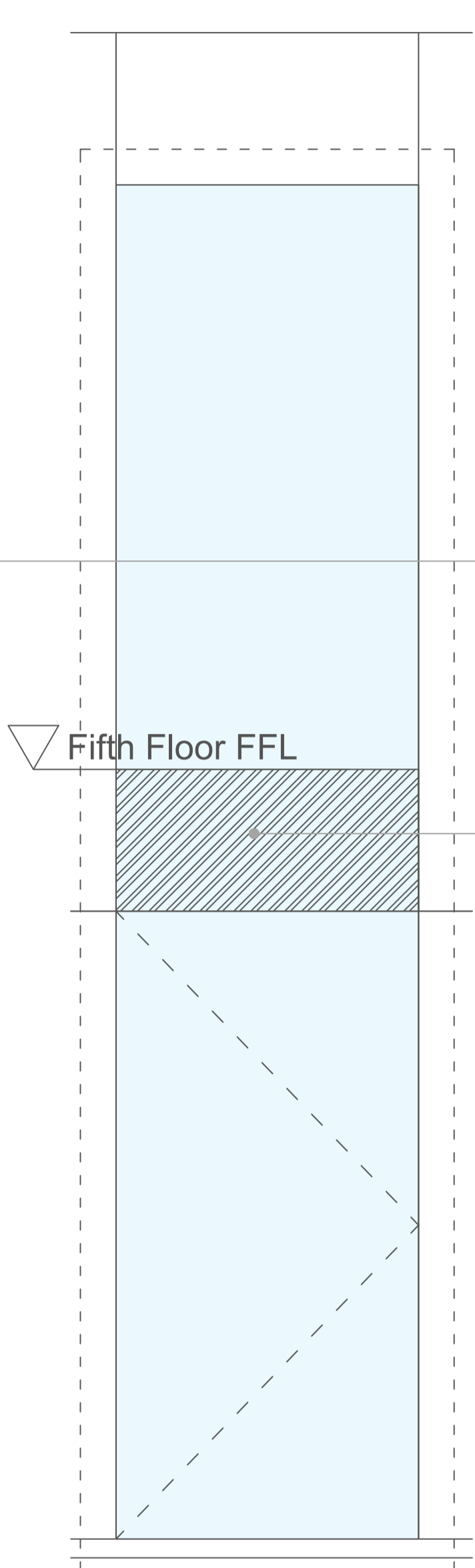
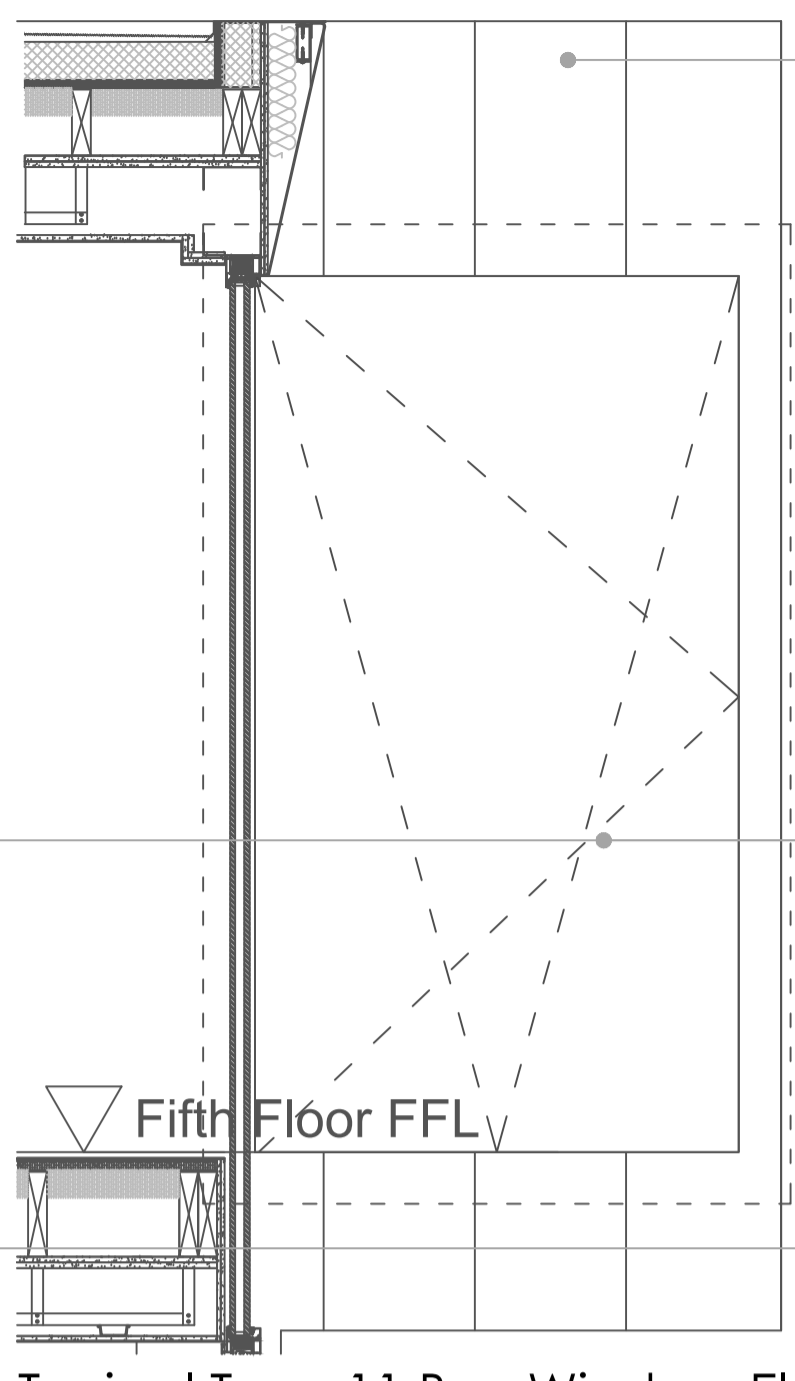


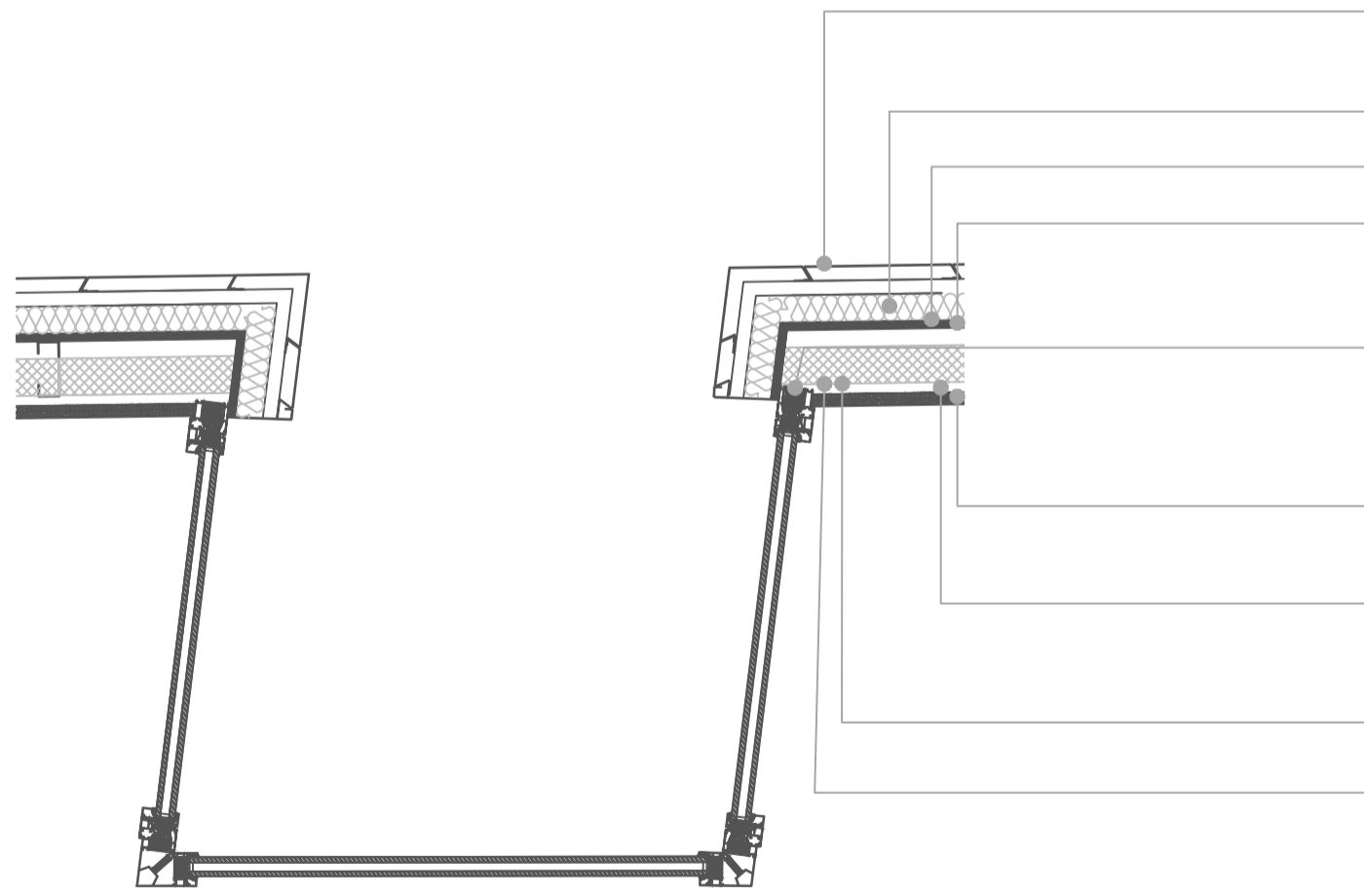
Typical Type 11 Bay Window Elevation (Right) 1:20 @ A1



Typical Type 11 Bay Window Elevation (principal) 1:20 @ A1

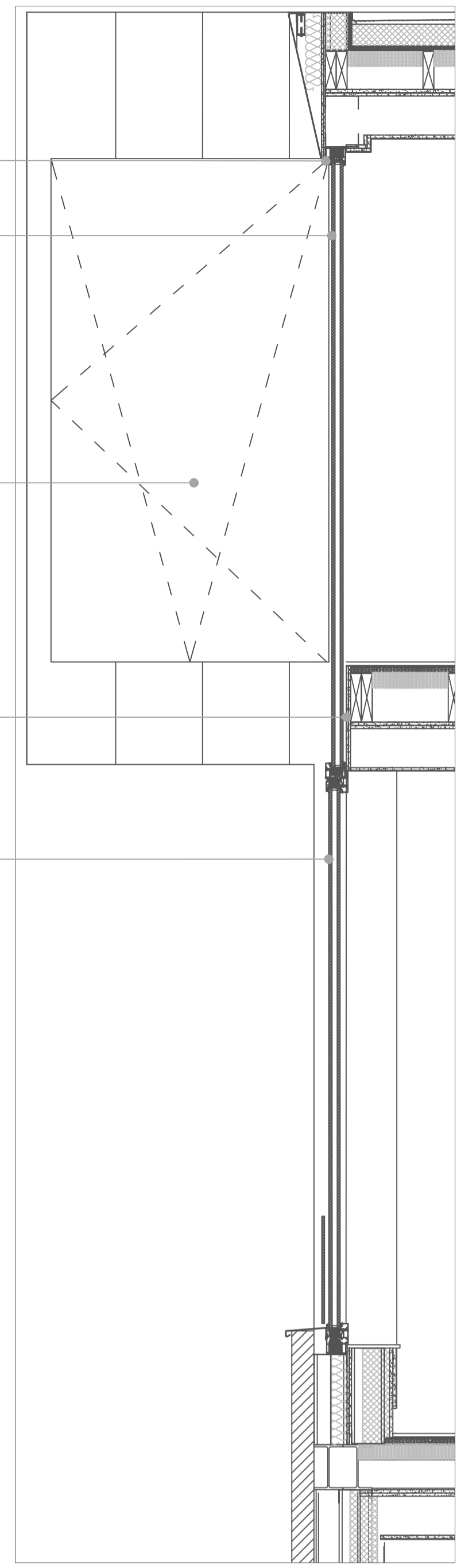


Typical Type 11 Bay Window Elevation (Left) 1:20 @ A1



Typical Type 11 Window Plan showing Jamb 1:20 @ A1

- Fourth and Fifth story extensions to use Natural Anodised Aluminium cladding, see accompanying manufacturers details for fixings.
- Window frames to be visually concealed behind Anodised Aluminium cladding.
- Fixed shut window glazing to meet standards set out in acoustic engineers report, Glazing to provide  $R_{63Hz}$  31 dB and  $R_{125Hz}$  33 dB performance.
- Openable window glazing to meet standards set out in acoustic engineers report, Glazing to provide  $R_{63Hz}$  23 dB and  $R_{125Hz}$  25 dB performance.
- Window glazing to be back painted in this area to conceal floor build up behind.
- Openable window glazing to meet standards set out in acoustic engineers report, Glazing to provide  $R_{63Hz}$  23 dB and  $R_{125Hz}$  25 dB performance.



Typical Type 11 Window Section showing Head and Sill 1:20 @ A1

- 3mm Natural Anodised Aluminium cladding with secret fixing.
- 75 mm Acoustic Insulation.
- Vapour barrier
- 2 x 10mm Cementitious boards.
- Window Frames to be visually concealed behind anodised aluminium cladding.
- 2 x 15mm Plasterboard with 3mm skim plaster finish.
- 25mm Acoustic insulation with acoustic isolator track, fixed to floor and soffit.
- 100mm Thermal insulation
- Infill Structural Framing System.

NOTES

- Do not scale off these drawings. Dimensions govern.
- All dimensions are given in millimetres (mm) unless otherwise noted.
- All dimensions shall be verified on site before proceeding with the work contractor before construction and fabrication commences.
- Workmanship and materials to be accordance with the relevant current British Standard Codes of Practice and the Local Authorities requirements.
- During construction the contractor shall be responsible for maintaining the structure in a stable condition.
- These drawings are to be read in conjunction with all other contract documentation and other consultants documentation.
- If in doubt, ask!

Rev	Date	Reason for Issue	ch'd
PL-02	18-04-2018	Planning Conditions	AK
PL-01	05-03-2018	Planning Conditions	JG
PL-00	01-02-2018	Planning Conditions	JG


**ambigram architects**

The studio, 5 Great James Street, Bloomsbury  
London WC1N 3DB

www.ambigramarchitects.com  
info@ambigramarchitects.com

© Copyright 2015 ambigram architects ltd

**Bayham Place** 48-56 Bayham Place  
London NW1 0EU

Project

**Condition 4 - Window Type 11**

Title

AA-A-1702 JP PL-02  
Job number Drawn Revision

July 2017  
Date 1:20 @A1

0810 1:40 @A3  
Drawing no Scale