

Window frames to be visually concealed behind Anodised Aluminium cladding.

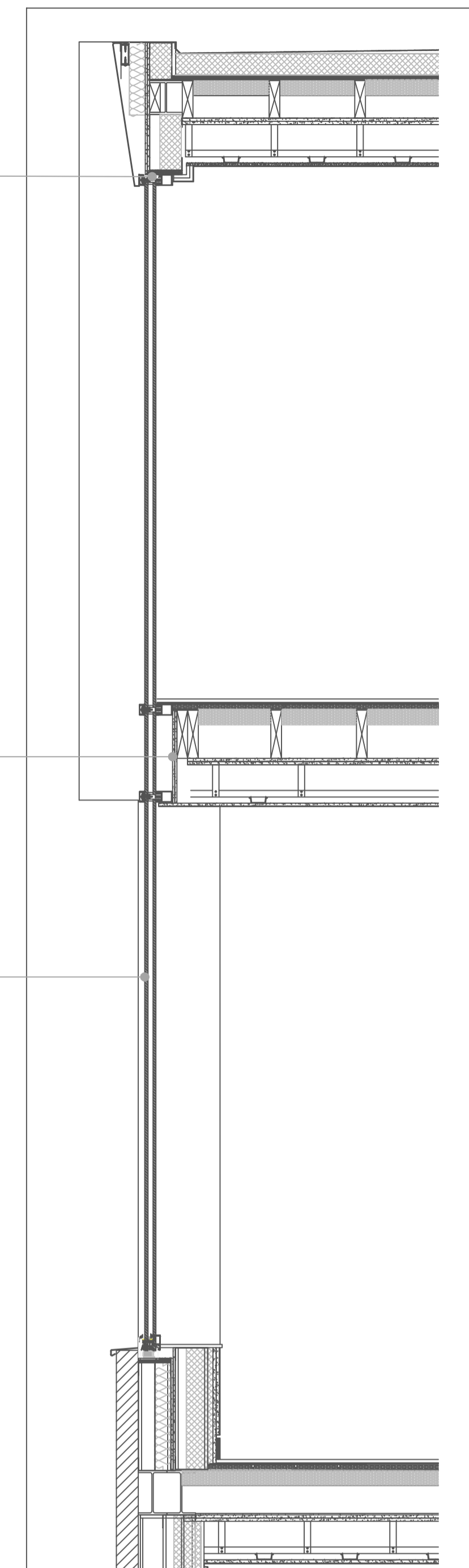
Fourth and Fifth story extensions to use Natural Anodised Aluminium cladding.

Anodised aluminium panel to be used within line of glazing to cover slab edge.

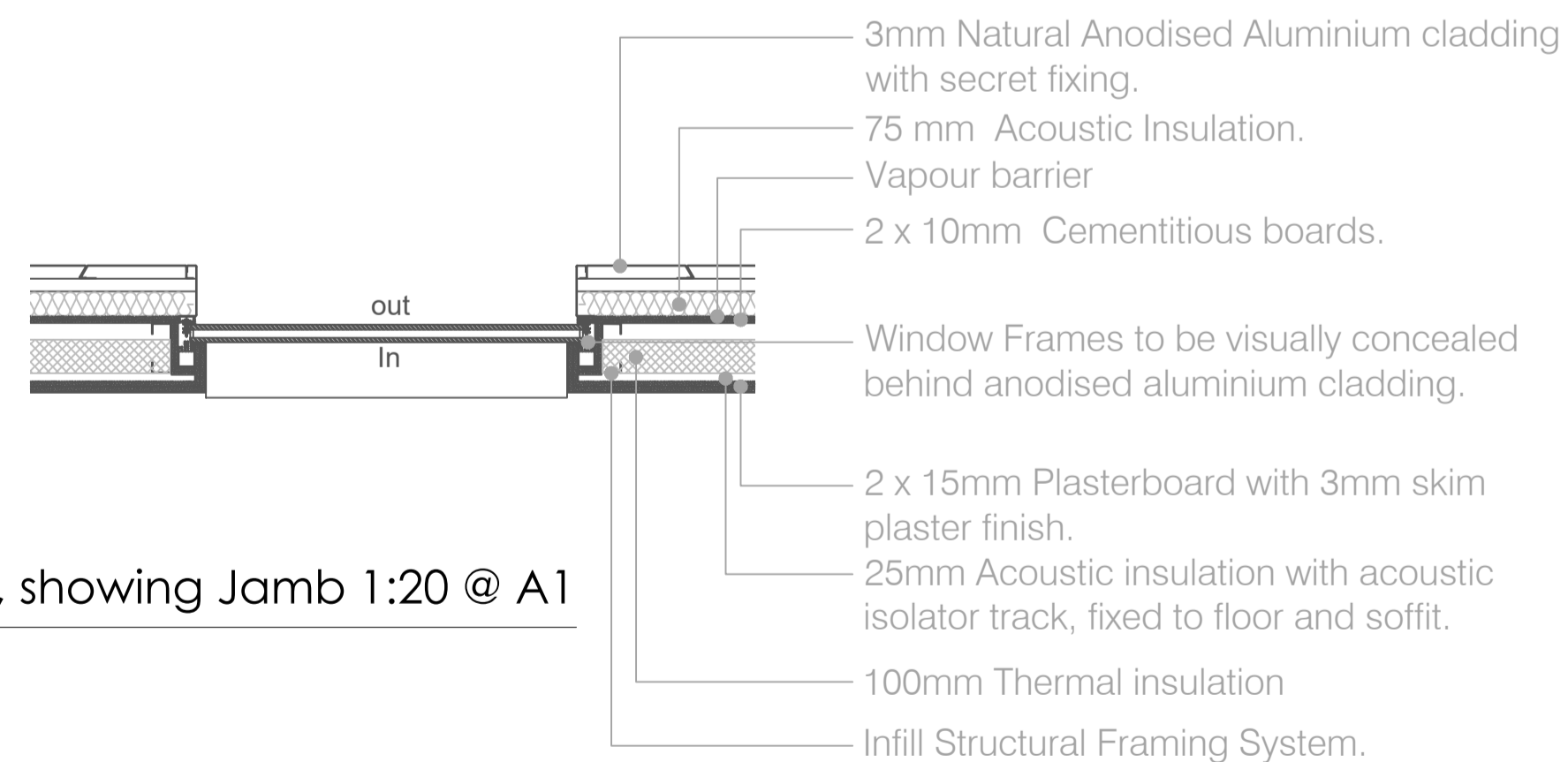
Line of concealed window frame behind.

Fixed shut window glazing to meet standards set out in acoustic engineers report, Glazing to provide  $R_{63Hz}$  31 dB and  $R_{125Hz}$  33 dB performance.

Typical Window Type 8 Elevation 1:20 @ A1



Typical Type 8 Window Section, showing Head and Sill 1:20 @ A1



Typical Window Type 8 Plan, showing Jamb 1:20 @ A1

3mm Natural Anodised Aluminium cladding with secret fixing.

75 mm Acoustic Insulation.

Vapour barrier

2 x 10mm Cementitious boards.

Window Frames to be visually concealed behind anodised aluminium cladding.

2 x 15mm Plasterboard with 3mm skim plaster finish.

25mm Acoustic insulation with acoustic isolator track, fixed to floor and soffit.

100mm Thermal insulation

Infill Structural Framing System.

NOTES

- Do not scale off these drawings. Dimensions govern.
- All dimensions are given in millimetres (mm) unless otherwise noted.
- All dimensions shall be verified on site before proceeding with the work contractor before construction and fabrication commences.
- Workmanship and materials to be accordance with the relevant current British Standard Codes of Practice and the Local Authorities requirements.
- During construction the contractor shall be responsible for maintaining the structure in a stable condition.
- These drawings are to be read in conjunction with all other contract documentation and other consultants documentation.
- If in doubt, ask!

| Rev   | Date       | Reason for Issue    | ch'd |
|-------|------------|---------------------|------|
| PL-02 | 18-04-2018 | Planning Conditions | AK   |
| PL-01 | 05-03-2018 | Planning Conditions | JG   |
| PL-00 | 01-02-2018 | Planning Conditions | JG   |

**ambigram architects**

The studio, 5 Great James Street, Bloomsbury  
London WC1N 3DB

www.ambigramarchitects.com  
info@ambigramarchitects.com

© Copyright 2015

ambigram architects ltd

**Bayham Place**

48-56 Bayham Place  
London NW1 0EU

Project

**Condition 4 - Window Type 8**

Title

AA-A-1702

Job number

July 2017

Date

0807

Drawing no

JP

Drawn

PL-02

Revision

1:20 @A1

1:40 @A3

Scale