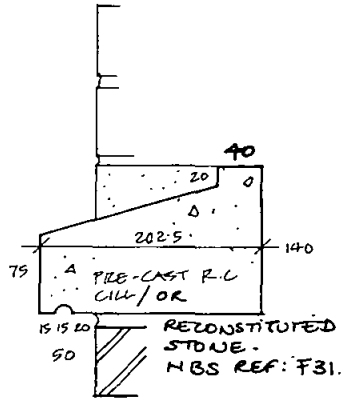
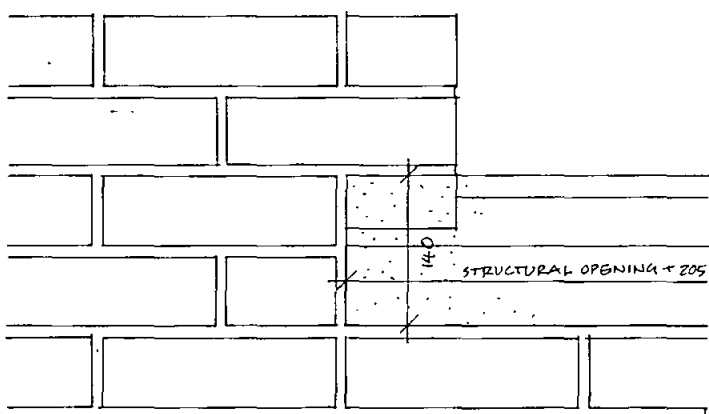
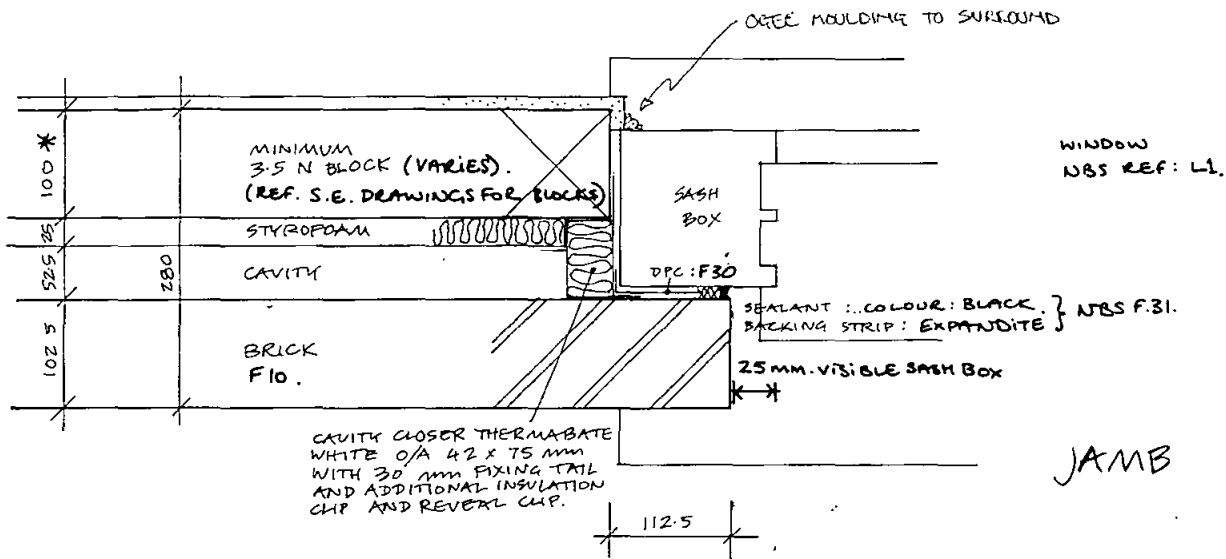


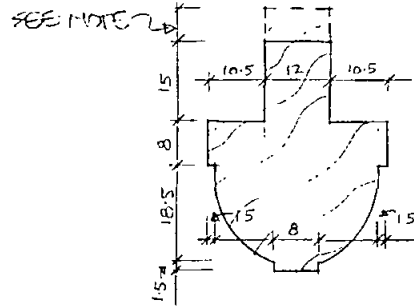
DATE 24-10-95

# 95 00996 R2

\* 150 MM INNER BLOCKWORK IN BLOCK CID.



PRE-CAST R.C. CILL



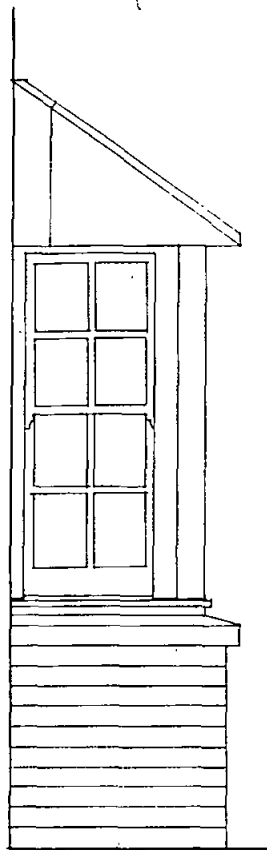
## NOTES

- DIMENSIONS SHOWN ARE INDICATIVE ONLY. SECTION OF GLAZING BAR TO REMAIN EXACTLY EXISTING SECTIONS IN LANDMARK BUILDING. CONTRACTOR TO OBTAIN DETAILS FOR ALL OTHER BLOCK MANUFACTURE.
- MORE WINDOWS IN LANDMARK BUILDING TO BE RETAINED ONLY.
- INDICATIVE SECTION SHOWN IS FOR SINGLE GLAZING ONLY. DOUBLE GLAZING IN BLOCKS C/D, G & H WILL REQUIRE DEEPER SPECIMEN PUTTY BAR AS SHOWN. CONTRACTOR TO COORDINATE SIZE OF BAR, TAILS, SASH BONE ETC, AS REQ & OBTAIN SAMPLE FOR APPROVAL BEFORE MANUFACTURE.
- REFER TO SPEC. LI, LAO FOR DETAILS OF TIMBER, GLAZING FIXING ETC.

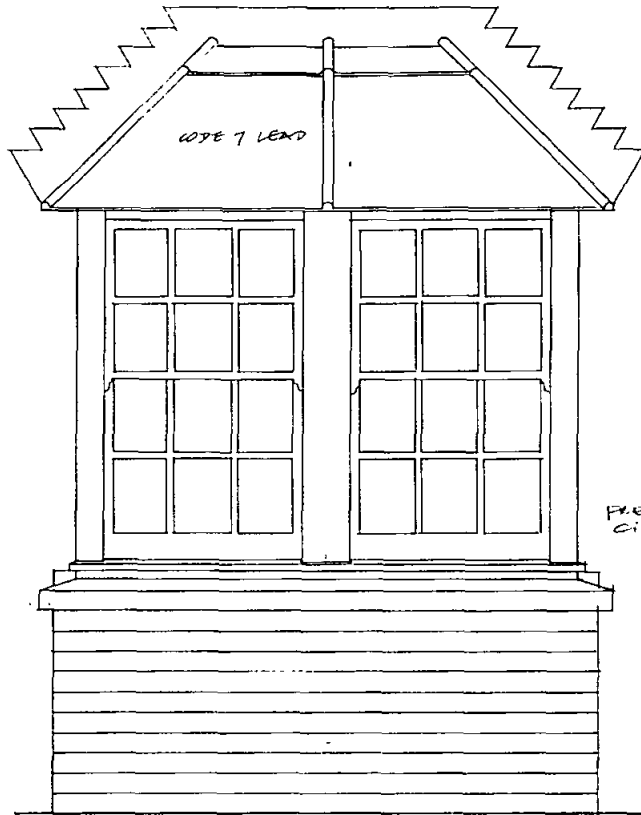
## TYPICAL GLAZING BAR

REVC 25-9-95 GLAZING BAR ADDED  
 REV B 30-5-95 NBS REFS ADDED.  
 REV A 14-10-94 CAVITY CLOSER ADDED

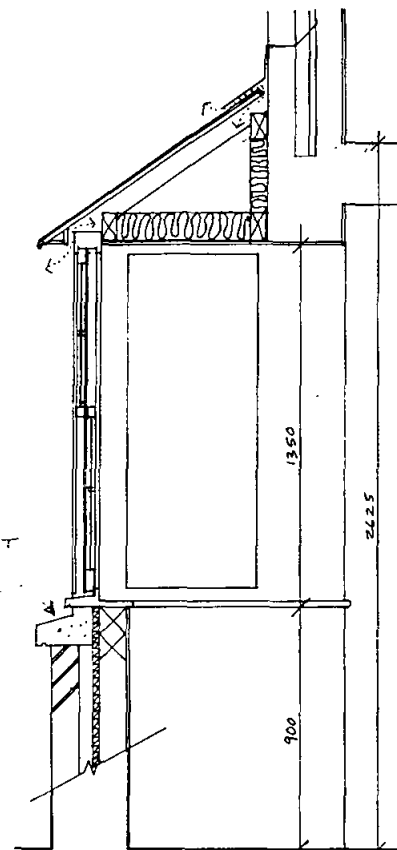
TYPICAL JAMB	Job reference <b>NEH</b>	Code <b>F</b>	Checked <b>NAU</b>	Drawing number Revision suffix <b>AA (2) 701 C</b>
NEW BUILD/BLOCKS CID	Scale/Sectioning <b>1:5</b>	Date <b>1 10 94</b>	Drawn <b>SM</b>	<b>Hunt Thompson Associates</b> 79 Parkway London E14 7DD 071-495 8555



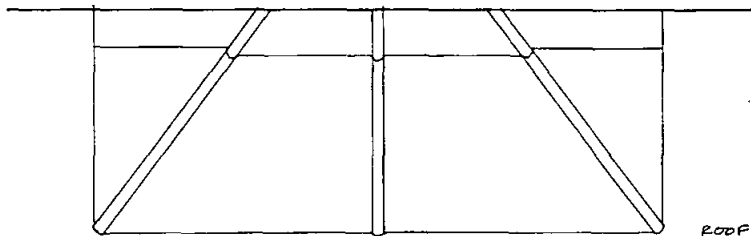
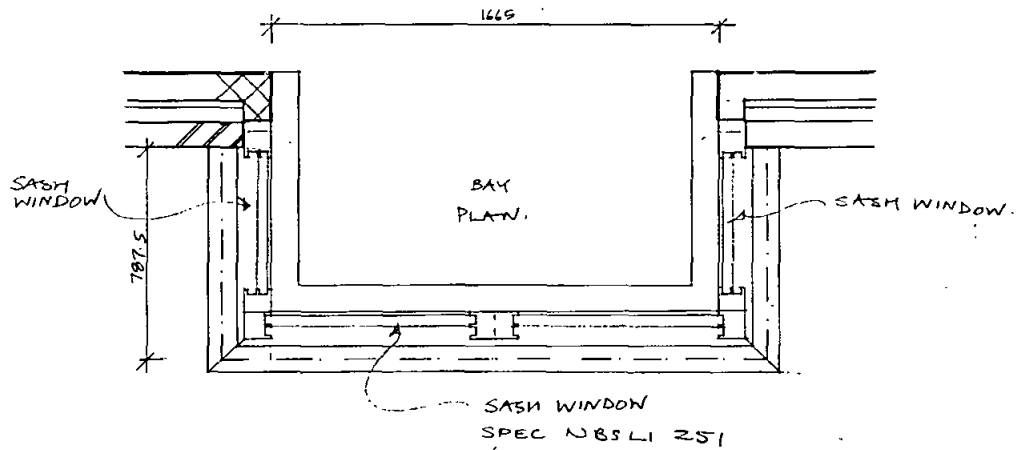
SIDE ELEVATION



FRONT ELEVATION



CROSS SECTION.



95 00996 R2

CH  
PE  
DA... 24-10-95

E:2010-05-MIG SASH WINDOW ANNOTATED  
A 15 12 94 SM LEAD UPGRADED TO CODE 7

PRELIMINARY

JOB REFERENCE  
NEA

Code  
F

Checked  
NDR

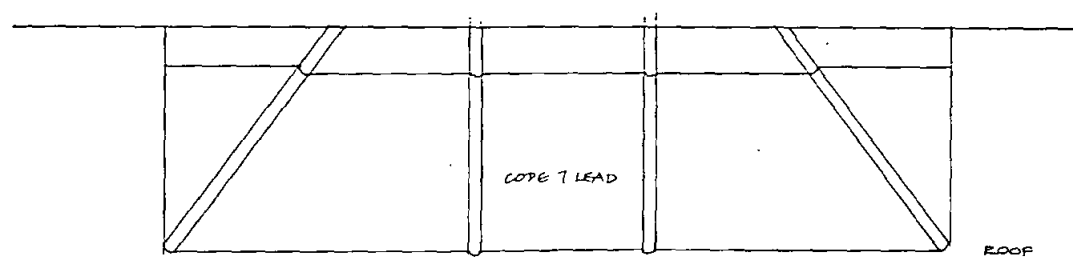
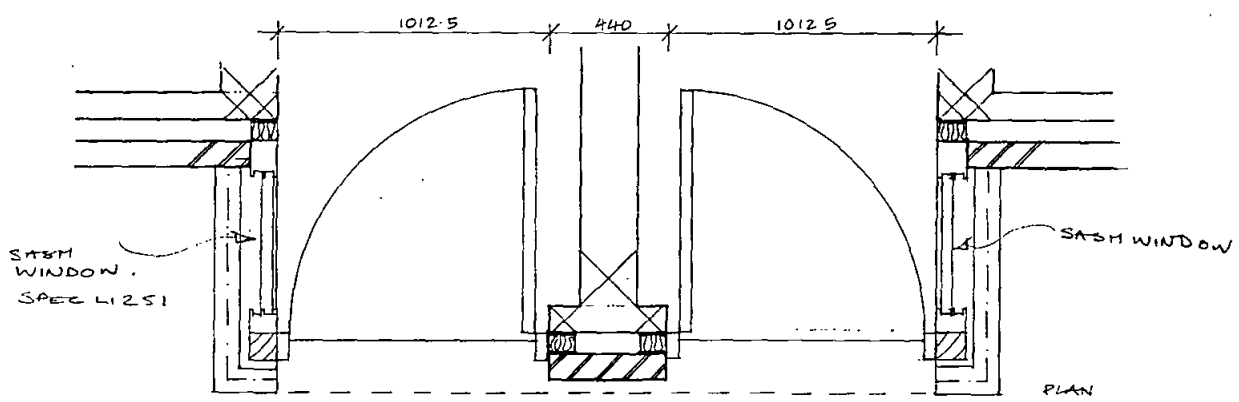
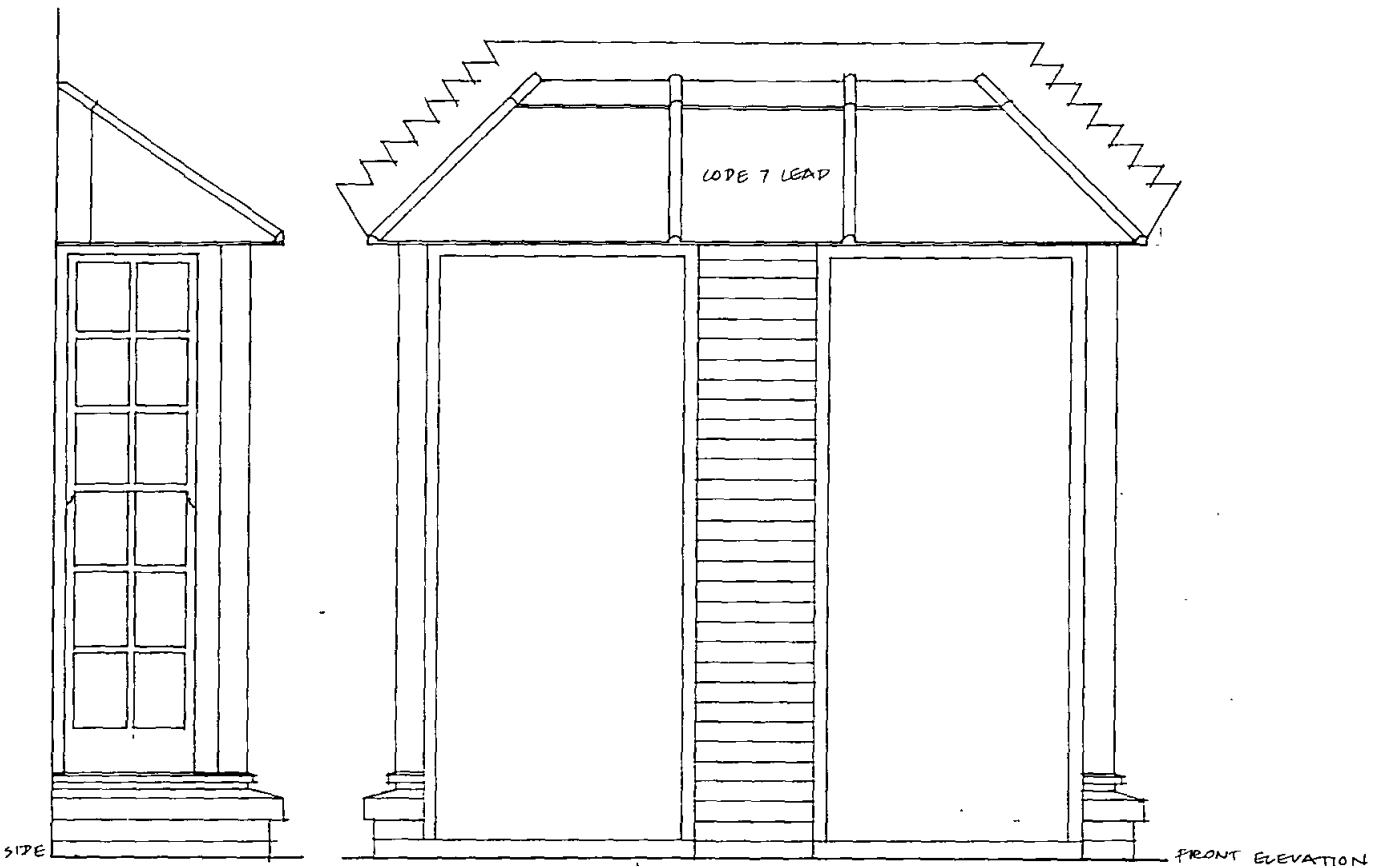
Drawing number Revision suffix  
AA (2) 705 B

BAY BLOCK 9

Scale/Direction joint  
1:20

Date  
29/9/94  
Drawn  
SM

Hunt Thompson Associates  
79 Parkway London NW1 7PP 071-485 8555



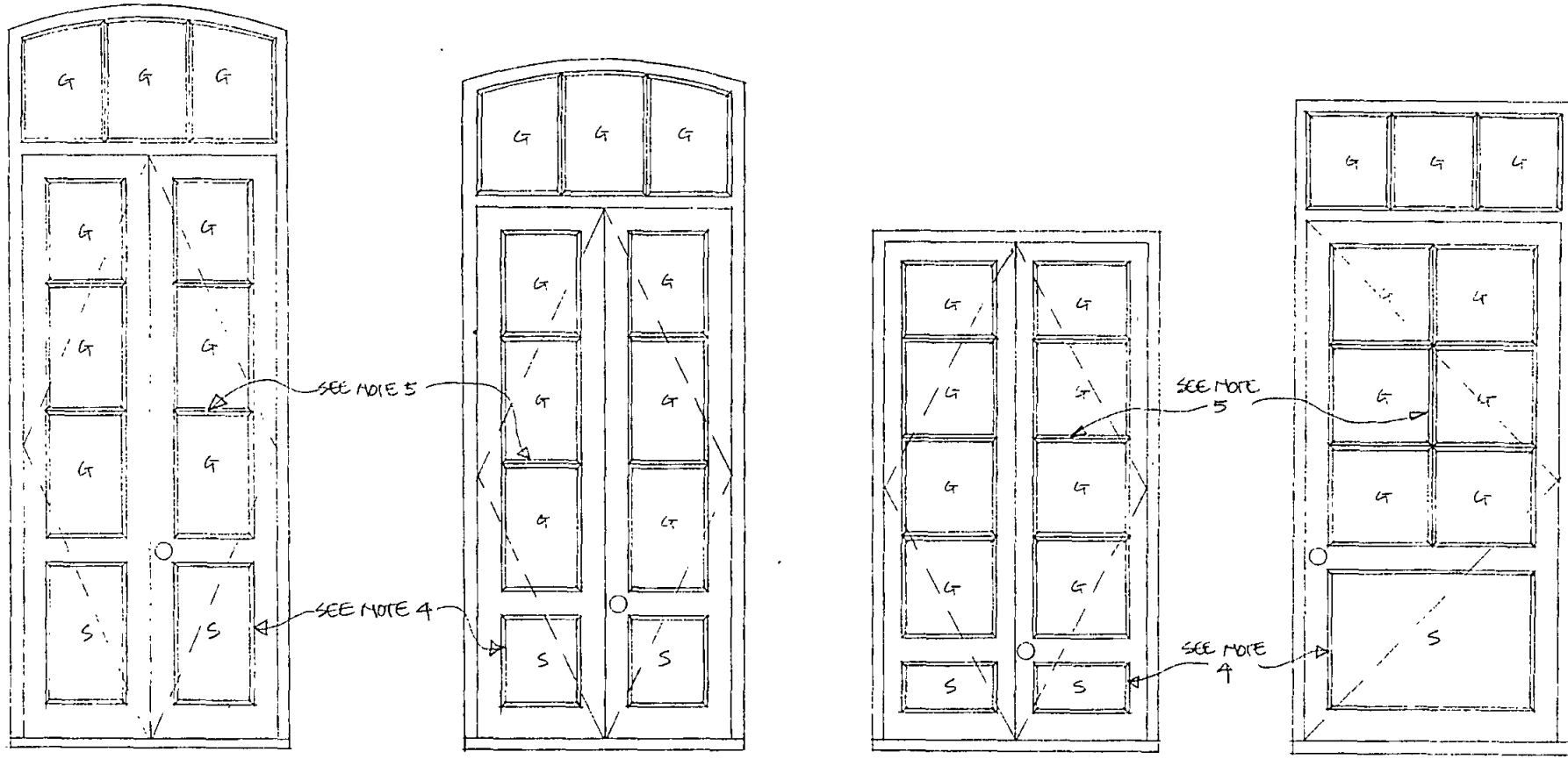
95 00996 R2

CHIEF ENGINEER  
 PLAN ROOM  
 DATE 24-10-95

A-20-10 95 SASH WINDOW ANNOTATED.

ENTRY BAY BLOCK G	Job reference NEH	Floor F	Drawing number Revision with AA (2) 708 A
	Scale/Setting out 1:20	Date 6/12/94	Drawn SM
			Hunt Thompson Associates 70 Park Lane London NW1 7PP 071-485 8555

CHIEF ARCHITECT DEPT.  
 PLAN RECEIVED  
 DATE 24-10-95



19500996R2

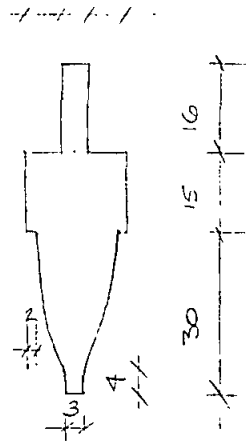
NOTES

1. REFER TO SPEC L1 & L40 FOR DETAILS OF TIMBER GLAZING, FIXING ETC. SINGLE GLAZED, PUTTIED, PAINTED.
2. REFER TO DRGS AL(2)215 & 216 FOR KEY LOCATION OF DOORS
3. ALL PANEL RAILS TO LIME THROUGH WITH ADJACENT WINDOW SILL. REF DRGS AL(2)215 & 216
4. ALL SOLID PANEL MOULDINGS TO EXACTLY MATCH MOULDINGS ON HOUSE 6 FRONT DOOR (SEE AA(2)714) INSIDE + OUTSIDE.
5. ALL GLAZING BARS TO EXACTLY MATCH EXISTING WINDOW GLAZING BARS IN BLOCK B (SEE AA(2)714 BAR 1) " "
6. ALL JOINERY TO SITE DIMENSIONS - FOLLOWING PROPORTIONAL LAYOUTS SHOWN ABOVE
7. SAMPLE TO BE SUBMITTED FOR APPROVAL PRIOR TO MANUFACTURE
8. REFER TO PLAN FOR HANDING OF DOOR SWINGS

77 GOWER STREET LONDON WC1E 6BP	<b>JT</b>
TEL 0171 831 8118 FAX 0171 831 8118	
NEW END HOSPITAL	JOHN THOMPSON & PARTNERS
	MEH
BLOCK B	1:20 25-9-95
NEW REAR DOORS	AA(2)713 A

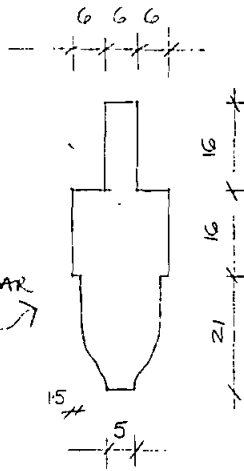
9500996R2

757

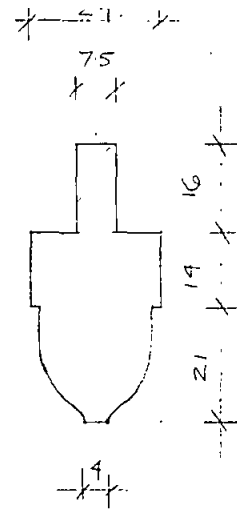


1. BLOCK B  
GLAZING BAR 1:1

2. BLOCK E/F  
GLAZING BAR  
1:1.



3. BLOCK A.  
GLAZING BAR 1:1



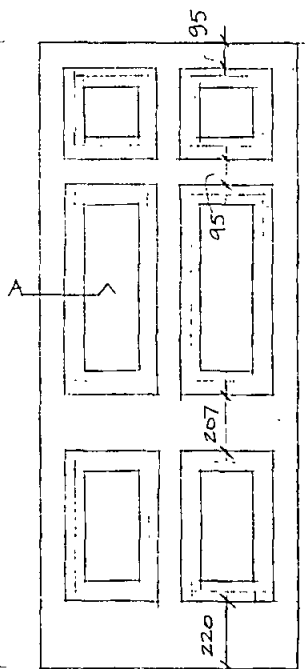
ARCHITRAVE  
(ALL ROUND  
OPENING)

FRAME  
TO SUIT  
OPENING.

FANLIGHT  
FRAME

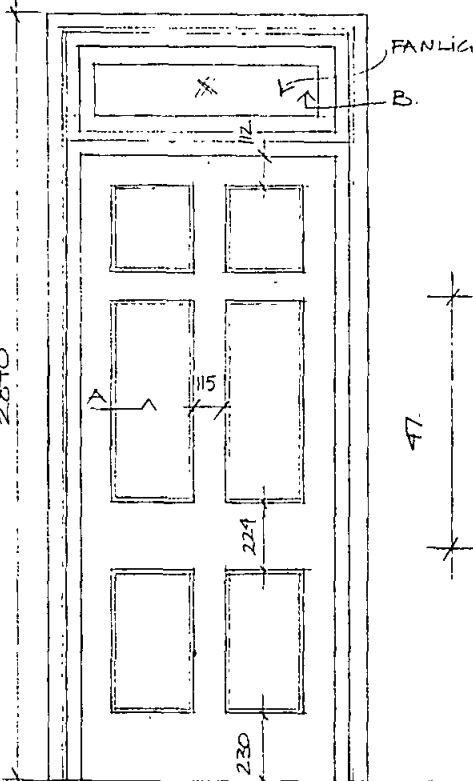
GLASS

ARCHITRAVES AND  
HEAD OF FANLIGHT.

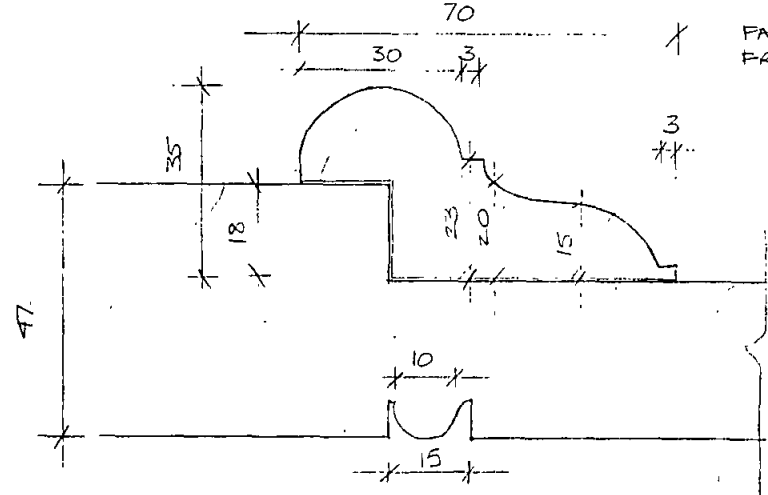


FRONT SIDE

HOUSE 6 FRONT DOOR 1:20.



REAR SIDE



MOULDING HOUSE 6 DOOR.  
A/A.

77 COWROSS STREET  
LONDON EC1M 6BP  
Telephone  
0171 251 9136  
Fax  
0171 251 9136



NEWEND HOSPITAL

JOHN THOMPSON & PARTNERS

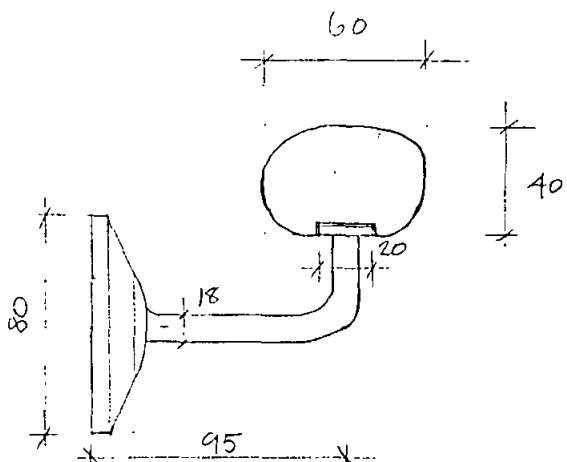
for NEM

GLAZING PROFILES  
+ DOOR MOULDING

1:1 1:20 5.10.95  
AAC2714

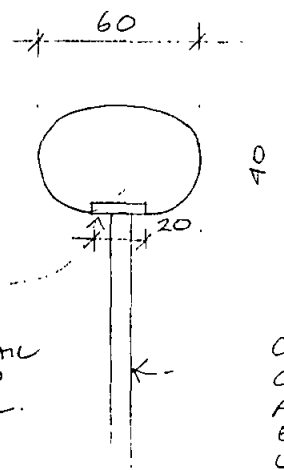
CHIEF ENGINEERS DEPT.  
DRAWING RECEIVED  
24.10.95

CP  
 PLAN  
 DATE 24-10-95



BRACKET INSET INTO HARDWOOD RAIL.

HARDWOOD RAIL.  
 CAST IRON ROSE  
 OCTAGONAL.



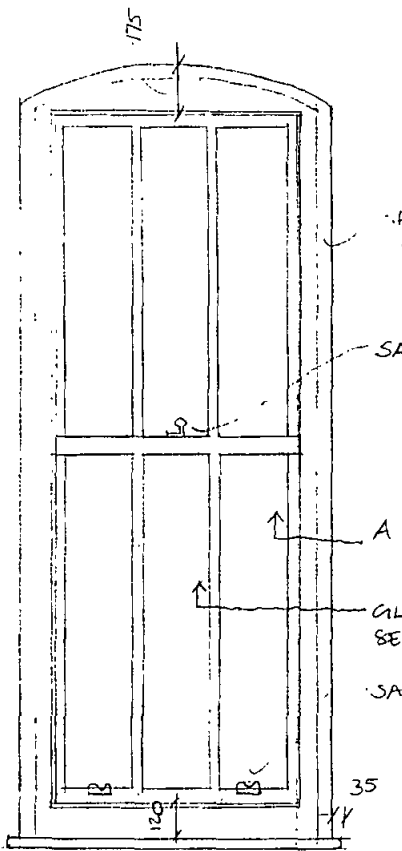
CI TOP RAIL  
 INSET INTO  
 HANDRAIL.

HANDRAIL TO  
 BALUSTRADE TO  
 MATCH EXISTING  
 HOUSE 1 1:2.

CAST IRON BALUSTER  
 CAST FROM ORIGINAL  
 AND ADAPTED FOR  
 EACH STEP AND FIXING  
 LOCATION

ALL TO BE MEASURED AND  
 DRAWN PRIOR TO  
 MANUFACTURE AND  
 APPROVED BY ENGLISH HERITAGE.  
 INCLUDING END FIXINGS AND  
 END PIECES - SCROLLED TO  
 SUIT STEPS.

EXISTING (TO BE REPAIRED)  
 HANDRAIL IN BLOCK B  
 HOUSE 1. 1:2



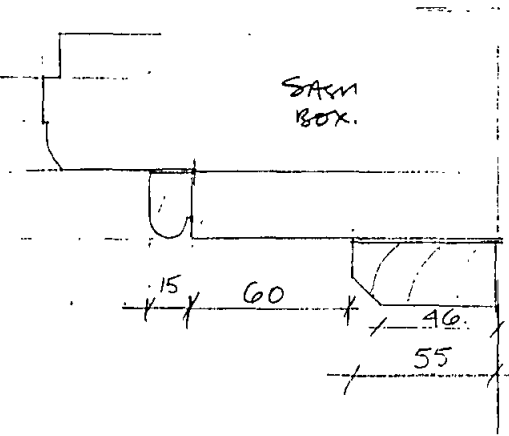
ARCHITRAVE/ BEAD.

SASH CATCH.

A

GLAZING BAR PROFILE  
SEE AA(2)714

SASH LIFTS



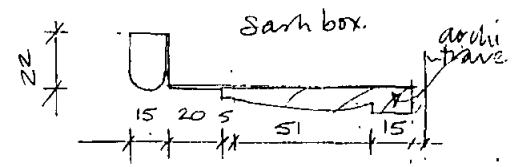
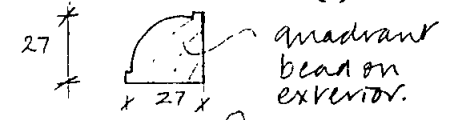
53 frame.  
 25 staff bead  
 23 architrave

PART PLAN A  
 WINDOW FRAME  
 BLOCK E/F.  
 1:2.

95 00996 R2

BLOCK A WINDOWS.

TO BE REPAIRED OR REMADE  
 TO MATCH EXISTING, WHERE  
 WINDOWS MISSING.  
 GLAZING BAR SEE AA(2)714.



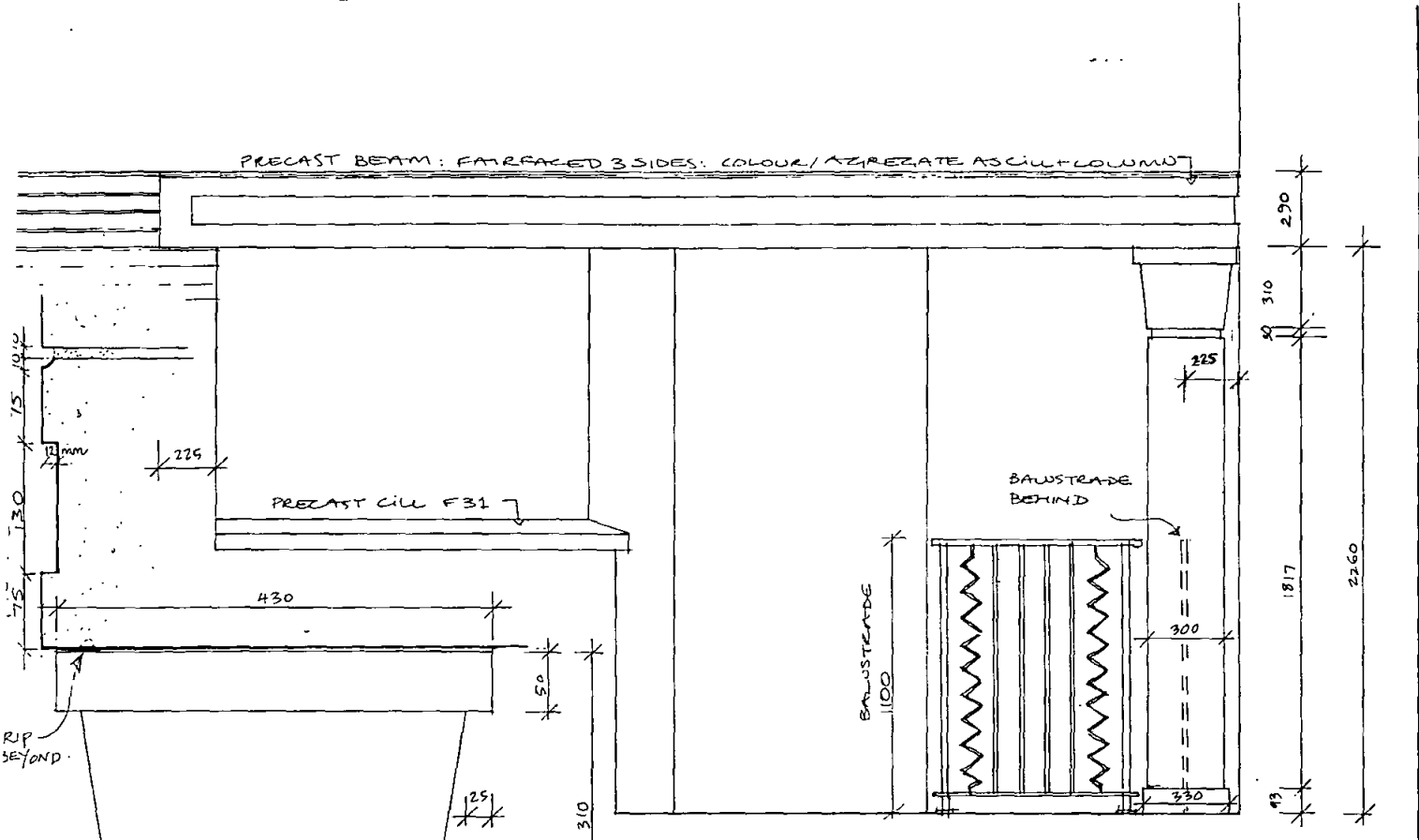
WINDOW E/F 1:20.

77 GOWER STREET  
 LONDON EC1A 3BB  
 JOHN THOMPSON & PARTNERS  
 ARCHITECTS  
 FOR THE CLIENT

**JT**

NEW END HOSPITAL JOHN THOMPSON & PARTNERS  
 FOR THE NEM

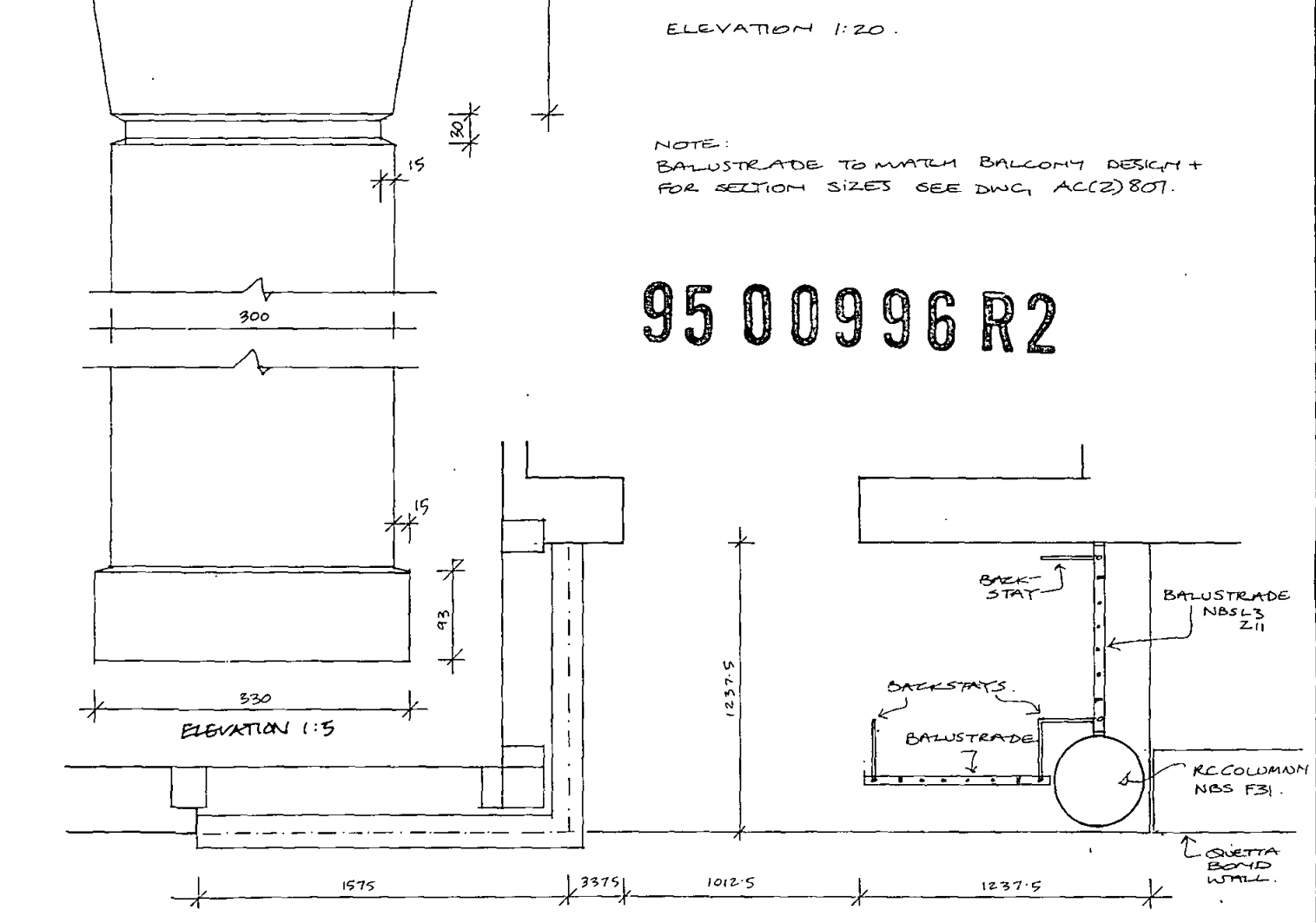
BLOCK B HANDRAIL 1:20 1:2 61095  
 BLOCK E/F WINDOW AA(2)715



ELEVATION 1:20.

NOTE:  
BALUSTRADE TO MATCH BALCONY DESIGN +  
FOR SECTION SIZES SEE DWG. AC(2)807.

95 00996 R2



PROFILE AND DRIP  
ADDED FOR PLANNING  
APPLICATION.  
A 30. MAY 1995. NDCQ, NBS + NOTES  
ADDED + BALUSTRADES

COLUMN + BEAM TO BLOCK H NEWEND HOSPITAL.	Job reference NEH	Code F	Checked NDCQ	Drawing number Revision suffix AC (2) 812 B
	Scale/Setting out 1:20 1:5	Date 1 10 94	Drawn SM	<b>Hunt Thompson Associates</b> 79 Parkway, London NW1 7PP 071-485 8555