



EWS-503 New clay facing brickwork

- GENERAL NOTES**
1. Dimensions are in millimetres unless stated otherwise.
 2. Levels are in metres AOD unless stated otherwise.
 3. Dimensions govern. Do not scale off drawing.
 4. All dimensions to be verified on site before proceeding.
 5. All discrepancies to be notified in writing to Make Limited.
- © Make Limited 2014
- NOTES:**
1. All new and retained existing structure (walls, columns and downstands beams) to be confirmed by Structural Engineer.
 2. All plant areas and services risers (sizes locations, and routes) to be confirmed by Mechanical Engineer.
 3. Changes to the envelope from the consented planning scheme are to be reviewed and confirmed by Planning Consultant.
 4. Client to confirm Ground and Lower Ground retail strategy. Planning consent for LG/GF A1 retail limited to a maximum of 2,499sq.m. with A3 Use on Howland-Whitfield St corner.
 5. Refer to M&E consultant report for current M&E retail allowances.
 6. VRF's to perimeter of LG/GF are required if used as office.
 7. Access strategy to Ground and Lower Ground floors from street level is to be developed based on Use type and space planning.
 8. Part-M & DDA compliance (disabled toilets, ramps) to be reviewed by access consultant.
 9. Cleaning & maintenance to be reviewed (atrium, facade) by building maintenance consultant.
 10. Existing structure based on Arup original design drawings & PCA Survey (2010).
 11. New Structure based on engineers information
 12. Terraces, landscaping, park, roof plant, and residential layouts illustrative, refer to separate reports.
 13. Additional terraces and changes to atrium to be confirmed by planning authority
 14. Acoustic performance to be confirmed by acoustic consultant
- NOTE:** Any areas measured from these plans by a quantity surveyor, relate to the likely areas of the building at the current stage of the design. Any decisions to be made on the basis of these predictions, whether as to project viability, pre-letting, lease agreement or the like should include due allowance for the increases and decreases inherent in the design development and building processes.

Rev	Date	Reason For Issue	Chk
05	27.05.16	Revised Stage E 2016	
04	07.11.14	Tender Issue 2014	
03	27.10.14	Tender Issue 2014	
02	08.04.13	Tender Issue	
01	25.01.13	Stage E Issue	
00	21.08.12	Stage D Issue	

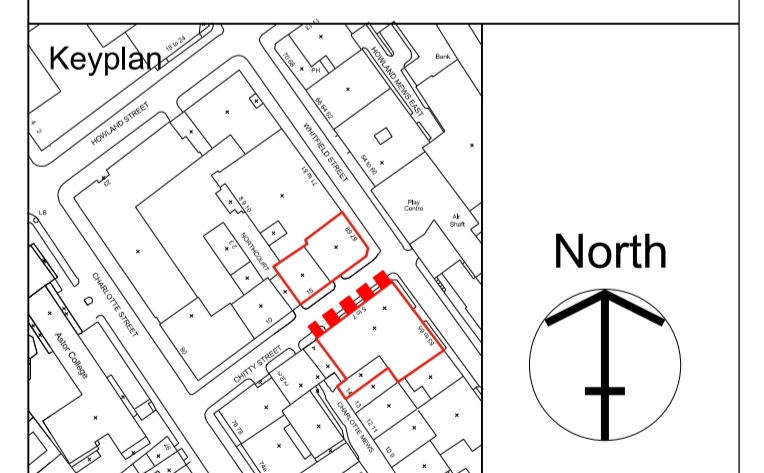
FOR TENDER

DRAWING STATUS

make

32 Cleveland Street,
London, W1T 4JY
tel +44 (0) 20 7636 5151
info@makearchitects.com
www.makearchitects.com

Client
Derwent London
West London and Suburban
Property Investments Ltd.
W1S 2ER



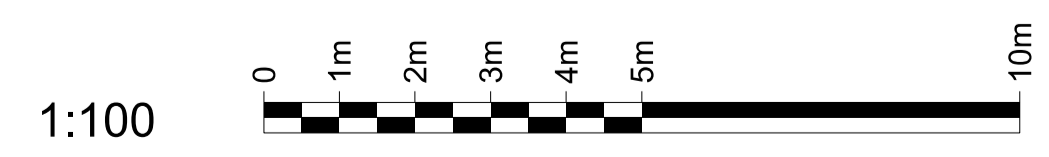
Project
65 Whitfield street
and 67-69 Whitfield street

Drawing Title
EWS Types
Chitty Street South
Elevation

Scale 1:100 Paper Size @A1 Date 21.08.12

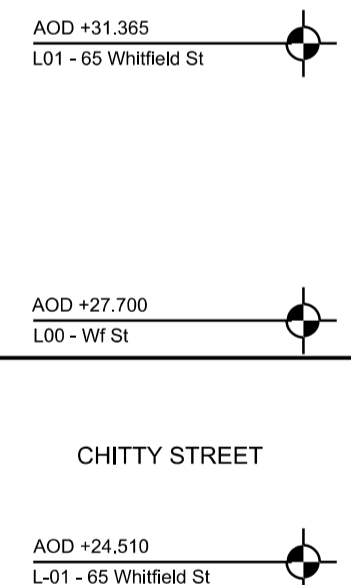
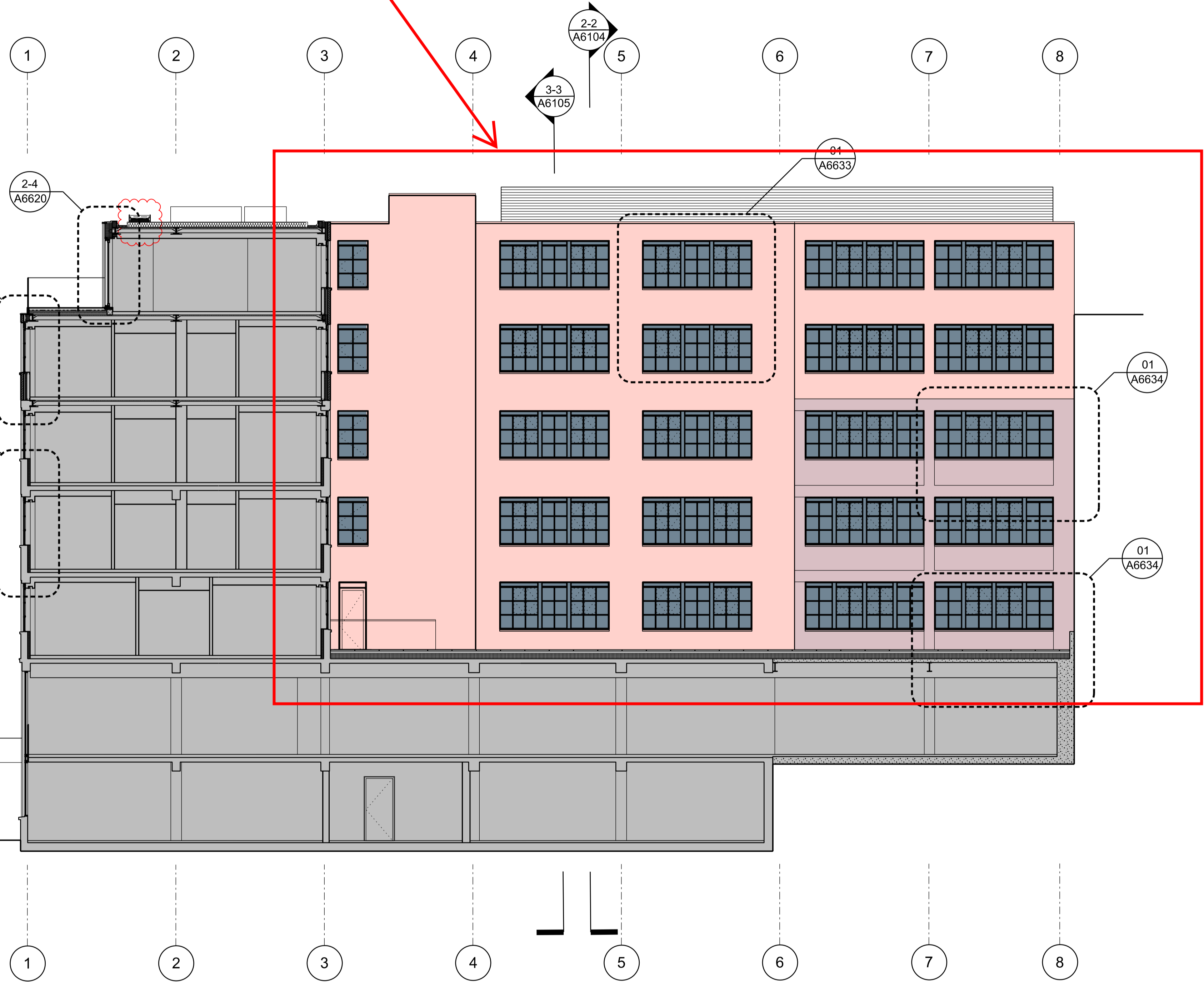
Project No. 0825 Draw No. A6501 Rev No. 05

- | | | | |
|--------------------------------|--------------------------|--------------------------|-----------------------|
| Retained facade systems | Brickwork systems | Aluminium systems | Window systems |
| EWS-501 | EWS-503 | EWS-504 | EWS-601 |
| EWS-502 | EWS-506 | EWS-602 | EWS-603 |
| EWS-505 | EWS-507 | | |





EWS-506 Michelmersh
blockleys metro smooth
buff brick



Retained facade systems	Brickwork systems	Aluminium systems	Window systems
EWS-501	EWS-503	EWS-504	EWS-601
EWS-502	EWS-506		EWS-602
EWS-505	EWS-507		EWS-603
			EWS-607



- GENERAL NOTES**
- Dimensions are in millimetres unless stated otherwise.
 - Levels are in metres AOD unless stated otherwise.
 - Dimensions govern. Do not scale off drawing.
 - All dimensions to be verified on site before proceeding.
 - All discrepancies to be notified in writing to Make Limited.
- © Make Limited 2014

- NOTES:**
- All new and retained existing structure (walls, columns and downstands beams) to be confirmed by Structural Engineer.
 - All plant areas and services risers (sizes locations, and routes) to be confirmed by Mechanical Engineer.
 - Changes to the envelope from the consented planning scheme are to be reviewed and confirmed by Planning Consultant.
 - Client to confirm Ground and Lower Ground retail strategy. Planning consent for LG/GF A1 retail limited to a maximum of 2,499sq.m. with A3 Use on Howland-Whitfield St corner.
 - Refer to M&E consultant report for current M&E retail allowances.
 - VRF's to perimeter of LG/GF are required if used as office.
 - Access strategy to Ground and Lower Ground floors from street level is to be developed based on Use type and space planning.
 - Part-M & DDA compliance (disabled toilets, ramps) to be reviewed by access consultant.
 - Cleaning & maintenance to be reviewed (atrium, facade) by building maintenance consultant.
 - Existing structure based on Arup original design drawings & PCA Survey (2010).
 - New Structure based on engineers information
 - Terraces, landscaping, park, roof plant, and residential layouts illustrative, refer to separate reports.
 - Additional terraces and changes to atrium to be confirmed by planning authority
 - Acoustic performance to be confirmed by acoustic consultant

NOTE: Any areas measured from these plans by a quantity surveyor, relate to the likely areas of the building at the current stage of the design. Any decisions to be made on the basis of these predictions, whether as to project viability, pre-letting, lease agreement or the like should include due allowance for the increases and decreases inherent in the design development and building processes.

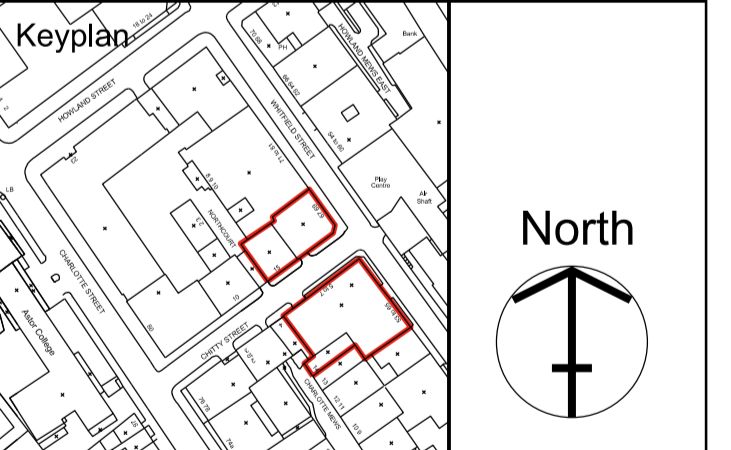
Rev	Date	Reason For Issue	Chk
06	26.02.16	Stage E 2016	KK
05	07.11.14	Tender Issue 2014	
04	27.10.14	Tender Issue 2014	
03	16.04.13	Tender Issue	
02	08.04.13	Tender Issue	
01	25.01.13	Stage E Issue	
00	21.08.12	Stage D Issue	

FOR TENDER

DRAWING STATUS

make
32 Cleveland Street,
London, W1T 4JY
tel +44 (0) 20 7636 5151
info@makearchitects.com
www.makearchitects.com

Client
Derwent London
West London and Suburban
Property Investments Ltd.
W1S 2ER



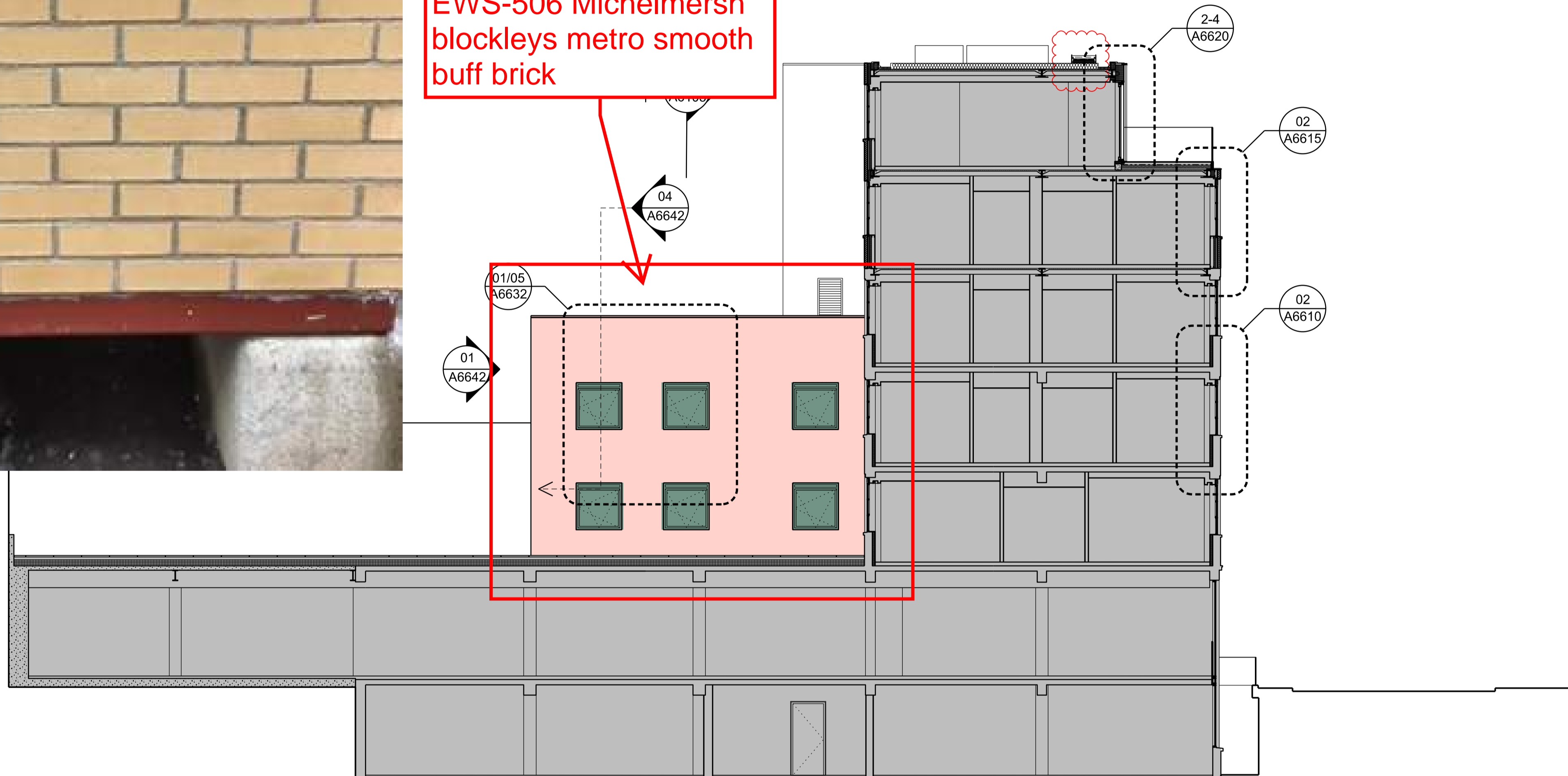
Project
65 Whitfield street
and 67-69 Whitfield street

Drawing Title
EWS Types
Whitfield Street Courtyard
Elevation

Scale	Paper Size	Date
1:100	@A1	21.08.12
Project No.	Draw No.	Rev No.
0825	A6505	06



EWS-506 Michelmersh blockleys metro smooth buff brick



- GENERAL NOTES**
1. Dimensions are in millimetres unless stated otherwise.
 2. Levels are in metres AOD unless stated otherwise.
 3. Dimensions govern. Do not scale off drawing.
 4. All dimensions to be verified on site before proceeding.
 5. All discrepancies to be notified in writing to Make Limited.
- © Make Limited 2014
- NOTES:**
1. All new and retained existing structure (walls, columns and downstands beams) to be confirmed by Structural Engineer.
 2. All plant areas and services risers (sizes locations, and routes) to be confirmed by Mechanical Engineer.
 3. Changes to the envelope from the consented planning scheme are to be reviewed and confirmed by Planning Consultant.
 4. Client to confirm Ground and Lower Ground retail strategy. Planning consent for LG/GF A1 retail limited to a maximum of 2,499sq.m. with A3 Use on Howland-Whitfield St corner.
 5. Refer to M&E consultant report for current M&E retail allowances.
 6. VRF's to perimeter of LG/GF are required if used as office.
 7. Access strategy to Ground and Lower Ground floors from street level is to be developed based on Use type and space planning.
 8. Part-M & DDA compliance (disabled toilets, ramps) to be reviewed by access consultant.
 9. Cleaning & maintenance to be reviewed (atrium, facade) by building maintenance consultant.
 10. Existing structure based on Arup original design drawings & PCA Survey (2010).
 11. New Structure based on engineers information
 12. Terraces, landscaping, park, roof plant, and residential layouts illustrative, refer to separate reports.
 13. Additional terraces and changes to atrium to be confirmed by planning authority
 14. Acoustic performance to be confirmed by acoustic consultant
- NOTE:** Any areas measured from these plans by a quantity surveyor, relate to the likely areas of the building at the current stage of the design. Any decisions to be made on the basis of these predictions, whether as to project viability, pre-letting, lease agreement or the like should include due allowance for the increases and decreases inherent in the design development and building processes.

Rev	Date	Reason For Issue	Chk
05	26.02.16	Stage E 2016	KK
04	07.11.14	Tender Issue 2014	
03	27.10.14	Tender Issue 2014	
02	08.04.13	Tender Issue	
01	25.01.13	Stage E Issue	
00	21.08.12	Stage D Issue	

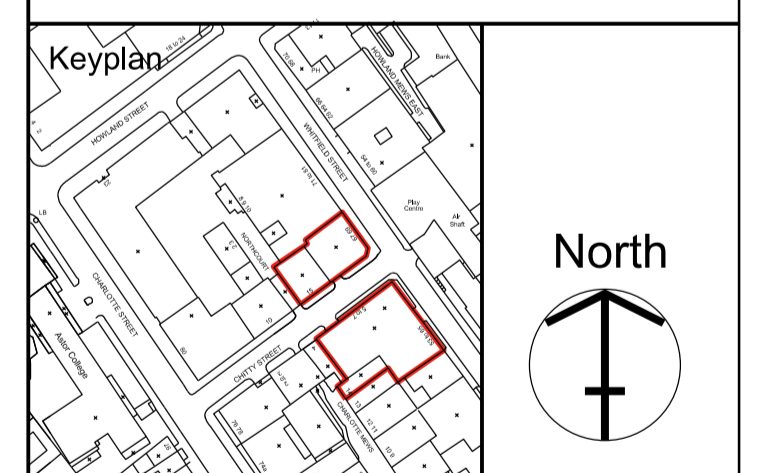
FOR TENDER

DRAWING STATUS

make

32 Cleveland Street,
London, W1T 4JY
tel +44 (0) 20 7636 5151
info@makearchitects.com
www.makearchitects.com

Client
Derwent London
West London and Suburban
Property Investments Ltd.
W1S 2ER



Project
65 Whitfield street
and 67-69 Whitfield street

Drawing Title
EWS Types
Charlotte Street Courtyard
Elevation

Scale 1:100 Paper Size @A1 Date 21.08.12

Project No. 0825 Draw No. A6503 Rev No. 05

Retained facade systems	Brickwork systems	Aluminium systems	Window systems
EWS-501	EWS-503	EWS-504	EWS-601
EWS-502	EWS-506		EWS-607
EWS-505	EWS-507		EWS-602
			EWS-603





EWS-503 New clay facing brickwork

- GENERAL NOTES**
- Dimensions are in millimetres unless stated otherwise.
 - Levels are in metres AOD unless stated otherwise.
 - Dimensions govern. Do not scale off drawing.
 - All dimensions to be verified on site before proceeding.
 - All discrepancies to be notified in writing to Make Limited.
- © Make Limited 2014
- NOTES:**
- All new and retained existing structure (walls, columns and downstands beams) to be confirmed by Structural Engineer.
 - All plant areas and services risers (sizes locations, and routes) to be confirmed by Mechanical Engineer.
 - Changes to the envelope from the consented planning scheme are to be reviewed and confirmed by Planning Consultant.
 - Client to confirm Ground and Lower Ground retail strategy. Planning consent for LG/GF A1 retail limited to a maximum of 2,499sq.m. with A3 Use on Howland-Whitfield St corner.
 - Refer to M&E consultant report for current M&E retail allowances.
 - VRF's to perimeter of LG/GF are required if used as office.
 - Access strategy to Ground and Lower Ground floors from street level is to be developed based on Use type and space planning.
 - Part-M & DDA compliance (disabled toilets, ramps) to be reviewed by access consultant.
 - Cleaning & maintenance to be reviewed (atrium, facade) by building maintenance consultant.
 - Existing structure based on Arup original design drawings & PCA Survey (2010).
 - New Structure based on engineers information.
 - Terraces, landscaping, park, roof plant, and residential layouts illustrative, refer to separate reports.
 - Additional terraces and changes to atrium to be confirmed by planning authority.
 - Acoustic performance to be confirmed by acoustic consultant.
- NOTE:** Any areas measured from these plans by a quantity surveyor, relate to the likely areas of the building at the current stage of the design. Any decisions to be made on the basis of these predictions, whether as to project viability, pre-letting, lease agreement or the like should include due allowance for the increases and decreases inherent in the design development and building processes.

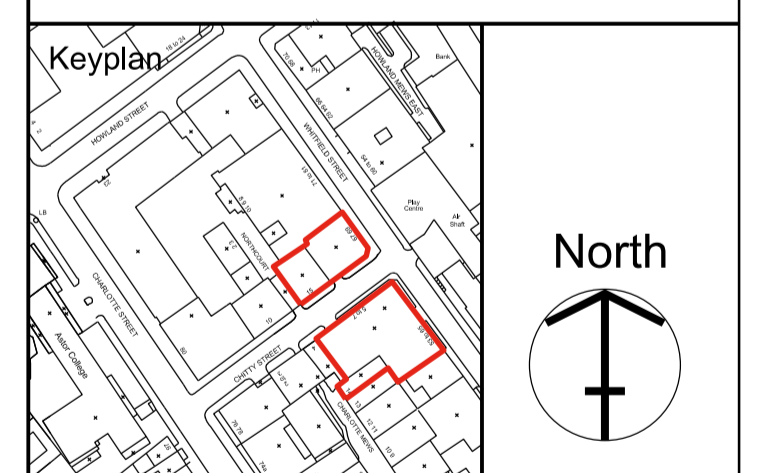
05	26.02.16	Stage E 2016	KK
04	07.11.14	Tender Issue 2014	
03	27.10.14	Tender Issue 2014	
02	08.04.13	Tender Issue	
01	25.01.13	Stage E Issue	
00	21.08.12	Stage D Issue	
Rev	Date	Reason For Issue	Chk

FOR TENDER

DRAWING STATUS

make
 32 Cleveland Street,
 London, W1T 4JY
 tel +44 (0) 20 7636 5151
 info@makearchitects.com
 www.makearchitects.com

Client
Derwent London
 West London and Suburban
 Property Investments Ltd.
 W1S 2ER



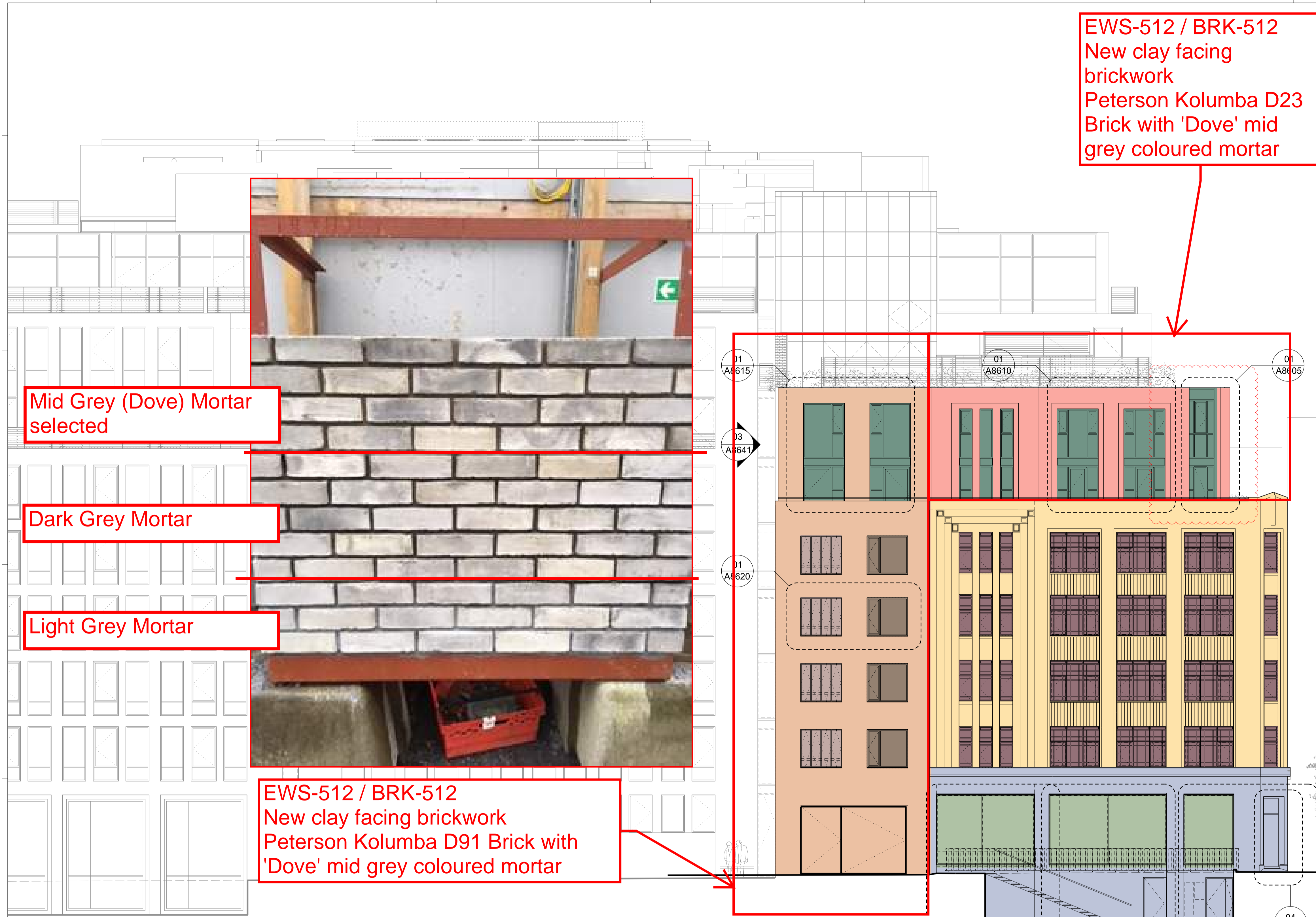
Project
65 Whitfield street
 and 67-69 Whitfield street

Drawing Title
EWS Types
 Whitfield Street Elevation

Scale	Paper Size	Date
1:100	@A1	21.08.12
Project No.	Draw No.	Rev No.
0825	A6500	05

Retained facade systems	Brickwork systems	Aluminium systems	Window systems
EWS-501	EWS-503	EWS-504	EWS-601
EWS-502	EWS-506	EWS-602	EWS-607
EWS-505	EWS-507	EWS-603	





Mid Grey (Dove) Mortar selected

Dark Grey Mortar

Light Grey Mortar

EWS-512 / BRK-512
New clay facing brickwork
Peterson Kolumba D91 Brick with
'Dove' mid grey coloured mortar

EWS-512 / BRK-512
New clay facing
brickwork
Peterson Kolumba D23
Brick with 'Dove' mid
grey coloured mortar

Dark Grey Mortar

Mid Grey (Dove) Mortar selected

Light Grey Mortar

07	27.09.16	Revised Stage E 2106	
06	26.02.16	Stage E 2016	KK
05	20.02.15	Tender Addendum 2015	
04	07.11.14	Tender Issue 2014	
03	27.10.14	Tender Issue 2014	
02	08.04.13	Tender Issue	
01	25.01.13	Stage E Issue	
00	21.08.12	Stage D Issue	
Rev	Date	Reason For Issue	Chk

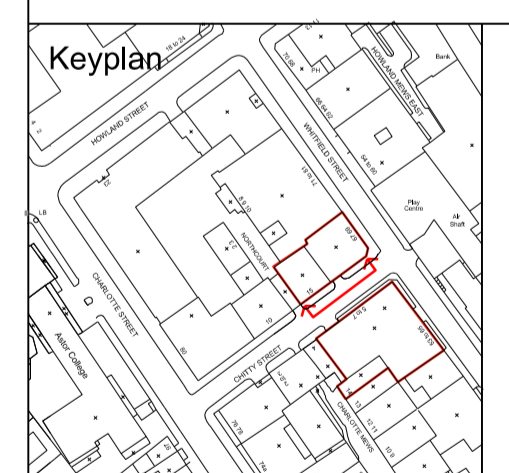
FOR TENDER

DRAWING STATUS

make

32 Cleveland Street,
London, W1T 4JY
tel +44 (0) 20 7636 5151
info@makearchitects.com
www.makearchitects.com

Client
Derwent London
West London and Suburban
Property Investments Ltd.
W1S 2ER



Project
65 Whitfield street
and 67-69 Whitfield street

Drawing Title
External wall System Types
Chitty Street Garden Elevation

Scale	Paper Size	Date
1:100	@A1	21.08.12
Project No.	Draw No.	Rev No.
0825	A8501	07

Retained facade systems	Brickwork systems	Window systems
EWS-511	EWS-512	EWS-611
EWS-514		EWS-614
		EWS-615
		EWS-613
		EWS-631



- GENERAL NOTES**
1. Dimensions are in millimetres unless stated otherwise.
 2. Levels are in metres AOD unless stated otherwise.
 3. Dimensions govern. Do not scale off drawing.
 4. All dimensions to be verified on site before proceeding.
 5. All discrepancies to be notified in writing to Make Limited.
- © Make Limited 2014
- NOTES:**
1. All new and retained existing structure (walls, columns and downstands beams) to be confirmed by Structural Engineer.
 2. All plant areas and services risers (sizes locations, and routes) to be confirmed by Mechanical Engineer.
 3. Changes to the envelope from the consented planning scheme are to be reviewed and confirmed by Planning Consultant.
 4. Client to confirm Ground and Lower Ground retail strategy. Planning consent for LG/GF A1 retail limited to a maximum of 2,499sq.m. with A3 Use on Howland-Whitfield St corner.
 5. Refer to M&E consultant report for current M&E retail allowances.
 6. VRF's to perimeter of LG/GF are required if used as office.
 7. Access strategy to Ground and Lower Ground floors from street level is to be developed based on Use type and space planning.
 8. Part-M & DDA compliance (disabled toilets, ramps) to be reviewed by access consultant.
 9. Cleaning & maintenance to be reviewed (atrium, facade) by building maintenance consultant.
 10. Existing structure based on Arup original design drawings & PCA Survey (2010).
 11. New Structure based on engineers information
 12. Terraces, landscaping, park, roof plant, and residential layouts illustrative, refer to separate reports.
 13. Additional terraces and changes to atrium to be confirmed by planning authority
 14. Acoustic performance to be confirmed by acoustic consultant
- NOTE:** Any areas measured from these plans by a quantity surveyor, relate to the likely areas of the building at the current stage of the design. Any decisions to be made on the basis of these predictions, whether as to project viability, pre-letting, lease agreement or the like should include due allowance for the increases and decreases inherent in the design development and building processes.

Rev	Date	Reason For Issue	Chk
06	26.02.16	Stage E 2016	KK
05	20.02.15	Tender Addendum 2015	
04	07.11.14	Tender Issue 2014	
03	27.10.14	Tender Issue 2014	
02	08.04.13	Tender Issue	
01	25.01.13	Stage E Issue	
00	21.08.12	Stage D Issue	

FOR TENDER

DRAWING STATUS

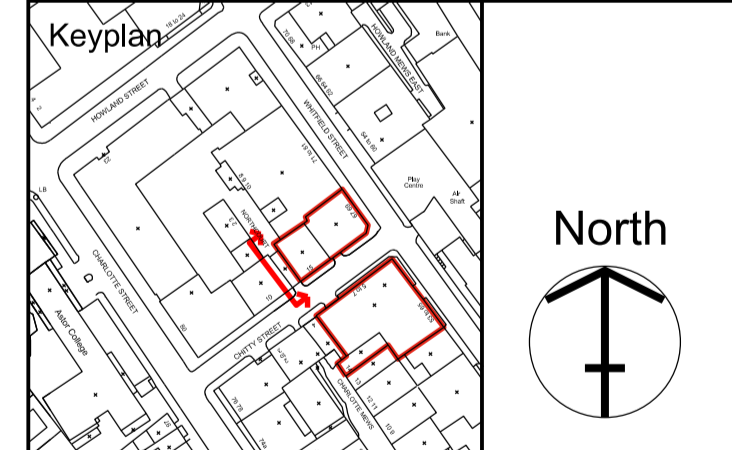
make

32 Cleveland Street,
London, W1T 4JY

tel +44 (0) 20 7636 5151

info@makearchitects.com
www.makearchitects.com

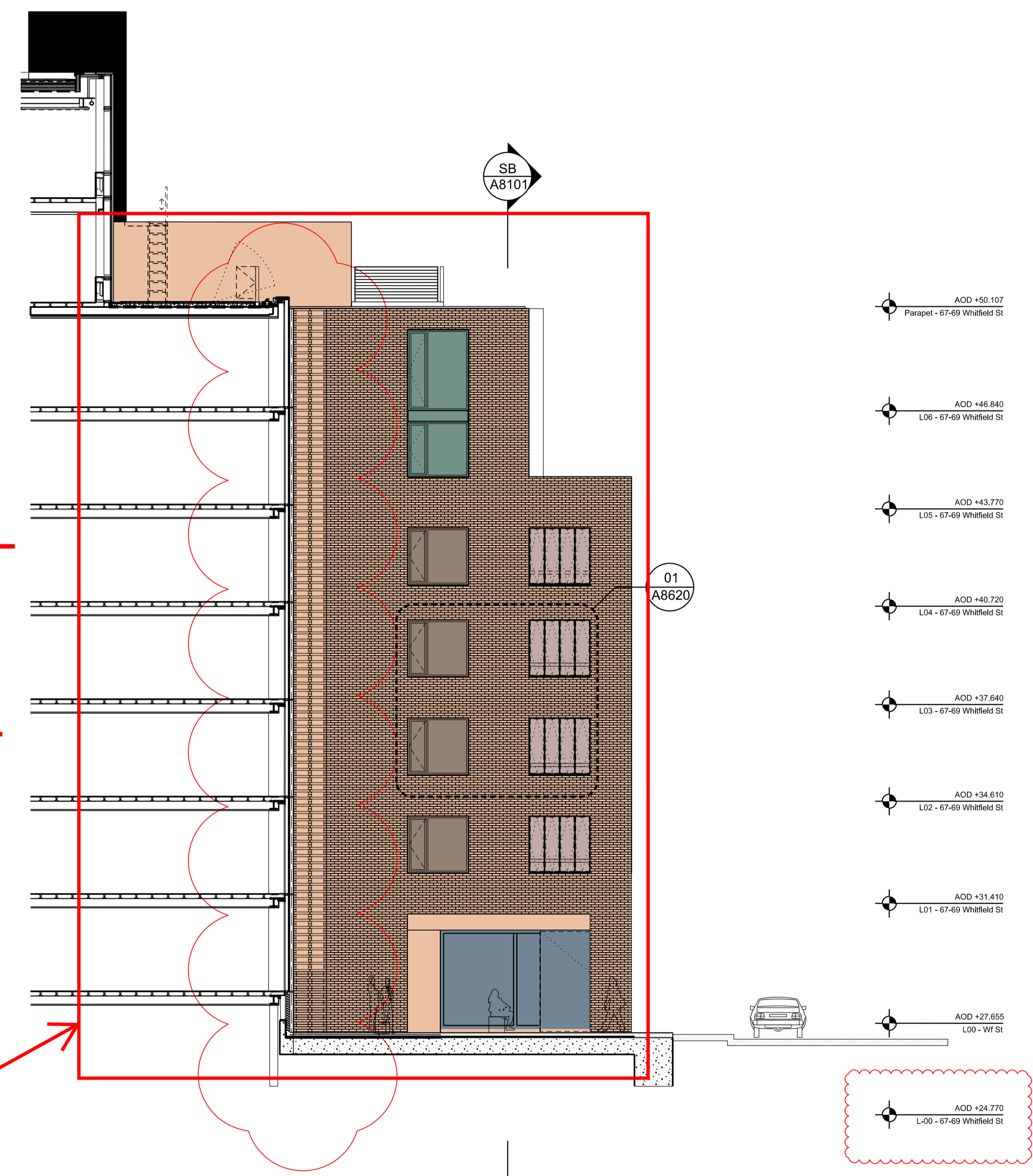
Client
Derwent London
West London and Suburban
Property Investments Ltd.
W1S 2ER



Project
65 Whitfield street
and 67-69 Whitfield street

Drawing Title
External wall System Types
Chitty Street Garden Elevation

Scale	Paper Size	Date
1:100	@A1	21.08.12
Project No.	Draw No.	Rev No.
0825	A8502	06



Mid Grey (Dove) Mortar selected

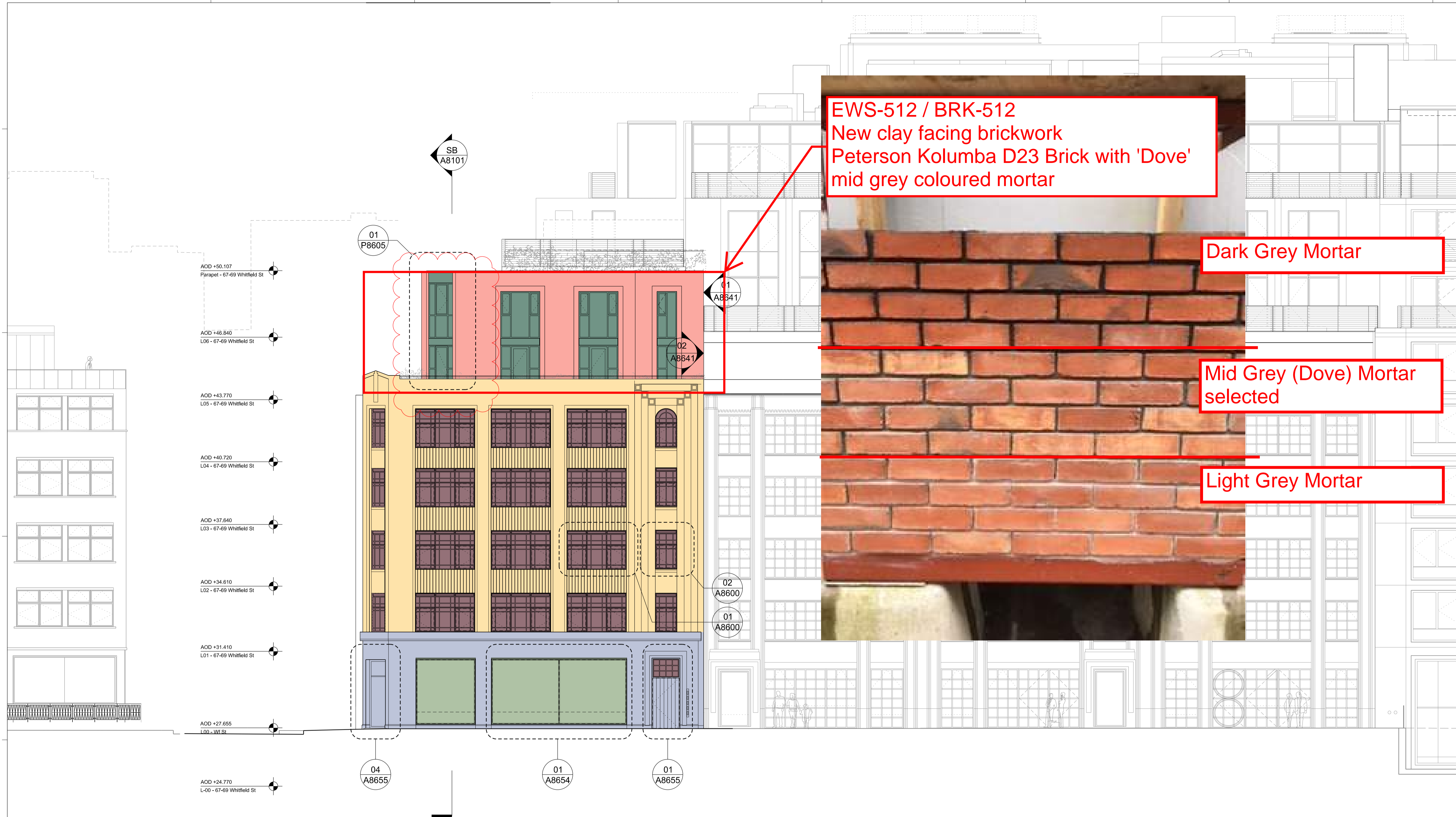
Dark Grey Mortar

Light Grey Mortar

EWS-512 / BRK-512
New clay facing brickwork
Peterson Kolumba D91 Brick with
'Dove' mid grey coloured mortar

Retained facade systems	Brickwork systems	Window systems
EWS-511	EWS-512	EWS-611
EWS-514	EWS-512	EWS-614
		EWS-615
		EWS-613
		EWS-612
		EWS-631





EWS-512 / BRK-512
 New clay facing brickwork
 Peterson Kolumba D23 Brick with 'Dove'
 mid grey coloured mortar

Dark Grey Mortar

Mid Grey (Dove) Mortar
 selected

Light Grey Mortar

- GENERAL NOTES**
1. Dimensions are in millimetres unless stated otherwise.
 2. Levels are in metres AOD unless stated otherwise.
 3. Dimensions govern. Do not scale off drawing.
 4. All dimensions to be verified on site before proceeding.
 5. All discrepancies to be notified in writing to Make Limited.
- © Make Limited 2014

- NOTES:**
1. All new and retained existing structure (walls, columns and downstands beams) to be confirmed by Structural Engineer.
 2. All plant areas and services risers (sizes locations, and routes) to be confirmed by Mechanical Engineer.
 3. Changes to the envelope from the consented planning scheme are to be reviewed and confirmed by Planning Consultant.
 4. Client to confirm Ground and Lower Ground retail strategy. Planning consent for LG/GF A1 retail limited to a maximum of 2,495sq.m. with A3 Use on Howland-Whitfield St corner.
 5. Refer to M&E consultant report for current M&E retail allowances.
 6. VRF's to perimeter of LG/GF are required if used as office.
 7. Access strategy to Ground and Lower Ground floors from street level is to be developed based on Use type and space planning.
 8. Part-M & DDA compliance (disabled toilets, ramps) to be reviewed by access consultant.
 9. Cleaning & maintenance to be reviewed (atrium, facade) by building maintenance consultant.
 10. Existing structure based on Arup original design drawings & PCA Survey (2010).
 11. New Structure based on engineers information.
 12. Terraces, landscaping, park, roof plant, and residential layouts illustrative, refer to separate reports.
 13. Additional terraces and changes to atrium to be confirmed by planning authority.
 14. Acoustic performance to be confirmed by acoustic consultant.

NOTE: Any areas measured from these plans by a quantity surveyor, relate to the likely areas of the building at the current stage of the design. Any decisions to be made on the basis of these predictions, whether as to project viability, pre-letting, lease agreement or the like should include due allowance for the increases and decreases inherent in the design development and building processes.

Rev	Date	Reason For Issue	Chk
07	27.05.16	Revised Stage E 2016	
06	26.02.16	Stage E 2016	KK
05	20.02.15	Tender Addendum 2015	
04	07.11.14	Tender Issue 2014	
03	27.10.14	Tender Issue 2014	
02	08.04.13	Tender Issue	
01	25.01.13	Stage E Issue	
00	21.08.12	Stage D Issue	

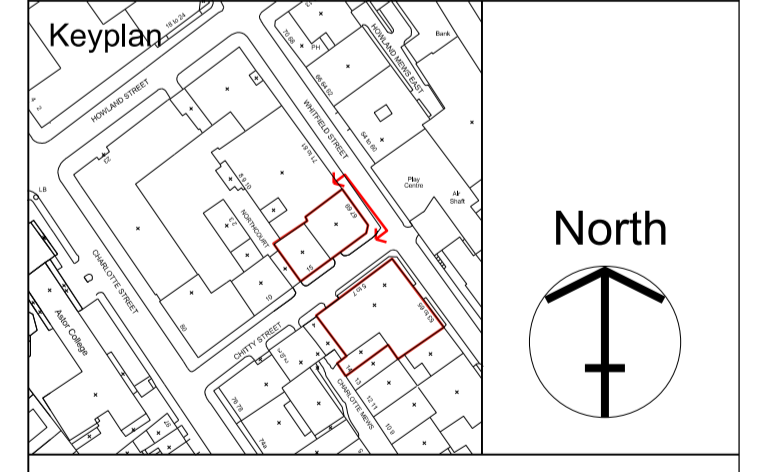
FOR TENDER

DRAWING STATUS

make

32 Cleveland Street,
 London, W1T 4JY
 tel +44 (0) 20 7636 5151
 info@makearchitects.com
 www.makearchitects.com

Client
Derwent London
 West London and Suburban
 Property Investments Ltd.
 W1S 2ER



Project
65 Whitfield street
 and 67-69 Whitfield street

Drawing Title
External Wall System Types
 Whitfield Street Elevation

Scale	Paper Size	Date
1:100	@A1	21.08.12

Project No.	Draw No.	Rev No.
0825	A8500	07

Retained facade systems	Brickwork systems	Window systems
EWS-511	EWS-512	EWS-611
EWS-514	EWS-512	EWS-614
		EWS-612
		EWS-615
		EWS-613
		EWS-631

