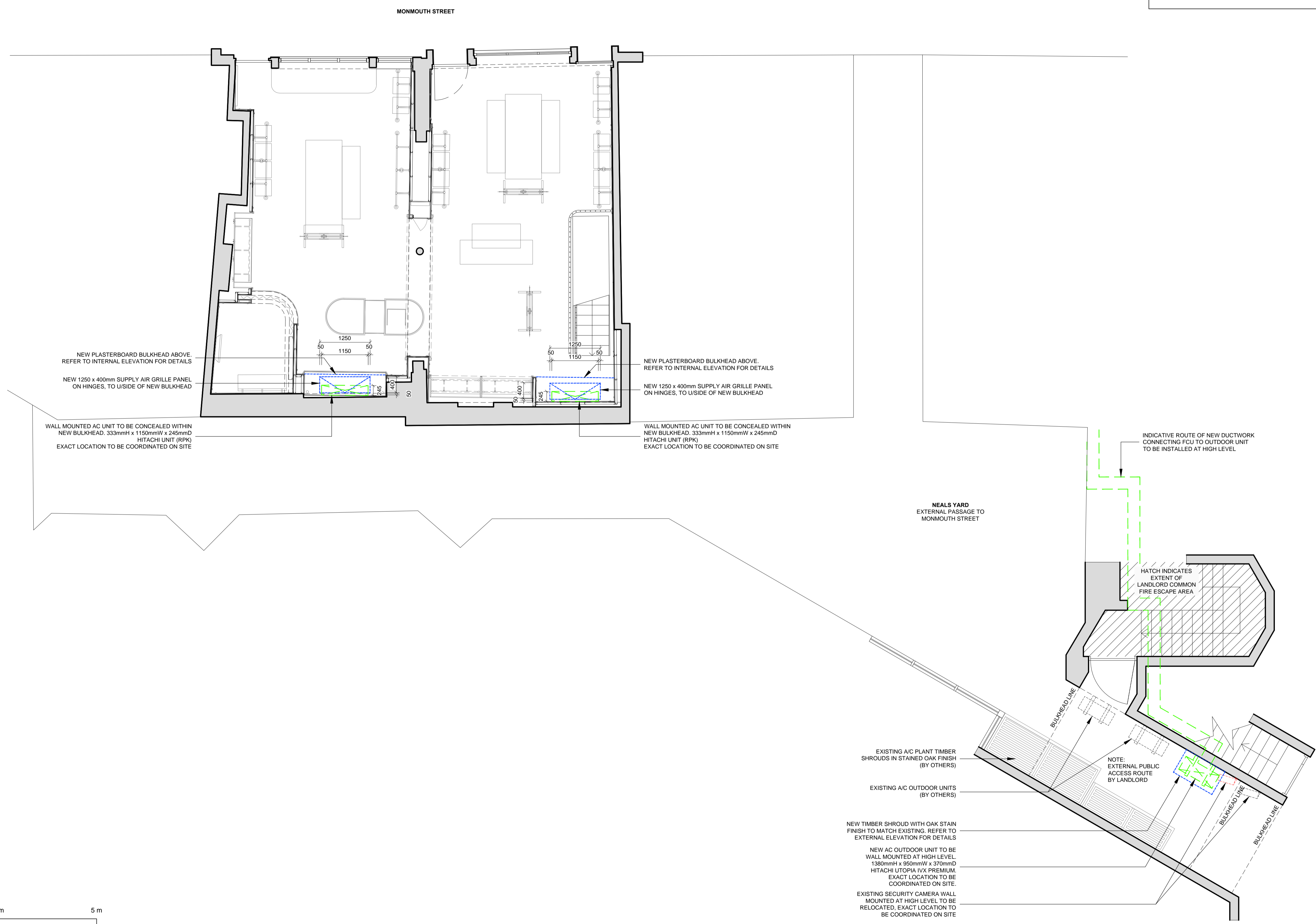
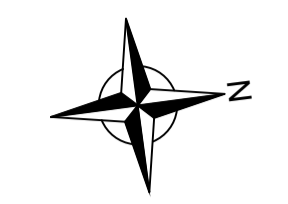


KEY NOTE LEGEND	
	EXISTING TO BE RELOCATED
	NEW AIR CONDITIONING UNITS
	NEW WORKS



NEW PLASTERBOARD BULKHEAD ABOVE.
REFER TO INTERNAL ELEVATION FOR DETAILS

NEW 1250 x 400mm SUPPLY AIR GRILLE PANEL
ON HINGES, TO U/SIDE OF NEW BULKHEAD

WALL MOUNTED AC UNIT TO BE CONCEALED WITHIN
NEW BULKHEAD. 333mmH x 1150mmW x 245mmD
HITACHI UNIT (RPK)
EXACT LOCATION TO BE COORDINATED ON SITE

NEW PLASTERBOARD BULKHEAD ABOVE.
REFER TO INTERNAL ELEVATION FOR DETAILS

NEW 1250 x 400mm SUPPLY AIR GRILLE PANEL
ON HINGES, TO U/SIDE OF NEW BULKHEAD

WALL MOUNTED AC UNIT TO BE CONCEALED WITHIN
NEW BULKHEAD. 333mmH x 1150mmW x 245mmD
HITACHI UNIT (RPK)
EXACT LOCATION TO BE COORDINATED ON SITE

NEALS YARD
EXTERNAL PASSAGE TO
MONMOUTH STREET

INDICATIVE ROUTE OF NEW DUCTWORK
CONNECTING FCU TO OUTDOOR UNIT
TO BE INSTALLED AT HIGH LEVEL

HATCH INDICATES
EXTENT OF
LANDLORD COMMON
FIRE ESCAPE AREA

EXISTING A/C PLANT TIMBER
SHROUDS IN STAINED OAK FINISH
(BY OTHERS)

EXISTING A/C OUTDOOR UNITS
(BY OTHERS)

NEW TIMBER SHROUD WITH OAK STAIN
FINISH TO MATCH EXISTING. REFER TO
EXTERNAL ELEVATION FOR DETAILS

NEW AC OUTDOOR UNIT TO BE
WALL MOUNTED AT HIGH LEVEL.
1380mmH x 850mmW x 370mmD
HITACHI UTOPIA IX PREMIUM.
EXACT LOCATION TO BE
COORDINATED ON SITE.

EXISTING SECURITY CAMERA WALL
MOUNTED AT HIGH LEVEL TO BE
RELOCATED. EXACT LOCATION TO
BE COORDINATED ON SITE

NOTE:
EXTERNAL PUBLIC
ACCESS ROUTE
BY LANDLORD

BULKHEAD LINE

BULKHEAD LINE

BULKHEAD LINE

1 GROUND FLOOR PLAN

1:50 @ A1 SIZE
1:100 @ A3 SIZE

ink.

LONDON OFFICE:
10 CHANCELLY ST. SE1 0UX
T. +44 (0) 20 7021 0561

CHRISTCHURCH OFFICE:
TOLSEY STUDIO, 46 HIGH ST
CHRISTCHURCH, BH23 1BN
T. +44 (0) 1202 496 222 www.inkassociates.co.uk

TENANT	LANDLORD

REV	COMMENT	AUTH	DATE

© COPYRIGHT REMAINS WITH INK ASSOCIATES LTD THIS DRAWING IS ISSUED ON THE CONDITION THAT IT IS NOT REPRODUCED, RETAINED OR DISCLOSED TO ANY UNAUTHORIZED PERSON EITHER WHOLLY OR IN PART WITHOUT THE CONSENT IN WRITING OF INK ASSOCIATES LTD. THIS DRAWING REMAINS THE INTELLECTUAL PROPERTY OF INK ASSOCIATES LTD. (SHRIMP) DO NOT SCALE FROM THIS DRAWING. ALL MEASUREMENTS ARE IN MILLIMETERS UNLESS STATED OTHERWISE. THE GENERAL CONTRACTOR (GC) IS RESPONSIBLE TO VERIFY DIMENSIONS ON SITE PRIOR TO MANUFACTURE. ANY DIMENSIONAL DISCREPANCIES ARE TO BE REPORTED TO INK ASSOCIATES LTD IMMEDIATELY. THE GENERAL CONTRACTOR (GC) IS TO PRODUCE A FULL SET OF SCALED CONSTRUCTION DRAWINGS FOR CONSTRUCTION AND APPROVAL PRIOR TO MANUFACTURE. THE CONTRACTOR IS TO ENSURE STRUCTURAL STABILITY OF ALL INSTALLATION DETAILS AND ELEMENTS. ALWAYS REFER TO RELATED DRAWINGS WHEN CONSIDERING INFORMATION CONTAINED WITHIN THIS DRAWING. ALL WORK CARRIED OUT ON SITE ARE TO BE IN ACCORDANCE WITH ALL CURRENT AND RELEVANT LOCAL BUILDING REGULATIONS AND CONSTRUCTION DESIGN MANAGEMENT (CDM) REGULATIONS. ALL MATERIALS & SURFACE FINISHES USED ON SITE ARE TO BE IN ACCORDANCE WITH APPROPRIATE FIRE RATINGS AS STIPULATED BY BUILDING CONTROL AND THE LOCAL FIRE OFFICER.		DATE CREATED: 27/11/2017	PROJECT TITLE: 35-37 MONMOUTH STREET	DRAWING TITLE: PROPOSED GROUND FLOOR PLAN
DRAWN BY: KA	CHECKED BY: DH	CLIENT: CLUB MONACO	DWG NO.:	SUFFIX:
SCALE / SHEET SIZE: AS SHOWN	PRINT DATE: 30/11/2017	PROJECT NO.:CM-017	P-03	REV.:/

APPROVAL			
----------	--	--	--