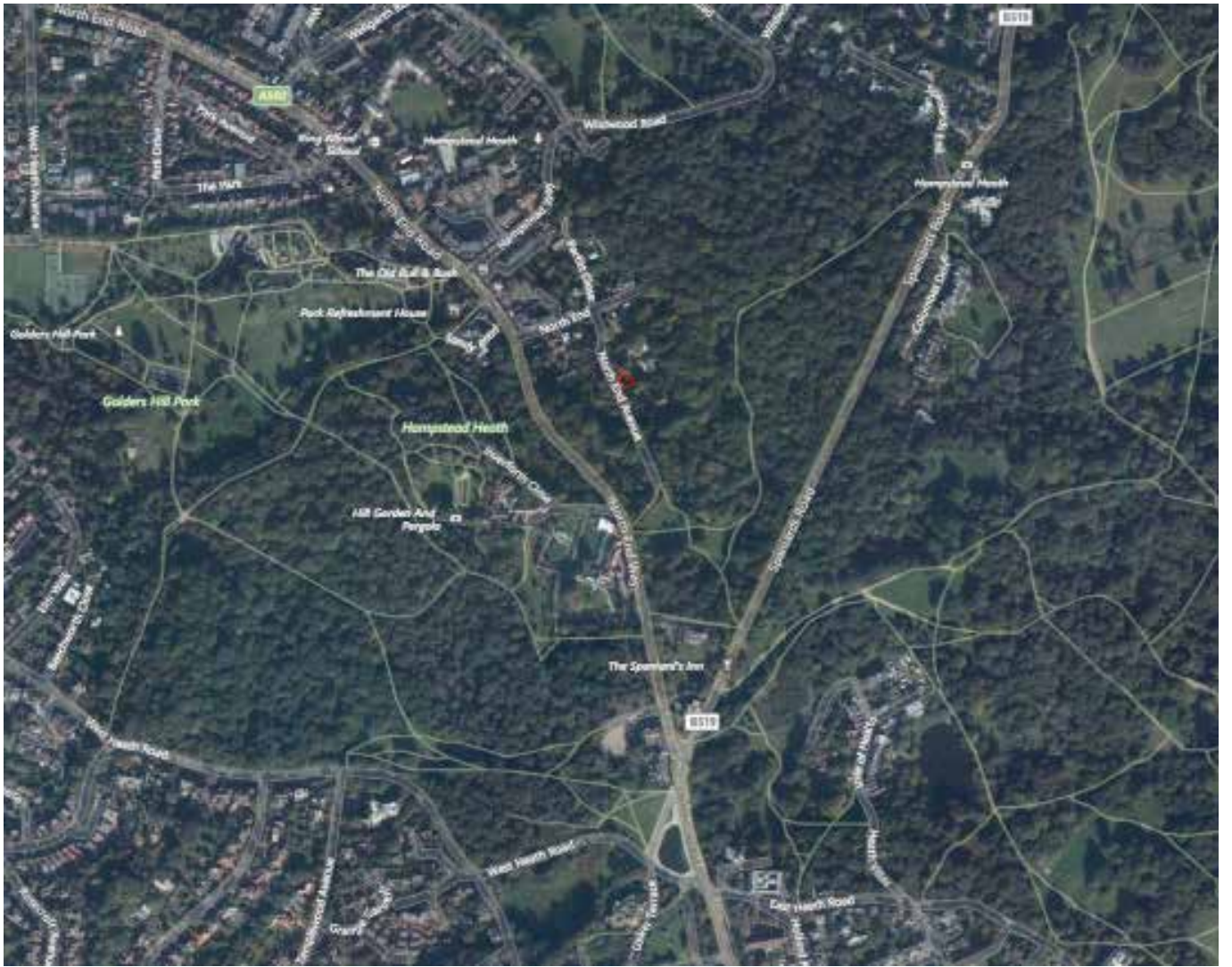


Photographic Survey

The Studio
North End Avenue
London NW3 7HP



Site location plan, 2018



Aerial view, 2018



Birds eye view: The Studio & surrounding context, North End Avenue, 2018



Aerial view: No. 3 North End Avenue, The Studio, Brandon House, The Lodge, Northstead & Northgate, 2018



Approach from North End Avenue looking south towards Hampstead Heath fire gate, 2016



North End Avenue looking south towards Hampstead Heath fire gate, 2016



The Studio, and entrance gate to The Lodge, Northgate & Northstead, 2016



The Approach from Hampstead Heath, 2016



Grade II Listed brick wall opposite The Studio, taken from North End Avenue, 2017



Entrance to The Studio from North End Avenue, 2016



The Studio from North End Avenue, 2017



The Studio's adjacency to the brick boundary wall, from North End Avenue, 2017



Vegetated verge and Silver birch to the west of the site on North End Avenue, 2017



Boundary wall to no. 3 North End Avenue, 2017



Access to Brandon House, and garage to the North of the site, 2017



No. 3 North End Avenue, 2017



Brick boundary walls to North End Avenue, 2017



Brick boundary wall to North End Avenue, 2018



Cedar Lodge, North End, 2018



Terrace House to the North of the site, North End Avenue, 2018



North Elevation of The Studio from the garden, 2016



A view of the Studio from the garden, 2016



The entrance gate and vegetated brick boundary wall to North End Avenue, 2016



The garden and vegetated boundary to North End Avenue, 2016



A view of the garden, looking North from the house, 2016



A view of the neighbouring garage to the North West of the site from the garden, 2016



Living room looking towards the garden, 2017



Living room, 2016



Living room, kitchen & dining room, 2016



The kitchen, 2017



Ground floor bedroom 1, 2016



Ground floor bedroom window less than 1m from boundary wall, 2017



Ground floor bedroom 2, 2016



Main Bathroom, 2016



Bedroom 1, first floor, 2016



Bedroom 1, first floor, with limited access and headroom, 2016