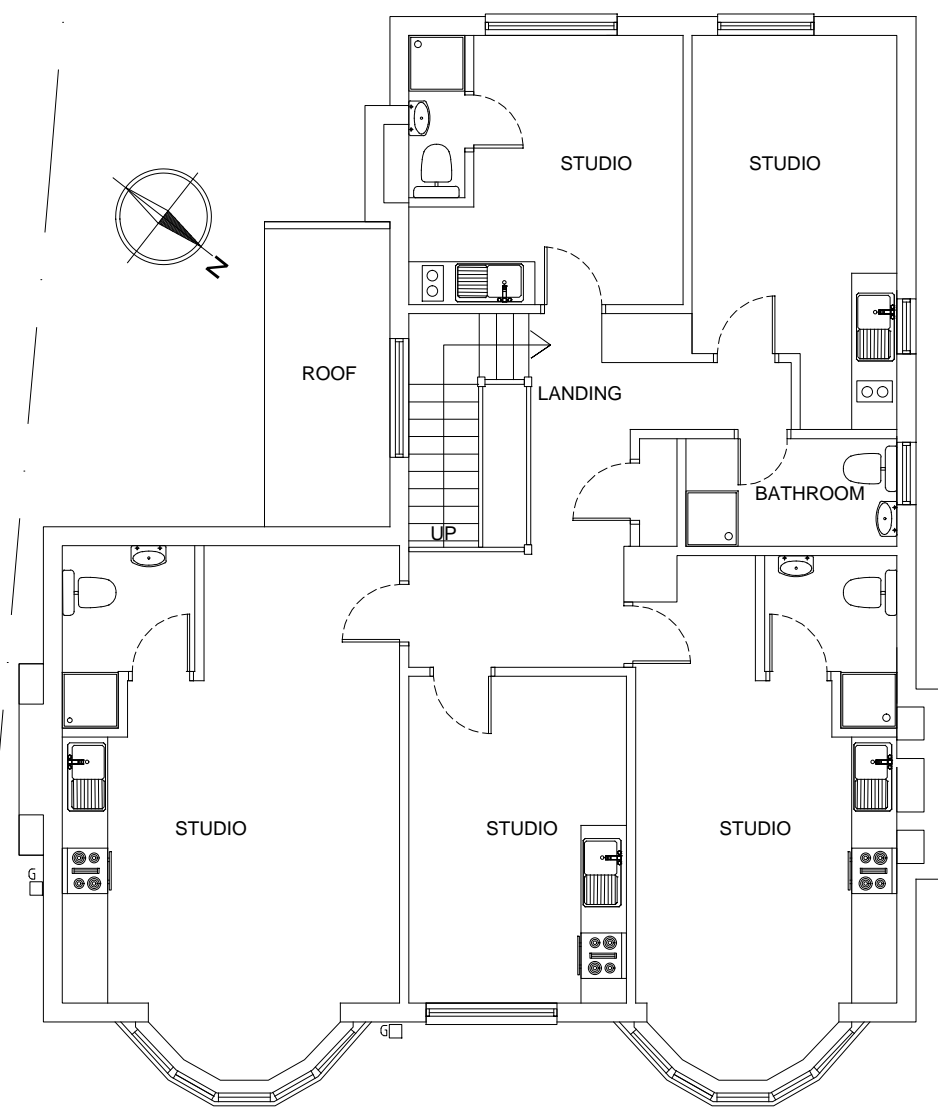
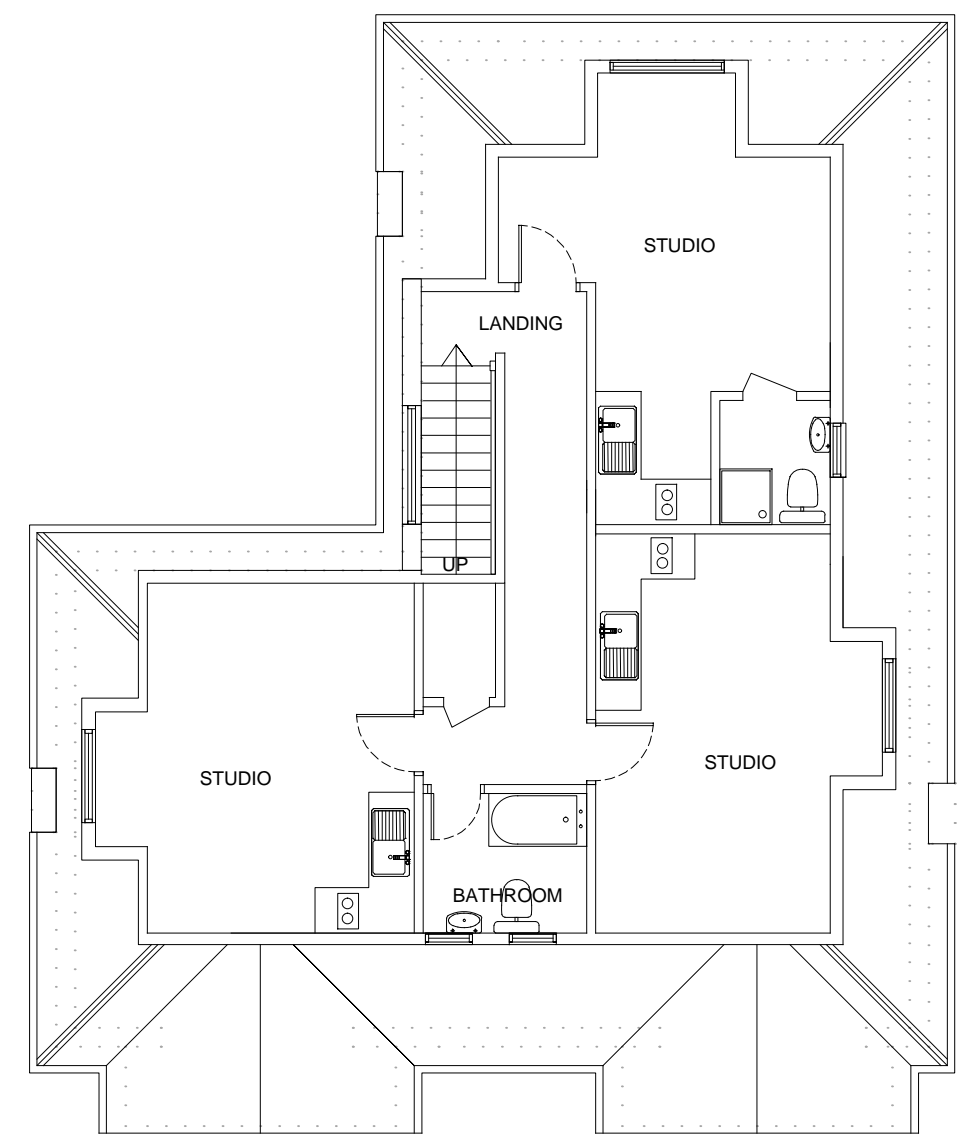


**EXISTING GROUND FLOOR PLAN 1:100**  
(unaltered by the proposal)



**EXISTING FIRST FLOOR PLAN 1:100**  
(unaltered by the proposal)



**EXISTING LOFT FLOOR PLAN 1:100**  
(unaltered by the proposal)



Revision B (March 2018): Further corrections to match site as-built and additional (north) elevation  
Revision A (March 2018): External changes to windows removed from plans

Rev.	Description	Date

Client	545 Finchley Road London, NW3 7BJ
Scheme	Conversion of existing HMO to a single dwellinghouse
Title	Existing Plans

Scale	1:100	Date	Oct 2017
Drawn by:	HS	Rev.	B
Checked by:		Approved by:	
Drawing No.	201710/545FR/01		

**Homecraft Design Studios**  
Homecraft Design Studios Group Ltd.  
3 Pennine Parade, Pennine Drive  
London, NW2 1NT  
Mobile: 07958 501134  
Email: h768@btinternet.com