

Japanese Garden

Specimens

Abbrev.	Qty	Name	Form	Grth (cm)	Hght (cm)	Clear Stem (cm)	Root Type	Size	Comments
A lam	3	Amelanchier lamarckii	Stndrd (Heavy)	12-14	300-350	175-200	RB	50 x 35cm	
C co 'V'	3	Cornus controversa 'Variegata' or Japanese Angelica (Aralia elata 'Variegata')			150-175		C	45L	
C k c	2	Cornus kousa chinensis or Japanese Angelica (Aralia elata 'Variegata')	Stndrd (Selected)	10-12	200-250	100-125	C	45L	
	2	Fatsia Japonica			125-150	Multi-stem	C	35L pot	
P 'Shi'	1	Prunus 'Shirotae'	Stndrd (Heavy)	12-14	350-425	175-200	RB	50 x 35cm	

Hedging - (18 linear metres) 'Ready Grown' Hedge supplied by www.readyhedge ltd.com

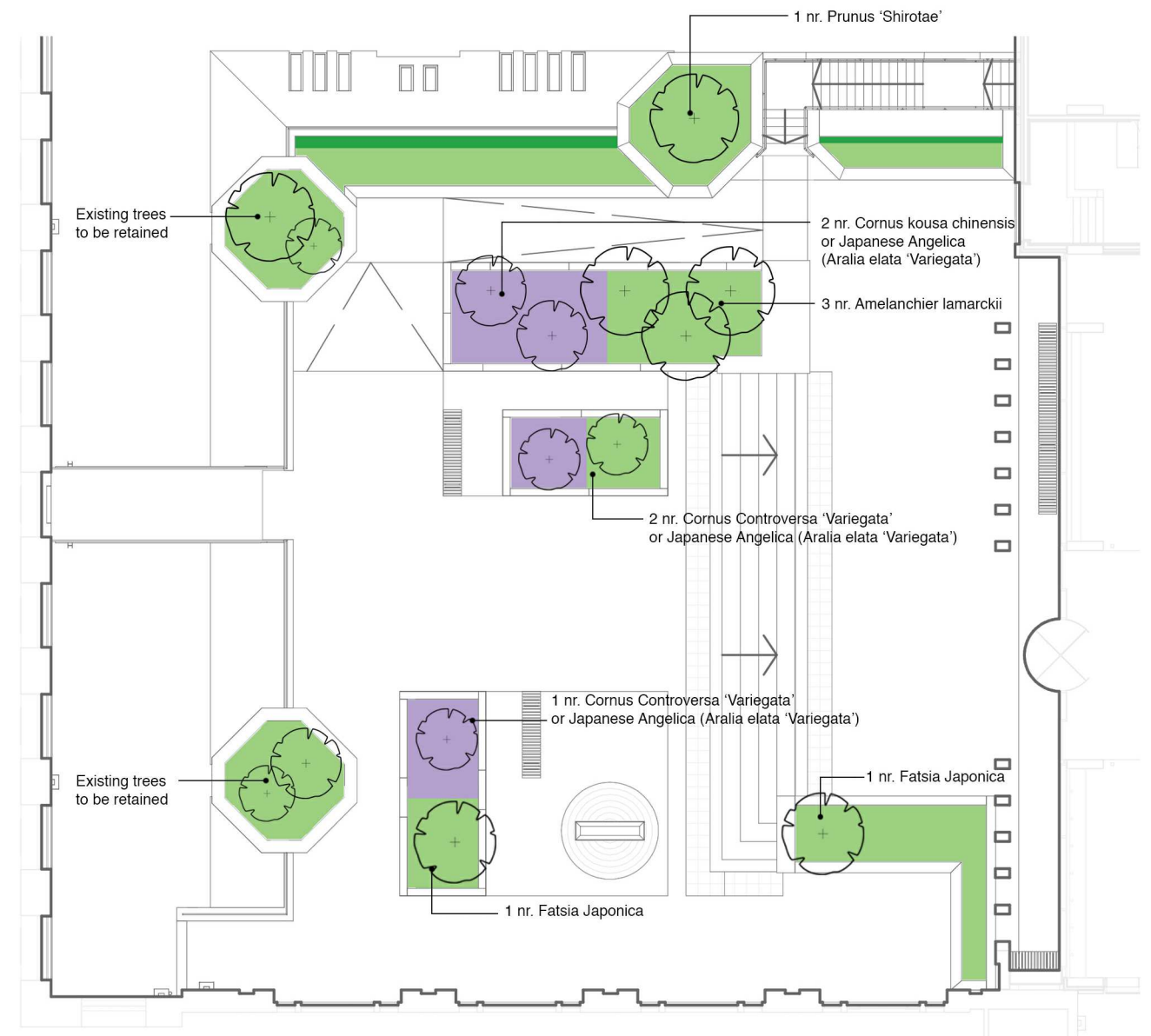
Abbrev.	Qty	Name	Form	Grth (cm)	Hght (cm)	Clear Stem (cm)	Root Type	Size	Comments
C be	18	Carpinus betulus	Hedge		150		C		40cm wide x 100cm long; neatly clipped ready grown hedge, UK Provenance

Enriched Ornamental Planting - (104m2)

Mix %	Qty	Name	Form	Grth (cm)	Hght (cm)	Clear Stem (cm)	Root Type	Size	Comments
15.00	78	Asplenium scolopendrium					C	3L	Full pot
8.00	42	Astrantia maxima					C	3L	Seed or vegetative propagation; full pot
15.00	47	Daphne laureola			30-40(D)		C	3L	
5.00	21	Deschampsia cespitosa 'Goldschleier'					C	3L	Vegetative propagation; full pot
8.00	50	Digitalis purpurea 'Alba'					C	2L	Seed propagation; full pot
15.00	78	Dryopteris filix-mas					C	3L	Full pot
8.00	58	Festuca glauca 'Elijah Blue'					C	2L	Vegetative propagation; full pot
5.00	26	Geranium 'Johnson's Blue'					C	3L	Vegetative propagation; full pot
5.00	26	Geranium pratense					C	2L	Seed propagation; full pot
8.00	33	Hakonechloa macra 'Aureola'					C	3L	Vegetative propagation; full pot
8.00	33	Pulmonaria officinalis 'Sissinghurst White'					C	3L	Vegetative propagation; full pot

Grass and spring flowers - (29m2)

Mix %	Qty	Name	Form	Grth (cm)	Hght (cm)	Clear Stem (cm)	Root Type	Size	Comments
33.33	67	Brunnera macrophylla					C	2L	Seed or vegetative propagation; full pot
33.33	241	Galanthus nivalis 'Flore Pleno'	(Topsize)						
33.33	67	Luzula sylvatica 'Marginata'					C	2L	Vegetative propagation; full pot



Images below show some of the proposed plant species identified in the table above.



Rev.	Date	Description
P01	23/04/2018	First issue: planning application



Nicholas Hare Architects

3 Barnsbury Square London N1 1JL

telephone +44 (0)20 7619 1670
 fax +44 (0)20 7619 1671
 e-mail 689ud@nicholashare.co.uk

(689)

project UCL New Student Centre
 for University College London
 title Japanese Garden - Planting Strategy (Sheet 2 of 2)

status **FOR PLANNING**
 To be read in conjunction with all relevant information - do not scale

scale - size A3 drawing number 031-51-0100-DR-A-PL031-XX rev. P01