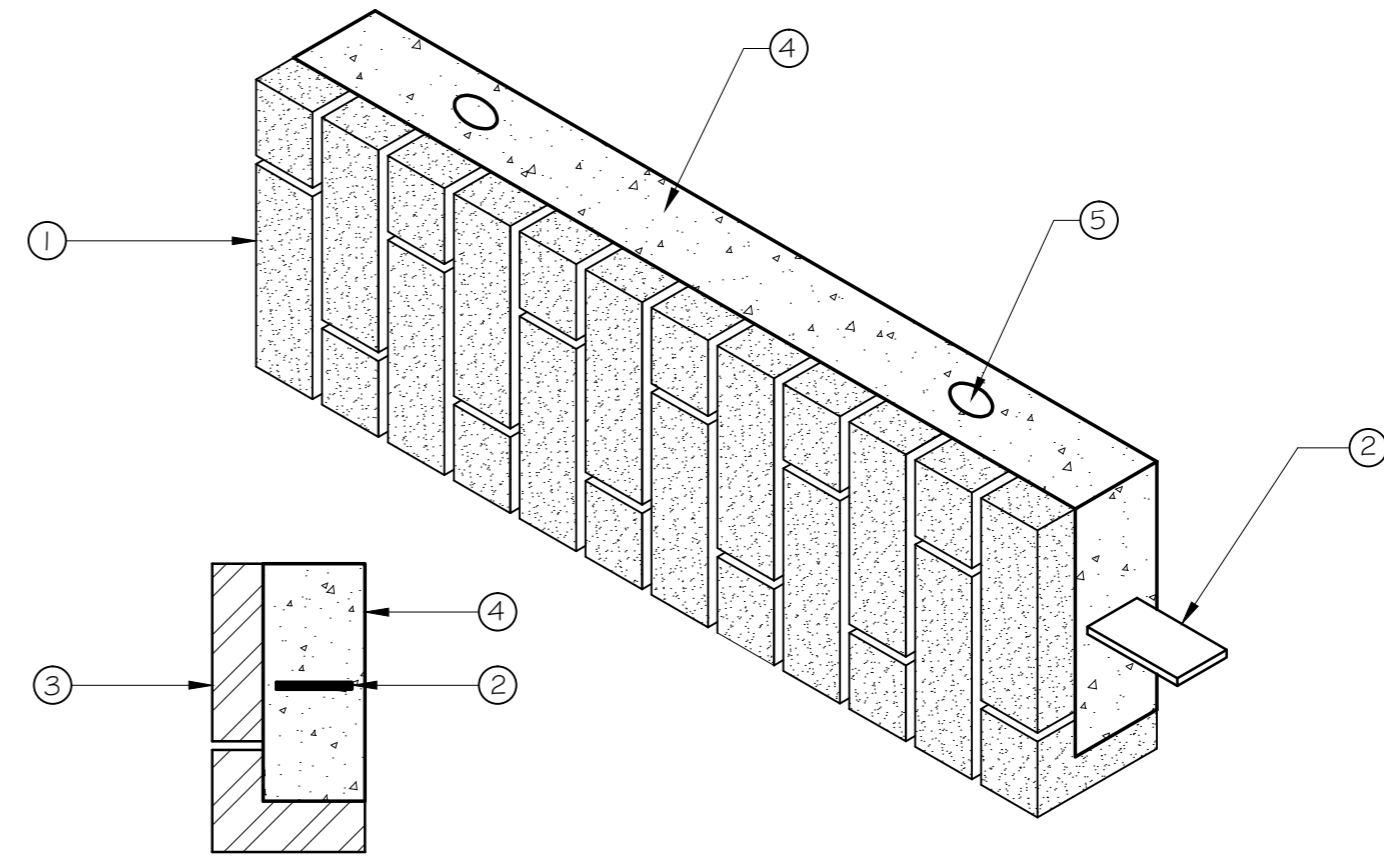


Ground Floor Plan Showing Remedial works Requirements

LEGEND

- ④ - Galvanized restraint straps to be provided at underside of First floor at maximum 900crs. Refer to detail DOI on this page



D02 - Pre Formed Arch  
Concrete Backing Lintel

N.T.S

- ① Tapered voussiors.
- ② Stainless steel end bearing plates cast into concrete lintels.
- ③ Facing brick slips, factory bonded to face and soffit of lintel.
- ④ Reinforced concrete backing lintel.
- ⑤ Sockets for lifting eyes.

A	Detail D02 added	30/04/18
Rev	Description	Date

Client  
Pearl & Coutts

Architect

Project  
5 Great James Place

Drawing Title  
Ground Floor Plan Showing Remedial Works Requirements

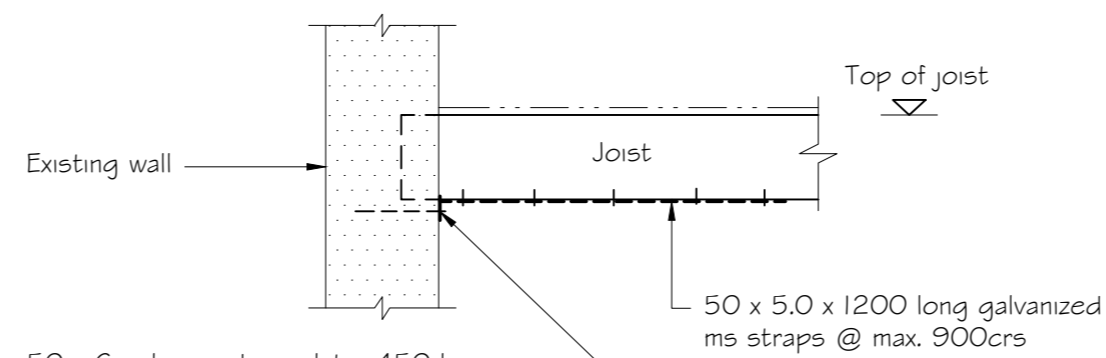
**howardcavanna**  
consulting engineers

3a Sandford Road  
Sutton, Surrey  
SM3 9RN

t: 020 8644 0905  
e: mail@howardcavanna.co.uk  
w: www.howardcavanna.co.uk

Scale: 1:50 @ A2	Drawn by:	Date:
---------------------	-----------	-------

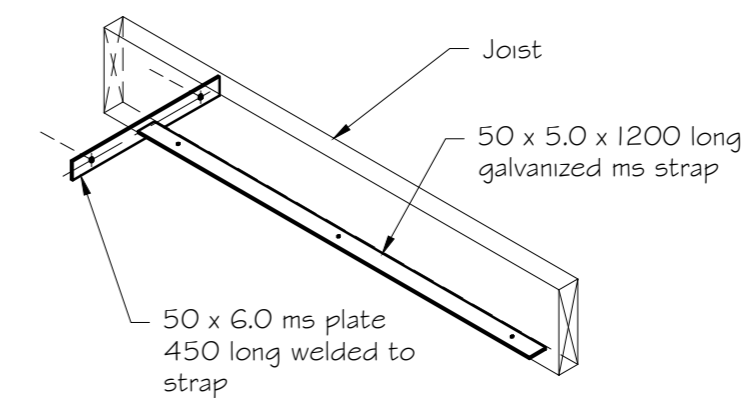
Dwg No.  
2018 039/R02A



50 x 6 galvanized ms plate, 450 long, welded to strap and fixed to wall using 2no. 8mm Ørods in chemical anchors (300mm penetration in 440 thick walls) (200mm penetration in 330 thick walls) (150mm penetration in 215 thick walls)

DOI - Wall Restraint Straps  
(Joists Spanning onto Wall)

Scale 1:20



Isometric View

