

CHAPTER HOUSE

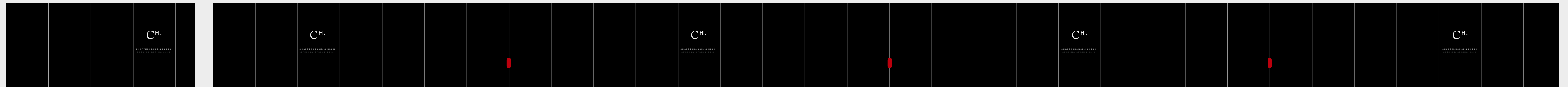
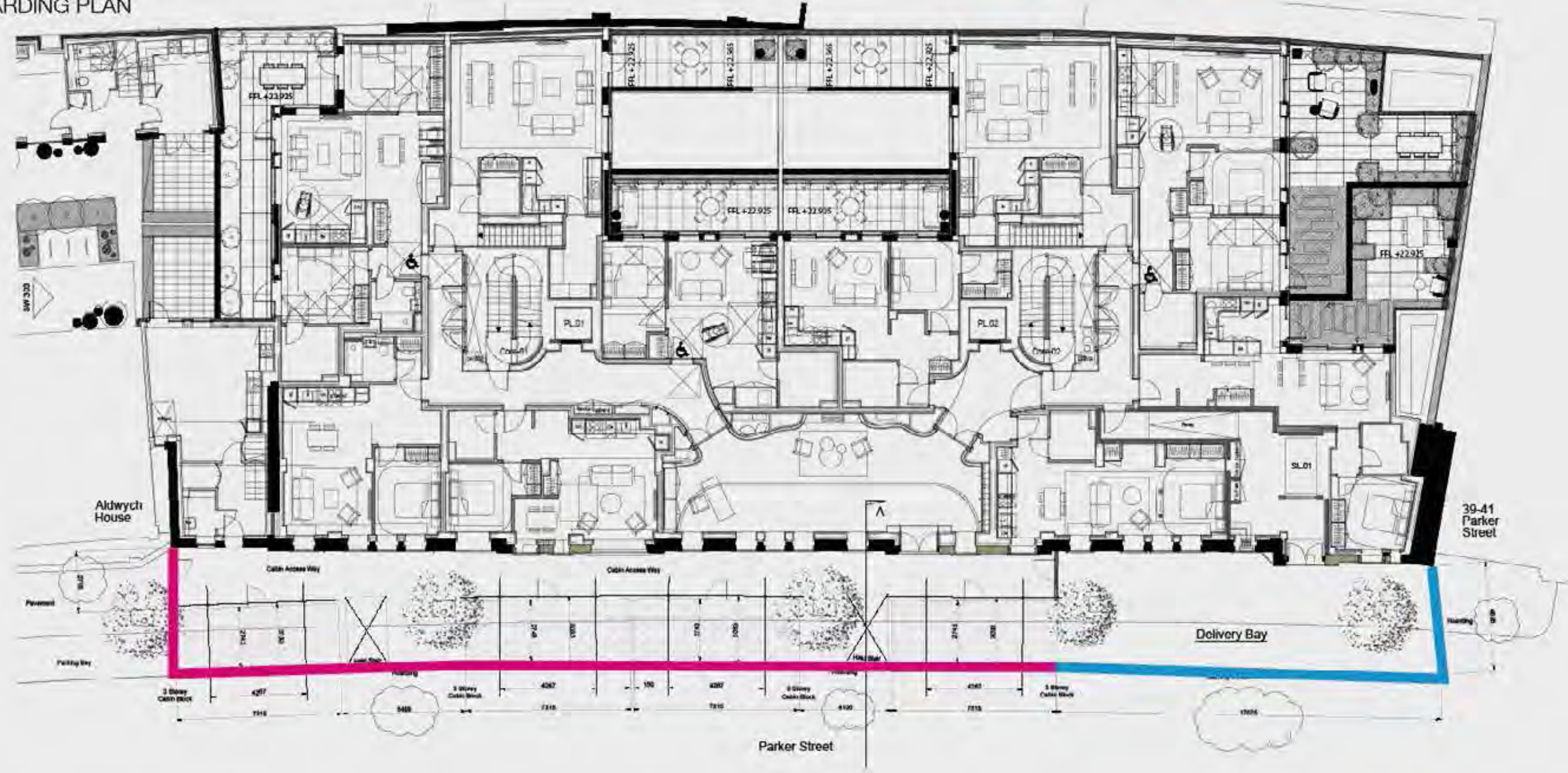
---

STREET LEVEL HOARDING

*Hingston Studio*  
*25th April 2018*

LONDONNEWCASTLE  
HOARDING PLAN

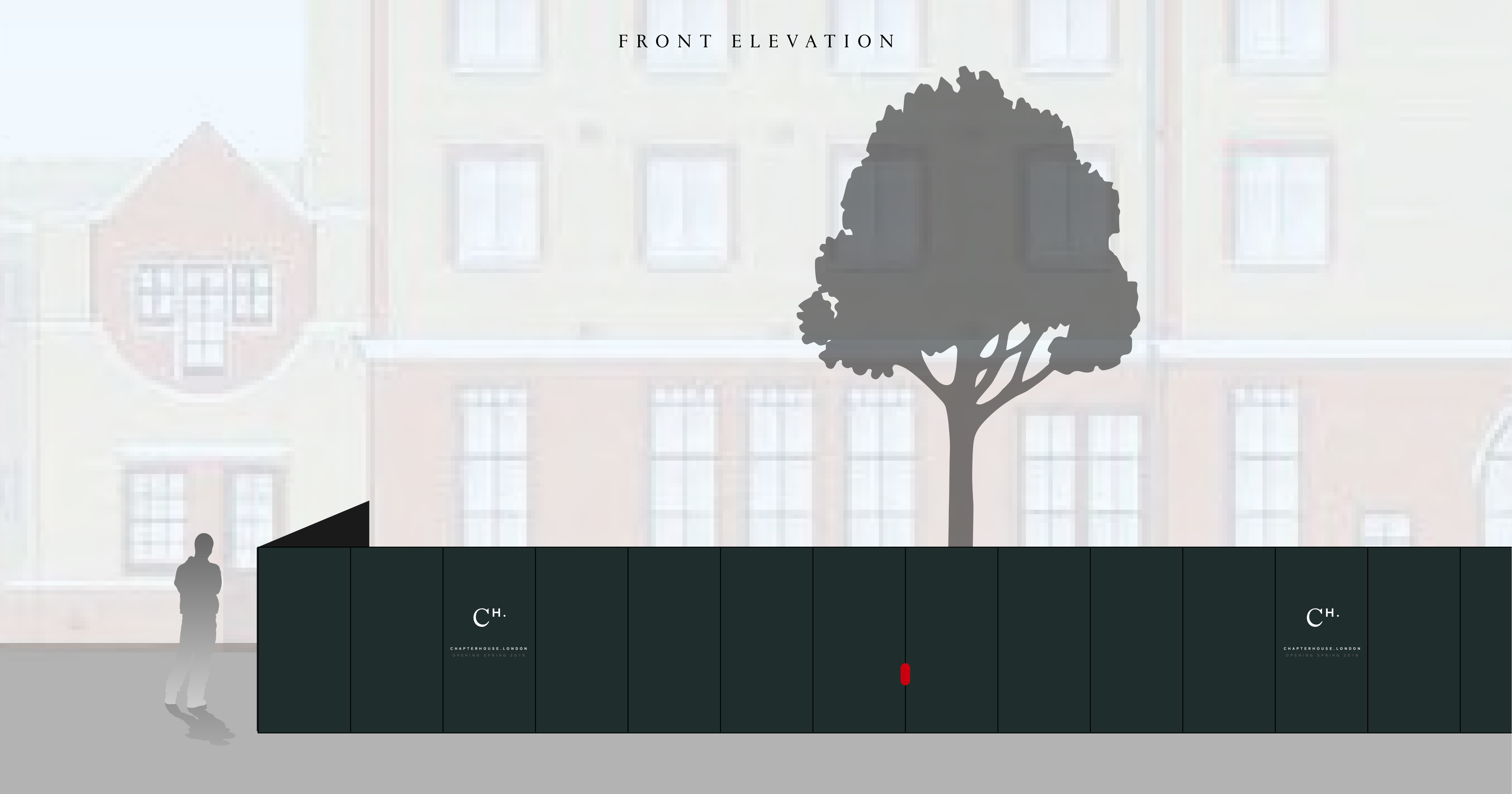
HOARDING    HERAS FENCING



HOARDING ELEVATIONS

PANEL SIZE  
1220mm (w) x 2440mm (h)

FRONT ELEVATION



CH.

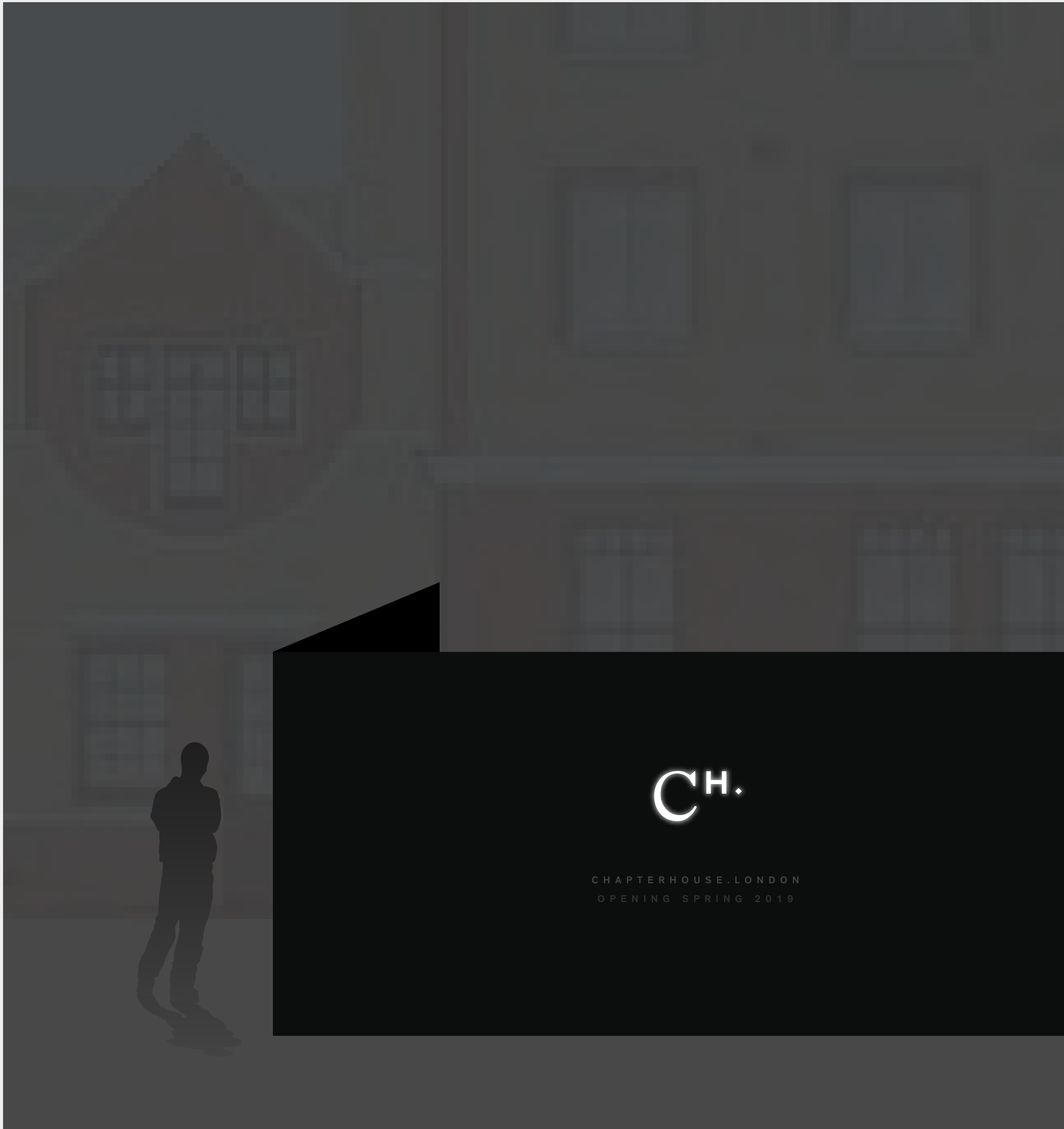
CHAPTERHOUSE. LONDON  
OPENING SPRING 2018

CH.

CHAPTERHOUSE. LONDON  
OPENING SPRING 2018

FRONT ELEVATION





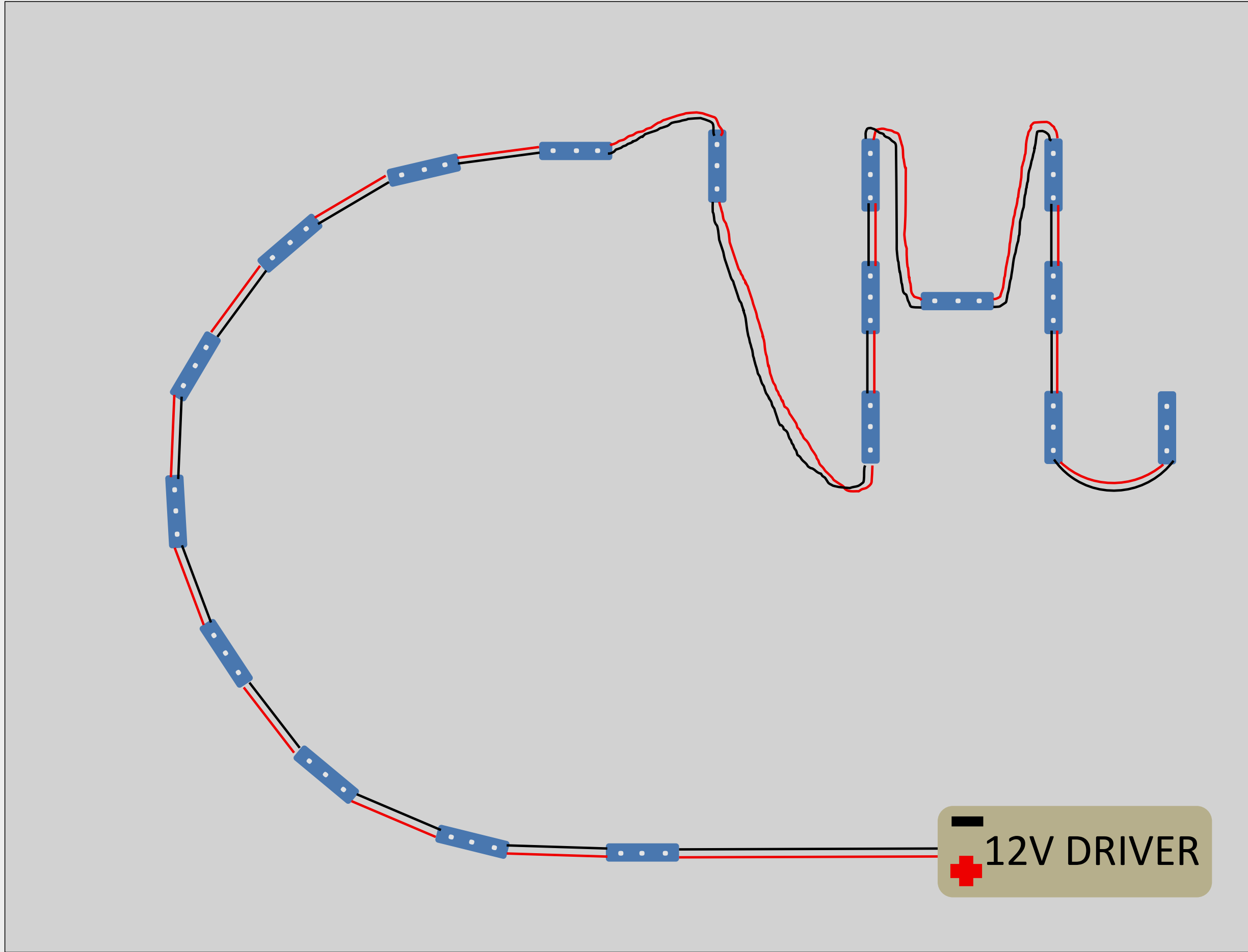
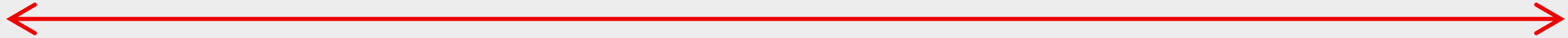
CH.

CHAPTERHOUSE.LONDON  
OPENING SPRING 2019



FOLDED DIBOND PANEL WITH 80MM DEEP RETURNS ON ALL 4 SIDES TO CREATE A ENCLOSURE.

600mm



450mm

3 LED Module Sm-3CW12-50  
120 lumens/module  
12v  
1.2w per module  
IP68 rated

The length of LED required is approx 2000MM

1 x 35w Driver

1 x Junction box

SIDE ELEVATION (WEST FACING)  
HOARDING PANELS

SITE  
ENTRANCE

WE APOLOGISE FOR ANY  
INCONVENIENCE CAUSED  
DURING THESE WORKS



IF YOU REQUIRE ANY INFORMATION ON THESE AND RELATED SERVICES  
PLEASE CONTACT US ON 020 7011 1111 OR WWW.CHapterHOUSE.CO.UK



**DANGER**  
CHILDREN MUST NOT  
PLAY ON THIS SITE

TARGETS ARE ADVISED  
TO KEEP CHILDREN  
AWAY FROM THE  
CONSTRUCTION SITE

SALES AGENT ONE  
AGENT ONE  
AGENTONE.COM

SALES AGENT TWO  
AGENT TWO  
AGENTTWO.COM

FOR RESIDENTIAL ENQUIRIES,  
PLEASE WRITE TO US AT  
SALES@LONDONNEWCASTLE.CO.UK

ARCHITECTS  
ROBIN PARTINGTON & PARTNERS  
RPPLONDON.COM

CONSTRUCTION  
ARDMORE  
ARMOREGROUP.CO.UK

LANDSCAPING  
ANDY STURGEON DESIGN  
ANDYSTURGEON.COM

CH.

CHAPTERHOUSE.LONDON  
OPENING SPRING 2019



SIDE ELEVATION (EAST FACING)

PVC WRAP

SALES AGENT ONE  
AGENT ONE  
AGENTONE.COM

SALES AGENT TWO  
AGENT TWO  
AGENTTWO.COM

CHAPTERHOUSE.LONDON  
OPENING SPRING 2019

FOR RESIDENTIAL ENQUIRIES,  
PLEASE WRITE TO US AT  
SALES@LONDONNEWCASTLE.CO.UK

ARCHITECTS  
ROBIN PARTINGTON & PARTNERS  
RPPLONDON.COM

CONSTRUCTION  
ARMORE  
ARMOREGROUP.CO.UK

LANDSCAPING  
ANDY STURGEON DESIGN  
ANDYSTURGEON.COM





A3 DANGER SIGNS

WE APOLOGISE FOR ANY  
INCONVENIENCE CAUSED  
DURING THESE WORKS



IF YOU EXPERIENCE ANY PROBLEMS OR WOULD LIKE FURTHER INFORMATION  
PLEASE CONTACT US ON 0208 344 0300 [WWW.ARDMOREGROUP.CO.UK](http://WWW.ARDMOREGROUP.CO.UK)



**DANGER**  
CHILDREN MUST NOT  
PLAY ON THIS SITE

PARENTS ARE ADVISED  
TO WARN CHILDREN  
OF THE DANGERS OF  
CONSTRUCTION SITES

THANK YOU