

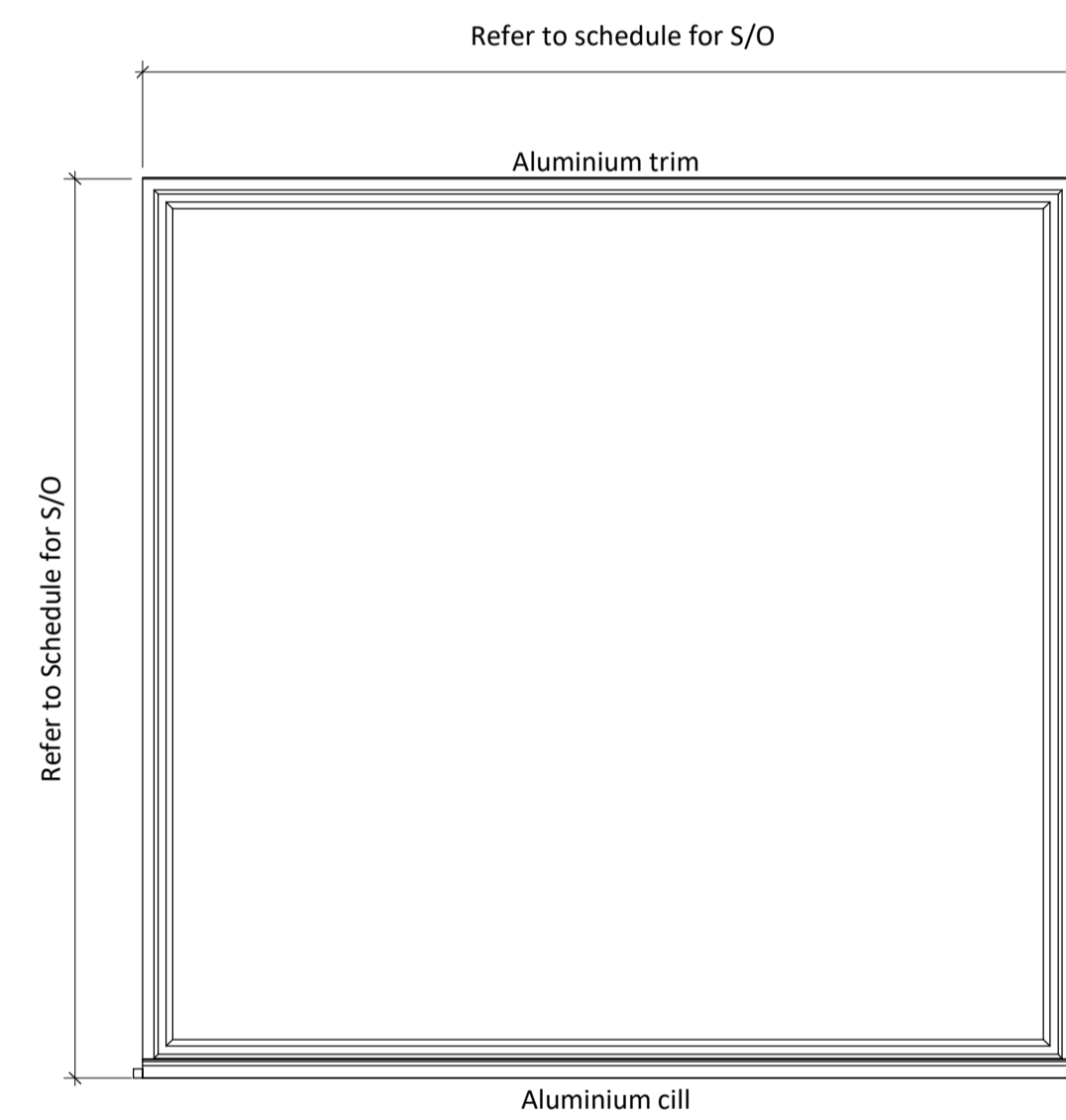
GSSARCHITECTURE - WES Proposed Extension - Window Schedule

Number	Location	Window Type	Width	Height	Jamb Detail	Head Detail	Cill detail	Opening Light	Comments
1	LARGE PRACTICE ROOM/RECORDING STUDIO	A	2485	2400	A	A	A	Fixed	
3	MUSIC RECITAL	B	2035	1800	A	A	A	Fixed	
4	MUSIC RECITAL	B	2035	1800	A	A	A	Fixed	
5	MUSIC RECITAL	B	2035	1800	A	A	A	Fixed	
6	MUSIC RECITAL	B	2035	1800	A	A	A	Fixed	
7	CIRCULATION	E	2485	2410	A	A	A	Fixed	Spandrel panel to top panel
8	STAFF	G	910	2400	A	A	A	Top Hung	Window restrictors
9	DRAMA STUDIO	G	910	2400	A	A	A	Top Hung	Window restrictors
10	DRAMA STUDIO	G	910	2400	A	A	A	Top Hung	Window restrictors
11	DRAMA STUDIO	G	910	2400	A	A	A	Top Hung	Window restrictors
12	DRAMA STUDIO	A	2485	2400	A	A	A	Fixed	
13	DRAMA STUDIO	A	2485	2400	A	A	A	Fixed	
14	DRAMA STUDIO	G	910	2400	A	A	A	Top Hung	Window restrictors
15	DRAMA STUDIO	A	2485	2400	A	A	A	Fixed	
16	DRAMA STUDIO	D	2485	2410	A	A	A	Fixed	Ventilation louvres to M+E engineer's specification. Increase frame depth to suit attenuators
17	CIRCULATION	D	2485	2410	A	A	A	Fixed	Ventilation louvres to M+E engineer's specification. Increase frame depth to suit attenuators
18	CIRCULATION	G	910	2400	A	A	A	Top Hung	Window restrictors
19	CIRCULATION	G	910	2400	A	A	A	Top Hung	Window restrictors
20	CIRCULATION	G	910	2400	A	A	A	Top Hung	Window restrictors
21	CIRCULATION	G	910	2400	A	A	A	Top Hung	Window restrictors
22	CIRCULATION	G	910	2400	A	A	A	Top Hung	Window restrictors
23	MUSIC	X	2515	2335				To match existing	FD60 fire rated windows to replace existing
24	MUSIC	X	2515	2335				To match existing	FD60 fire rated windows to replace existing

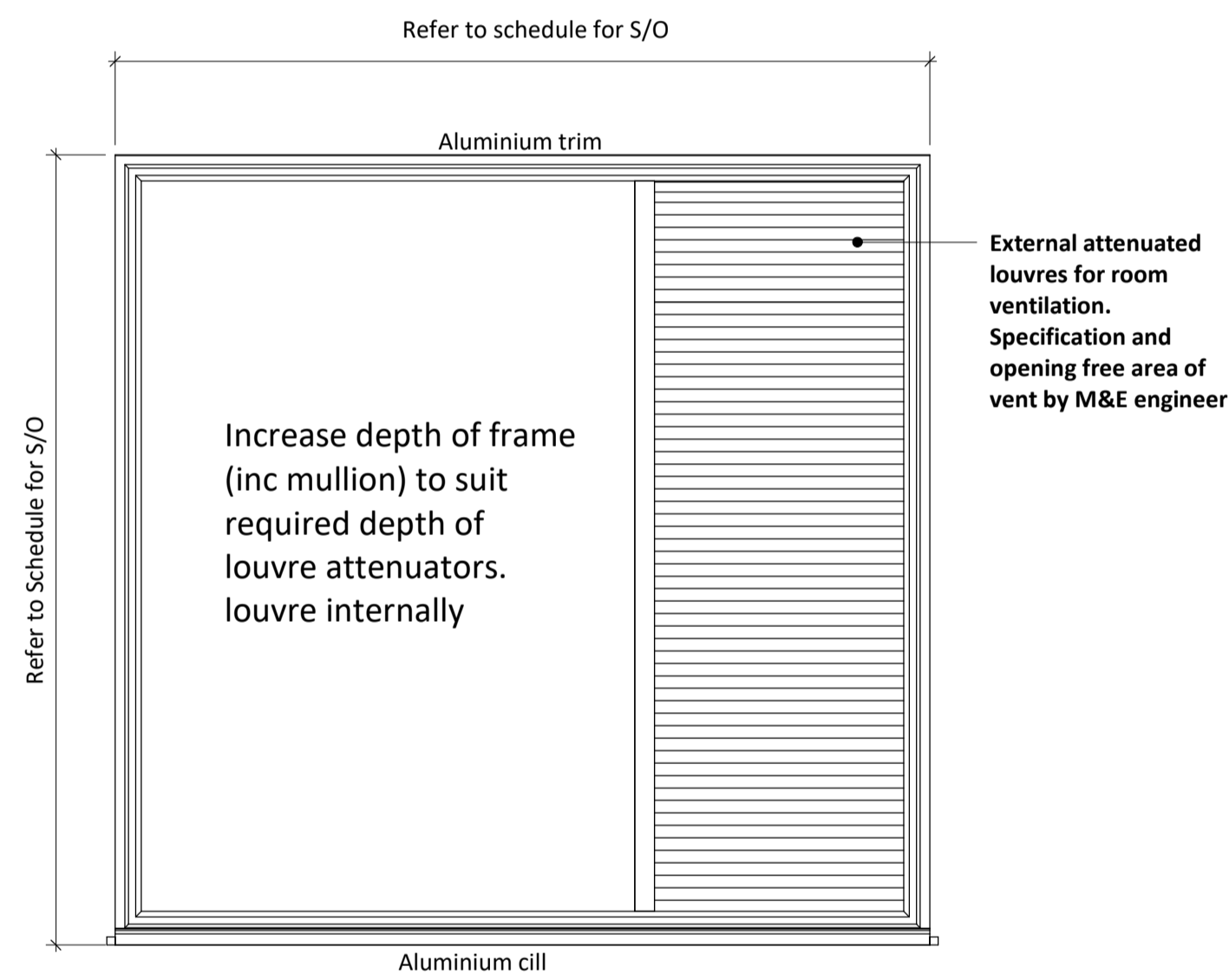
Do not scale from this drawing for construction or acquisition purposes. Responsibility is not accepted for errors made by others in scaling from this drawing. All construction information must be taken from figured dimensions only. All dimensions and levels must be checked on site and discrepancies between drawings and specification must be reported to GSSArchitecture.
© Copyright GSSArchitecture

Ordnance Survey © Crown Copyright 2017. All rights reserved. Licence number GSS 100017356.

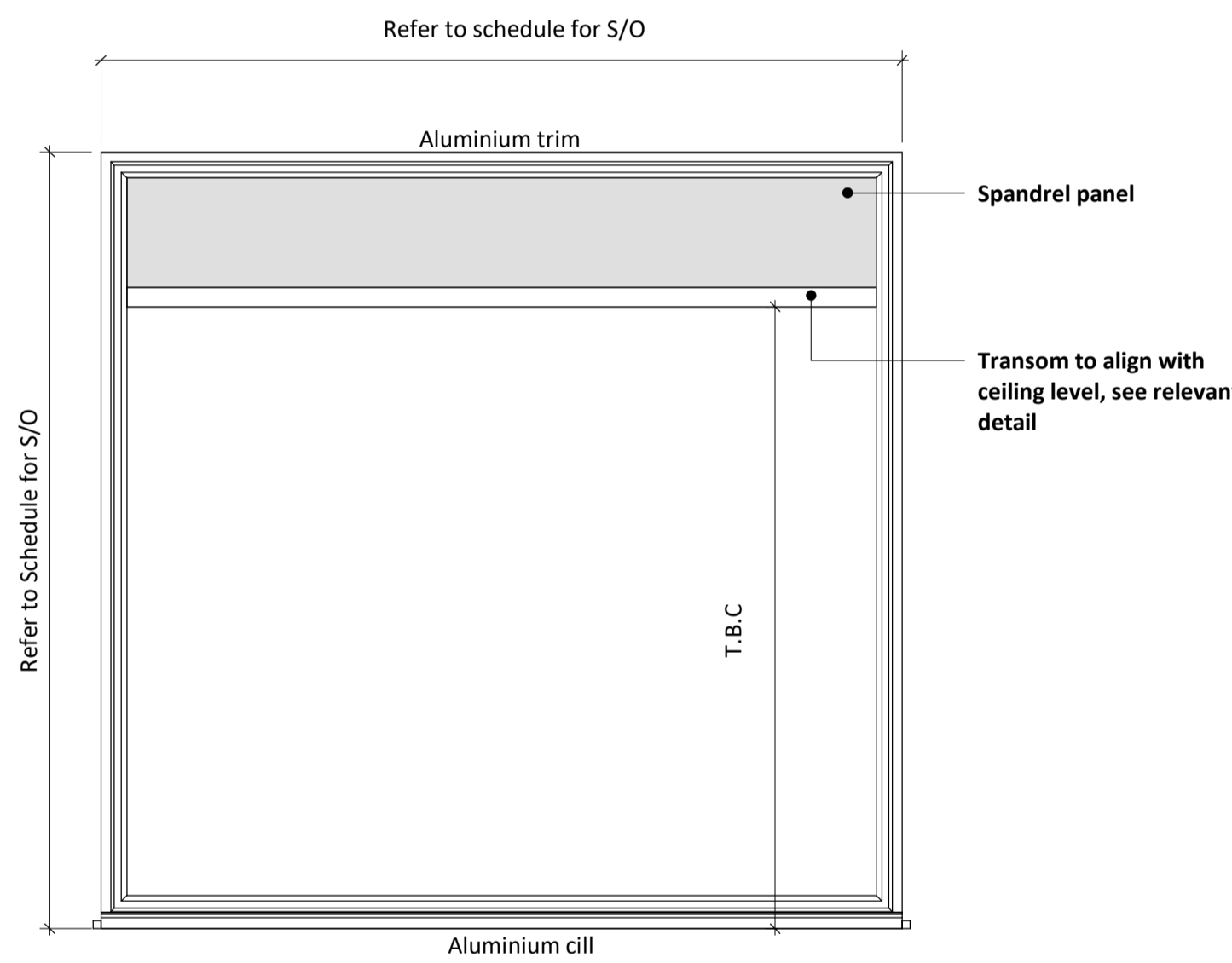
Map Data Copyright 2017 Google.



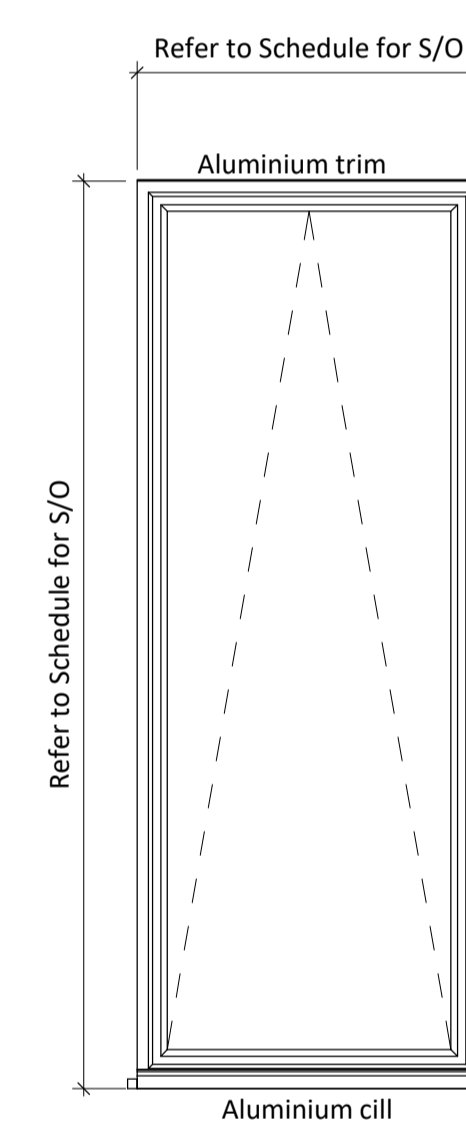
WINDOW TYPE A



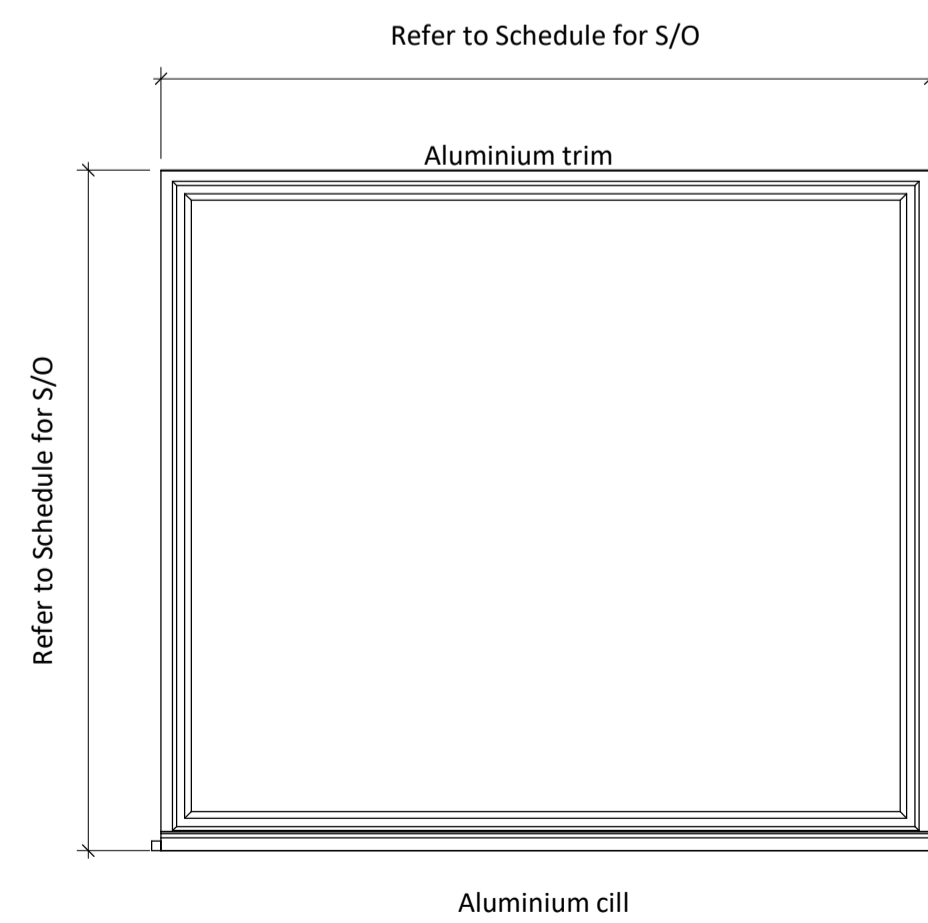
WINDOW TYPE D



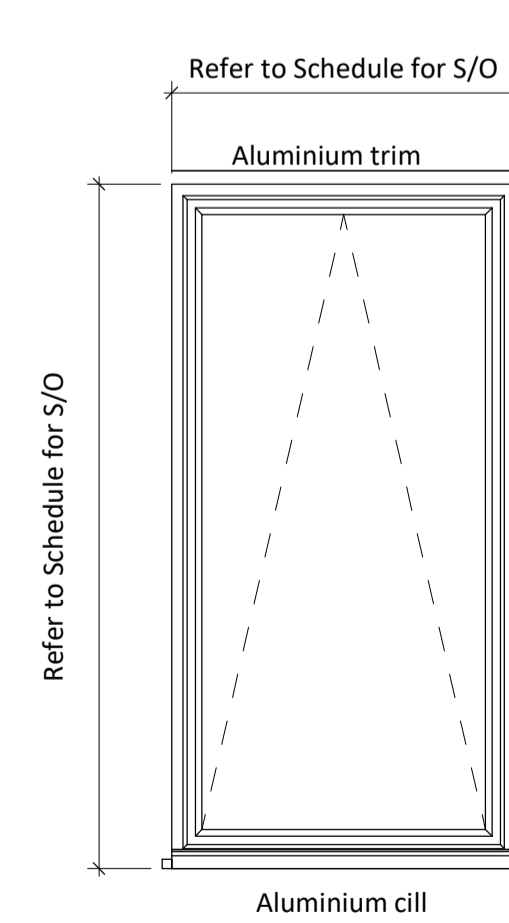
WINDOW TYPE E



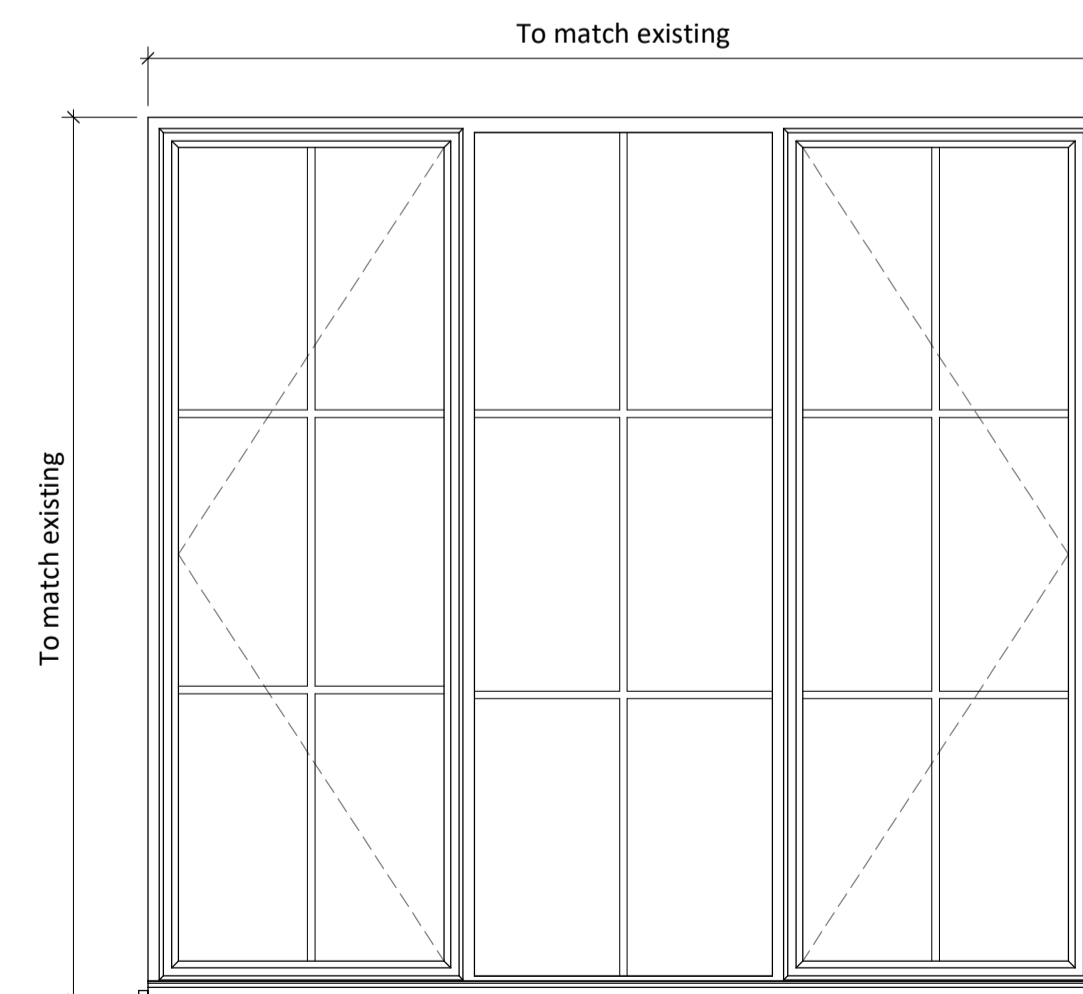
WINDOW TYPE G



WINDOW TYPE B



WINDOW TYPE F



WINDOW TYPE X

Composite timber and aluminium windows. L10/413
U-Value=1.5W/m2.K
G-Value= 0.5
All opening and accessible windows will be to BS PAS 24-2012 with laminated glazing to min P1A rating.
All fixings to structure to be approved by and in conjunction with SE and cladding panel manufacturer

General Notes:

- All ironmongery shown indicatively, samples to be confirmed with clients before ordering
- All glazing to be toughened unless otherwise specified
- All sizes and dimensions are to be checked on site prior to manufacture of any components.
- All sizes and dimensions to be checked on site prior to manufacture of any components. A detailed site survey must be allowed for by the main contractor. Sizes given in these drawings are for guidance only.
- Background ventilation to M+E engineer's specification
- All restrictors to be 100mm

Rev.	Date	Drawn	Check	Description
B	01.12.17	AP	BFLA	Stage 4 Issue
A	24.11.17	RCG	BFLA	Contractor's Proposal

gssarchitecture
35 HEADLANDS, KETTERING,
NORTHANTS, NN15 7ES
Telephone: 01536 513 165. Email: gss@gotch.co.uk,
Web: www.gssarchitecture.com
Gloucester: 01452 525 019, Harrogate: 01423 815 121,
Milton Keynes: 01908 255 620, Newcastle: 01913 898 917

Project Title:
William Ellis School

Client:
Farrans Construction

Drawing Title:
WES Extension Window Schedule and Elevations

File Number: Sch284

Drawn By: LPMCJ

Checked By: BFLA

Scale@A1: As indicated **Date:** 28/09/17

Dwg No: (31)3110 **Rev:** B