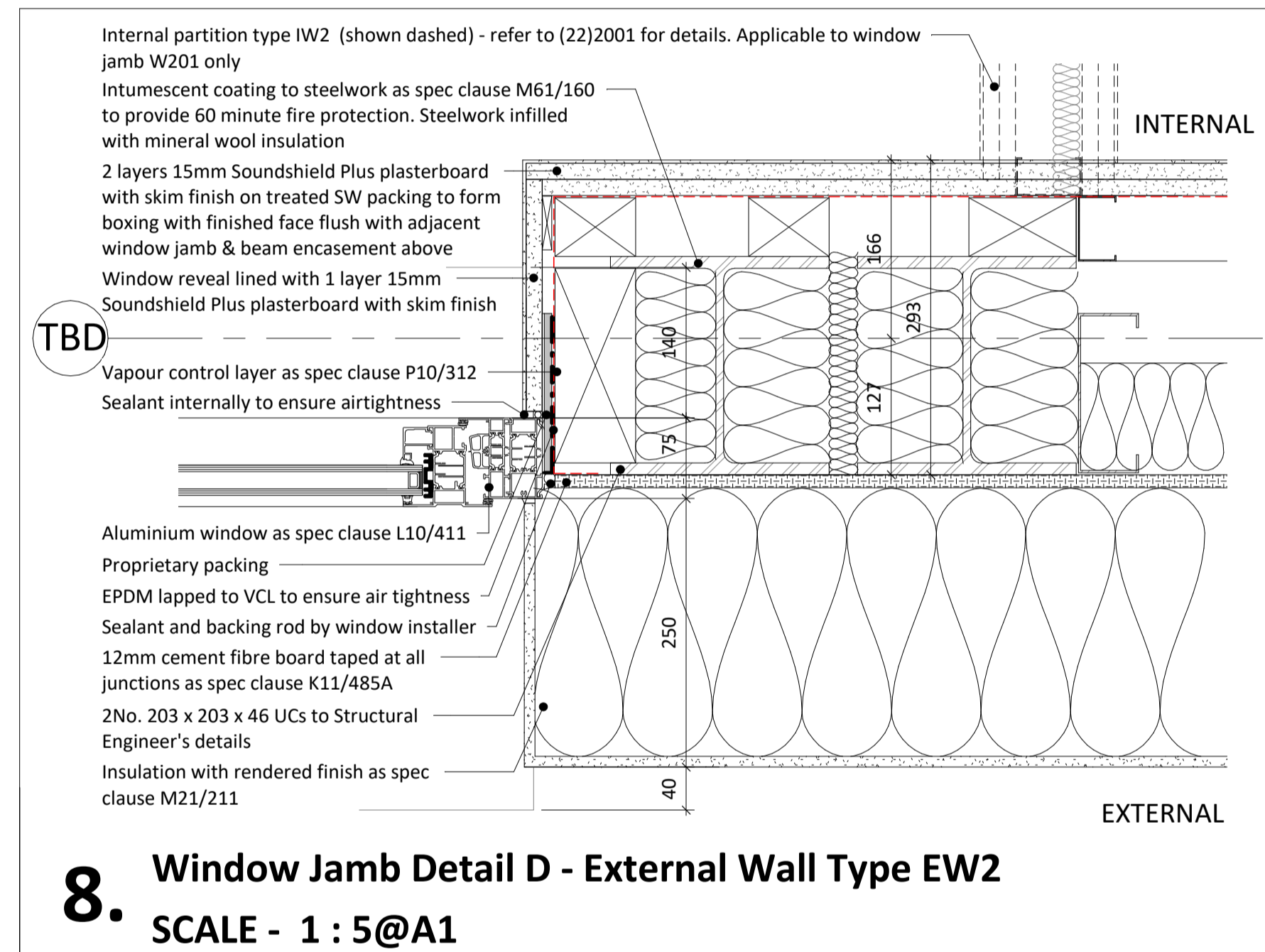
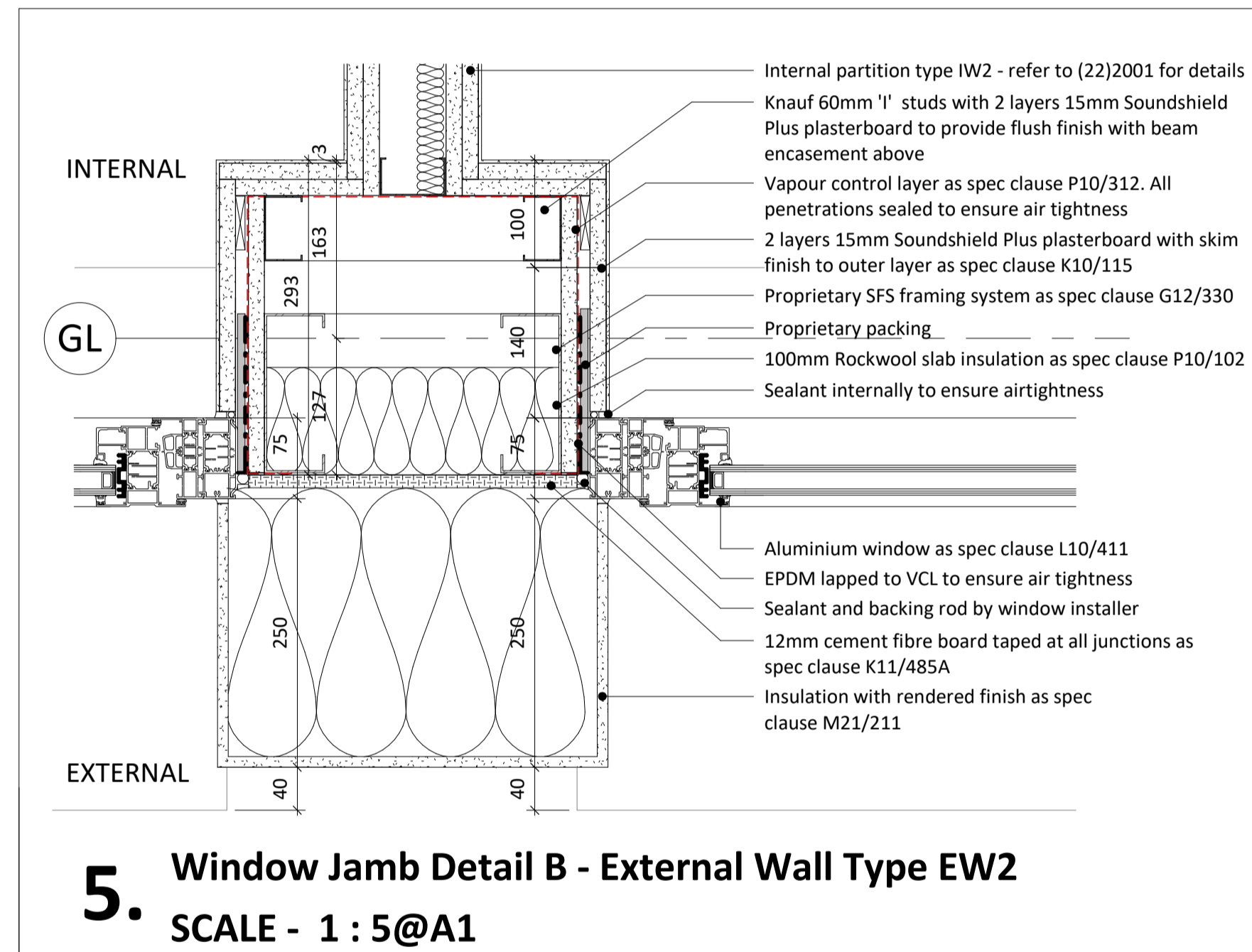
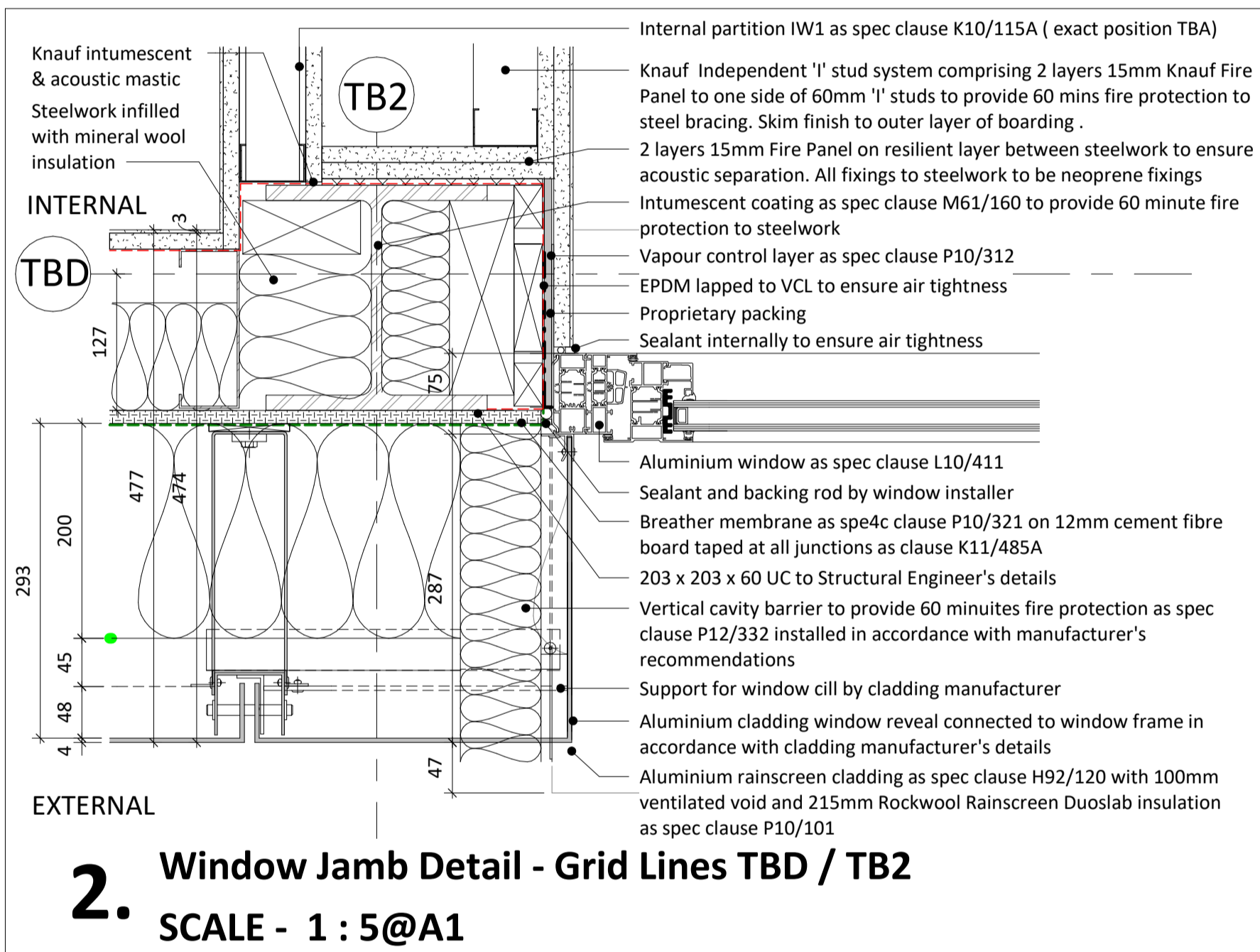


Do not scale from this drawing for construction or acquisition purposes. Responsibility is not accepted for errors made by others in scaling from this drawing. All construction information must be taken from figured dimensions only. All dimensions and levels must be checked on site and discrepancies between drawings and specification must be reported to GSSArchitecture.
© Copyright GSSArchitecture

Ordnance Survey © Crown Copyright 2017. All rights reserved. Licence number GSS 100017356.

Map Data Copyright 2017 Google.

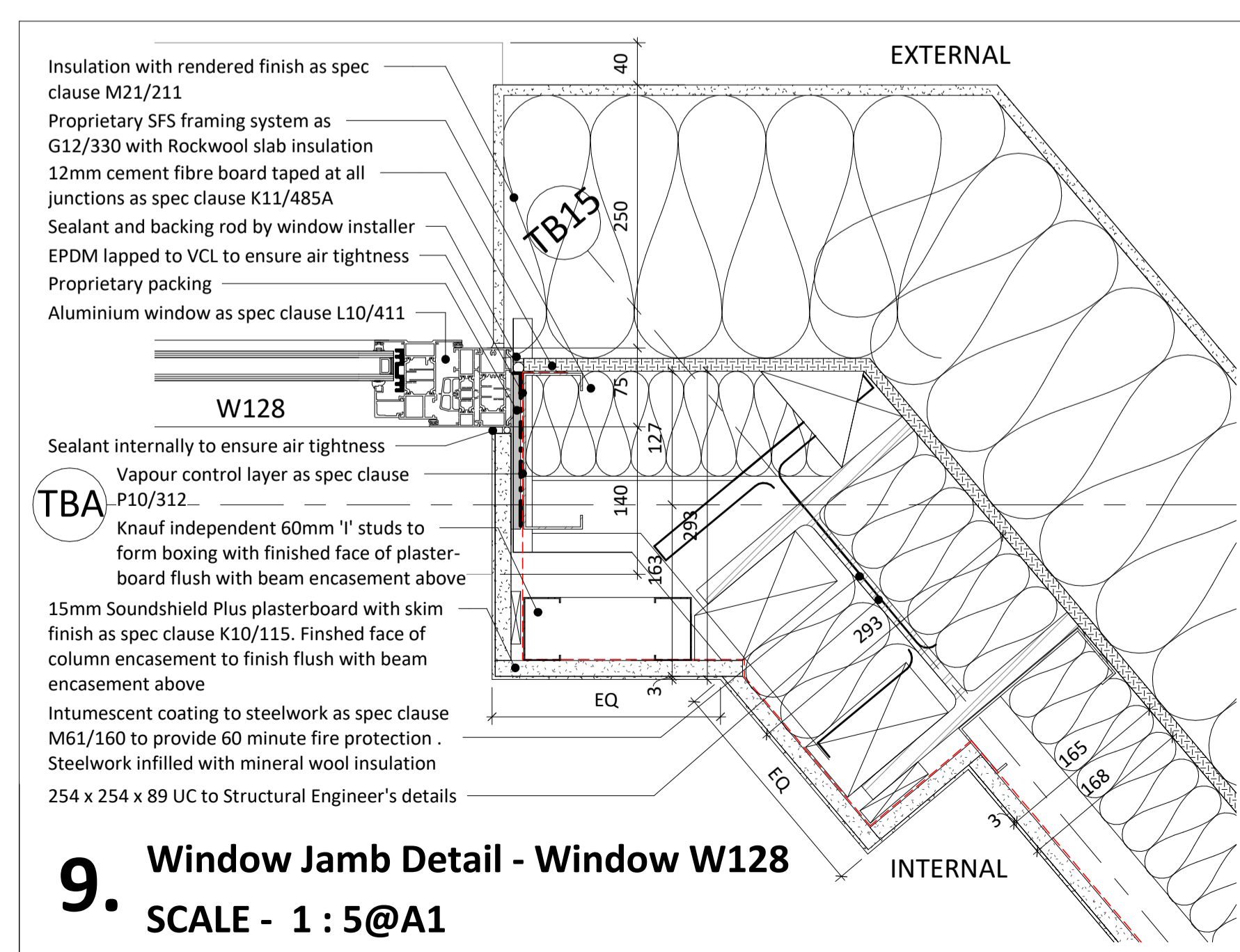
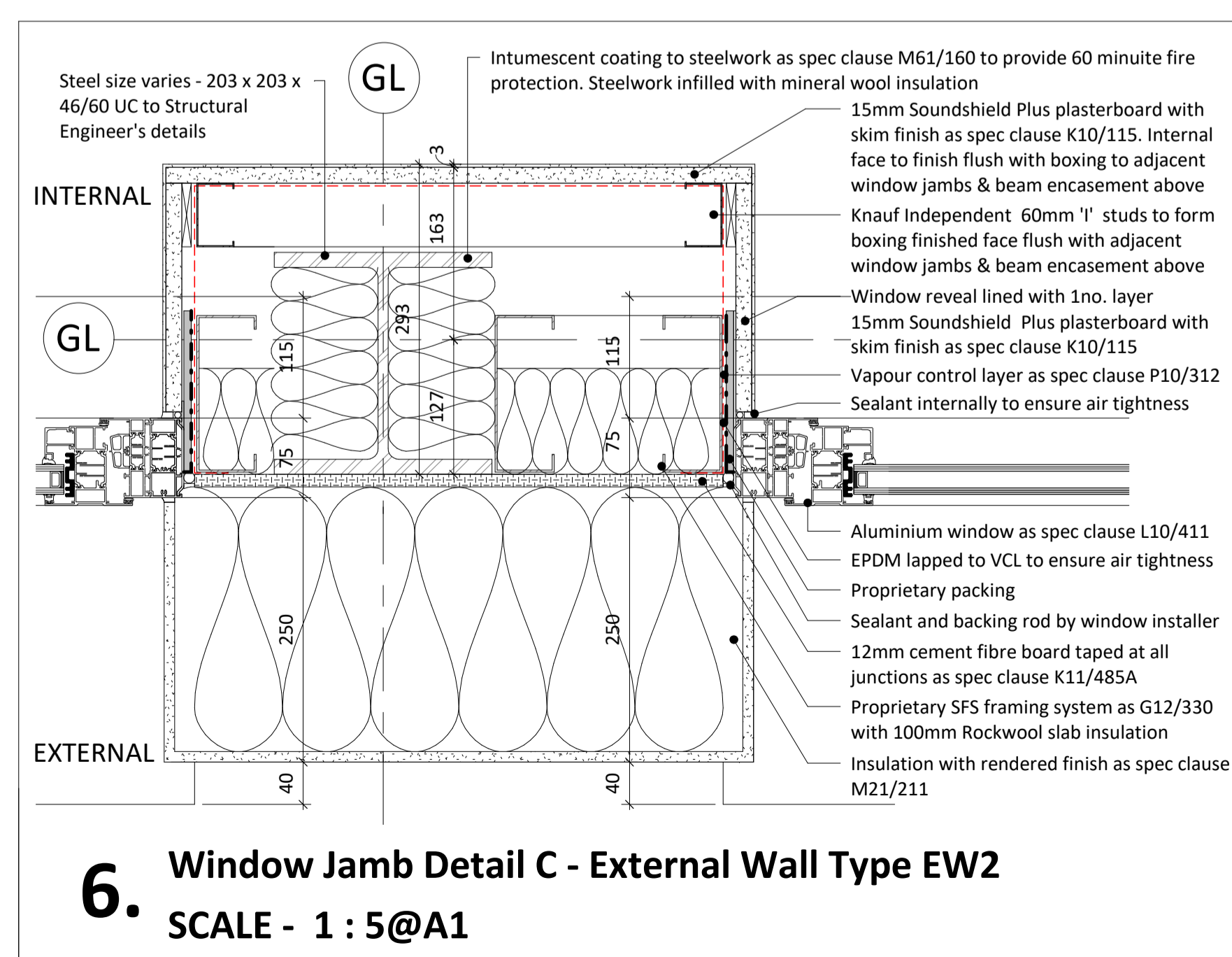
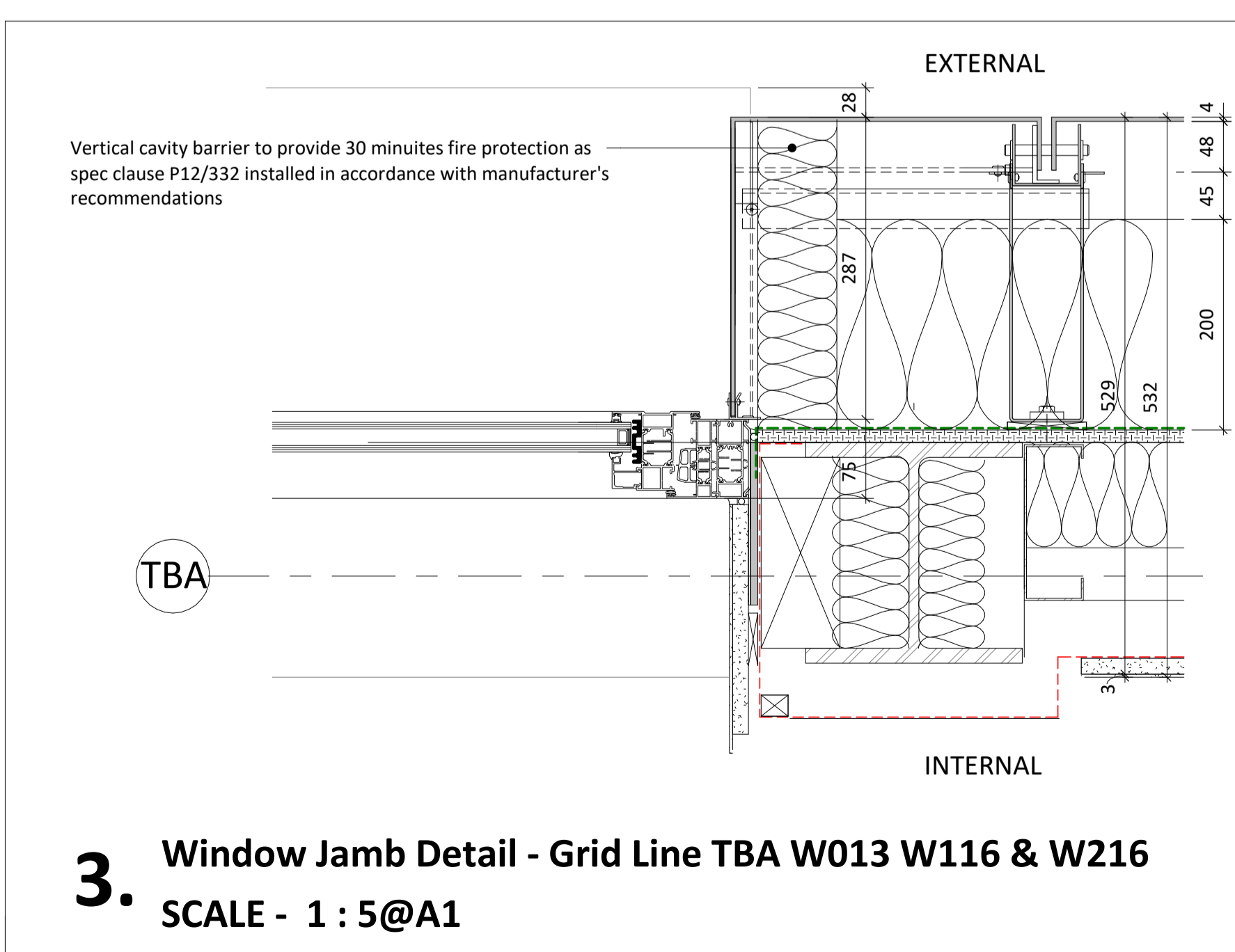
NOTE: Co-ordination of EPDM with VCL to ensure airtightness around window openings to be confirmed by window fabricator & indicated on window fabrication drawings. EPDM to be provided by window fabricator & bonded to window frame using adhesive & clamped using continuous flat plate bond to create watertight seal. All penetrations in EPDM to be fully sealed.



Rev.	Date	Drawn	Check	Description

gssarchitecture
35 HEADLANDS, KETTERING,
NORTHANTS, NN15 7ES
Telephone: 01536 513 165. Email: gss@gotch.co.uk,
Web: www.gssarchitecture.com

Gloucester: 01452 525 019, Harrogate: 01423 815 121,
Milton Keynes: 01908 255 620, Newcastle: 01913 898 917



This drawing is purely for discussion purposes only. It is not to be taken as a proposal for construction detailing, and instead it is primarily intended to convey the overall spatial layout of the building or parts of it. Please refer to the developed production information drawings for detail, construction and measurement purposes.

PRELIMINARY ISSUE

Project Title:
Parliament Hill School, William Ellis School and LaSWAP Sixth Form

Client:
Farrans Construction

Drawing Title:
Window Details - Sheet 2

File Number: SCH284
Drawn By: CMB
Checked By: BFLA
Scale@A1: 1 : 5 **Date:** 23/11/17
Dwg No: (31)2011 **Rev:**