



Entrance Hall - North elevation showing the main entrance door and surrounding framework.



Entrance Hall - showing the full height ceiling and cornice detailing.

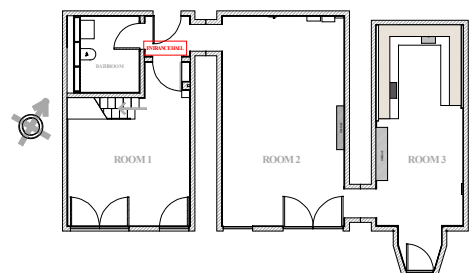


Entrance Hall - West elevation showing the existing bathroom door.



Entrance door - showing the door style of the existing original doors .

Apartment 2.02 St Pancras Chambers - Entrance Hall





Bathroom - West elevation showing the current layout of the existing fittings



Bathroom - Detail showing the access panel for the plumbing and electrical services.

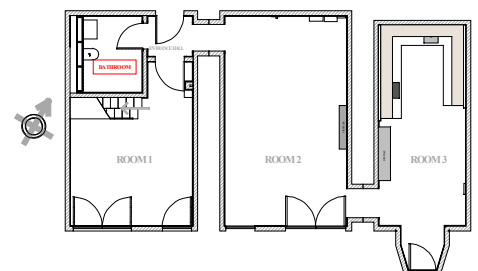


Bathroom - South elevation showing the bath /shower .



Bathroom - East elevation showing the door through to the entrance hall.

Apartment 2.02 St Pancras Chambers - Bathroom





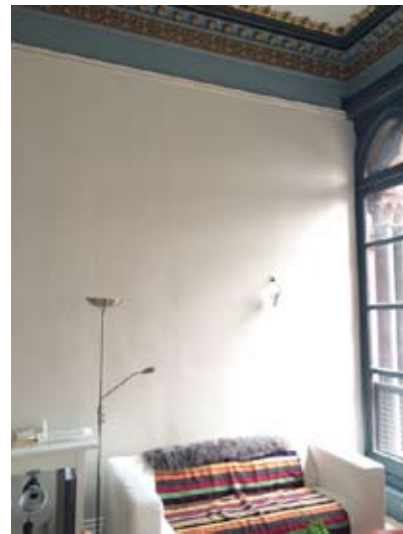
Room 1 - South elevation showing the original facade windows.



Room 1 - North elevation showing the mezzanine level and staircase.



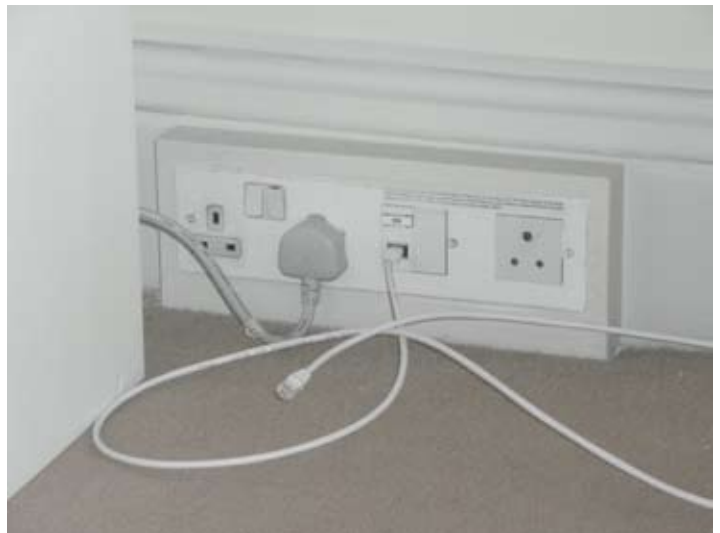
Room 1 - showing the west elevation.



Room 1 - showing the East elevation with the currently installed only fixed lighting provision in the room .

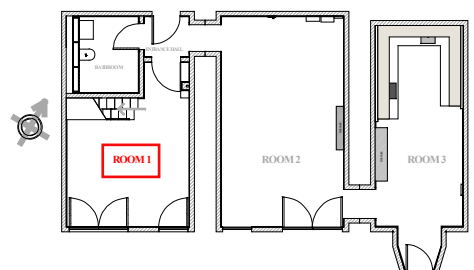


Room 1 - showing the doorway to the entrance hall with the threshold transition between the carpeted chipboard and the original softwood flooring.



Room 1 - showing one of the skirting mounted socket boxes and the skirting profile.

Apartment 2.02 St Pancras Chambers - Room 1





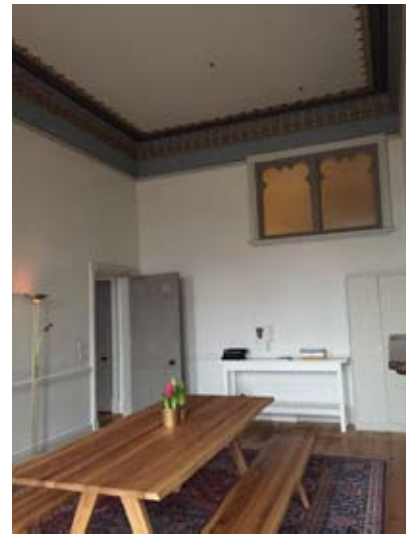
Room 2 - South elevation showing the original facade windows.



Room 2 - West elevation



Room 2 - North elevation showing the position of cupboard housing the electrics.



Room 2 - North elevation showing the door through to the entrance hall.

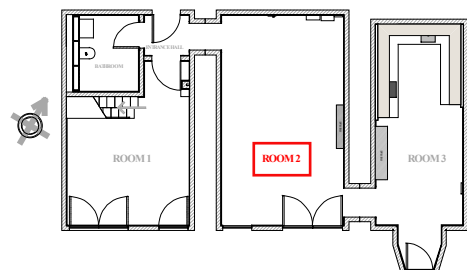


Room 2 - East elevation showing the original stone fire surround and passage to room 3.



Room 2 - MDF cupboard currently installed to house the electrical provision for the apartment.

Apartment 2.02 St Pancras Chambers - Room 2

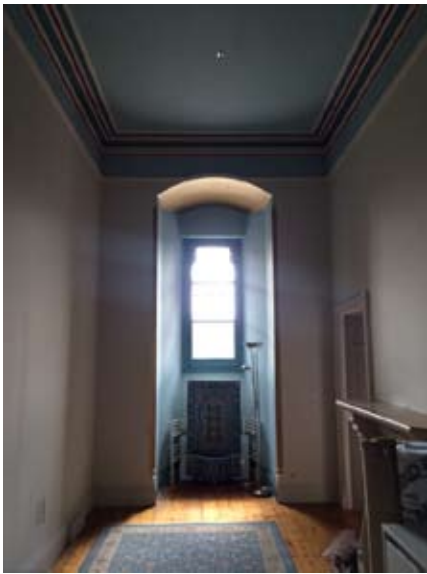




Room 3 - West elevation



Room 3 - North elevation showing the side sub-walls to house the kitchen services



Room 3 - South elevation



Room 3 - Kitchen detail showing the access port to the wall cavity housing building services.

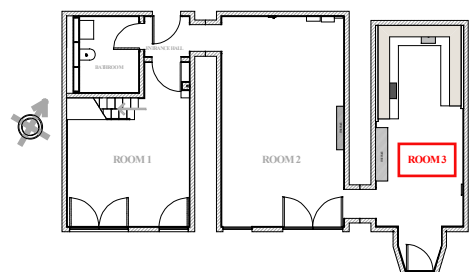


Room 3 - East elevation



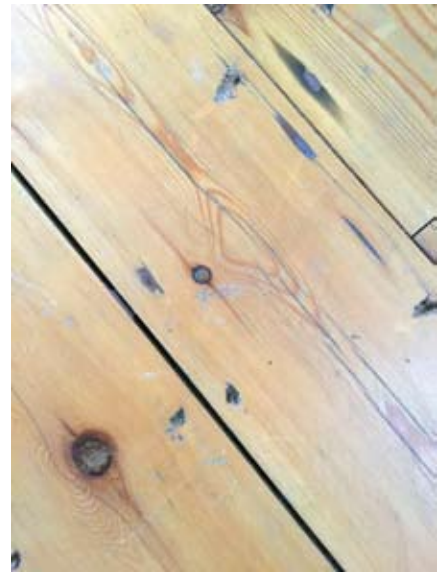
Room 3 - Plaster skirting detail .

Apartment 2.02 St Pancras Chambers - Room 3





Detail showing the bare floor finish exposed by the removal of a piece of new fitted furniture, contrasted with the adjacent polyurethane varnish finish.



Detail showing the gaps present



Detail showing the mastic used around the board covering the fireplace in Room 2



Detail showing the general marking and scuffing and nail holes



Detail showing the gaps and mastic between the floor and the skirting



Detail of the flooring around the fireplace

Apartment 2.02 St Pancras Chambers - Flooring details