

BUILDING DESIGN PARTNERSHIP LTD SHALL HAVE NO RESPONSIBILITY FOR ANY USE MADE OF THIS DOCUMENT OTHER THAN FOR THAT WHICH IT WAS PREPARED AND ISSUED.
 ALL DIMENSIONS SHOULD BE CHECKED ON SITE.
 DO NOT SCALE FROM THIS DRAWING.
 ANY DRAWING ERRORS OR DIVERGENCES SHOULD BE BROUGHT TO THE ATTENTION OF BUILDING DESIGN PARTNERSHIP LTD AT THE ADDRESS SHOWN BELOW.

NOTES

REVISION	DESCRIPTION	DRAWN	CHECKED	DATE

--	--	--	--	--

A - For Planning and Listed Building Consent Application LBE MB 01/06/17
 FIRST ISSUE LB MB 17/05/17

--	--	--	--	--



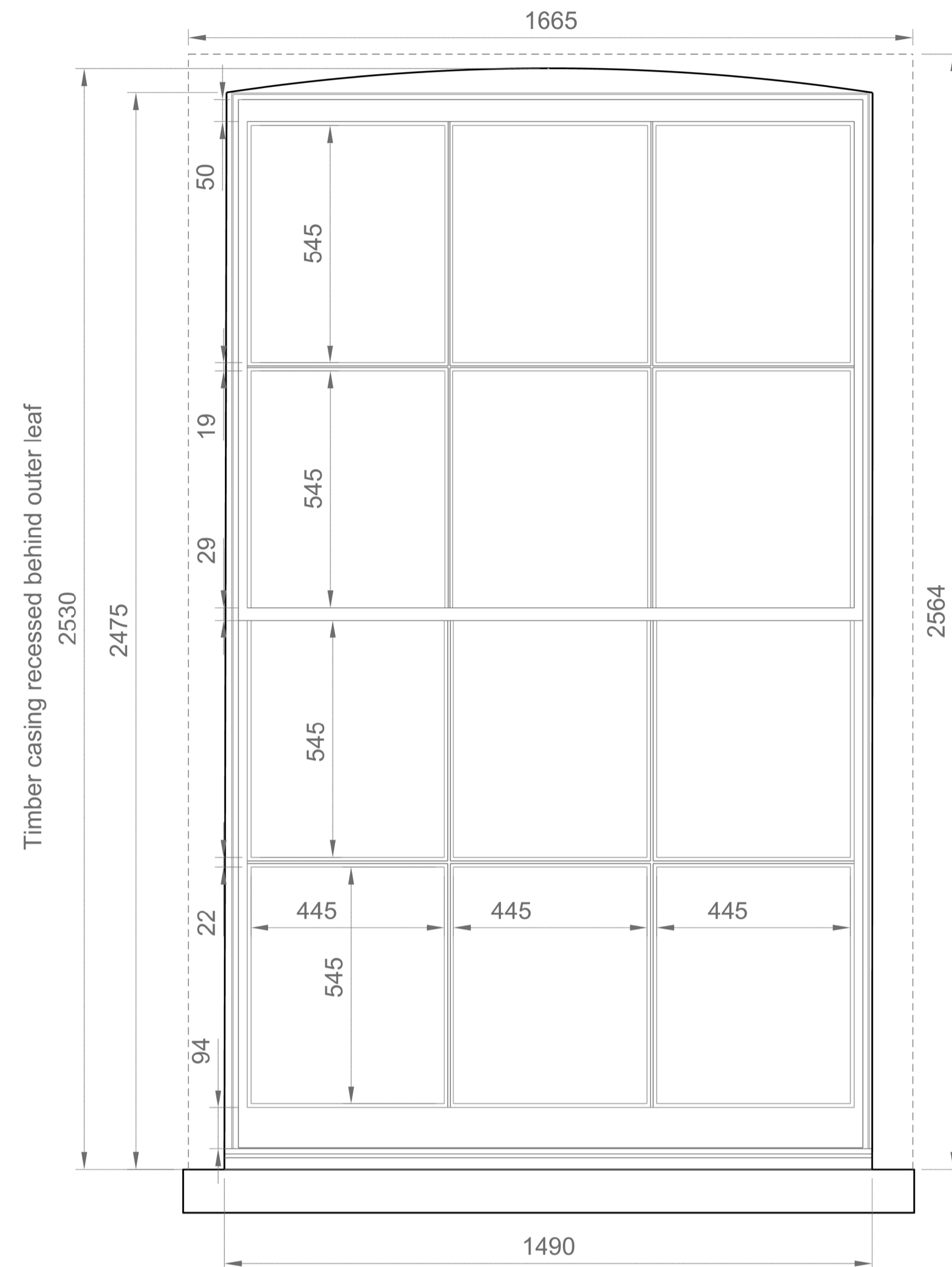
BDP.

16 Brewhouse Yard
 Clerkenwell
 London, EC1V 4LJ
 United Kingdom

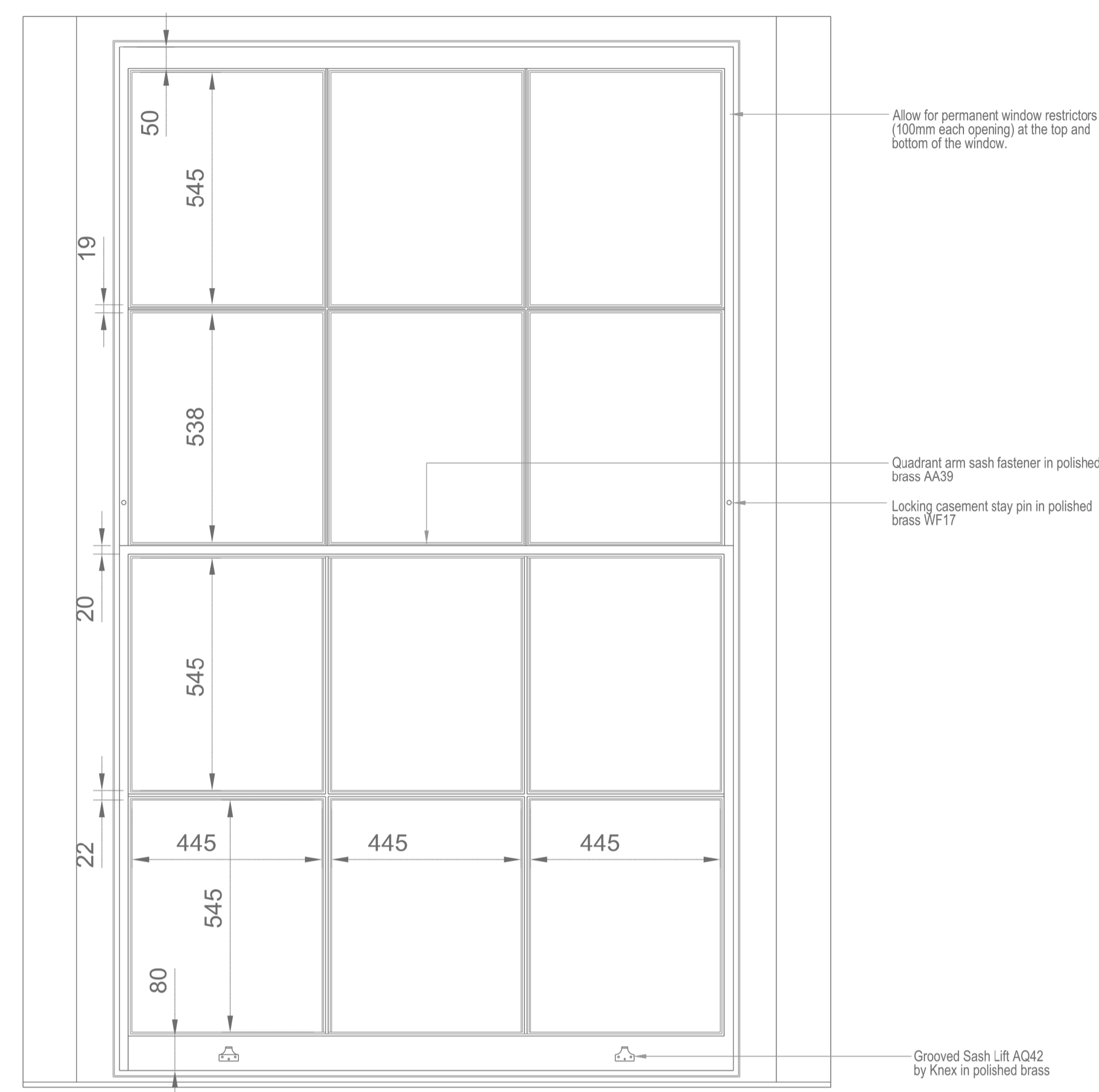
T +44 (0)20 7812 8000
 F +44 (0)20 7812 8399
 www.bdp.com

British Museum Perimeter Properties Refurbishment	
P2007246	
1A Montague Street New timber sash windows to replace existing metal windows 1A-G-W03 Planning and LBC Application	
(31)AD002	

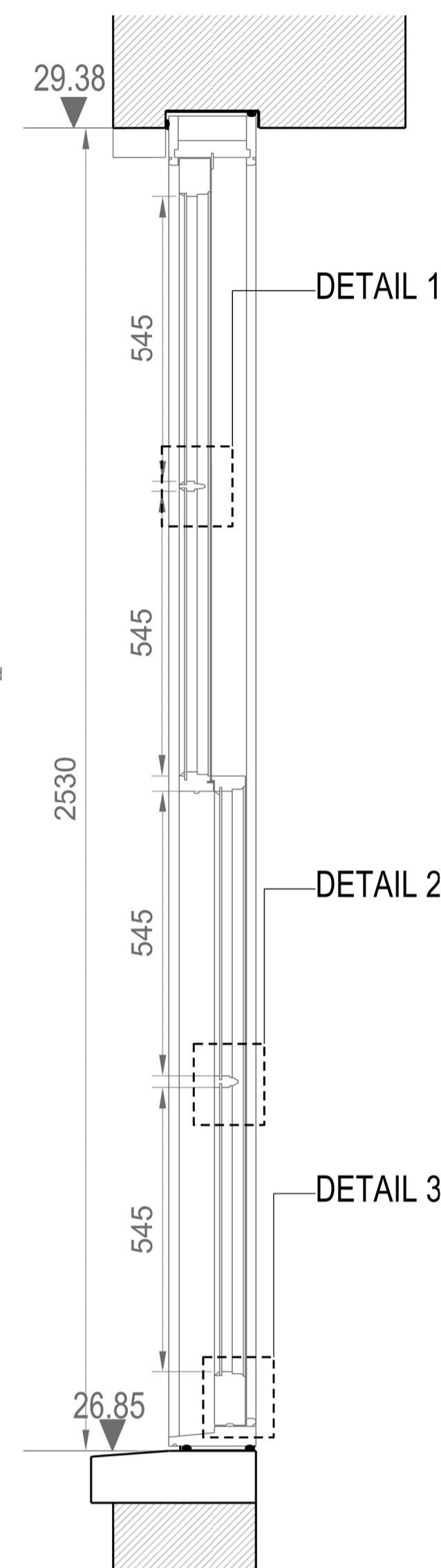
**NEW TIMBER FRAME SASH WINDOW 1A-G-W03
EXTERNAL FACE**



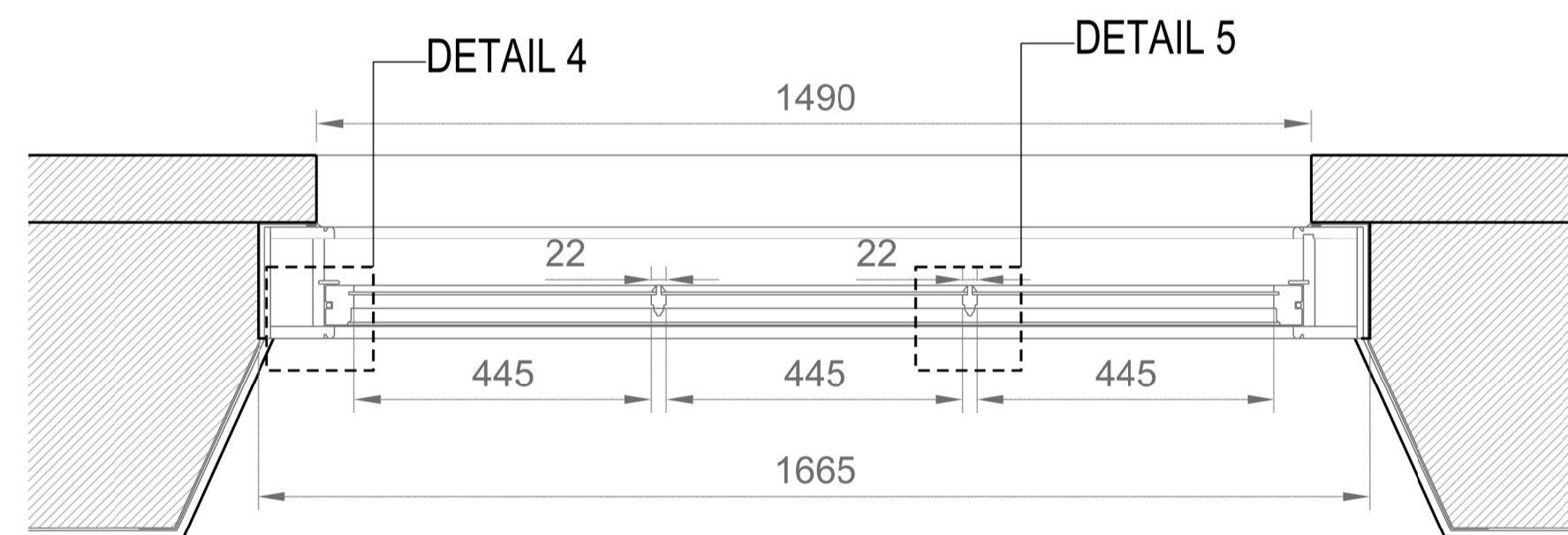
**NEW TIMBER FRAME SASH WINDOW 1A-G-W03
INTERNAL FACE**



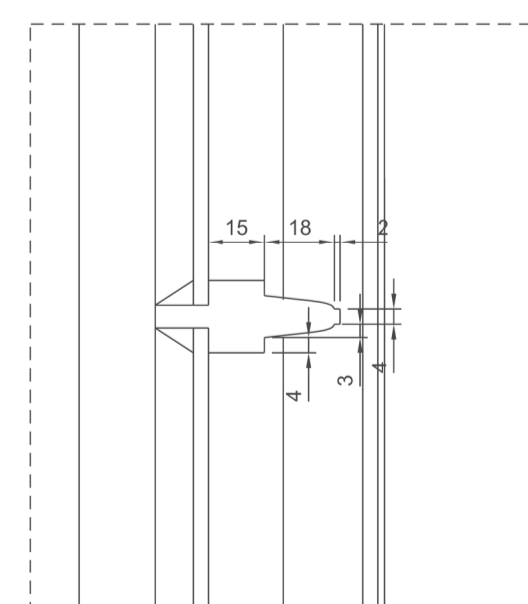
SECTION 1A-G-W03



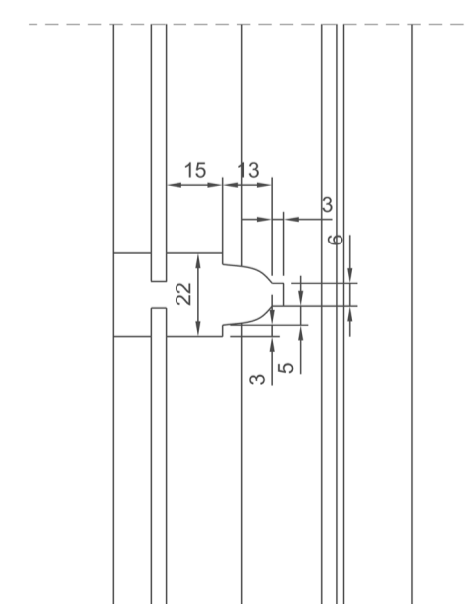
New timber frame sash window and architrave to match detail and profile of existing window 1A-G-W02. Overall width and height of existing opening has been taken from CAD Survey and should be checked on site by window's specialist.



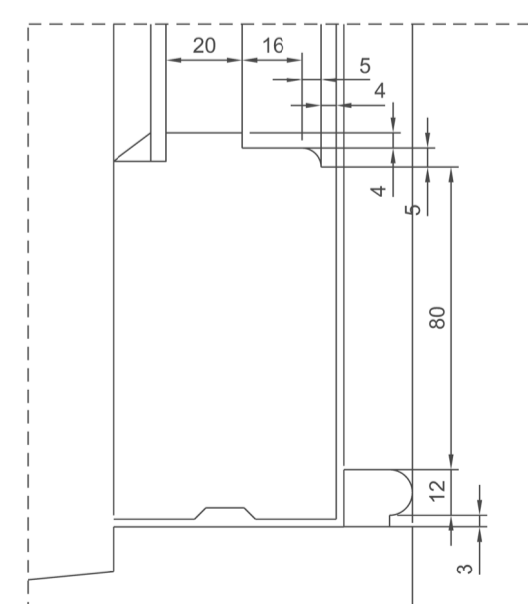
SECTION - PLAN 1A-G-W03



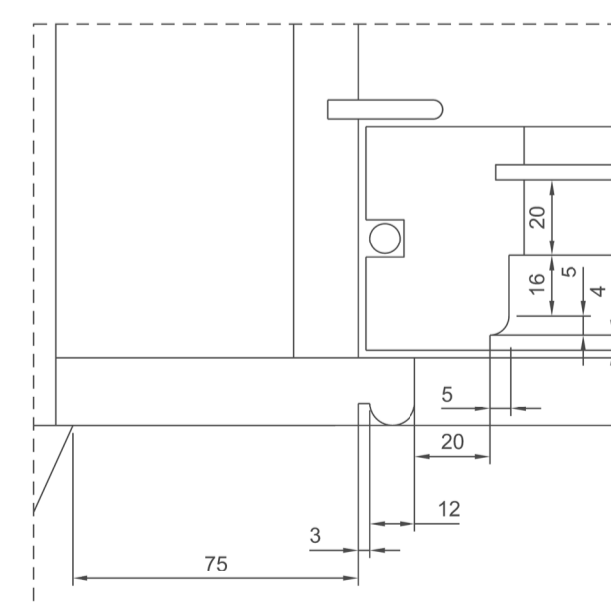
DETAIL 1
1:2



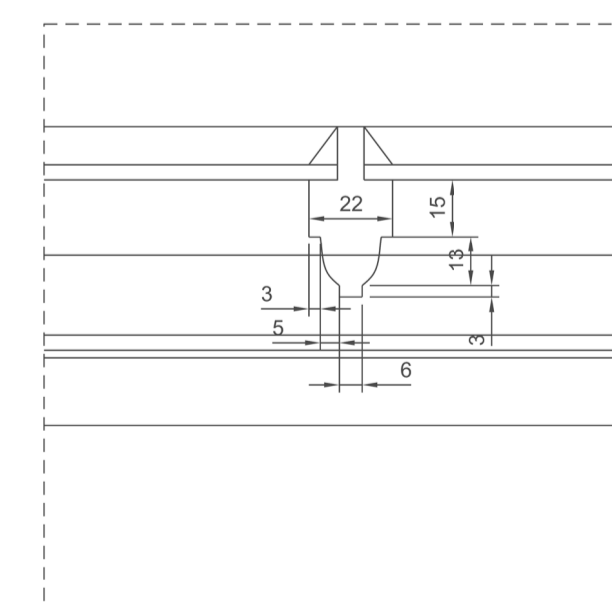
DETAIL 2
1:2



DETAIL 3
1:2



DETAIL 4
1:2



DETAIL 5
1:2

SCALE 1:10

